



# **Sydney Metro WSA - SSTOM - STM - E57 St Marys Station Consultation Report**

SMWSASSM-PLD-STM-SN100-CG-RPT-000001 (Rev 01)

Parklife Metro D&C

## Version Control

Revision	Author	Date	Comments	Approved by
A	J.Spence	04/10/2023	Initial draft	R.Noakes
B	J.Spence	13/10/2023	Revised in response to Sydney Metro comments	R.Noakes
00	J.Spence	29/11/2023	Updated document	R.Noakes
01	J.Spence	14/12/2023	Revised in response to Sydney Metro comments	R.Noakes

Signature	14/12/2023	<i>R.Noakes</i>
-----------	------------	-----------------

### Details of Revision Amendments Document Control

The Parklife Metro Environment Manager and the Parklife Metro Stakeholder & Community Engagement Director are responsible for ensuring this report is reviewed and approved and updated as required.

The Parklife Metro Community & Stakeholders Place Manager is responsible for the consultation and updating of this report, as required.

### Amendments

Any revisions or amendments must be approved by the Environment Manager and the Stakeholder & Community Engagement Director before being distributed and implemented.

# Contents

<b>Glossary</b> .....	<b>4</b>
<b>1 Overview</b> .....	<b>5</b>
1.1 Project background .....	5
1.2 SSTOM scope of works.....	5
1.2.1 St Marys Metro Station.....	8
1.3 Out-of-hours scope of works .....	8
1.3.1 Oversized plant and equipment deliveries.....	8
1.3.2 Extended work hours for concrete works .....	8
1.3.3 Utility investigations.....	9
1.3.4 Piling rig removal from station box .....	9
<b>2 Conditions of Approval requirements</b> .....	<b>10</b>
2.1 Out-of-hours Works – Community Consultation on Respite .....	10
2.2 Respite eligibility.....	10
2.3 Mitigation measures and planned respite .....	11
<b>3 Consultation tools and channels</b> .....	<b>12</b>
3.1 Communications tools .....	12
3.2 Communication activities timeline .....	13
3.3 Stakeholder list.....	14
3.4 Distribution maps.....	16
<b>4 Conclusion</b> .....	<b>18</b>
<b>Appendix A Impacted properties and consultation records – oversized plant and equipment deliveries</b> .....	<b>19</b>
<b>Appendix B Communication materials</b> .....	<b>46</b>
<b>Appendix C Conditions of Approval (SSI 10051)</b> .....	<b>52</b>
<b>Appendix D Distribution list 200m radius of site</b> .....	<b>53</b>

# Glossary

Standard terms and definitions.

TABLE 1. STANDARD TERMS

Term	Definition
Project	Sydney Metro – Western Sydney Airport
Parklife Metro	Consortium comprising entities of Plenary, Siemens Mobility, Siemens Financial Services, WeBuild and RATP Dev as successful contractors for the Sydney Metro Western Sydney Airport SSTOM Package.
Parklife Metro D&C	Parklife Metro Design and Construct. Consists of WeBuild S.P.A, Siemens Mobility Pty Ltd. Responsible for the construction of SSTOM Works

TABLE 2. ABBREVIATIONS

Term	Definition
CCMS	Construction Complaints Management System
CCS	Community Communications Strategy
CEMP	Construction Environmental Management Plan
CNVS	Sydney Metro Construction Noise and Vibration Standard
CNVIS	Construction Noise and Vibration Impact Statement
CNVMP	Construction Noise and Vibration Management Plan
CoA	Conditions of Approval
CSSI	Critical State Significant Infrastructure
DNVIS	Detailed Noise and Vibration Impact Statement
DPE	Department of Planning and Environment
EPA	NSW Environment Protection Authority
EPL	Environmental Protection Licence
OOH	Out-of-hours
OOHW	Out-of-hours work
OSOM	Over-size over-mass
SBT	Station boxes and tunnelling works
SCAW	Surface and civil alignment works
SM-WSA	Sydney Metro – Western Sydney Airport
SSTOM	Stations, Systems, Trains, Operations and Maintenance

# 1 Overview

This E57 Community Consultation Report provides a summary of consultation undertaken by Parklife Metro in accordance with Condition of Approval E57, with respect to out-of-hours work (OOHW), which includes deliveries of plant and equipment, extended work hours for concrete pours, concrete finishing works and piling works and utility investigations proposed at St Marys Metro Station.

## 1.1 Project background

The Sydney Metro – Western Sydney Airport (SM-WSA) will become the transport spine for Greater Western Sydney, connecting communities and travellers with the new Western Sydney International (Nancy-Bird Walton) Airport and the growing region.

The city-shaping project, from St Marys through to the new airport and the Western Sydney Aerotropolis (the new suburb of Bradfield), will provide a major economic stimulus for western Sydney, supporting more than 14,000 jobs during construction for the NSW and national economies.

Jointly funded by the Australian and NSW Governments, the 23-kilometre new railway will link residential areas with job hubs including the new Aerotropolis and connect travellers from the new airport to the rest of Sydney's public transport system.

The Australian and NSW governments have awarded all three major contracts for the Sydney Metro – Western Sydney Airport project:

- Station boxes and tunnelling (SBT) – currently in delivery
- Surface and civil alignment works (SCAW) – currently in delivery
- Stations, Systems, Trains, Operations and Maintenance (SSTOM) – currently in delivery

## 1.2 SSTOM scope of works

In December 2022, the largest ever Public Private Partnership (PPP) contract in New South Wales, was awarded to Parklife Metro for the Stations, Systems, Trains, Operations and Maintenance (SSTOM) works for the Sydney Metro - Western Sydney Airport Project.

Parklife Metro will deliver:

- Around 4.3km of twin rail tunnels (generally located side by side) between St Marys (the Northern extent of the project) and Orchard Hills
- A cut-and-cover tunnel around 350 metres long (including tunnel portal), transitioning to an in-cutting rail alignment south of the M4 Western Motorway at Orchard Hills
- Around 10km of rail alignment between Orchard Hills and Western Sydney International, consisting of a combination of viaduct and surface rail alignment
- Around two kilometres of surface rail alignment within Western Sydney International Airport
- Around 3.3km of twin rail tunnels (including tunnel portal) within Western Sydney International Airport
- Around 3km of twin rail tunnels between Western Sydney International Airport and the Aerotropolis Core
- Six new Metro Stations:
  - St Marys (providing an interchange with the existing Sydney Trains suburban rail network)
  - Orchard Hills
  - Luddenham
  - Airport Business Park
  - Airport Terminal

- Aerotropolis (the new Western Parkland City)
- Grade separation of the track alignment at key locations including:
  - Where the alignment interfaces with existing infrastructure such as the Great Western Highway, M4 Western Motorway, Lansdowne Road, Patons Lane, the Warragamba to Prospect Water Supply Pipelines, Luddenham Road, the future M12 Motorway, Elizabeth Drive, Derwent Road and Badgerys Creek Road
  - Crossings of Blaxland Creek, Cosgroves Creek, Badgerys Creek and other small waterways to provide flood immunity for the Project
- Modifications to the existing Sydney Trains station and rail infrastructure at St Marys (where required) to support interchange and customer transfer between the new metro station and the existing Sydney Trains suburban rail network
- A stabling and maintenance facility and operational control centre located to the south of Blaxland Creek and east of the proposed metro track
- New pedestrian, cycle, park-and-ride and kiss-and-ride facilities, public transport interchange infrastructure, road infrastructure and landscaping as part of the station precincts.

Parklife Metro will also operate and maintain the Sydney Metro – Western Sydney Airport (SM-WSA) line, and its assets for 15 years after it becomes operational in 2026.

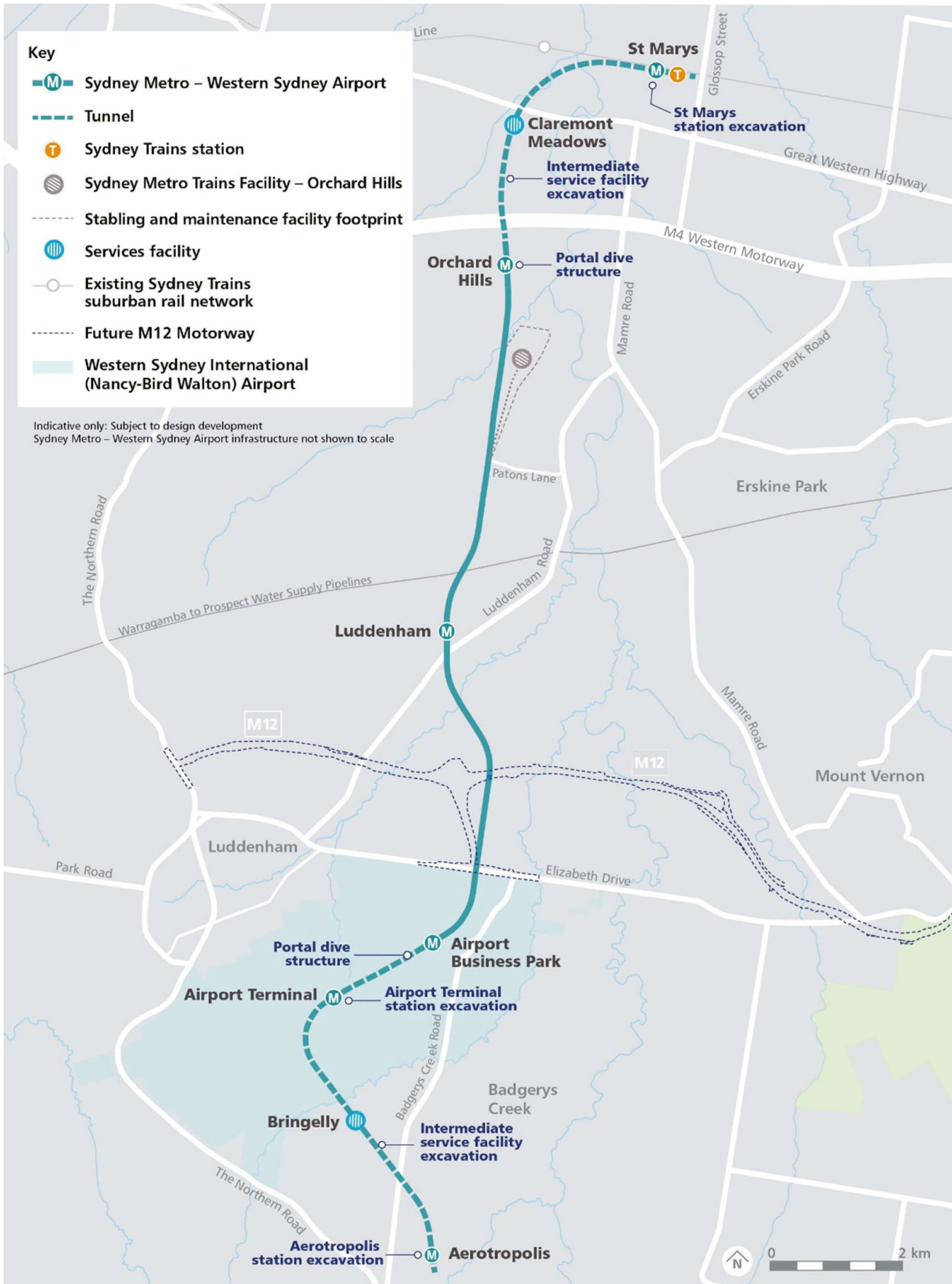


FIGURE 1. MAP OF THE SM-WSA PROJECT ALIGNMENT, AND STATION LOCATIONS

## 1.2.1 St Marys Metro Station

St Marys Metro Station is a cut-and-cover underground station, which will be constructed into a station box, with platforms located below the existing surface level. Construction of the station will move progressively up, from the bottom of the excavation creating a "wall-floor-wall-floor" sequence, erected progressively from the foundation to the ground level and, where envisaged, above ground with the elevated buildings.

**Key features and benefits of St Marys Metro Station will include:**

- new secure bicycle parking
- reconfigured bus interchange and shelters located on both sides of Station Street and a bus layover area located to the east of St Marys Metro Station
- kiss-and-ride and point-to-point vehicle facilities on both the northern and southern sides of the T1 Western Line
- above-ground pedestrian connection to the existing St Marys Station
- existing pedestrian overpass at St Marys Station retained
- upgrades to the existing road reserves
- new pedestrian crossings
- new public plazas adjacent to the proposed station entrances
- space for potential future station retail for an integrated station and precinct development (subject to separate approval).

## 1.3 Out-of-hours scope of works

### 1.3.1 Oversized plant and equipment deliveries

Some activities, such as over-size over-mass equipment deliveries must be carried out at night when there is approval to occupy the roadway, to minimise traffic disruption and reduce safety risks to workers and road users.

Deliveries requiring out-of-hours work (OOHW) will include:

- Mobile cranes
- Piling rigs
- Excavators
- Tower crane components.

### 1.3.2 Extended work hours for concrete works

Due to the size of the concrete pours during piling works and for the station box base slabs and walls, we will require to work extended construction hours to complete the pours and finishing works to mitigate any safety and quality risks.

Concrete pours extended hours are:

- Concrete pours will continue from 6pm to 8pm, Monday to Friday; and 1pm to 4pm Saturdays
- Concrete pours are permitted up to 9pm, Monday to Friday for the station box base slabs, up to 12 times only
- Concrete finishing works inside the station box will continue from 6pm to 10pm Monday to Friday; and 1pm to 4pm Saturdays.



### **1.3.3 Utility investigations**

The existing sewer maintenance shafts are located within the road corridor and can only be carried out at night when there is approval to occupy the roadway, to minimise traffic disruption and reduce safety risks to workers and road users. Flows within the pipeline will be much less later at night enabling the camera to inspect without being flooded/washed away.

The work involves opening up manholes on the local streets and using a camera to capture data of the inside of the existing sewer line. Access will be maintained to properties; however this work will involve stop-slow traffic control.

Works are assessed to be NML compliant, and no noise impacts are expected.

### **1.3.4 Piling rig removal from station box**

Due to space restrictions on site, we will require to remove a piling rig from inside the station box, via a 750-tonne crane which will be set up on Station Street, outside the St Marys Metro Station site.

There will be a road closure of Station Street, however access will be maintained for residents' driveways and pedestrians.

Proposed work hours are between 5:30am and 10pm. Respite for these works will be in accordance with this report. Noise assessment has not yet been prepared and E57 report will be updated once noise assessment has been received.

## 2 Conditions of Approval requirements

This E57 Community Consultation Report provides a summary of consultation undertaken in accordance with Condition of Approval E57 with respect to out of hours works activities proposed at the St Marys Metro Station site.

### 2.1 Out-of-hours Works – Community Consultation on Respite

#### E57 states:

In order to undertake out-of-hours work outside the work hours specified under Condition E38, appropriate respite periods for the out-of-hours work must be identified in consultation with the community at each affected location on a regular basis. This consultation must include (but not be limited to) providing the community with:

- (a) a progressive schedule for periods no less than three (3) months, of likely out-of-hours work;
- (b) a description of the potential work, location and duration of the out-of-hours work;
- (c) the noise characteristics and likely noise levels of the work; and
- (d) likely mitigation and management measures which aim to achieve the relevant NMLs under

Condition E43 (including the circumstances of when respite or relocation offers will be available and details about how the affected community can access these offers).

The outcomes of the community consultation, the identified respite periods and the scheduling of the likely out-of-hour work must be provided to the ER, EPA and the Planning Secretary prior to the out-of-hours work commencing.

Note: Respite periods can be any combination of days or hours where out-of-hours work would not be more than 5 dB(A) above the RBL at any residence.

### 2.2 Respite eligibility

In accordance with the Sydney Metro Construction Noise and Vibration Standard (CNVS), the Construction Noise and Vibration Management Plan (CNVMP), and the Detailed Noise and Vibration Impact Statements (DNVIS); receivers are eligible for respite during out-of-hours activities when works are predicted to:

- Exceed 20-30dB LAeq above the noise management levels during the Evening period (6pm to 10pm)
- Exceed 10-20dB LAeq above the noise management levels during the night time period (10pm to 7am)
- Receivers are identified as highly noise impacted (>75dB)

Additional mitigation measures as per the CNVS, CNVMP and DNVIS are included in Table 1 below.

TABLE 1. OUT-OF-HOURS MITIGATION MEASURES AS PER THE PROJECTS ENVIRONMENTAL PLANNING DOCUMENTS

Time period		Mitigation measures for predicted LAeq (15 minute) airborne noise level above NML			
		0-10dB	10-20dB	20-30dB	>30dB
Approved construction hours	Mon-Fri (7:00am - 6:00pm)	-	LB	LB, M, SN	LB, M, SN
	Sat (8:00am – 1:00pm)				
	Sun/Pub Hol (Nil)				
OOHW (Evening)	Mon-Fri (6:00pm – 10:00pm)	LB	LB, M	LB, M, SN, RO	LB, M, SN, IB, PC, RO
	Sat (1:00pm – 10:00pm)				
	Sun/Pub Hol (8:00am – 6:00pm)				
OOHW (Night)	Mon-Fri (10:00pm – 7:00am)	LB	LB, M, SN, RO	LB, M, SN, IB, PC, RO, AA	LB, M, SN, IB, PC, RO, AA
	Sat (10:00pm – 8:00am)				
	Sun/Pub Hol (6:00pm – 7:00am)				

NOTE: Phone calls (PC), Monitoring (M), Individual briefings (IB), Alternative Accommodation (AA), Specific Notification (SN), letterbox drop (LB), Duration Reduction (DR), Project Specific Respite Offer (RO).

## 2.3 Mitigation measures and planned respite

This work is expected to generate intermittent periods of noise, when the delivery trucks have reached site, and unloading the equipment. For the proposed out-of-hours work, the following mitigation measures and respite will be implemented:

- Works will be undertaken no more than three nights in a week, no more than two consecutive nights, and no more than 10 nights in a month
- Noise monitoring will be undertaken to confirm our noise modelling, and inform additional mitigation measures, as required
- All vehicles will be turned off when not in use, non-tonal reversing alarms will be fitted to plant and machinery, and trucks will avoid reversing, where feasible
- Temporary lighting will be directed away from properties, to avoid light spill
- Communication will be limited to radios only when moving and unloading equipment, with no use of horns or loud radios
- Alternate use of chains such as harness to minimise metal to metal contact
- Use of rubber faced mullets instead of hammers to reduce metal to metal contact
- Ongoing doorknocks and consultation, to seek further feedback, and to be able to address any reasonable concerns
- Co-ordination of out-of-hours works with the station boxes and tunnelling contractor to ensure respite conditions are met.

# 3 Consultation tools and channels

Community consultation has been undertaken prior to commencement of the out-of-hours work in accordance with the PLM Community Communications Strategy (CCS) and the Project's Environmental Protection Licence (EPL) 21807.

## 3.1 Communications tools

Consultation includes a range of tools including:

Type	Purpose and use
<b>Monthly construction updates</b>	<p>A monthly construction update distributed at the start of each month, providing details on:</p> <ul style="list-style-type: none"><li>• Upcoming construction activities for the month, including any OOHW</li><li>• Hours of work, and durations</li><li>• Equipment used on site</li><li>• Traffic, pedestrian and cyclist routes on any changes, closures, and/detours</li><li>• Likely impacts of construction activities, including noise, vibration, traffic, access, and dust</li><li>• Mitigation measures to reduce the impacts of activities</li><li>• Work location maps</li><li>• Contact details, including how feedback can be provided</li></ul>
<b>Out-of-hours notifications</b>	<p>An out-of-hours notification distributed no less than seven calendar days and no more than 14 calendar days, prior to OOHW commencing, providing details on:</p> <ul style="list-style-type: none"><li>• Upcoming OOH construction activities, including hours of work and durations</li><li>• Equipment used on site</li><li>• Traffic, pedestrian and cyclist routes on any changes, closures, and/detours</li><li>• Likely impacts of construction activities, including noise, vibration, traffic, access, and dust during the OOHW</li><li>• Mitigation measures to reduce the impacts of activities during the OOHW</li><li>• OOHW location maps</li><li>• Contact details, including how feedback can be provided</li></ul>
<b>Specific notifications</b>	<p>Specific notification distributed to those identified as impacted receivers during the OOHW.</p> <p>Specific notification is used to support the monthly construction updates and OOHW notifications, to provide additional details on the impacts, and any changes that may occur.</p>

<b>Email campaigns</b>	Email updates sent to registered stakeholders to describe the OOHW activities including a link to the full notification listed on the Sydney Metro website.  Email updates also include contact details, including how feedback can be provided.
<b>Doorknocks</b>	Doorknocks to impacted properties to consult on the proposed OOHW, and any feedback.
<b>Phone calls</b>	Phone calls to impacted properties (where contact details are on record) to consult on the proposed OOHW, and any feedback.
<b>Targeted emails</b>	Targeted emails to impacted properties (where contact details are on record) to consult on the proposed OOHW, and any feedback.
<b>Community Information Line: 1800 717 703</b>	Provides community access to the project communications team during construction hours. OOH complaints will be referred to the on-call Place Manager.
<b>Sydney Metro email: sydneymetroswa@transport.nsw.gov.au</b>	Provides access during business hours to the Sydney Metro project communications team. Website enquiries are directed through this email address.
<b>Postal address for written feedback: Sydney Metro, PO BOX K659 Haymarket, NSW 1240</b>	Provides access to the broader Sydney Metro project. Address is included in all notifications and newsletters.
<b>Consultation Manager</b>	All interactions with stakeholders will be recorded in this database which is established by Sydney Metro.

## 3.2 Communication activities timeline

TABLE 3. COMMUNICATION ACTIVITIES TIMELINE

Date	Activity	
<b>4 October 2023</b>	Out-of-hours notification distributed to 200m radius of site, 7 calendar days prior to OOHW commencing	Also includes: Campaign Email to 1682 stakeholders Notification uploaded to SM website Upcoming works listed on SM Connect App.
<b>4 October 2023</b>	Door knock properties listed in Appendix A with specific notification	SWMY slips left if no contact was made.
<b>6 October 2023</b>	Second attempt of doorknock properties	Follow up with impacted properties we have been unable to reach via doorknocking and SWMY slips left if no contact was made.

<b>6 October 2023</b>	Specific notification was updated to reflect new dates and distributed to those listed as noise sensitive for these works.	Distribution to properties listed in Appendix A. Upcoming works listed on SM Connect App.
<b>17 October 2023</b>	Out-of-hours notification distributed to 200m radius of site, 7 calendar days prior to OOHW commencing	Also includes: Campaign Email to 1682 stakeholders Notification uploaded to SM website Upcoming works listed on SM Connect App.
<b>1 November 2023</b>	Specific notification distributed for urgent extended work hours for a concrete pour during piling works	Also includes: Campaign Email to 1682 stakeholders Upcoming works listed on SM Connect App
<b>28 November 2023</b>	Monthly construction update to 200m radius of site, which included proposed out-of-hours activities and a three month lookahead of OOHW.	Also includes: Campaign Email to 1682 stakeholders Notification uploaded to SM website
<b>Ongoing</b>	Re-engagement with the community on any proposed OOHW. All feedback received will be considered and implemented, where feasible.	

### 3.3 Stakeholder list

TABLE 4. STAKEHOLDER LIST FOR DISTRIBUTION AREAS

Stakeholder	Location	Communication activities
<b>Broader distribution area (Properties listed in Appendix D)</b>	200m of site - St Marys	Monthly notifications OOHW notifications Campaign emails
<b>Oversized deliveries - impacted properties and nearby residents</b>	34-36 Phillip Street (18 units)	Monthly notifications
	31 Phillip Street (6 units)	OOHW notifications
	1 Station Street (7 units)	Specific notifications
	2 Station Street (8 units)	Campaign emails
	3 Station Street (19 units)	Doorknocks
	3 Chesham Street	Targeted emails
	3A Chesham Street	Phone calls

2 Chesham Street  
2A Chesham Street

---

<b>Extended hours – concrete pours</b>	34-36 Phillip Street (18 units)	Monthly notifications
	31 Phillip Street (6 units)	OOHW notifications
	11 Phillip Street (24 units)	Campaign emails
	1 Station Street (7 units)	
	2 Station Street (8 units)	
	3 Station Street (19 units)	
	6 Chesham Street	
	5 Chesham Street	
	4 Chesham Street	
	3 Chesham Street	
	3A Chesham Street	
	2 Chesham Street	
	2A Chesham Street	

---

<b>Extended hours – concrete finishing works (inside station box)</b>	2 Station Street (8 units)	Monthly notifications
	3 Station Street (19 units)	OOHW notifications
		Campaign emails

---

<b>Utility investigations – CCTV of sewer line</b>	1 Station Street (7 units)	Monthly notifications
	2 Station Street (8 units)	OOHW notifications
	3 Station Street (19 units)	Campaign emails
	3 Chesham Street	
	3A Chesham Street	
	2 Chesham Street	
	2A Chesham Street	
	1 Chesham Street	
	1A Chesham Street	
Local businesses and retailers along Queen Street and Station Street		

---

<b>Businesses</b>	Local businesses and retailers along Queen Street and Phillip Street	Monthly notifications
		OOHW notifications
	Commercial and industrial receivers along Glossop Street and Kurrajong Road, and the industrial area located to the north of the existing St Marys Station and the Project.	Campaign emails

### 3.4 Distribution maps

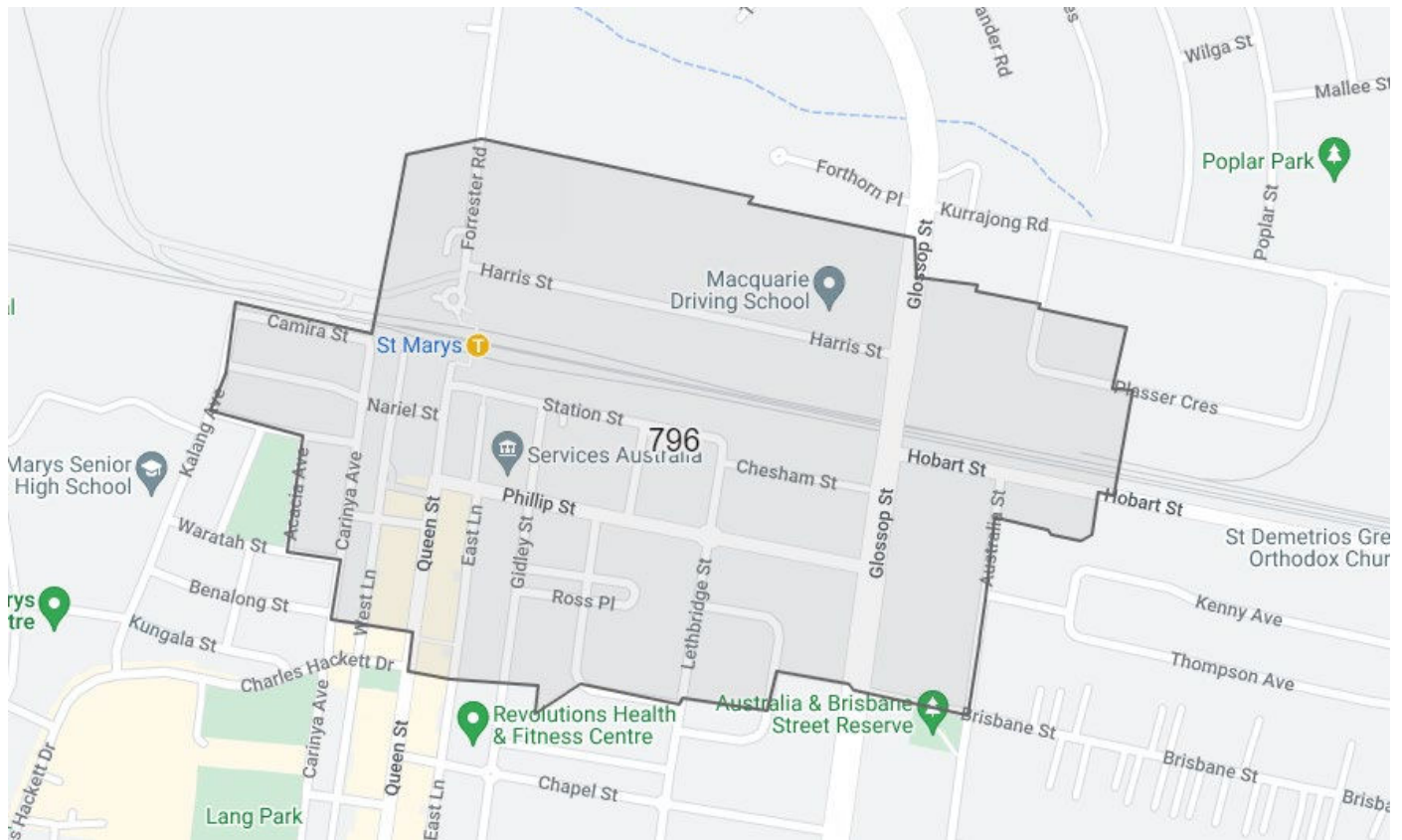


FIGURE 2. DISTRIBUTION MAP - 200M RADIUS OF SITE

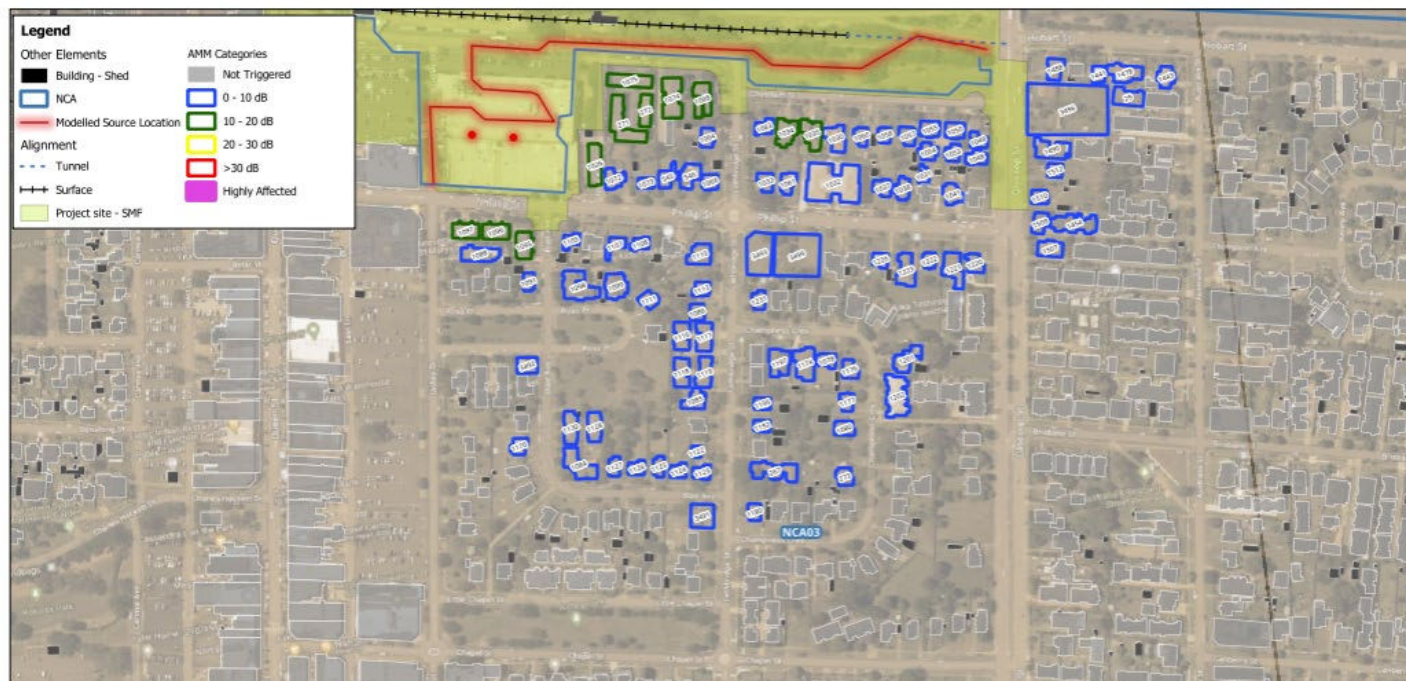


FIGURE 3. OVERSIZED PLANT AND EQUIPMENT DELIVERIES NOISE MODELLING MAP SHOWING PROPERTIES CONSULTED WITH IN THE 10 – 20 DB AMM CATEGORY



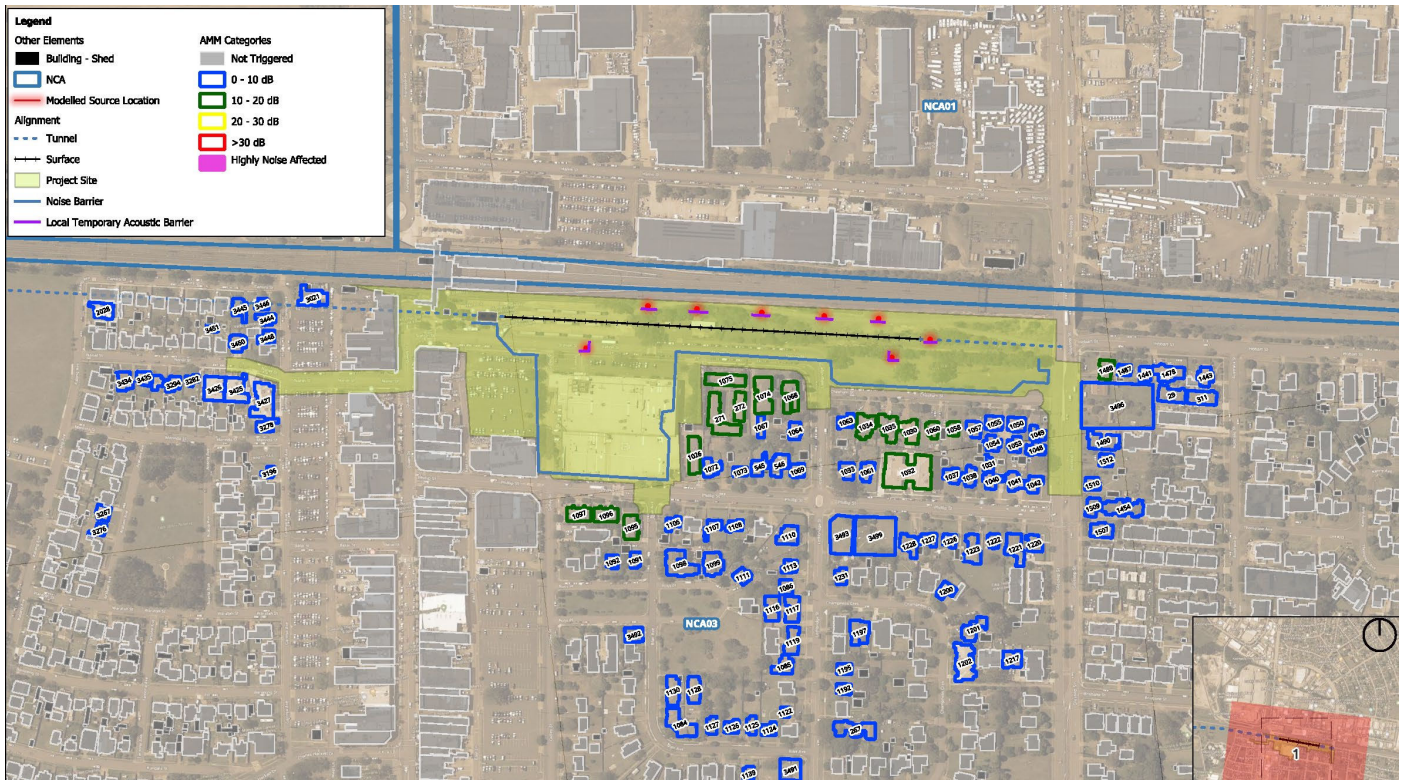


FIGURE 4. EXTENDED CONCRETE POURS NOISE MODELLING MAP SHOWING PROPERTIES CONSULTED WITH IN THE 10 – 20 DB AMM CATEGORY



FIGURE 5. CONCRETE FINISHING WORKS NOISE MODELLING MAP SHOWING PROPERTIES CONSULTED WITH IN THE 10 – 20 DD AMM

## 4 Conclusion

All consultation undertaken to date, including monthly construction updates; OOHW notifications, specific notifications and door knocks to receivers identified as the most highly noise impacted /closest to the works has resulted in no feedback or preferences on specific mitigation measures or respite periods.

The standard mitigation measures and respite requirements established in the Sydney Metro Construction Noise and Vibration Standard and Project EPL 21807, will be implemented during the works and follow-up consultation will be undertaken by the Parklife Metro Community Place Manager to ascertain the effectiveness of the implemented controls and seek additional feedback.

As per E57, if any feedback is received it will be considered and implemented where feasible, and any specific feedback or preferences on mitigation measures will require a revision of the DNVIS.

# Appendix A Impacted properties and consultation records – oversized plant and equipment deliveries

Residential address	Notification undertaken	Date	Outcome
<b>Unit 1, 31 Phillip Street</b>	Monthly notification	28 November 2023	Stakeholder advised that no issue with proposed works, and no preference on mitigation/respite.  <b>No feedback received to date.</b>
	OOHW notification	4 October 2023 17 October 2023	
	Specific notification	4 October 2023 6 October 2023 17 October 2023 1 November 2023	
	Campaign email	4 October 2023 17 October 2023 1 November 2023 28 November 2023	
	Doorknock	4 October 2023	
<b>Unit 2, 31 Phillip Street</b>	Monthly notification	28 November 2023	No answer or feedback provided.  <b>No feedback received to date.</b>
	OOHW notification	4 October 2023 17 October 2023	
	Specific notification	4 October 2023 6 October 2023 17 October 2023 1 November 2023	
	Campaign email	4 October 2023 17 October 2023 1 November 2023 28 November 2023	
	Doorknock	4 October 2023 6 October 2023	

<b>Unit 3, 31 Phillip Street</b>	Monthly notification	28 November 2023	No answer or feedback provided.
			<b>No feedback received to date.</b>
	OOHW notification	4 October 2023 17 October 2023	
	Specific notification	4 October 2023 6 October 2023 17 October 2023 1 November 2023	
	Campaign email	4 October 2023 17 October 2023 1 November 2023 28 November 2023	
	Doorknock	4 October 2023 6 October 2023	
<b>Unit 4, 31 Phillip Street</b>	Monthly notification	28 November 2023	No answer or feedback provided.
			<b>No feedback received to date.</b>
	OOHW notification	4 October 2023 17 October 2023	
	Specific notification	4 October 2023 6 October 2023 17 October 2023 1 November 2023	
	Campaign email	4 October 2023 17 October 2023 1 November 2023 28 November 2023	
	Doorknock	4 October 2023 6 October 2023	
<b>Unit 5, 31 Phillip Street</b>	Monthly notification	28 November 2023	Stakeholder provided feedback on dust and lights from the previous contractor. Place Manager will liaise with Construction Team to provide mitigation prior to works commencing.
	OOHW notification	4 October 2023 17 October 2023	

	Specific notification	4 October 2023 6 October 2023 17 October 2023 1 November 2023	Stakeholder advised that no issue with proposed works, and no preference on mitigation/respite.
	Campaign email	4 October 2023 17 October 2023 1 November 2023 28 November 2023	<b>No feedback received to date.</b>
	Doorknock	4 October 2023	
<b>Unit 6, 31 Phillip Street</b>	Monthly notification	28 November 2023	Stakeholder advised that no issue with proposed works, and no preference on mitigation/respite.
	OOHW notification	4 October 2023 17 October 2023	<b>No feedback received to date.</b>
	Specific notification	4 October 2023 6 October 2023 17 October 2023 1 November 2023	
	Campaign email	4 October 2023 17 October 2023 1 November 2023 28 November 2023	
	Doorknock	4 October 2023	
<b>1A, 34-36 Phillip Street</b>	Monthly notification	28 November 2023	Stakeholder is moving out of property.
	OOHW notification	4 October 2023 17 October 2023	Stakeholder advised that no issue with proposed works, and no preference on mitigation/respite.
	Specific notification	4 October 2023 6 October 2023 17 October 2023 1 November 2023	<b>No feedback received to date.</b>
	Campaign email	4 October 2023 17 October 2023 1 November 2023 28 November 2023	
	Doorknock	4 October 2023	

<b>1B, 34-36 Phillip Street</b>	Monthly notification	28 November 2023	Stakeholder provided feedback on dust from the previous contractor. Place Manager will liaise with Construction Team to provide mitigation prior to works commencing.  Stakeholder advised that no issue with proposed works, and no preference on mitigation/respite.  <b>No feedback received to date.</b>
	OOHW notification	4 October 2023 17 October 2023	
	Specific notification	4 October 2023 6 October 2023 17 October 2023 1 November 2023	
	Campaign email	4 October 2023 17 October 2023 1 November 2023 28 November 2023	
	Doorknock	4 October 2023	
<b>1C, 34-36 Phillip Street</b>	Monthly notification	28 November 2023	No answer or feedback provided.  <b>No feedback received to date.</b>
	OOHW notification	4 October 2023 17 October 2023	
	Specific notification	4 October 2023 6 October 2023 17 October 2023 1 November 2023	
	Campaign email	4 October 2023 17 October 2023 1 November 2023 28 November 2023	
	Doorknock	4 October 2023 6 October 2023	
<b>2A, 34-36 Phillip Street</b>	Monthly notification	28 November 2023	No answer or feedback provided.  <b>No feedback received to date.</b>
	OOHW notification	4 October 2023 17 October 2023	

	Specific notification	4 October 2023 6 October 2023 17 October 2023 1 November 2023	
	Campaign email	4 October 2023 17 October 2023 1 November 2023 28 November 2023	
	Doorknock	4 October 2023 6 October 2023	
<b>2B, 34-36 Phillip Street</b>	Monthly notification	28 November 2023	Stakeholder provided feedback on dust from the previous contractor. Place Manager will liaise with Construction Team to provide mitigation prior to works commencing.
	OOHW notification	4 October 2023 17 October 2023	Stakeholder advised that no issue with proposed works, and no preference on mitigation/respite.
	Specific notification	4 October 2023 6 October 2023 17 October 2023 1 November 2023	<b>No feedback received to date.</b>
	Campaign email	4 October 2023 17 October 2023 1 November 2023 28 November 2023	
	Doorknock	4 October 2023	
<b>2C, 34-36 Phillip Street</b>	Monthly notification	28 November 2023	Stakeholder provided feedback on dust from the previous contractor. Place Manager will liaise with Construction Team to provide mitigation prior to works commencing.
	OOHW notification	4 October 2023 17 October 2023	Stakeholder advised that no issue with proposed works, and no preference on mitigation/respite.
	Specific notification	4 October 2023 6 October 2023 17 October 2023 1 November 2023	<b>No feedback received to date.</b>
	Campaign email	4 October 2023 17 October 2023 1 November 2023 28 November 2023	

	Doorknock	4 October 2023	
<b>3A, 34-36 Phillip Street</b>	Monthly notification	28 November 2023	No answer or feedback provided. <b>No feedback received to date.</b>
	OOHW notification	4 October 2023 17 October 2023	
	Specific notification	4 October 2023 6 October 2023 17 October 2023 1 November 2023	
	Campaign email	4 October 2023 17 October 2023 1 November 2023 28 November 2023	
	Doorknock	4 October 2023 6 October 2023	
<b>3B, 34-36 Phillip Street</b>	Monthly notification	28 November 2023	No answer or feedback provided. <b>No feedback received to date.</b>
	OOHW notification	4 October 2023 17 October 2023	
	Specific notification	4 October 2023 6 October 2023 17 October 2023 1 November 2023	
	Campaign email	4 October 2023 17 October 2023 1 November 2023 28 November 2023	
	Doorknock	4 October 2023 6 October 2023	
<b>3C, 34-36 Phillip Street</b>	Monthly notification	28 November 2023	No answer or feedback provided. <b>No feedback received to date.</b>
	OOHW notification	4 October 2023 17 October 2023	



	Specific notification	4 October 2023 6 October 2023 17 October 2023 1 November 2023	
	Campaign email	4 October 2023 17 October 2023 1 November 2023 28 November 2023	
	Doorknock	4 October 2023 6 October 2023	
<b>4A, 34-36 Phillip Street</b>	Monthly notification	28 November 2023	No answer or feedback provided.  <b>No feedback received to date.</b>
	OOHW notification	4 October 2023 17 October 2023	
	Specific notification	4 October 2023 6 October 2023 17 October 2023 1 November 2023	
	Campaign email	4 October 2023 17 October 2023 1 November 2023 28 November 2023	
	Doorknock	4 October 2023 6 October 2023	
<b>4B, 34-36 Phillip Street</b>	Monthly notification	28 November 2023	No answer or feedback provided.  <b>No feedback received to date.</b>
	OOHW notification	4 October 2023 17 October 2023	
	Specific notification	4 October 2023 6 October 2023 17 October 2023 1 November 2023	
	Campaign email	4 October 2023 17 October 2023 1 November 2023 28 November 2023	

	Doorknock	4 October 2023 6 October 2023	
<b>4C, 34-36 Phillip Street</b>	Monthly notification	28 November 2023	No answer or feedback provided.  <b>No feedback received to date.</b>
	OOHW notification	4 October 2023 17 October 2023	
	Specific notification	4 October 2023 6 October 2023 17 October 2023 1 November 2023	
	Campaign email	4 October 2023 17 October 2023 1 November 2023 28 November 2023	
	Doorknock	4 October 2023 6 October 2023	
<b>5A, 34-36 Phillip Street</b>	Monthly notification	28 November 2023	No answer or feedback provided.  <b>No feedback received to date.</b>
	OOHW notification	4 October 2023 17 October 2023	
	Specific notification	4 October 2023 6 October 2023 17 October 2023 1 November 2023	
	Campaign email	4 October 2023 17 October 2023 1 November 2023 28 November 2023	
	Doorknock	4 October 2023 6 October 2023	
<b>5B, 34-36 Phillip Street</b>	Monthly notification	28 November 2023	Stakeholder provided feedback on dust from the previous contractor. Place Manager will

	OOHW notification	4 October 2023 17 October 2023	liaise with Construction Team to provide mitigation prior to works commencing.
	Specific notification	4 October 2023 6 October 2023 17 October 2023 1 November 2023	Stakeholder advised that no issue with proposed works, and no preference on mitigation/respite.
	Campaign email	4 October 2023 17 October 2023 1 November 2023 28 November 2023	<b>No feedback received to date.</b>
	Doorknock	4 October 2023	
<b>5C, 34-36 Phillip Street</b>	Monthly notification	28 November 2023	Stakeholder provided feedback on dust from the previous contractor. Place Manager will liaise with Construction Team to provide mitigation prior to works commencing.
	OOHW notification	4 October 2023 17 October 2023	Stakeholder advised that no issue with proposed works, and no preference on mitigation/respite.
	Specific notification	4 October 2023 6 October 2023 17 October 2023 1 November 2023	<b>No feedback received to date.</b>
	Campaign email	4 October 2023 17 October 2023 1 November 2023 28 November 2023	
	Doorknock	4 October 2023	
<b>6A, 34-36 Phillip Street</b>	Monthly notification	28 November 2023	No answer or feedback provided. <b>No feedback received to date.</b>
	OOHW notification	4 October 2023 17 October 2023	
	Specific notification	4 October 2023 6 October 2023 17 October 2023 1 November 2023	

	Campaign email	4 October 2023 17 October 2023 1 November 2023 28 November 2023	
	Doorknock	4 October 2023 6 October 2023	
<b>6B, 34-36 Phillip Street</b>	Monthly notification	28 November 2023	Stakeholder provided feedback on dust from the previous contractor. Place Manager will liaise with Construction Team to provide mitigation prior to works commencing.
	OOHW notification	4 October 2023 17 October 2023	Stakeholder advised that no issue with proposed works, and no preference on mitigation/respice.
	Specific notification	4 October 2023 6 October 2023 17 October 2023 1 November 2023	<b>No feedback received to date.</b>
	Campaign email	4 October 2023 17 October 2023 1 November 2023 28 November 2023	
	Doorknock	4 October 2023	
<b>6C, 34-36 Phillip Street</b>	Monthly notification	28 November 2023	No answer or feedback provided. <b>No feedback received to date.</b>
	OOHW notification	4 October 2023 17 October 2023	
	Specific notification	4 October 2023 6 October 2023 17 October 2023 1 November 2023	
	Campaign email	4 October 2023 17 October 2023 1 November 2023 28 November 2023	
	Doorknock	4 October 2023 6 October 2023	

<b>Unit 1, 1 Station Street</b>	Monthly notification	28 November 2023	No answer or feedback provided. <b>No feedback received to date.</b>
	OOHW notification	4 October 2023 17 October 2023	
	Specific notification	4 October 2023 6 October 2023 17 October 2023 1 November 2023	
	Campaign email	4 October 2023 17 October 2023 1 November 2023 28 November 2023	
	Doorknock	4 October 2023 6 October 2023	
<b>Unit 2, 1 Station Street</b>	Monthly notification	28 November 2023	No answer or feedback provided. <b>No feedback received to date.</b>
	OOHW notification	4 October 2023 17 October 2023	
	Specific notification	4 October 2023 6 October 2023 17 October 2023 1 November 2023	
	Campaign email	4 October 2023 17 October 2023 1 November 2023 28 November 2023	
	Doorknock	4 October 2023 6 October 2023	
<b>Unit 3, 1 Station Street</b>	Monthly notification	28 November 2023	Stakeholder advised that no issue with proposed works, and no preference on mitigation/respice. <b>No feedback received to date.</b>
	OOHW notification	4 October 2023 17 October 2023	

	Specific notification	4 October 2023 6 October 2023 17 October 2023 1 November 2023	
	Campaign email	4 October 2023 17 October 2023 1 November 2023 28 November 2023	
	Doorknock	4 October 2023 6 October 2023	
<b>Unit 4, 1 Station Street</b>	Monthly notification	28 November 2023	No answer or feedback provided.  <b>No feedback received to date.</b>
	OOHW notification	4 October 2023 17 October 2023	
	Specific notification	4 October 2023 6 October 2023 17 October 2023 1 November 2023	
	Campaign email	4 October 2023 17 October 2023 1 November 2023 28 November 2023	
	Doorknock	4 October 2023 6 October 2023	
<b>Unit 5, 1 Station Street</b>	Monthly notification	28 November 2023	No answer or feedback provided.  <b>No feedback received to date.</b>
	OOHW notification	4 October 2023 17 October 2023	
	Specific notification	4 October 2023 6 October 2023 17 October 2023 1 November 2023	
	Campaign email	4 October 2023 17 October 2023 1 November 2023 28 November 2023	

	Doorknock	4 October 2023 6 October 2023	
<b>Unit 6, 1 Station Street</b>	Monthly notification	28 November 2023	No answer or feedback provided.  <b>No feedback received to date.</b>
	OOHW notification	4 October 2023 17 October 2023	
	Specific notification	4 October 2023 6 October 2023 17 October 2023 1 November 2023	
	Campaign email	4 October 2023 17 October 2023 1 November 2023 28 November 2023	
	Doorknock	4 October 2023 6 October 2023	
<b>Unit 7, 1 Station Street</b>	Monthly notification	28 November 2023	No answer or feedback provided.  <b>No feedback received to date.</b>
	OOHW notification	4 October 2023 17 October 2023	
	Specific notification	4 October 2023 6 October 2023 17 October 2023 1 November 2023	
	Campaign email	4 October 2023 17 October 2023 1 November 2023 28 November 2023	
	Doorknock	4 October 2023 6 October 2023	
<b>Unit 1, 2 Station Street</b>	Monthly notification	28 November 2023	No answer or feedback provided.  <b>No feedback received to date.</b>

OOHW notification 4 October 2023  
17 October 2023

---

Specific notification 4 October 2023  
6 October 2023  
17 October 2023  
1 November 2023

---

Campaign email 4 October 2023  
17 October 2023  
1 November 2023  
28 November 2023

---

Doorknock 4 October 2023  
6 October 2023

---

**Unit 2, 2 Station Street**

Monthly notification 28 November 2023

Stakeholder advised that no issue with proposed works, and no preference on mitigation/respice.

---

OOHW notification 4 October 2023  
17 October 2023

**No feedback received to date.**

---

Specific notification 4 October 2023  
6 October 2023  
17 October 2023  
1 November 2023

---

Campaign email 4 October 2023  
17 October 2023  
1 November 2023  
28 November 2023

---

Doorknock 4 October 2023  
6 October 2023

---

**Unit 3, 2 Station Street**

Monthly notification 28 November 2023

No answer or feedback provided.

**No feedback received to date.**

---

OOHW notification 4 October 2023  
17 October 2023

---

Specific notification 4 October 2023  
6 October 2023  
17 October 2023  
1 November 2023



Campaign email  
4 October 2023  
17 October 2023  
1 November 2023  
28 November 2023

---

Doorknock  
4 October 2023  
6 October 2023

---

**Unit 4, 2 Station Street**

Monthly notification  
28 November 2023

No answer or feedback provided.

**No feedback received to date.**

---

OOHW notification  
4 October 2023  
17 October 2023

---

Specific notification  
4 October 2023  
6 October 2023  
17 October 2023  
1 November 2023

---

Campaign email  
4 October 2023  
17 October 2023  
1 November 2023  
28 November 2023

---

Doorknock  
4 October 2023  
6 October 2023

---

**Unit 5, 2 Station Street**

Monthly notification  
28 November 2023

No answer or feedback provided.

**No feedback received to date.**

---

OOHW notification  
4 October 2023  
17 October 2023

---

Specific notification  
4 October 2023  
6 October 2023  
17 October 2023  
1 November 2023

---

Campaign email  
4 October 2023  
17 October 2023  
1 November 2023  
28 November 2023

---

Doorknock  
4 October 2023  
6 October 2023

---

<b>Unit 6, 2 Station Street</b>	Monthly notification	28 November 2023	No answer or feedback provided. <b>No feedback received to date.</b>
	OOHW notification	4 October 2023 17 October 2023	
	Specific notification	4 October 2023 6 October 2023 17 October 2023 1 November 2023	
	Campaign email	4 October 2023 17 October 2023 1 November 2023 28 November 2023	
	Doorknock	4 October 2023 6 October 2023	
<b>Unit 7, 2 Station Street</b>	Monthly notification	28 November 2023	No answer or feedback provided. <b>No feedback received to date.</b>
	OOHW notification	4 October 2023 17 October 2023	
	Specific notification	4 October 2023 6 October 2023 17 October 2023 1 November 2023	
	Campaign email	4 October 2023 17 October 2023 1 November 2023 28 November 2023	
	Doorknock	4 October 2023 6 October 2023	
<b>Unit 8, 2 Station Street</b>	Monthly notification	28 November 2023	No answer or feedback provided. <b>No feedback received to date.</b>
	OOHW notification	4 October 2023 17 October 2023	

	Specific notification	4 October 2023 6 October 2023 17 October 2023 1 November 2023	
	Campaign email	4 October 2023 17 October 2023 1 November 2023 28 November 2023	
	Doorknock	4 October 2023 6 October 2023	
<b>Unit 1, 3 Station Street</b>	Monthly notification	28 November 2023	No answer or feedback provided.  <b>No feedback received to date.</b>
	OOHW notification	4 October 2023 17 October 2023	
	Specific notification	4 October 2023 6 October 2023 17 October 2023 1 November 2023	
	Campaign email	4 October 2023 17 October 2023 1 November 2023 28 November 2023	
	Doorknock	4 October 2023 6 October 2023	
<b>Unit 2, 3 Station Street</b>	Monthly notification	28 November 2023	Stakeholder advised that no issue with proposed works, and no preference on mitigation/respice.  <b>No feedback received to date.</b>
	OOHW notification	4 October 2023 17 October 2023	
	Specific notification	4 October 2023 6 October 2023 17 October 2023 1 November 2023	
	Campaign email	4 October 2023 17 October 2023 1 November 2023 28 November 2023	

	Doorknock	4 October 2023 6 October 2023	
<b>Unit 3, 3 Station Street</b>	Monthly notification	28 November 2023	Stakeholder advised that no issue with proposed works, and no preference on mitigation/respice.  <b>No feedback received to date.</b>
	OOHW notification	4 October 2023 17 October 2023	
	Specific notification	4 October 2023 6 October 2023 17 October 2023 1 November 2023	
	Campaign email	4 October 2023 17 October 2023 1 November 2023 28 November 2023	
	Doorknock	4 October 2023 6 October 2023	
<b>Unit 4, 3 Station Street</b>	Monthly notification	28 November 2023	Stakeholder advised that no issue with proposed works, and no preference on mitigation/respice.  <b>No feedback received to date.</b>
	OOHW notification	4 October 2023 17 October 2023	
	Specific notification	4 October 2023 6 October 2023 17 October 2023 1 November 2023	
	Campaign email	4 October 2023 17 October 2023 1 November 2023 28 November 2023	
	Doorknock	4 October 2023 6 October 2023	
<b>Unit 5, 3 Station Street</b>	Monthly notification	28 November 2023	No answer or feedback provided.  <b>No feedback received to date.</b>

	OOHW notification	4 October 2023 17 October 2023	
	Specific notification	4 October 2023 6 October 2023 17 October 2023 1 November 2023	
	Campaign email	4 October 2023 17 October 2023 1 November 2023 28 November 2023	
	Doorknock	4 October 2023 6 October 2023	
<b>Unit 6, 3 Station Street</b>	Monthly notification	28 November 2023	Stakeholder advised that no issue with proposed works, and no preference on mitigation/respice.
	OOHW notification	4 October 2023 17 October 2023	<b>No feedback received to date.</b>
	Specific notification	4 October 2023 6 October 2023 17 October 2023 1 November 2023	
	Campaign email	4 October 2023 17 October 2023 1 November 2023 28 November 2023	
	Doorknock	4 October 2023 6 October 2023	
<b>Unit 7, 3 Station Street</b>	Monthly notification	28 November 2023	Stakeholder advised that no issue with proposed works, and no preference on mitigation/respice.
	OOHW notification	4 October 2023 17 October 2023	<b>No feedback received to date.</b>
	Specific notification	4 October 2023 6 October 2023 17 October 2023 1 November 2023	

	Campaign email	4 October 2023 17 October 2023 1 November 2023 28 November 2023	
	Doorknock	4 October 2023 6 October 2023	
<b>Unit 8, 3 Station Street</b>	Monthly notification	28 November 2023	Stakeholder advised that no issue with proposed works, and no preference on mitigation/respice.
	OOHW notification	4 October 2023 17 October 2023	<b>No feedback received to date.</b>
	Specific notification	4 October 2023 6 October 2023 17 October 2023 1 November 2023	
	Campaign email	4 October 2023 17 October 2023 1 November 2023 28 November 2023	
	Doorknock	4 October 2023 6 October 2023	
<b>Unit 9, 3 Station Street</b>	Monthly notification	28 November 2023	No answer or feedback provided. <b>No feedback received to date.</b>
	OOHW notification	4 October 2023 17 October 2023	
	Specific notification	4 October 2023 6 October 2023 17 October 2023 1 November 2023	
	Campaign email	4 October 2023 17 October 2023 1 November 2023 28 November 2023	
	Doorknock	4 October 2023 6 October 2023	

<b>Unit 10, 3 Station Street</b>	Monthly notification	28 November 2023	No answer or feedback provided. <b>No feedback received to date.</b>
	OOHW notification	4 October 2023 17 October 2023	
	Specific notification	4 October 2023 6 October 2023 17 October 2023 1 November 2023	
	Campaign email	4 October 2023 17 October 2023 1 November 2023 28 November 2023	
	Doorknock	4 October 2023 6 October 2023	
<b>Unit 11, 3 Station Street</b>	Monthly notification	28 November 2023	No answer or feedback provided. <b>No feedback received to date.</b>
	OOHW notification	4 October 2023 17 October 2023	
	Specific notification	4 October 2023 6 October 2023 17 October 2023 1 November 2023	
	Campaign email	4 October 2023 17 October 2023 1 November 2023 28 November 2023	
	Doorknock	4 October 2023 6 October 2023	
<b>Unit 12, 3 Station Street</b>	Monthly notification	28 November 2023	No answer or feedback provided. <b>No feedback received to date.</b>
	OOHW notification	4 October 2023 17 October 2023	

	Specific notification	4 October 2023 6 October 2023 17 October 2023 1 November 2023	
	Campaign email	4 October 2023 17 October 2023 1 November 2023 28 November 2023	
	Doorknock	4 October 2023 6 October 2023	
<b>Unit 13, 3 Station Street</b>	Monthly notification	28 November 2023	Stakeholder advised that no issue with proposed works, and no preference on mitigation/respice.
	OOHW notification	4 October 2023 17 October 2023	<b>No feedback received to date.</b>
	Specific notification	4 October 2023 6 October 2023 17 October 2023 1 November 2023	
	Campaign email	4 October 2023 17 October 2023 1 November 2023 28 November 2023	
	Doorknock	4 October 2023 6 October 2023	
<b>Unit 14, 3 Station Street</b>	Monthly notification	28 November 2023	No answer or feedback provided.
	OOHW notification	4 October 2023 17 October 2023	<b>No feedback received to date.</b>
	Specific notification	4 October 2023 6 October 2023 17 October 2023 1 November 2023	
	Campaign email	4 October 2023 17 October 2023 1 November 2023 28 November 2023	



Doorknock  
4 October 2023  
6 October 2023

---

<b>Unit 15, 3 Station Street</b>	Monthly notification	28 November 2023	No answer or feedback provided.  <b>No feedback received to date.</b>
	OOHW notification	4 October 2023 17 October 2023	
	Specific notification	4 October 2023 6 October 2023 17 October 2023 1 November 2023	
	Campaign email	4 October 2023 17 October 2023 1 November 2023 28 November 2023	
	Doorknock	4 October 2023 6 October 2023	

---

<b>Unit 16, 3 Station Street</b>	Monthly notification	28 November 2023	Stakeholder advised that no issue with proposed works, and no preference on mitigation/respite.  <b>No feedback received to date.</b>
	OOHW notification	4 October 2023 17 October 2023	
	Specific notification	4 October 2023 6 October 2023 17 October 2023 1 November 2023	
	Campaign email	4 October 2023 17 October 2023 1 November 2023 28 November 2023	
	Doorknock	4 October 2023 6 October 2023	

---

<b>Unit 17, 3 Station Street</b>	Monthly notification	28 November 2023	Stakeholder advised that no issue with proposed works, and no
----------------------------------	----------------------	------------------	---

	OOHW notification	4 October 2023 17 October 2023	preference on mitigation/respite.  <b>No feedback received to date.</b>
	Specific notification	4 October 2023 6 October 2023 17 October 2023 1 November 2023	
	Campaign email	4 October 2023 17 October 2023 1 November 2023 28 November 2023	
	Doorknock	4 October 2023 6 October 2023	
<b>Unit 18, 3 Station Street</b>	Monthly notification	28 November 2023	No answer or feedback provided.  <b>No feedback received to date.</b>
	OOHW notification	4 October 2023 17 October 2023	
	Specific notification	4 October 2023 6 October 2023 17 October 2023 1 November 2023	
	Campaign email	4 October 2023 17 October 2023 1 November 2023 28 November 2023	
	Doorknock	4 October 2023 6 October 2023	
<b>Unit 19, 3 Station Street</b>	Monthly notification	28 November 2023	No answer or feedback provided.  <b>No feedback received to date.</b>
	OOHW notification	4 October 2023 17 October 2023	
	Specific notification	4 October 2023 6 October 2023 17 October 2023 1 November 2023	

Campaign email  
4 October 2023  
17 October 2023  
1 November 2023  
28 November 2023

Doorknock  
4 October 2023  
6 October 2023

**3 Chesham Street**

Monthly notification  
28 November 2023

Stakeholder advised that no issue with proposed works, and no preference on mitigation/respice.

OOHW notification  
4 October 2023  
17 October 2023

**No feedback received to date.**

Specific notification  
4 October 2023  
6 October 2023  
17 October 2023  
1 November 2023

Campaign email  
4 October 2023  
17 October 2023  
1 November 2023  
28 November 2023

Doorknock  
4 October 2023  
6 October 2023

**3A Chesham Street**

Monthly notification  
28 November 2023

Stakeholder advised that no issue with proposed works, and no preference on mitigation/respice.

OOHW notification  
4 October 2023  
17 October 2023

**No feedback received to date.**

Specific notification  
4 October 2023  
6 October 2023  
17 October 2023  
1 November 2023

Campaign email  
4 October 2023  
17 October 2023  
1 November 2023  
28 November 2023

Doorknock  
4 October 2023  
6 October 2023

<b>2 Chesham Street</b>	Monthly notification	28 November 2023	Stakeholder advised that no issue with proposed works, and no preference on mitigation/respice.  <b>No feedback received to date.</b>
	OOHW notification	4 October 2023 17 October 2023	
	Specific notification	4 October 2023 6 October 2023 17 October 2023 1 November 2023	
	Campaign email	4 October 2023 17 October 2023 1 November 2023 28 November 2023	
	Doorknock	4 October 2023 6 October 2023	
<b>2A Chesham Street</b>	Monthly notification	28 November 2023	Stakeholder advised that no issue with proposed works, and no preference on mitigation/respice.  <b>No feedback received to date.</b>
	OOHW notification	4 October 2023 17 October 2023	
	Specific notification	4 October 2023 6 October 2023 17 October 2023 1 November 2023	
	Campaign email	4 October 2023 17 October 2023 1 November 2023 28 November 2023	
	Doorknock	4 October 2023 6 October 2023	
<b>1 Chesham Street</b>	Monthly notification	28 November 2023	Stakeholder advised that no issue with proposed works, and no

	OOHW notification	4 October 2023 17 October 2023	preference on mitigation/respite.  <b>No feedback received to date.</b>
	Specific notification	4 October 2023 6 October 2023 17 October 2023 1 November 2023	
	Campaign email	4 October 2023 17 October 2023 1 November 2023 28 November 2023	
	Doorknock	4 October 2023 6 October 2023	
<b>1A Chesham Street</b>	Monthly notification	28 November 2023	Stakeholder advised that no issue with proposed works, and no preference on mitigation/respite.  <b>No feedback received to date.</b>
	OOHW notification	4 October 2023 17 October 2023	
	Specific notification	4 October 2023 6 October 2023 17 October 2023 1 November 2023	
	Campaign email	4 October 2023 17 October 2023 1 November 2023 28 November 2023	
	Doorknock	4 October 2023 6 October 2023	

# Appendix B Communication materials

## MONTHLY CONSTRUCTION UPDATE

Sydney Metro – Western Sydney Airport

### Notification – St Marys Metro Station

28 November 2023

Sydney Metro is Australia’s biggest public transport project.

Sydney Metro – Western Sydney Airport is the new metro railway line which will service Greater Western Sydney and the new Western Sydney International (Nancy-Bird Walton) Airport. A city-shaping project, the 23-kilometre new railway will connect the Western Sydney Aerotropolis in the south with St Marys in the north – where customers can connect to the existing Sydney Trains suburban T1 Western Line. The NSW and Australian governments have a shared objective of having Sydney Metro – Western Sydney Airport operational when the airport opens for passenger services.

Parklife Metro consortium was awarded the Station, Systems, Trains, Operations, and Maintenance (SSTOM) contract in late December 2022.

#### December work activity includes:

- Continuing site establishment activities, including delivery and installation of site sheds and equipment, temporary utilities for a double storey building on the south of the site
- Ongoing deliveries of machinery, equipment and materials
- Excavations, piling, formwork, steel fixing, and concrete pours inside the station box
- Surveying and geotechnical investigation activities, including potholing and testing
- Site photography, including using drone camera above the construction site.

#### Out-of-hours work activity includes:

- Ongoing deliveries of over-sized equipment, machinery and surveying work, including CCTV of existing utilities underground on surrounding streets
- This work will involve local lane and road closures, however noise impacts will be minimal
- Extended work hours for large concrete pours and concrete finishing works inside the station box.

#### What to expect and managing impacts:

- Work and equipment used in these work activities may generate some noise, vibration, and dust.
- Mitigation measures will be in place to minimise impacts including installing noise blankets, where feasible, respite periods during high noise activities, noise and vibration monitoring, and water carts for dust suppression
- Increased light and heavy vehicle movements on surrounding roads. All vehicles will be turned off when not in use, non-tonal reversing alarms will be fitted to plant and machinery and trucks will avoid reversing into and on site, where feasible
- Temporary lighting to ensure a safe worksite will be directed away from properties
- Communication will be limited to radios only when moving and unloading equipment, with no use of horns or loud radios
- Traffic control and signage to safely assist motorists, pedestrians, and cyclists
- Most of our work will be completed during standard construction hours **Monday to Friday, 7am to 6pm** and **Saturday, 8am to 1pm**
- Out-of-hours work activities will be carried out to mitigate quality and safety risks, and in line with the project Environment Protection Licence, Road Occupancy Licences, and Transport for NSW requirements.

*Surrounding residents and businesses will be notified in advance of any out-of-hours work.*



Subscribe for updates at [sydneymetrowsa@transport.nsw.gov.au](mailto:sydneymetrowsa@transport.nsw.gov.au) <https://www.sydneymetro.info/privacy-policy> PLM00010



## Three month lookahead of out-of-hours activities

Activity	Equipment	Work hours	Timing	
<b>Oversized plant and equipment deliveries</b>	Traffic management, light and heavy vehicles, generators, lighting towers and mobile cranes	<b>10pm to 7am, Monday to Friday</b>	December 2023 – March 2024	Ongoing
<b>Concrete pours - piling works and station box base slab and walls</b>	Concrete pump, vibrators, concrete trucks, generators and lighting towers	<b>6pm to 8pm, Monday to Friday</b> <i>Pours are permitted up to 9pm, Monday to Friday, up to 12 times only*</i> <b>1pm to 4pm, Saturdays</b>	December 2023 – March 2024	Ongoing
<b>Concrete finishing works inside the station box</b>	Power floats, concrete screed, vibrators, hand tools, generators and lighting towers	<b>6pm to 10pm, Monday to Friday</b> <b>1pm to 4pm, Saturdays</b>	December 2023 – March 2024	Ongoing
<b>CCTV survey investigations of the existing sewer line on surrounding streets</b>	Traffic management, light vehicles and surveying equipment.	<b>6pm to 7am, Monday to Friday</b>	December 2023	Three shifts
<b>Piling rig removal from inside the station box</b>	Mobile cranes, heavy vehicles and trailers, traffic management and light vehicles	5:30am to 10pm	January 2024	One shift

### Equipment used:

Equipment used will include, but is not limited to, excavators, elevated work platforms, franna cranes, mobile cranes, forklifts and manitous, concrete pumps and concrete trucks, concrete vibrators water carts, jackhammers, compaction equipment, generators, vacuum trucks, dewatering pump, handheld and tools, lighting towers, light and heavy vehicles, and traffic management.

### Happy holidays

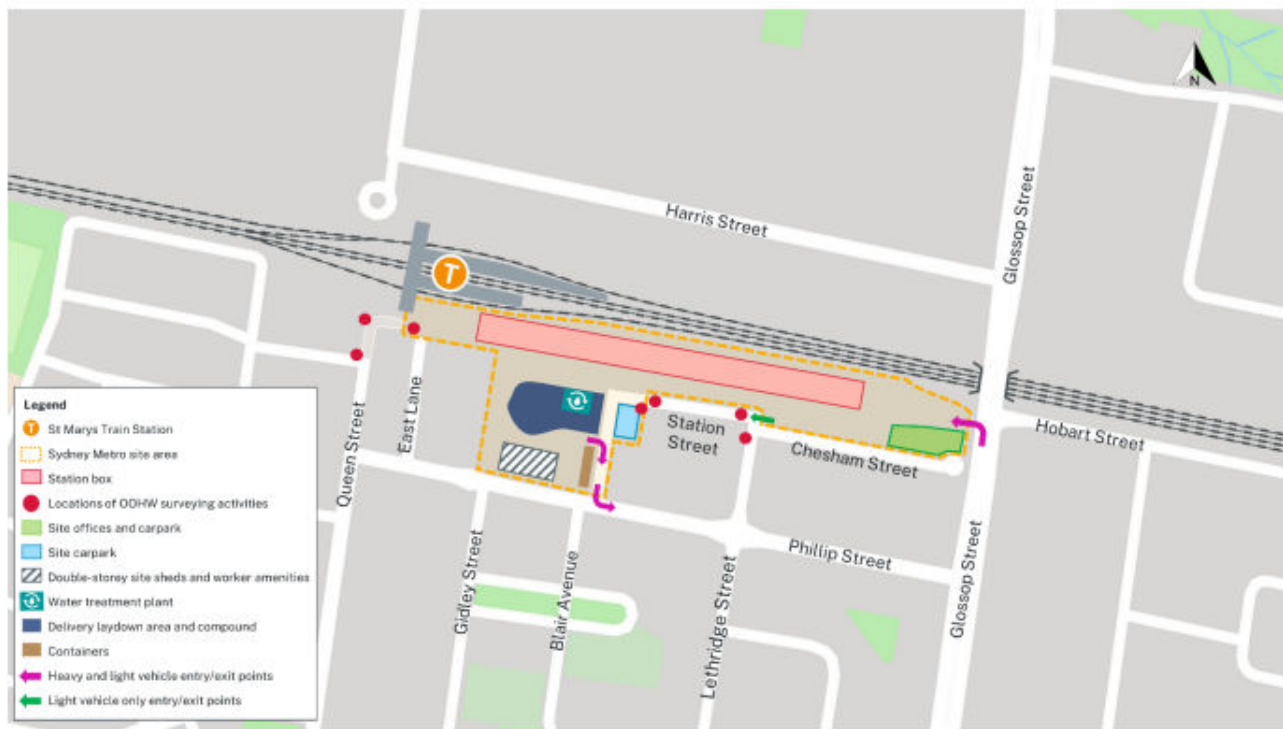
Parklife Metro project team will be closing our sites from **Thursday, 21 December 2023**, and returning to site on **Wednesday, 3 January 2024** (inclusive). Throughout this period we will still be conducting routine security and maintenance checks.

We wish you and your family a safe and happy holiday period.



Subscribe for updates at [sydneymetrowsa@transport.nsw.gov.au](mailto:sydneymetrowsa@transport.nsw.gov.au) <https://www.sydneymetro.info/privacy-policy> PLM00010

## St Marys Metro Station work area:



## Contact us

Please contact Jess, the dedicated Place Manager from the Parklife Metro Community Team. If you have any questions or would like to provide feedback about the work, including appropriate respite periods, please contact the team on **1800 717 703** or email [sydneymetrowsa@transport.nsw.gov.au](mailto:sydneymetrowsa@transport.nsw.gov.au).

A Detailed Noise and Vibration Impact Statement (DNVIS) for the area has been prepared, including proposed mitigation measures as a result of noise modelling. We invite your feedback if alternative measures is available online at [www.parklifemetro.com.au/SSTOMCCS](http://www.parklifemetro.com.au/SSTOMCCS) (community). To provide feedback, please contact the Parklife Metro Community Team.

We value your input regarding our communications approach and engagement.

Thank you for your cooperation while we complete this essential work.

## Contact us



24-hour Community Information Line **1800 717 703**



[sydneymetrowsa@transport.nsw.gov.au](mailto:sydneymetrowsa@transport.nsw.gov.au)



Sydney Metro – Western Sydney Airport,  
PO Box K659, Haymarket NSW 1240



Access information in over 100 languages Download **Sydney Metro Connect** from the App store or get it on Google Play.



### Translating and interpreting service

If you need help understanding this information, please contact the Translating and Interpreting Service on **131 450** and ask them to call us on **1800 717 703**.



Sydney Metro – Western Sydney Airport

# Out-of-hours notification – St Marys Metro Station

17 October 2023

Sydney Metro is Australia's biggest public transport project.

Sydney Metro – Western Sydney Airport is the new metro railway line which will service Greater Western Sydney and the new Western Sydney International (Nancy-Bird Walton) Airport. A city-shaping project, the 23-kilometre new railway will connect the Western Sydney Aerotropolis in the south with St Marys in the north – where customers can connect to the existing Sydney Trains suburban T1 Western Line. The NSW and Australian governments have a shared objective of having Sydney Metro – Western Sydney Airport operational when the airport opens for passenger services.

Parklife Metro consortium was awarded the Stations, Systems, Trains, Operations, and Maintenance (SSTOM) contract for Sydney Metro – Western Sydney Airport in late December 2022.

Parklife Metro will deliver 12 new metro trains, six new stations between St Marys and the new Aerotropolis, rail systems and the stabling and maintenance facility to be built at Orchard Hills. Parklife Metro will operate and maintain the Western Sydney Airport line for 15 years after it becomes operational.

## Out-of-hours work:

We will be undertaking out-of-hours work to remove a 400-tonne mobile crane from the St Marys Metro Station site.

Due to the size of the mobile crane, this work will be carried out at night when there is approval to occupy the roadway, to minimise traffic disruption and reduce safety risks to workers and road users.

We will require **one shift** to remove the crane, on **Tuesday 24 October 2023**, weather and site conditions permitting.

If the work cannot be completed on **Tuesday 24 October 2023**, work will take place the following week, between **Tuesday 24 October** and **Tuesday 31 October 2023**.

Out-of-hours work will be between **10pm** and **7am**.

## What to expect:

- Work and equipment used in these activities may generate intermittent periods of noise. The project team will take every step possible to minimise noise impacts; however, there will be times when the work may be noisy, such as when loading the oversize equipment and heavy vehicles are entering and exiting the site. Mitigation measures will be in place to minimise these impacts, including noise monitoring during our work.
- An increase in light and heavy vehicles on surrounding streets. All vehicles will be turned off when not in use, non-tonal reversing alarms will be fitted to plant and machinery, and trucks will avoid reversing into and on site, where feasible.
- Temporary lighting to ensure a safe worksite, which will be directed away from properties.
- Communication will be limited to radios only when moving and unloading equipment, with no use of horns or loud radios.
- Traffic control and signage to safely assist motorists, pedestrians, and cyclists.

## Equipment used:

Equipment used on site includes traffic management, light and heavy vehicles, generators, lighting towers and mobile crane.

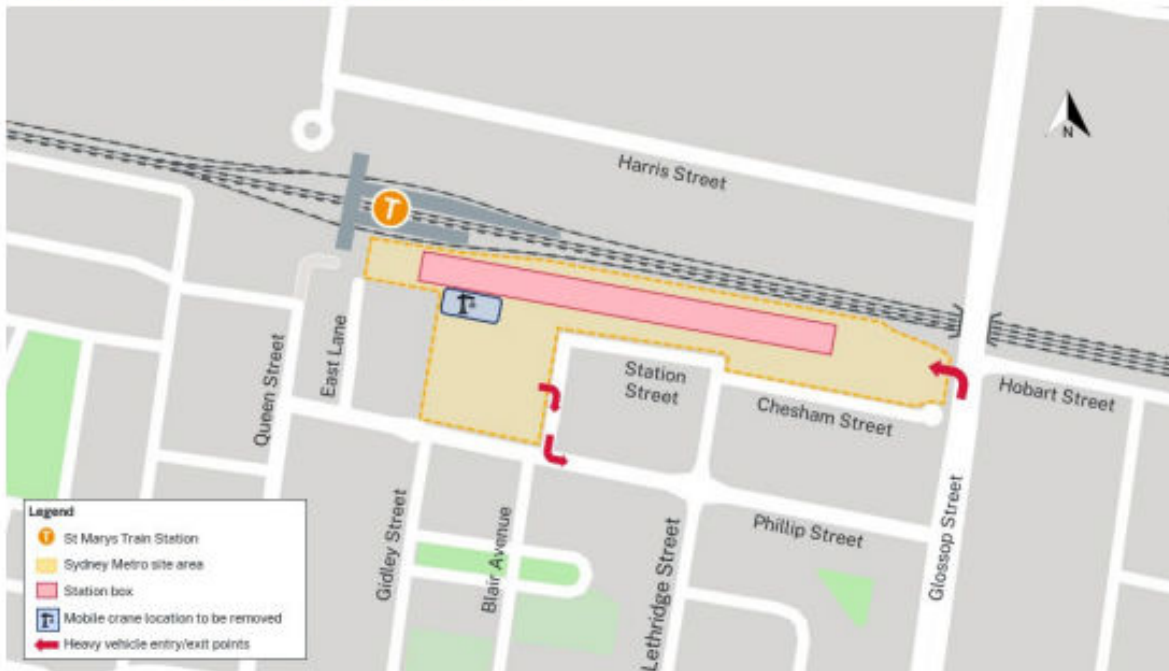


Subscribe for updates at [sydneymetrowsa@transport.nsw.gov.au](mailto:sydneymetrowsa@transport.nsw.gov.au)



<https://www.sydneymetro.info/privacy-policy>  
PLM009

## St Marys out-of-hours work location



Detailed Noise and Vibration Impact Statement (DNVIS) for the area has been prepared including proposed mitigation measures as a result of noise modelling. We invite your feedback if alternative measures may be required for your specific circumstances.

To provide feedback please contact the Parklife Metro community team on **1800 717 703** or **[sydneymetrowsa@transport.nsw.gov.au](mailto:sydneymetrowsa@transport.nsw.gov.au)**.

### Contact us

Please contact Jess, the dedicated Place Manager from the Parklife Metro community team on **1800 717 703** or email **[sydneymetrowsa@transport.nsw.gov.au](mailto:sydneymetrowsa@transport.nsw.gov.au)** if you have any questions, or would like to provide feedback about the work, including appropriate respite periods.

We will continue to keep you updated on the progress of work in your area. If you would prefer to receive updates by email, please send a request to **[sydneymetrowsa@transport.nsw.gov.au](mailto:sydneymetrowsa@transport.nsw.gov.au)** and we will add you to the distribution list.

Sydney Metro has launched Sydney Metro Connect – a new way to stay informed. You can download Sydney Metro Connect on the App Store or get it on Google Play.

We value your input regarding our communications approach and engagement.

Thank you for your cooperation while we complete this essential work.

### Contact us



24-hour Community Information Line **1800 717 703**



**[sydneymetrowsa@transport.nsw.gov.au](mailto:sydneymetrowsa@transport.nsw.gov.au)**



Sydney Metro – Western Sydney Airport,  
PO Box K659, Haymarket NSW 1240



Access information in over 100 languages  
Download **Sydney Metro Connect** from the App store or get it on Google Play.



### Translating and interpreting service

If you need help understanding this information, please contact the Translating and Interpreting Service on **131 450** and ask them to call us on **1800 717 703**.

# Out-of-hours work - St Marys Metro Station

Wednesday 1 November 2023

An urgent concrete pour is required at the St Marys metro station site, resulting in an extension of our work hours from **6pm to 9pm, Wednesday 1 November 2023**. This will be for **one shift** only. Our concrete pours are required to be continuous, to ensure the quality of the concrete is maintained.

Work to be completed will include concreting works, site clean-up, and truck movements. We will take every step possible to minimise noise impacts, however there will be times when the work may be intermittently noisy. Mitigation measures will be in place to minimise these impacts, including all plant and equipment fitted with non-tonal reversing alarms, and will avoiding reversing, where feasible; communication will be limited to radios only when moving equipment, with no use of horns or loud radios.

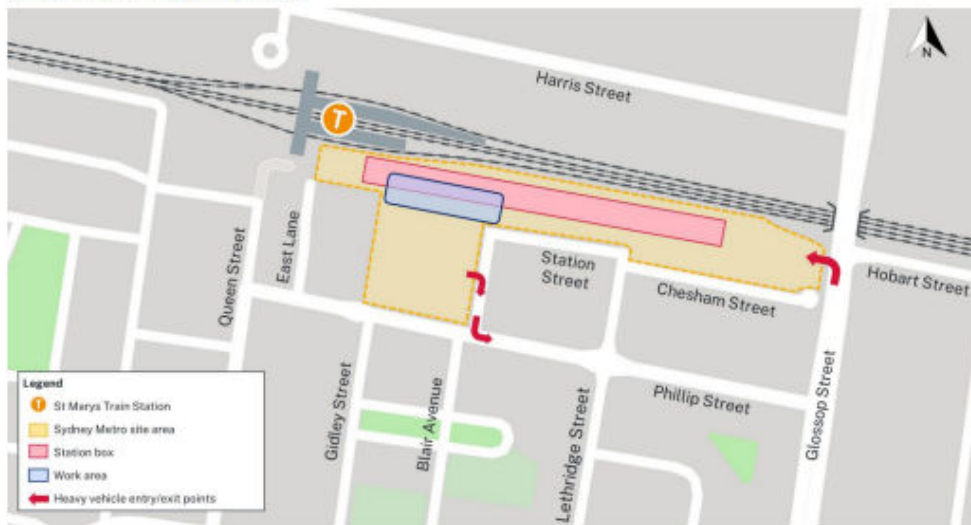
Equipment used on site includes traffic management, light and heavy vehicles, concrete trucks, generators and lighting towers.

Please contact Jess, the dedicated Place Manager from the Parklife Metro community team on **1800 717 703** or email [sydneymetrowsa@transport.nsw.gov.au](mailto:sydneymetrowsa@transport.nsw.gov.au) if you have any questions or would like to provide feedback about the work.

Thank you for your patience during this essential work.

Sydney Metro – Western Sydney Airport - PLM00012

## Out-of-hours work location:



Access information in over 100 languages

Download Sydney Metro Connect from the App store or get it on Google Play.

Sydney Metro – Western Sydney Airport - PLM00012

# Appendix C Conditions of Approval (SSI 10051)

Conditions of Approval relevant to this Consultation Report.

Reference	Description	How is this addressed
<b>E57</b>	<p><b>Out-of-hours work – Community consultation on respite</b></p> <p>In order to undertake out-of-hours work outside the work hours specified under Condition E38, appropriate respite periods for the out-of-hours work must be identified in consultation with the community at each affected location on a regular basis. This consultation must include (but not be limited to) providing the community with:</p>	This document.
	(a) a progressive schedule for periods no less than three (3) months, of likely out-of-hours work;	Section 3. Appendix B
	(b) a description of the potential work, location and duration of the out-of-hours work;	Section 3.1 Appendix B
	(c) the noise characteristics and likely noise levels of the work; and	Section 2.3 Section 3.4 (Figure 3) Appendix B
	(d) likely mitigation and management measures which aim to achieve the relevant NMLs under Condition E43 (including the circumstances of when respite or relocation offers will be available and details about how the affected community can access these offers).	Section 2.2 Section 2.3 Appendix B
	<p>The outcomes of the community consultation, the identified respite periods and the scheduling of the likely out-of-hour work must be provided to the ER, EPA and the Planning Secretary prior to the out-of-hours work commencing.</p> <p><i>Note: Respite periods can be any combination of days or hours where out-of-hours work would not be more than 5 dB(A) above the RBL at any residence.</i></p>	This report.

# Appendix D      Distribution list 200m radius of site

Unit	Street Number (from)	Street Number (to)	Street Name	Street Type	Suburb	State	Post Code	Residential	Non-residential	Feedback received
	2	0	ACACIA	AVE	ST MARYS	NSW	2760	Y	N	N
	4	0	ACACIA	AVE	ST MARYS	NSW	2760	Y	N	N
	6	0	ACACIA	AVE	ST MARYS	NSW	2760	Y	N	N
	8	0	ACACIA	AVE	ST MARYS	NSW	2760	Y	N	N
	10	0	ACACIA	AVE	ST MARYS	NSW	2760	Y	N	N
	12	0	ACACIA	AVE	ST MARYS	NSW	2760	Y	N	N
	14	0	ACACIA	AVE	ST MARYS	NSW	2760	Y	N	N
	16	0	ACACIA	AVE	ST MARYS	NSW	2760	Y	N	N
	18	0	ACACIA	AVE	ST MARYS	NSW	2760	Y	N	N
	20	0	ACACIA	AVE	ST MARYS	NSW	2760	Y	N	N
	1	0	AUSTRALIA	ST	ST MARYS	NSW	2760	Y	N	N
	2	0	AUSTRALIA	ST	ST MARYS	NSW	2760	Y	N	N
3	3	0	AUSTRALIA	ST	ST MARYS	NSW	2760	Y	N	N
2	3	0	AUSTRALIA	ST	ST MARYS	NSW	2760	Y	N	N
1	3	0	AUSTRALIA	ST	ST MARYS	NSW	2760	Y	N	N
	3	0	AUSTRALIA	ST	ST MARYS	NSW	2760	Y	N	N
5	3	0	AUSTRALIA	ST	ST MARYS	NSW	2760	Y	N	N
6	3	0	AUSTRALIA	ST	ST MARYS	NSW	2760	Y	N	N
4	3	0	AUSTRALIA	ST	ST MARYS	NSW	2760	Y	N	N
	4	0	AUSTRALIA	ST	ST MARYS	NSW	2760	Y	N	N
1	5	0	AUSTRALIA	ST	ST MARYS	NSW	2760	Y	N	N
6	5	0	AUSTRALIA	ST	ST MARYS	NSW	2760	Y	N	N
3	5	0	AUSTRALIA	ST	ST MARYS	NSW	2760	Y	N	N
5	5	0	AUSTRALIA	ST	ST MARYS	NSW	2760	Y	N	N
	5	0	AUSTRALIA	ST	ST MARYS	NSW	2760	Y	N	N
2	5	0	AUSTRALIA	ST	ST MARYS	NSW	2760	Y	N	N
4	5	0	AUSTRALIA	ST	ST MARYS	NSW	2760	Y	N	N
	7	0	AUSTRALIA	ST	ST MARYS	NSW	2760	Y	N	N
	7	0	AUSTRALIA	ST	ST MARYS	NSW	2760	Y	N	N
	9	0	AUSTRALIA	ST	ST MARYS	NSW	2760	Y	N	N
	9	0	AUSTRALIA	ST	ST MARYS	NSW	2760	Y	N	N
2	11	0	AUSTRALIA	ST	ST MARYS	NSW	2760	Y	N	N
	11	0	AUSTRALIA	ST	ST MARYS	NSW	2760	Y	N	N
3	11	0	AUSTRALIA	ST	ST MARYS	NSW	2760	Y	N	N
5	11	0	AUSTRALIA	ST	ST MARYS	NSW	2760	Y	N	N
1	11	0	AUSTRALIA	ST	ST MARYS	NSW	2760	Y	N	N
4	11	0	AUSTRALIA	ST	ST MARYS	NSW	2760	Y	N	N
	13	0	AUSTRALIA	ST	ST MARYS	NSW	2760	Y	N	N

Unit	Street Number (from)	Street Number (to)	Street Name	Street Type	Suburb	State	Post Code	Residential	Non-residential	Feedback received
3	13	0	AUSTRALIA	ST	ST MARYS	NSW	2760	Y	N	N
6	13	0	AUSTRALIA	ST	ST MARYS	NSW	2760	Y	N	N
9	13	0	AUSTRALIA	ST	ST MARYS	NSW	2760	Y	N	N
1	13	0	AUSTRALIA	ST	ST MARYS	NSW	2760	Y	N	N
7	13	0	AUSTRALIA	ST	ST MARYS	NSW	2760	Y	N	N
4	13	0	AUSTRALIA	ST	ST MARYS	NSW	2760	Y	N	N
5	13	0	AUSTRALIA	ST	ST MARYS	NSW	2760	Y	N	N
2	13	0	AUSTRALIA	ST	ST MARYS	NSW	2760	Y	N	N
8	13	0	AUSTRALIA	ST	ST MARYS	NSW	2760	Y	N	N
	15	0	AUSTRALIA	ST	ST MARYS	NSW	2760	Y	N	N
2	15	0	AUSTRALIA	ST	ST MARYS	NSW	2760	Y	N	N
4	15	0	AUSTRALIA	ST	ST MARYS	NSW	2760	Y	N	N
9	15	0	AUSTRALIA	ST	ST MARYS	NSW	2760	Y	N	N
3	15	0	AUSTRALIA	ST	ST MARYS	NSW	2760	Y	N	N
1	15	0	AUSTRALIA	ST	ST MARYS	NSW	2760	Y	N	N
10	15	0	AUSTRALIA	ST	ST MARYS	NSW	2760	Y	N	N
8	15	0	AUSTRALIA	ST	ST MARYS	NSW	2760	Y	N	N
6	15	0	AUSTRALIA	ST	ST MARYS	NSW	2760	Y	N	N
7	15	0	AUSTRALIA	ST	ST MARYS	NSW	2760	Y	N	N
5	15	0	AUSTRALIA	ST	ST MARYS	NSW	2760	Y	N	N
2	17	0	AUSTRALIA	ST	ST MARYS	NSW	2760	Y	N	N
11	17	0	AUSTRALIA	ST	ST MARYS	NSW	2760	Y	N	N
5	17	0	AUSTRALIA	ST	ST MARYS	NSW	2760	Y	N	N
8	17	0	AUSTRALIA	ST	ST MARYS	NSW	2760	Y	N	N
9	17	0	AUSTRALIA	ST	ST MARYS	NSW	2760	Y	N	N
	17	0	AUSTRALIA	ST	ST MARYS	NSW	2760	Y	N	N
3	17	0	AUSTRALIA	ST	ST MARYS	NSW	2760	Y	N	N
1	17	0	AUSTRALIA	ST	ST MARYS	NSW	2760	Y	N	N
4	17	0	AUSTRALIA	ST	ST MARYS	NSW	2760	Y	N	N
12	17	0	AUSTRALIA	ST	ST MARYS	NSW	2760	Y	N	N
10	17	0	AUSTRALIA	ST	ST MARYS	NSW	2760	Y	N	N
7	17	0	AUSTRALIA	ST	ST MARYS	NSW	2760	Y	N	N
6	17	0	AUSTRALIA	ST	ST MARYS	NSW	2760	Y	N	N
1	19	0	AUSTRALIA	ST	ST MARYS	NSW	2760	Y	N	N
2	19	0	AUSTRALIA	ST	ST MARYS	NSW	2760	Y	N	N
4	19	0	AUSTRALIA	ST	ST MARYS	NSW	2760	Y	N	N
	19	0	AUSTRALIA	ST	ST MARYS	NSW	2760	Y	N	N
5	19	0	AUSTRALIA	ST	ST MARYS	NSW	2760	Y	N	N

Unit	Street Number (from)	Street Number (to)	Street Name	Street Type	Suburb	State	Post Code	Residential	Non-residential	Feedback received
3	19	0	AUSTRALIA	ST	ST MARYS	NSW	2760	Y	N	N
	21	0	AUSTRALIA	ST	ST MARYS	NSW	2760	Y	N	N
3	21	0	AUSTRALIA	ST	ST MARYS	NSW	2760	Y	N	N
4	21	0	AUSTRALIA	ST	ST MARYS	NSW	2760	Y	N	N
6	21	0	AUSTRALIA	ST	ST MARYS	NSW	2760	Y	N	N
5	21	0	AUSTRALIA	ST	ST MARYS	NSW	2760	Y	N	N
2	21	0	AUSTRALIA	ST	ST MARYS	NSW	2760	Y	N	N
1	21	0	AUSTRALIA	ST	ST MARYS	NSW	2760	Y	N	N
	23	0	AUSTRALIA	ST	ST MARYS	NSW	2760	Y	N	N
	25	0	AUSTRALIA	ST	ST MARYS	NSW	2760	Y	N	N
	27	0	AUSTRALIA	ST	ST MARYS	NSW	2760	Y	N	N
	2	0	BELAR	ST	ST MARYS	NSW	2760	N	Y	N
	5	0	BLAIR	AVE	ST MARYS	NSW	2760	Y	N	N
2	6	10	BLAIR	AVE	ST MARYS	NSW	2760	Y	N	N
1	6	10	BLAIR	AVE	ST MARYS	NSW	2760	Y	N	N
11	6	10	BLAIR	AVE	ST MARYS	NSW	2760	Y	N	N
9	6	10	BLAIR	AVE	ST MARYS	NSW	2760	Y	N	N
5	6	10	BLAIR	AVE	ST MARYS	NSW	2760	Y	N	N
6	6	10	BLAIR	AVE	ST MARYS	NSW	2760	Y	N	N
7	6	10	BLAIR	AVE	ST MARYS	NSW	2760	Y	N	N
10	6	10	BLAIR	AVE	ST MARYS	NSW	2760	Y	N	N
4	6	10	BLAIR	AVE	ST MARYS	NSW	2760	Y	N	N
	6	10	BLAIR	AVE	ST MARYS	NSW	2760	Y	N	N
8	6	10	BLAIR	AVE	ST MARYS	NSW	2760	Y	N	N
12	6	10	BLAIR	AVE	ST MARYS	NSW	2760	Y	N	N
3	6	10	BLAIR	AVE	ST MARYS	NSW	2760	Y	N	N
	7	0	BLAIR	AVE	ST MARYS	NSW	2760	Y	N	N
	9	0	BLAIR	AVE	ST MARYS	NSW	2760	Y	N	N
	11	0	BLAIR	AVE	ST MARYS	NSW	2760	Y	N	N
	12	0	BLAIR	AVE	ST MARYS	NSW	2760	Y	N	N
	14	0	BLAIR	AVE	ST MARYS	NSW	2760	Y	N	N
	16	0	BLAIR	AVE	ST MARYS	NSW	2760	Y	N	N
	18	0	BLAIR	AVE	ST MARYS	NSW	2760	Y	N	N
	20	0	BLAIR	AVE	ST MARYS	NSW	2760	Y	N	N
	20	0	BLAIR	AVE	ST MARYS	NSW	2760	Y	N	N
	167	0	BRISBANE	ST	ST MARYS	NSW	2760	Y	N	N
	169	0	BRISBANE	ST	ST MARYS	NSW	2760	Y	N	N
	171	0	BRISBANE	ST	ST MARYS	NSW	2760	Y	N	N



Unit	Street Number (from)	Street Number (to)	Street Name	Street Type	Suburb	State	Post Code	Residential	Non-residential	Feedback received
	173	0	BRISBANE	ST	ST MARYS	NSW	2760	Y	N	N
	1	0	CAMIRA	ST	ST MARYS	NSW	2760	Y	N	N
	3	0	CAMIRA	ST	ST MARYS	NSW	2760	Y	N	N
	5	0	CAMIRA	ST	ST MARYS	NSW	2760	Y	N	N
	7	0	CAMIRA	ST	ST MARYS	NSW	2760	Y	N	N
	9	0	CAMIRA	ST	ST MARYS	NSW	2760	Y	N	N
	11	0	CAMIRA	ST	ST MARYS	NSW	2760	Y	N	N
	13	0	CAMIRA	ST	ST MARYS	NSW	2760	Y	N	N
	15	0	CAMIRA	ST	ST MARYS	NSW	2760	Y	N	N
	43	0	CARINYA	AVE	ST MARYS	NSW	2760	Y	N	N
	45	0	CARINYA	AVE	ST MARYS	NSW	2760	Y	N	N
	47	0	CARINYA	AVE	ST MARYS	NSW	2760	Y	N	N
	49	0	CARINYA	AVE	ST MARYS	NSW	2760	Y	N	N
	51	0	CARINYA	AVE	ST MARYS	NSW	2760	Y	N	N
	53	0	CARINYA	AVE	ST MARYS	NSW	2760	Y	N	N
	55	0	CARINYA	AVE	ST MARYS	NSW	2760	Y	N	N
	57	0	CARINYA	AVE	ST MARYS	NSW	2760	Y	N	N
	59	0	CARINYA	AVE	ST MARYS	NSW	2760	Y	N	N
	61	0	CARINYA	AVE	ST MARYS	NSW	2760	Y	N	N
	63	0	CARINYA	AVE	ST MARYS	NSW	2760	Y	N	N
	65	67	CARINYA	AVE	ST MARYS	NSW	2760	Y	N	N
	69	0	CARINYA	AVE	ST MARYS	NSW	2760	Y	N	N
	71	0	CARINYA	AVE	ST MARYS	NSW	2760	Y	N	N
	71	0	CARINYA	AVE	ST MARYS	NSW	2760	Y	N	N
	73	0	CARINYA	AVE	ST MARYS	NSW	2760	Y	N	N
	75	0	CARINYA	AVE	ST MARYS	NSW	2760	Y	N	N
	78	0	CARINYA	AVE	ST MARYS	NSW	2760	Y	N	N
	1	0	CHAMPNESS	CRES	ST MARYS	NSW	2760	Y	N	N
	1	0	CHAMPNESS	CRES	ST MARYS	NSW	2760	Y	N	N
	2	0	CHAMPNESS	CRES	ST MARYS	NSW	2760	Y	N	N
	3	0	CHAMPNESS	CRES	ST MARYS	NSW	2760	Y	N	N
	3	0	CHAMPNESS	CRES	ST MARYS	NSW	2760	Y	N	N
	3	0	CHAMPNESS	CRES	ST MARYS	NSW	2760	Y	N	N
	4	0	CHAMPNESS	CRES	ST MARYS	NSW	2760	Y	N	N
	5	0	CHAMPNESS	CRES	ST MARYS	NSW	2760	Y	N	N
	6	0	CHAMPNESS	CRES	ST MARYS	NSW	2760	Y	N	N
	7	0	CHAMPNESS	CRES	ST MARYS	NSW	2760	Y	N	N
	8	0	CHAMPNESS	CRES	ST MARYS	NSW	2760	Y	N	N

Unit	Street Number (from)	Street Number (to)	Street Name	Street Type	Suburb	State	Post Code	Residential	Non-residential	Feedback received
	9	0	CHAMPNESS	CRES	ST MARYS	NSW	2760	Y	N	N
	10	0	CHAMPNESS	CRES	ST MARYS	NSW	2760	Y	N	N
	11	0	CHAMPNESS	CRES	ST MARYS	NSW	2760	Y	N	N
	12	0	CHAMPNESS	CRES	ST MARYS	NSW	2760	Y	N	N
	13	0	CHAMPNESS	CRES	ST MARYS	NSW	2760	Y	N	N
	14	0	CHAMPNESS	CRES	ST MARYS	NSW	2760	Y	N	N
	15	0	CHAMPNESS	CRES	ST MARYS	NSW	2760	Y	N	N
1	16	0	CHAMPNESS	CRES	ST MARYS	NSW	2760	Y	N	N
	16	0	CHAMPNESS	CRES	ST MARYS	NSW	2760	Y	N	N
	17	0	CHAMPNESS	CRES	ST MARYS	NSW	2760	Y	N	N
1	18	20	CHAMPNESS	CRES	ST MARYS	NSW	2760	Y	N	N
	18	20	CHAMPNESS	CRES	ST MARYS	NSW	2760	Y	N	N
4	18	20	CHAMPNESS	CRES	ST MARYS	NSW	2760	Y	N	N
5	18	20	CHAMPNESS	CRES	ST MARYS	NSW	2760	Y	N	N
3	18	20	CHAMPNESS	CRES	ST MARYS	NSW	2760	Y	N	N
2	18	20	CHAMPNESS	CRES	ST MARYS	NSW	2760	Y	N	N
8	18	20	CHAMPNESS	CRES	ST MARYS	NSW	2760	Y	N	N
6	18	20	CHAMPNESS	CRES	ST MARYS	NSW	2760	Y	N	N
7	18	20	CHAMPNESS	CRES	ST MARYS	NSW	2760	Y	N	N
	1	0	CHESHAM	ST	ST MARYS	NSW	2760	Y	N	N
1	1	0	CHESHAM	ST	ST MARYS	NSW	2760	Y	N	N
2	1	0	CHESHAM	ST	ST MARYS	NSW	2760	Y	N	N
	2	0	CHESHAM	ST	ST MARYS	NSW	2760	Y	N	N
	2	0	CHESHAM	ST	ST MARYS	NSW	2760	Y	N	N
	2	0	CHESHAM	ST	ST MARYS	NSW	2760	Y	N	N
	3	0	CHESHAM	ST	ST MARYS	NSW	2760	Y	N	N
	3	0	CHESHAM	ST	ST MARYS	NSW	2760	Y	N	N
	3	0	CHESHAM	ST	ST MARYS	NSW	2760	Y	N	N
	4	0	CHESHAM	ST	ST MARYS	NSW	2760	Y	N	N
	5	0	CHESHAM	ST	ST MARYS	NSW	2760	Y	N	N
	6	0	CHESHAM	ST	ST MARYS	NSW	2760	Y	N	N
	7	0	CHESHAM	ST	ST MARYS	NSW	2760	Y	N	N
	8	0	CHESHAM	ST	ST MARYS	NSW	2760	Y	N	N
1	9	0	CHESHAM	ST	ST MARYS	NSW	2760	Y	N	N
2	9	0	CHESHAM	ST	ST MARYS	NSW	2760	Y	N	N
	9	0	CHESHAM	ST	ST MARYS	NSW	2760	Y	N	N
4	9	0	CHESHAM	ST	ST MARYS	NSW	2760	Y	N	N
3	9	0	CHESHAM	ST	ST MARYS	NSW	2760	Y	N	N

Unit	Street Number (from)	Street Number (to)	Street Name	Street Type	Suburb	State	Post Code	Residential	Non-residential	Feedback received
	10	0	CHESHAM	ST	ST MARYS	NSW	2760	Y	N	N
	10	0	CHESHAM	ST	ST MARYS	NSW	2760	Y	N	N
	11	0	CHESHAM	ST	ST MARYS	NSW	2760	Y	N	N
	11	0	CHESHAM	ST	ST MARYS	NSW	2760	Y	N	N
	10	38	FORRESTER	RD	ST MARYS	NSW	2760	N	Y	N
	59	61	FORRESTER	RD	ST MARYS	NSW	2760	N	Y	N
2	65	67	FORRESTER	RD	ST MARYS	NSW	2760	N	Y	N
3	65	67	FORRESTER	RD	ST MARYS	NSW	2760	N	Y	N
1	65	67	FORRESTER	RD	ST MARYS	NSW	2760	N	Y	N
4	65	67	FORRESTER	RD	ST MARYS	NSW	2760	N	Y	N
6	65	67	FORRESTER	RD	ST MARYS	NSW	2760	N	Y	N
5	65	67	FORRESTER	RD	ST MARYS	NSW	2760	N	Y	N
7	65	67	FORRESTER	RD	ST MARYS	NSW	2760	N	Y	N
8	65	67	FORRESTER	RD	ST MARYS	NSW	2760	N	Y	N
	4	0	GIDLEY	ST	ST MARYS	NSW	2760	Y	N	N
	10	0	GIDLEY	ST	ST MARYS	NSW	2760	Y	N	N
	12	0	GIDLEY	ST	ST MARYS	NSW	2760	Y	N	N
	14	0	GIDLEY	ST	ST MARYS	NSW	2760	Y	N	N
	16	0	GIDLEY	ST	ST MARYS	NSW	2760	Y	N	N
	16	0	GIDLEY	ST	ST MARYS	NSW	2760	Y	N	N
1	84	0	GLOSSOP	ST	NORTH ST MARYS	NSW	2760	Y	N	N
2	84	0	GLOSSOP	ST	NORTH ST MARYS	NSW	2760	Y	N	N
A	84	0	GLOSSOP	ST	NORTH ST MARYS	NSW	2760	Y	N	N
	84	0	GLOSSOP	ST	NORTH ST MARYS	NSW	2760	Y	N	N
3	86	0	GLOSSOP	ST	NORTH ST MARYS	NSW	2760	Y	N	N
1	86	0	GLOSSOP	ST	NORTH ST MARYS	NSW	2760	Y	N	N
	86	0	GLOSSOP	ST	NORTH ST MARYS	NSW	2760	Y	N	N
	88	0	GLOSSOP	ST	ST MARYS	NSW	2760	Y	N	N
	88	0	GLOSSOP	ST	NORTH ST MARYS	NSW	2760	Y	N	N
	90	0	GLOSSOP	ST	NORTH ST MARYS	NSW	2760	Y	N	N
	91	0	GLOSSOP	ST	NORTH ST MARYS	NSW	2760	N	Y	N
	92	0	GLOSSOP	ST	NORTH ST MARYS	NSW	2760	Y	N	N
3	94	0	GLOSSOP	ST	NORTH ST MARYS	NSW	2760	N	Y	N
2	94	0	GLOSSOP	ST	NORTH ST MARYS	NSW	2760	N	Y	N
4	94	0	GLOSSOP	ST	NORTH ST MARYS	NSW	2760	N	Y	N
1	94	0	GLOSSOP	ST	NORTH ST MARYS	NSW	2760	N	Y	N
	94	0	GLOSSOP	ST	NORTH ST MARYS	NSW	2760	Y	N	N
	96	0	GLOSSOP	ST	ST MARYS	NSW	2760	Y	N	N

Unit	Street Number (from)	Street Number (to)	Street Name	Street Type	Suburb	State	Post Code	Residential	Non-residential	Feedback received
	97	0	GLOSSOP	ST	NORTH ST MARYS	NSW	2760	N	Y	N
	98	0	GLOSSOP	ST	ST MARYS	NSW	2760	Y	N	N
	100	0	GLOSSOP	ST	ST MARYS	NSW	2760	Y	N	N
2	102	0	GLOSSOP	ST	ST MARYS	NSW	2760	Y	N	N
	102	0	GLOSSOP	ST	ST MARYS	NSW	2760	Y	N	N
1	102	0	GLOSSOP	ST	ST MARYS	NSW	2760	Y	N	N
1	102	0	GLOSSOP	ST	ST MARYS	NSW	2760	Y	N	N
	102	0	GLOSSOP	ST	ST MARYS	NSW	2760	Y	N	N
2	102	0	GLOSSOP	ST	ST MARYS	NSW	2760	Y	N	N
	104	0	GLOSSOP	ST	ST MARYS	NSW	2760	Y	N	N
	106	0	GLOSSOP	ST	ST MARYS	NSW	2760	Y	N	N
	109	0	GLOSSOP	ST	ST MARYS	NSW	2760	Y	N	N
	110	0	GLOSSOP	ST	ST MARYS	NSW	2760	Y	N	N
9	110	0	GLOSSOP	ST	ST MARYS	NSW	2760	Y	N	N
	110	0	GLOSSOP	ST	ST MARYS	NSW	2760	Y	N	N
10	110	0	GLOSSOP	ST	ST MARYS	NSW	2760	Y	N	N
1	111	0	GLOSSOP	ST	ST MARYS	NSW	2760	Y	N	N
7	111	0	GLOSSOP	ST	ST MARYS	NSW	2760	Y	N	N
3	111	0	GLOSSOP	ST	ST MARYS	NSW	2760	Y	N	N
5	111	0	GLOSSOP	ST	ST MARYS	NSW	2760	Y	N	N
	111	0	GLOSSOP	ST	ST MARYS	NSW	2760	Y	N	N
2	111	0	GLOSSOP	ST	ST MARYS	NSW	2760	Y	N	N
6	111	0	GLOSSOP	ST	ST MARYS	NSW	2760	Y	N	N
4	111	0	GLOSSOP	ST	ST MARYS	NSW	2760	Y	N	N
1	112	0	GLOSSOP	ST	ST MARYS	NSW	2760	Y	N	N
2	112	0	GLOSSOP	ST	ST MARYS	NSW	2760	Y	N	N
	112	0	GLOSSOP	ST	ST MARYS	NSW	2760	Y	N	N
	113	0	GLOSSOP	ST	ST MARYS	NSW	2760	Y	N	N
	114	0	GLOSSOP	ST	ST MARYS	NSW	2760	Y	N	N
	115	0	GLOSSOP	ST	ST MARYS	NSW	2760	Y	N	N
	116	0	GLOSSOP	ST	ST MARYS	NSW	2760	Y	N	N
	117	0	GLOSSOP	ST	ST MARYS	NSW	2760	Y	N	N
	118	0	GLOSSOP	ST	ST MARYS	NSW	2760	Y	N	N
10	119	121	GLOSSOP	ST	ST MARYS	NSW	2760	Y	N	N
7	119	121	GLOSSOP	ST	ST MARYS	NSW	2760	Y	N	N
9	119	121	GLOSSOP	ST	ST MARYS	NSW	2760	Y	N	N
1	119	121	GLOSSOP	ST	ST MARYS	NSW	2760	Y	N	N
12	119	121	GLOSSOP	ST	ST MARYS	NSW	2760	Y	N	N

Unit	Street Number (from)	Street Number (to)	Street Name	Street Type	Suburb	State	Post Code	Residential	Non-residential	Feedback received
8	119	121	GLOSSOP	ST	ST MARYS	NSW	2760	Y	N	N
4	119	121	GLOSSOP	ST	ST MARYS	NSW	2760	Y	N	N
5	119	121	GLOSSOP	ST	ST MARYS	NSW	2760	Y	N	N
11	119	121	GLOSSOP	ST	ST MARYS	NSW	2760	Y	N	N
2	119	121	GLOSSOP	ST	ST MARYS	NSW	2760	Y	N	N
	119	121	GLOSSOP	ST	ST MARYS	NSW	2760	Y	N	N
6	119	121	GLOSSOP	ST	ST MARYS	NSW	2760	Y	N	N
3	119	121	GLOSSOP	ST	ST MARYS	NSW	2760	Y	N	N
	120	0	GLOSSOP	ST	ST MARYS	NSW	2760	Y	N	N
	1	0	HARRIS	ST	NORTH ST MARYS	NSW	2760	N	Y	N
	10	0	HARRIS	ST	NORTH ST MARYS	NSW	2760	N	Y	N
	12	0	HARRIS	ST	NORTH ST MARYS	NSW	2760	N	Y	N
	14	22	HARRIS	ST	NORTH ST MARYS	NSW	2760	N	Y	N
	17	0	HARRIS	ST	NORTH ST MARYS	NSW	2760	N	Y	N
1	17	0	HARRIS	ST	NORTH ST MARYS	NSW	2760	N	Y	N
1	19	0	HARRIS	ST	NORTH ST MARYS	NSW	2760	N	Y	N
2	19	0	HARRIS	ST	NORTH ST MARYS	NSW	2760	N	Y	N
	19	0	HARRIS	ST	NORTH ST MARYS	NSW	2760	Y	N	N
3	19	0	HARRIS	ST	NORTH ST MARYS	NSW	2760	N	Y	N
	24	28	HARRIS	ST	NORTH ST MARYS	NSW	2760	N	Y	N
	25	0	HARRIS	ST	NORTH ST MARYS	NSW	2760	N	Y	N
	39	0	HARRIS	ST	NORTH ST MARYS	NSW	2760	N	Y	N
	41	0	HARRIS	ST	NORTH ST MARYS	NSW	2760	N	Y	N
3	41	0	HARRIS	ST	NORTH ST MARYS	NSW	2760	N	Y	N
2	41	0	HARRIS	ST	NORTH ST MARYS	NSW	2760	N	Y	N
1	41	0	HARRIS	ST	NORTH ST MARYS	NSW	2760	N	Y	N
4	45	0	HARRIS	ST	NORTH ST MARYS	NSW	2760	N	Y	N
2	45	0	HARRIS	ST	NORTH ST MARYS	NSW	2760	N	Y	N
	45	0	HARRIS	ST	NORTH ST MARYS	NSW	2760	Y	N	N
1	45	0	HARRIS	ST	NORTH ST MARYS	NSW	2760	N	Y	N
3	45	0	HARRIS	ST	NORTH ST MARYS	NSW	2760	N	Y	N
7	73	0	HOBART	ST	ST MARYS	NSW	2760	Y	N	N
5	73	0	HOBART	ST	ST MARYS	NSW	2760	Y	N	N
8	73	0	HOBART	ST	ST MARYS	NSW	2760	Y	N	N
2	73	0	HOBART	ST	ST MARYS	NSW	2760	Y	N	N
1	73	0	HOBART	ST	ST MARYS	NSW	2760	Y	N	N
	73	0	HOBART	ST	ST MARYS	NSW	2760	Y	N	N
3	73	0	HOBART	ST	ST MARYS	NSW	2760	Y	N	N

Unit	Street Number (from)	Street Number (to)	Street Name	Street Type	Suburb	State	Post Code	Residential	Non-residential	Feedback received
9	73	0	HOBART	ST	ST MARYS	NSW	2760	Y	N	N
6	73	0	HOBART	ST	ST MARYS	NSW	2760	Y	N	N
4	73	0	HOBART	ST	ST MARYS	NSW	2760	Y	N	N
	75	0	HOBART	ST	ST MARYS	NSW	2760	Y	N	N
	76	0	HOBART	ST	ST MARYS	NSW	2760	Y	N	N
	82	0	HOBART	ST	ST MARYS	NSW	2760	Y	N	N
	83	0	HOBART	ST	ST MARYS	NSW	2760	Y	N	N
	37	0	KALANG	AVE	ST MARYS	NSW	2760	Y	N	N
	39	0	KALANG	AVE	ST MARYS	NSW	2760	Y	N	N
	41	0	KALANG	AVE	ST MARYS	NSW	2760	Y	N	N
	43	0	KALANG	AVE	ST MARYS	NSW	2760	Y	N	N
	47	0	KALANG	AVE	ST MARYS	NSW	2760	Y	N	N
	49	0	KALANG	AVE	ST MARYS	NSW	2760	Y	N	N
	5	0	LETHBRIDGE	ST	ST MARYS	NSW	2760	Y	N	N
	7	0	LETHBRIDGE	ST	ST MARYS	NSW	2760	Y	N	N
	9	0	LETHBRIDGE	ST	ST MARYS	NSW	2760	Y	N	N
	11	0	LETHBRIDGE	ST	ST MARYS	NSW	2760	Y	N	N
	12	0	LETHBRIDGE	ST	ST MARYS	NSW	2760	Y	N	N
3	13	17	LETHBRIDGE	ST	ST MARYS	NSW	2760	Y	N	N
2	13	17	LETHBRIDGE	ST	ST MARYS	NSW	2760	Y	N	N
	13	17	LETHBRIDGE	ST	ST MARYS	NSW	2760	Y	N	N
8	13	17	LETHBRIDGE	ST	ST MARYS	NSW	2760	Y	N	N
7	13	17	LETHBRIDGE	ST	ST MARYS	NSW	2760	Y	N	N
9	13	17	LETHBRIDGE	ST	ST MARYS	NSW	2760	Y	N	N
4	13	17	LETHBRIDGE	ST	ST MARYS	NSW	2760	Y	N	N
1	13	17	LETHBRIDGE	ST	ST MARYS	NSW	2760	Y	N	N
5	13	17	LETHBRIDGE	ST	ST MARYS	NSW	2760	Y	N	N
10	13	17	LETHBRIDGE	ST	ST MARYS	NSW	2760	Y	N	N
6	13	17	LETHBRIDGE	ST	ST MARYS	NSW	2760	Y	N	N
	14	0	LETHBRIDGE	ST	ST MARYS	NSW	2760	Y	N	N
	16	0	LETHBRIDGE	ST	ST MARYS	NSW	2760	Y	N	N
2	18	0	LETHBRIDGE	ST	ST MARYS	NSW	2760	Y	N	N
4	18	0	LETHBRIDGE	ST	ST MARYS	NSW	2760	Y	N	N
3	18	0	LETHBRIDGE	ST	ST MARYS	NSW	2760	Y	N	N
	18	0	LETHBRIDGE	ST	ST MARYS	NSW	2760	Y	N	N
1	18	0	LETHBRIDGE	ST	ST MARYS	NSW	2760	Y	N	N
	19	0	LETHBRIDGE	ST	ST MARYS	NSW	2760	Y	N	N
	21	0	LETHBRIDGE	ST	ST MARYS	NSW	2760	Y	N	N

Unit	Street Number (from)	Street Number (to)	Street Name	Street Type	Suburb	State	Post Code	Residential	Non-residential	Feedback received
	24	0	LETHBRIDGE	ST	ST MARYS	NSW	2760	Y	N	N
	2	0	MERINDA	ST	ST MARYS	NSW	2760	Y	N	N
	4	0	MERINDA	ST	ST MARYS	NSW	2760	Y	N	N
	6	0	MERINDA	ST	ST MARYS	NSW	2760	Y	N	N
	8	0	MERINDA	ST	ST MARYS	NSW	2760	Y	N	N
	10	0	MERINDA	ST	ST MARYS	NSW	2760	Y	N	N
	12	0	MERINDA	ST	ST MARYS	NSW	2760	Y	N	N
	14	0	MERINDA	ST	ST MARYS	NSW	2760	Y	N	N
	16	0	MERINDA	ST	ST MARYS	NSW	2760	Y	N	N
	2	0	NARIEL	ST	ST MARYS	NSW	2760	Y	N	N
1	2	0	NARIEL	ST	ST MARYS	NSW	2760	Y	N	N
2	2	0	NARIEL	ST	ST MARYS	NSW	2760	Y	N	N
1	3	0	NARIEL	ST	ST MARYS	NSW	2760	Y	N	N
6	3	0	NARIEL	ST	ST MARYS	NSW	2760	Y	N	N
7	3	0	NARIEL	ST	ST MARYS	NSW	2760	Y	N	N
2	3	0	NARIEL	ST	ST MARYS	NSW	2760	Y	N	N
12	3	0	NARIEL	ST	ST MARYS	NSW	2760	Y	N	N
11	3	0	NARIEL	ST	ST MARYS	NSW	2760	Y	N	N
3	3	0	NARIEL	ST	ST MARYS	NSW	2760	Y	N	N
9	3	0	NARIEL	ST	ST MARYS	NSW	2760	Y	N	N
4	3	0	NARIEL	ST	ST MARYS	NSW	2760	Y	N	N
10	3	0	NARIEL	ST	ST MARYS	NSW	2760	Y	N	N
5	3	0	NARIEL	ST	ST MARYS	NSW	2760	Y	N	N
	3	0	NARIEL	ST	ST MARYS	NSW	2760	Y	N	N
15	3	0	NARIEL	ST	ST MARYS	NSW	2760	Y	N	N
8	3	0	NARIEL	ST	ST MARYS	NSW	2760	Y	N	N
13	3	0	NARIEL	ST	ST MARYS	NSW	2760	Y	N	N
14	3	0	NARIEL	ST	ST MARYS	NSW	2760	Y	N	N
	4	0	NARIEL	ST	ST MARYS	NSW	2760	Y	N	N
	5	0	NARIEL	ST	ST MARYS	NSW	2760	Y	N	N
	6	0	NARIEL	ST	ST MARYS	NSW	2760	Y	N	N
	7	0	NARIEL	ST	ST MARYS	NSW	2760	Y	N	N
	8	0	NARIEL	ST	ST MARYS	NSW	2760	Y	N	N
	9	0	NARIEL	ST	ST MARYS	NSW	2760	Y	N	N
	10	0	NARIEL	ST	ST MARYS	NSW	2760	Y	N	N
	11	0	NARIEL	ST	ST MARYS	NSW	2760	Y	N	N
	12	0	NARIEL	ST	ST MARYS	NSW	2760	Y	N	N
	13	0	NARIEL	ST	ST MARYS	NSW	2760	Y	N	N

Unit	Street Number (from)	Street Number (to)	Street Name	Street Type	Suburb	State	Post Code	Residential	Non-residential	Feedback received
	14	0	NARIEL	ST	ST MARYS	NSW	2760	Y	N	N
	15	0	NARIEL	ST	ST MARYS	NSW	2760	Y	N	N
	16	0	NARIEL	ST	ST MARYS	NSW	2760	Y	N	N
	25	0	NARIEL	ST	ST MARYS	NSW	2760	N	Y	N
	25	0	NARIEL	ST	ST MARYS	NSW	2760	N	Y	N
	25	0	NARIEL	ST	ST MARYS	NSW	2760	N	Y	N
	1	0	PHILLIP	ST	ST MARYS	NSW	2760	Y	N	N
	2	0	PHILLIP	ST	ST MARYS	NSW	2760	Y	N	N
	3	0	PHILLIP	ST	ST MARYS	NSW	2760	Y	N	N
	4	0	PHILLIP	ST	ST MARYS	NSW	2760	Y	N	N
	5	0	PHILLIP	ST	ST MARYS	NSW	2760	Y	N	N
	6	0	PHILLIP	ST	ST MARYS	NSW	2760	Y	N	N
	7	0	PHILLIP	ST	ST MARYS	NSW	2760	Y	N	N
	8	0	PHILLIP	ST	ST MARYS	NSW	2760	Y	N	N
	9	0	PHILLIP	ST	ST MARYS	NSW	2760	Y	N	N
	10	0	PHILLIP	ST	ST MARYS	NSW	2760	Y	N	N
10	11	0	PHILLIP	ST	ST MARYS	NSW	2760	Y	N	N
20	11	0	PHILLIP	ST	ST MARYS	NSW	2760	Y	N	N
3	11	0	PHILLIP	ST	ST MARYS	NSW	2760	Y	N	N
18	11	0	PHILLIP	ST	ST MARYS	NSW	2760	Y	N	N
9	11	0	PHILLIP	ST	ST MARYS	NSW	2760	Y	N	N
19	11	0	PHILLIP	ST	ST MARYS	NSW	2760	Y	N	N
35	11	0	PHILLIP	ST	ST MARYS	NSW	2760	Y	N	N
37	11	0	PHILLIP	ST	ST MARYS	NSW	2760	Y	N	N
31	11	0	PHILLIP	ST	ST MARYS	NSW	2760	Y	N	N
43	11	0	PHILLIP	ST	ST MARYS	NSW	2760	Y	N	N
14	11	0	PHILLIP	ST	ST MARYS	NSW	2760	Y	N	N
48	11	0	PHILLIP	ST	ST MARYS	NSW	2760	Y	N	N
	11	0	PHILLIP	ST	ST MARYS	NSW	2760	Y	N	N
13	11	0	PHILLIP	ST	ST MARYS	NSW	2760	Y	N	N
39	11	0	PHILLIP	ST	ST MARYS	NSW	2760	Y	N	N
45	11	0	PHILLIP	ST	ST MARYS	NSW	2760	Y	N	N
40	11	0	PHILLIP	ST	ST MARYS	NSW	2760	Y	N	N
22	11	0	PHILLIP	ST	ST MARYS	NSW	2760	Y	N	N
15	11	0	PHILLIP	ST	ST MARYS	NSW	2760	Y	N	N
30	11	0	PHILLIP	ST	ST MARYS	NSW	2760	Y	N	N
16	11	0	PHILLIP	ST	ST MARYS	NSW	2760	Y	N	N
38	11	0	PHILLIP	ST	ST MARYS	NSW	2760	Y	N	N



Unit	Street Number (from)	Street Number (to)	Street Name	Street Type	Suburb	State	Post Code	Residential	Non-residential	Feedback received
34	11	0	PHILLIP	ST	ST MARYS	NSW	2760	Y	N	N
12	11	0	PHILLIP	ST	ST MARYS	NSW	2760	Y	N	N
36	11	0	PHILLIP	ST	ST MARYS	NSW	2760	Y	N	N
11	11	0	PHILLIP	ST	ST MARYS	NSW	2760	Y	N	N
2	11	0	PHILLIP	ST	ST MARYS	NSW	2760	Y	N	N
23	11	0	PHILLIP	ST	ST MARYS	NSW	2760	Y	N	N
4	11	0	PHILLIP	ST	ST MARYS	NSW	2760	Y	N	N
49	11	0	PHILLIP	ST	ST MARYS	NSW	2760	Y	N	N
24	11	0	PHILLIP	ST	ST MARYS	NSW	2760	Y	N	N
44	11	0	PHILLIP	ST	ST MARYS	NSW	2760	Y	N	N
47	11	0	PHILLIP	ST	ST MARYS	NSW	2760	Y	N	N
6	11	0	PHILLIP	ST	ST MARYS	NSW	2760	Y	N	N
28	11	0	PHILLIP	ST	ST MARYS	NSW	2760	Y	N	N
27	11	0	PHILLIP	ST	ST MARYS	NSW	2760	Y	N	N
8	11	0	PHILLIP	ST	ST MARYS	NSW	2760	Y	N	N
32	11	0	PHILLIP	ST	ST MARYS	NSW	2760	Y	N	N
41	11	0	PHILLIP	ST	ST MARYS	NSW	2760	Y	N	N
21	11	0	PHILLIP	ST	ST MARYS	NSW	2760	Y	N	N
1	11	0	PHILLIP	ST	ST MARYS	NSW	2760	Y	N	N
29	11	0	PHILLIP	ST	ST MARYS	NSW	2760	Y	N	N
42	11	0	PHILLIP	ST	ST MARYS	NSW	2760	Y	N	N
26	11	0	PHILLIP	ST	ST MARYS	NSW	2760	Y	N	N
5	11	0	PHILLIP	ST	ST MARYS	NSW	2760	Y	N	N
33	11	0	PHILLIP	ST	ST MARYS	NSW	2760	Y	N	N
7	11	0	PHILLIP	ST	ST MARYS	NSW	2760	Y	N	N
46	11	0	PHILLIP	ST	ST MARYS	NSW	2760	Y	N	N
17	11	0	PHILLIP	ST	ST MARYS	NSW	2760	Y	N	N
25	11	0	PHILLIP	ST	ST MARYS	NSW	2760	Y	N	N
	12	0	PHILLIP	ST	ST MARYS	NSW	2760	Y	N	N
	13	0	PHILLIP	ST	ST MARYS	NSW	2760	Y	N	N
	14	0	PHILLIP	ST	ST MARYS	NSW	2760	Y	N	N
	16	0	PHILLIP	ST	ST MARYS	NSW	2760	Y	N	N
	17	0	PHILLIP	ST	ST MARYS	NSW	2760	Y	N	N
	18	0	PHILLIP	ST	ST MARYS	NSW	2760	Y	N	N
	19	0	PHILLIP	ST	ST MARYS	NSW	2760	Y	N	N
	21	0	PHILLIP	ST	ST MARYS	NSW	2760	Y	N	N
	23	0	PHILLIP	ST	ST MARYS	NSW	2760	Y	N	N
	24	0	PHILLIP	ST	ST MARYS	NSW	2760	Y	N	N

Unit	Street Number (from)	Street Number (to)	Street Name	Street Type	Suburb	State	Post Code	Residential	Non-residential	Feedback received
	25	0	PHILLIP	ST	ST MARYS	NSW	2760	Y	N	N
	26	0	PHILLIP	ST	ST MARYS	NSW	2760	Y	N	N
	27	0	PHILLIP	ST	ST MARYS	NSW	2760	Y	N	N
	28	0	PHILLIP	ST	ST MARYS	NSW	2760	Y	N	N
	29	0	PHILLIP	ST	ST MARYS	NSW	2760	Y	N	N
	30	0	PHILLIP	ST	ST MARYS	NSW	2760	Y	N	N
2	31	0	PHILLIP	ST	ST MARYS	NSW	2760	Y	N	N
5	31	0	PHILLIP	ST	ST MARYS	NSW	2760	Y	N	N
	31	0	PHILLIP	ST	ST MARYS	NSW	2760	Y	N	N
6	31	0	PHILLIP	ST	ST MARYS	NSW	2760	Y	N	N
4	31	0	PHILLIP	ST	ST MARYS	NSW	2760	Y	N	N
3	31	0	PHILLIP	ST	ST MARYS	NSW	2760	Y	N	N
1	31	0	PHILLIP	ST	ST MARYS	NSW	2760	Y	N	N
	32	0	PHILLIP	ST	ST MARYS	NSW	2760	Y	N	N
10	33	39	PHILLIP	ST	ST MARYS	NSW	2760	N	Y	N
4	33	39	PHILLIP	ST	ST MARYS	NSW	2760	N	Y	N
17	33	39	PHILLIP	ST	ST MARYS	NSW	2760	N	Y	N
1	33	39	PHILLIP	ST	ST MARYS	NSW	2760	N	Y	N
12	33	39	PHILLIP	ST	ST MARYS	NSW	2760	N	Y	N
18	33	39	PHILLIP	ST	ST MARYS	NSW	2760	N	Y	N
2	33	39	PHILLIP	ST	ST MARYS	NSW	2760	N	Y	N
14	33	39	PHILLIP	ST	ST MARYS	NSW	2760	N	Y	N
9	33	39	PHILLIP	ST	ST MARYS	NSW	2760	N	Y	N
15	33	39	PHILLIP	ST	ST MARYS	NSW	2760	N	Y	N
5	33	39	PHILLIP	ST	ST MARYS	NSW	2760	N	Y	N
12A	33	39	PHILLIP	ST	ST MARYS	NSW	2760	N	Y	N
	33	39	PHILLIP	ST	ST MARYS	NSW	2760	N	Y	N
16	33	39	PHILLIP	ST	ST MARYS	NSW	2760	N	Y	N
7	33	39	PHILLIP	ST	ST MARYS	NSW	2760	N	Y	N
3	33	39	PHILLIP	ST	ST MARYS	NSW	2760	N	Y	N
6	33	39	PHILLIP	ST	ST MARYS	NSW	2760	N	Y	N
13	33	39	PHILLIP	ST	ST MARYS	NSW	2760	N	Y	N
8	33	39	PHILLIP	ST	ST MARYS	NSW	2760	N	Y	N
8A	33	39	PHILLIP	ST	ST MARYS	NSW	2760	N	Y	N
1B	34	36	PHILLIP	ST	ST MARYS	NSW	2760	Y	N	N
5C	34	36	PHILLIP	ST	ST MARYS	NSW	2760	Y	N	N
3B	34	36	PHILLIP	ST	ST MARYS	NSW	2760	Y	N	N
3A	34	36	PHILLIP	ST	ST MARYS	NSW	2760	Y	N	N

Unit	Street Number (from)	Street Number (to)	Street Name	Street Type	Suburb	State	Post Code	Residential	Non-residential	Feedback received
3C	34	36	PHILLIP	ST	ST MARYS	NSW	2760	Y	N	N
2B	34	36	PHILLIP	ST	ST MARYS	NSW	2760	Y	N	N
2C	34	36	PHILLIP	ST	ST MARYS	NSW	2760	Y	N	N
4C	34	36	PHILLIP	ST	ST MARYS	NSW	2760	Y	N	N
	34	36	PHILLIP	ST	ST MARYS	NSW	2760	Y	N	N
2A	34	36	PHILLIP	ST	ST MARYS	NSW	2760	Y	N	N
6A	34	36	PHILLIP	ST	ST MARYS	NSW	2760	Y	N	N
1C	34	36	PHILLIP	ST	ST MARYS	NSW	2760	Y	N	N
4A	34	36	PHILLIP	ST	ST MARYS	NSW	2760	Y	N	N
1A	34	36	PHILLIP	ST	ST MARYS	NSW	2760	Y	N	N
5A	34	36	PHILLIP	ST	ST MARYS	NSW	2760	Y	N	N
6C	34	36	PHILLIP	ST	ST MARYS	NSW	2760	Y	N	N
4B	34	36	PHILLIP	ST	ST MARYS	NSW	2760	Y	N	N
6B	34	36	PHILLIP	ST	ST MARYS	NSW	2760	Y	N	N
5B	34	36	PHILLIP	ST	ST MARYS	NSW	2760	Y	N	N
2	40	0	PHILLIP	ST	ST MARYS	NSW	2760	N	Y	N
13	40	0	PHILLIP	ST	ST MARYS	NSW	2760	N	Y	N
8B	40	0	PHILLIP	ST	ST MARYS	NSW	2760	N	Y	N
7	40	0	PHILLIP	ST	ST MARYS	NSW	2760	N	Y	N
11	40	0	PHILLIP	ST	ST MARYS	NSW	2760	N	Y	N
1	40	0	PHILLIP	ST	ST MARYS	NSW	2760	N	Y	N
6	40	0	PHILLIP	ST	ST MARYS	NSW	2760	N	Y	N
9	40	0	PHILLIP	ST	ST MARYS	NSW	2760	N	Y	N
5	40	0	PHILLIP	ST	ST MARYS	NSW	2760	N	Y	N
3	40	0	PHILLIP	ST	ST MARYS	NSW	2760	N	Y	N
	40	0	PHILLIP	ST	ST MARYS	NSW	2760	N	Y	N
10	40	0	PHILLIP	ST	ST MARYS	NSW	2760	N	Y	N
15	40	0	PHILLIP	ST	ST MARYS	NSW	2760	N	Y	N
18	40	0	PHILLIP	ST	ST MARYS	NSW	2760	N	Y	N
12	40	0	PHILLIP	ST	ST MARYS	NSW	2760	N	Y	N
4	40	0	PHILLIP	ST	ST MARYS	NSW	2760	N	Y	N
17	40	0	PHILLIP	ST	ST MARYS	NSW	2760	N	Y	N
12A	40	0	PHILLIP	ST	ST MARYS	NSW	2760	N	Y	N
16	40	0	PHILLIP	ST	ST MARYS	NSW	2760	N	Y	N
14	40	0	PHILLIP	ST	ST MARYS	NSW	2760	N	Y	N
	47	49	PHILLIP	ST	ST MARYS	NSW	2760	N	Y	N
	51	0	PHILLIP	ST	ST MARYS	NSW	2760	N	Y	N
	51	0	PHILLIP	ST	ST MARYS	NSW	2760	Y	N	N

Unit	Street Number (from)	Street Number (to)	Street Name	Street Type	Suburb	State	Post Code	Residential	Non-residential	Feedback received
1	51	0	PHILLIP	ST	ST MARYS	NSW	2760	N	Y	N
2	51	0	PHILLIP	ST	ST MARYS	NSW	2760	N	Y	N
	53	0	PHILLIP	ST	ST MARYS	NSW	2760	N	Y	N
	25	27	PLASSER	CRES	NORTH ST MARYS	NSW	2760	N	Y	N
	29	31	PLASSER	CRES	NORTH ST MARYS	NSW	2760	N	Y	N
	33	37	PLASSER	CRES	NORTH ST MARYS	NSW	2760	Y	N	N
	34	36	PLASSER	CRES	NORTH ST MARYS	NSW	2760	Y	N	N
1	34	36	PLASSER	CRES	NORTH ST MARYS	NSW	2760	N	Y	N
2	34	36	PLASSER	CRES	NORTH ST MARYS	NSW	2760	N	Y	N
6	38	40	PLASSER	CRES	NORTH ST MARYS	NSW	2760	N	Y	N
1	38	40	PLASSER	CRES	NORTH ST MARYS	NSW	2760	N	Y	N
5	38	40	PLASSER	CRES	NORTH ST MARYS	NSW	2760	N	Y	N
4	38	40	PLASSER	CRES	NORTH ST MARYS	NSW	2760	N	Y	N
2	38	40	PLASSER	CRES	NORTH ST MARYS	NSW	2760	N	Y	N
3	38	40	PLASSER	CRES	NORTH ST MARYS	NSW	2760	N	Y	N
	38	40	PLASSER	CRES	NORTH ST MARYS	NSW	2760	N	Y	N
	42	44	PLASSER	CRES	NORTH ST MARYS	NSW	2760	N	Y	N
	48	0	PLASSER	CRES	NORTH ST MARYS	NSW	2760	N	Y	N
6	50	52	PLASSER	CRES	NORTH ST MARYS	NSW	2760	N	Y	N
3	50	52	PLASSER	CRES	NORTH ST MARYS	NSW	2760	N	Y	N
1	50	52	PLASSER	CRES	NORTH ST MARYS	NSW	2760	N	Y	N
	50	52	PLASSER	CRES	NORTH ST MARYS	NSW	2760	Y	N	N
2	50	52	PLASSER	CRES	NORTH ST MARYS	NSW	2760	N	Y	N
4	50	52	PLASSER	CRES	NORTH ST MARYS	NSW	2760	N	Y	N
5	50	52	PLASSER	CRES	NORTH ST MARYS	NSW	2760	N	Y	N
	54	0	PLASSER	CRES	NORTH ST MARYS	NSW	2760	N	Y	N
	56	0	PLASSER	CRES	NORTH ST MARYS	NSW	2760	N	Y	N
	58	60	PLASSER	CRES	NORTH ST MARYS	NSW	2760	N	Y	N
	1	0	QUEEN	ST	ST MARYS	NSW	2760	N	Y	N
	2	4	QUEEN	ST	ST MARYS	NSW	2760	N	Y	N
	3	0	QUEEN	ST	ST MARYS	NSW	2760	N	Y	N
	5	0	QUEEN	ST	ST MARYS	NSW	2760	N	Y	N
	6	0	QUEEN	ST	ST MARYS	NSW	2760	N	Y	N
	7	0	QUEEN	ST	ST MARYS	NSW	2760	N	Y	N
	8	0	QUEEN	ST	ST MARYS	NSW	2760	N	Y	N
	9	11	QUEEN	ST	ST MARYS	NSW	2760	N	Y	N
	10	0	QUEEN	ST	ST MARYS	NSW	2760	N	Y	N
	12	0	QUEEN	ST	ST MARYS	NSW	2760	N	Y	N

Unit	Street Number (from)	Street Number (to)	Street Name	Street Type	Suburb	State	Post Code	Residential	Non-residential	Feedback received
	13	0	QUEEN	ST	ST MARYS	NSW	2760	N	Y	N
	14	0	QUEEN	ST	ST MARYS	NSW	2760	N	Y	N
	15	0	QUEEN	ST	ST MARYS	NSW	2760	N	Y	N
	17	0	QUEEN	ST	ST MARYS	NSW	2760	N	Y	N
	18	0	QUEEN	ST	ST MARYS	NSW	2760	N	Y	N
A	18	0	QUEEN	ST	ST MARYS	NSW	2760	N	Y	N
	18	0	QUEEN	ST	ST MARYS	NSW	2760	N	Y	N
	20	0	QUEEN	ST	ST MARYS	NSW	2760	N	Y	N
	21	0	QUEEN	ST	ST MARYS	NSW	2760	N	Y	N
	22	0	QUEEN	ST	ST MARYS	NSW	2760	N	Y	N
	24	0	QUEEN	ST	ST MARYS	NSW	2760	N	Y	N
	25	0	QUEEN	ST	ST MARYS	NSW	2760	Y	N	N
	25	0	QUEEN	ST	ST MARYS	NSW	2760	Y	N	N
	25	0	QUEEN	ST	ST MARYS	NSW	2760	Y	N	N
	25	0	QUEEN	ST	ST MARYS	NSW	2760	Y	N	N
	26	0	QUEEN	ST	ST MARYS	NSW	2760	N	Y	N
	27	0	QUEEN	ST	ST MARYS	NSW	2760	N	Y	N
	28	0	QUEEN	ST	ST MARYS	NSW	2760	N	Y	N
	29	0	QUEEN	ST	ST MARYS	NSW	2760	N	Y	N
	30	32	QUEEN	ST	ST MARYS	NSW	2760	N	Y	N
	31	0	QUEEN	ST	ST MARYS	NSW	2760	N	Y	N
	33	0	QUEEN	ST	ST MARYS	NSW	2760	N	Y	N
	34	0	QUEEN	ST	ST MARYS	NSW	2760	N	Y	N
	35	0	QUEEN	ST	ST MARYS	NSW	2760	N	Y	N
	36	0	QUEEN	ST	ST MARYS	NSW	2760	Y	N	N
2	36	0	QUEEN	ST	ST MARYS	NSW	2760	N	Y	N
3	36	0	QUEEN	ST	ST MARYS	NSW	2760	N	Y	N
1	36	0	QUEEN	ST	ST MARYS	NSW	2760	N	Y	N
	37	39	QUEEN	ST	ST MARYS	NSW	2760	N	Y	N
	38	0	QUEEN	ST	ST MARYS	NSW	2760	N	Y	N
	42	0	QUEEN	ST	ST MARYS	NSW	2760	N	Y	N
	43	0	QUEEN	ST	ST MARYS	NSW	2760	N	Y	N
	43	0	QUEEN	ST	ST MARYS	NSW	2760	N	Y	N
	44	0	QUEEN	ST	ST MARYS	NSW	2760	N	Y	N
	45	0	QUEEN	ST	ST MARYS	NSW	2760	Y	N	N
1	45	0	QUEEN	ST	ST MARYS	NSW	2760	N	Y	N
5	45	0	QUEEN	ST	ST MARYS	NSW	2760	N	Y	N
3	45	0	QUEEN	ST	ST MARYS	NSW	2760	N	Y	N

Unit	Street Number (from)	Street Number (to)	Street Name	Street Type	Suburb	State	Post Code	Residential	Non-residential	Feedback received
4	45	0	QUEEN	ST	ST MARYS	NSW	2760	N	Y	N
6	45	0	QUEEN	ST	ST MARYS	NSW	2760	N	Y	N
2	45	0	QUEEN	ST	ST MARYS	NSW	2760	N	Y	N
	46	0	QUEEN	ST	ST MARYS	NSW	2760	N	Y	N
	47	0	QUEEN	ST	ST MARYS	NSW	2760	N	Y	N
	48	0	QUEEN	ST	ST MARYS	NSW	2760	N	Y	N
	50	0	QUEEN	ST	ST MARYS	NSW	2760	N	Y	N
	51	0	QUEEN	ST	ST MARYS	NSW	2760	N	Y	N
	52	0	QUEEN	ST	ST MARYS	NSW	2760	N	Y	N
	54	0	QUEEN	ST	ST MARYS	NSW	2760	N	Y	N
47	55	0	QUEEN	ST	ST MARYS	NSW	2760	N	Y	N
	55	0	QUEEN	ST	ST MARYS	NSW	2760	Y	N	N
	56	0	QUEEN	ST	ST MARYS	NSW	2760	N	Y	N
	57	0	QUEEN	ST	ST MARYS	NSW	2760	N	Y	N
	57	0	QUEEN	ST	ST MARYS	NSW	2760	N	Y	N
	58	0	QUEEN	ST	ST MARYS	NSW	2760	N	Y	N
	58	0	QUEEN	ST	ST MARYS	NSW	2760	N	Y	N
	59	0	QUEEN	ST	ST MARYS	NSW	2760	Y	N	N
2	59	0	QUEEN	ST	ST MARYS	NSW	2760	N	Y	N
4	59	0	QUEEN	ST	ST MARYS	NSW	2760	N	Y	N
5	59	0	QUEEN	ST	ST MARYS	NSW	2760	N	Y	N
3	59	0	QUEEN	ST	ST MARYS	NSW	2760	N	Y	N
1	59	0	QUEEN	ST	ST MARYS	NSW	2760	N	Y	N
	60	0	QUEEN	ST	ST MARYS	NSW	2760	N	Y	N
	62	0	QUEEN	ST	ST MARYS	NSW	2760	N	Y	N
	64	0	QUEEN	ST	ST MARYS	NSW	2760	N	Y	N
	65	0	QUEEN	ST	ST MARYS	NSW	2760	N	Y	N
2	65	0	QUEEN	ST	ST MARYS	NSW	2760	N	Y	N
1	65	0	QUEEN	ST	ST MARYS	NSW	2760	N	Y	N
3	65	0	QUEEN	ST	ST MARYS	NSW	2760	N	Y	N
2	65	0	QUEEN	ST	ST MARYS	NSW	2760	N	Y	N
	65	0	QUEEN	ST	ST MARYS	NSW	2760	N	Y	N
	65	0	QUEEN	ST	ST MARYS	NSW	2760	N	Y	N
3	65	0	QUEEN	ST	ST MARYS	NSW	2760	N	Y	N
3	66	0	QUEEN	ST	ST MARYS	NSW	2760	N	Y	N
7	66	0	QUEEN	ST	ST MARYS	NSW	2760	N	Y	N
7A	66	0	QUEEN	ST	ST MARYS	NSW	2760	N	Y	N
9	66	0	QUEEN	ST	ST MARYS	NSW	2760	N	Y	N

Unit	Street Number (from)	Street Number (to)	Street Name	Street Type	Suburb	State	Post Code	Residential	Non-residential	Feedback received
7B	66	0	QUEEN	ST	ST MARYS	NSW	2760	N	Y	N
8A	66	0	QUEEN	ST	ST MARYS	NSW	2760	N	Y	N
5	66	0	QUEEN	ST	ST MARYS	NSW	2760	N	Y	N
	66	0	QUEEN	ST	ST MARYS	NSW	2760	Y	N	N
	66	0	QUEEN	ST	ST MARYS	NSW	2760	Y	N	N
4	66	0	QUEEN	ST	ST MARYS	NSW	2760	N	Y	N
6	66	0	QUEEN	ST	ST MARYS	NSW	2760	N	Y	N
1	66	0	QUEEN	ST	ST MARYS	NSW	2760	N	Y	N
8	66	0	QUEEN	ST	ST MARYS	NSW	2760	N	Y	N
8	66	0	QUEEN	ST	ST MARYS	NSW	2760	N	Y	N
	67	0	QUEEN	ST	ST MARYS	NSW	2760	N	Y	N
	67	0	QUEEN	ST	ST MARYS	NSW	2760	N	Y	N
	67	0	QUEEN	ST	ST MARYS	NSW	2760	N	Y	N
	67	0	QUEEN	ST	ST MARYS	NSW	2760	N	Y	N
	68	0	QUEEN	ST	ST MARYS	NSW	2760	N	Y	N
	69	0	QUEEN	ST	ST MARYS	NSW	2760	N	Y	N
	70	0	QUEEN	ST	ST MARYS	NSW	2760	N	Y	N
	71	0	QUEEN	ST	ST MARYS	NSW	2760	N	Y	N
2	72	0	QUEEN	ST	ST MARYS	NSW	2760	N	Y	N
	72	0	QUEEN	ST	ST MARYS	NSW	2760	N	Y	N
	73	0	QUEEN	ST	ST MARYS	NSW	2760	N	Y	N
	75	0	QUEEN	ST	ST MARYS	NSW	2760	N	Y	N
	75	0	QUEEN	ST	ST MARYS	NSW	2760	N	Y	N
	77	0	QUEEN	ST	ST MARYS	NSW	2760	N	Y	N
	79	0	QUEEN	ST	ST MARYS	NSW	2760	N	Y	N
	81	0	QUEEN	ST	ST MARYS	NSW	2760	N	Y	N
	82	0	QUEEN	ST	ST MARYS	NSW	2760	N	Y	N
	83	0	QUEEN	ST	ST MARYS	NSW	2760	N	Y	N
	84	0	QUEEN	ST	ST MARYS	NSW	2760	N	Y	N
	85	0	QUEEN	ST	ST MARYS	NSW	2760	N	Y	N
	86	0	QUEEN	ST	ST MARYS	NSW	2760	N	Y	N
	87	0	QUEEN	ST	ST MARYS	NSW	2760	N	Y	N
	87	0	QUEEN	ST	ST MARYS	NSW	2760	N	Y	N
	88	0	QUEEN	ST	ST MARYS	NSW	2760	N	Y	N
1	89	0	QUEEN	ST	ST MARYS	NSW	2760	N	Y	N
	89	0	QUEEN	ST	ST MARYS	NSW	2760	N	Y	N
	90	0	QUEEN	ST	ST MARYS	NSW	2760	N	Y	N
	91	0	QUEEN	ST	ST MARYS	NSW	2760	N	Y	N

Unit	Street Number (from)	Street Number (to)	Street Name	Street Type	Suburb	State	Post Code	Residential	Non-residential	Feedback received
	92	0	QUEEN	ST	ST MARYS	NSW	2760	N	Y	N
	92	0	QUEEN	ST	ST MARYS	NSW	2760	N	Y	N
	93	0	QUEEN	ST	ST MARYS	NSW	2760	N	Y	N
	95	0	QUEEN	ST	ST MARYS	NSW	2760	N	Y	N
	97	0	QUEEN	ST	ST MARYS	NSW	2760	N	Y	N
	98	0	QUEEN	ST	ST MARYS	NSW	2760	N	Y	N
	99	0	QUEEN	ST	ST MARYS	NSW	2760	N	Y	N
	99	0	QUEEN	ST	ST MARYS	NSW	2760	N	Y	N
	100	0	QUEEN	ST	ST MARYS	NSW	2760	N	Y	N
	102	0	QUEEN	ST	ST MARYS	NSW	2760	N	Y	N
	102	0	QUEEN	ST	ST MARYS	NSW	2760	N	Y	N
2	102	0	QUEEN	ST	ST MARYS	NSW	2760	N	Y	N
	102	0	QUEEN	ST	ST MARYS	NSW	2760	N	Y	N
	102	0	QUEEN	ST	ST MARYS	NSW	2760	N	Y	N
3	102	0	QUEEN	ST	ST MARYS	NSW	2760	N	Y	N
	104	0	QUEEN	ST	ST MARYS	NSW	2760	N	Y	N
1	104	0	QUEEN	ST	ST MARYS	NSW	2760	N	Y	N
1	106	0	QUEEN	ST	ST MARYS	NSW	2760	N	Y	N
2	106	0	QUEEN	ST	ST MARYS	NSW	2760	N	Y	N
	106	0	QUEEN	ST	ST MARYS	NSW	2760	N	Y	N
2	106	0	QUEEN	ST	ST MARYS	NSW	2760	N	Y	N
	106	0	QUEEN	ST	ST MARYS	NSW	2760	Y	N	N
1	106	0	QUEEN	ST	ST MARYS	NSW	2760	N	Y	N
	110	0	QUEEN	ST	ST MARYS	NSW	2760	N	Y	N
	110	0	QUEEN	ST	ST MARYS	NSW	2760	N	Y	N
	112	0	QUEEN	ST	ST MARYS	NSW	2760	N	Y	N
	1	0	ROSS	PL	ST MARYS	NSW	2760	Y	N	N
	2	0	ROSS	PL	ST MARYS	NSW	2760	Y	N	N
	3	0	ROSS	PL	ST MARYS	NSW	2760	Y	N	N
	3	0	ROSS	PL	ST MARYS	NSW	2760	Y	N	N
	3	0	ROSS	PL	ST MARYS	NSW	2760	Y	N	N
	4	0	ROSS	PL	ST MARYS	NSW	2760	Y	N	N
	5	0	ROSS	PL	ST MARYS	NSW	2760	Y	N	N
	5	0	ROSS	PL	ST MARYS	NSW	2760	Y	N	N
	5	0	ROSS	PL	ST MARYS	NSW	2760	Y	N	N
	6	0	ROSS	PL	ST MARYS	NSW	2760	Y	N	N
	7	0	ROSS	PL	ST MARYS	NSW	2760	Y	N	N
	8	0	ROSS	PL	ST MARYS	NSW	2760	Y	N	N



Unit	Street Number (from)	Street Number (to)	Street Name	Street Type	Suburb	State	Post Code	Residential	Non-residential	Feedback received
	9	0	ROSS	PL	ST MARYS	NSW	2760	Y	N	N
1	10	14	ROSS	PL	ST MARYS	NSW	2760	Y	N	N
8	10	14	ROSS	PL	ST MARYS	NSW	2760	Y	N	N
4	10	14	ROSS	PL	ST MARYS	NSW	2760	Y	N	N
10	10	14	ROSS	PL	ST MARYS	NSW	2760	Y	N	N
5	10	14	ROSS	PL	ST MARYS	NSW	2760	Y	N	N
11	10	14	ROSS	PL	ST MARYS	NSW	2760	Y	N	N
9	10	14	ROSS	PL	ST MARYS	NSW	2760	Y	N	N
12	10	14	ROSS	PL	ST MARYS	NSW	2760	Y	N	N
6	10	14	ROSS	PL	ST MARYS	NSW	2760	Y	N	N
3	10	14	ROSS	PL	ST MARYS	NSW	2760	Y	N	N
	10	14	ROSS	PL	ST MARYS	NSW	2760	Y	N	N
7	10	14	ROSS	PL	ST MARYS	NSW	2760	Y	N	N
2	10	14	ROSS	PL	ST MARYS	NSW	2760	Y	N	N
	11	0	ROSS	PL	ST MARYS	NSW	2760	Y	N	N
	13	0	ROSS	PL	ST MARYS	NSW	2760	Y	N	N
	15	0	ROSS	PL	ST MARYS	NSW	2760	Y	N	N
	16	0	ROSS	PL	ST MARYS	NSW	2760	Y	N	N
	17	0	ROSS	PL	ST MARYS	NSW	2760	Y	N	N
1	1	0	STATION	ST	ST MARYS	NSW	2760	Y	N	N
5	1	0	STATION	ST	ST MARYS	NSW	2760	Y	N	N
6	1	0	STATION	ST	ST MARYS	NSW	2760	Y	N	N
2	1	0	STATION	ST	ST MARYS	NSW	2760	Y	N	N
	1	0	STATION	ST	ST MARYS	NSW	2760	Y	N	N
3	1	0	STATION	ST	ST MARYS	NSW	2760	Y	N	N
7	1	0	STATION	ST	ST MARYS	NSW	2760	Y	N	N
4	1	0	STATION	ST	ST MARYS	NSW	2760	Y	N	N
4	2	0	STATION	ST	ST MARYS	NSW	2760	Y	N	N
	2	0	STATION	ST	ST MARYS	NSW	2760	Y	N	N
5	2	0	STATION	ST	ST MARYS	NSW	2760	Y	N	N
3	2	0	STATION	ST	ST MARYS	NSW	2760	Y	N	N
6	2	0	STATION	ST	ST MARYS	NSW	2760	Y	N	N
2	2	0	STATION	ST	ST MARYS	NSW	2760	Y	N	N
7	2	0	STATION	ST	ST MARYS	NSW	2760	Y	N	N
1	2	0	STATION	ST	ST MARYS	NSW	2760	Y	N	N
8	2	0	STATION	ST	ST MARYS	NSW	2760	Y	N	N
9	3	0	STATION	ST	ST MARYS	NSW	2760	Y	N	N
14	3	0	STATION	ST	ST MARYS	NSW	2760	Y	N	N

Unit	Street Number (from)	Street Number (to)	Street Name	Street Type	Suburb	State	Post Code	Residential	Non-residential	Feedback received
16	3	0	STATION	ST	ST MARYS	NSW	2760	Y	N	N
10	3	0	STATION	ST	ST MARYS	NSW	2760	Y	N	N
5	3	0	STATION	ST	ST MARYS	NSW	2760	Y	N	N
4	3	0	STATION	ST	ST MARYS	NSW	2760	Y	N	N
17	3	0	STATION	ST	ST MARYS	NSW	2760	Y	N	N
6	3	0	STATION	ST	ST MARYS	NSW	2760	Y	N	N
8	3	0	STATION	ST	ST MARYS	NSW	2760	Y	N	N
13	3	0	STATION	ST	ST MARYS	NSW	2760	Y	N	N
7	3	0	STATION	ST	ST MARYS	NSW	2760	Y	N	N
12	3	0	STATION	ST	ST MARYS	NSW	2760	Y	N	N
15	3	0	STATION	ST	ST MARYS	NSW	2760	Y	N	N
	3	0	STATION	ST	ST MARYS	NSW	2760	Y	N	N
11	3	0	STATION	ST	ST MARYS	NSW	2760	Y	N	N
2	3	0	STATION	ST	ST MARYS	NSW	2760	Y	N	N
3	3	0	STATION	ST	ST MARYS	NSW	2760	Y	N	N
18	3	0	STATION	ST	ST MARYS	NSW	2760	Y	N	N
1	3	0	STATION	ST	ST MARYS	NSW	2760	Y	N	N
2	11	0	STATION	ST	ST MARYS	NSW	2760	Y	N	N
	11	0	STATION	ST	ST MARYS	NSW	2760	Y	N	N
	15	0	STATION	ST	ST MARYS	NSW	2760	N	Y	N
	15	0	STATION	ST	ST MARYS	NSW	2760	N	Y	N
	63	0	STATION	ST	ST MARYS	NSW	2760	Y	N	N
3	63	0	STATION	ST	ST MARYS	NSW	2760	Y	N	N
2	63	0	STATION	ST	ST MARYS	NSW	2760	Y	N	N
1	63	0	STATION	ST	ST MARYS	NSW	2760	Y	N	N
	111	0	STATION	ST	ST MARYS	NSW	2760	N	Y	N
	112	0	STATION	ST	ST MARYS	NSW	2760	N	Y	N
	113	0	STATION	ST	ST MARYS	NSW	2760	N	Y	N
1	113	0	STATION	ST	ST MARYS	NSW	2760	N	Y	N
	113	0	STATION	ST	ST MARYS	NSW	2760	N	Y	N
	113	0	STATION	ST	ST MARYS	NSW	2760	N	Y	N
	114	0	STATION	ST	ST MARYS	NSW	2760	N	Y	N
	0	0	WEST	LANE	ST MARYS	NSW	2760	N	Y	N
	201	0	WEST	LANE	ST MARYS	NSW	2760	N	Y	N
	203	0	WEST	LANE	ST MARYS	NSW	2760	N	Y	N
	205	0	WEST	LANE	ST MARYS	NSW	2760	N	Y	N