



Sydney Metro WSA - SSTOM - STM - E57 St Marys Station Consultation Report

SMWSASSM-PLD-STM-SN100-CG-RPT-000001 (Rev 03)

Parklife Metro D&C

Version Control

Revision	Author	Date	Comments	Approved by
A	J.Spence	04/10/2023	Initial draft	R.Noakes
B	J.Spence	13/10/2023	Revised in response to Sydney Metro comments	R.Noakes
00	J.Spence	29/11/2023	Updated document	R.Noakes
01	J.Spence	14/12/2023	Revised in response to Sydney Metro comments	R.Noakes
02	J.Spence	12/04/2024	Updated document	R.Noakes
03	J.Spence	30/04/2024	Revised in response to comments	R.Noakes

Signature

Details of Revision Amendments Document Control

The Parklife Metro Environment Manager and the Parklife Metro Stakeholder & Community Engagement Director are responsible for ensuring this report is reviewed and approved and updated as required.

The Parklife Metro Community & Stakeholders Place Manager is responsible for the consultation and updating of this report, as required.

Amendments

Any revisions or amendments must be approved by the Environment Manager and the Stakeholder & Community Engagement Director before being distributed and implemented.

Contents

Glossary	4
1 Overview	5
1.1 Project background	5
1.2 SSTOM scope of works.....	5
1.2.1 St Marys Metro Station.....	8
1.3 Out-of-hours scope of works	8
1.3.1 Ongoing oversized plant and equipment deliveries	8
1.3.2 Extended work hours for concrete works	9
1.3.3 Tower crane 1 installation	9
2 Conditions of Approval requirements	10
2.1 CoA E57 Out-of-hours Works – Community Consultation on Respite.....	10
2.2 Respite eligibility.....	10
2.3 Mitigation measures and planned respite.....	11
3 Consultation tools and channels	12
3.1 Communications tools	12
3.2 Communication activities timeline	13
3.3 Stakeholder list.....	14
3.4 Distribution maps.....	17
4 Conclusion	20
Appendix A Impacted properties and consultation records	21
Appendix B Communication materials	22
Appendix C Conditions of Approval (SSI 10051)	26
Appendix D Distribution list 200m radius of site	27

Glossary

Standard terms and definitions.

TABLE 1. STANDARD TERMS

Term	Definition
Project	Sydney Metro – Western Sydney Airport
Parklife Metro	Consortium comprising entities of Plenary, Siemens Mobility, Siemens Financial Services, WeBuild and RATP Dev as successful contractors for the Sydney Metro Western Sydney Airport SSTOM Package.
Parklife Metro D&C	Parklife Metro Design and Construct. Consists of WeBuild S.P.A, Siemens Mobility Pty Ltd. Responsible for the construction of SSTOM Works

TABLE 2. ABBREVIATIONS

Term	Definition
CCMS	Construction Complaints Management System
CCS	Community Communications Strategy
CEMP	Construction Environmental Management Plan
CNVS	Sydney Metro Construction Noise and Vibration Standard
CNVIS	Construction Noise and Vibration Impact Statement
CNVMP	Construction Noise and Vibration Management Plan
CoA	Conditions of Approval
CSSI	Critical State Significant Infrastructure
DNVIS	Detailed Noise and Vibration Impact Statement
DPE	Department of Planning and Environment
EPA	NSW Environment Protection Authority
EPL	Environmental Protection Licence
NML	Noise management level
OOH	Out-of-hours
OOHW	Out-of-hours work
OSOM	Over-size over-mass
SBT	Station boxes and tunnelling works
SCAW	Surface and civil alignment works
SM-WSA	Sydney Metro – Western Sydney Airport
SSTOM	Stations, Systems, Trains, Operations and Maintenance

1 Overview

This E57 Community Consultation Report provides a summary of consultation undertaken by Parklife Metro in accordance with Condition of Approval E57, with respect to out-of-hours work (OOHW), which includes deliveries of plant and equipment, extended work hours for concrete pours, concrete finishing works and tower crane installation at St Marys Metro Station.

1.1 Project background

The Sydney Metro – Western Sydney Airport (SM-WSA) will become the transport spine for Greater Western Sydney, connecting communities and travellers with the new Western Sydney International (Nancy-Bird Walton) Airport and the growing region.

The city-shaping project, from St Marys through to the new airport and the Western Sydney Aerotropolis (the new suburb of Bradfield), will provide a major economic stimulus for western Sydney, supporting more than 14,000 jobs during construction for the NSW and national economies.

Jointly funded by the Australian and NSW Governments, the 23-kilometre new railway will link residential areas with job hubs including the new Aerotropolis and connect travellers from the new airport to the rest of Sydney's public transport system.

The Australian and NSW governments have awarded all three major contracts for the Sydney Metro – Western Sydney Airport project:

- Station boxes and tunnelling (SBT) – currently in delivery
- Surface and civil alignment works (SCAW) – currently in delivery
- Stations, Systems, Trains, Operations and Maintenance (SSTOM) – currently in delivery

1.2 SSTOM scope of works

In December 2022, the largest ever Public Private Partnership (PPP) contract in New South Wales, was awarded to Parklife Metro for the Stations, Systems, Trains, Operations and Maintenance (SSTOM) works for the Sydney Metro - Western Sydney Airport Project.

Parklife Metro will deliver:

- Around 4.3km of twin rail tunnels (generally located side by side) between St Marys (the Northern extent of the project) and Orchard Hills
- A cut-and-cover tunnel around 350 metres long (including tunnel portal), transitioning to an in-cutting rail alignment south of the M4 Western Motorway at Orchard Hills
- Around 10km of rail alignment between Orchard Hills and Western Sydney International, consisting of a combination of viaduct and surface rail alignment
- Around two kilometres of surface rail alignment within Western Sydney International Airport
- Around 3.3km of twin rail tunnels (including tunnel portal) within Western Sydney International Airport
- Around 3km of twin rail tunnels between Western Sydney International Airport and the Aerotropolis Core
- Six new Metro Stations:
 - St Marys (providing an interchange with the existing Sydney Trains suburban rail network)
 - Orchard Hills
 - Luddenham
 - Airport Business Park
 - Airport Terminal

- Aerotropolis (the new Western Parkland City)
- Grade separation of the track alignment at key locations including:
 - Where the alignment interfaces with existing infrastructure such as the Great Western Highway, M4 Western Motorway, Lansdowne Road, Patons Lane, the Warragamba to Prospect Water Supply Pipelines, Luddenham Road, the future M12 Motorway, Elizabeth Drive, Derwent Road and Badgerys Creek Road
 - Crossings of Blaxland Creek, Cosgroves Creek, Badgerys Creek and other small waterways to provide flood immunity for the Project
- Modifications to the existing Sydney Trains station and rail infrastructure at St Marys (where required) to support interchange and customer transfer between the new metro station and the existing Sydney Trains suburban rail network
- A stabling and maintenance facility and operational control centre located to the south of Blaxland Creek and east of the proposed metro track
- New pedestrian, cycle, park-and-ride and kiss-and-ride facilities, public transport interchange infrastructure, road infrastructure and landscaping as part of the station precincts.

Parklife Metro will also operate and maintain the Sydney Metro – Western Sydney Airport (SM-WSA) line, and its assets for 15 years after it becomes operational in 2026.

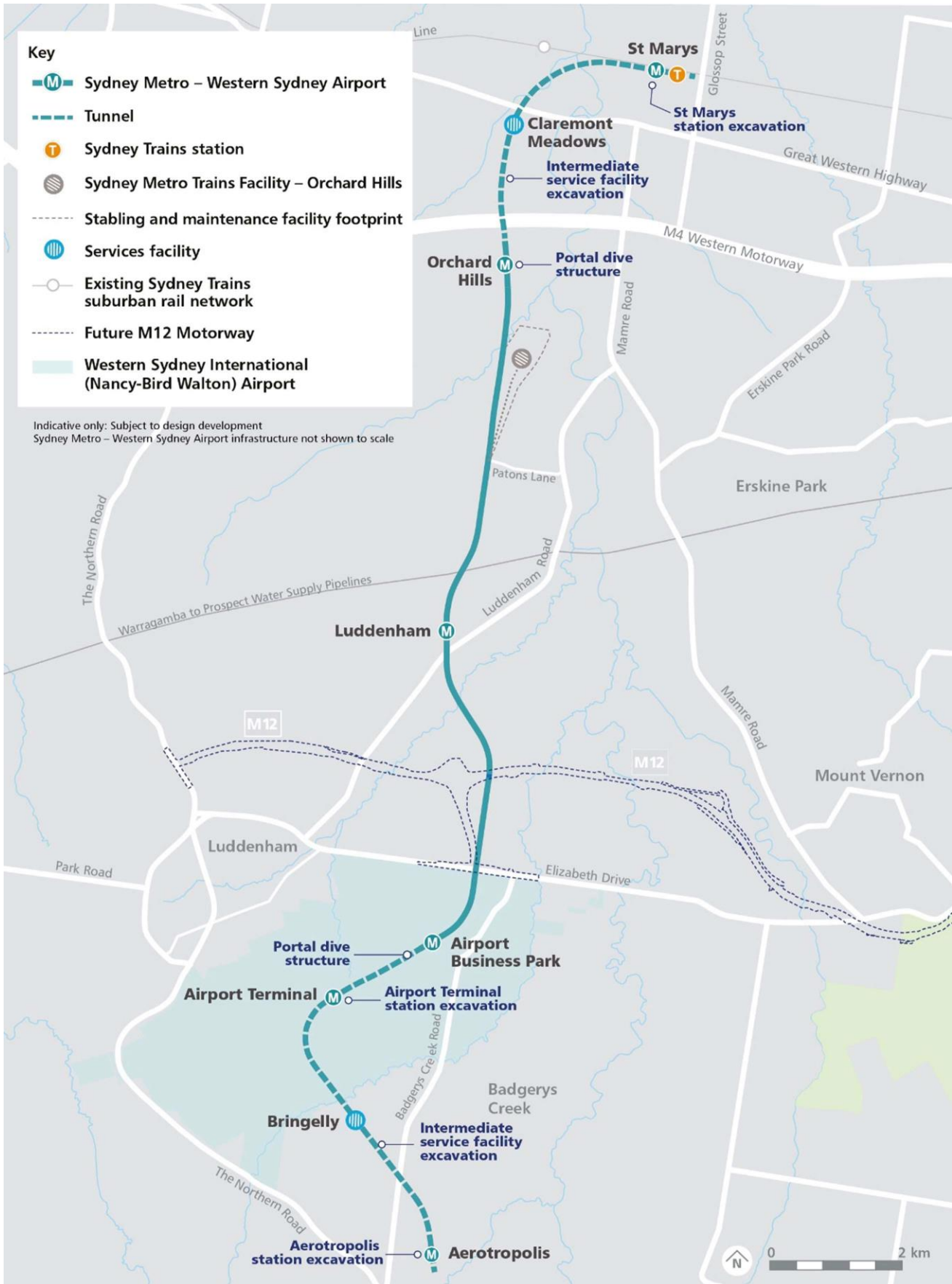


FIGURE 1. MAP OF THE SM-WSA PROJECT ALIGNMENT, AND STATION LOCATIONS

1.2.1 St Marys Metro Station

St Marys Metro Station is a cut-and-cover underground station, which will be constructed into a station box, with platforms located below the existing surface level. Construction of the station will move progressively up, from the bottom of the excavation creating a "wall-floor-wall-floor" sequence, erected progressively from the foundation to the ground level and, where envisaged, above ground with the elevated buildings.

Key features and benefits of St Marys Metro Station will include:

- new secure bicycle parking
- reconfigured bus interchange and shelters located on both sides of Station Street and a bus layover area located to the east of St Marys Metro Station
- kiss-and-ride and point-to-point vehicle facilities on both the northern and southern sides of the T1 Western Line
- above-ground pedestrian connection to the existing St Marys Station
- existing pedestrian overpass at St Marys Station retained
- upgrades to the existing road reserves
- new pedestrian crossings
- new public plazas adjacent to the proposed station entrances
- space for potential future station retail for an integrated station and precinct development (subject to separate approval).

1.3 Out-of-hours scope of works

1.3.1 Ongoing oversized plant and equipment deliveries

Some activities, such as over-size over-mass material and equipment deliveries must be carried out at night when there is approval to occupy the roadway, to minimise traffic disruption and reduce safety risks to workers and road users.

Removal of the over-size over-mass materials and equipment will also be required to be removed from site out-of-hours to when there is approval to occupy the roadway, to minimise traffic disruption and reduce safety risks to workers and road users.

Deliveries and removal from site requiring out-of-hours work (OOHW) may include, but is not limited to:

- Mobile cranes
- Excavators
- Tower crane components
- Other oversized materials and equipment.

1.3.1.1 Tower crane oversized plant and equipment deliveries

As part of the installation of the tower crane, we will require five nights of OOHW, to deliver the tower crane components from **Monday 15 April to Friday 19 April 2024**. If our work cannot be completed on these dates due to inclement weather, our contingency dates will be **Monday 6 May to Friday 10 May 2024**. Full list of deliveries and dates listed below.

Date	Time	Equipment
15 April 2024	From 10pm to 7am	2 x tower baskets and platforms 4 x towers Slew mount and slew mount platforms
16 April 2024	From 10pm to 7am	Front deck and rear decks with handrails Slew ring bolts
17 April 2024	From 10pm to 7am	2 x main boom sections (8 in total) Single fall hook A-frame
18 April 2024	From 10pm to 7am	4 x main boom sections (8 in total) Mobile crane
19 April 2024	From 10pm to 7am	2 x main boom sections (8 in total) Main boom head section with swivel

1.3.2 Extended work hours for concrete works

Due to the size of the concrete pours for the station box base slabs and walls, we will require to work extended construction hours to complete the pours and finishing works to mitigate any safety and quality risks.

Concrete pours extended hours are:

- Concrete pours will continue from 6pm to 8pm, Monday to Friday; and 1pm to 4pm Saturdays
- Concrete pours are permitted up to 9pm, Monday to Friday, up to 12 times only
- Concrete finishing works inside the station box will continue from 6pm to 10pm Monday to Friday; and 1pm to 4pm Saturdays.

1.3.3 Tower crane 1 installation

A tower crane will be installed at St Marys Metro Station from late-April 2024. This tower crane is a Marr 2480D Heavy Lift Luffing tower crane and is the largest capacity luffing tower crane in the world.

With a maximum height of 145 metres, 120 metre boom radius, 12 x 12 metre foundation and 2 metre base depth, will see the lifting capacity at 330 tonnes.

The tower crane will have four tower components, with the deck sitting on top of the towers. The boom (92.7m in length) and fly (30 m in length) will be attached to the deck, creating a maximum 120.2 m radius to reach into the station box.

Due to space restrictions on site, the tower crane will be constructed within the site boundary, however when lifting into place, the towers will hang across the intersection of Phillip Street and Blair Street, whilst connecting to the base.

For the safety of the local community, pedestrians and motorists, this work will have to be completed when the road network is at its quietest, and to limit impacts to the bus routes and network. Due to the impacts to the bus network and the local roads, road occupancy licences were only available on a Sunday to complete this work, whilst bus services were either not running, or minimal services.

For the safety of our workers, this high-risk task is best suited to be completed during daytime hours, so they have ample light to complete the work, and early in the morning before the wind speeds pick up, making it unsuitable to finish the activity.

Works will take place on **Sunday 21 April 2024, from 7am to 3pm**. Works to prepare for the final lift of the boom and fly to the tower crane base will occur on **Saturday 20 April 2024, between 8am and 6pm**. **No noisy works will occur after 1pm on Saturday.**

If work cannot be completed on **Sunday 21 April 2024**, contingency dates are **Sunday 12 May 2024, from 7am to 3pm**. Works to prepare for the final lift of the boom and fly to the tower crane base will occur on **Saturday 20 April 2024, between 8am and 6pm**. **No noisy works will occur after 1pm on Saturday.**

2 Conditions of Approval requirements

This E57 Community Consultation Report provides a summary of consultation undertaken in accordance with Condition of Approval (CoA) E57 with respect to out of hours works activities proposed at the St Marys Metro Station site.

2.1 CoA E57 Out-of-hours Works – Community Consultation on Respite

Condition of Approval E57 states:

In order to undertake out-of-hours work outside the work hours specified under Condition E38, appropriate respite periods for the out-of-hours work must be identified in consultation with the community at each affected location on a regular basis. This consultation must include (but not be limited to) providing the community with:

- (a) a progressive schedule for periods no less than three (3) months, of likely out-of-hours work;
- (b) a description of the potential work, location and duration of the out-of-hours work;
- (c) the noise characteristics and likely noise levels of the work; and
- (d) likely mitigation and management measures which aim to achieve the relevant noise management levels (NMLs) under Condition E43 (including the circumstances of when respite or relocation offers will be available and details about how the affected community can access these offers).

The outcomes of the community consultation, the identified respite periods and the scheduling of the likely out-of-hour work must be provided to the ER, EPA and the Planning Secretary prior to the out-of-hours work commencing.

Note: Respite periods can be any combination of days or hours where out-of-hours work would not be more than 5 dB(A) above the RBL at any residence.

2.2 Respite eligibility

In accordance with the Sydney Metro Construction Noise and Vibration Standard (CNVS), the Construction Noise and Vibration Management Plan (CNVMP), and the Detailed Noise and Vibration Impact Statements (DNVIS); all noise affected receivers are eligible for respite periods, applicable during out-of-hours activities when works are predicted to exceed the NML's during evening and night time periods.

Additional mitigation measures as per the CNVS, CNVMP and DNVIS are included in Table 1 below.

TABLE 1. OUT-OF-HOURS MITIGATION MEASURES AS PER THE PROJECTS ENVIRONMENTAL PLANNING DOCUMENTS

Time period		Mitigation measures for predicted LAeq (15 minute) airborne noise level above NML			
		0-10dB	10-20dB	20-30dB	>30dB
Approved construction hours	Mon-Fri (7:00am - 6:00pm)	-	LB	LB, M, SN	LB, M, SN
	Sat (8:00am – 1:00pm)				
	Sun/Pub Hol (Nil)				
OOHW (Evening)	Mon-Fri (6:00pm – 10:00pm)	LB	LB, M	LB, M, SN, RO	LB, M, SN, IB, PC, RO
	Sat (1:00pm – 10:00pm)				
	Sun/Pub Hol (8:00am – 6:00pm)				
OOHW (Night)	Mon-Fri (10:00pm – 7:00am)	LB	LB, M, SN, RO	LB, M, SN, IB, PC, RO, AA	LB, M, SN, IB, PC, RO, AA
	Sat (10:00pm – 8:00am)				
	Sun/Pub Hol (6:00pm – 7:00am)				

NOTE: Phone calls (PC), Monitoring (M), Individual briefings (IB), Alternative Accommodation (AA), Specific Notification (SN), letterbox drop (LB), Duration Reduction (DR), Project Specific Respite Offer (RO).

2.3 Mitigation measures and planned respite

This work is expected to generate intermittent periods of noise, when the delivery trucks have reached site, and unloading the equipment. For the proposed out-of-hours work, the following mitigation measures and respite will be implemented:

- Works will be undertaken no more than three nights in a week, no more than two consecutive nights, and no more than 10 nights in a month
- Seven days respite from all PLM out-of-hours work after the installation of the tower crane is complete, to provide respite to the local residents
- Noise monitoring will be undertaken to confirm our noise modelling, and inform additional mitigation measures, as required
- All vehicles will be turned off when not in use, non-tonal reversing alarms will be fitted to plant and machinery, and trucks will avoid reversing, where feasible
- Temporary lighting will be directed away from properties, to avoid light spill
- Communication will be limited to radios only when moving and unloading equipment, with no use of horns or loud radios
- Alternate use of chains such as harness to minimise metal to metal contact
- Use of rubber faced mallets instead of hammers to reduce metal to metal contact
- Ongoing doorknocks and consultation, to seek further feedback, and to be able to address any reasonable concerns
- Co-ordination of out-of-hours works with the station boxes and tunnelling contractor to ensure respite conditions are met.

3 Consultation tools and channels

Community consultation has been undertaken prior to commencement of the out-of-hours work in accordance with the PLM Community Communications Strategy (CCS) and the Project’s Environmental Protection Licence (EPL) 21807.

3.1 Communications tools

Consultation includes a range of tools including:

Type	Purpose and use
Monthly construction updates	<p>A monthly construction update distributed at the start of each month, providing details on:</p> <ul style="list-style-type: none">• Upcoming construction activities for the month, including any OOHW• Hours of work, and durations• Equipment used on site• Traffic, pedestrian and cyclist routes on any changes, closures, and/detours• Likely impacts of construction activities, including noise, vibration, traffic, access, and dust• Mitigation measures to reduce the impacts of activities• Work location maps• Contact details, including how feedback can be provided
Out-of-hours notifications	<p>An out-of-hours notification distributed to a 200m radius of site, or further as required to notify all noise affected receivers, no less than seven calendar days and no more than 14 calendar days, prior to OOHW commencing, providing details on:</p> <ul style="list-style-type: none">• Upcoming OOH construction activities, including hours of work and durations• Equipment used on site• Traffic, pedestrian and cyclist routes on any changes, closures, and/detours• Likely impacts of construction activities, including noise, vibration, traffic, access, and dust during the OOHW• Mitigation measures to reduce the impacts of activities during the OOHW• OOHW location maps• Contact details, including how feedback can be provided
Specific notifications	<p>Specific notification distributed to those identified as impacted receivers during the OOHW.</p> <p>Specific notification is used to support the monthly construction updates and OOHW notifications, to provide additional details on the impacts, and any changes that may occur.</p>

Email campaigns	Email updates sent to registered stakeholders to describe the OOHW activities including a link to the full notification listed on the Sydney Metro website. Email updates also include contact details, including how feedback can be provided.
Doorknocks	Doorknocks to impacted properties to consult on the proposed OOHW, and any feedback.
Phone calls	Phone calls to impacted properties (where contact details are on record) to consult on the proposed OOHW, and any feedback.
Targeted emails	Targeted emails to impacted properties (where contact details are on record) to consult on the proposed OOHW, and any feedback.
Community Information Line: 1800 717 703	Provides community access to the project communications team during construction hours. OOH complaints will be referred to the on-call Place Manager.
Sydney Metro email: sydneymetroswa@transport.nsw.gov.au	Provides access during business hours to the Sydney Metro project communications team. Website enquiries are directed through this email address.
Postal address for written feedback: Sydney Metro, PO BOX K659 Haymarket, NSW 1240	Provides access to the broader Sydney Metro project. Address is included in all notifications and newsletters.
Consultation Manager	All interactions with stakeholders will be recorded in this database which is established by Sydney Metro.

3.2 Communication activities timeline

TABLE 3. COMMUNICATION ACTIVITIES TIMELINE

Date	Activity	
22 February 2024	Monthly construction update distributed to 200m radius of site (properties listed in Appendix A)	Also includes: Campaign Email Notification uploaded to SM website
1 March 2024	Specific notification distributed for upcoming OOH delivery	
25 March 2024	Monthly construction update distributed to 200m radius of site (properties listed in Appendix A)	Also includes: Campaign Email Notification uploaded to SM website
8 April 2024	Specific notification distributed for tower crane installation	Properties listed Section 3.3, Table 4.

10 April 2024	Door knock properties listed in Appendix A with specific notification for tower crane installation	SWMY slips left if no contact was made.
11 April 2024	Second attempt of doorknock properties for tower crane installation	Follow up with impacted properties we have been unable to reach via doorknocking and SWMY slips left if no contact was made.
15 April 2024	Out-of-hours notification distributed to 200m radius of site, 7 calendar days prior to OOHW commencing	Distribution to properties shown in Figure 3. Also includes: Campaign Email Notification uploaded to SM website
15 April 2024	Respite offer letters distributed to properties triggered in noise modelling	Doorknock included.
18 April 2024	Respite offers close 5pm.	
19 April 2024	Respite offers distributed to residents who accepted offer of respite.	Doorknock properties with offers and re-engage about upcoming works on Sunday 21 April 2024.
6 May – 12 Mar 2024	<i>Contingency dates for inclement weather for tower crane installation</i>	<i>Communications to follow the above.</i>
Ongoing	Specific notifications for any out-of-hours deliveries, 7-14 calendar days prior to OOHW commencing	Properties listed Section 3.3, Table 4.
Ongoing	Re-engagement with the community on any proposed OOHW. All feedback received will be considered and implemented, where feasible.	

3.3 Stakeholder list

TABLE 4. STAKEHOLDER LIST FOR DISTRIBUTION AREAS

Stakeholder	Location	Communication activities
Broader distribution area (Properties listed in Appendix D)	200m of site - St Marys	Monthly notifications OOHW notifications Campaign emails
Oversized deliveries - impacted properties and nearby residents	34-36 Phillip Street (18 units) 31 Phillip Street (6 units) 1 Station Street (7 units)	Monthly notifications OOHW notifications Specific notifications

	2 Station Street (8 units)	Campaign emails
	3 Station Street (19 units)	Doorknocks
	3 Chesham Street	Targeted emails
	3A Chesham Street	Phone calls
	2 Chesham Street	
	2A Chesham Street	
Extended hours – concrete pours	34-36 Phillip Street (18 units)	Monthly notifications
	31 Phillip Street (6 units)	OOHW notifications
	11 Phillip Street (24 units)	Campaign emails
	1 Station Street (7 units)	
	2 Station Street (8 units)	
	3 Station Street (19 units)	
	6 Chesham Street	
	5 Chesham Street	
	4 Chesham Street	
	3 Chesham Street	
	3A Chesham Street	
	2 Chesham Street	
	2A Chesham Street	
Extended hours – concrete finishing works (inside station box)	2 Station Street (8 units)	Monthly notifications
	3 Station Street (19 units)	OOHW notifications
		Campaign emails
Tower crane installation (OOH deliveries)	34-36 Phillip Street (18 units)	Monthly notifications
	31 Phillip Street (6 units)	OOHW notifications
	1 Station Street (7 units)	Specific notification
	2 Station Street (8 units)	Respite offers (as required)
	3 Station Street (19 units)	Doorknocks/phone calls
	3 Chesham Street	Targeted emails
	3A Chesham Street	Individual briefings
	2 Chesham Street	Campaign emails
	2A Chesham Street	
Tower crane installation (Sunday installation)	34-36 Phillip Street	Monthly notifications
	31 Phillip Street	OOHW notifications
	29 Phillip Street	Specific notification
	32 Phillip Street	Respite offers (as required)
	30 Phillip Street	Doorknocks/phone calls

28 Phillip Street	Targeted emails
17 Phillip Street	Individual briefings
19 Phillip Street	Campaign emails
4 Chesham Street	
3 Chesham Street	
3A Chesham Street	
2 Chesham Street	
2A Chesham Street	
1 Chesham Street	
1 A Chesham Street	
7 Lethbridge Street	
9 Lethbridge Street	
11 Lethbridge Street	
6 Ross Place	
8 Ross Place	
10-14 Ross Place	
16 Ross Place	
17 Ross Place	
4 Gidley Street	

Businesses

Local businesses and retailers along Queen Street, Station Street and Phillip Street	Monthly notifications OOHW notifications Campaign emails
Commercial and industrial receivers along Glossop Street and Kurrajong Road, and the industrial area located to the north of the existing St Marys Station and the Project.	Phone calls Targeted emails Individual briefings

3.4 Distribution maps

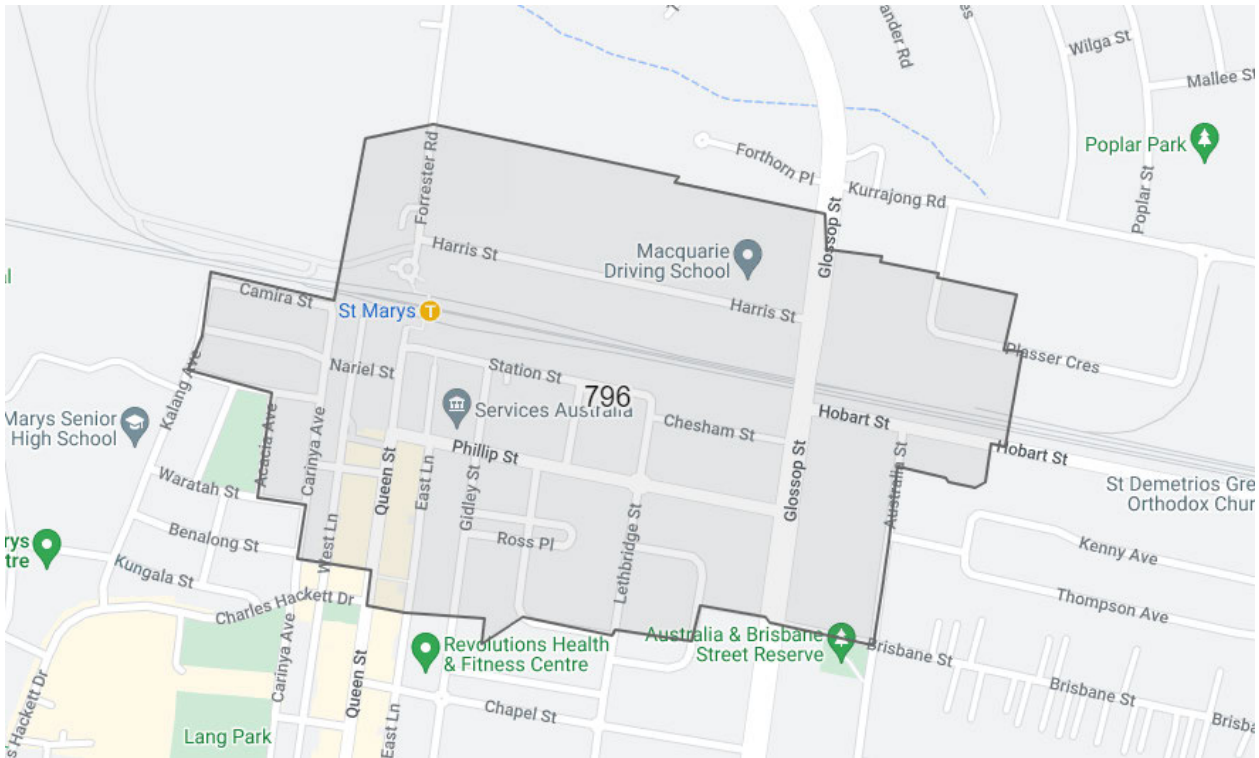


FIGURE 2. DISTRIBUTION MAP - 200M RADIUS OF SITE (GENERAL OOHW NOTIFICATIONS)

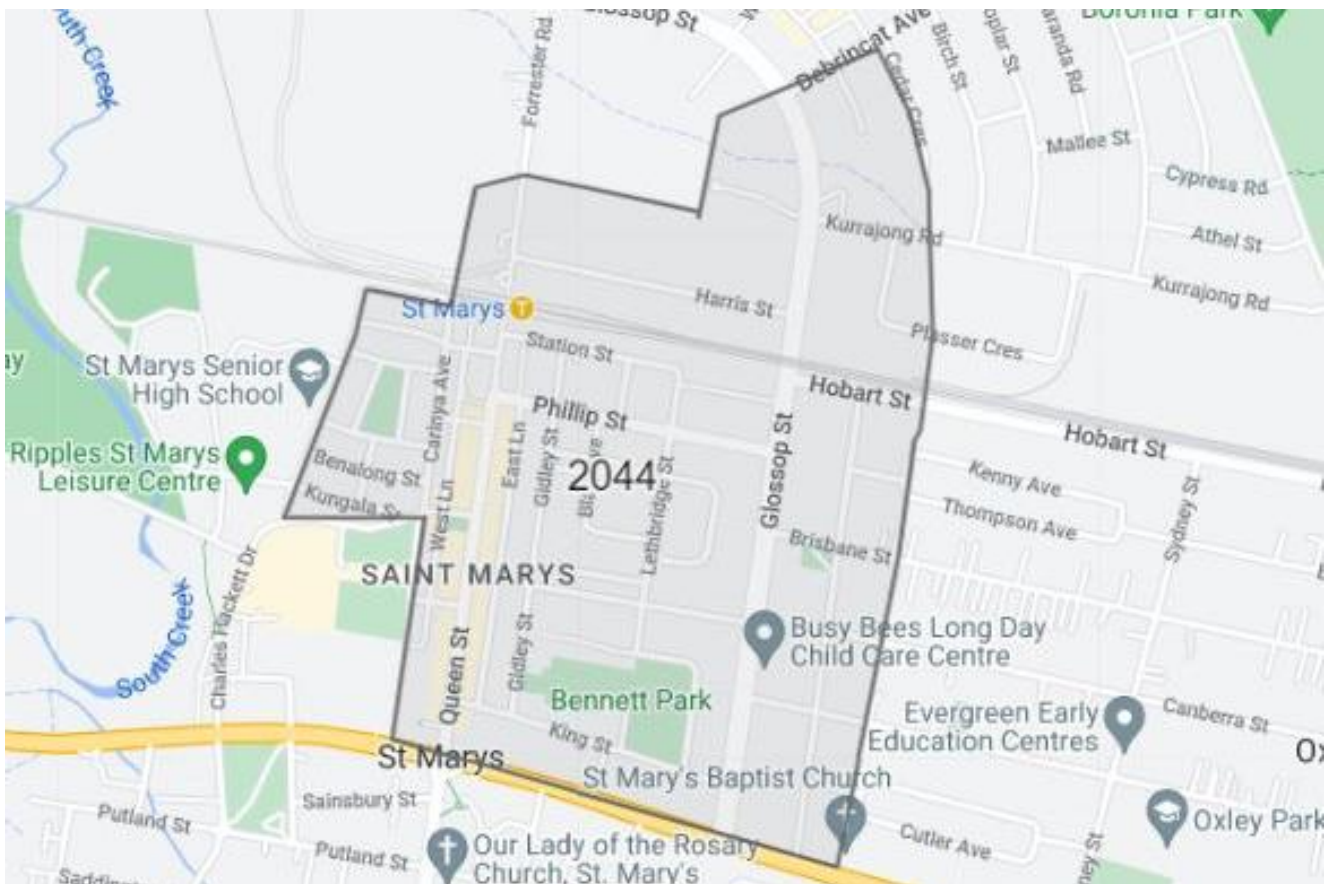


FIGURE 3. DISTRIBUTION MAP FOR TOWER CRANE INSTALLATION OUT-OF-HOURS NOTIFICATION

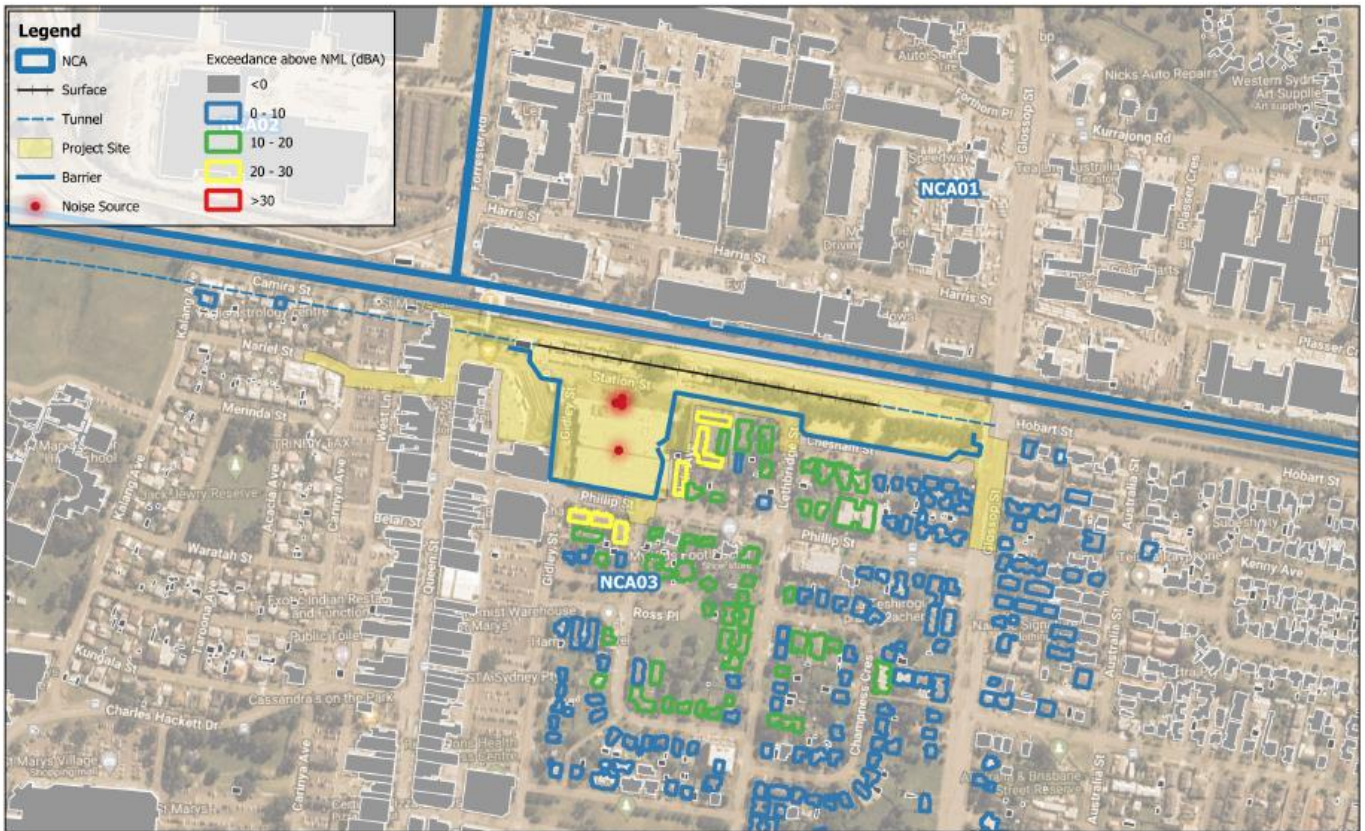


FIGURE 4. TOWER CRANE INSTALLATION NOISE MODELLING MAP



FIGURE 5. OVERSIZED PLANT AND EQUIPMENT DELIVERIES NOISE MODELLING MAP

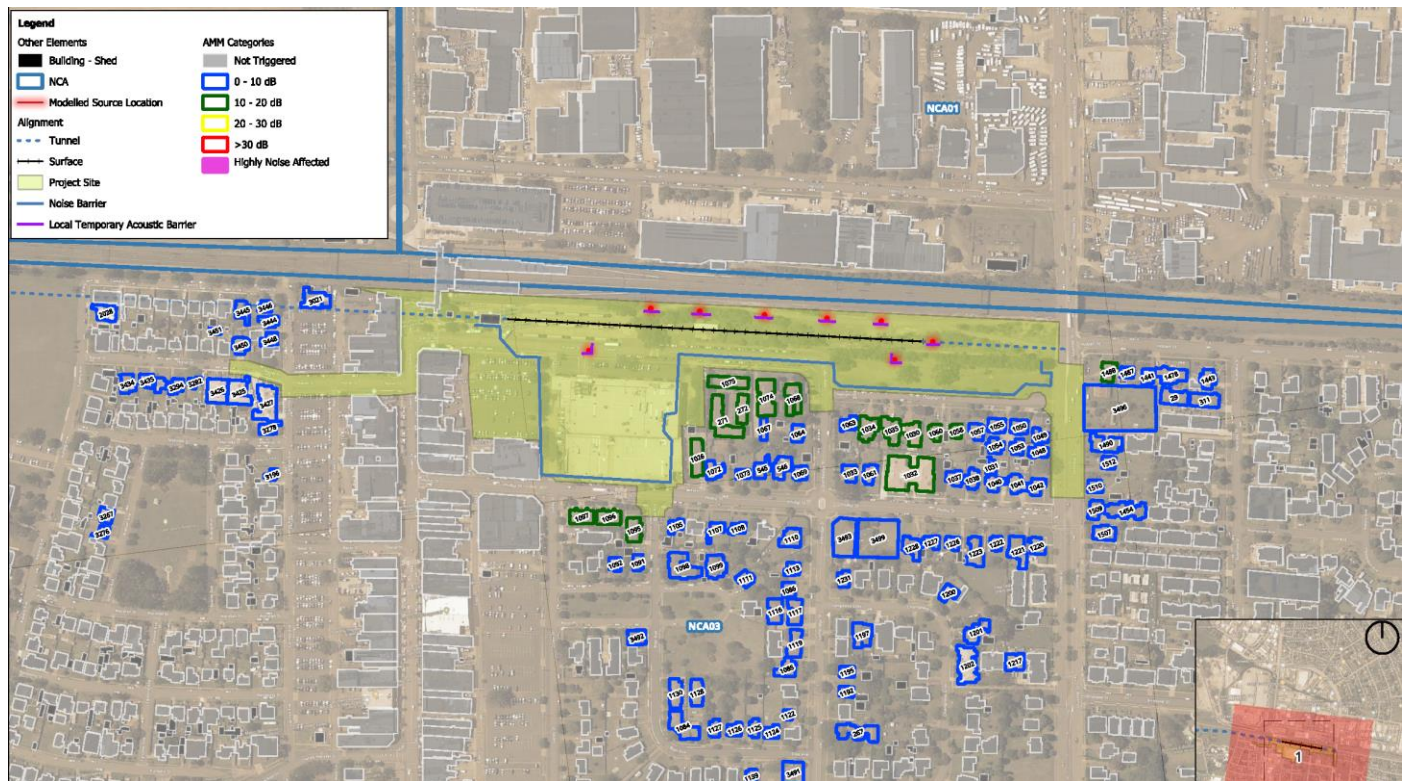


FIGURE 6. EXTENDED CONCRETE POURS NOISE MODELLING MAP



FIGURE 7. CONCRETE FINISHING WORKS NOISE MODELLING MAP

4 Conclusion

All consultation undertaken to date, including monthly construction updates; OOHW notifications, specific notifications and door knocks to all noise affected receivers identified in our noise modelling has resulted in no feedback or preferences on specific mitigation measures, or respite periods. Receivers have agreed to the respite periods proposed for all upcoming OOHW.

The standard mitigation measures and respite requirements established in the Sydney Metro Construction Noise and Vibration Standard and Project EPL 21807, will be implemented during the works and follow-up consultation will be undertaken by the Parklife Metro Community Place Manager to ascertain the effectiveness of the implemented controls and seek additional feedback.

As per E57, if any feedback is received it will be considered and implemented where feasible, and any specific feedback or preferences on mitigation measures will require a revision of the DNVIS.

Appendix A Impacted properties and consultation records

Unit No.	Address	Name	Phone	Email	Contact made?	Comments
1	31 Phillip Street	[REDACTED]	[REDACTED]		Y	No comments or feedback on out-of-hours deliveries to date, nor issues with the proposed tower crane installation activities.
2	31 Phillip Street	[REDACTED]			N	Specific notification and SWMY slip left in letterbox.
3	31 Phillip Street	[REDACTED]	[REDACTED]		N	Specific notification and SWMY slip left in letterbox.
4	31 Phillip Street	[REDACTED]	[REDACTED]		N	Specific notification and SWMY slip left in letterbox.
5	31 Phillip Street	[REDACTED]	[REDACTED]		N	Specific notification and SWMY slip left in letterbox.
6	31 Phillip Street	[REDACTED]	[REDACTED]		N	Specific notification and SWMY slip left in letterbox.
1	1 Station Street	[REDACTED]	[REDACTED] [REDACTED]		N	Specific notification and SWMY slip left in letterbox.

2	1 Station Street	[REDACTED]	[REDACTED]	[REDACTED]	N	Specific notification and SWMY slip left in letterbox.
3	1 Station Street	[REDACTED]	[REDACTED]	[REDACTED]	N	Specific notification and SWMY slip left in letterbox.
4	1 Station Street	[REDACTED]	[REDACTED]	[REDACTED]	N	Specific notification and SWMY slip left in letterbox.
5	1 Station Street	[REDACTED]	[REDACTED]	[REDACTED]	N	Specific notification and SWMY slip left in letterbox.
6	1 Station Street	[REDACTED]			N	Specific notification and SWMY slip left in letterbox.
7	1 Station Street	[REDACTED]	[REDACTED]	[REDACTED]	N	Specific notification and SWMY slip left in letterbox.
1	2 Station Street	[REDACTED]			N	Specific notification and SWMY slip left in letterbox.
2	2 Station Street	[REDACTED]	[REDACTED]		Y	No comments or feedback on out-of-hours deliveries to date, nor issues with the proposed tower crane installation activities.

3	2 Station Street	██████████	██████████	████████████████████	N	Specific notification and SWMY slip left in letterbox.
4	2 Station Street	██████████			N	Specific notification and SWMY slip left in letterbox.
5	2 Station Street	██████████			N	Specific notification and SWMY slip left in letterbox.
6	2 Station Street	██████████			N	Specific notification and SWMY slip left in letterbox.
7	2 Station Street	██████████	██████████		N	Specific notification and SWMY slip left in letterbox.
8	2 Station Street	██████████	██████████		N	Specific notification and SWMY slip left in letterbox.
1	3 Station Street	██████████	██████████	████████████████████	N	Specific notification and SWMY slip left in letterbox.
2	3 Station Street	██████████	██████████	████████████████████	N	Specific notification and SWMY slip left in letterbox.

3	3 Station Street	██████████	██████████		Y	Mother-in-law lives in the property. No comments or feedback on out-of-hours deliveries to date, nor issues with the proposed tower crane installation activities.
4	3 Station Street	██████████	██████████	██████████████████	Y	No comments or feedback on out-of-hours deliveries to date, nor issues with the proposed tower crane installation activities.
5	3 Station Street	██	██████████		Y	No comments or feedback on out-of-hours deliveries to date, nor issues with the proposed tower crane installation activities.
6	3 Station Street	██████████	██████████	██████████████████	N	Specific notification and SWMY slip left in letterbox.
7	3 Station Street	██████████████	██████████		N	Specific notification and SWMY slip left in letterbox.
8	3 Station Street	██████████████	██████████ ██████████	██████████████████	N	Specific notification and SWMY slip left in letterbox.
9	3 Station Street	██████████████	██████████		N	Specific notification and SWMY slip left in letterbox.

10	3 Station Street	██████			N	Specific notification and SWMY slip left in letterbox.
11	3 Station Street	██████████	██████████		N	Specific notification and SWMY slip left in letterbox.
12	3 Station Street	██████████	██████████	██████████████████	N	Specific notification and SWMY slip left in letterbox.
13	3 Station Street	██			Y	No comments or feedback on out-of-hours deliveries to date, nor issues with the proposed tower crane installation activities.
14	3 Station Street	██████████	██████████	██████████████████	Y	No comments or feedback on out-of-hours deliveries to date, nor issues with the proposed tower crane installation activities
15	3 Station Street	██████████	██████████		N	Notes in CM are that the stakeholder does not own a car. Also does not want to be notified of upcoming work or OOHW. Specific notification and SWMY slip left in letterbox.
16	3 Station Street	██████████	██████████	██████████████████	N	Specific notification and SWMY slip left in letterbox.

17	3 Station Street	[REDACTED]	[REDACTED]	[REDACTED]	N	Specific notification and SWMY slip left in letterbox.
18	3 Station Street	[REDACTED]		[REDACTED]	N	Specific notification and SWMY slip left in letterbox.
19	3 Station Street	[REDACTED]			N	Specific notification and SWMY slip left in letterbox.
	4 Chesham Street	[REDACTED]	[REDACTED]	[REDACTED]	N	Specific notification and SWMY slip left in letterbox.
A	3 Chesham Street	[REDACTED]	[REDACTED]	[REDACTED]	Y	No comments or feedback on out-of-hours deliveries to date, nor issues with the proposed tower crane installation activities.
B	3 Chesham Street	[REDACTED]	[REDACTED]		Y	No comments or feedback on out-of-hours deliveries to date, nor issues with the proposed tower crane installation activities. Stakeholder did comment that works and impacts had been much less since PLM took over site.
A	2 Chesham Street	[REDACTED]			Y	No comments or feedback on out-of-hours deliveries to date, nor issues with the proposed tower crane installation activities.

						Stakeholder did comment that works and impacts had been much less since PLM took over site.
B	2 Chesham Street	██████████		████████████████████	Y	No comments or feedback on out-of-hours deliveries to date, nor issues with the proposed tower crane installation activities.
	1 Chesham Street	██████████			N	Specific notification and SWMY slip left in letterbox.
A	1 Chesham Street	██████████			N	Specific notification and SWMY slip left in letterbox.
1A	34-36 Phillip Street	██			Y	No comments or feedback on out-of-hours deliveries to date, nor issues with the proposed tower crane installation activities. Stakeholder did comment that works and impacts had been much less since PLM took over site, however stakeholder advised the street water cart from the tunnelling contractor is noisy, advised we would pass feedback onto the tunnelling contractor.
1B	34-36 Phillip Street	██	██████████		Y	No comments or feedback on out-of-hours deliveries to date, nor issues with the proposed tower crane installation activities.

						Stakeholder has two cars, and only one car spot in the garage downstairs, PLM advised we would facilitate one car space within the road closure to ensure a car space is available nearby during the work.
1C	34-36 Phillip Street	██████████	██████████		N	Specific notification and SWMY slip left in letterbox.
2A	34-36 Phillip Street	██████			Y	No comments or feedback on out-of-hours deliveries to date, nor issues with the proposed tower crane installation activities.
2B	34-36 Phillip Street	██████████	██████████	████████████████████	N	Specific notification and SWMY slip left in letterbox.
2C	34-36 Phillip Street	██████████	██████████	████████████████████	N	Specific notification and SWMY slip left in letterbox.
3A	34-36 Phillip Street	██████			N	Specific notification and SWMY slip left in letterbox.
3B	34-36 Phillip Street	████	██████████		N	Specific notification and SWMY slip left in letterbox.

3C	34-36 Phillip Street	██████	██████████		N	Specific notification and SWMY slip left in letterbox.
4A	34-36 Phillip Street	██████			N	Specific notification and SWMY slip left in letterbox.
4B	34-36 Phillip Street	██████			N	Specific notification and SWMY slip left in letterbox.
4C	34-36 Phillip Street	██████			N	Specific notification and SWMY slip left in letterbox.
5A	34-36 Phillip Street	██████			Y	No comments or feedback on out-of-hours deliveries to date, nor issues with the proposed tower crane installation activities.
5B	34-36 Phillip Street	██████████	██████████	██████████████████	N	Specific notification and SWMY slip left in letterbox.
5C	34-36 Phillip Street	██████			N	Specific notification and SWMY slip left in letterbox.
6A	34-36 Phillip Street	██████			Y	No comments or feedback on out-of-hours deliveries to date, nor issues with

						the proposed tower crane installation activities.
6B	34-36 Phillip Street	██████			N	Specific notification and SWMY slip left in letterbox.
6C	34-36 Phillip Street	██████			N	Specific notification and SWMY slip left in letterbox.
	29 Phillip Street	██████			N	Property seems to be vacant. Specific notification and SWMY slip left in letterbox.
	32 Phillip Street	████	██████████		Y	No comments or feedback on out-of-hours deliveries to date, nor issues with the proposed tower crane installation activities. PLM advised we would facilitate one car space within the road closure to ensure a car space is available nearby during the work.
	28 Phillip Street	██████			N	Specific notification and SWMY slip left in letterbox.
	17 Phillip Street	██████████	██████████		N	Specific notification and SWMY slip left in letterbox.

	19 Phillip Street	██████			N	Property seems to be vacant. Specific notification and SWMY slip left in letterbox.
	7 Lethbridge Street	██████			Y	No comments or feedback on out-of-hours deliveries to date, nor issues with the proposed tower crane installation activities. Stakeholder did comment that works and impacts had been much less since PLM took over site.
	9 Lethbridge Street	██████			N	Specific notification and SWMY slip left in letterbox.
	11 Lethbridge Street	██████			N	Specific notification and SWMY slip left in letterbox.
	6 Ross Place	██████			N	Property seems to be vacant. Specific notification and SWMY slip left in letterbox.
	8 Ross Place	██████			N	Unable to gain access – aggressive dog. Specific notification and SWMY slip left in letterbox.
1	10-14 Ross Place	██████	██████		Y	No comments or feedback on out-of-hours deliveries to date, nor issues with the proposed tower crane installation activities.

2	10-14 Ross Place	██████	██████		N	Specific notification and SWMY slip left in letterbox.
3	10-14 Ross Place	██████	██████		Y	<p>No comments or feedback on out-of-hours deliveries to date, nor issues with the proposed tower crane installation activities.</p> <p>Note – two cars, son parks on Ross Place, mother parks in the driveway. Advised that driveway will still be accessible during tower crane installation road closures, just look for the traffic control to guide safely in and out.</p>
4	10-14 Ross Place	██████	██████		Y	No comments or feedback on out-of-hours deliveries to date, nor issues with the proposed tower crane installation activities.
5	10-14 Ross Place	██████	██████		Y	<p>Stakeholder provided feedback on noise and vibrations during the excavation works, noted that impacts are significantly less since the station works have begun, with no feedback to provide on PLM works to date.</p> <p>Stakeholder also advised that they would stay home during the tower crane installation as they generally don't leave the house on Sundays.</p>

6	10-14 Ross Place	██████	██████		Y	No comments or feedback on out-of-hours deliveries to date, nor issues with the proposed tower crane installation activities.
7	10-14 Ross Place	██████	██████		N	Specific notification and SWMY slip left in letterbox.
8	10-14 Ross Place	██████	██████		N	Specific notification and SWMY slip left in letterbox.
9	10-14 Ross Place	██████	██████		N	Specific notification and SWMY slip left in letterbox.
10	10-14 Ross Place	██████	██████		N	Specific notification and SWMY slip left in letterbox.
11	10-14 Ross Place	██████	██████		N	Specific notification and SWMY slip left in letterbox.
12	10-14 Ross Place	██████	██████		Y	No comments or feedback on out-of-hours deliveries to date, nor issues with the proposed tower crane installation activities.

	16 Ross Place	██████			N	Specific notification and SWMY slip left in letterbox.
	17 Ross Place	██████			Y	<p>No comments or feedback on out-of-hours deliveries to date, nor issues with the proposed tower crane installation activities.</p> <p>Stakeholder did comment that works and impacts had been much less since PLM took over site.</p>
Businesses and sensitive receivers						
	24 Phillip Street	██████████	██████████		Y	<p>No comments or feedback on out-of-hours deliveries to date, nor issues with the proposed tower crane installation activities.</p> <p>Stakeholder advised they do not operate on Sundays so the road closures will not impact their business.</p>
	30 Phillip Street	██████████	██████████		Y	<p>No comments or feedback on out-of-hours deliveries to date, nor issues with the proposed tower crane installation activities.</p> <p>Stakeholder advised they do not operate on Sundays so the road closures will not impact their business.</p>

1	40 Phillip Street	[REDACTED]	[REDACTED]		Y	<p>No comments or feedback on out-of-hours deliveries to date, nor issues with the proposed tower crane installation activities.</p> <p>Stakeholder advised that as long as people can access their shop front by foot, the works do not impact them.</p>
2	40 Phillip Street	[REDACTED]	[REDACTED]	[REDACTED]	Y	<p>No comments or feedback on the proposed tower crane installation activities/pedestrian detours and footpath closures.</p> <p>No feedback on work activities to date.</p> <p>Store owner thanked PLM for visiting.</p>
3A & 3B	40 Phillip Street	[REDACTED]	[REDACTED]	[REDACTED]	Y	<p>No comments or feedback on out-of-hours deliveries to date, nor issues with the proposed tower crane installation activities.</p> <p>Stakeholder advised they do not operate on Sundays so the road closures will not impact their business.</p>
4	40 Phillip Street	[REDACTED]	[REDACTED]	[REDACTED]	Y	<p>No comments or feedback on out-of-hours deliveries to date, nor issues with the proposed tower crane installation activities.</p> <p>Stakeholder advised they do not operate on Sundays so the road closures will not impact their business.</p>
6	40 Phillip Street	[REDACTED]			N	<p>Specific notification and SWMY slip left under front door.</p>

	47 Phillip Street	██████████			N	Letterbox distribution area
	51 Phillip Street	██████████	██████████		Y	<p>No comments or feedback on out-of-hours deliveries to date, nor issues with the proposed tower crane installation activities.</p> <p>Stakeholder advised they do not operate on Sundays so the road closures will not impact their business.</p>
3	51 Phillip Street	██████████	██████████		N	Attempted to call on 2 occasions, no answer.

Appendix B Communication materials

MONTHLY CONSTRUCTION UPDATE

Sydney Metro – Western Sydney Airport

Notification – St Marys Metro Station

25 March 2024

Sydney Metro is Australia's biggest public transport project.

Sydney Metro – Western Sydney Airport is the new metro railway line which will service Greater Western Sydney and the new Western Sydney International (Nancy-Bird Walton) Airport. A city-shaping project, the 23-kilometre new railway will connect the Western Sydney Aerotropolis in the south with St Marys in the north – where customers can connect to the existing Sydney Trains suburban T1 Western Line. The NSW and Australian governments have a shared objective of having Sydney Metro – Western Sydney Airport operational when the airport opens for passenger services.

Parklife Metro consortium are delivering the Stations, Systems, Trains, Operations and Maintenance (SSTOM) works contract for Sydney Metro – Western Sydney Airport.

April work activity includes:

- Ongoing deliveries of machinery, equipment, and materials
- Formwork, steel fixing, and concrete pours inside the station box
- Tower crane installation, including constructing the towers and boom
- Surveying and geotechnical investigation activities, including potholing and testing
- Site photography, including using drone camera above the construction site
- Please refer to map overleaf showing work locations.

Out-of-hours work activity includes:

- Installation of a tower crane. Local road closures will be required out-of-hours, to safely lift the 145-metre boom into place
- Ongoing deliveries of over-sized equipment and machinery
- Extended work hours for large concrete pours and concrete finishing works inside the station box.
- Ongoing deliveries of over-sized equipment and machinery

Preparation for tunnel boring machine retrieval:

- CPB Contractors Ghella (CPBG), who are completing the station boxes and tunnelling works for Sydney Metro – Western Sydney Airport, will also be carrying out work at the St Marys site, in preparation for tunnel boring machine retrievals over the coming months.
- CPBG will also be carrying out out-of-hours work at the St Marys site **24 hours a day, seven days a week**. Please see notification **SBT0136a** for further information.

What to expect and managing impacts:

- Work and equipment used in these work activities may generate some noise, vibration, and dust
- Mitigation measures will be in place to minimise impacts including installing noise blankets, where feasible, respite periods during high noise activities, noise and vibration monitoring, and water carts for dust suppression
- Increased light and heavy vehicle movements on surrounding roads, and local road closures. All vehicles will be turned off when not in use, non-tonal reversing alarms will be fitted to plant and machinery and trucks will avoid reversing into and on site, where feasible



Subscribe for updates at sydneymetrowsa@transport.nsw.gov.au <https://www.sydneymetro.info/privacy-policy> PLM00030



- Temporary lighting to ensure a safe worksite will be directed away from properties
- Communication will be limited to radios only when moving and unloading equipment, with no use of horns or loud radios
- Traffic control and signage to safely assist motorists, pedestrians, and cyclists
- Most of our work will be completed during standard construction hours **Monday to Friday, 7am to 6pm and Saturday, 8am to 1pm**
- Out-of-hours work activities will be carried out to mitigate quality and safety risks, and in line with the project Environment Protection Licence, Road Occupancy Licences, and Transport for NSW requirements.
- Impacted surrounding residents and businesses will be notified in advance of any out-of-hours work.

Three monthly lookahead of out-of-hours activities:

Activity	Equipment	Work hours	Timing
Oversized plant and equipment deliveries	Traffic management, light and heavy vehicles, generators, lighting towers and mobile cranes	10pm to 7am, Monday to Friday	Ongoing - 2024
Concrete pours station box base slab and walls	Concrete pump, vibrators, concrete trucks, generators and lighting towers	6pm to 9pm, Monday to Friday 1pm to 4pm, Saturdays	April - June 2024
Concrete finishing works inside the station box	Power floats, concrete screed, vibrators, hand tools, generators and lighting towers	6pm to 10pm, Monday to Friday 1pm to 4pm, Saturdays	April - June 2024
145 metre tall tower crane installation <i>Impacted surrounding residents and businesses will be notified in advance of this work.</i>	Traffic management, light and heavy vehicles, generators, deliveries of tower crane components, mobile cranes, drills, hand tools and lighting towers.	Out-of-hours deliveries of tower crane components 10pm to 5am, Monday to Friday	Monday 15 April to Saturday 20 April 2024. <i>Contingency dates: Monday 22 April to Saturday 27 April 2024.</i>
		Tower crane boom installation, 7am to 1pm, Sunday	Sunday 21 April 2024. <i>Contingency date Sunday 28 April 2024.</i>

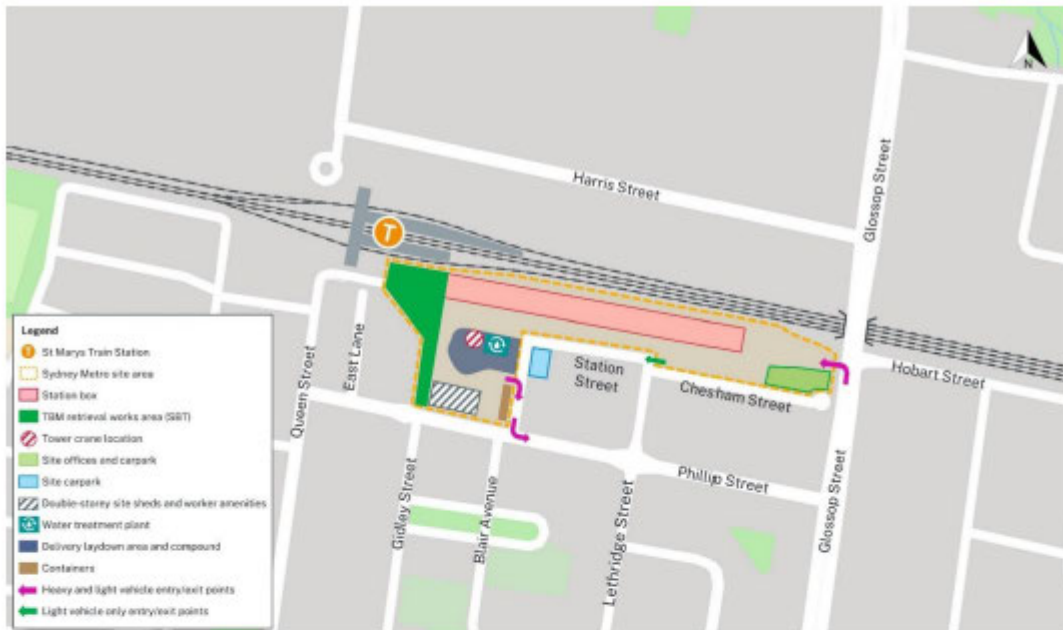
Equipment used:

Equipment used will include, but is not limited to, tower cranes, excavators, elevated work platforms, franna cranes, mobile cranes, forklifts and manitous, concrete pumps and concrete trucks, concrete vibrators water carts, jackhammers, compaction equipment, power generators, vacuum trucks, dewatering pump, handheld and tools, lighting towers, light and heavy vehicles, and traffic management.



Subscribe for updates at sydneymetrowsa@transport.nsw.gov.au <https://www.sydneymetro.info/privacy-policy> PLM00030

St Marys Metro Station work area:



Contact us:

Please contact Jess, the dedicated Place Manager from the Parklife Metro community team on **1800 717 703** or email sydneymetrowsa@transport.nsw.gov.au if you have any questions or would like to provide feedback about the work, including appropriate respite periods.

A Detailed Noise and Vibration Impact Statement (DNVIS) has been prepared, including proposed mitigation measures as a result of noise modelling. We invite your feedback if alternative measures may be required for your specific circumstances. To provide feedback, please contact the Parklife Metro Community Team.

Feedback:

Our Community Engagement Strategy is now online, and we are inviting feedback from the community. Please visit www.parklifemetro.com.au/SSTOMCCS to view the document and provide any feedback. We value your input regarding our communications approach and engagement.

Thank you for your cooperation while we complete this essential work.

Contact us



24-hour Community Information Line **1800 717 703**



sydneymetrowsa@transport.nsw.gov.au



Sydney Metro – Western Sydney Airport,
PO Box K659, Haymarket NSW 1240



Access information in over 100 languages
Download Sydney Metro Connect from the
App store or get it on Google Play.



Translating and interpreting service

If you need help understanding this information, please contact the Translating and Interpreting Service on **131 450** and ask them to call us on **1800 717 703**.

Out-of-hours work - St Marys Metro Station

Friday 1 March 2024

We will be undertaking out-of-hours work (OOHW) to remove oversized equipment and machinery from the St Marys Metro Station site.

As we are nearing completion of piling works, we will require **two shifts** to remove our machinery from the station box and take off site. This work will occur between **Monday 11 March and Friday 15 March 2024**, weather and site conditions permitting. If our work cannot occur due to wet weather, it will be rescheduled to the next dry weather evening the following week. Our work hours will be between **10pm and 7am**.

Due to the size of the equipment and machinery, this work will be carried out at night when there is approval to occupy the roadway, to minimise traffic disruption, and reduce safety risks to workers and road users. We will take every step possible to minimise noise impacts, however there will be times when the work may be intermittently noisy. Mitigation measures will be in place to minimise these impacts, including noise monitoring during our work.

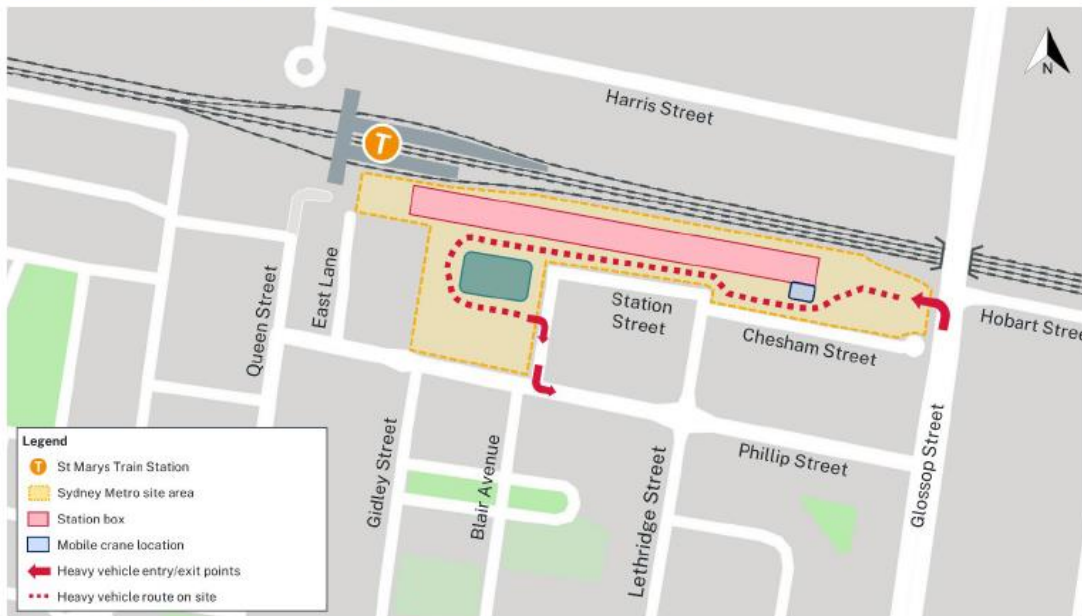
Please contact Jess, the dedicated Place Manager from the Parklife Metro community team on **1800 717 703** or email sydneymetrowsa@transport.nsw.gov.au if you have any questions or would like to provide feedback about the work.

Thank you for your patience during this essential work.



Sydney Metro – Western Sydney Airport – PLM00025.01

Out-of-hours work location:



Access information in over 100 languages

Download Sydney Metro Connect from the App store or get it on Google Play.

Sydney Metro – Western Sydney Airport – PLM00025.01

Appendix C Conditions of Approval (SSI 10051)

Conditions of Approval relevant to this Consultation Report.

Reference	Description	How is this addressed
E57	<p>Out-of-hours work – Community consultation on respite</p> <p>In order to undertake out-of-hours work outside the work hours specified under Condition E38, appropriate respite periods for the out-of-hours work must be identified in consultation with the community at each affected location on a regular basis. This consultation must include (but not be limited to) providing the community with:</p>	This document.
	(a) a progressive schedule for periods no less than three (3) months, of likely out-of-hours work;	Section 3. Appendix B
	(b) a description of the potential work, location and duration of the out-of-hours work;	Section 3.1 Appendix B
	(c) the noise characteristics and likely noise levels of the work; and	Section 2.3 Section 3.4 (Figure 3) Appendix B
	(d) likely mitigation and management measures which aim to achieve the relevant NMLs under Condition E43 (including the circumstances of when respite or relocation offers will be available and details about how the affected community can access these offers).	Section 2.2 Section 2.3 Appendix B
	<p>The outcomes of the community consultation, the identified respite periods and the scheduling of the likely out-of-hour work must be provided to the ER, EPA and the Planning Secretary prior to the out-of-hours work commencing.</p> <p><i>Note: Respite periods can be any combination of days or hours where out-of-hours work would not be more than 5 dB(A) above the RBL at any residence.</i></p>	This report.

Appendix D Distribution list 200m radius of site

General out-of-hours work distribution area.

Unit	Street Number (from)	Street Number (to)	Street Name	Street Type	Suburb	State	Post Code	Residential	Non-residential	Feedback received
	2	0	ACACIA	AVE	ST MARYS	NSW	2760	Y	N	N
	4	0	ACACIA	AVE	ST MARYS	NSW	2760	Y	N	N
	6	0	ACACIA	AVE	ST MARYS	NSW	2760	Y	N	N
	8	0	ACACIA	AVE	ST MARYS	NSW	2760	Y	N	N
	10	0	ACACIA	AVE	ST MARYS	NSW	2760	Y	N	N
	12	0	ACACIA	AVE	ST MARYS	NSW	2760	Y	N	N
	14	0	ACACIA	AVE	ST MARYS	NSW	2760	Y	N	N
	16	0	ACACIA	AVE	ST MARYS	NSW	2760	Y	N	N
	18	0	ACACIA	AVE	ST MARYS	NSW	2760	Y	N	N
	20	0	ACACIA	AVE	ST MARYS	NSW	2760	Y	N	N
	1	0	AUSTRALIA	ST	ST MARYS	NSW	2760	Y	N	N
	2	0	AUSTRALIA	ST	ST MARYS	NSW	2760	Y	N	N
3	3	0	AUSTRALIA	ST	ST MARYS	NSW	2760	Y	N	N
2	3	0	AUSTRALIA	ST	ST MARYS	NSW	2760	Y	N	N
1	3	0	AUSTRALIA	ST	ST MARYS	NSW	2760	Y	N	N
	3	0	AUSTRALIA	ST	ST MARYS	NSW	2760	Y	N	N
5	3	0	AUSTRALIA	ST	ST MARYS	NSW	2760	Y	N	N
6	3	0	AUSTRALIA	ST	ST MARYS	NSW	2760	Y	N	N
4	3	0	AUSTRALIA	ST	ST MARYS	NSW	2760	Y	N	N
	4	0	AUSTRALIA	ST	ST MARYS	NSW	2760	Y	N	N
1	5	0	AUSTRALIA	ST	ST MARYS	NSW	2760	Y	N	N
6	5	0	AUSTRALIA	ST	ST MARYS	NSW	2760	Y	N	N
3	5	0	AUSTRALIA	ST	ST MARYS	NSW	2760	Y	N	N
5	5	0	AUSTRALIA	ST	ST MARYS	NSW	2760	Y	N	N
	5	0	AUSTRALIA	ST	ST MARYS	NSW	2760	Y	N	N
2	5	0	AUSTRALIA	ST	ST MARYS	NSW	2760	Y	N	N
4	5	0	AUSTRALIA	ST	ST MARYS	NSW	2760	Y	N	N
	7	0	AUSTRALIA	ST	ST MARYS	NSW	2760	Y	N	N
	7	0	AUSTRALIA	ST	ST MARYS	NSW	2760	Y	N	N
	9	0	AUSTRALIA	ST	ST MARYS	NSW	2760	Y	N	N
	9	0	AUSTRALIA	ST	ST MARYS	NSW	2760	Y	N	N
2	11	0	AUSTRALIA	ST	ST MARYS	NSW	2760	Y	N	N
	11	0	AUSTRALIA	ST	ST MARYS	NSW	2760	Y	N	N
3	11	0	AUSTRALIA	ST	ST MARYS	NSW	2760	Y	N	N
5	11	0	AUSTRALIA	ST	ST MARYS	NSW	2760	Y	N	N
1	11	0	AUSTRALIA	ST	ST MARYS	NSW	2760	Y	N	N
4	11	0	AUSTRALIA	ST	ST MARYS	NSW	2760	Y	N	N
	13	0	AUSTRALIA	ST	ST MARYS	NSW	2760	Y	N	N

Unit	Street Number (from)	Street Number (to)	Street Name	Street Type	Suburb	State	Post Code	Residential	Non-residential	Feedback received
3	13	0	AUSTRALIA	ST	ST MARYS	NSW	2760	Y	N	N
6	13	0	AUSTRALIA	ST	ST MARYS	NSW	2760	Y	N	N
9	13	0	AUSTRALIA	ST	ST MARYS	NSW	2760	Y	N	N
1	13	0	AUSTRALIA	ST	ST MARYS	NSW	2760	Y	N	N
7	13	0	AUSTRALIA	ST	ST MARYS	NSW	2760	Y	N	N
4	13	0	AUSTRALIA	ST	ST MARYS	NSW	2760	Y	N	N
5	13	0	AUSTRALIA	ST	ST MARYS	NSW	2760	Y	N	N
2	13	0	AUSTRALIA	ST	ST MARYS	NSW	2760	Y	N	N
8	13	0	AUSTRALIA	ST	ST MARYS	NSW	2760	Y	N	N
	15	0	AUSTRALIA	ST	ST MARYS	NSW	2760	Y	N	N
2	15	0	AUSTRALIA	ST	ST MARYS	NSW	2760	Y	N	N
4	15	0	AUSTRALIA	ST	ST MARYS	NSW	2760	Y	N	N
9	15	0	AUSTRALIA	ST	ST MARYS	NSW	2760	Y	N	N
3	15	0	AUSTRALIA	ST	ST MARYS	NSW	2760	Y	N	N
1	15	0	AUSTRALIA	ST	ST MARYS	NSW	2760	Y	N	N
10	15	0	AUSTRALIA	ST	ST MARYS	NSW	2760	Y	N	N
8	15	0	AUSTRALIA	ST	ST MARYS	NSW	2760	Y	N	N
6	15	0	AUSTRALIA	ST	ST MARYS	NSW	2760	Y	N	N
7	15	0	AUSTRALIA	ST	ST MARYS	NSW	2760	Y	N	N
5	15	0	AUSTRALIA	ST	ST MARYS	NSW	2760	Y	N	N
2	17	0	AUSTRALIA	ST	ST MARYS	NSW	2760	Y	N	N
11	17	0	AUSTRALIA	ST	ST MARYS	NSW	2760	Y	N	N
5	17	0	AUSTRALIA	ST	ST MARYS	NSW	2760	Y	N	N
8	17	0	AUSTRALIA	ST	ST MARYS	NSW	2760	Y	N	N
9	17	0	AUSTRALIA	ST	ST MARYS	NSW	2760	Y	N	N
	17	0	AUSTRALIA	ST	ST MARYS	NSW	2760	Y	N	N
3	17	0	AUSTRALIA	ST	ST MARYS	NSW	2760	Y	N	N
1	17	0	AUSTRALIA	ST	ST MARYS	NSW	2760	Y	N	N
4	17	0	AUSTRALIA	ST	ST MARYS	NSW	2760	Y	N	N
12	17	0	AUSTRALIA	ST	ST MARYS	NSW	2760	Y	N	N
10	17	0	AUSTRALIA	ST	ST MARYS	NSW	2760	Y	N	N
7	17	0	AUSTRALIA	ST	ST MARYS	NSW	2760	Y	N	N
6	17	0	AUSTRALIA	ST	ST MARYS	NSW	2760	Y	N	N
1	19	0	AUSTRALIA	ST	ST MARYS	NSW	2760	Y	N	N
2	19	0	AUSTRALIA	ST	ST MARYS	NSW	2760	Y	N	N
4	19	0	AUSTRALIA	ST	ST MARYS	NSW	2760	Y	N	N
	19	0	AUSTRALIA	ST	ST MARYS	NSW	2760	Y	N	N
5	19	0	AUSTRALIA	ST	ST MARYS	NSW	2760	Y	N	N

Unit	Street Number (from)	Street Number (to)	Street Name	Street Type	Suburb	State	Post Code	Residential	Non-residential	Feedback received
3	19	0	AUSTRALIA	ST	ST MARYS	NSW	2760	Y	N	N
	21	0	AUSTRALIA	ST	ST MARYS	NSW	2760	Y	N	N
3	21	0	AUSTRALIA	ST	ST MARYS	NSW	2760	Y	N	N
4	21	0	AUSTRALIA	ST	ST MARYS	NSW	2760	Y	N	N
6	21	0	AUSTRALIA	ST	ST MARYS	NSW	2760	Y	N	N
5	21	0	AUSTRALIA	ST	ST MARYS	NSW	2760	Y	N	N
2	21	0	AUSTRALIA	ST	ST MARYS	NSW	2760	Y	N	N
1	21	0	AUSTRALIA	ST	ST MARYS	NSW	2760	Y	N	N
	23	0	AUSTRALIA	ST	ST MARYS	NSW	2760	Y	N	N
	25	0	AUSTRALIA	ST	ST MARYS	NSW	2760	Y	N	N
	27	0	AUSTRALIA	ST	ST MARYS	NSW	2760	Y	N	N
	2	0	BELAR	ST	ST MARYS	NSW	2760	N	Y	N
	5	0	BLAIR	AVE	ST MARYS	NSW	2760	Y	N	N
2	6	10	BLAIR	AVE	ST MARYS	NSW	2760	Y	N	N
1	6	10	BLAIR	AVE	ST MARYS	NSW	2760	Y	N	N
11	6	10	BLAIR	AVE	ST MARYS	NSW	2760	Y	N	N
9	6	10	BLAIR	AVE	ST MARYS	NSW	2760	Y	N	N
5	6	10	BLAIR	AVE	ST MARYS	NSW	2760	Y	N	N
6	6	10	BLAIR	AVE	ST MARYS	NSW	2760	Y	N	N
7	6	10	BLAIR	AVE	ST MARYS	NSW	2760	Y	N	N
10	6	10	BLAIR	AVE	ST MARYS	NSW	2760	Y	N	N
4	6	10	BLAIR	AVE	ST MARYS	NSW	2760	Y	N	N
	6	10	BLAIR	AVE	ST MARYS	NSW	2760	Y	N	N
8	6	10	BLAIR	AVE	ST MARYS	NSW	2760	Y	N	N
12	6	10	BLAIR	AVE	ST MARYS	NSW	2760	Y	N	N
3	6	10	BLAIR	AVE	ST MARYS	NSW	2760	Y	N	N
	7	0	BLAIR	AVE	ST MARYS	NSW	2760	Y	N	N
	9	0	BLAIR	AVE	ST MARYS	NSW	2760	Y	N	N
	11	0	BLAIR	AVE	ST MARYS	NSW	2760	Y	N	N
	12	0	BLAIR	AVE	ST MARYS	NSW	2760	Y	N	N
	14	0	BLAIR	AVE	ST MARYS	NSW	2760	Y	N	N
	16	0	BLAIR	AVE	ST MARYS	NSW	2760	Y	N	N
	18	0	BLAIR	AVE	ST MARYS	NSW	2760	Y	N	N
	20	0	BLAIR	AVE	ST MARYS	NSW	2760	Y	N	N
	20	0	BLAIR	AVE	ST MARYS	NSW	2760	Y	N	N
	167	0	BRISBANE	ST	ST MARYS	NSW	2760	Y	N	N
	169	0	BRISBANE	ST	ST MARYS	NSW	2760	Y	N	N
	171	0	BRISBANE	ST	ST MARYS	NSW	2760	Y	N	N

Unit	Street Number (from)	Street Number (to)	Street Name	Street Type	Suburb	State	Post Code	Residential	Non-residential	Feedback received
	173	0	BRISBANE	ST	ST MARYS	NSW	2760	Y	N	N
	1	0	CAMIRA	ST	ST MARYS	NSW	2760	Y	N	N
	3	0	CAMIRA	ST	ST MARYS	NSW	2760	Y	N	N
	5	0	CAMIRA	ST	ST MARYS	NSW	2760	Y	N	N
	7	0	CAMIRA	ST	ST MARYS	NSW	2760	Y	N	N
	9	0	CAMIRA	ST	ST MARYS	NSW	2760	Y	N	N
	11	0	CAMIRA	ST	ST MARYS	NSW	2760	Y	N	N
	13	0	CAMIRA	ST	ST MARYS	NSW	2760	Y	N	N
	15	0	CAMIRA	ST	ST MARYS	NSW	2760	Y	N	N
	43	0	CARINYA	AVE	ST MARYS	NSW	2760	Y	N	N
	45	0	CARINYA	AVE	ST MARYS	NSW	2760	Y	N	N
	47	0	CARINYA	AVE	ST MARYS	NSW	2760	Y	N	N
	49	0	CARINYA	AVE	ST MARYS	NSW	2760	Y	N	N
	51	0	CARINYA	AVE	ST MARYS	NSW	2760	Y	N	N
	53	0	CARINYA	AVE	ST MARYS	NSW	2760	Y	N	N
	55	0	CARINYA	AVE	ST MARYS	NSW	2760	Y	N	N
	57	0	CARINYA	AVE	ST MARYS	NSW	2760	Y	N	N
	59	0	CARINYA	AVE	ST MARYS	NSW	2760	Y	N	N
	61	0	CARINYA	AVE	ST MARYS	NSW	2760	Y	N	N
	63	0	CARINYA	AVE	ST MARYS	NSW	2760	Y	N	N
	65	67	CARINYA	AVE	ST MARYS	NSW	2760	Y	N	N
	69	0	CARINYA	AVE	ST MARYS	NSW	2760	Y	N	N
	71	0	CARINYA	AVE	ST MARYS	NSW	2760	Y	N	N
	71	0	CARINYA	AVE	ST MARYS	NSW	2760	Y	N	N
	73	0	CARINYA	AVE	ST MARYS	NSW	2760	Y	N	N
	75	0	CARINYA	AVE	ST MARYS	NSW	2760	Y	N	N
	78	0	CARINYA	AVE	ST MARYS	NSW	2760	Y	N	N
	1	0	CHAMPNESS	CRES	ST MARYS	NSW	2760	Y	N	N
	1	0	CHAMPNESS	CRES	ST MARYS	NSW	2760	Y	N	N
	2	0	CHAMPNESS	CRES	ST MARYS	NSW	2760	Y	N	N
	3	0	CHAMPNESS	CRES	ST MARYS	NSW	2760	Y	N	N
	3	0	CHAMPNESS	CRES	ST MARYS	NSW	2760	Y	N	N
	3	0	CHAMPNESS	CRES	ST MARYS	NSW	2760	Y	N	N
	4	0	CHAMPNESS	CRES	ST MARYS	NSW	2760	Y	N	N
	5	0	CHAMPNESS	CRES	ST MARYS	NSW	2760	Y	N	N
	6	0	CHAMPNESS	CRES	ST MARYS	NSW	2760	Y	N	N
	7	0	CHAMPNESS	CRES	ST MARYS	NSW	2760	Y	N	N
	8	0	CHAMPNESS	CRES	ST MARYS	NSW	2760	Y	N	N

Unit	Street Number (from)	Street Number (to)	Street Name	Street Type	Suburb	State	Post Code	Residential	Non-residential	Feedback received
	9	0	CHAMPNESS	CRES	ST MARYS	NSW	2760	Y	N	N
	10	0	CHAMPNESS	CRES	ST MARYS	NSW	2760	Y	N	N
	11	0	CHAMPNESS	CRES	ST MARYS	NSW	2760	Y	N	N
	12	0	CHAMPNESS	CRES	ST MARYS	NSW	2760	Y	N	N
	13	0	CHAMPNESS	CRES	ST MARYS	NSW	2760	Y	N	N
	14	0	CHAMPNESS	CRES	ST MARYS	NSW	2760	Y	N	N
	15	0	CHAMPNESS	CRES	ST MARYS	NSW	2760	Y	N	N
1	16	0	CHAMPNESS	CRES	ST MARYS	NSW	2760	Y	N	N
	16	0	CHAMPNESS	CRES	ST MARYS	NSW	2760	Y	N	N
	17	0	CHAMPNESS	CRES	ST MARYS	NSW	2760	Y	N	N
1	18	20	CHAMPNESS	CRES	ST MARYS	NSW	2760	Y	N	N
	18	20	CHAMPNESS	CRES	ST MARYS	NSW	2760	Y	N	N
4	18	20	CHAMPNESS	CRES	ST MARYS	NSW	2760	Y	N	N
5	18	20	CHAMPNESS	CRES	ST MARYS	NSW	2760	Y	N	N
3	18	20	CHAMPNESS	CRES	ST MARYS	NSW	2760	Y	N	N
2	18	20	CHAMPNESS	CRES	ST MARYS	NSW	2760	Y	N	N
8	18	20	CHAMPNESS	CRES	ST MARYS	NSW	2760	Y	N	N
6	18	20	CHAMPNESS	CRES	ST MARYS	NSW	2760	Y	N	N
7	18	20	CHAMPNESS	CRES	ST MARYS	NSW	2760	Y	N	N
	1	0	CHESHAM	ST	ST MARYS	NSW	2760	Y	N	N
1	1	0	CHESHAM	ST	ST MARYS	NSW	2760	Y	N	N
2	1	0	CHESHAM	ST	ST MARYS	NSW	2760	Y	N	N
	2	0	CHESHAM	ST	ST MARYS	NSW	2760	Y	N	N
	2	0	CHESHAM	ST	ST MARYS	NSW	2760	Y	N	N
	2	0	CHESHAM	ST	ST MARYS	NSW	2760	Y	N	N
	3	0	CHESHAM	ST	ST MARYS	NSW	2760	Y	N	N
	3	0	CHESHAM	ST	ST MARYS	NSW	2760	Y	N	N
	3	0	CHESHAM	ST	ST MARYS	NSW	2760	Y	N	N
	4	0	CHESHAM	ST	ST MARYS	NSW	2760	Y	N	N
	5	0	CHESHAM	ST	ST MARYS	NSW	2760	Y	N	N
	6	0	CHESHAM	ST	ST MARYS	NSW	2760	Y	N	N
	7	0	CHESHAM	ST	ST MARYS	NSW	2760	Y	N	N
	8	0	CHESHAM	ST	ST MARYS	NSW	2760	Y	N	N
1	9	0	CHESHAM	ST	ST MARYS	NSW	2760	Y	N	N
2	9	0	CHESHAM	ST	ST MARYS	NSW	2760	Y	N	N
	9	0	CHESHAM	ST	ST MARYS	NSW	2760	Y	N	N
4	9	0	CHESHAM	ST	ST MARYS	NSW	2760	Y	N	N
3	9	0	CHESHAM	ST	ST MARYS	NSW	2760	Y	N	N

Unit	Street Number (from)	Street Number (to)	Street Name	Street Type	Suburb	State	Post Code	Residential	Non-residential	Feedback received
	10	0	CHESHAM	ST	ST MARYS	NSW	2760	Y	N	N
	10	0	CHESHAM	ST	ST MARYS	NSW	2760	Y	N	N
	11	0	CHESHAM	ST	ST MARYS	NSW	2760	Y	N	N
	11	0	CHESHAM	ST	ST MARYS	NSW	2760	Y	N	N
	10	38	FORRESTER	RD	ST MARYS	NSW	2760	N	Y	N
	59	61	FORRESTER	RD	ST MARYS	NSW	2760	N	Y	N
2	65	67	FORRESTER	RD	ST MARYS	NSW	2760	N	Y	N
3	65	67	FORRESTER	RD	ST MARYS	NSW	2760	N	Y	N
1	65	67	FORRESTER	RD	ST MARYS	NSW	2760	N	Y	N
4	65	67	FORRESTER	RD	ST MARYS	NSW	2760	N	Y	N
6	65	67	FORRESTER	RD	ST MARYS	NSW	2760	N	Y	N
5	65	67	FORRESTER	RD	ST MARYS	NSW	2760	N	Y	N
7	65	67	FORRESTER	RD	ST MARYS	NSW	2760	N	Y	N
8	65	67	FORRESTER	RD	ST MARYS	NSW	2760	N	Y	N
	4	0	GIDLEY	ST	ST MARYS	NSW	2760	Y	N	N
	10	0	GIDLEY	ST	ST MARYS	NSW	2760	Y	N	N
	12	0	GIDLEY	ST	ST MARYS	NSW	2760	Y	N	N
	14	0	GIDLEY	ST	ST MARYS	NSW	2760	Y	N	N
	16	0	GIDLEY	ST	ST MARYS	NSW	2760	Y	N	N
	16	0	GIDLEY	ST	ST MARYS	NSW	2760	Y	N	N
1	84	0	GLOSSOP	ST	NORTH ST MARYS	NSW	2760	Y	N	N
2	84	0	GLOSSOP	ST	NORTH ST MARYS	NSW	2760	Y	N	N
A	84	0	GLOSSOP	ST	NORTH ST MARYS	NSW	2760	Y	N	N
	84	0	GLOSSOP	ST	NORTH ST MARYS	NSW	2760	Y	N	N
3	86	0	GLOSSOP	ST	NORTH ST MARYS	NSW	2760	Y	N	N
1	86	0	GLOSSOP	ST	NORTH ST MARYS	NSW	2760	Y	N	N
	86	0	GLOSSOP	ST	NORTH ST MARYS	NSW	2760	Y	N	N
	88	0	GLOSSOP	ST	ST MARYS	NSW	2760	Y	N	N
	88	0	GLOSSOP	ST	NORTH ST MARYS	NSW	2760	Y	N	N
	90	0	GLOSSOP	ST	NORTH ST MARYS	NSW	2760	Y	N	N
	91	0	GLOSSOP	ST	NORTH ST MARYS	NSW	2760	N	Y	N
	92	0	GLOSSOP	ST	NORTH ST MARYS	NSW	2760	Y	N	N
3	94	0	GLOSSOP	ST	NORTH ST MARYS	NSW	2760	N	Y	N
2	94	0	GLOSSOP	ST	NORTH ST MARYS	NSW	2760	N	Y	N
4	94	0	GLOSSOP	ST	NORTH ST MARYS	NSW	2760	N	Y	N
1	94	0	GLOSSOP	ST	NORTH ST MARYS	NSW	2760	N	Y	N
	94	0	GLOSSOP	ST	NORTH ST MARYS	NSW	2760	Y	N	N
	96	0	GLOSSOP	ST	ST MARYS	NSW	2760	Y	N	N

Unit	Street Number (from)	Street Number (to)	Street Name	Street Type	Suburb	State	Post Code	Residential	Non-residential	Feedback received
	97	0	GLOSSOP	ST	NORTH ST MARYS	NSW	2760	N	Y	N
	98	0	GLOSSOP	ST	ST MARYS	NSW	2760	Y	N	N
	100	0	GLOSSOP	ST	ST MARYS	NSW	2760	Y	N	N
2	102	0	GLOSSOP	ST	ST MARYS	NSW	2760	Y	N	N
	102	0	GLOSSOP	ST	ST MARYS	NSW	2760	Y	N	N
1	102	0	GLOSSOP	ST	ST MARYS	NSW	2760	Y	N	N
1	102	0	GLOSSOP	ST	ST MARYS	NSW	2760	Y	N	N
	102	0	GLOSSOP	ST	ST MARYS	NSW	2760	Y	N	N
2	102	0	GLOSSOP	ST	ST MARYS	NSW	2760	Y	N	N
	104	0	GLOSSOP	ST	ST MARYS	NSW	2760	Y	N	N
	106	0	GLOSSOP	ST	ST MARYS	NSW	2760	Y	N	N
	109	0	GLOSSOP	ST	ST MARYS	NSW	2760	Y	N	N
	110	0	GLOSSOP	ST	ST MARYS	NSW	2760	Y	N	N
9	110	0	GLOSSOP	ST	ST MARYS	NSW	2760	Y	N	N
	110	0	GLOSSOP	ST	ST MARYS	NSW	2760	Y	N	N
10	110	0	GLOSSOP	ST	ST MARYS	NSW	2760	Y	N	N
1	111	0	GLOSSOP	ST	ST MARYS	NSW	2760	Y	N	N
7	111	0	GLOSSOP	ST	ST MARYS	NSW	2760	Y	N	N
3	111	0	GLOSSOP	ST	ST MARYS	NSW	2760	Y	N	N
5	111	0	GLOSSOP	ST	ST MARYS	NSW	2760	Y	N	N
	111	0	GLOSSOP	ST	ST MARYS	NSW	2760	Y	N	N
2	111	0	GLOSSOP	ST	ST MARYS	NSW	2760	Y	N	N
6	111	0	GLOSSOP	ST	ST MARYS	NSW	2760	Y	N	N
4	111	0	GLOSSOP	ST	ST MARYS	NSW	2760	Y	N	N
1	112	0	GLOSSOP	ST	ST MARYS	NSW	2760	Y	N	N
2	112	0	GLOSSOP	ST	ST MARYS	NSW	2760	Y	N	N
	112	0	GLOSSOP	ST	ST MARYS	NSW	2760	Y	N	N
	113	0	GLOSSOP	ST	ST MARYS	NSW	2760	Y	N	N
	114	0	GLOSSOP	ST	ST MARYS	NSW	2760	Y	N	N
	115	0	GLOSSOP	ST	ST MARYS	NSW	2760	Y	N	N
	116	0	GLOSSOP	ST	ST MARYS	NSW	2760	Y	N	N
	117	0	GLOSSOP	ST	ST MARYS	NSW	2760	Y	N	N
	118	0	GLOSSOP	ST	ST MARYS	NSW	2760	Y	N	N
10	119	121	GLOSSOP	ST	ST MARYS	NSW	2760	Y	N	N
7	119	121	GLOSSOP	ST	ST MARYS	NSW	2760	Y	N	N
9	119	121	GLOSSOP	ST	ST MARYS	NSW	2760	Y	N	N
1	119	121	GLOSSOP	ST	ST MARYS	NSW	2760	Y	N	N
12	119	121	GLOSSOP	ST	ST MARYS	NSW	2760	Y	N	N

Unit	Street Number (from)	Street Number (to)	Street Name	Street Type	Suburb	State	Post Code	Residential	Non-residential	Feedback received
8	119	121	GLOSSOP	ST	ST MARYS	NSW	2760	Y	N	N
4	119	121	GLOSSOP	ST	ST MARYS	NSW	2760	Y	N	N
5	119	121	GLOSSOP	ST	ST MARYS	NSW	2760	Y	N	N
11	119	121	GLOSSOP	ST	ST MARYS	NSW	2760	Y	N	N
2	119	121	GLOSSOP	ST	ST MARYS	NSW	2760	Y	N	N
	119	121	GLOSSOP	ST	ST MARYS	NSW	2760	Y	N	N
6	119	121	GLOSSOP	ST	ST MARYS	NSW	2760	Y	N	N
3	119	121	GLOSSOP	ST	ST MARYS	NSW	2760	Y	N	N
	120	0	GLOSSOP	ST	ST MARYS	NSW	2760	Y	N	N
	1	0	HARRIS	ST	NORTH ST MARYS	NSW	2760	N	Y	N
	10	0	HARRIS	ST	NORTH ST MARYS	NSW	2760	N	Y	N
	12	0	HARRIS	ST	NORTH ST MARYS	NSW	2760	N	Y	N
	14	22	HARRIS	ST	NORTH ST MARYS	NSW	2760	N	Y	N
	17	0	HARRIS	ST	NORTH ST MARYS	NSW	2760	N	Y	N
1	17	0	HARRIS	ST	NORTH ST MARYS	NSW	2760	N	Y	N
1	19	0	HARRIS	ST	NORTH ST MARYS	NSW	2760	N	Y	N
2	19	0	HARRIS	ST	NORTH ST MARYS	NSW	2760	N	Y	N
	19	0	HARRIS	ST	NORTH ST MARYS	NSW	2760	Y	N	N
3	19	0	HARRIS	ST	NORTH ST MARYS	NSW	2760	N	Y	N
	24	28	HARRIS	ST	NORTH ST MARYS	NSW	2760	N	Y	N
	25	0	HARRIS	ST	NORTH ST MARYS	NSW	2760	N	Y	N
	39	0	HARRIS	ST	NORTH ST MARYS	NSW	2760	N	Y	N
	41	0	HARRIS	ST	NORTH ST MARYS	NSW	2760	N	Y	N
3	41	0	HARRIS	ST	NORTH ST MARYS	NSW	2760	N	Y	N
2	41	0	HARRIS	ST	NORTH ST MARYS	NSW	2760	N	Y	N
1	41	0	HARRIS	ST	NORTH ST MARYS	NSW	2760	N	Y	N
4	45	0	HARRIS	ST	NORTH ST MARYS	NSW	2760	N	Y	N
2	45	0	HARRIS	ST	NORTH ST MARYS	NSW	2760	N	Y	N
	45	0	HARRIS	ST	NORTH ST MARYS	NSW	2760	Y	N	N
1	45	0	HARRIS	ST	NORTH ST MARYS	NSW	2760	N	Y	N
3	45	0	HARRIS	ST	NORTH ST MARYS	NSW	2760	N	Y	N
7	73	0	HOBART	ST	ST MARYS	NSW	2760	Y	N	N
5	73	0	HOBART	ST	ST MARYS	NSW	2760	Y	N	N
8	73	0	HOBART	ST	ST MARYS	NSW	2760	Y	N	N
2	73	0	HOBART	ST	ST MARYS	NSW	2760	Y	N	N
1	73	0	HOBART	ST	ST MARYS	NSW	2760	Y	N	N
	73	0	HOBART	ST	ST MARYS	NSW	2760	Y	N	N
3	73	0	HOBART	ST	ST MARYS	NSW	2760	Y	N	N

Unit	Street Number (from)	Street Number (to)	Street Name	Street Type	Suburb	State	Post Code	Residential	Non-residential	Feedback received
9	73	0	HOBART	ST	ST MARYS	NSW	2760	Y	N	N
6	73	0	HOBART	ST	ST MARYS	NSW	2760	Y	N	N
4	73	0	HOBART	ST	ST MARYS	NSW	2760	Y	N	N
	75	0	HOBART	ST	ST MARYS	NSW	2760	Y	N	N
	76	0	HOBART	ST	ST MARYS	NSW	2760	Y	N	N
	82	0	HOBART	ST	ST MARYS	NSW	2760	Y	N	N
	83	0	HOBART	ST	ST MARYS	NSW	2760	Y	N	N
	37	0	KALANG	AVE	ST MARYS	NSW	2760	Y	N	N
	39	0	KALANG	AVE	ST MARYS	NSW	2760	Y	N	N
	41	0	KALANG	AVE	ST MARYS	NSW	2760	Y	N	N
	43	0	KALANG	AVE	ST MARYS	NSW	2760	Y	N	N
	47	0	KALANG	AVE	ST MARYS	NSW	2760	Y	N	N
	49	0	KALANG	AVE	ST MARYS	NSW	2760	Y	N	N
	5	0	LETHBRIDGE	ST	ST MARYS	NSW	2760	Y	N	N
	7	0	LETHBRIDGE	ST	ST MARYS	NSW	2760	Y	N	N
	9	0	LETHBRIDGE	ST	ST MARYS	NSW	2760	Y	N	N
	11	0	LETHBRIDGE	ST	ST MARYS	NSW	2760	Y	N	N
	12	0	LETHBRIDGE	ST	ST MARYS	NSW	2760	Y	N	N
3	13	17	LETHBRIDGE	ST	ST MARYS	NSW	2760	Y	N	N
2	13	17	LETHBRIDGE	ST	ST MARYS	NSW	2760	Y	N	N
	13	17	LETHBRIDGE	ST	ST MARYS	NSW	2760	Y	N	N
8	13	17	LETHBRIDGE	ST	ST MARYS	NSW	2760	Y	N	N
7	13	17	LETHBRIDGE	ST	ST MARYS	NSW	2760	Y	N	N
9	13	17	LETHBRIDGE	ST	ST MARYS	NSW	2760	Y	N	N
4	13	17	LETHBRIDGE	ST	ST MARYS	NSW	2760	Y	N	N
1	13	17	LETHBRIDGE	ST	ST MARYS	NSW	2760	Y	N	N
5	13	17	LETHBRIDGE	ST	ST MARYS	NSW	2760	Y	N	N
10	13	17	LETHBRIDGE	ST	ST MARYS	NSW	2760	Y	N	N
6	13	17	LETHBRIDGE	ST	ST MARYS	NSW	2760	Y	N	N
	14	0	LETHBRIDGE	ST	ST MARYS	NSW	2760	Y	N	N
	16	0	LETHBRIDGE	ST	ST MARYS	NSW	2760	Y	N	N
2	18	0	LETHBRIDGE	ST	ST MARYS	NSW	2760	Y	N	N
4	18	0	LETHBRIDGE	ST	ST MARYS	NSW	2760	Y	N	N
3	18	0	LETHBRIDGE	ST	ST MARYS	NSW	2760	Y	N	N
	18	0	LETHBRIDGE	ST	ST MARYS	NSW	2760	Y	N	N
1	18	0	LETHBRIDGE	ST	ST MARYS	NSW	2760	Y	N	N
	19	0	LETHBRIDGE	ST	ST MARYS	NSW	2760	Y	N	N
	21	0	LETHBRIDGE	ST	ST MARYS	NSW	2760	Y	N	N

Unit	Street Number (from)	Street Number (to)	Street Name	Street Type	Suburb	State	Post Code	Residential	Non-residential	Feedback received
	24	0	LETHBRIDGE	ST	ST MARYS	NSW	2760	Y	N	N
	2	0	MERINDA	ST	ST MARYS	NSW	2760	Y	N	N
	4	0	MERINDA	ST	ST MARYS	NSW	2760	Y	N	N
	6	0	MERINDA	ST	ST MARYS	NSW	2760	Y	N	N
	8	0	MERINDA	ST	ST MARYS	NSW	2760	Y	N	N
	10	0	MERINDA	ST	ST MARYS	NSW	2760	Y	N	N
	12	0	MERINDA	ST	ST MARYS	NSW	2760	Y	N	N
	14	0	MERINDA	ST	ST MARYS	NSW	2760	Y	N	N
	16	0	MERINDA	ST	ST MARYS	NSW	2760	Y	N	N
	2	0	NARIEL	ST	ST MARYS	NSW	2760	Y	N	N
1	2	0	NARIEL	ST	ST MARYS	NSW	2760	Y	N	N
2	2	0	NARIEL	ST	ST MARYS	NSW	2760	Y	N	N
1	3	0	NARIEL	ST	ST MARYS	NSW	2760	Y	N	N
6	3	0	NARIEL	ST	ST MARYS	NSW	2760	Y	N	N
7	3	0	NARIEL	ST	ST MARYS	NSW	2760	Y	N	N
2	3	0	NARIEL	ST	ST MARYS	NSW	2760	Y	N	N
12	3	0	NARIEL	ST	ST MARYS	NSW	2760	Y	N	N
11	3	0	NARIEL	ST	ST MARYS	NSW	2760	Y	N	N
3	3	0	NARIEL	ST	ST MARYS	NSW	2760	Y	N	N
9	3	0	NARIEL	ST	ST MARYS	NSW	2760	Y	N	N
4	3	0	NARIEL	ST	ST MARYS	NSW	2760	Y	N	N
10	3	0	NARIEL	ST	ST MARYS	NSW	2760	Y	N	N
5	3	0	NARIEL	ST	ST MARYS	NSW	2760	Y	N	N
	3	0	NARIEL	ST	ST MARYS	NSW	2760	Y	N	N
15	3	0	NARIEL	ST	ST MARYS	NSW	2760	Y	N	N
8	3	0	NARIEL	ST	ST MARYS	NSW	2760	Y	N	N
13	3	0	NARIEL	ST	ST MARYS	NSW	2760	Y	N	N
14	3	0	NARIEL	ST	ST MARYS	NSW	2760	Y	N	N
	4	0	NARIEL	ST	ST MARYS	NSW	2760	Y	N	N
	5	0	NARIEL	ST	ST MARYS	NSW	2760	Y	N	N
	6	0	NARIEL	ST	ST MARYS	NSW	2760	Y	N	N
	7	0	NARIEL	ST	ST MARYS	NSW	2760	Y	N	N
	8	0	NARIEL	ST	ST MARYS	NSW	2760	Y	N	N
	9	0	NARIEL	ST	ST MARYS	NSW	2760	Y	N	N
	10	0	NARIEL	ST	ST MARYS	NSW	2760	Y	N	N
	11	0	NARIEL	ST	ST MARYS	NSW	2760	Y	N	N
	12	0	NARIEL	ST	ST MARYS	NSW	2760	Y	N	N
	13	0	NARIEL	ST	ST MARYS	NSW	2760	Y	N	N

Unit	Street Number (from)	Street Number (to)	Street Name	Street Type	Suburb	State	Post Code	Residential	Non-residential	Feedback received
	14	0	NARIEL	ST	ST MARYS	NSW	2760	Y	N	N
	15	0	NARIEL	ST	ST MARYS	NSW	2760	Y	N	N
	16	0	NARIEL	ST	ST MARYS	NSW	2760	Y	N	N
	25	0	NARIEL	ST	ST MARYS	NSW	2760	N	Y	N
	25	0	NARIEL	ST	ST MARYS	NSW	2760	N	Y	N
	25	0	NARIEL	ST	ST MARYS	NSW	2760	N	Y	N
	1	0	PHILLIP	ST	ST MARYS	NSW	2760	Y	N	N
	2	0	PHILLIP	ST	ST MARYS	NSW	2760	Y	N	N
	3	0	PHILLIP	ST	ST MARYS	NSW	2760	Y	N	N
	4	0	PHILLIP	ST	ST MARYS	NSW	2760	Y	N	N
	5	0	PHILLIP	ST	ST MARYS	NSW	2760	Y	N	N
	6	0	PHILLIP	ST	ST MARYS	NSW	2760	Y	N	N
	7	0	PHILLIP	ST	ST MARYS	NSW	2760	Y	N	N
	8	0	PHILLIP	ST	ST MARYS	NSW	2760	Y	N	N
	9	0	PHILLIP	ST	ST MARYS	NSW	2760	Y	N	N
	10	0	PHILLIP	ST	ST MARYS	NSW	2760	Y	N	N
10	11	0	PHILLIP	ST	ST MARYS	NSW	2760	Y	N	N
20	11	0	PHILLIP	ST	ST MARYS	NSW	2760	Y	N	N
3	11	0	PHILLIP	ST	ST MARYS	NSW	2760	Y	N	N
18	11	0	PHILLIP	ST	ST MARYS	NSW	2760	Y	N	N
9	11	0	PHILLIP	ST	ST MARYS	NSW	2760	Y	N	N
19	11	0	PHILLIP	ST	ST MARYS	NSW	2760	Y	N	N
35	11	0	PHILLIP	ST	ST MARYS	NSW	2760	Y	N	N
37	11	0	PHILLIP	ST	ST MARYS	NSW	2760	Y	N	N
31	11	0	PHILLIP	ST	ST MARYS	NSW	2760	Y	N	N
43	11	0	PHILLIP	ST	ST MARYS	NSW	2760	Y	N	N
14	11	0	PHILLIP	ST	ST MARYS	NSW	2760	Y	N	N
48	11	0	PHILLIP	ST	ST MARYS	NSW	2760	Y	N	N
	11	0	PHILLIP	ST	ST MARYS	NSW	2760	Y	N	N
13	11	0	PHILLIP	ST	ST MARYS	NSW	2760	Y	N	N
39	11	0	PHILLIP	ST	ST MARYS	NSW	2760	Y	N	N
45	11	0	PHILLIP	ST	ST MARYS	NSW	2760	Y	N	N
40	11	0	PHILLIP	ST	ST MARYS	NSW	2760	Y	N	N
22	11	0	PHILLIP	ST	ST MARYS	NSW	2760	Y	N	N
15	11	0	PHILLIP	ST	ST MARYS	NSW	2760	Y	N	N
30	11	0	PHILLIP	ST	ST MARYS	NSW	2760	Y	N	N
16	11	0	PHILLIP	ST	ST MARYS	NSW	2760	Y	N	N
38	11	0	PHILLIP	ST	ST MARYS	NSW	2760	Y	N	N

Unit	Street Number (from)	Street Number (to)	Street Name	Street Type	Suburb	State	Post Code	Residential	Non-residential	Feedback received
34	11	0	PHILLIP	ST	ST MARYS	NSW	2760	Y	N	N
12	11	0	PHILLIP	ST	ST MARYS	NSW	2760	Y	N	N
36	11	0	PHILLIP	ST	ST MARYS	NSW	2760	Y	N	N
11	11	0	PHILLIP	ST	ST MARYS	NSW	2760	Y	N	N
2	11	0	PHILLIP	ST	ST MARYS	NSW	2760	Y	N	N
23	11	0	PHILLIP	ST	ST MARYS	NSW	2760	Y	N	N
4	11	0	PHILLIP	ST	ST MARYS	NSW	2760	Y	N	N
49	11	0	PHILLIP	ST	ST MARYS	NSW	2760	Y	N	N
24	11	0	PHILLIP	ST	ST MARYS	NSW	2760	Y	N	N
44	11	0	PHILLIP	ST	ST MARYS	NSW	2760	Y	N	N
47	11	0	PHILLIP	ST	ST MARYS	NSW	2760	Y	N	N
6	11	0	PHILLIP	ST	ST MARYS	NSW	2760	Y	N	N
28	11	0	PHILLIP	ST	ST MARYS	NSW	2760	Y	N	N
27	11	0	PHILLIP	ST	ST MARYS	NSW	2760	Y	N	N
8	11	0	PHILLIP	ST	ST MARYS	NSW	2760	Y	N	N
32	11	0	PHILLIP	ST	ST MARYS	NSW	2760	Y	N	N
41	11	0	PHILLIP	ST	ST MARYS	NSW	2760	Y	N	N
21	11	0	PHILLIP	ST	ST MARYS	NSW	2760	Y	N	N
1	11	0	PHILLIP	ST	ST MARYS	NSW	2760	Y	N	N
29	11	0	PHILLIP	ST	ST MARYS	NSW	2760	Y	N	N
42	11	0	PHILLIP	ST	ST MARYS	NSW	2760	Y	N	N
26	11	0	PHILLIP	ST	ST MARYS	NSW	2760	Y	N	N
5	11	0	PHILLIP	ST	ST MARYS	NSW	2760	Y	N	N
33	11	0	PHILLIP	ST	ST MARYS	NSW	2760	Y	N	N
7	11	0	PHILLIP	ST	ST MARYS	NSW	2760	Y	N	N
46	11	0	PHILLIP	ST	ST MARYS	NSW	2760	Y	N	N
17	11	0	PHILLIP	ST	ST MARYS	NSW	2760	Y	N	N
25	11	0	PHILLIP	ST	ST MARYS	NSW	2760	Y	N	N
	12	0	PHILLIP	ST	ST MARYS	NSW	2760	Y	N	N
	13	0	PHILLIP	ST	ST MARYS	NSW	2760	Y	N	N
	14	0	PHILLIP	ST	ST MARYS	NSW	2760	Y	N	N
	16	0	PHILLIP	ST	ST MARYS	NSW	2760	Y	N	N
	17	0	PHILLIP	ST	ST MARYS	NSW	2760	Y	N	N
	18	0	PHILLIP	ST	ST MARYS	NSW	2760	Y	N	N
	19	0	PHILLIP	ST	ST MARYS	NSW	2760	Y	N	N
	21	0	PHILLIP	ST	ST MARYS	NSW	2760	Y	N	N
	23	0	PHILLIP	ST	ST MARYS	NSW	2760	Y	N	N
	24	0	PHILLIP	ST	ST MARYS	NSW	2760	Y	N	N

Unit	Street Number (from)	Street Number (to)	Street Name	Street Type	Suburb	State	Post Code	Residential	Non-residential	Feedback received
	25	0	PHILLIP	ST	ST MARYS	NSW	2760	Y	N	N
	26	0	PHILLIP	ST	ST MARYS	NSW	2760	Y	N	N
	27	0	PHILLIP	ST	ST MARYS	NSW	2760	Y	N	N
	28	0	PHILLIP	ST	ST MARYS	NSW	2760	Y	N	N
	29	0	PHILLIP	ST	ST MARYS	NSW	2760	Y	N	N
	30	0	PHILLIP	ST	ST MARYS	NSW	2760	Y	N	N
2	31	0	PHILLIP	ST	ST MARYS	NSW	2760	Y	N	N
5	31	0	PHILLIP	ST	ST MARYS	NSW	2760	Y	N	N
	31	0	PHILLIP	ST	ST MARYS	NSW	2760	Y	N	N
6	31	0	PHILLIP	ST	ST MARYS	NSW	2760	Y	N	N
4	31	0	PHILLIP	ST	ST MARYS	NSW	2760	Y	N	N
3	31	0	PHILLIP	ST	ST MARYS	NSW	2760	Y	N	N
1	31	0	PHILLIP	ST	ST MARYS	NSW	2760	Y	N	N
	32	0	PHILLIP	ST	ST MARYS	NSW	2760	Y	N	N
10	33	39	PHILLIP	ST	ST MARYS	NSW	2760	N	Y	N
4	33	39	PHILLIP	ST	ST MARYS	NSW	2760	N	Y	N
17	33	39	PHILLIP	ST	ST MARYS	NSW	2760	N	Y	N
1	33	39	PHILLIP	ST	ST MARYS	NSW	2760	N	Y	N
12	33	39	PHILLIP	ST	ST MARYS	NSW	2760	N	Y	N
18	33	39	PHILLIP	ST	ST MARYS	NSW	2760	N	Y	N
2	33	39	PHILLIP	ST	ST MARYS	NSW	2760	N	Y	N
14	33	39	PHILLIP	ST	ST MARYS	NSW	2760	N	Y	N
9	33	39	PHILLIP	ST	ST MARYS	NSW	2760	N	Y	N
15	33	39	PHILLIP	ST	ST MARYS	NSW	2760	N	Y	N
5	33	39	PHILLIP	ST	ST MARYS	NSW	2760	N	Y	N
12A	33	39	PHILLIP	ST	ST MARYS	NSW	2760	N	Y	N
	33	39	PHILLIP	ST	ST MARYS	NSW	2760	N	Y	N
16	33	39	PHILLIP	ST	ST MARYS	NSW	2760	N	Y	N
7	33	39	PHILLIP	ST	ST MARYS	NSW	2760	N	Y	N
3	33	39	PHILLIP	ST	ST MARYS	NSW	2760	N	Y	N
6	33	39	PHILLIP	ST	ST MARYS	NSW	2760	N	Y	N
13	33	39	PHILLIP	ST	ST MARYS	NSW	2760	N	Y	N
8	33	39	PHILLIP	ST	ST MARYS	NSW	2760	N	Y	N
8A	33	39	PHILLIP	ST	ST MARYS	NSW	2760	N	Y	N
1B	34	36	PHILLIP	ST	ST MARYS	NSW	2760	Y	N	N
5C	34	36	PHILLIP	ST	ST MARYS	NSW	2760	Y	N	N
3B	34	36	PHILLIP	ST	ST MARYS	NSW	2760	Y	N	N
3A	34	36	PHILLIP	ST	ST MARYS	NSW	2760	Y	N	N

Unit	Street Number (from)	Street Number (to)	Street Name	Street Type	Suburb	State	Post Code	Residential	Non-residential	Feedback received
3C	34	36	PHILLIP	ST	ST MARYS	NSW	2760	Y	N	N
2B	34	36	PHILLIP	ST	ST MARYS	NSW	2760	Y	N	N
2C	34	36	PHILLIP	ST	ST MARYS	NSW	2760	Y	N	N
4C	34	36	PHILLIP	ST	ST MARYS	NSW	2760	Y	N	N
	34	36	PHILLIP	ST	ST MARYS	NSW	2760	Y	N	N
2A	34	36	PHILLIP	ST	ST MARYS	NSW	2760	Y	N	N
6A	34	36	PHILLIP	ST	ST MARYS	NSW	2760	Y	N	N
1C	34	36	PHILLIP	ST	ST MARYS	NSW	2760	Y	N	N
4A	34	36	PHILLIP	ST	ST MARYS	NSW	2760	Y	N	N
1A	34	36	PHILLIP	ST	ST MARYS	NSW	2760	Y	N	N
5A	34	36	PHILLIP	ST	ST MARYS	NSW	2760	Y	N	N
6C	34	36	PHILLIP	ST	ST MARYS	NSW	2760	Y	N	N
4B	34	36	PHILLIP	ST	ST MARYS	NSW	2760	Y	N	N
6B	34	36	PHILLIP	ST	ST MARYS	NSW	2760	Y	N	N
5B	34	36	PHILLIP	ST	ST MARYS	NSW	2760	Y	N	N
2	40	0	PHILLIP	ST	ST MARYS	NSW	2760	N	Y	N
13	40	0	PHILLIP	ST	ST MARYS	NSW	2760	N	Y	N
8B	40	0	PHILLIP	ST	ST MARYS	NSW	2760	N	Y	N
7	40	0	PHILLIP	ST	ST MARYS	NSW	2760	N	Y	N
11	40	0	PHILLIP	ST	ST MARYS	NSW	2760	N	Y	N
1	40	0	PHILLIP	ST	ST MARYS	NSW	2760	N	Y	N
6	40	0	PHILLIP	ST	ST MARYS	NSW	2760	N	Y	N
9	40	0	PHILLIP	ST	ST MARYS	NSW	2760	N	Y	N
5	40	0	PHILLIP	ST	ST MARYS	NSW	2760	N	Y	N
3	40	0	PHILLIP	ST	ST MARYS	NSW	2760	N	Y	N
	40	0	PHILLIP	ST	ST MARYS	NSW	2760	N	Y	N
10	40	0	PHILLIP	ST	ST MARYS	NSW	2760	N	Y	N
15	40	0	PHILLIP	ST	ST MARYS	NSW	2760	N	Y	N
18	40	0	PHILLIP	ST	ST MARYS	NSW	2760	N	Y	N
12	40	0	PHILLIP	ST	ST MARYS	NSW	2760	N	Y	N
4	40	0	PHILLIP	ST	ST MARYS	NSW	2760	N	Y	N
17	40	0	PHILLIP	ST	ST MARYS	NSW	2760	N	Y	N
12A	40	0	PHILLIP	ST	ST MARYS	NSW	2760	N	Y	N
16	40	0	PHILLIP	ST	ST MARYS	NSW	2760	N	Y	N
14	40	0	PHILLIP	ST	ST MARYS	NSW	2760	N	Y	N
	47	49	PHILLIP	ST	ST MARYS	NSW	2760	N	Y	N
	51	0	PHILLIP	ST	ST MARYS	NSW	2760	N	Y	N
	51	0	PHILLIP	ST	ST MARYS	NSW	2760	Y	N	N

Unit	Street Number (from)	Street Number (to)	Street Name	Street Type	Suburb	State	Post Code	Residential	Non-residential	Feedback received
1	51	0	PHILLIP	ST	ST MARYS	NSW	2760	N	Y	N
2	51	0	PHILLIP	ST	ST MARYS	NSW	2760	N	Y	N
	53	0	PHILLIP	ST	ST MARYS	NSW	2760	N	Y	N
	25	27	PLASSER	CRES	NORTH ST MARYS	NSW	2760	N	Y	N
	29	31	PLASSER	CRES	NORTH ST MARYS	NSW	2760	N	Y	N
	33	37	PLASSER	CRES	NORTH ST MARYS	NSW	2760	Y	N	N
	34	36	PLASSER	CRES	NORTH ST MARYS	NSW	2760	Y	N	N
1	34	36	PLASSER	CRES	NORTH ST MARYS	NSW	2760	N	Y	N
2	34	36	PLASSER	CRES	NORTH ST MARYS	NSW	2760	N	Y	N
6	38	40	PLASSER	CRES	NORTH ST MARYS	NSW	2760	N	Y	N
1	38	40	PLASSER	CRES	NORTH ST MARYS	NSW	2760	N	Y	N
5	38	40	PLASSER	CRES	NORTH ST MARYS	NSW	2760	N	Y	N
4	38	40	PLASSER	CRES	NORTH ST MARYS	NSW	2760	N	Y	N
2	38	40	PLASSER	CRES	NORTH ST MARYS	NSW	2760	N	Y	N
3	38	40	PLASSER	CRES	NORTH ST MARYS	NSW	2760	N	Y	N
	38	40	PLASSER	CRES	NORTH ST MARYS	NSW	2760	N	Y	N
	42	44	PLASSER	CRES	NORTH ST MARYS	NSW	2760	N	Y	N
	48	0	PLASSER	CRES	NORTH ST MARYS	NSW	2760	N	Y	N
6	50	52	PLASSER	CRES	NORTH ST MARYS	NSW	2760	N	Y	N
3	50	52	PLASSER	CRES	NORTH ST MARYS	NSW	2760	N	Y	N
1	50	52	PLASSER	CRES	NORTH ST MARYS	NSW	2760	N	Y	N
	50	52	PLASSER	CRES	NORTH ST MARYS	NSW	2760	Y	N	N
2	50	52	PLASSER	CRES	NORTH ST MARYS	NSW	2760	N	Y	N
4	50	52	PLASSER	CRES	NORTH ST MARYS	NSW	2760	N	Y	N
5	50	52	PLASSER	CRES	NORTH ST MARYS	NSW	2760	N	Y	N
	54	0	PLASSER	CRES	NORTH ST MARYS	NSW	2760	N	Y	N
	56	0	PLASSER	CRES	NORTH ST MARYS	NSW	2760	N	Y	N
	58	60	PLASSER	CRES	NORTH ST MARYS	NSW	2760	N	Y	N
	1	0	QUEEN	ST	ST MARYS	NSW	2760	N	Y	N
	2	4	QUEEN	ST	ST MARYS	NSW	2760	N	Y	N
	3	0	QUEEN	ST	ST MARYS	NSW	2760	N	Y	N
	5	0	QUEEN	ST	ST MARYS	NSW	2760	N	Y	N
	6	0	QUEEN	ST	ST MARYS	NSW	2760	N	Y	N
	7	0	QUEEN	ST	ST MARYS	NSW	2760	N	Y	N
	8	0	QUEEN	ST	ST MARYS	NSW	2760	N	Y	N
	9	11	QUEEN	ST	ST MARYS	NSW	2760	N	Y	N
	10	0	QUEEN	ST	ST MARYS	NSW	2760	N	Y	N
	12	0	QUEEN	ST	ST MARYS	NSW	2760	N	Y	N

Unit	Street Number (from)	Street Number (to)	Street Name	Street Type	Suburb	State	Post Code	Residential	Non-residential	Feedback received
	13	0	QUEEN	ST	ST MARYS	NSW	2760	N	Y	N
	14	0	QUEEN	ST	ST MARYS	NSW	2760	N	Y	N
	15	0	QUEEN	ST	ST MARYS	NSW	2760	N	Y	N
	17	0	QUEEN	ST	ST MARYS	NSW	2760	N	Y	N
	18	0	QUEEN	ST	ST MARYS	NSW	2760	N	Y	N
A	18	0	QUEEN	ST	ST MARYS	NSW	2760	N	Y	N
	18	0	QUEEN	ST	ST MARYS	NSW	2760	N	Y	N
	20	0	QUEEN	ST	ST MARYS	NSW	2760	N	Y	N
	21	0	QUEEN	ST	ST MARYS	NSW	2760	N	Y	N
	22	0	QUEEN	ST	ST MARYS	NSW	2760	N	Y	N
	24	0	QUEEN	ST	ST MARYS	NSW	2760	N	Y	N
	25	0	QUEEN	ST	ST MARYS	NSW	2760	Y	N	N
	25	0	QUEEN	ST	ST MARYS	NSW	2760	Y	N	N
	25	0	QUEEN	ST	ST MARYS	NSW	2760	Y	N	N
	25	0	QUEEN	ST	ST MARYS	NSW	2760	Y	N	N
	26	0	QUEEN	ST	ST MARYS	NSW	2760	N	Y	N
	27	0	QUEEN	ST	ST MARYS	NSW	2760	N	Y	N
	28	0	QUEEN	ST	ST MARYS	NSW	2760	N	Y	N
	29	0	QUEEN	ST	ST MARYS	NSW	2760	N	Y	N
	30	32	QUEEN	ST	ST MARYS	NSW	2760	N	Y	N
	31	0	QUEEN	ST	ST MARYS	NSW	2760	N	Y	N
	33	0	QUEEN	ST	ST MARYS	NSW	2760	N	Y	N
	34	0	QUEEN	ST	ST MARYS	NSW	2760	N	Y	N
	35	0	QUEEN	ST	ST MARYS	NSW	2760	N	Y	N
	36	0	QUEEN	ST	ST MARYS	NSW	2760	Y	N	N
2	36	0	QUEEN	ST	ST MARYS	NSW	2760	N	Y	N
3	36	0	QUEEN	ST	ST MARYS	NSW	2760	N	Y	N
1	36	0	QUEEN	ST	ST MARYS	NSW	2760	N	Y	N
	37	39	QUEEN	ST	ST MARYS	NSW	2760	N	Y	N
	38	0	QUEEN	ST	ST MARYS	NSW	2760	N	Y	N
	42	0	QUEEN	ST	ST MARYS	NSW	2760	N	Y	N
	43	0	QUEEN	ST	ST MARYS	NSW	2760	N	Y	N
	43	0	QUEEN	ST	ST MARYS	NSW	2760	N	Y	N
	44	0	QUEEN	ST	ST MARYS	NSW	2760	N	Y	N
	45	0	QUEEN	ST	ST MARYS	NSW	2760	Y	N	N
1	45	0	QUEEN	ST	ST MARYS	NSW	2760	N	Y	N
5	45	0	QUEEN	ST	ST MARYS	NSW	2760	N	Y	N
3	45	0	QUEEN	ST	ST MARYS	NSW	2760	N	Y	N

Unit	Street Number (from)	Street Number (to)	Street Name	Street Type	Suburb	State	Post Code	Residential	Non-residential	Feedback received
4	45	0	QUEEN	ST	ST MARYS	NSW	2760	N	Y	N
6	45	0	QUEEN	ST	ST MARYS	NSW	2760	N	Y	N
2	45	0	QUEEN	ST	ST MARYS	NSW	2760	N	Y	N
	46	0	QUEEN	ST	ST MARYS	NSW	2760	N	Y	N
	47	0	QUEEN	ST	ST MARYS	NSW	2760	N	Y	N
	48	0	QUEEN	ST	ST MARYS	NSW	2760	N	Y	N
	50	0	QUEEN	ST	ST MARYS	NSW	2760	N	Y	N
	51	0	QUEEN	ST	ST MARYS	NSW	2760	N	Y	N
	52	0	QUEEN	ST	ST MARYS	NSW	2760	N	Y	N
	54	0	QUEEN	ST	ST MARYS	NSW	2760	N	Y	N
47	55	0	QUEEN	ST	ST MARYS	NSW	2760	N	Y	N
	55	0	QUEEN	ST	ST MARYS	NSW	2760	Y	N	N
	56	0	QUEEN	ST	ST MARYS	NSW	2760	N	Y	N
	57	0	QUEEN	ST	ST MARYS	NSW	2760	N	Y	N
	57	0	QUEEN	ST	ST MARYS	NSW	2760	N	Y	N
	58	0	QUEEN	ST	ST MARYS	NSW	2760	N	Y	N
	58	0	QUEEN	ST	ST MARYS	NSW	2760	N	Y	N
	59	0	QUEEN	ST	ST MARYS	NSW	2760	Y	N	N
2	59	0	QUEEN	ST	ST MARYS	NSW	2760	N	Y	N
4	59	0	QUEEN	ST	ST MARYS	NSW	2760	N	Y	N
5	59	0	QUEEN	ST	ST MARYS	NSW	2760	N	Y	N
3	59	0	QUEEN	ST	ST MARYS	NSW	2760	N	Y	N
1	59	0	QUEEN	ST	ST MARYS	NSW	2760	N	Y	N
	60	0	QUEEN	ST	ST MARYS	NSW	2760	N	Y	N
	62	0	QUEEN	ST	ST MARYS	NSW	2760	N	Y	N
	64	0	QUEEN	ST	ST MARYS	NSW	2760	N	Y	N
	65	0	QUEEN	ST	ST MARYS	NSW	2760	N	Y	N
2	65	0	QUEEN	ST	ST MARYS	NSW	2760	N	Y	N
1	65	0	QUEEN	ST	ST MARYS	NSW	2760	N	Y	N
3	65	0	QUEEN	ST	ST MARYS	NSW	2760	N	Y	N
2	65	0	QUEEN	ST	ST MARYS	NSW	2760	N	Y	N
	65	0	QUEEN	ST	ST MARYS	NSW	2760	N	Y	N
	65	0	QUEEN	ST	ST MARYS	NSW	2760	N	Y	N
3	65	0	QUEEN	ST	ST MARYS	NSW	2760	N	Y	N
3	66	0	QUEEN	ST	ST MARYS	NSW	2760	N	Y	N
7	66	0	QUEEN	ST	ST MARYS	NSW	2760	N	Y	N
7A	66	0	QUEEN	ST	ST MARYS	NSW	2760	N	Y	N
9	66	0	QUEEN	ST	ST MARYS	NSW	2760	N	Y	N

Unit	Street Number (from)	Street Number (to)	Street Name	Street Type	Suburb	State	Post Code	Residential	Non-residential	Feedback received
7B	66	0	QUEEN	ST	ST MARYS	NSW	2760	N	Y	N
8A	66	0	QUEEN	ST	ST MARYS	NSW	2760	N	Y	N
5	66	0	QUEEN	ST	ST MARYS	NSW	2760	N	Y	N
	66	0	QUEEN	ST	ST MARYS	NSW	2760	Y	N	N
	66	0	QUEEN	ST	ST MARYS	NSW	2760	Y	N	N
4	66	0	QUEEN	ST	ST MARYS	NSW	2760	N	Y	N
6	66	0	QUEEN	ST	ST MARYS	NSW	2760	N	Y	N
1	66	0	QUEEN	ST	ST MARYS	NSW	2760	N	Y	N
8	66	0	QUEEN	ST	ST MARYS	NSW	2760	N	Y	N
8	66	0	QUEEN	ST	ST MARYS	NSW	2760	N	Y	N
	67	0	QUEEN	ST	ST MARYS	NSW	2760	N	Y	N
	67	0	QUEEN	ST	ST MARYS	NSW	2760	N	Y	N
	67	0	QUEEN	ST	ST MARYS	NSW	2760	N	Y	N
	67	0	QUEEN	ST	ST MARYS	NSW	2760	N	Y	N
	68	0	QUEEN	ST	ST MARYS	NSW	2760	N	Y	N
	69	0	QUEEN	ST	ST MARYS	NSW	2760	N	Y	N
	70	0	QUEEN	ST	ST MARYS	NSW	2760	N	Y	N
	71	0	QUEEN	ST	ST MARYS	NSW	2760	N	Y	N
2	72	0	QUEEN	ST	ST MARYS	NSW	2760	N	Y	N
	72	0	QUEEN	ST	ST MARYS	NSW	2760	N	Y	N
	73	0	QUEEN	ST	ST MARYS	NSW	2760	N	Y	N
	75	0	QUEEN	ST	ST MARYS	NSW	2760	N	Y	N
	75	0	QUEEN	ST	ST MARYS	NSW	2760	N	Y	N
	77	0	QUEEN	ST	ST MARYS	NSW	2760	N	Y	N
	79	0	QUEEN	ST	ST MARYS	NSW	2760	N	Y	N
	81	0	QUEEN	ST	ST MARYS	NSW	2760	N	Y	N
	82	0	QUEEN	ST	ST MARYS	NSW	2760	N	Y	N
	83	0	QUEEN	ST	ST MARYS	NSW	2760	N	Y	N
	84	0	QUEEN	ST	ST MARYS	NSW	2760	N	Y	N
	85	0	QUEEN	ST	ST MARYS	NSW	2760	N	Y	N
	86	0	QUEEN	ST	ST MARYS	NSW	2760	N	Y	N
	87	0	QUEEN	ST	ST MARYS	NSW	2760	N	Y	N
	87	0	QUEEN	ST	ST MARYS	NSW	2760	N	Y	N
	88	0	QUEEN	ST	ST MARYS	NSW	2760	N	Y	N
1	89	0	QUEEN	ST	ST MARYS	NSW	2760	N	Y	N
	89	0	QUEEN	ST	ST MARYS	NSW	2760	N	Y	N
	90	0	QUEEN	ST	ST MARYS	NSW	2760	N	Y	N
	91	0	QUEEN	ST	ST MARYS	NSW	2760	N	Y	N

Unit	Street Number (from)	Street Number (to)	Street Name	Street Type	Suburb	State	Post Code	Residential	Non-residential	Feedback received
	92	0	QUEEN	ST	ST MARYS	NSW	2760	N	Y	N
	92	0	QUEEN	ST	ST MARYS	NSW	2760	N	Y	N
	93	0	QUEEN	ST	ST MARYS	NSW	2760	N	Y	N
	95	0	QUEEN	ST	ST MARYS	NSW	2760	N	Y	N
	97	0	QUEEN	ST	ST MARYS	NSW	2760	N	Y	N
	98	0	QUEEN	ST	ST MARYS	NSW	2760	N	Y	N
	99	0	QUEEN	ST	ST MARYS	NSW	2760	N	Y	N
	99	0	QUEEN	ST	ST MARYS	NSW	2760	N	Y	N
	100	0	QUEEN	ST	ST MARYS	NSW	2760	N	Y	N
	102	0	QUEEN	ST	ST MARYS	NSW	2760	N	Y	N
	102	0	QUEEN	ST	ST MARYS	NSW	2760	N	Y	N
2	102	0	QUEEN	ST	ST MARYS	NSW	2760	N	Y	N
	102	0	QUEEN	ST	ST MARYS	NSW	2760	N	Y	N
	102	0	QUEEN	ST	ST MARYS	NSW	2760	N	Y	N
3	102	0	QUEEN	ST	ST MARYS	NSW	2760	N	Y	N
	104	0	QUEEN	ST	ST MARYS	NSW	2760	N	Y	N
1	104	0	QUEEN	ST	ST MARYS	NSW	2760	N	Y	N
1	106	0	QUEEN	ST	ST MARYS	NSW	2760	N	Y	N
2	106	0	QUEEN	ST	ST MARYS	NSW	2760	N	Y	N
	106	0	QUEEN	ST	ST MARYS	NSW	2760	N	Y	N
2	106	0	QUEEN	ST	ST MARYS	NSW	2760	N	Y	N
	106	0	QUEEN	ST	ST MARYS	NSW	2760	Y	N	N
1	106	0	QUEEN	ST	ST MARYS	NSW	2760	N	Y	N
	110	0	QUEEN	ST	ST MARYS	NSW	2760	N	Y	N
	110	0	QUEEN	ST	ST MARYS	NSW	2760	N	Y	N
	112	0	QUEEN	ST	ST MARYS	NSW	2760	N	Y	N
	1	0	ROSS	PL	ST MARYS	NSW	2760	Y	N	N
	2	0	ROSS	PL	ST MARYS	NSW	2760	Y	N	N
	3	0	ROSS	PL	ST MARYS	NSW	2760	Y	N	N
	3	0	ROSS	PL	ST MARYS	NSW	2760	Y	N	N
	3	0	ROSS	PL	ST MARYS	NSW	2760	Y	N	N
	4	0	ROSS	PL	ST MARYS	NSW	2760	Y	N	N
	5	0	ROSS	PL	ST MARYS	NSW	2760	Y	N	N
	5	0	ROSS	PL	ST MARYS	NSW	2760	Y	N	N
	5	0	ROSS	PL	ST MARYS	NSW	2760	Y	N	N
	6	0	ROSS	PL	ST MARYS	NSW	2760	Y	N	N
	7	0	ROSS	PL	ST MARYS	NSW	2760	Y	N	N
	8	0	ROSS	PL	ST MARYS	NSW	2760	Y	N	N

Unit	Street Number (from)	Street Number (to)	Street Name	Street Type	Suburb	State	Post Code	Residential	Non-residential	Feedback received
	9	0	ROSS	PL	ST MARYS	NSW	2760	Y	N	N
1	10	14	ROSS	PL	ST MARYS	NSW	2760	Y	N	N
8	10	14	ROSS	PL	ST MARYS	NSW	2760	Y	N	N
4	10	14	ROSS	PL	ST MARYS	NSW	2760	Y	N	N
10	10	14	ROSS	PL	ST MARYS	NSW	2760	Y	N	N
5	10	14	ROSS	PL	ST MARYS	NSW	2760	Y	N	N
11	10	14	ROSS	PL	ST MARYS	NSW	2760	Y	N	N
9	10	14	ROSS	PL	ST MARYS	NSW	2760	Y	N	N
12	10	14	ROSS	PL	ST MARYS	NSW	2760	Y	N	N
6	10	14	ROSS	PL	ST MARYS	NSW	2760	Y	N	N
3	10	14	ROSS	PL	ST MARYS	NSW	2760	Y	N	N
	10	14	ROSS	PL	ST MARYS	NSW	2760	Y	N	N
7	10	14	ROSS	PL	ST MARYS	NSW	2760	Y	N	N
2	10	14	ROSS	PL	ST MARYS	NSW	2760	Y	N	N
	11	0	ROSS	PL	ST MARYS	NSW	2760	Y	N	N
	13	0	ROSS	PL	ST MARYS	NSW	2760	Y	N	N
	15	0	ROSS	PL	ST MARYS	NSW	2760	Y	N	N
	16	0	ROSS	PL	ST MARYS	NSW	2760	Y	N	N
	17	0	ROSS	PL	ST MARYS	NSW	2760	Y	N	N
1	1	0	STATION	ST	ST MARYS	NSW	2760	Y	N	N
5	1	0	STATION	ST	ST MARYS	NSW	2760	Y	N	N
6	1	0	STATION	ST	ST MARYS	NSW	2760	Y	N	N
2	1	0	STATION	ST	ST MARYS	NSW	2760	Y	N	N
	1	0	STATION	ST	ST MARYS	NSW	2760	Y	N	N
3	1	0	STATION	ST	ST MARYS	NSW	2760	Y	N	N
7	1	0	STATION	ST	ST MARYS	NSW	2760	Y	N	N
4	1	0	STATION	ST	ST MARYS	NSW	2760	Y	N	N
4	2	0	STATION	ST	ST MARYS	NSW	2760	Y	N	N
	2	0	STATION	ST	ST MARYS	NSW	2760	Y	N	N
5	2	0	STATION	ST	ST MARYS	NSW	2760	Y	N	N
3	2	0	STATION	ST	ST MARYS	NSW	2760	Y	N	N
6	2	0	STATION	ST	ST MARYS	NSW	2760	Y	N	N
2	2	0	STATION	ST	ST MARYS	NSW	2760	Y	N	N
7	2	0	STATION	ST	ST MARYS	NSW	2760	Y	N	N
1	2	0	STATION	ST	ST MARYS	NSW	2760	Y	N	N
8	2	0	STATION	ST	ST MARYS	NSW	2760	Y	N	N
9	3	0	STATION	ST	ST MARYS	NSW	2760	Y	N	N
14	3	0	STATION	ST	ST MARYS	NSW	2760	Y	N	N

Unit	Street Number (from)	Street Number (to)	Street Name	Street Type	Suburb	State	Post Code	Residential	Non-residential	Feedback received
16	3	0	STATION	ST	ST MARYS	NSW	2760	Y	N	N
10	3	0	STATION	ST	ST MARYS	NSW	2760	Y	N	N
5	3	0	STATION	ST	ST MARYS	NSW	2760	Y	N	N
4	3	0	STATION	ST	ST MARYS	NSW	2760	Y	N	N
17	3	0	STATION	ST	ST MARYS	NSW	2760	Y	N	N
6	3	0	STATION	ST	ST MARYS	NSW	2760	Y	N	N
8	3	0	STATION	ST	ST MARYS	NSW	2760	Y	N	N
13	3	0	STATION	ST	ST MARYS	NSW	2760	Y	N	N
7	3	0	STATION	ST	ST MARYS	NSW	2760	Y	N	N
12	3	0	STATION	ST	ST MARYS	NSW	2760	Y	N	N
15	3	0	STATION	ST	ST MARYS	NSW	2760	Y	N	N
	3	0	STATION	ST	ST MARYS	NSW	2760	Y	N	N
11	3	0	STATION	ST	ST MARYS	NSW	2760	Y	N	N
2	3	0	STATION	ST	ST MARYS	NSW	2760	Y	N	N
3	3	0	STATION	ST	ST MARYS	NSW	2760	Y	N	N
18	3	0	STATION	ST	ST MARYS	NSW	2760	Y	N	N
1	3	0	STATION	ST	ST MARYS	NSW	2760	Y	N	N
2	11	0	STATION	ST	ST MARYS	NSW	2760	Y	N	N
	11	0	STATION	ST	ST MARYS	NSW	2760	Y	N	N
	15	0	STATION	ST	ST MARYS	NSW	2760	N	Y	N
	15	0	STATION	ST	ST MARYS	NSW	2760	N	Y	N
	63	0	STATION	ST	ST MARYS	NSW	2760	Y	N	N
3	63	0	STATION	ST	ST MARYS	NSW	2760	Y	N	N
2	63	0	STATION	ST	ST MARYS	NSW	2760	Y	N	N
1	63	0	STATION	ST	ST MARYS	NSW	2760	Y	N	N
	111	0	STATION	ST	ST MARYS	NSW	2760	N	Y	N
	112	0	STATION	ST	ST MARYS	NSW	2760	N	Y	N
	113	0	STATION	ST	ST MARYS	NSW	2760	N	Y	N
1	113	0	STATION	ST	ST MARYS	NSW	2760	N	Y	N
	113	0	STATION	ST	ST MARYS	NSW	2760	N	Y	N
	113	0	STATION	ST	ST MARYS	NSW	2760	N	Y	N
	114	0	STATION	ST	ST MARYS	NSW	2760	N	Y	N
	0	0	WEST	LANE	ST MARYS	NSW	2760	N	Y	N
	201	0	WEST	LANE	ST MARYS	NSW	2760	N	Y	N
	203	0	WEST	LANE	ST MARYS	NSW	2760	N	Y	N
	205	0	WEST	LANE	ST MARYS	NSW	2760	N	Y	N