

Sydney Metro WSA - SSTOM - OHE - E57 Orchard Hills Station Consultation report

SMWSASSM-PLD-OHE-SN100-CG-RPT-000001 (Rev 01)

Parklife Metro D&C

Version Control

Revision	Author	Date	Comments	Approved by
00	B.Shamal	16/01/2024	Initial draft	R.Noakes
01	J.Spence	18/06/2024	Updated document	R.Noakes

Signature

Details of Revision Amendments Document Control

The Parklife Metro Environment Manager and the Parklife Metro Stakeholder & Community Engagement Director are responsible for ensuring this report is reviewed and approved and updated as required.

The Parklife Metro Community & Stakeholders Place Manager is responsible for the consultation and updating of this report, as required.

Amendments

Any revisions or amendments must be approved by the Environment Manager and the Stakeholder & Community Engagement Director before being distributed and implemented.

Contents

Glossary	4
1 Overview	5
1.1 Project background	5
1.2 SSTOM scope of works.....	5
1.2.1 Orchard Hills Metro Station	8
1.3 Out-of-hours scope of works	8
1.3.1 Ongoing oversized plant and equipment deliveries	8
1.3.2 Extended work hours for concrete works	8
1.3.3 Extended work hours for waterproofing works	8
1.3.4 Concrete batching plant operations.....	9
2 Conditions of Approval requirements	9
2.1 Out-of-hours Works – Community Consultation on Respite	9
2.2 Respite eligibility.....	9
2.3 Mitigation measures and planned respite periods	10
3 Consultation tools and channels	10
3.1 Communications tools	11
3.2 Communication activities timeline	12
3.3 Stakeholder list.....	13
3.4 Distribution maps.....	15
4 Conclusion	16
Appendix A Noise modelling maps	17
Appendix B Communication materials	21
Appendix C Impacted properties and consultation records	27
Appendix D Conditions of Approval (SSI 10051)	28

Glossary

Standard terms and definitions.

TABLE 1. STANDARD TERMS

Term	Definition
Project	Sydney Metro – Western Sydney Airport
Parklife Metro	Consortium comprising entities of Plenary, Siemens Mobility, Siemens Financial Services, WeBuild and RATP Dev as successful contractors for the Sydney Metro Western Sydney Airport SSTOM Package.
Parklife Metro D&C	Parklife Metro Design and Construct. Consists of WeBuild S.P.A, Siemens Mobility Pty Ltd. Responsible for the construction of SSTOM Works

TABLE 2. ABBREVIATIONS

Term	Definition
CCMS	Construction Complaints Management System
CCS	Community Communications Strategy
CEMP	Construction Environmental Management Plan
CNVS	Sydney Metro Construction Noise and Vibration Standard
CNVIS	Construction Noise and Vibration Impact Statement
CNVMP	Construction Noise and Vibration Management Plan
CoA	Conditions of Approval
CSSI	Critical State Significant Infrastructure
DNVIS	Detailed Noise and Vibration Impact Statement
DPE	Department of Planning and Environment
EPA	NSW Environment Protection Authority
EPL	Environmental Protection Licence
OOH	Out-of-hours
OOHW	Out-of-hours work
OSOM	Over-size over-mass
SBT	Station boxes and tunnelling works
SCAW	Surface and civil alignment works
SM-WSA	Sydney Metro – Western Sydney Airport
SSTOM	Stations, Systems, Trains, Operations and Maintenance

1 Overview

This E57 Community Consultation Report provides a summary of consultation undertaken by Parklife Metro in accordance with Condition of Approval E57, with respect to out-of-hours work (OOHW), which includes deliveries of plant and equipment, extended work hours for concrete pours and concrete finishing works, and waterproofing within the station box and dive areas, at the Orchard Hills Metro Station site.

1.1 Project background

The Sydney Metro – Western Sydney Airport (SM-WSA) will become the transport spine for Greater Western Sydney, connecting communities and travellers with the new Western Sydney International (Nancy-Bird Walton) Airport and the growing region.

The city-shaping project, from St Marys through to the new airport and the Western Sydney Aerotropolis (the new suburb of Bradfield), will provide a major economic stimulus for western Sydney, supporting more than 14,000 jobs during construction for the NSW and national economies.

Jointly funded by the Australian and NSW Governments, the 23-kilometre new railway will link residential areas with job hubs including the new Aerotropolis and connect travellers from the new airport to the rest of Sydney's public transport system.

The Australian and NSW governments have awarded all three major contracts for the Sydney Metro – Western Sydney Airport project:

- Station boxes and tunnelling (SBT) – currently in delivery
- Surface and civil alignment works (SCAW) – currently in delivery
- Stations, Systems, Trains, Operations and Maintenance (SSTOM) – works commencing mid-late 2023.

1.2 SSTOM scope of works

In December 2022, the largest ever Public Private Partnership (PPP) contract in New South Wales, was awarded to Parklife Metro for the Stations, Systems, Trains, Operations and Maintenance (SSTOM) works for the Sydney Metro - Western Sydney Airport Project.

Parklife Metro will deliver:

- Around 4.3km of twin rail tunnels (generally located side by side) between St Marys (the Northern extent of the project) and Orchard Hills
- A cut-and-cover tunnel around 350 metres long (including tunnel portal), transitioning to an in-cutting rail alignment south of the M4 Western Motorway at Orchard Hills
- Around 10km of rail alignment between Orchard Hills and Western Sydney International, consisting of a combination of viaduct and surface rail alignment
- Around two kilometres of surface rail alignment within Western Sydney International Airport
- Around 3.3km of twin rail tunnels (including tunnel portal) within Western Sydney International Airport
- Around 3km of twin rail tunnels between Western Sydney International Airport and the Aerotropolis Core
- Six new Metro Stations:
 - St Marys (providing an interchange with the existing Sydney Trains suburban rail network)
 - Orchard Hills
 - Luddenham
 - Airport Business Park
 - Airport Terminal

- Aerotropolis (the new Western Parkland City)
- Grade separation of the track alignment at key locations including:
 - Where the alignment interfaces with existing infrastructure such as the Great Western Highway, M4 Western Motorway, Lansdowne Road, Patons Lane, the Warragamba to Prospect Water Supply Pipelines, Luddenham Road, the future M12 Motorway, Elizabeth Drive, Derwent Road and Badgerys Creek Road
 - Crossings of Blaxland Creek, Cosgroves Creek, Badgerys Creek and other small waterways to provide flood immunity for the Project
- Modifications to the existing Sydney Trains station and rail infrastructure at St Marys (where required) to support interchange and customer transfer between the new metro station and the existing Sydney Trains suburban rail network
- A stabling and maintenance facility and operational control centre located to the south of Blaxland Creek and east of the proposed metro track
- New pedestrian, cycle, park-and-ride and kiss-and-ride facilities, public transport interchange infrastructure, road infrastructure and landscaping as part of the station precincts.

Parklife Metro will also operate and maintain the Sydney Metro – Western Sydney Airport (SM-WSA) line, and its assets for 15 years after it becomes operational in 2026.

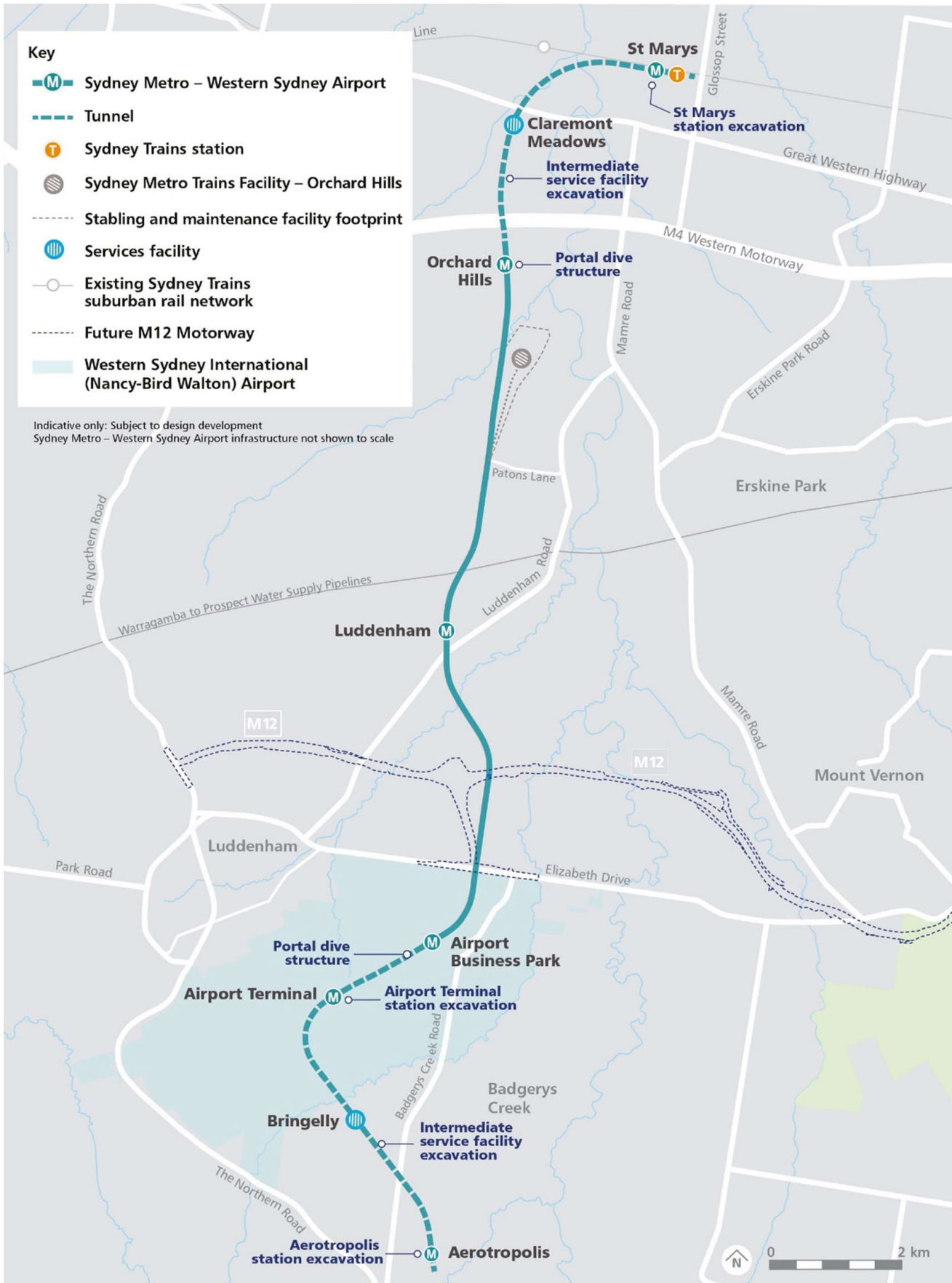


FIGURE 1. MAP OF THE SM-WSA PROJECT ALIGNMENT, AND STATION LOCATIONS

1.2.1 Orchard Hills Metro Station

The Orchard Hills Metro Station will be an open cut station, located on the eastern side of Kent Road, at the intersection of Lansdowne Road. The station will have one entrance on Kent Road, with provision for a second entrance to be built east of the station in the future.

Key features and benefits of the Orchard Hills Metro Station will include:

- Secure bicycle parking
- Park-and-ride facilities, with a capacity of up to 500 spaces
- Transport interchange facilities, including bus bays and shelters, kiss-and-ride bays, and point-to-point vehicle facilities
- Upgrades to Kent Road and Lansdowne Road, which will involve the construction of new precinct roads, installation of new pedestrian crossings, and the creation of a new public plaza adjacent to the proposed station entrance
- Potential for future station retail amenities

1.3 Out-of-hours scope of works

1.3.1 Ongoing oversized plant and equipment deliveries

Some activities, such as over-size over-mass equipment deliveries must be carried out at night when there is approval to occupy the roadway, to minimise traffic disruption and reduce safety risks to workers and road users.

Removal of the over-size over-mass materials and equipment will also be required to be removed from site out-of-hours to when there is approval to occupy the roadway, to minimise traffic disruption and reduce safety risks to workers and road users.

Deliveries requiring out-of-hours work (OOHW) may include, but is not limited to:

- Mobile cranes
- Excavators
- Other oversized materials and equipment.

1.3.2 Extended work hours for concrete works

Due to the size of the concrete pours for the station box base slabs and walls, we will require to work extended construction hours to complete the pours and finishing works to mitigate any safety and quality risks.

Concrete pours extended hours will occur from June to November 2024:

- Concrete pours will continue from 6pm up to 9pm, Monday to Friday; and 1pm to 4pm Saturdays
- Concrete finishing works inside the station box will continue from 6pm up to 10pm Monday to Friday; and 1pm to 4pm Saturdays.

1.3.3 Extended work hours for waterproofing works

Access to sections of the dive structure cannot be obtained for waterproofing installation whilst other activities are being undertaken within the dive. Waterproofing, as quiet works, will be undertaken daytime OOH on Saturdays so that all sections of the dive can be available to permit installation.

Waterproofing extended hours will occur from June to August 2024:

- Waterproofing work hours will continue from 1pm to 6pm, Saturdays within the station box.

1.3.4 Concrete batching plant operations

The concrete batching plant will initially operate during our extended work hours for concrete pours to supply concrete across multiple SSTOM locations across the Project alignment. Once work commences within the tunnel sections and linewise, the concrete batching plant will be operational 24 hours a day, seven days a week. The batching plant is currently under construction and is expected to be operational from July 2024.

2 Conditions of Approval requirements

This E57 Community Consultation Report provides a summary of consultation undertaken in accordance with Condition of Approval E57 with respect to out of hours works activities proposed at the Orchard Hills Metro Station site.

2.1 Out-of-hours Works – Community Consultation on Respite

Condition of Approval E57 states:

In order to undertake out-of-hours work outside the work hours specified under Condition E38, appropriate respite periods for the out-of-hours work must be identified in consultation with the community at each affected location on a regular basis. This consultation must include (but not be limited to) providing the community with:

- (a) a progressive schedule for periods no less than three (3) months, of likely out-of-hours work;
- (b) a description of the potential work, location and duration of the out-of-hours work;
- (c) the noise characteristics and likely noise levels of the work; and
- (d) likely mitigation and management measures which aim to achieve the relevant noise management levels (NMLs) under Condition E43 (including the circumstances of when respite or relocation offers will be available and details about how the affected community can access these offers).

The outcomes of the community consultation, the identified respite periods and the scheduling of the likely out-of-hour work must be provided to the ER, EPA and the Planning Secretary prior to the out-of-hours work commencing.

Note: Respite periods can be any combination of days or hours where out-of-hours work would not be more than 5 dB(A) above the RBL at any residence.

2.2 Respite eligibility

In accordance with the Sydney Metro Construction Noise and Vibration Standard (CNVS), the Construction Noise and Vibration Management Plan (CNVMP), and the Detailed Noise and Vibration Impact Statements (DNVIS); all noise affected receivers are eligible for respite periods, applicable during out-of-hours activities when works are predicted to exceed the NMLs during evening and night-time periods:

Additional mitigation measures as per the CNVS, CNVMP and DNVIS are included in Table 1 below.

TABLE 1. OUT-OF-HOURS MITIGATION MEASURES AS PER THE PROJECTS ENVIRONMENTAL PLANNING DOCUMENTS

Time period	Mitigation measures for predicted LAeq (15 minute) airborne noise level above NML				
	0-10dB	10-20dB	20-30dB	>30dB	
Approved construction hours	Mon-Fri (7:00am - 6:00pm)	-	LB	LB, M, SN	LB, M, SN
	Sat (8:00am – 1:00pm)				
	Sun/Pub Hol (Nil)				
	Mon-Fri (6:00pm – 10:00pm)	LB	LB, M		

OOHW (Evening)	Sat (1:00pm – 10:00pm)			LB, M, SN, RO	LB, M, SN, IB, PC, RO
	Sun/Pub Hol (8:00am – 6:00pm)				
OOHW (Night)	Mon-Fri (10:00pm – 7:00am)			LB, M, SN, IB, PC, RO, AA	LB, M, SN, IB, PC, RO, AA
	Sat (10:00pm – 8:00am)	LB	LB, M, SN, RO		
	Sun/Pub Hol (6:00pm – 7:00am)				

NOTE: Phone calls (PC), Monitoring (M), Individual briefings (IB), Alternative Accommodation (AA), Specific Notification (SN), letterbox drop (LB), Duration Reduction (DR), Project Specific Respite Offer (RO).

2.3 Mitigation measures and planned respite periods

This work is expected to generate intermittent periods of noise, when the delivery trucks have reached site, and unloading the equipment. For the proposed out-of-hours work, the following mitigation measures and respite will be implemented:

- Noise barriers will be installed around the concrete batching plant prior to operations commencing
- Respite periods will be applied as required meaning works will be undertaken no more than three nights in a week, no more than two consecutive nights, and no more than 10 nights in a month. If additional nights are required, further mitigation measures will apply
- Works will not be undertaken between the hours of 6pm Saturdays, Sundays or Public Holidays and 7am the following day. If work is required during this period, further mitigation measures will apply
- Noise monitoring will be undertaken to confirm our noise modelling, and inform additional mitigation measures, as required
- All vehicles will be turned off when not in use, non-tonal reversing alarms will be fitted to plant and machinery, and trucks will avoid reversing, where feasible
- Temporary lighting will be directed away from properties, to avoid light spill
- Communication will be limited to radios only when moving and unloading equipment, with no shouting, use of horns or loud radios, unless there is an emergency
- Ongoing doorknocks and consultation, to seek further feedback, and to be able to address any reasonable concerns
- Co-ordination of out-of-hours works with the Station Boxes and Tunnelling Contractor and the Surface and Civil Alignment contractors to minimise cumulative noise impact to sensitive receivers and ensure that respite periods are met.

3 Consultation tools and channels

Community consultation has been undertaken prior to commencement of the out-of-hours work in accordance with the PLM Community Communications Strategy (CCS) and the Project’s Environmental Protection Licence (EPL) 21807.

3.1 Communications tools

Consultation includes a range of tools including:

Type	Purpose and use
Monthly construction updates	<p>A monthly construction update distributed at the start of each month, providing details on:</p> <ul style="list-style-type: none">• Upcoming construction activities for the month, including any OOHW• Hours of work, and durations• Equipment used on site• Traffic, pedestrian and cyclist routes on any changes, closures, and/detours• Likely impacts of construction activities, including noise, vibration, traffic, access, and dust• Mitigation measures to reduce the impacts of activities• Work location maps• Contact details, including how feedback can be provided
Out-of-hours notifications	<p>An out-of-hours notification distributed to a 200m radius of site, or further as required to notify all noise affected receivers, no less than seven calendar days and no more than 14 calendar days, prior to OOHW commencing, providing details on:</p> <ul style="list-style-type: none">• Upcoming OOH construction activities, including hours of work and durations• Equipment used on site• Traffic, pedestrian and cyclist routes on any changes, closures, and/detours• Likely impacts of construction activities, including noise, vibration, traffic, access, and dust during the OOHW• Mitigation measures to reduce the impacts of activities during the OOHW• OOHW location maps• Contact details, including how feedback can be provided
Specific notifications	<p>Specific notification distributed to those identified as impacted receivers during the OOHW.</p> <p>Specific notification is used to support the monthly construction updates and OOHW notifications, to provide additional details on the impacts, and any changes that may occur.</p>
Doorknocks	<p>Doorknocks to impacted properties to consult on the proposed OOHW, and any feedback.</p>

Community Information Line: 1800 717 703	Provides community access to the project communications team during construction hours. OOH complaints will be referred to the on-call Place Manager.
Sydney Metro email: sydneymetroswa@transport.nsw.gov.au	Provides access during business hours to the Sydney Metro project communications team. Website enquiries are directed through this email address.
Postal address for written feedback: Sydney Metro, PO BOX K659 Haymarket, NSW 1240	Provides access to the broader Sydney Metro project. Address is included in all notifications and newsletters.
Consultation Manager	All interactions with stakeholders will be recorded in this database which is established by Sydney Metro.

3.2 Communication activities timeline

TABLE 3. COMMUNICATION ACTIVITIES TIMELINE

Date	Activity	Details
28 May 2024	Monthly construction update distributed to 200m of site.	Distribution to properties in Figure 2. Also includes: Campaign email Notification uploaded to SM website
17 June 2024	Specific notification distributed for extended work hours for concreting works.	Properties listed in Section 3.3, Table 4 - Extended hours – concrete pours and concrete finishing works
18 June 2024	Doorknock properties as a courtesy directly adjacent to the worksite with specific notification for extended work hours for concreting works.	Targeted doorknock to properties in Section 3.3, Table 4 - Extended hours – concrete pours and concrete finishing works SWMY slips left if no contact was made.
23 June 2024	Monthly construction update distributed to all noise affected receivers nearby site, which included proposed out-of-hours activities.	Distribution to properties shown in Figure 3 and listed in Appendix C. Also includes: Campaign email Notification uploaded to SM website
Ongoing	Re-engagement with the community on any proposed OOHW. All feedback received will be considered and implemented, where feasible.	
Ongoing	Re-engagement with the community prior to the operations of the concrete batching plant commencing, to advise and receive any feedback that may be considered and implemented	

3.3 Stakeholder list

TABLE 4.

Stakeholder	Location	Communication activities
Broader distribution area (Properties listed in Appendix C)	200m of site – Orchard Hills Metro Station	Monthly notifications
	Extended notification distribution area to all noise affected receivers.	OOHW notifications
		Campaign emails
Oversized deliveries - impacted properties and nearby residents	76-82 Samuel Marsden Road	Monthly notifications
	116 Samuel Marsden Road	Campaign emails
	2 Lansdowne Road	
	14 Lansdowne Road	
	40 Lansdowne Road	
	40A Lansdowne Road	
	40B Lansdowne Road	
	54 Lansdowne Road	
	60 Lansdowne Road	
	68 Lansdowne Road	
	95 Kent Road	
107-111 Kent Road		
Extended hours – concrete pours and concrete finishing works	128 Samuel Marsden Road	Targeted doorknocks and phone calls to directly adjacent properties
	138 Samuel Marsden Road	
	124 Samuel Marsden Road	Monthly notifications
	116 Samuel Marsden Road	
	84 Samuel Marsden Road	OOHW notifications
	76-82 Samuel Marsden Road	
	68 – 74 Samuel Marsden Road	Campaign emails
	44 – 66 Samuel Marsden Road	
	63 Samuel Marsden Road	
	71 – 81 Samuel Marsden Road	
	95 Samuel Marsden Road	
	97 – 107 Samuel Marsden Road	
	123A Samuel Marsden Road	
	40A Lansdowne Road	
	40B Lansdowne Road	
	54 Lansdowne Road	
2 Lansdowne Road		

14 Lansdowne Road

16-20 Lansdowne Road

60 Lansdowne Road

107 Kent Road

101 Kent Road

Full list of properties distributed to in Appendix C.

Noise modelling with impacted properties shown in Appendix A.

Concrete batching plant operations

Full list of properties distributed to in Appendix C.

Noise modelling with impacted properties shown in Appendix A.

Doorknocks and phonecalls

Monthly notifications

OOHW notifications

Campaign emails

3.4 Distribution maps

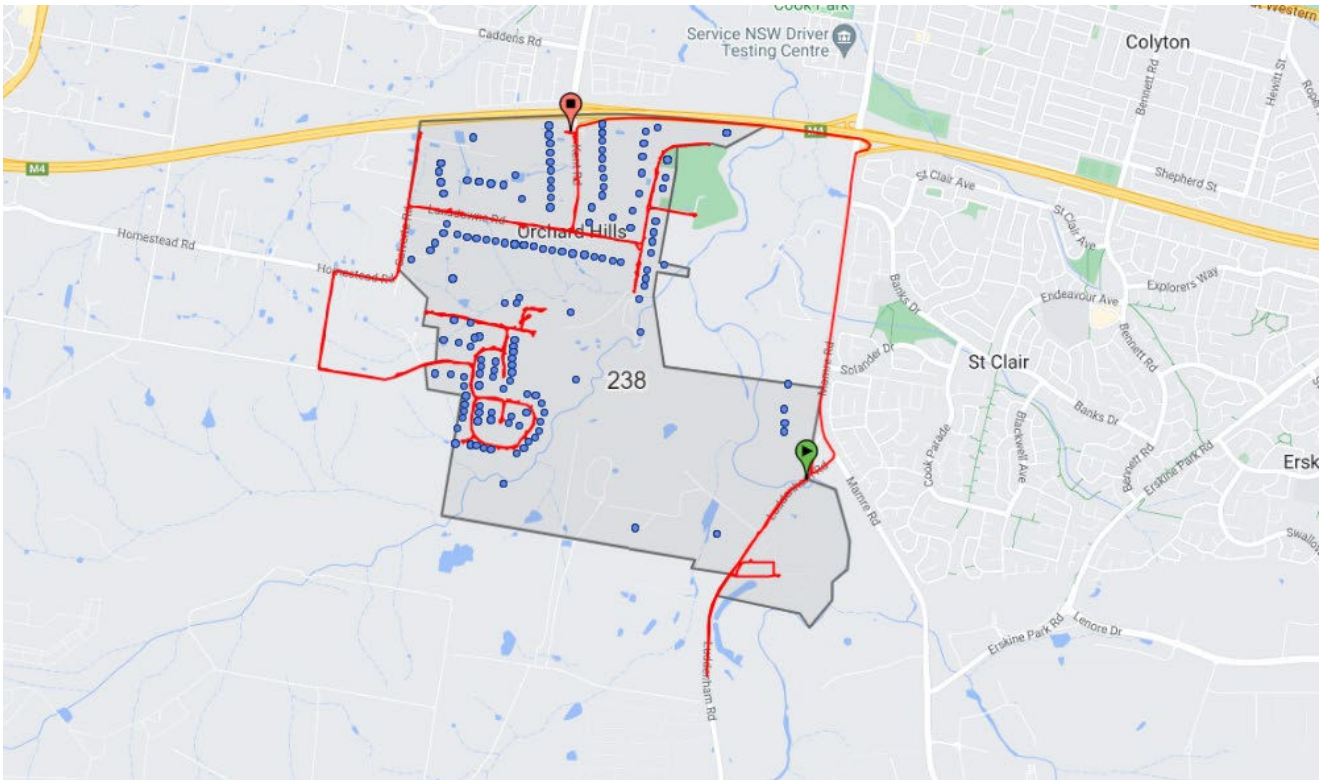


FIGURE 2. DISTRIBUTION MAP - 200M RADIUS OF SITE

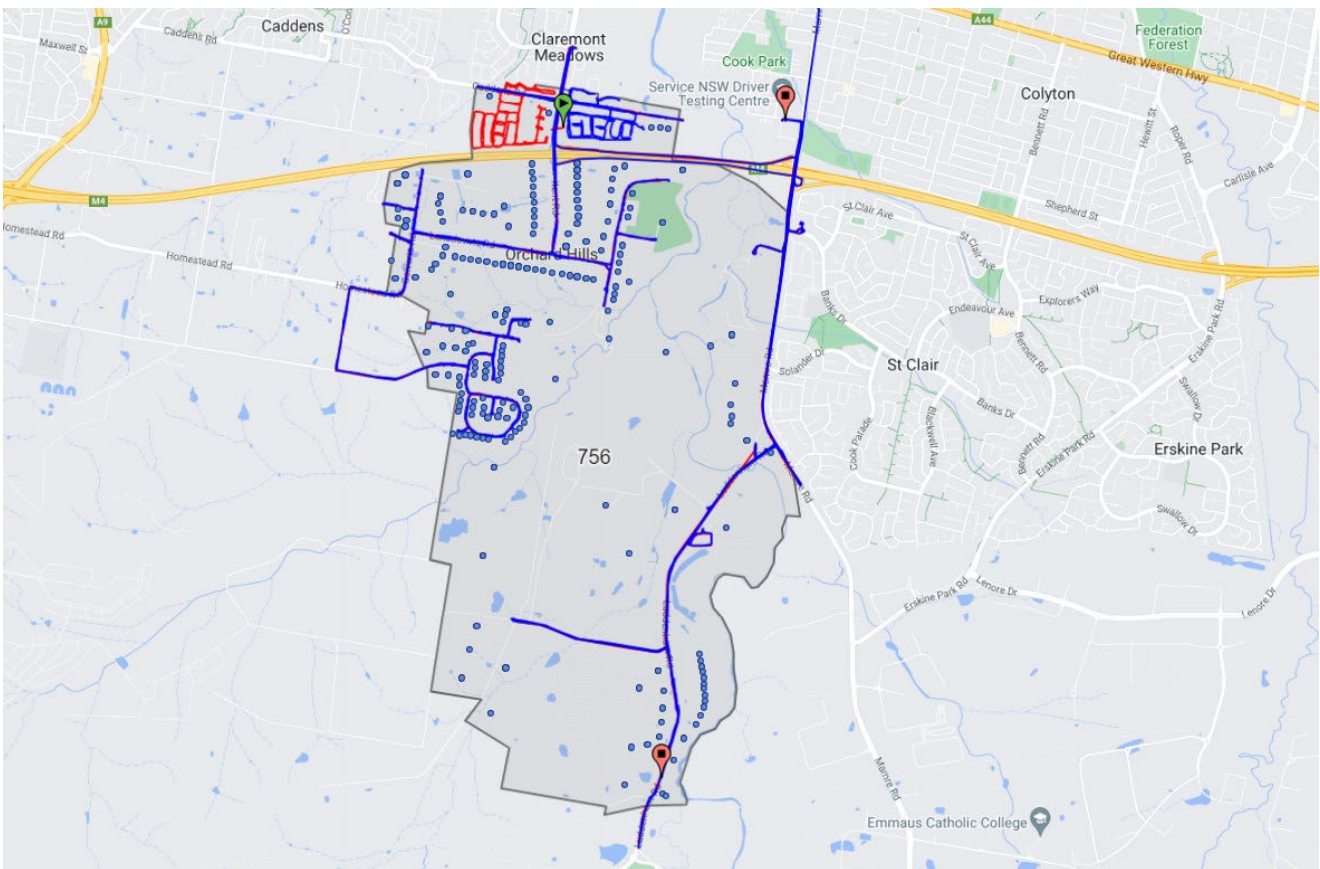


FIGURE 3. DISTRIBUTION MAP TO ALL AFFECTED NOISE RECEIVERS

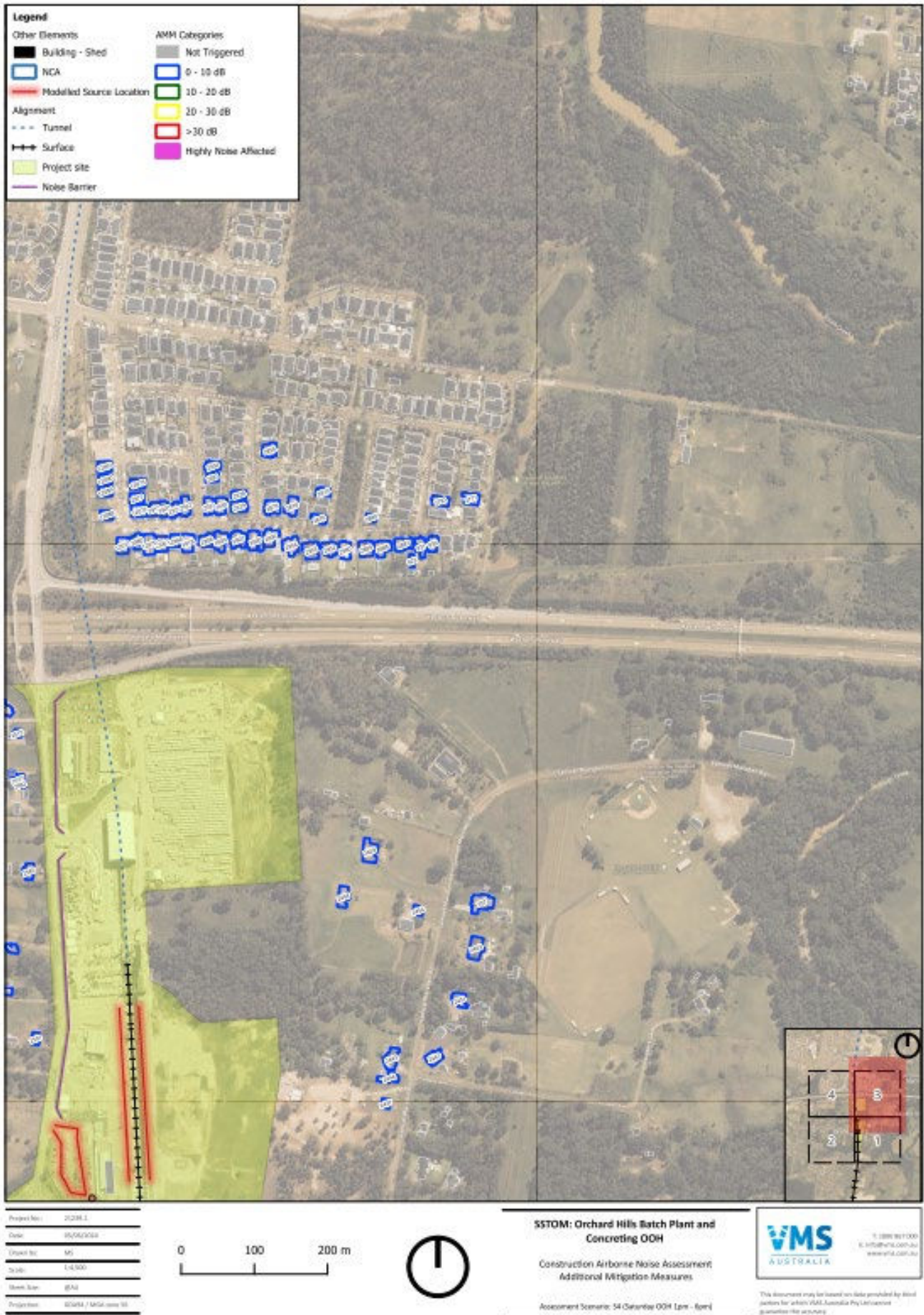
4 Conclusion

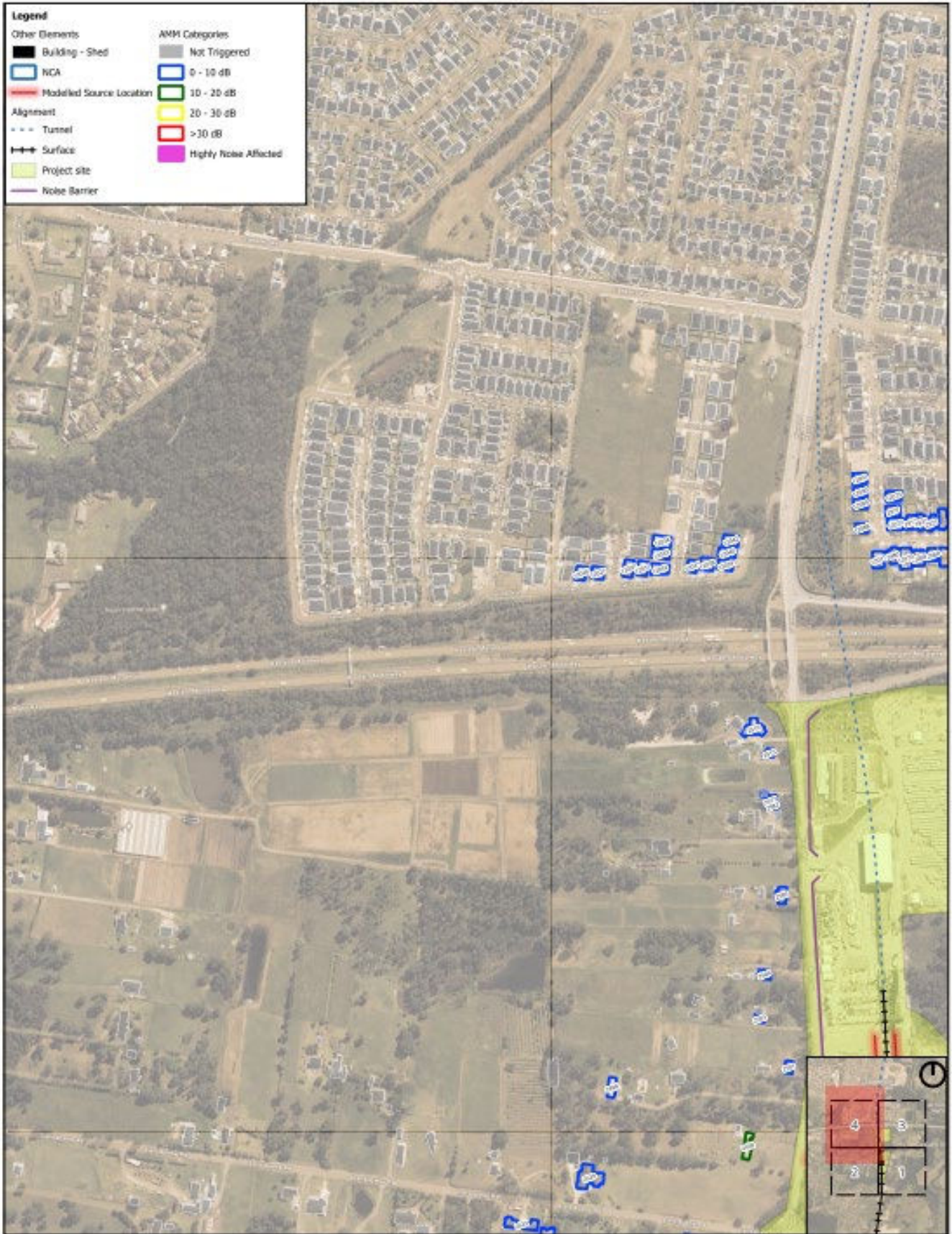
All consultation undertaken to date, including monthly construction updates; OOHW notifications, specific notifications and door knocks to all noise affected receivers identified in our noise modelling has resulted in no feedback or preferences on specific mitigation measures or respite periods. Receivers have agreed to the respite periods proposed for all upcoming OOHW.

The standard mitigation measures and respite requirements established in the Sydney Metro Construction Noise and Vibration Standard and Project EPL 21807, will be implemented during the works and follow-up consultation will be undertaken by the Parklife Metro Community Place Manager to ascertain the effectiveness of the implemented controls and seek additional feedback.

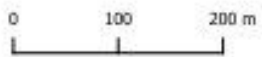
As per E57, if any feedback is received it will be considered and implemented where feasible, and any specific feedback or preferences on mitigation measures will require a revision of the DNVIS.

Appendix A Noise modelling maps





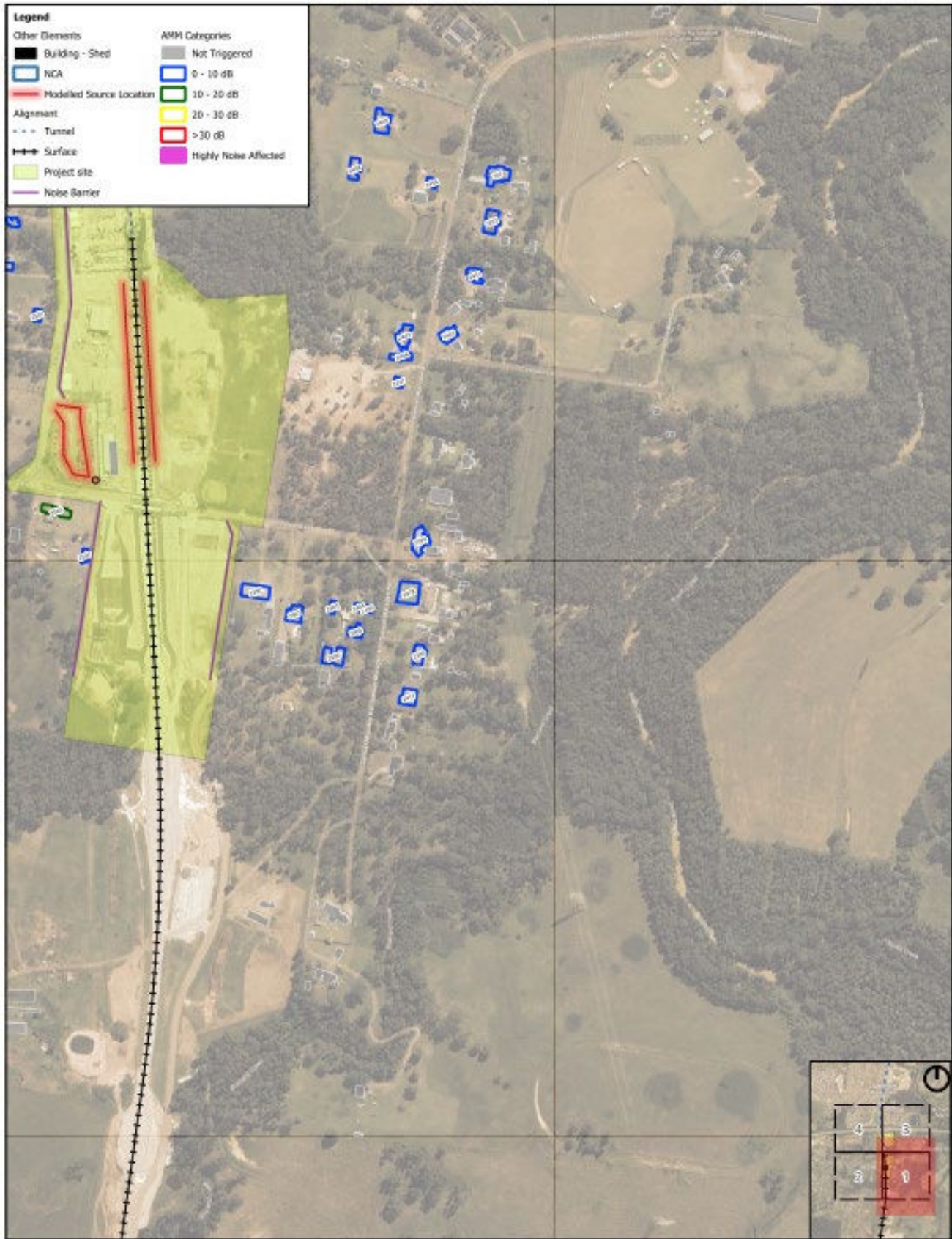
Project No:	2024-1
Date:	25/06/2024
Client No:	MS
Scale:	1:4,000
Sheet No:	BA1
Prepared:	©2024 / VMS (see 10)



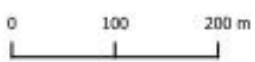
SSTOM: Orchard Hills Batch Plant and Concreting OOH
 Construction Airborne Noise Assessment
 Additional Mitigation Measures
 Assessment Scenario: S4 (Scenario 004) Low - Road



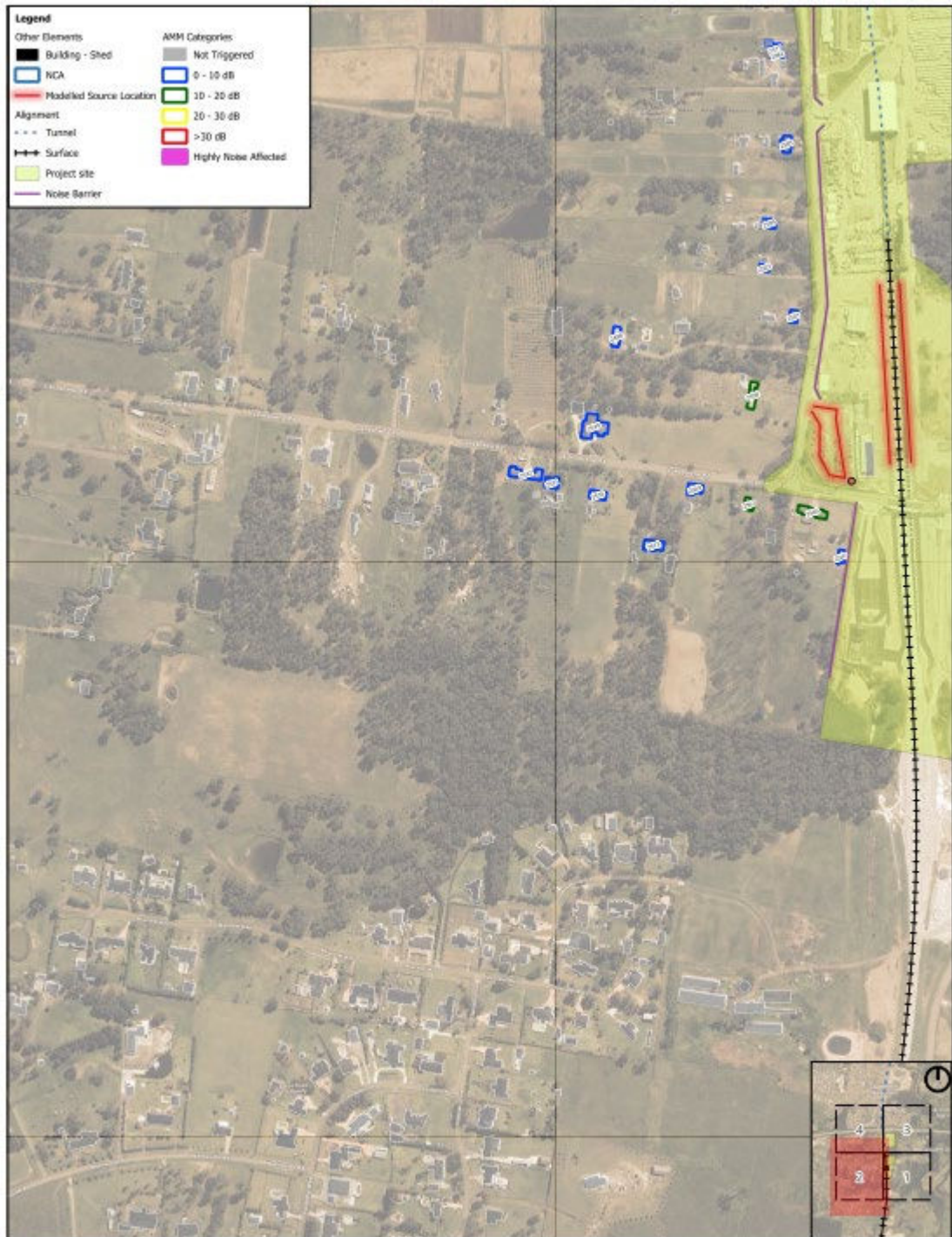
This document may be based on data provided by third parties for which VMS Australia Pty Ltd cannot guarantee the accuracy.



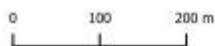
Project No.	20238.1
Date	04/06/2024
Drawn by	MS
Scale	1:4,500
Sheet Size	A3
Projectfile	20434 / MGL-noise 01



SSTOM: Orchard Hills Batch Plant and Concreting OOH
 Construction Airborne Noise Assessment
 Additional Mitigation Measures
 Assessment Scenario: 54 (Saturday OOH 1pm - 6pm)



Project No.	22281.1
Date	06/06/2024
Drawn by	MS
Scale	1:4,000
Drawn Date	05/06
Project	SSOM - Orchard Hills Station



SSTOM: Orchard Hills Batch Plant and Concreting OOH
 Construction Airborne Noise Assessment
 Additional Mitigation Measures
 Assessment Scenario: S4 (Scenario OOH Low - 6pm)

VMS AUSTRALIA
 11/1880 8617000
 11/1880 8617000
 www.vms.com.au

This document may be based on data provided by third parties. For further VMS Australia Pty Ltd cannot guarantee the accuracy.

Appendix B Communication materials

MONTHLY CONSTRUCTION UPDATE

Sydney Metro – Western Sydney Airport

Notification – Orchard Hills Metro Station and the Stabling and Maintenance Facility

Sydney Metro is Australia's biggest transport project.

July 2024

Sydney Metro – Western Sydney Airport is the new metro railway line which will service Greater Western Sydney and the new Western Sydney International (Nancy-Bird Walton) Airport. A city-shaping project, the new 23-kilometre metro railway will connect Bradfield city centre with St Marys in the north – where customers can connect to the existing Sydney Trains suburban T1 Western Line. The NSW and Australian governments have a shared objective of having Sydney Metro – Western Sydney Airport operational when the airport opens for passenger services.

CPB Contractors and United Infrastructure are delivering the Surface and Civil Alignment (SCAW) works. CPB Contractors Ghella are delivering Stations Boxes and Tunnelling (SBT) and Parklife Metro consortium are delivering the Stations, Systems, Trains, Operations and Maintenance (SSTOM) works. See the list below for the work activities at Orchard Hills during July. See maps for the work locations.

Stations, Systems, Trains, Operations and Maintenance works include:

Orchard Hills Metro Station:

- Excavations, waterproofing, formwork, steel fixing and concrete pours inside the station box to construct the base and walls of the station, and drainage pits.
- Constructing a concrete batching plant on the eastern end of the site, which will provide concrete services to multiple SSTOM sites and locations.
- Surveying and geotechnical investigations, including potholing, non-destructive digging and testing along local surrounding roads to inform utility designs.

Stabling and Maintenance Facility:

- Major earthworks at the Stabling and Maintenance Facility site, including importing materials, excavations and compacting for the rail areas, and substation and operations control centre buildings.
- Construction of a new 132kV powerline at the Stabling and Maintenance Facility site, commencing from the future substation area, working towards Patons Lane
- Major drainage works, including excavations, installing pits and pipes, and backfilling at the Stabling and Maintenance Facility site.

Surface and Civil Alignment works include:

- Drainage installation and construction of the access road off Lansdowne Road
- Deliveries and placement of oversized infrastructure at Blaxland Creek, Patons Lane and Unnamed Creek
- Ongoing surface formation and earthworks for the track alignment between Lansdowne Road and the Warragamba Pipelines
- Installation of concrete parapets on the viaduct over Patons Lane
- Finishing works including topsoiling, landscaping and installation of open drains and fencing, continue.

Station Boxes and Tunnelling works include:

- Site wide concrete works, including formwork, for various structures
- Tunnel boring machine segments transported to Claremont Meadows
- Commissioning and operation of a water treatment plant



Subscribe for updates at sydneymetrowsa@transport.nsw.gov.au



<https://www.sydneymetro.info/privacy-policy>

- Delivering and removing plant and equipment and installing tunnel drive structure drainage and concrete formwork
- Safely removing hazardous materials, in line with SafeWork NSW and Environment Protection Authority guidelines, and Sydney Metro health and safety procedures
- Site photography using drone cameras above the construction site.

Out-of-hours work activity includes:

- Deliveries of over-sized equipment and machinery and materials to the Orchard Hills Metro Station and Stabling Maintenance Facility sites
- Extended work hours for large concrete pours and concrete finishing works inside the station box at the Orchard Hills site.
- Dewatering activities at the Orchard Hills and Stabling Maintenance Facility sites
- Extended work hours for major earthworks at the Stabling Maintenance Facility site
- Concrete batching plant operations at the Orchard Hills Metro Station site
- Viaduct Installation at Unnamed Creek and over Patons Lane
- Abutment steel fixing and Formwork Installation at Patons Lane South.

Work hours:

Standard construction hours are Monday to Friday from 7am to 6pm and Saturdays from 8am to 1pm.

Activities associated with tunnelling operate 24 hours a day, 7 days per week.

Some work will also be required to take place outside our standard construction hours to minimise traffic impacts or to ensure the safety of pedestrians, motorists, and our workers. Out-of-hours work activities will be carried out in line with the project Environmental Protection Licence, Road Occupancy Licences, and Transport for NSW requirements.

Impacted surrounding residents and businesses will be notified in advance of any out-of-hours work.

What to expect:

- Mitigation measures will be in place to minimise impacts including installing noise blankets, where feasible, respite periods during high noise activities, noise and vibration monitoring, and water carts for dust suppression
- Increased light and heavy vehicle movements on surrounding roads, and local road closures. All vehicles will be turned off when not in use, non-tonal reversing alarms will be fitted to plant and machinery and trucks will avoid reversing into and on site, where feasible
- Temporary lighting to ensure a safe worksite will be directed away from properties
- Communication will be limited to radios only when moving and unloading equipment, with no use of horns or loud radios
- Traffic control and signage to safely assist motorists, pedestrians, and cyclists.

Equipment used:

Equipment used will include, but is not limited to, excavators, cranes, dozers, graders, rollers, vacuum truck, water carts, heavy and light site vehicles, watercart, generators, survey equipment (marker pegs and pickets, flagging) and traffic management devices, concrete agitators, water carts, pneumatic drills, concrete saws, bobcats, chain saws, telehandler and hand tools.

Changes to traffic, pedestrian, and cyclist routes:

During these works, traffic control will be in place to assist motorists, pedestrians and cyclists with any changes to traffic conditions. This may include contraflow and stop-slow traffic controls. The times of these changes will vary and are dependent on road authority approvals. Access to driveways and buildings will be maintained at all times.

Residents will be separately notified if access to driveways will be affected, or access to private property is requested.

Three monthly out-of-hours lookahead activities:

Activity	Equipment	Work hours	Timing
SSTOM works – Orchard Hills Metro Station site			
Concrete pours and finishing works station box base slab and walls	Concrete pump, vibrators, concrete trucks, generators and lighting towers	6pm to 10pm, Monday to Friday 1pm to 4pm, Saturdays	June – October 2024
Concrete batching plant operations	Concrete trucks, generators, mixers, compressors and lighting towers	24 hours a day, seven days a week	July 2024 – 2026
Oversized plant and equipment activities	Traffic management, light and heavy vehicles, generators, lighting towers and mobile cranes	10pm to 7am	Ongoing
Dewatering activities	Water treatment plant, water pumps, light vehicles, generators and lighting towers.	As required.	Ongoing
SSTOM works – Stabling Maintenance Facility site			
Extended work hours for major earthworks	Excavators, dump trucks, graders, compactors, drum rollers, dozers, trucks, generators and lighting towers	6am to 7am, Monday to Friday 1pm to 4pm, Saturdays	June – October 2024
Long weekend possession - 132kv power supply installation on Patons Lane	Excavators, trucks, mobile cranes, compactors, vibrators, generators and lighting towers	6pm Friday 4 October to 6pm Tuesday 8 October 2024	October 2024 (October long weekend)
Dewatering activities	Water treatment plant, water pumps, light vehicles, generators and lighting towers.	As required.	Ongoing
SBT works – Orchard Hills			
Excavation and removal of materials inside the station box.	Excavation and removal of materials inside the station box.	6pm to 7am Monday to Friday 1pm to 4pm Saturdays	Ongoing – August 2024

Feedback:

Detailed Noise and Vibration Impact Statements (DNVIS) have been prepared, including proposed mitigation measures based on noise modelling.

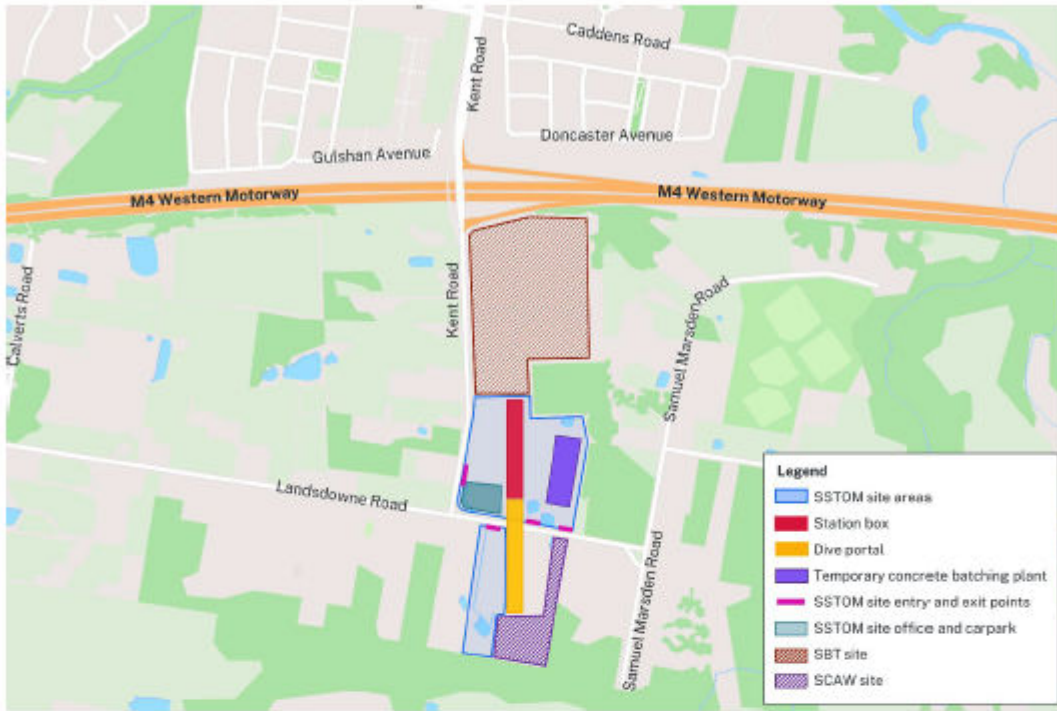
We invite your feedback on appropriate respite periods or mitigation measures that may be required to your specific circumstances.

The SSTOM and SCAW Community Engagement strategies are now online.

Please visit www.parklifemetro.com.au/SSTOMCCS or www.cpbcontractors.cc/SCAWstrategy to view the respective strategy and contact us to provide feedback.



Orchard Hills Metro Station work location:





Please join us for a free Community Day

Register by scanning the QR code





Food



Activities



Project tours

Sunday 7 July 2024
10am to 2pm

Learn about the Sydney Metro – Western Sydney Airport project and hear from our staff!



Australian Government



NSW GOVERNMENT



sydney METRO

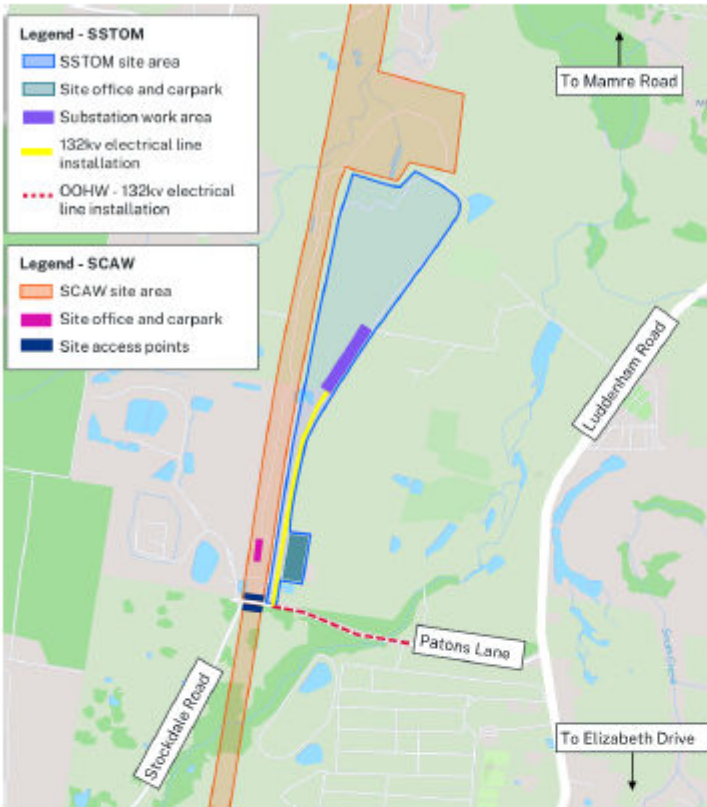
Sydney Metro – Western Sydney Airport Community Day

Come join us for an exclusive insider's tour highlighting the ongoing construction of the new metro railway line. This rare chance allows you to witness firsthand the development of the new metro bridge over the future M12 motorway and the progress at Luddenham and Bradfield Metro Stations.

Our knowledgeable tour guides will be members from our construction teams, ready to provide detailed insights and answer any questions you have about the project.

Be sure to register for the day via the [QR code](#) or visit [Sydney Metro – Western Sydney Airport Community Open Day | Register](#)

Stabling Maintenance Facility work location:



Contact us:

Please contact the community team on 1800 717 703 or sydneymetrowsa@transport.nsw.gov.au if you have any questions, complaints or would like to provide feedback about the work. We will continue to keep you updated on the progress of work in your area.

If you would prefer to receive updates by email, please contact us and we will add you to the distribution list.

Thank you for your cooperation while we complete this essential work.



Sydney Metro has launched Sydney Metro Connect – a new way to stay informed.

Access information in over 100 languages Download Sydney Metro Connect from the App store or get it on Google Play.

For more information contact



24-hour Community Information Line 1800 717 703



sydneymetrowsa@transport.nsw.gov.au



Sydney Metro – Western Sydney Airport
PO Box K659, Haymarket NSW 1240



If you need help understanding this information, please contact the Translating and Interpreting Service on 131 450 and ask them to call us on 1800 717 703.

Extended work hours for concrete pours - Orchard Hills Metro Station

17 June 2024

From **Monday 24 June 2024** until **October 2024**, extended work hours will be in place to complete large concrete pours and finishing works within the station box for the Orchard Hills Metro Station base slab. Extended work hours will from **7am to 10pm, Monday to Friday**, and **8am to 4pm Saturdays**.

Equipment used will include, but is not limited to concrete pumps and concrete trucks, vibrators, generators, light vehicles and lighting towers.

We will take every step possible to minimise all impacts, however there may be times when the work will be noisy. Mitigation measures will be in place to minimise the impacts during our work, including noise blankets around our work area.

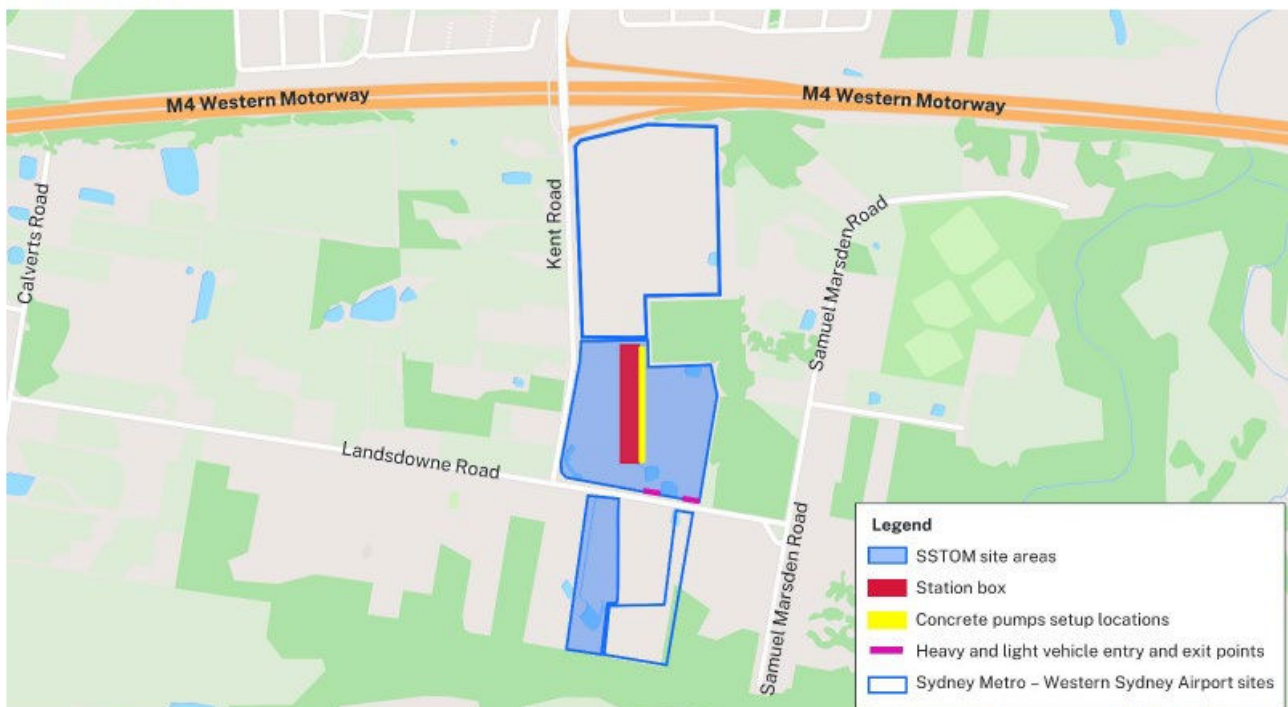
Please contact Jess, the dedicated Place Manager from the Parklife Metro community team on **1800 717 703** or email sydneymetrowsa@transport.nsw.gov.au if you have any questions or would like to provide feedback about the work.

Thank you for your patience during this essential work.



Sydney Metro – Western Sydney Airport – PLM00036

Work location:



Access information in over 100 languages

Download Sydney Metro Connect from the App store or get it on Google Play.

Sydney Metro – Western Sydney Airport – PLM00036

Appendix C Impacted properties and consultation records

No.	Address	Suburb	State	Postcode	Feedback received	Consultation
40A	Lansdowne Road	Orchard Hills	NSW	2748	Y	No issues or concerns regarding the proposed extended work hours for concrete pours.
40B	Lansdowne Road	Orchard Hills	NSW	2748	Y	No issues or concerns regarding the proposed extended work hours for concrete pours.
107	Kent Road	Orchard Hills	NSW	2748	Y	No issues or concerns regarding the proposed extended work hours for concrete pours.
116	Samuel Marsden Road	Orchard Hills	NSW	2748	Y	No issues or concerns regarding the proposed extended work hours for concrete pours.
84-90	Samuel Marsden Road	Orchard Hills	NSW	2748	Y	No issues or concerns regarding the proposed extended work hours for concrete pours.
44-66	Samuel Marsden Road	Orchard Hills	NSW	2748	Y	No issues or concerns regarding the proposed extended work hours for concrete pours.
83-95	Samuel Marsden Road	Orchard Hills	NSW	2748	Y	No issues or concerns regarding the proposed extended work hours for concrete pours.
83-95A	Samuel Marsden Road	Orchard Hills	NSW	2748	Y	No issues or concerns regarding the proposed extended work hours for concrete pours.
108	Samuel Marsden Road	Orchard Hills	NSW	2748	Y	No issues or concerns regarding the proposed extended work hours for concrete pours.
97-107	Samuel Marsden Road	Orchard Hills	NSW	2748	Y	No issues or concerns regarding the proposed extended work hours for concrete pours.
109-119	Samuel Marsden Road	Orchard Hills	NSW	2748	Y	No issues or concerns regarding the proposed extended work hours for concrete pours.
14	Lansdowne Road	Orchard Hills	NSW	2748	Y	No issues or concerns regarding the proposed extended work hours for concrete pours.
16-20	Lansdowne Road	Orchard Hills	NSW	2748	Y	No issues or concerns regarding the proposed extended work hours for concrete pours.
40	Lansdowne Road	Orchard Hills	NSW	2748	Y	No issues or concerns regarding the proposed extended work hours for concrete pours.
54	Lansdowne Road	Orchard Hills	NSW	2748	N	No feedback received.
64	Doncaster Avenue	Claremont Meadows	NSW	2747	N	No feedback received.
62	Doncaster Avenue	Claremont Meadows	NSW	2747	N	No feedback received.
60	Doncaster Avenue	Claremont Meadows	NSW	2747	N	No feedback received.
58	Doncaster Avenue	Claremont Meadows	NSW	2747	N	No feedback received.
56	Doncaster Avenue	Claremont Meadows	NSW	2747	N	No feedback received.
54	Doncaster Avenue	Claremont Meadows	NSW	2747	N	No feedback received.
52	Doncaster Avenue	Claremont Meadows	NSW	2747	N	No feedback received.
50	Doncaster Avenue	Claremont Meadows	NSW	2747	N	No feedback received.

48	Doncaster Avenue	Claremont Meadows	NSW	2747	N	No feedback received.
46	Doncaster Avenue	Claremont Meadows	NSW	2747	N	No feedback received.
44	Doncaster Avenue	Claremont Meadows	NSW	2747	N	No feedback received.
42	Doncaster Avenue	Claremont Meadows	NSW	2747	N	No feedback received.
40	Doncaster Avenue	Claremont Meadows	NSW	2747	N	No feedback received.
38	Doncaster Avenue	Claremont Meadows	NSW	2747	N	No feedback received.
36	Doncaster Avenue	Claremont Meadows	NSW	2747	N	No feedback received.
34	Doncaster Avenue	Claremont Meadows	NSW	2747	N	No feedback received.
32	Doncaster Avenue	Claremont Meadows	NSW	2747	N	No feedback received.
30	Doncaster Avenue	Claremont Meadows	NSW	2747	N	No feedback received.
28	Doncaster Avenue	Claremont Meadows	NSW	2747	N	No feedback received.
26	Doncaster Avenue	Claremont Meadows	NSW	2747	N	No feedback received.
23	Gulshan Avenue	Claremont Meadows	NSW	2747	N	No feedback received.
21	Gulshan Avenue	Claremont Meadows	NSW	2747	N	No feedback received.
128	Samuel Marsden Road	Orchard Hills	NSW	2748	N	No feedback received.
138	Samuel Marsden Road	Orchard Hills	NSW	2748	N	No feedback received.
124	Samuel Marsden Road	Orchard Hills	NSW	2748	N	No feedback received.
76-82	Samuel Marsden Road	Orchard Hills	NSW	2748	N	No feedback received.
68-74	Samuel Marsden Road	Orchard Hills	NSW	2748	N	No feedback received.
63	Samuel Marsden Road	Orchard Hills	NSW	2748	N	No feedback received.
71-81	Samuel Marsden Road	Orchard Hills	NSW	2748	N	No feedback received.
123A	Samuel Marsden Road	Orchard Hills	NSW	2748	N	No feedback received.
2	Lansdowne Road	Orchard Hills	NSW	2748	N	No feedback received.
60	Lansdowne Road	Orchard Hills	NSW	2748	N	No feedback received.
68	Lansdowne Road	Orchard Hills	NSW	2748	N	No feedback received.
70-74	Lansdowne Road	Orchard Hills	NSW	2748	N	No feedback received.
80	Lansdowne Road	Orchard Hills	NSW	2748	N	No feedback received.
82	Lansdowne Road	Orchard Hills	NSW	2748	N	No feedback received.
49	Lansdowne Road	Orchard Hills	NSW	2748	N	No feedback received.
101	Kent Road	Orchard Hills	NSW	2748	N	No feedback received.
95	Kent Road	Orchard Hills	NSW	2748	N	No feedback received.
89	Kent Road	Orchard Hills	NSW	2748	N	No feedback received.
89A	Kent Road	Orchard Hills	NSW	2748	N	No feedback received.
85	Kent Road	Orchard Hills	NSW	2748	N	No feedback received.
77	Kent Road	Orchard Hills	NSW	2748	N	No feedback received.
63-67	Kent Road	Orchard Hills	NSW	2748	N	No feedback received.
57	Kent Road	Orchard Hills	NSW	2748	N	No feedback received.
51-55	Kent Road	Orchard Hills	NSW	2748	N	No feedback received.
24	Doncaster Avenue	Claremont Meadows	NSW	2747	N	No feedback received.

22	Doncaster Avenue	Claremont Meadows	NSW	2747	N	No feedback received.
20	Doncaster Avenue	Claremont Meadows	NSW	2747	N	No feedback received.
9	Doncaster Avenue	Claremont Meadows	NSW	2747	N	No feedback received.
11-13	Doncaster Avenue	Claremont Meadows	NSW	2747	N	No feedback received.
5	Doncaster Avenue	Claremont Meadows	NSW	2747	N	No feedback received.
3	Doncaster Avenue	Claremont Meadows	NSW	2747	N	No feedback received.
1	Doncaster Avenue	Claremont Meadows	NSW	2747	N	No feedback received.
15A	Doncaster Avenue	Claremont Meadows	NSW	2747	N	No feedback received.
45	Doncaster Avenue	Claremont Meadows	NSW	2747	N	No feedback received.
47	Doncaster Avenue	Claremont Meadows	NSW	2747	N	No feedback received.
53	Doncaster Avenue	Claremont Meadows	NSW	2747	N	No feedback received.
55	Doncaster Avenue	Claremont Meadows	NSW	2747	N	No feedback received.
59	Doncaster Avenue	Claremont Meadows	NSW	2747	N	No feedback received.
61	Doncaster Avenue	Claremont Meadows	NSW	2747	N	No feedback received.
63	Doncaster Avenue	Claremont Meadows	NSW	2747	N	No feedback received.
65	Doncaster Avenue	Claremont Meadows	NSW	2747	N	No feedback received.
67	Doncaster Avenue	Claremont Meadows	NSW	2747	N	No feedback received.
69	Doncaster Avenue	Claremont Meadows	NSW	2747	N	No feedback received.
71	Doncaster Avenue	Claremont Meadows	NSW	2747	N	No feedback received.
75	Doncaster Avenue	Claremont Meadows	NSW	2747	N	No feedback received.
81	Doncaster Avenue	Claremont Meadows	NSW	2747	N	No feedback received.
77	Doncaster Avenue	Claremont Meadows	NSW	2747	N	No feedback received.
92	Doncaster Avenue	Claremont Meadows	NSW	2747	N	No feedback received.
86	Doncaster Avenue	Claremont Meadows	NSW	2747	N	No feedback received.
84	Doncaster Avenue	Claremont Meadows	NSW	2747	N	No feedback received.
82	Doncaster Avenue	Claremont Meadows	NSW	2747	N	No feedback received.
68	Doncaster Avenue	Claremont Meadows	NSW	2747	N	No feedback received.
72	Doncaster Avenue	Claremont Meadows	NSW	2747	N	No feedback received.
74	Doncaster Avenue	Claremont Meadows	NSW	2747	N	No feedback received.
76	Doncaster Avenue	Claremont Meadows	NSW	2747	N	No feedback received.
1	Brushwood Street	Claremont Meadows	NSW	2747	N	No feedback received.
7	Brushwood Street	Claremont Meadows	NSW	2747	N	No feedback received.
10	Brushwood Street	Claremont Meadows	NSW	2747	N	No feedback received.
12	Brushwood Street	Claremont Meadows	NSW	2747	N	No feedback received.
14	Brushwood Street	Claremont Meadows	NSW	2747	N	No feedback received.
8	Brushwood Street	Claremont Meadows	NSW	2747	N	No feedback received.
6	Brushwood Street	Claremont Meadows	NSW	2747	N	No feedback received.
4	Brushwood Street	Claremont Meadows	NSW	2747	N	No feedback received.
15	Springdale Street	Claremont Meadows	NSW	2747	N	No feedback received.

13	Springdale Street	Claremont Meadows	NSW	2747	N	No feedback received.
11	Springdale Street	Claremont Meadows	NSW	2747	N	No feedback received.
9	Springdale Street	Claremont Meadows	NSW	2747	N	No feedback received.
7	Springdale Street	Claremont Meadows	NSW	2747	N	No feedback received.
5	Springdale Street	Claremont Meadows	NSW	2747	N	No feedback received.
3	Springdale Street	Claremont Meadows	NSW	2747	N	No feedback received.
1	Springdale Street	Claremont Meadows	NSW	2747	N	No feedback received.
2	Springdale Street	Claremont Meadows	NSW	2747	N	No feedback received.
4	Springdale Street	Claremont Meadows	NSW	2747	N	No feedback received.
8	Springdale Street	Claremont Meadows	NSW	2747	N	No feedback received.
10	Springdale Street	Claremont Meadows	NSW	2747	N	No feedback received.
12	Springdale Street	Claremont Meadows	NSW	2747	N	No feedback received.
19	Silverwood Way	Claremont Meadows	NSW	2747	N	No feedback received.
13	Silverwood Way	Claremont Meadows	NSW	2747	N	No feedback received.
3	Silverwood Way	Claremont Meadows	NSW	2747	N	No feedback received.
5	Silverwood Way	Claremont Meadows	NSW	2747	N	No feedback received.
7	Silverwood Way	Claremont Meadows	NSW	2747	N	No feedback received.
9	Silverwood Way	Claremont Meadows	NSW	2747	N	No feedback received.
17	Silverwood Way	Claremont Meadows	NSW	2747	N	No feedback received.
15	Silverwood Way	Claremont Meadows	NSW	2747	N	No feedback received.
8	Burlington Street	Claremont Meadows	NSW	2747	N	No feedback received.
6	Burlington Street	Claremont Meadows	NSW	2747	N	No feedback received.
4	Burlington Street	Claremont Meadows	NSW	2747	N	No feedback received.
5	Burlington Street	Claremont Meadows	NSW	2747	N	No feedback received.
2	Burlington Street	Claremont Meadows	NSW	2747	N	No feedback received.
3	Burlington Street	Claremont Meadows	NSW	2747	N	No feedback received.
7-11	Burlington Street	Claremont Meadows	NSW	2747	N	No feedback received.
12	Iluka Road	Claremont Meadows	NSW	2747	N	No feedback received.
2	Iluka Road	Claremont Meadows	NSW	2747	N	No feedback received.
4	Iluka Road	Claremont Meadows	NSW	2747	N	No feedback received.
6	Iluka Road	Claremont Meadows	NSW	2747	N	No feedback received.
8	Iluka Road	Claremont Meadows	NSW	2747	N	No feedback received.
10	Iluka Road	Claremont Meadows	NSW	2747	N	No feedback received.
15	Iluka Road	Claremont Meadows	NSW	2747	N	No feedback received.
13	Iluka Road	Claremont Meadows	NSW	2747	N	No feedback received.
11	Iluka Road	Claremont Meadows	NSW	2747	N	No feedback received.
9	Iluka Road	Claremont Meadows	NSW	2747	N	No feedback received.
7	Iluka Road	Claremont Meadows	NSW	2747	N	No feedback received.
5	Iluka Road	Claremont Meadows	NSW	2747	N	No feedback received.

3	Iluka Road	Claremont Meadows	NSW	2747	N	No feedback received.
27	Gulshan Avenue	Claremont Meadows	NSW	2747	N	No feedback received.
25	Gulshan Avenue	Claremont Meadows	NSW	2747	N	No feedback received.
19	Gulshan Avenue	Claremont Meadows	NSW	2747	N	No feedback received.
17	Gulshan Avenue	Claremont Meadows	NSW	2747	N	No feedback received.
15	Gulshan Avenue	Claremont Meadows	NSW	2747	N	No feedback received.
13	Gulshan Avenue	Claremont Meadows	NSW	2747	N	No feedback received.
11	Gulshan Avenue	Claremont Meadows	NSW	2747	N	No feedback received.
9	Gulshan Avenue	Claremont Meadows	NSW	2747	N	No feedback received.
7	Gulshan Avenue	Claremont Meadows	NSW	2747	N	No feedback received.
5	Gulshan Avenue	Claremont Meadows	NSW	2747	N	No feedback received.
3	Gulshan Avenue	Claremont Meadows	NSW	2747	N	No feedback received.
4	Punjab Street	Claremont Meadows	NSW	2747	N	No feedback received.
6	Punjab Street	Claremont Meadows	NSW	2747	N	No feedback received.
7	Punjab Street	Claremont Meadows	NSW	2747	N	No feedback received.
5	Punjab Street	Claremont Meadows	NSW	2747	N	No feedback received.
30	Punjab Street	Claremont Meadows	NSW	2747	N	No feedback received.
3	Dhiman Street	Claremont Meadows	NSW	2747	N	No feedback received.
5	Dhiman Street	Claremont Meadows	NSW	2747	N	No feedback received.
4	Dhiman Street	Claremont Meadows	NSW	2747	N	No feedback received.
6	Dhiman Street	Claremont Meadows	NSW	2747	N	No feedback received.
2	Coachwood Drive	Claremont Meadows	NSW	2747	N	No feedback received.
4	Coachwood Drive	Claremont Meadows	NSW	2747	N	No feedback received.
8	Coachwood Drive	Claremont Meadows	NSW	2747	N	No feedback received.
10	Coachwood Drive	Claremont Meadows	NSW	2747	N	No feedback received.
12	Coachwood Drive	Claremont Meadows	NSW	2747	N	No feedback received.
14	Coachwood Drive	Claremont Meadows	NSW	2747	N	No feedback received.
16	Coachwood Drive	Claremont Meadows	NSW	2747	N	No feedback received.
18	Coachwood Drive	Claremont Meadows	NSW	2747	N	No feedback received.
20	Coachwood Drive	Claremont Meadows	NSW	2747	N	No feedback received.
22	Coachwood Drive	Claremont Meadows	NSW	2747	N	No feedback received.
2	Lomandra Street	Claremont Meadows	NSW	2747	N	No feedback received.
1	Lomandra Street	Claremont Meadows	NSW	2747	N	No feedback received.
4	Lomandra Street	Claremont Meadows	NSW	2747	N	No feedback received.
6	Lomandra Street	Claremont Meadows	NSW	2747	N	No feedback received.
8	Lomandra Street	Claremont Meadows	NSW	2747	N	No feedback received.
3	Lomandra Street	Claremont Meadows	NSW	2747	N	No feedback received.
5	Lomandra Street	Claremont Meadows	NSW	2747	N	No feedback received.
	Lomandra Street	Claremont Meadows	NSW	2747	N	No feedback received.

5	Central Park Drive	Claremont Meadows	NSW	2747	N	No feedback received.
3	Central Park Drive	Claremont Meadows	NSW	2747	N	No feedback received.
7	Central Park Drive	Claremont Meadows	NSW	2747	N	No feedback received.
9	Central Park Drive	Claremont Meadows	NSW	2747	N	No feedback received.
11	Central Park Drive	Claremont Meadows	NSW	2747	N	No feedback received.
13	Central Park Drive	Claremont Meadows	NSW	2747	N	No feedback received.
15	Central Park Drive	Claremont Meadows	NSW	2747	N	No feedback received.
17	Central Park Drive	Claremont Meadows	NSW	2747	N	No feedback received.
21	Central Park Drive	Claremont Meadows	NSW	2747	N	No feedback received.
23	Central Park Drive	Claremont Meadows	NSW	2747	N	No feedback received.
27	Central Park Drive	Claremont Meadows	NSW	2747	N	No feedback received.
29	Central Park Drive	Claremont Meadows	NSW	2747	N	No feedback received.
31	Central Park Drive	Claremont Meadows	NSW	2747	N	No feedback received.
32	Central Park Drive	Claremont Meadows	NSW	2747	N	No feedback received.
34	Central Park Drive	Claremont Meadows	NSW	2747	N	No feedback received.
36	Central Park Drive	Claremont Meadows	NSW	2747	N	No feedback received.
44	Central Park Drive	Claremont Meadows	NSW	2747	N	No feedback received.
41	Central Park Drive	Claremont Meadows	NSW	2747	N	No feedback received.
43	Central Park Drive	Claremont Meadows	NSW	2747	N	No feedback received.
47	Central Park Drive	Claremont Meadows	NSW	2747	N	No feedback received.
53	Central Park Drive	Claremont Meadows	NSW	2747	N	No feedback received.
48	Central Park Drive	Claremont Meadows	NSW	2747	N	No feedback received.
50	Central Park Drive	Claremont Meadows	NSW	2747	N	No feedback received.
52	Central Park Drive	Claremont Meadows	NSW	2747	N	No feedback received.
54	Central Park Drive	Claremont Meadows	NSW	2747	N	No feedback received.
1	Galea Street	Claremont Meadows	NSW	2747	N	No feedback received.
3	Galea Street	Claremont Meadows	NSW	2747	N	No feedback received.
418	Caddens Road	Claremont Meadows	NSW	2747	N	No feedback received.
400	Caddens Road	Claremont Meadows	NSW	2747	N	No feedback received.
398	Caddens Road	Claremont Meadows	NSW	2747	N	No feedback received.
396	Caddens Road	Claremont Meadows	NSW	2747	N	No feedback received.
N/A	Caddens Road	Claremont Meadows	NSW	2747	N	No feedback received.
384	Caddens Road	Claremont Meadows	NSW	2747	N	No feedback received.
382	Caddens Road	Claremont Meadows	NSW	2747	N	No feedback received.
380	Caddens Road	Claremont Meadows	NSW	2747	N	No feedback received.
376	Caddens Road	Claremont Meadows	NSW	2747	N	No feedback received.
374	Caddens Road	Claremont Meadows	NSW	2747	N	No feedback received.
372	Caddens Road	Claremont Meadows	NSW	2747	N	No feedback received.
370	Caddens Road	Claremont Meadows	NSW	2747	N	No feedback received.

364	Caddens Road	Claremont Meadows	NSW	2747	N	No feedback received.
362A	Caddens Road	Claremont Meadows	NSW	2747	N	No feedback received.
362	Caddens Road	Claremont Meadows	NSW	2747	N	No feedback received.
360	Caddens Road	Claremont Meadows	NSW	2747	N	No feedback received.
358	Caddens Road	Claremont Meadows	NSW	2747	N	No feedback received.
356	Caddens Road	Claremont Meadows	NSW	2747	N	No feedback received.
354	Caddens Road	Claremont Meadows	NSW	2747	N	No feedback received.
352	Caddens Road	Claremont Meadows	NSW	2747	N	No feedback received.
381	Caddens Road	Claremont Meadows	NSW	2747	N	No feedback received.
379	Caddens Road	Claremont Meadows	NSW	2747	N	No feedback received.
377	Caddens Road	Claremont Meadows	NSW	2747	N	No feedback received.
377A	Caddens Road	Claremont Meadows	NSW	2747	N	No feedback received.
373-375	Caddens Road	Claremont Meadows	NSW	2747	N	No feedback received.
369-371	Caddens Road	Claremont Meadows	NSW	2747	N	No feedback received.
365	Caddens Road	Claremont Meadows	NSW	2747	N	No feedback received.
363	Caddens Road	Claremont Meadows	NSW	2747	N	No feedback received.
361	Caddens Road	Claremont Meadows	NSW	2747	N	No feedback received.
359	Caddens Road	Claremont Meadows	NSW	2747	N	No feedback received.
357	Caddens Road	Claremont Meadows	NSW	2747	N	No feedback received.
355	Caddens Road	Claremont Meadows	NSW	2747	N	No feedback received.
353	Caddens Road	Claremont Meadows	NSW	2747	N	No feedback received.
351	Caddens Road	Claremont Meadows	NSW	2747	N	No feedback received.
349	Caddens Road	Claremont Meadows	NSW	2747	N	No feedback received.
347	Caddens Road	Claremont Meadows	NSW	2747	N	No feedback received.
345	Caddens Road	Claremont Meadows	NSW	2747	N	No feedback received.
343	Caddens Road	Claremont Meadows	NSW	2747	N	No feedback received.
8	Kindlebark Close	Claremont Meadows	NSW	2747	N	No feedback received.
7	Kindlebark Close	Claremont Meadows	NSW	2747	N	No feedback received.
6	Kindlebark Close	Claremont Meadows	NSW	2747	N	No feedback received.
4	Kindlebark Close	Claremont Meadows	NSW	2747	N	No feedback received.
3	Kindlebark Close	Claremont Meadows	NSW	2747	N	No feedback received.
2	Kindlebark Close	Claremont Meadows	NSW	2747	N	No feedback received.
19	Kindlebark Close	Claremont Meadows	NSW	2747	N	No feedback received.
2	Caulfield Road	Claremont Meadows	NSW	2747	N	No feedback received.
4	Caulfield Road	Claremont Meadows	NSW	2747	N	No feedback received.
6	Caulfield Road	Claremont Meadows	NSW	2747	N	No feedback received.
8	Caulfield Road	Claremont Meadows	NSW	2747	N	No feedback received.
10	Caulfield Road	Claremont Meadows	NSW	2747	N	No feedback received.
12	Caulfield Road	Claremont Meadows	NSW	2747	N	No feedback received.

16	Caulfield Road	Claremont Meadows	NSW	2747	N	No feedback received.
13	Caulfield Road	Claremont Meadows	NSW	2747	N	No feedback received.
20	Caulfield Road	Claremont Meadows	NSW	2747	N	No feedback received.
24	Caulfield Road	Claremont Meadows	NSW	2747	N	No feedback received.
1	Caulfield Road	Claremont Meadows	NSW	2747	N	No feedback received.
5	Caulfield Road	Claremont Meadows	NSW	2747	N	No feedback received.
7	Caulfield Road	Claremont Meadows	NSW	2747	N	No feedback received.
17	Equestrian Circuit	Claremont Meadows	NSW	2747	N	No feedback received.
15	Equestrian Circuit	Claremont Meadows	NSW	2747	N	No feedback received.
13	Equestrian Circuit	Claremont Meadows	NSW	2747	N	No feedback received.
11	Equestrian Circuit	Claremont Meadows	NSW	2747	N	No feedback received.
9	Equestrian Circuit	Claremont Meadows	NSW	2747	N	No feedback received.
5	Equestrian Circuit	Claremont Meadows	NSW	2747	N	No feedback received.
3	Equestrian Circuit	Claremont Meadows	NSW	2747	N	No feedback received.
75	Blackwood Street	Claremont Meadows	NSW	2747	N	No feedback received.
75A	Blackwood Street	Claremont Meadows	NSW	2747	N	No feedback received.
73	Blackwood Street	Claremont Meadows	NSW	2747	N	No feedback received.
73A	Blackwood Street	Claremont Meadows	NSW	2747	N	No feedback received.
61-69	Blackwood Street	Claremont Meadows	NSW	2747	N	No feedback received.
67	Blackwood Street	Claremont Meadows	NSW	2747	N	No feedback received.
65	Blackwood Street	Claremont Meadows	NSW	2747	N	No feedback received.
59	Blackwood Street	Claremont Meadows	NSW	2747	N	No feedback received.
57	Blackwood Street	Claremont Meadows	NSW	2747	N	No feedback received.
55	Blackwood Street	Claremont Meadows	NSW	2747	N	No feedback received.
47	Blackwood Street	Claremont Meadows	NSW	2747	N	No feedback received.
15	Blackwood Street	Claremont Meadows	NSW	2747	N	No feedback received.
23	Blackwood Street	Claremont Meadows	NSW	2747	N	No feedback received.
13B	Harrier Place	Claremont Meadows	NSW	2747	N	No feedback received.
14	Harrier Place	Claremont Meadows	NSW	2747	N	No feedback received.
15	Harrier Place	Claremont Meadows	NSW	2747	N	No feedback received.
16	Harrier Place	Claremont Meadows	NSW	2747	N	No feedback received.
17	Harrier Place	Claremont Meadows	NSW	2747	N	No feedback received.
20	Harrier Place	Claremont Meadows	NSW	2747	N	No feedback received.
30	Sandpiper Crescent	Claremont Meadows	NSW	2747	N	No feedback received.
32	Sandpiper Crescent	Claremont Meadows	NSW	2747	N	No feedback received.
36	Sandpiper Crescent	Claremont Meadows	NSW	2747	N	No feedback received.
38	Sandpiper Crescent	Claremont Meadows	NSW	2747	N	No feedback received.
42	Sandpiper Crescent	Claremont Meadows	NSW	2747	N	No feedback received.
7	Egret Place	Claremont Meadows	NSW	2747	N	No feedback received.

3A	Josquin Way	Claremont Meadows	NSW	2747	N	No feedback received.
2	Harrier Place	Claremont Meadows	NSW	2747	N	No feedback received.
5	Harrier Place	Claremont Meadows	NSW	2747	N	No feedback received.
7	Harrier Place	Claremont Meadows	NSW	2747	N	No feedback received.
8	Harrier Place	Claremont Meadows	NSW	2747	N	No feedback received.
9	Harrier Place	Claremont Meadows	NSW	2747	N	No feedback received.
15	Wren Place	Claremont Meadows	NSW	2747	N	No feedback received.
13	Wren Place	Claremont Meadows	NSW	2747	N	No feedback received.
12	Wren Place	Claremont Meadows	NSW	2747	N	No feedback received.
21	Falcon Crescent	Claremont Meadows	NSW	2747	N	No feedback received.
8	Bushtark Place	Claremont Meadows	NSW	2747	N	No feedback received.
16	Sandpiper Crescent	Claremont Meadows	NSW	2747	N	No feedback received.
14	Sandpiper Crescent	Claremont Meadows	NSW	2747	N	No feedback received.
310	Caddens Road	Claremont Meadows	NSW	2747	N	No feedback received.
318	Caddens Road	Claremont Meadows	NSW	2747	N	No feedback received.
324	Caddens Road	Claremont Meadows	NSW	2747	N	No feedback received.
328	Caddens Road	Claremont Meadows	NSW	2747	N	No feedback received.
18	Haryana Road	Claremont Meadows	NSW	2747	N	No feedback received.
20	Haryana Road	Claremont Meadows	NSW	2747	N	No feedback received.
22	Haryana Road	Claremont Meadows	NSW	2747	N	No feedback received.
24	Haryana Road	Claremont Meadows	NSW	2747	N	No feedback received.
13	Haryana Road	Claremont Meadows	NSW	2747	N	No feedback received.
15	Haryana Road	Claremont Meadows	NSW	2747	N	No feedback received.
9	Haryana Road	Claremont Meadows	NSW	2747	N	No feedback received.
6	Shapla Road	Claremont Meadows	NSW	2747	N	No feedback received.
10	Shapla Road	Claremont Meadows	NSW	2747	N	No feedback received.
12	Shapla Road	Claremont Meadows	NSW	2747	N	No feedback received.
5	Shapla Road	Claremont Meadows	NSW	2747	N	No feedback received.
9	Shapla Road	Claremont Meadows	NSW	2747	N	No feedback received.
11	Shapla Road	Claremont Meadows	NSW	2747	N	No feedback received.
6	Amit Road	Claremont Meadows	NSW	2747	N	No feedback received.
10	Amit Road	Claremont Meadows	NSW	2747	N	No feedback received.
12	Amit Road	Claremont Meadows	NSW	2747	N	No feedback received.
5	Amit Road	Claremont Meadows	NSW	2747	N	No feedback received.
7	Amit Road	Claremont Meadows	NSW	2747	N	No feedback received.
9	Amit Road	Claremont Meadows	NSW	2747	N	No feedback received.
25	Silkwood Avenue	Claremont Meadows	NSW	2747	N	No feedback received.
23	Silkwood Avenue	Claremont Meadows	NSW	2747	N	No feedback received.
30	Silkwood Avenue	Claremont Meadows	NSW	2747	N	No feedback received.

28	Silkwood Avenue	Claremont Meadows	NSW	2747	N	No feedback received.
2	Buttercup Street	Claremont Meadows	NSW	2747	N	No feedback received.
6	Buttercup Street	Claremont Meadows	NSW	2747	N	No feedback received.
1	Cherrywood Street	Claremont Meadows	NSW	2747	N	No feedback received.
3	Cherrywood Street	Claremont Meadows	NSW	2747	N	No feedback received.
5	Cherrywood Street	Claremont Meadows	NSW	2747	N	No feedback received.
17	Cherrywood Street	Claremont Meadows	NSW	2747	N	No feedback received.
15	Cherrywood Street	Claremont Meadows	NSW	2747	N	No feedback received.
11	Cherrywood Street	Claremont Meadows	NSW	2747	N	No feedback received.
108	Redgum Street	Claremont Meadows	NSW	2747	N	No feedback received.
7	Redgum Street	Claremont Meadows	NSW	2747	N	No feedback received.
3	Silkwood Avenue	Claremont Meadows	NSW	2747	N	No feedback received.
8	Watercress Street	Claremont Meadows	NSW	2747	N	No feedback received.
22	Watercress Street	Claremont Meadows	NSW	2747	N	No feedback received.
27	Watercress Street	Claremont Meadows	NSW	2747	N	No feedback received.
25	Watercress Street	Claremont Meadows	NSW	2747	N	No feedback received.
4	White Cedar Avenue	Claremont Meadows	NSW	2747	N	No feedback received.
5	White Cedar Avenue	Claremont Meadows	NSW	2747	N	No feedback received.
3	White Cedar Avenue	Claremont Meadows	NSW	2747	N	No feedback received.
1	White Cedar Avenue	Claremont Meadows	NSW	2747	N	No feedback received.
13	White Cedar Avenue	Claremont Meadows	NSW	2747	N	No feedback received.
21	White Cedar Avenue	Claremont Meadows	NSW	2747	N	No feedback received.
4	Raintree Street	Claremont Meadows	NSW	2747	N	No feedback received.
6	Raintree Street	Claremont Meadows	NSW	2747	N	No feedback received.
5	Raintree Street	Claremont Meadows	NSW	2747	N	No feedback received.
5	Evergreen Street	Claremont Meadows	NSW	2747	N	No feedback received.
7	Evergreen Street	Claremont Meadows	NSW	2747	N	No feedback received.
6	Evergreen Street	Claremont Meadows	NSW	2747	N	No feedback received.
21	Pandorea Street	Claremont Meadows	NSW	2747	N	No feedback received.
22	Pandorea Street	Claremont Meadows	NSW	2747	N	No feedback received.
20	Pandorea Street	Claremont Meadows	NSW	2747	N	No feedback received.
16	Pandorea Street	Claremont Meadows	NSW	2747	N	No feedback received.
8	Pandorea Street	Claremont Meadows	NSW	2747	N	No feedback received.
17	Pandorea Street	Claremont Meadows	NSW	2747	N	No feedback received.
3	Pandorea Street	Claremont Meadows	NSW	2747	N	No feedback received.
7	Pandorea Street	Claremont Meadows	NSW	2747	N	No feedback received.
73	Pandorea Street	Claremont Meadows	NSW	2747	N	No feedback received.
63	Pandorea Street	Claremont Meadows	NSW	2747	N	No feedback received.
55	Pandorea Street	Claremont Meadows	NSW	2747	N	No feedback received.

55A	Pandorea Street	Claremont Meadows	NSW	2747	N	No feedback received.
49	Pandorea Street	Claremont Meadows	NSW	2747	N	No feedback received.
47	Pandorea Street	Claremont Meadows	NSW	2747	N	No feedback received.
45	Pandorea Street	Claremont Meadows	NSW	2747	N	No feedback received.
43	Pandorea Street	Claremont Meadows	NSW	2747	N	No feedback received.
39	Pandorea Street	Claremont Meadows	NSW	2747	N	No feedback received.
37	Pandorea Street	Claremont Meadows	NSW	2747	N	No feedback received.
35	Pandorea Street	Claremont Meadows	NSW	2747	N	No feedback received.
33	Pandorea Street	Claremont Meadows	NSW	2747	N	No feedback received.
3	Pandorea Street	Claremont Meadows	NSW	2747	N	No feedback received.
7	Pandorea Street	Claremont Meadows	NSW	2747	N	No feedback received.
73	Pandorea Street	Claremont Meadows	NSW	2747	N	No feedback received.
63	Pandorea Street	Claremont Meadows	NSW	2747	N	No feedback received.
55	Pandorea Street	Claremont Meadows	NSW	2747	N	No feedback received.
55A	Pandorea Street	Claremont Meadows	NSW	2747	N	No feedback received.
49	Pandorea Street	Claremont Meadows	NSW	2747	N	No feedback received.
47	Pandorea Street	Claremont Meadows	NSW	2747	N	No feedback received.
45	Pandorea Street	Claremont Meadows	NSW	2747	N	No feedback received.
43	Pandorea Street	Claremont Meadows	NSW	2747	N	No feedback received.
39	Pandorea Street	Claremont Meadows	NSW	2747	N	No feedback received.
37	Pandorea Street	Claremont Meadows	NSW	2747	N	No feedback received.
35	Pandorea Street	Claremont Meadows	NSW	2747	N	No feedback received.
33	Pandorea Street	Claremont Meadows	NSW	2747	N	No feedback received.

Appendix D Conditions of Approval (SSI 10051)

Conditions of Approval relevant to this Consultation Report.

Reference	Description	How is this addressed
E57	<p>Out-of-hours work – Community consultation on respite</p> <p>In order to undertake out-of-hours work outside the work hours specified under Condition E38, appropriate respite periods for the out-of-hours work must be identified in consultation with the community at each affected location on a regular basis. This consultation must include (but not be limited to) providing the community with:</p>	This document.
	(a) a progressive schedule for periods no less than three (3) months, of likely out-of-hours work;	Section 3. Appendix B
	(b) a description of the potential work, location and duration of the out-of-hours work;	Section 3.1 Appendix B
	(c) the noise characteristics and likely noise levels of the work; and	Section 2.3 Section 3.4 (Figure 3) Appendix B
	(d) likely mitigation and management measures which aim to achieve the relevant NMLs under Condition E43 (including the circumstances of when respite or relocation offers will be available and details about how the affected community can access these offers).	Section 2.2 Section 2.3 Appendix B
	<p>The outcomes of the community consultation, the identified respite periods and the scheduling of the likely out-of-hour work must be provided to the ER, EPA and the Planning Secretary prior to the out-of-hours work commencing.</p> <p><i>Note: Respite periods can be any combination of days or hours where out-of-hours work would not be more than 5 dB(A) above the RBL at any residence.</i></p>	This report.