

Sydney Metro WSA - SSTOM - OHE - E57 Orchard Hills Station Consultation report

SMWSASSM-PLD-OHE-SN100-CG-RPT-000001 (Rev 04)

Parklife Metro D&C

Version Control

Revision	Author	Date	Comments	Approved by
00		16/01/2024	Initial draft	
01		18/06/2024	Updated document	
02		13/09/2024	Updated document	
03		17/09/2024	Updated to address comments	
04		27/11/2024	Updated document	

Details of Revision Amendments Document Control

The Parklife Metro Environment Manager and the Parklife Metro Stakeholder & Community Engagement Director are responsible for ensuring this report is reviewed and approved and updated as required.

The Parklife Metro Community & Stakeholders Place Manager is responsible for the consultation and updating of this report, as required.

Amendments

Any revisions or amendments must be approved by the Environment Manager and the Stakeholder & Community Engagement Director before being distributed and implemented.

Contents

Glossary	5
1 Overview	6
1.1 Project background	6
1.2 SSTOM scope of works.....	6
1.2.1 Orchard Hills Metro Station	9
1.3 Out-of-hours scope of works	11
1.3.1 Ongoing oversized plant and equipment deliveries	11
1.3.2 Extended work hours for concreting and supporting form work	11
1.3.3 Concrete batching plant operations.....	11
1.3.4 Utility investigation works – Caddens and Kent Road	12
2 Conditions of Approval requirements	12
2.1 Out-of-hours Works – Community Consultation on Respite	12
2.2 Respite eligibility.....	12
2.3 Mitigation measures and planned respite	13
3 Consultation tools and channels	14
3.1 Communications tools	14
3.2 Communication activities timeline	16
3.3 Stakeholder list.....	17
3.4 Distribution maps.....	19

4	Conclusion.....	22
Appendix A	Noise modelling maps	23
Appendix B	Communication materials.....	35
Appendix C	Impacted properties and consultation records.....	42
Appendix D	Conditions of Approval (SSI 10051).....	44

Glossary

Standard terms and definitions.

TABLE 1. STANDARD TERMS

Term	Definition
Project	Sydney Metro – Western Sydney Airport
Parklife Metro	Consortium comprising entities of Plenary, Siemens Mobility, Siemens Financial Services, WeBuild and RATP Dev as successful contractors for the Sydney Metro Western Sydney Airport SSTOM Package.
Parklife Metro D&C	Parklife Metro Design and Construct. Consists of WeBuild S.P.A, Siemens Mobility Pty Ltd. Responsible for the construction of SSTOM Works

TABLE 2. ABBREVIATIONS

Term	Definition
CCMS	Construction Complaints Management System
CCS	Community Communications Strategy
CEMP	Construction Environmental Management Plan
CNVS	Sydney Metro Construction Noise and Vibration Standard
CNVIS	Construction Noise and Vibration Impact Statement
CNVMP	Construction Noise and Vibration Management Plan
CoA	Conditions of Approval
CSSI	Critical State Significant Infrastructure
DNVIS	Detailed Noise and Vibration Impact Statement
DPE	Department of Planning and Environment
EPA	NSW Environment Protection Authority
EPL	Environmental Protection Licence
OOH	Out-of-hours
OOHW	Out-of-hours work
OSOM	Over-size over-mass
SBT	Station boxes and tunnelling works
SCAW	Surface and civil alignment works
SM-WSA	Sydney Metro – Western Sydney Airport
SSTOM	Stations, Systems, Trains, Operations and Maintenance

1 Overview

This E57 Community Consultation Report provides a summary of consultation undertaken by Parklife Metro in accordance with Condition of Approval E57, with respect to out-of-hours work (OOHW), which includes deliveries of plant and equipment, extended work hours for concrete works, and waterproofing within the station box and dive areas, at the Orchard Hills Metro Station site.

1.1 Project background

The Sydney Metro – Western Sydney Airport (SM-WSA) will become the transport spine for Greater Western Sydney, connecting communities and travellers with the new Western Sydney International (Nancy-Bird Walton) Airport and the growing region.

The city-shaping project, from St Marys through to the new airport and the Western Sydney Aerotropolis (the new suburb of Bradfield), will provide a major economic stimulus for western Sydney, supporting more than 14,000 jobs during construction for the NSW and national economies.

Jointly funded by the Australian and NSW Governments, the 23-kilometre new railway will link residential areas with job hubs including the new Aerotropolis and connect travellers from the new airport to the rest of Sydney's public transport system.

The Australian and NSW governments have awarded all three major contracts for the Sydney Metro – Western Sydney Airport project:

- Station boxes and tunnelling (SBT) – currently in delivery
- Surface and civil alignment works (SCAW) – currently in delivery
- Stations, Systems, Trains, Operations and Maintenance (SSTOM) – works commencing mid-late 2023.

1.2 SSTOM scope of works

In December 2022, the largest ever Public Private Partnership (PPP) contract in New South Wales, was awarded to Parklife Metro for the Stations, Systems, Trains, Operations and Maintenance (SSTOM) works for the Sydney Metro - Western Sydney Airport Project.

Parklife Metro will deliver:

- Around 4.3km of twin rail tunnels (generally located side by side) between St Marys (the Northern extent of the project) and Orchard Hills
- A cut-and-cover tunnel around 350 metres long (including tunnel portal), transitioning to an in-cutting rail alignment south of the M4 Western Motorway at Orchard Hills
- Around 10km of rail alignment between Orchard Hills and Western Sydney International, consisting of a combination of viaduct and surface rail alignment
- Around two kilometres of surface rail alignment within Western Sydney International Airport
- Around 3.3km of twin rail tunnels (including tunnel portal) within Western Sydney International Airport
- Around 3km of twin rail tunnels between Western Sydney International Airport and Bradfield
- Six new Metro Stations:
 - St Marys (providing an interchange with the existing Sydney Trains suburban rail network)
 - Orchard Hills
 - Luddenham
 - Airport Business Park
 - Airport Terminal

- Bradfield (the new Western Parkland City)
- Grade separation of the track alignment at key locations including:
 - Where the alignment interfaces with existing infrastructure such as the Great Western Highway, M4 Western Motorway, Lansdowne Road, Patons Lane, the Warragamba to Prospect Water Supply Pipelines, Luddenham Road, the future M12 Motorway, Elizabeth Drive, Derwent Road and Badgerys Creek Road
 - Crossings of Blaxland Creek, Cosgroves Creek, Badgerys Creek and other small waterways to provide flood immunity for the Project
- Modifications to the existing Sydney Trains station and rail infrastructure at St Marys (where required) to support interchange and customer transfer between the new metro station and the existing Sydney Trains suburban rail network
- A stabling and maintenance facility and operational control centre located to the south of Blaxland Creek and east of the proposed metro track
- New pedestrian, cycle, park-and-ride and kiss-and-ride facilities, public transport interchange infrastructure, road infrastructure and landscaping as part of the station precincts.

Parklife Metro will also operate and maintain the Sydney Metro – Western Sydney Airport (SM-WSA) line, and its assets for 15 years after it becomes operational in 2026.

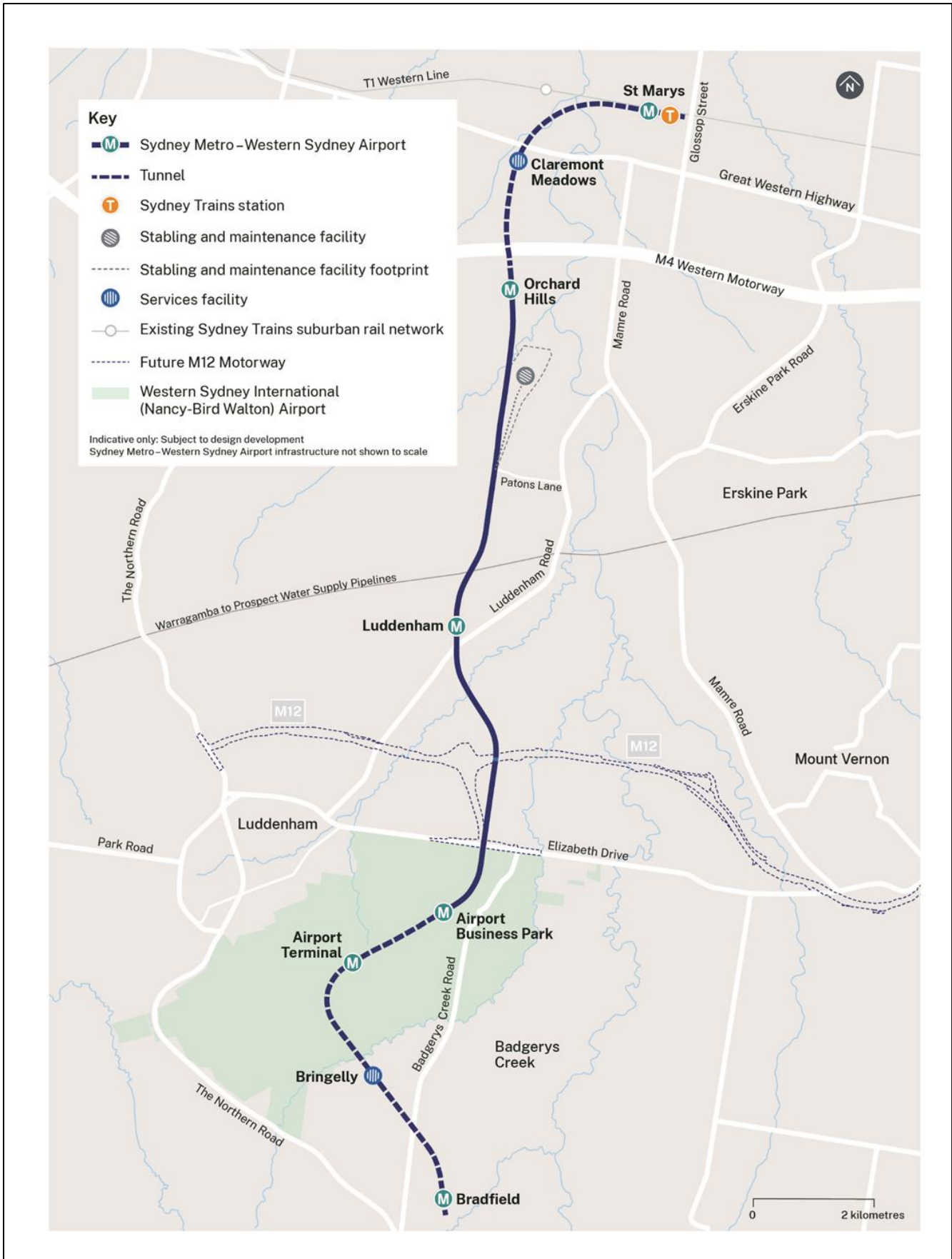


FIGURE 1. MAP OF THE SM-WSA PROJECT ALIGNMENT, AND STATION LOCATIONS

1.2.1 Orchard Hills Metro Station

The Orchard Hills Metro Station will be an open cut station, located on the eastern side of Kent Road, at the intersection of Lansdowne Road. The station will have one entrance on Kent Road, with provision for a second entrance to be built east of the station in the future.

Key features and benefits of the Orchard Hills Metro Station will include:

- Secure bicycle parking
- Park-and-ride facilities, with a capacity of up to 500 spaces
- Transport interchange facilities, including bus bays and shelters, kiss-and-ride bays, and point-to-point vehicle facilities
- Upgrades to Kent Road and Lansdowne Road, which will involve the construction of new precinct roads, installation of new pedestrian crossings, and the creation of a new public plaza adjacent to the proposed station entrance
- Potential for future station retail amenities

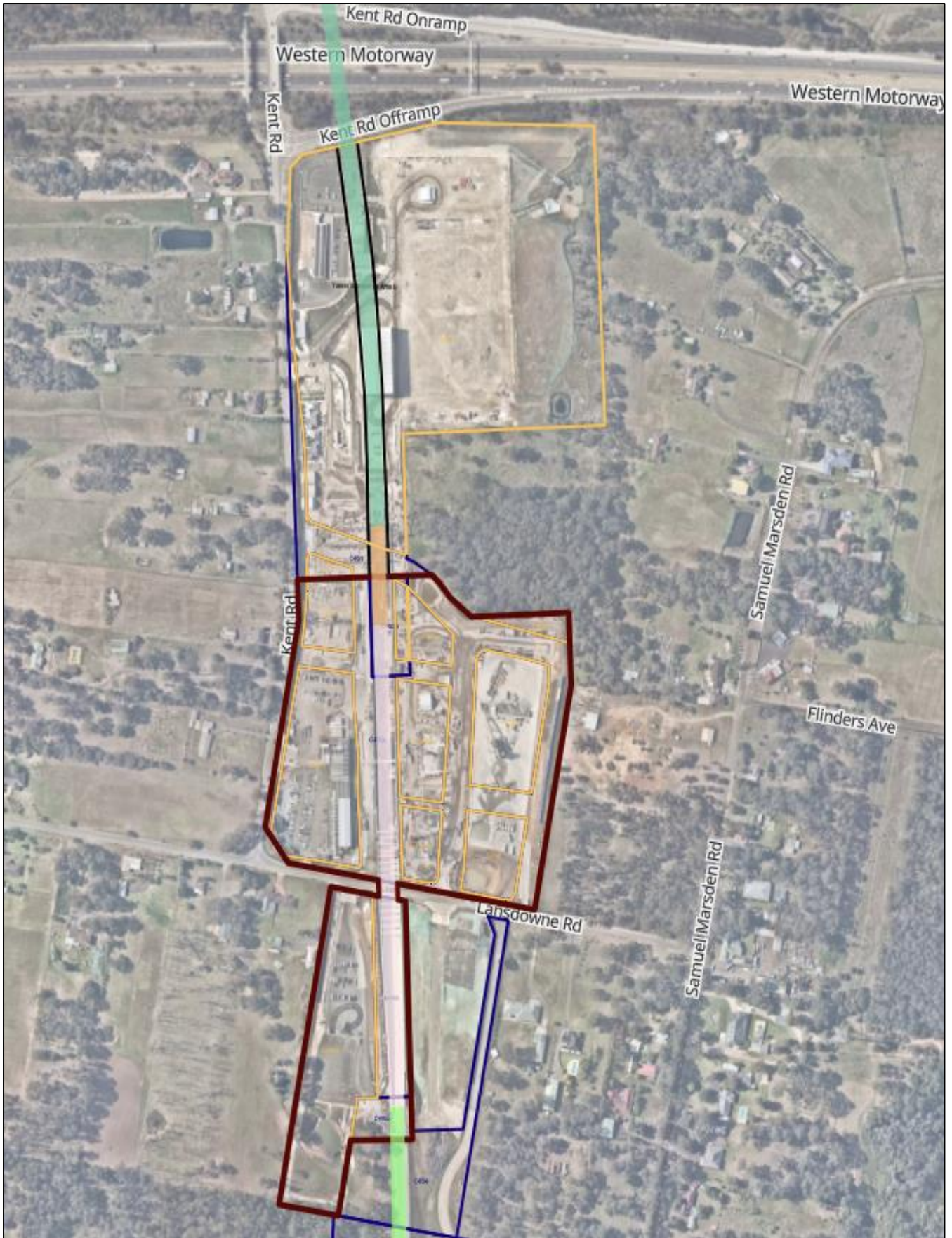


FIGURE 2. MAP OF THE ORCHARD HILLS METRO STATION

1.3 Out-of-hours scope of works

1.3.1 Ongoing oversized plant and equipment deliveries

Oversized plant, structures and materials deliveries are required at the Orchard Hills worksite to facilitate ongoing construction of the metro station. These oversized and/or overmass (OSOM) deliveries have been determined by the police or other authorised authorities to require special arrangements to transport along public roads (EPL L4.5 Exceptional circumstances) and the relevant road network operator has confirmed that carrying out the works and activities during standard construction hours would result in a high risk to road network performance. In this regard, to access the road network, operating conditions including route and travel time restrictions have been applied to OSOM deliveries. Time restrictions require these OSOM vehicle movements to be carried out at night, and outside peak travel times when the road authority has granted approval to occupy the roadway. Access to the road network for OSOM deliveries is generally permitted between 9pm and 5am. This is to minimise impacts to traffic and reduce the risk to worker and road user safety.

Deliveries requiring out-of-hours work (OOHW) may include, but is not limited to:

- Mobile cranes
- Excavators
- Precast beams
- Other oversized materials and equipment.

1.3.2 Extended work hours for concreting and supporting formwork

Due to the size of the concrete pours for the station box base slabs and walls, we will require to work extended construction hours to complete the formworks, concrete pours and finishing works to mitigate any safety and quality risks.

Concrete activities extended hours will continue from November 2024 until approximately June 2025, as per EPL 21807 condition L5.10. Extended construction hours to complete the formworks, concrete pours and finishing works are permitted between the below timeframes:

- Monday to Friday: 5am to 7am and 6pm to midnight
- Saturday: 6am to 8am and 1pm to 6pm
- A total of twelve times per month
- Concrete and supporting formwork will continue from 5am to midnight Monday to Friday; and 6am to 6pm on Saturdays. The concrete and supporting formwork are permitted to occur outside of standard construction hours, a total of twelve times per month.

1.3.3 Concrete batching plant operations

The Orchard Hills concrete batch plant will operate outside of standard construction hours to meet the required concrete supply demands for the SSTOM project. The construction of St Marys Station, Orchard Hills Station, Bradfield Station and the Stabling and Maintenance Facility will require a substantial volume of concrete as they all attract the same technical concrete requirements and are subject to the same concrete supply deficiencies. The concrete batch plant will operate outside of standard construction hours from November 2024 until approximately June 2025 as per condition L5.13 of EPL 21807. The concrete batch plant is permitted to operate between the below timeframes:

- Monday to Friday: 5 am to 7 am and 6 pm to 10 pm
- Saturday: 6 am to 8 am and 1 pm to 6 pm

1.3.4 Utility investigation works – Caddens and Kent Road

Out-of-hours work will be required to locate a water main point along Kent Road, both to the north and south of the M4 Motorway. These investigations are critical to informing the design and construction processes for the future Orchard Hills Station water main.

The work will require one night shift to locate the utility services, scheduled between December 2024 and March 2025 pending road traffic approvals.

Note: The need for utility works has been captured generally as part of the consultation activities undertaken to date. Consultation will be carried out with identified sensitive receivers as required once details of the works are confirmed (details including dates, times, duration etc)

2 Conditions of Approval requirements

This E57 Community Consultation Report provides a summary of consultation undertaken in accordance with Condition of Approval E57 with respect to out of hours work activities proposed at the Orchard Hills Metro Station site.

2.1 Out-of-hours Works – Community Consultation on Respite

Condition of Approval E57 states:

In order to undertake out-of-hours work outside the work hours specified under Condition E38, appropriate respite periods for the out-of-hours work must be identified in consultation with the community at each affected location on a regular basis. This consultation must include (but not be limited to) providing the community with:

- (a) a progressive schedule for periods no less than three (3) months, of likely out-of-hours work;
- (b) a description of the potential work, location and duration of the out-of-hours work;
- (c) the noise characteristics and likely noise levels of the work; and
- (d) likely mitigation and management measures which aim to achieve the relevant noise management levels (NMLs) under Condition E43 (including the circumstances of when respite or relocation offers will be available and details about how the affected community can access these offers).

The outcomes of the community consultation, the identified respite periods and the scheduling of the likely out-of-hour work must be provided to the ER, EPA and the Planning Secretary prior to the out-of-hours work commencing.

Note: Respite periods can be any combination of days or hours where out-of-hours work would not be more than 5 dB(A) above the RBL at any residence.

2.2 Respite eligibility

In accordance with the Sydney Metro Construction Noise and Vibration Standard (CNVS), the Construction Noise and Vibration Management Plan (CNVMP), and the Detailed Noise and Vibration Impact Statements (DNVIS); all noise affected receivers are eligible for respite periods, applicable during out-of-hours activities when works are predicted to exceed the NML's.

Additional mitigation measures as per the CNVS, CNVMP and DNVIS are included in Table 1 below.

TABLE 1. OUT-OF-HOURS MITIGATION MEASURES AS PER THE PROJECTS ENVIRONMENTAL PLANNING DOCUMENTS

Time period		Mitigation measures for predicted LAeq (15 minute) airborne noise level above NML			
		0-10dB	10-20dB	20-30dB	>30dB
Approved construction hours	Mon-Fri (7:00am - 6:00pm)				
	Sat (8:00am – 1:00pm)	-	LB	LB, M, SN	LB, M, SN
	Sun/Pub Hol (Nil)				
OOHW (Evening)	Mon-Fri (6:00pm – 10:00pm)				
	Sat (1:00pm – 10:00pm)	LB	LB, M	LB, M, SN, RO	LB, M, SN, IB, PC, RO
	Sun/Pub Hol (8:00am – 6:00pm)				
OOHW (Night)	Mon-Fri (10:00pm – 7:00am)				
	Sat (10:00pm – 8:00am)	LB	LB, M, SN, RO	LB, M, SN, IB, PC, RO, AA	LB, M, SN, IB, PC, RO, AA
	Sun/Pub Hol (6:00pm – 7:00am)				

NOTE: Phone calls (PC), Monitoring (M), Individual briefings (IB), Alternative Accommodation (AA), Specific Notification (SN), letterbox drop (LB), Duration Reduction (DR), Project Specific Respite Offer (RO).

2.3 Mitigation measures and planned respite

This work is expected to generate intermittent periods of noise, when the delivery trucks have reached site, and unloading the equipment. For the proposed out-of-hours work, the following mitigation measures and respite will be implemented:

- Noise barriers in the form of a spoil mound and shipping containers installed between the concrete batch plant and the closest receivers
- Works will be undertaken no more than three nights in a week, no more than two consecutive nights, and no more than 10 nights in a month, unless subject to an EPL condition. If additional nights are required, further mitigation measures will apply and alternative respite offers will be considered on a case by case basis
- Concrete activities (as per EPL L5.10 – formworks, pouring and finishing) that occur outside of standard construction hours are permitted on 12 occasions per month
- Noise monitoring will be undertaken to confirm our noise modelling, and inform additional mitigation measures, as required
- All vehicles will be turned off when not in use, non-tonal reversing alarms will be fitted to plant and machinery, and trucks will avoid reversing, where feasible
- Temporary lighting will be directed away from properties, to avoid light spill
- Communication will be limited to radios only when moving and unloading equipment, with no shouting, use of horns or loud radios, unless there is an emergency
- Use of rubber faced mallets instead of hammers to reduce metal to metal contact
- Ongoing doorknocks and consultation, to seek further feedback, and to be able to address any reasonable concerns

- Co-ordination of out-of-hours works with the Surface and Civil Alignment contractors to minimise cumulative noise impact to sensitive receivers and ensure that respite periods are met.
- No High Noise Impact Works will be undertaken out of hours.

3 Consultation tools and channels

Community consultation has been undertaken prior to commencement of the out-of-hours work in accordance with the PLM Community Communications Strategy (CCS) and the Project’s Environmental Protection Licence (EPL) 21807.

3.1 Communications tools

Consultation includes a range of tools including:

Type	Purpose and use
Monthly construction updates	<p>A monthly construction update distributed at the start of each month, providing details on:</p> <ul style="list-style-type: none"> • Upcoming construction activities for the month, including any OOHW • Hours of work, and durations • Equipment used on site • Traffic, pedestrian and cyclist routes on any changes, closures, and/detours • Likely impacts of construction activities, including noise, vibration, traffic, access, and dust • Mitigation measures to reduce the impacts of activities • Work location maps • Contact details, including how feedback can be provided
Out-of-hours notifications	<p>An out-of-hours notification distributed to a 200m radius of site, or further as required to notify all noise affected receivers, no less than seven calendar days and no more than 14 calendar days, prior to OOHW commencing, providing details on:</p> <ul style="list-style-type: none"> • Upcoming OOH construction activities, including hours of work and durations • Equipment used on site • Traffic, pedestrian and cyclist routes on any changes, closures, and/detours • Likely impacts of construction activities, including noise, vibration, traffic, access, and dust during the OOHW • Mitigation measures to reduce the impacts of activities during the OOHW • OOHW location maps • Contact details, including how feedback can be provided

<p>Specific notifications</p>	<p>Specific notification distributed to those identified as impacted receivers during the OOHW.</p> <p>Specific notification is used to support the monthly construction updates and OOHW notifications, to provide additional details on the impacts, and any changes that may occur.</p>
<p>Doorknocks</p>	<p>Doorknocks to impacted properties to consult on the proposed OOHW, and any feedback.</p>
<p>Community Information Line: 1800 717 703</p>	<p>Provides community access to the project communications team during construction hours. OOH complaints will be referred to the on-call Place Manager.</p>
<p>Sydney Metro email: sydneymetrowsa@transport.nsw.gov.au</p>	<p>Provides access during business hours to the Sydney Metro project communications team. Website enquiries are directed through this email address.</p>
<p>Postal address for written feedback: Sydney Metro, PO BOX K659 Haymarket, NSW 1240</p>	<p>Provides access to the broader Sydney Metro project. Address is included in all notifications and newsletters.</p>
<p>Consultation Manager</p>	<p>All interactions with stakeholders will be recorded in this database which is established by Sydney Metro.</p>

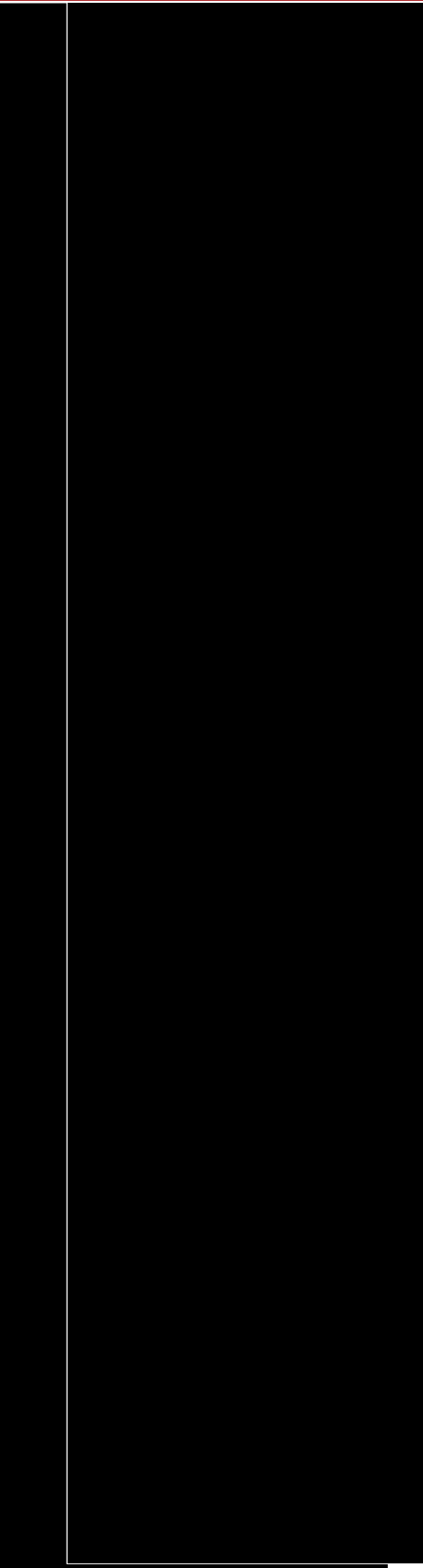
3.2 Communication activities timeline

TABLE 3. COMMUNICATION ACTIVITIES TIMELINE

Date	Activity	
28 May 2024	Monthly construction update distributed to 200m of site.	Distribution to properties in Figure 2. Also includes: Campaign email Notification uploaded to SM website
17 June 2024	Specific notification distributed for extended work hours for concreting works.	Properties listed in Appendix C
18 June 2024	Doorknock properties as a courtesy directly adjacent to the worksite with specific notification for extended work hours for concreting works.	Targeted doorknock to properties in Section 3.3, Table 4 - Extended hours – concrete pours and concrete finishing works SWMY slips left if no contact was made.
23 June 2024	Monthly construction update distributed to all noise affected receivers nearby site, which included proposed out-of-hours activities.	Distribution to properties shown in Figure 3 and listed in Appendix C. Also includes: Campaign email Notification uploaded to SM website
Ongoing	Re-engagement with the community on any proposed OOHW. All feedback received will be considered and implemented, where feasible.	
Ongoing	Re-engagement with the community prior to the operations of the concrete batching plant commencing, to advise and receive any feedback that may be considered and implemented	
Ongoing	Re-engagement with the community on any proposed OOHW. All feedback received will be considered and implemented, where feasible.	
Ongoing	Re-engagement with the community on any proposed OOHW. All feedback received will be considered and implemented, where feasible.	
25 November 2024	Doorknock properties as a courtesy directly adjacent to the worksite with specific notification for extended work hours for concreting works and concrete batching plant.	Targeted doorknock to properties in Section 3.3, Table 4 - Extended hours – batching plant and concrete pours.

3.3 Stakeholder list

TABLE 4.

Stakeholder	Location	Communication activities
Broader distribution area (Properties listed in Appendix C)		Monthly notifications OOHW notifications Campaign emails
Oversized deliveries - impacted properties and nearby residents		Monthly notifications Campaign emails
Extended hours – concrete pours and concrete finishing works		Targeted doorknocks and phone calls to directly adjacent properties Monthly notifications OOHW notifications Campaign emails

**Concrete batching plant
operations**



Doorknocks and phone calls
Monthly notifications
OOHW notifications
Campaign emails

3.4 Distribution maps

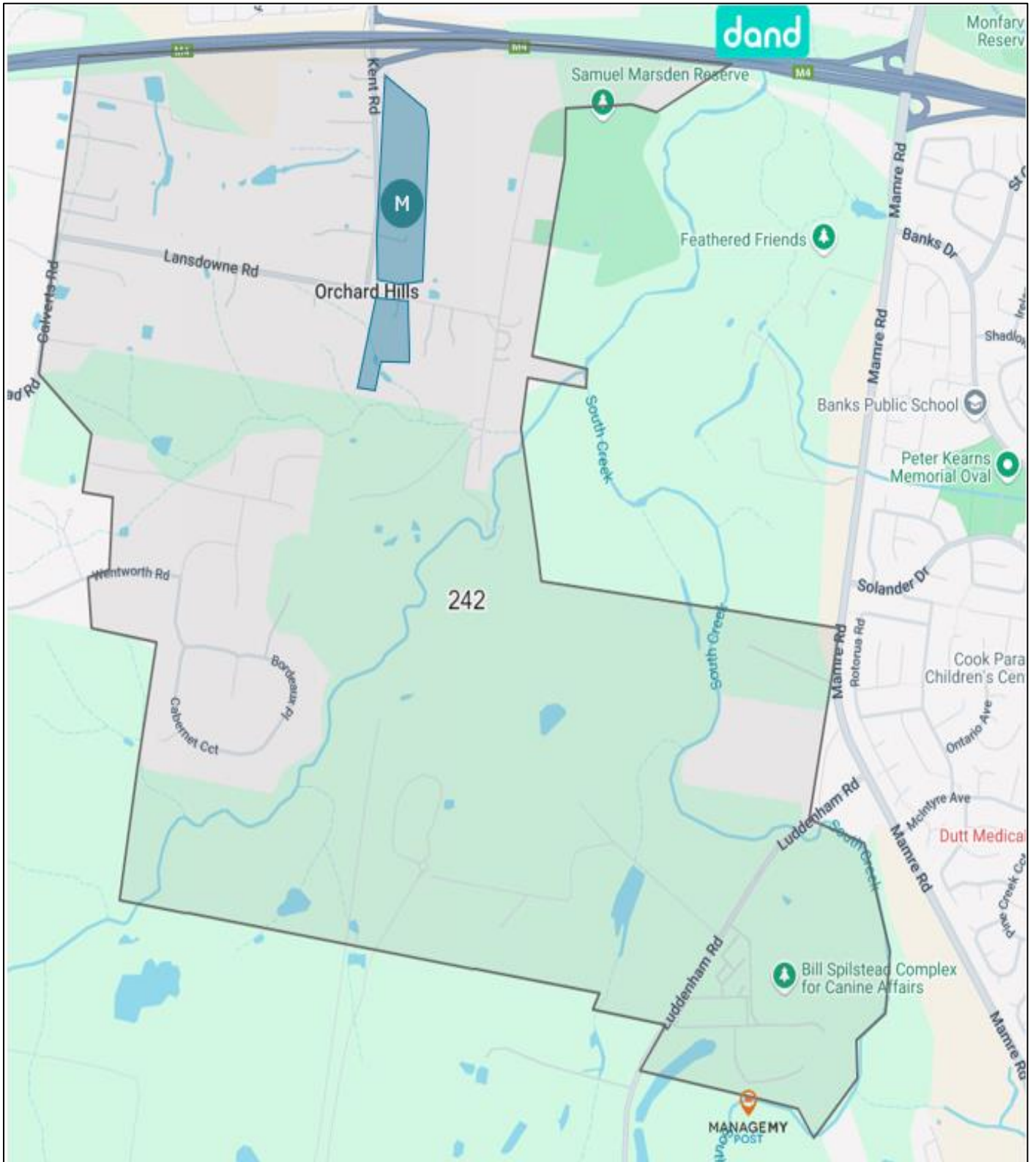


FIGURE 3. DISTRIBUTION MAP - 200M RADIUS OF SITE

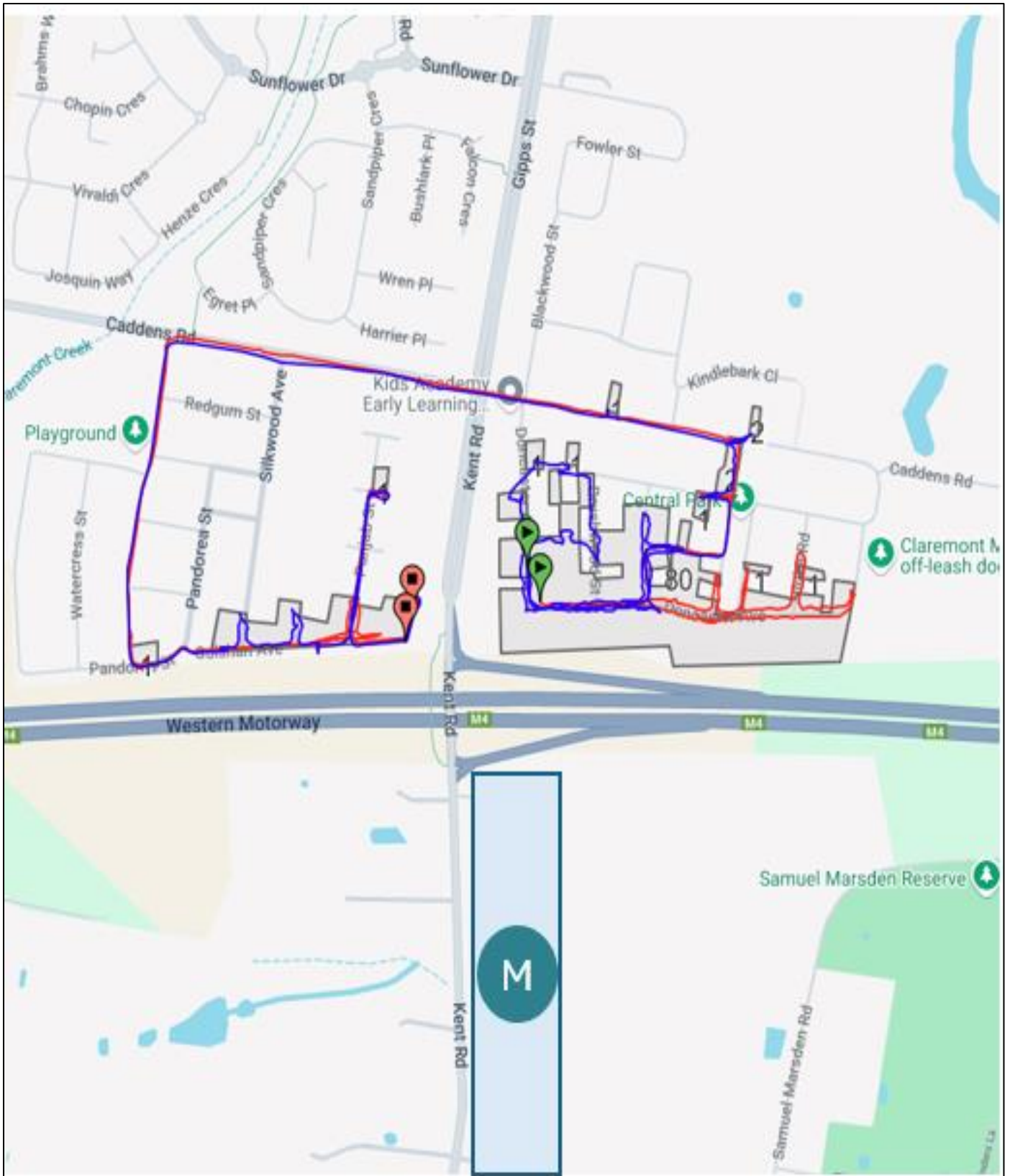


FIGURE 4. DISTRIBUTION MAP TO ALL AFFECTED NOISE RECEIVERS

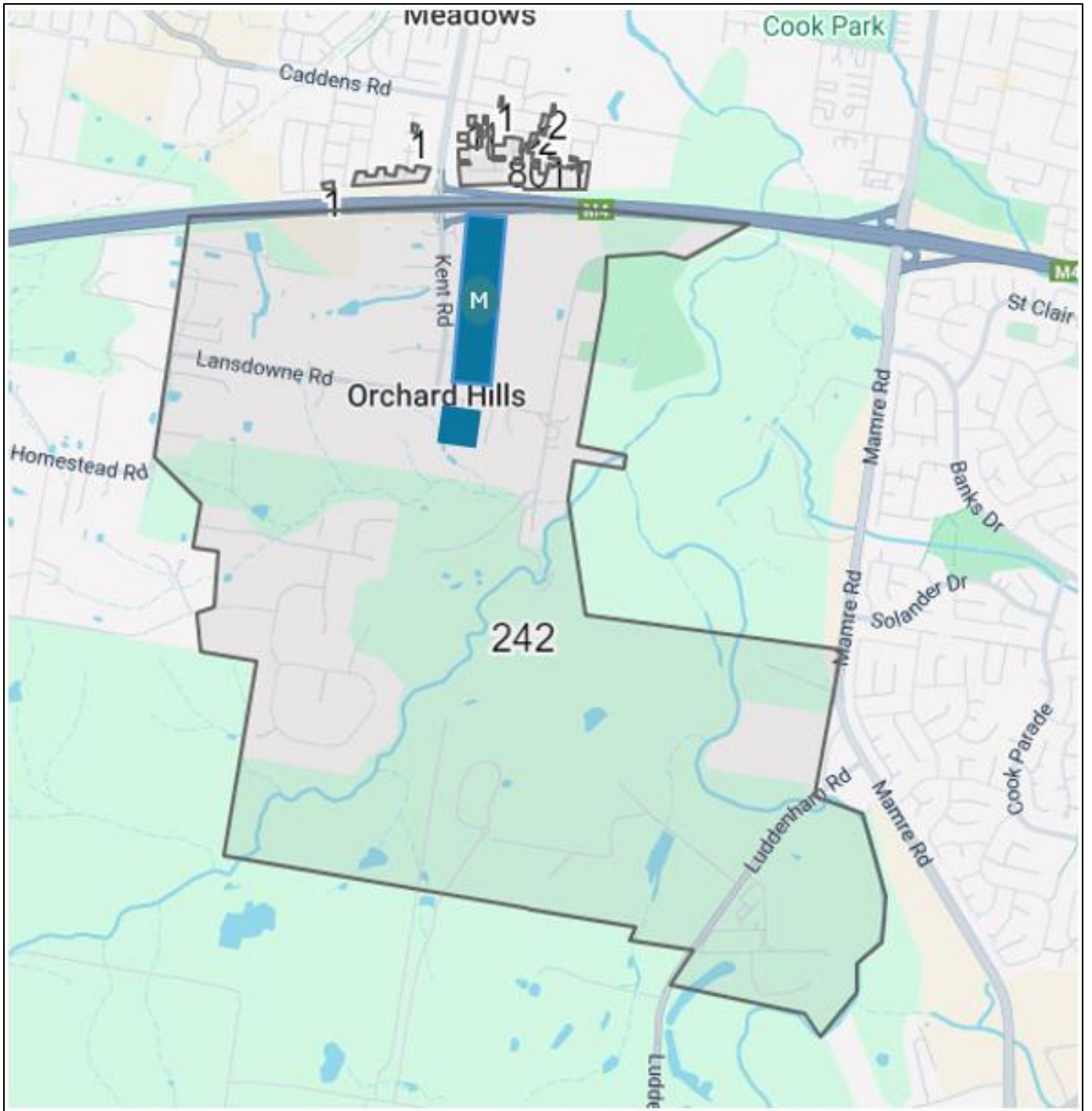


FIGURE 5. DISTRIBUTION MAP TO ALL AFFECTED NOISE RECEIVERS

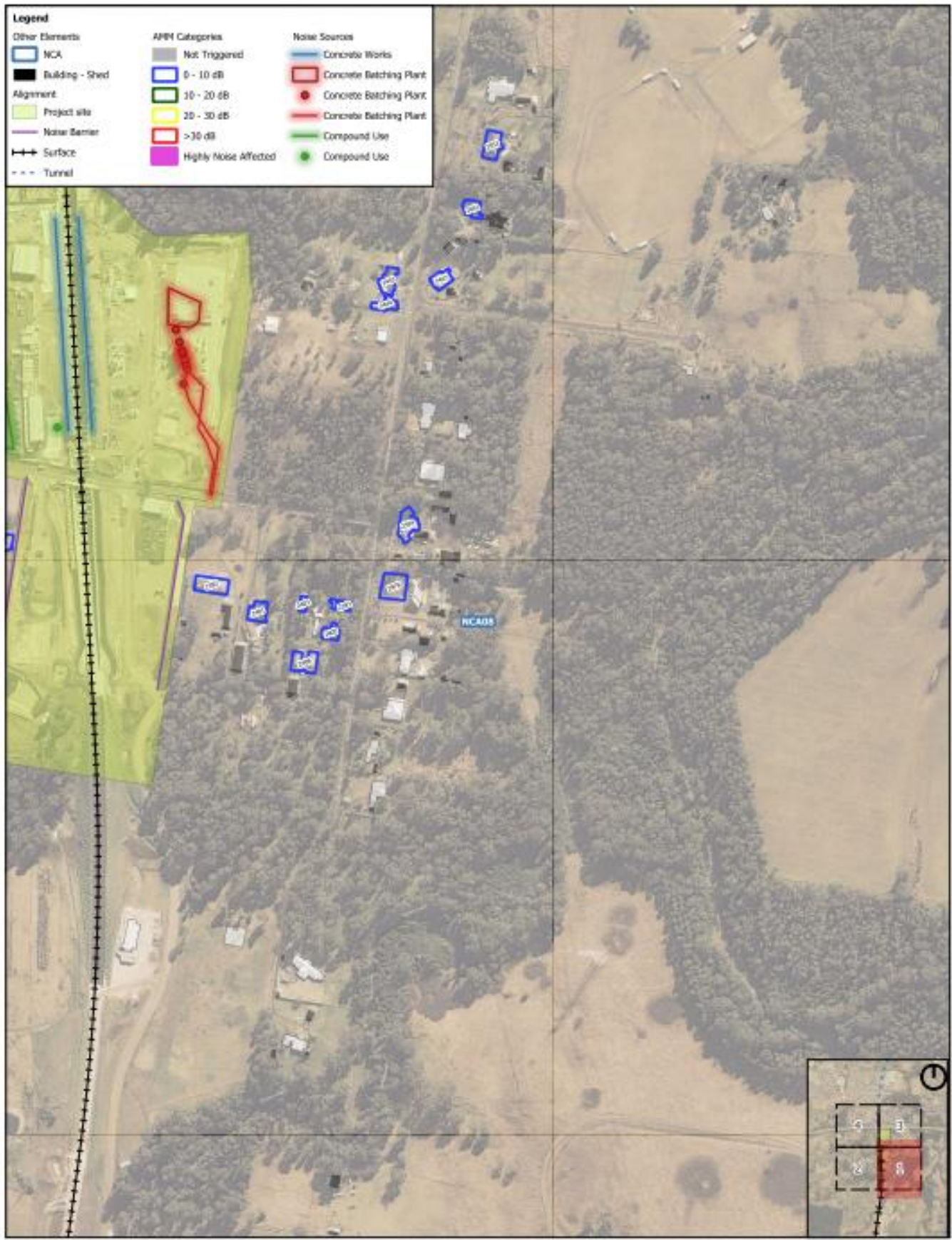
4 Conclusion

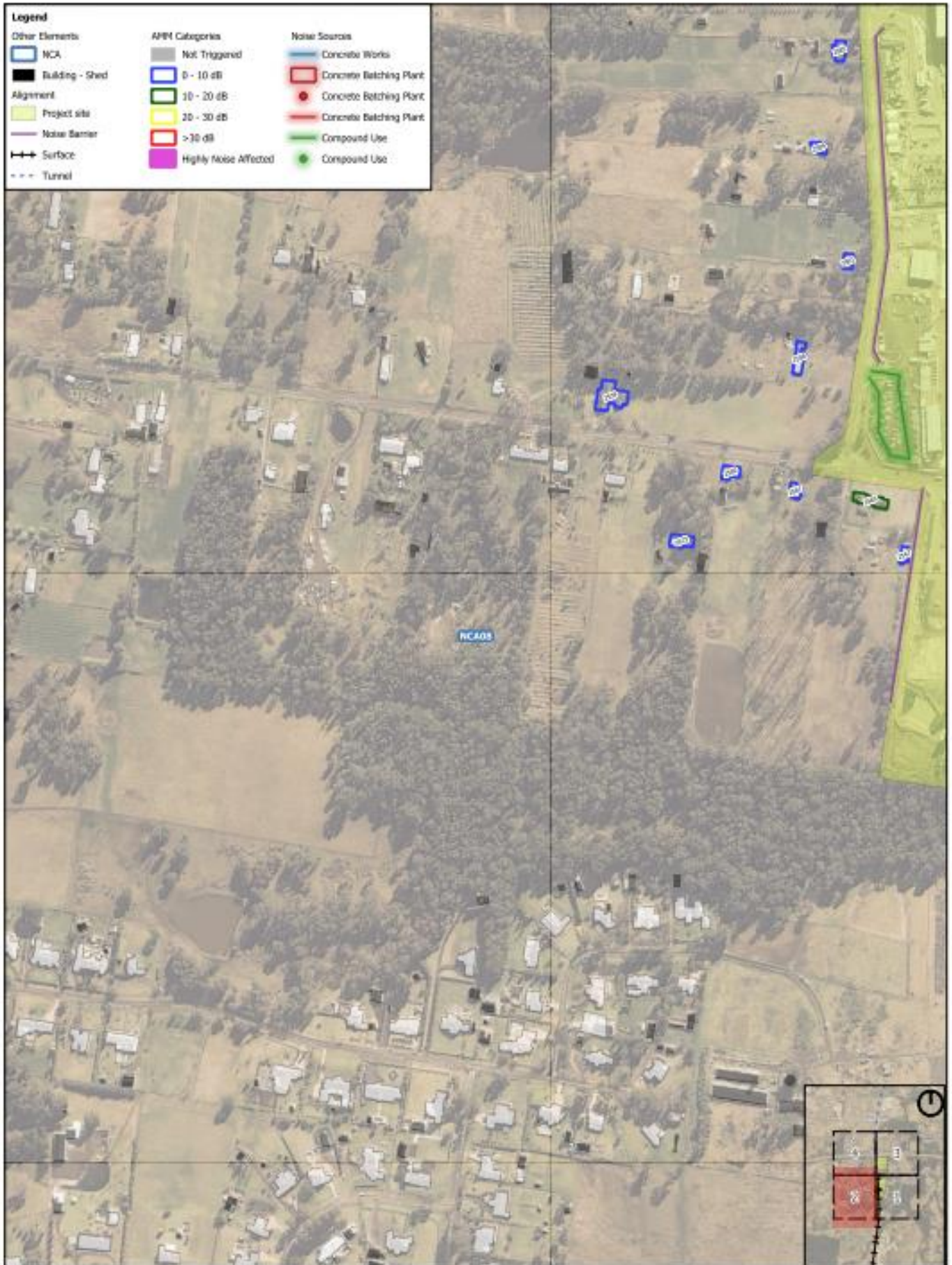
All consultation undertaken to date, including monthly construction updates; OOHW notifications, specific notifications and door knocks to all noise affected receivers identified in our noise modelling has resulted in no feedback or preferences on specific mitigation measures or respite periods. Receivers have agreed to the respite periods proposed for all upcoming OOHW.

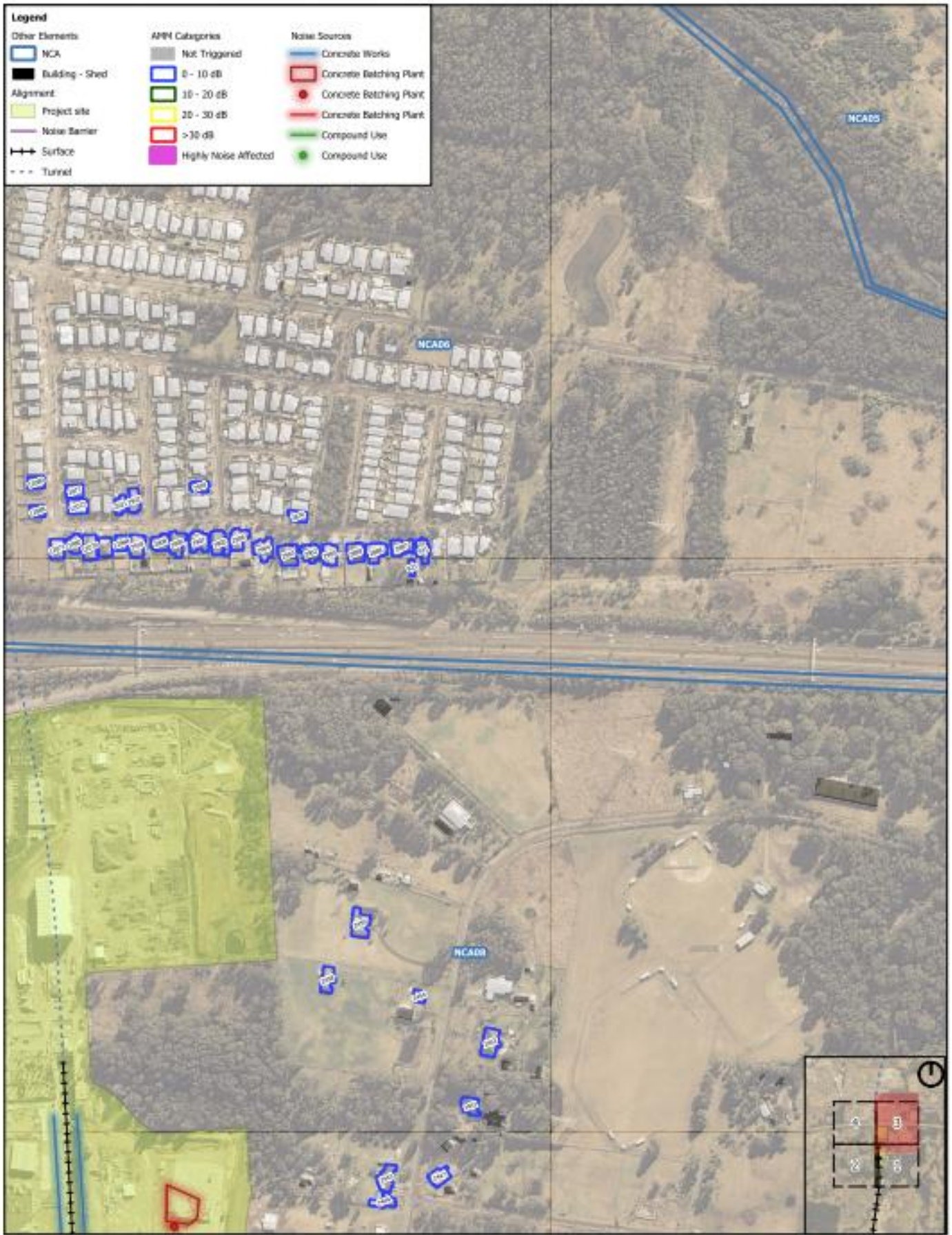
The standard mitigation measures and respite requirements established in the Sydney Metro Construction Noise and Vibration Standard and Project EPL 21807, will be implemented during the works and follow-up consultation will be undertaken by the Parklife Metro Community Place Manager to ascertain the effectiveness of the implemented controls and seek additional feedback.

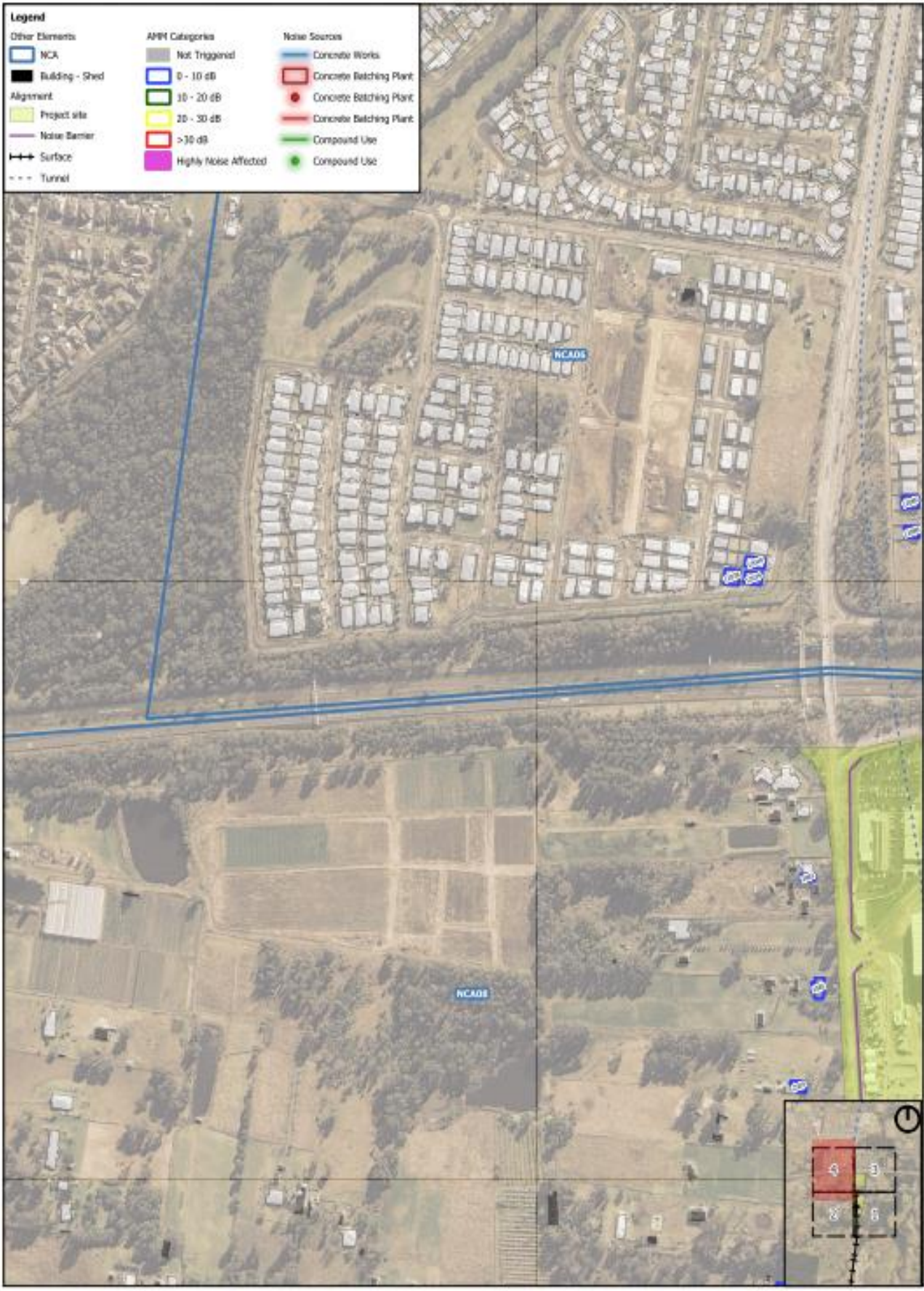
As per E57, if any feedback is received it will be considered and implemented where feasible, and any specific feedback or preferences on mitigation measures will require a revision of the DNVIS.

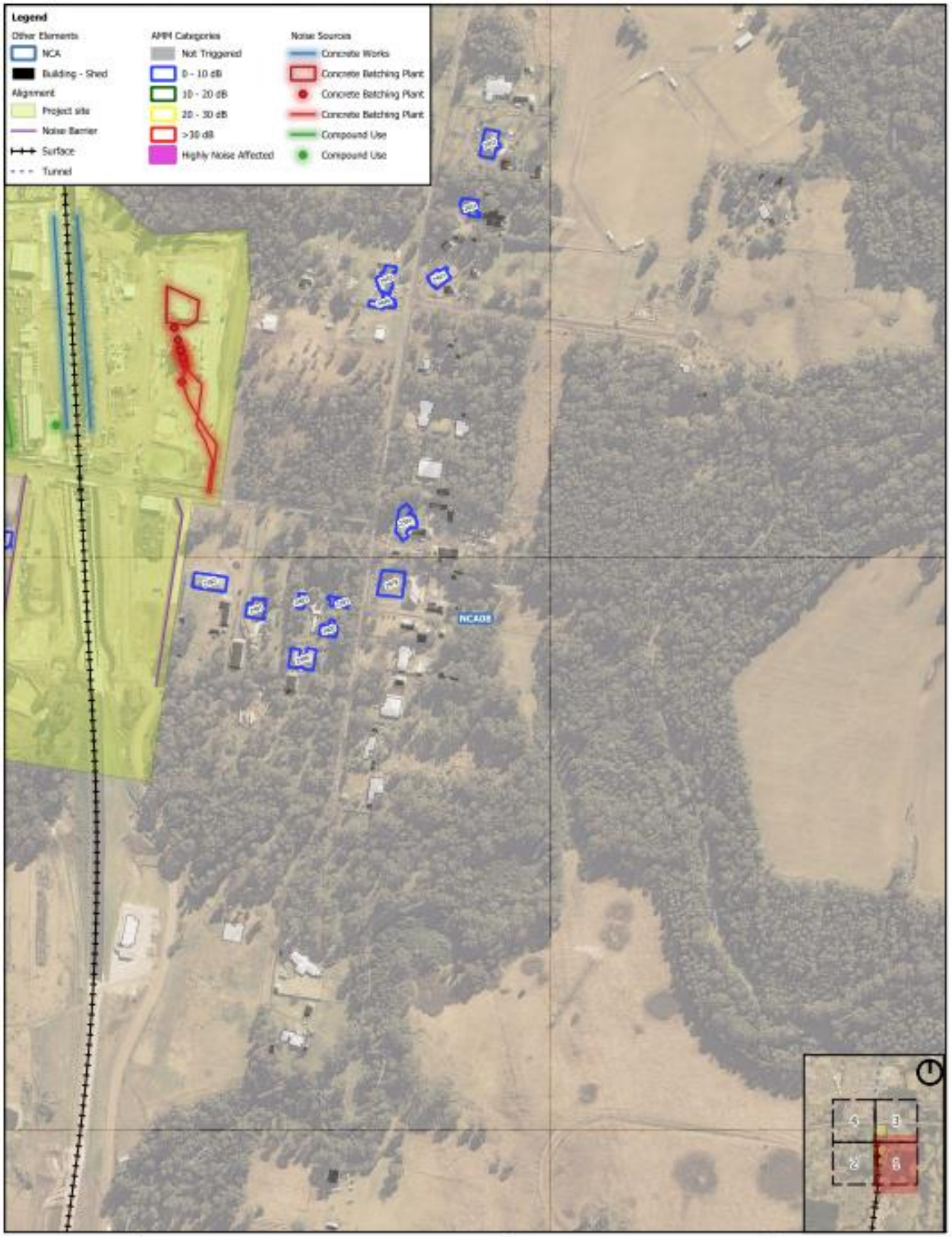
Appendix A Noise modelling maps

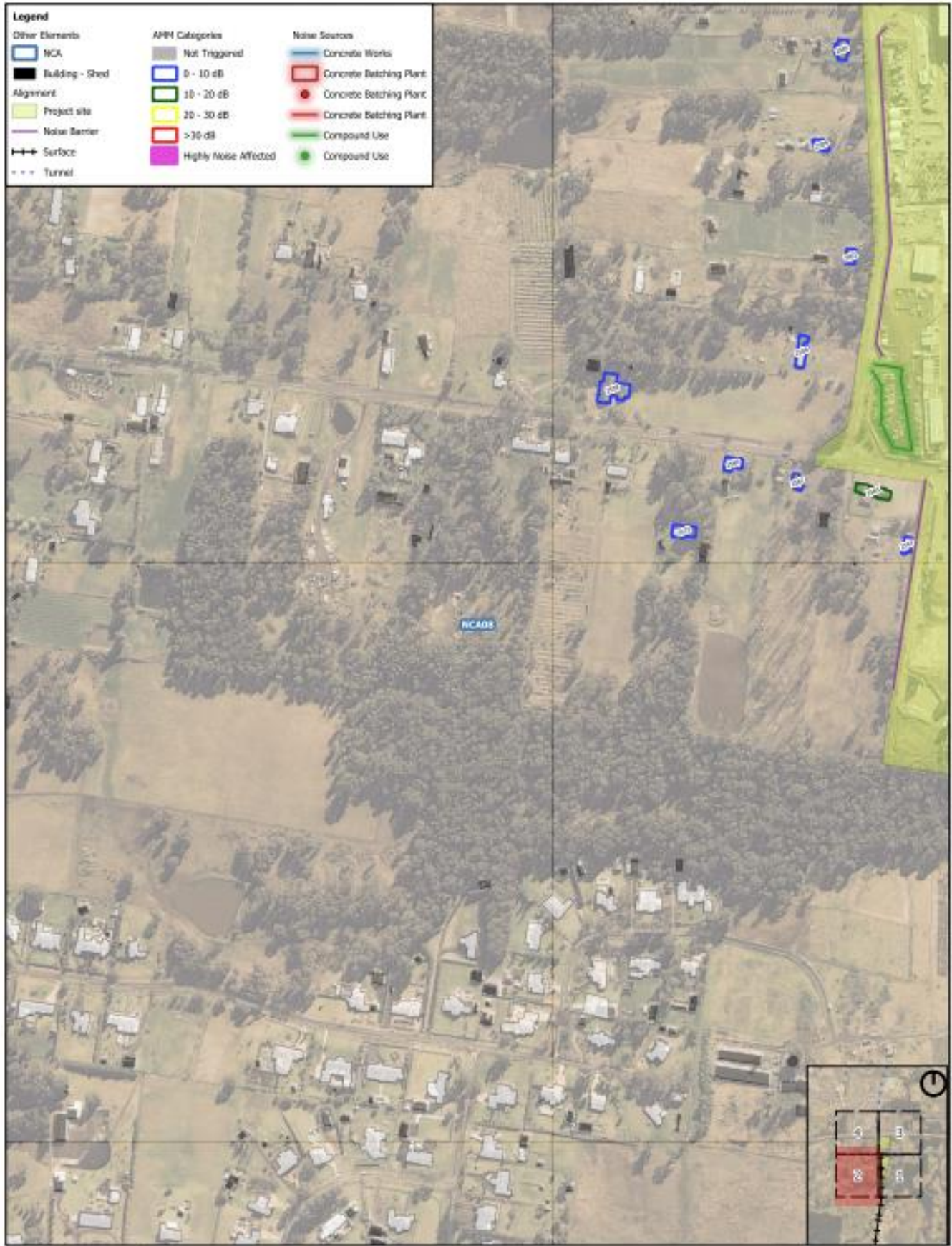


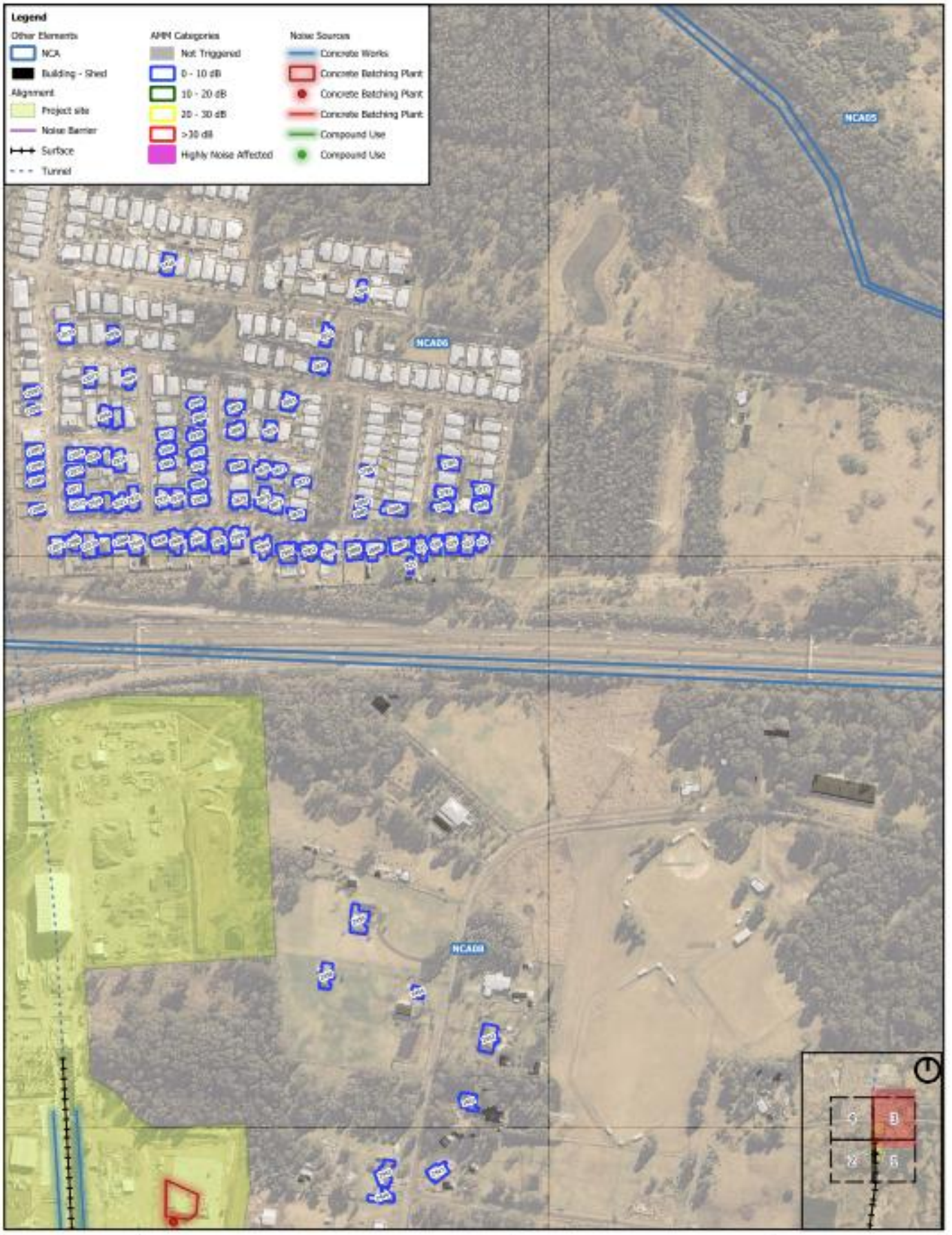


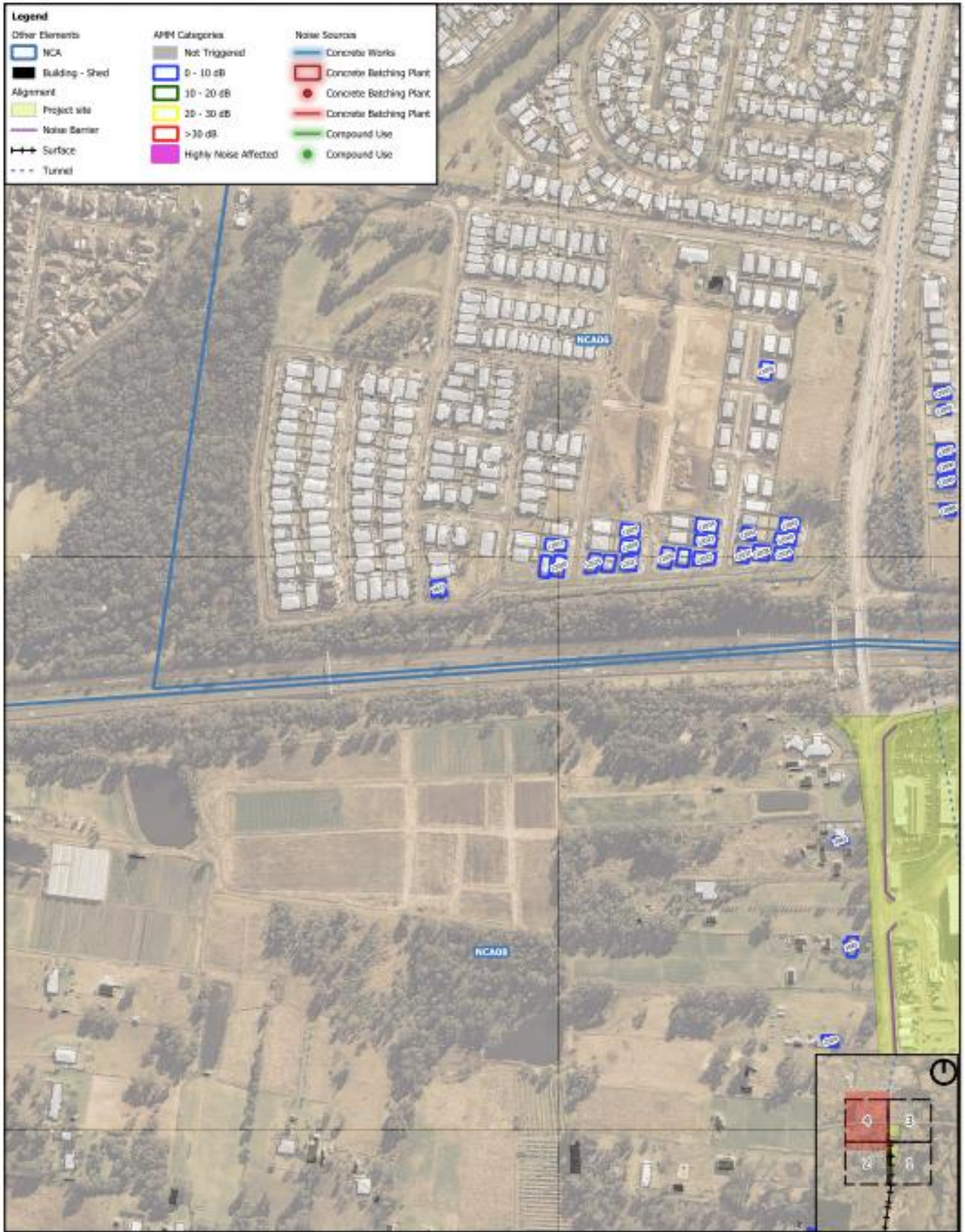


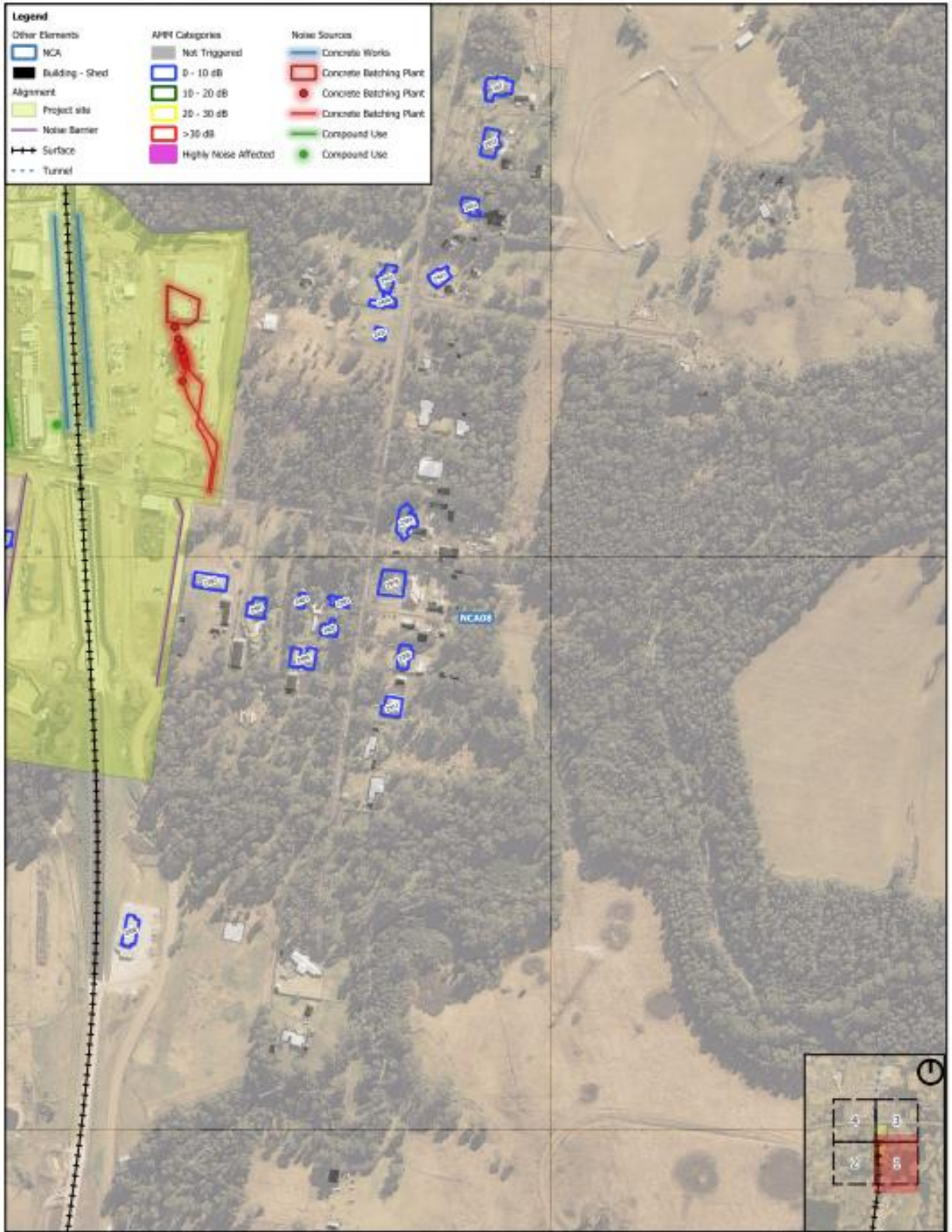


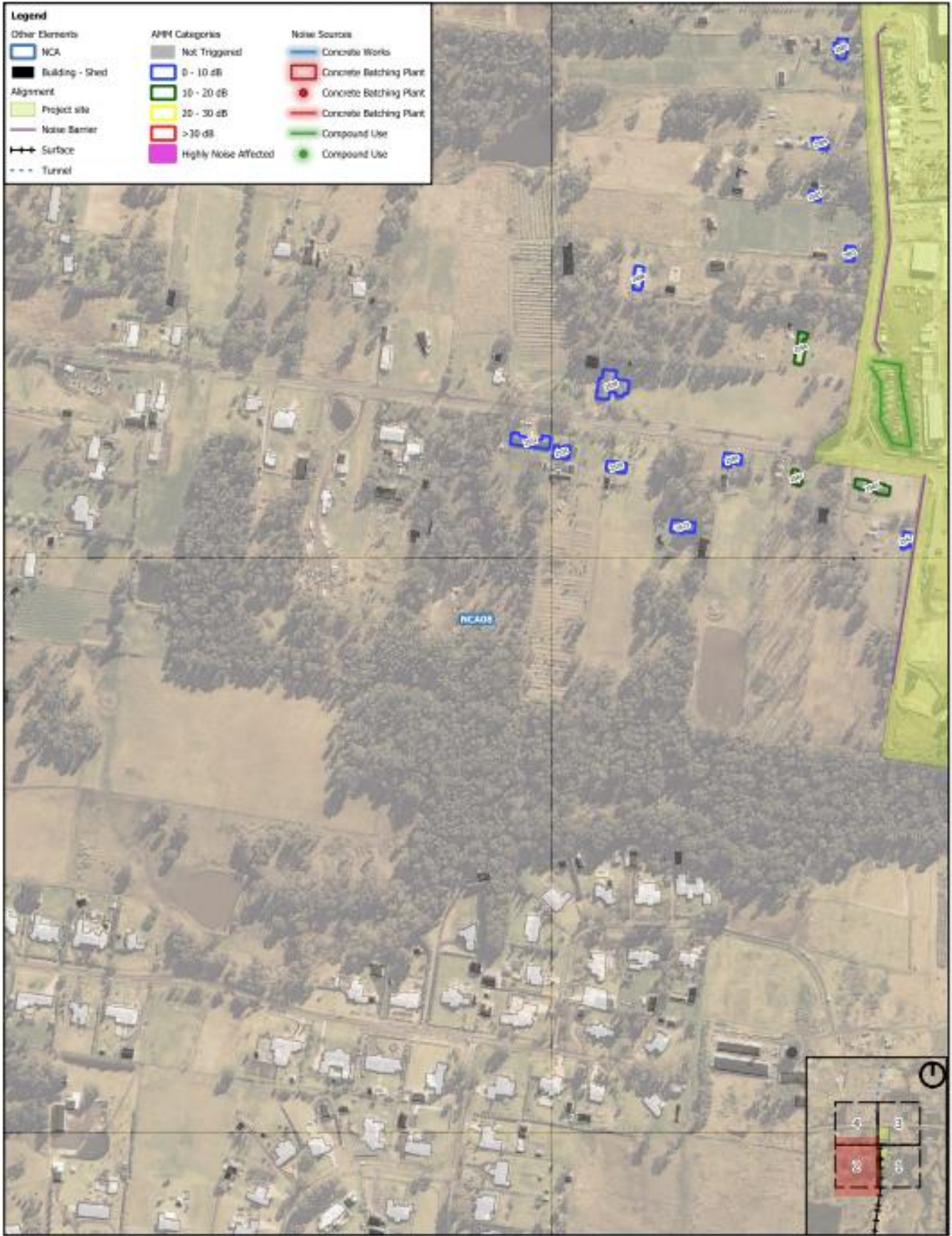


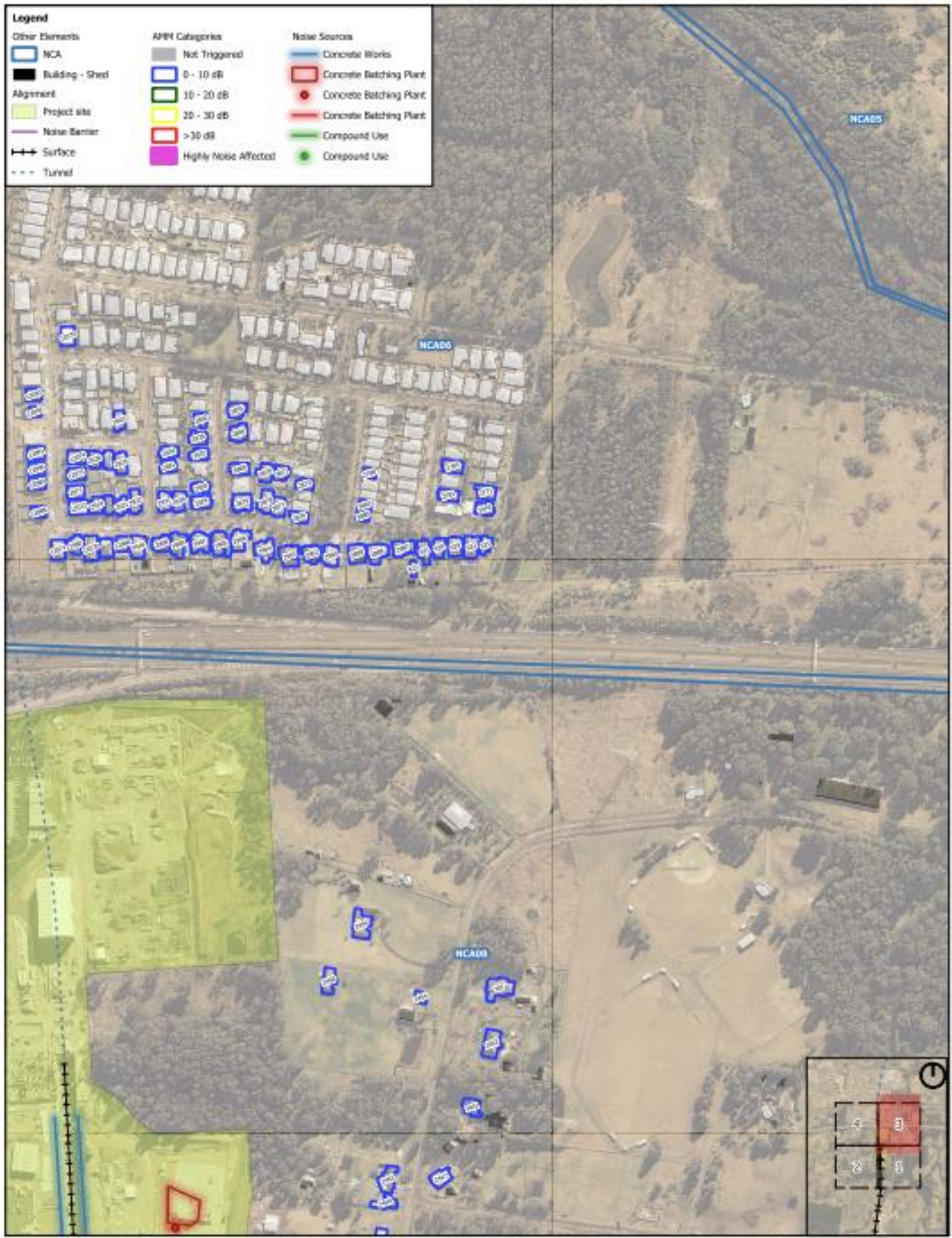


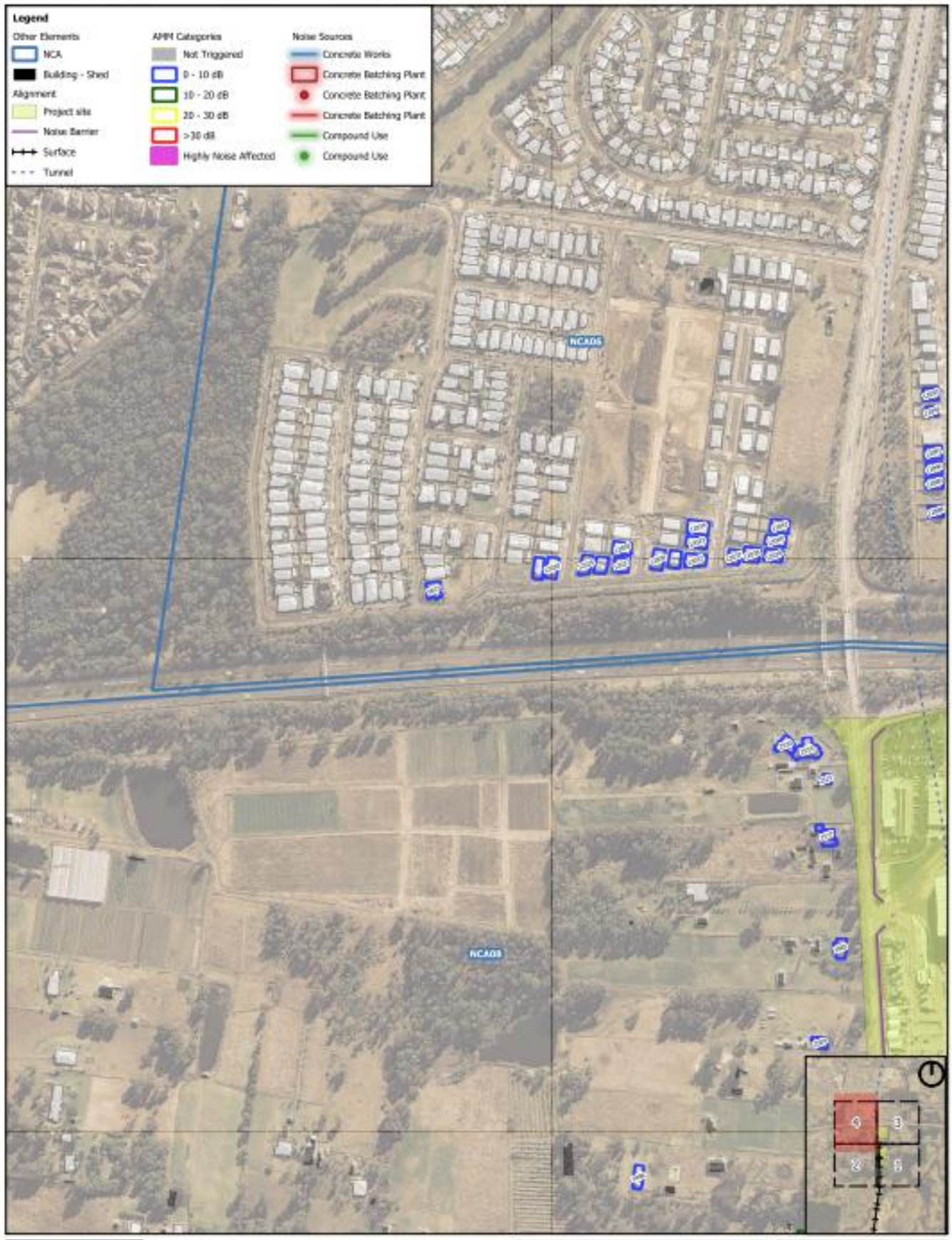












Appendix B Communication materials

MONTHLY CONSTRUCTION UPDATE

Sydney Metro – Western Sydney Airport

Notification – Orchard Hills Metro Station and the Stabling and Maintenance Facility

Sydney Metro is Australia’s biggest transport project.

December 2024 and January 2025

Sydney Metro – Western Sydney Airport is the new metro railway line which will service Greater Western Sydney and the new Western Sydney International (Nancy-Bird Walton) Airport. A city-shaping project, the new 23-kilometre metro railway will connect Bradfield city centre with St Marys in the north – where customers can connect to the existing Sydney Trains suburban T1 Western Line. The NSW and Australian governments have a shared objective of having Sydney Metro – Western Sydney Airport operational when the airport opens for passenger services.

CPB Contractors and United Infrastructure are delivering the Surface and Civil Alignment (SCAW) works. CPB Contractors Ghella are delivering Station Boxes and Tunnelling (SBT) and Parklife Metro consortium are delivering the Stations, Systems, Trains, Operations and Maintenance (SSTOM) works. See the list below for the work activities at Orchard Hills during December and January. See maps for the work locations.

Stations, Systems, Trains, Operations and Maintenance works include:

Orchard Hills Metro Station:

- waterproofing, formwork, steel fixing and concrete pours inside the station box and drainage system
- completion of the concrete batching plant on the eastern end of the site, which will provide concrete services to multiple SSTOM sites and locations
- surveying and geotechnical investigations, including potholing, non-destructive digging and testing along local surrounding roads to inform utility designs.
- road surface and restoration works, including filling in potholes on Kent and Lansdowne Road.

Stabling and Maintenance Facility:

- major earthworks including importing materials, excavations and compacting for the rail areas, and substation, operations control centre buildings and the maintenance and administration building
- construction of a new 132kV powerline, commencing from the future substation area, working towards and on Patons Lane
- major drainage works including excavations, installing pits and pipes, and backfilling
- site-wide concrete works, including formwork, steel fixing for various structures such as the substation, Maintenance Administration Building, Operations Control Centre, and across the site
- expansion of office facilities
- commencement of Combined Services Route (CSR) and trunk service installation.

Surface and Civil Alignment works include:

- finishing works including maintenance and landscaping
- fortnightly aerial land surveys and site photography of the surface alignment.

Station Boxes and Tunnelling works include:

- CPBG handed over the final portion of the Orchard Hills site to the SSTOM contractor in November 2024
- construction work is continuing within the tunnels between Orchard Hills Metro Station and St Marys Station, with access from the Claremont Meadows Services Facility site.

Out-of-hours work activity includes:

- delivery of over-sized equipment and machinery and materials to the Orchard Hills Metro Station and the Stabling Maintenance Facility sites
- extended work hours for excavation, steel fixing, concrete pours and concrete finishing works inside the station box at the Orchard Hills site and across various structures including the substation area at the Stabling Maintenance Facility
- dewatering activities at the Orchard Hills and Stabling Maintenance Facility sites
- concrete batching plant operations at the Orchard Hills Metro Station site
- construction of a new 132kV powerline on Patons Lane including excavations, trenching and backfilling, cable laying, and installation of utility services
- Road surface and restoration works, including filling in potholes on Kent and Lansdowne Road

Work hours:

Standard construction hours are **Monday to Friday** from **7am to 6pm** and **Saturdays** from **8am to 1pm**.

Some work will also be required to take place outside our standard construction hours to minimise traffic impacts or to ensure the safety of pedestrians, motorists and our workers. Out-of-hours work activities will be carried out in line with the project Environmental Protection Licence, Road Occupancy Licences, and Transport for NSW requirements.

Impacted surrounding residents and businesses will be notified in advance of any out-of-hours work.

What to expect:

- mitigation measures will be in place to minimise impacts including installing noise blankets, where feasible, respite periods during high noise activities, noise and vibration monitoring, and water carts for dust suppression
- increased light and heavy vehicle movements on surrounding roads, and local road closures. All vehicles will be turned off when not in use, non-tonal reversing alarms will be fitted to plant and machinery and trucks will avoid reversing into and on site, where feasible
- temporary lighting to ensure a safe worksite will be directed away from properties
- communication will be limited to radios only when moving and unloading equipment, with no use of horns or loud radios
- traffic control and signage to safely assist motorists, pedestrians, and cyclists.

Equipment used:

Equipment used will include, but is not limited to, excavators, cranes, dozers, graders, rollers, vacuum truck, water carts, heavy and light site vehicles, generators, survey equipment, traffic management devices, concrete agitators, pneumatic drills, concrete saws, bobcats, chainsaws, telehandler and powered hand tools.

Changes to traffic, pedestrian, and cyclist routes:

During these works, traffic control will be in place to assist motorists, pedestrians, and cyclists with any changes to traffic conditions. This may include contraflow and stop-slow traffic controls. The time of these changes will vary and are dependent on road authority approvals.

Access to driveways and buildings will be maintained at all times. Residents will be separately notified if access to driveways will be affected, or access to private property is required.

Three monthly out-of-hours lookahead activities:

Activity	Equipment	Work hours	Timing
SSTOM works – Orchard Hills Metro Station site			
Concrete pours and finishing works station box base slab and walls	Concrete pump, vibrators, concrete trucks, generators, and lighting towers.	6pm to 12am, 5am – 7am- Monday to Friday 6am to 6pm, Saturdays	Ongoing - 2024
Concrete batching plant operations	Concrete trucks, generators, mixers, compressors and lighting towers.	5am to 10pm, Monday - Friday. 6am to 6pm Saturday	Ongoing
Oversized plant and equipment activities	Traffic management, light and heavy vehicles, generators, lighting towers and mobile cranes.	10pm to 7am	Ongoing
Dewatering activities	Water treatment plant, water pumps, light vehicles, generators and lighting towers.	As required	Ongoing
SSTOM works – Stabling Maintenance Facility site			
Extended work hours for major earthworks	Excavators, dump trucks, graders, compactors, drum rollers, dozers, trucks, generators and lighting towers.	6am to 7am, Monday to Friday 1pm to 6pm, Saturdays	On-going
Concrete pours and finishing works, steel fixing	Concrete pump, vibrators, concrete trucks, generators, and lighting towers.	6pm to 12am, 4am to 7am Monday to Friday 6am to 6pm, Saturday	Ongoing - 2024
Dewatering activities	Water treatment plant, water pumps, light vehicles, generators and lighting towers.	As required	Ongoing
Long weekend possession - 132kv power supply installation on Patons Lane	Excavators, trucks, mobile cranes, compactors, vibrators, generators, and lighting towers.	6pm, Friday 29 November to 6pm, Tuesday 3 December 2024	November – December 2024
SCAW works – Orchard Hills			
Earthworks at Unnamed Creek	Light and heavy vehicles, heavy machinery, generators and lighting towers	6pm to 7am Monday to Friday	December 2024

Feedback:

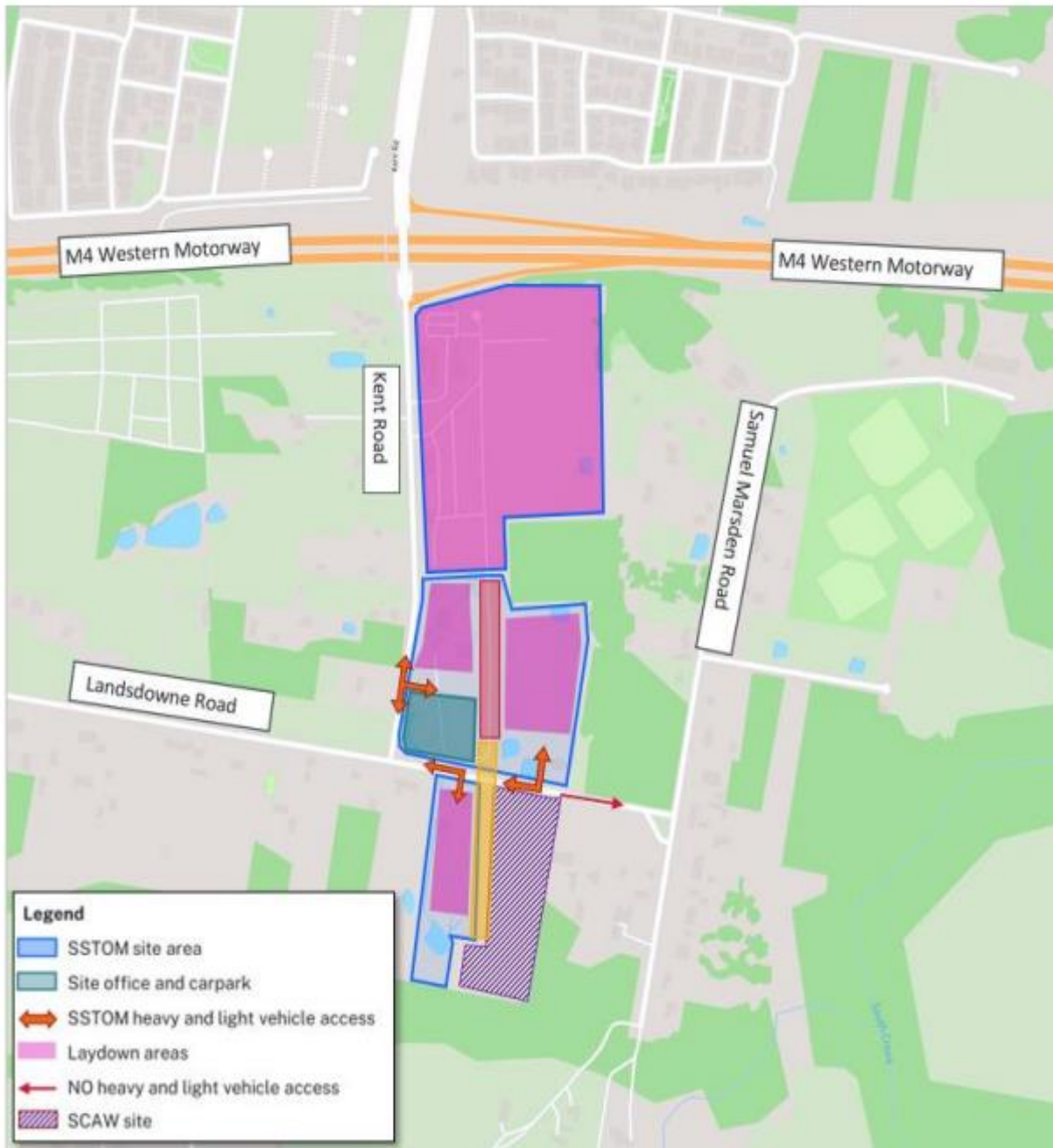
Detailed Noise and Vibration Impact Statements (DNVIS) have been prepared, including proposed mitigation measures based on noise modelling. Your feedback on appropriate respite periods or mitigation measures is encouraged. The SBT, SCAW and SSTOM Community Engagement strategies are now online.

Please visit www.cpbcontractors.cc/SBTstrategy, www.cpbcontractors.cc/SCAWstrategy or www.parklifemetro.com.au/SSTOMCCS to view the respective strategy and contact us to provide feedback.

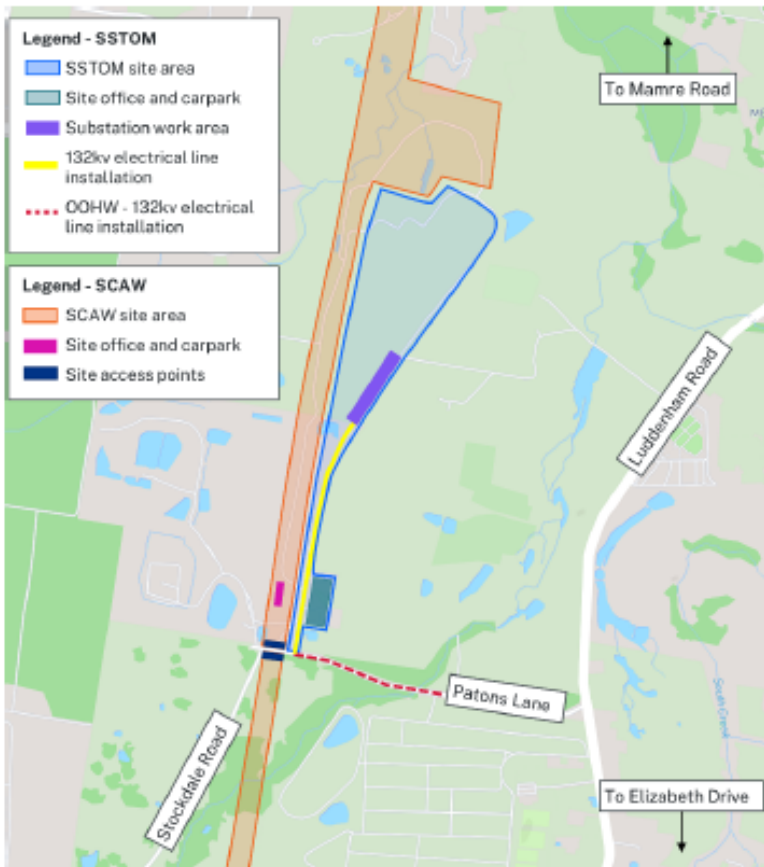
If you would prefer to receive updates by email, please let us know via sydneymetrowsa@transport.nsw.gov.au and we will add you to the distribution list.

Thank you for your cooperation while we complete this essential work.

Orchard Hills Metro Station work location:



Stabling Maintenance Facility work location:



Contact us:

Please contact the community team on 1800 717 703 or sydneymetrowsa@transport.nsw.gov.au if you have any questions, complaints or would like to provide feedback about the work. We will continue to keep you updated on the progress of work in your area.

If you would prefer to receive updates by email, please contact us and we will add you to the distribution list.

Thank you for your cooperation while we complete this essential work.



Sydney Metro has launched Sydney Metro Connect – a new way to stay informed.

Access information in over 100 languages Download Sydney Metro Connect from the App store or get it on Google Play.

For more information contact



24-hour Community Information Line 1800 717 703



sydneymetrowsa@transport.nsw.gov.au



Sydney Metro – Western Sydney Airport
PO Box K659, Haymarket NSW 1240



If you need help understanding this information, please contact the Translating and Interpreting Service on 131 450 and ask them to call us on 1800 717 703.

SPECIFIC NOTIFICATION

Extended work hours for concrete pours and batching plant – Orchard Hills Metro Station

25 November 2024

Extended work hours will continue to be in place to enable us to complete large concrete pours and finishing works within the station box for the new Orchard Hills Metro Station. Extended work hours will be **5am to 12am, Monday to Friday, and 6am to 6pm Saturdays**. Where possible, we will continue carrying out concreting activities during standard construction hours - **Monday to Friday from 7am to 6pm, and Saturdays from 8am to 1pm**. Intermittent extended work hours will be needed to complete larger concrete pours.

The concrete batching plant at SSTOM will support operations across multiple project sites along the alignment. The extended hours for the batching plant will be **Monday to Friday 5am to 10pm and Saturdays 6am to 6pm, from December 2024 to April 2025**.

We will make every effort to minimise the impacts of this work however there may be times when the work will be noisy. Mitigation measures will be in place to minimise the impacts, including noise blankets around our work area and noise monitoring during extended work hours.

Please contact Bella from the Parklife Metro community team on **1800 717 703** or email sydneymetrowsa@transport.nsw.gov.au if you have any questions or would like to provide feedback about this work.

Thank you for your patience during this essential work.



Work location:



Access information in over 100 languages

Download Sydney Metro Connect from the App store or get it on Google Play.

Sydney Metro – Western Sydney Airport – PLM00036

Appendix C Impacted properties and consultation records

Noise Catchment Area	Residential address	Building ID	Consultation Method (x = undertaken)		Consultation Summary
			Specific notification	Monthly construction update Doorknock	
06	[REDACTED]	[REDACTED]	X	X	[REDACTED]
06	[REDACTED]	[REDACTED]	X	X	[REDACTED]
06	[REDACTED]	[REDACTED]	X	X	[REDACTED]
08	[REDACTED]	[REDACTED]	X	X	[REDACTED]
08	[REDACTED]	[REDACTED]	X	X	[REDACTED]
08	[REDACTED]	[REDACTED]	X	X	[REDACTED]
08	[REDACTED]	[REDACTED]	X	X	[REDACTED]
08	[REDACTED]	[REDACTED]	X	X	[REDACTED]
08	[REDACTED]	[REDACTED]	X	X	[REDACTED]
08	[REDACTED]	[REDACTED]	X	X	[REDACTED]
08	[REDACTED]	[REDACTED]	X	X	[REDACTED]
08	[REDACTED]	[REDACTED]	X	X	[REDACTED]
08	[REDACTED]	[REDACTED]	X	X	[REDACTED]
08	[REDACTED]	[REDACTED]	X	X	[REDACTED]
08	[REDACTED]	[REDACTED]	X	X	[REDACTED]
08	[REDACTED]	[REDACTED]	X	X	[REDACTED]
08	[REDACTED]	[REDACTED]	X	X	[REDACTED]
08	[REDACTED]	[REDACTED]	X	X	[REDACTED]
08	[REDACTED]	[REDACTED]	X	X	[REDACTED]
08	[REDACTED]	[REDACTED]	X	X	[REDACTED]
08	[REDACTED]	[REDACTED]	X	X	[REDACTED]
08	[REDACTED]	[REDACTED]	X	X	[REDACTED]
06	[REDACTED]	[REDACTED]	X	X	[REDACTED]
06	[REDACTED]	[REDACTED]	X	X	[REDACTED]
06	[REDACTED]	[REDACTED]	X	X	[REDACTED]
06	[REDACTED]	[REDACTED]	X	X	[REDACTED]
06	[REDACTED]	[REDACTED]	X	X	[REDACTED]
06	[REDACTED]	[REDACTED]	X	X	[REDACTED]
06	[REDACTED]	[REDACTED]	X	X	[REDACTED]
06	[REDACTED]	[REDACTED]	X	X	[REDACTED]
06	[REDACTED]	[REDACTED]	X	X	[REDACTED]
06	[REDACTED]	[REDACTED]	X	X	[REDACTED]
06	[REDACTED]	[REDACTED]	X	X	[REDACTED]
06	[REDACTED]	[REDACTED]	X	X	[REDACTED]
06	[REDACTED]	[REDACTED]	X	X	[REDACTED]
06	[REDACTED]	[REDACTED]	X	X	[REDACTED]
06	[REDACTED]	[REDACTED]	X	X	[REDACTED]
06	[REDACTED]	[REDACTED]	X	X	[REDACTED]
06	[REDACTED]	[REDACTED]	X	X	[REDACTED]
06	[REDACTED]	[REDACTED]	X	X	[REDACTED]
06	[REDACTED]	[REDACTED]	X	X	[REDACTED]
06	[REDACTED]	[REDACTED]	X	X	[REDACTED]
06	[REDACTED]	[REDACTED]	X	X	[REDACTED]
08	[REDACTED]	[REDACTED]	X	X	[REDACTED]

06					X	X	
06					X	X	
06					X	X	
06					X	X	
06					X	X	
06					X	X	
06					X	X	
06					X	X	
06					X	X	
06					X	X	
06					X	X	
06					X	X	
06					X	X	
06					X	X	
06					X	X	

Appendix D Conditions of Approval (SSI 10051)

Conditions of Approval relevant to this Consultation Report.

Reference	Description	How is this addressed
E57	<p>Out-of-hours work – Community consultation on respite</p> <p>In order to undertake out-of-hours work outside the work hours specified under Condition E38, appropriate respite periods for the out-of-hours work must be identified in consultation with the community at each affected location on a regular basis. This consultation must include (but not be limited to) providing the community with:</p>	This document.
	(a) a progressive schedule for periods no less than three (3) months, of likely out-of-hours work;	Section 3. Appendix B
	(b) a description of the potential work, location and duration of the out-of-hours work;	Section 3.1 Appendix B
	(c) the noise characteristics and likely noise levels of the work; and	Section 2.3 Section 3.4 (Figure 3) Appendix B
	(d) likely mitigation and management measures which aim to achieve the relevant NMLs under Condition E43 (including the circumstances of when respite or relocation offers will be available and details about how the affected community can access these offers).	Section 2.2 Section 2.3 Appendix B
	<p>The outcomes of the community consultation, the identified respite periods and the scheduling of the likely out-of-hour work must be provided to the ER, EPA and the Planning Secretary prior to the out-of-hours work commencing.</p> <p><i>Note: Respite periods can be any combination of days or hours where out-of-hours work would not be more than 5 dB(A) above the RBL at any residence.</i></p>	This report.