

# **Sydney Metro WSA - SSTOM - OHE - E57 Orchard Hills Station Consultation report**

SMWSASSM-PLD-OHE-SN100-CG-RPT-000001 (Rev 06)

Parklife Metro D&C

## Version Control

Revision	Author	Date	Comments	Approved by
00		16/01/2024	Initial draft	
01		18/06/2024	Updated document	
02		13/09/2024	Updated document	
03		17/09/2024	Updated to address comments	
04		27/11/2024	Updated document	
05		10/03/2025	Updated document	
06		19/03/2025	Updated to address comments	

### Details of Revision Amendments Document Control

The Parklife Metro Environment Manager and the Parklife Metro Stakeholder & Community Engagement Director are responsible for ensuring this report is reviewed and approved and updated as required.

The Parklife Metro Community & Stakeholders Place Manager is responsible for the consultation and updating of this report, as required.

### Amendments

Any revisions or amendments must be approved by the Environment Manager and the Stakeholder & Community Engagement Director before being distributed and implemented.

# Contents

<b>Glossary</b> .....	<b>5</b>
<b>1 Overview</b> .....	<b>6</b>
1.1 Project background .....	6
1.2 SSTOM scope of works.....	6
1.2.1 Orchard Hills Metro Station .....	9
1.3 Out-of-hours scope of works .....	11
1.3.1 Ongoing oversized plant and equipment deliveries.....	11
1.3.2 Extended work hours for concreting and supporting formwork .....	11
1.3.3 Concrete batching plant operations.....	11
1.3.4 Utility investigation works – Caddens and Kent Road .....	12
1.3.5 Tunnel and underground station box fit out.....	12
1.3.6 Precast beam installation .....	12
<b>2 Conditions of Approval requirements</b> .....	<b>12</b>
2.1 Out-of-hours Works – Community Consultation on Respite .....	12
2.2 Respite eligibility.....	13
2.3 Mitigation measures and planned respite.....	14
<b>3 Consultation tools and channels</b> .....	<b>15</b>
3.1 Communications tools .....	15
3.2 Communication activities timeline .....	17
3.3 Stakeholder list.....	18
3.4 Distribution maps.....	19

<b>4</b>	<b>Conclusion.....</b>	<b>22</b>
<b>Appendix A</b>	<b>Noise modelling maps .....</b>	<b>23</b>
<b>Appendix B</b>	<b>Communication materials.....</b>	<b>35</b>
<b>Appendix C</b>	<b>Impacted properties and consultation records.....</b>	<b>42</b>
<b>Appendix D</b>	<b>Conditions of Approval (SSI 10051).....</b>	<b>43</b>

# Glossary

Standard terms and definitions.

TABLE 1. STANDARD TERMS

Term	Definition
Project	Sydney Metro – Western Sydney Airport
Parklife Metro	Consortium comprising entities of Plenary, Siemens Mobility, Siemens Financial Services, WeBuild and RATP Dev as successful contractors for the Sydney Metro Western Sydney Airport SSTOM Package.
Parklife Metro D&C	Parklife Metro Design and Construct. Consists of WeBuild S.P.A, Siemens Mobility Pty Ltd. Responsible for the construction of SSTOM Works

TABLE 2. ABBREVIATIONS

Term	Definition
CCMS	Construction Complaints Management System
CCS	Community Communications Strategy
CEMP	Construction Environmental Management Plan
CNVS	Sydney Metro Construction Noise and Vibration Standard
CNVIS	Construction Noise and Vibration Impact Statement
CNVMP	Construction Noise and Vibration Management Plan
CoA	Conditions of Approval
CSSI	Critical State Significant Infrastructure
DNVIS	Detailed Noise and Vibration Impact Statement
DPE	Department of Planning and Environment
EPA	NSW Environment Protection Authority
EPL	Environmental Protection Licence
OOH	Out-of-hours
OOHW	Out-of-hours work
OSOM	Over-size over-mass
SBT	Station boxes and tunnelling works
SCAW	Surface and civil alignment works
SM-WSA	Sydney Metro – Western Sydney Airport
SSTOM	Stations, Systems, Trains, Operations and Maintenance

# 1 Overview

This E57 Community Consultation Report provides a summary of consultation undertaken by Parklife Metro in accordance with Condition of Approval E57, with respect to out-of-hours work (OOHW), between March to May 2025. Works include deliveries of plant and equipment, extended work hours for concrete works, operation of concrete batch plant, waterproofing within the station box and dive areas, heavy vehicle movements, tunnel support and fit out, material crange, utility investigations and precast beam installation works at the Orchard Hills Metro Station site.

## 1.1 Project background

The Sydney Metro – Western Sydney Airport (SM-WSA) will become the transport spine for Greater Western Sydney, connecting communities and travellers with the new Western Sydney International (Nancy-Bird Walton) Airport and the growing region.

The city-shaping project, from St Marys through to the new airport and the Western Sydney Aerotropolis (the new suburb of Bradfield), will provide a major economic stimulus for western Sydney, supporting more than 14,000 jobs during construction for the NSW and national economies.

Jointly funded by the Australian and NSW Governments, the 23-kilometre new railway will link residential areas with job hubs including the new Aerotropolis and connect travellers from the new airport to the rest of Sydney's public transport system.

The Australian and NSW governments have awarded all three major contracts for the Sydney Metro – Western Sydney Airport project:

- Station boxes and tunnelling (SBT) – currently in delivery
- Surface and civil alignment works (SCAW) – currently in delivery
- Stations, Systems, Trains, Operations and Maintenance (SSTOM) – works commencing mid-late 2023.

## 1.2 SSTOM scope of works

In December 2022, the largest ever Public Private Partnership (PPP) contract in New South Wales, was awarded to Parklife Metro for the Stations, Systems, Trains, Operations and Maintenance (SSTOM) works for the Sydney Metro - Western Sydney Airport Project.

Parklife Metro will deliver:

- Around 4.3km of twin rail tunnels (generally located side by side) between St Marys (the Northern extent of the project) and Orchard Hills
- A cut-and-cover tunnel around 350 metres long (including tunnel portal), transitioning to an in-cutting rail alignment south of the M4 Western Motorway at Orchard Hills
- Around 10km of rail alignment between Orchard Hills and Western Sydney International, consisting of a combination of viaduct and surface rail alignment
- Around two kilometres of surface rail alignment within Western Sydney International Airport
- Around 3.3km of twin rail tunnels (including tunnel portal) within Western Sydney International Airport
- Around 3km of twin rail tunnels between Western Sydney International Airport and Bradfield
- Six new Metro Stations:
  - St Marys (providing an interchange with the existing Sydney Trains suburban rail network)
  - Orchard Hills
  - Luddenham
  - Airport Business Park

- Airport Terminal
- Bradfield (the new Western Parkland City)
- Grade separation of the track alignment at key locations including:
  - Where the alignment interfaces with existing infrastructure such as the Great Western Highway, M4 Western Motorway, Lansdowne Road, Patons Lane, the Warragamba to Prospect Water Supply Pipelines, Luddenham Road, the future M12 Motorway, Elizabeth Drive, Derwent Road and Badgerys Creek Road
  - Crossings of Blaxland Creek, Cosgroves Creek, Badgerys Creek and other small waterways to provide flood immunity for the Project
- Modifications to the existing Sydney Trains station and rail infrastructure at St Marys (where required) to support interchange and customer transfer between the new metro station and the existing Sydney Trains suburban rail network
- A stabling and maintenance facility and operational control centre located to the south of Blaxland Creek and east of the proposed metro track
- New pedestrian, cycle, park-and-ride and kiss-and-ride facilities, public transport interchange infrastructure, road infrastructure and landscaping as part of the station precincts.

Parklife Metro will also operate and maintain the Sydney Metro – Western Sydney Airport (SM-WSA) line, and its assets for 15 years after it becomes operational in 2026.

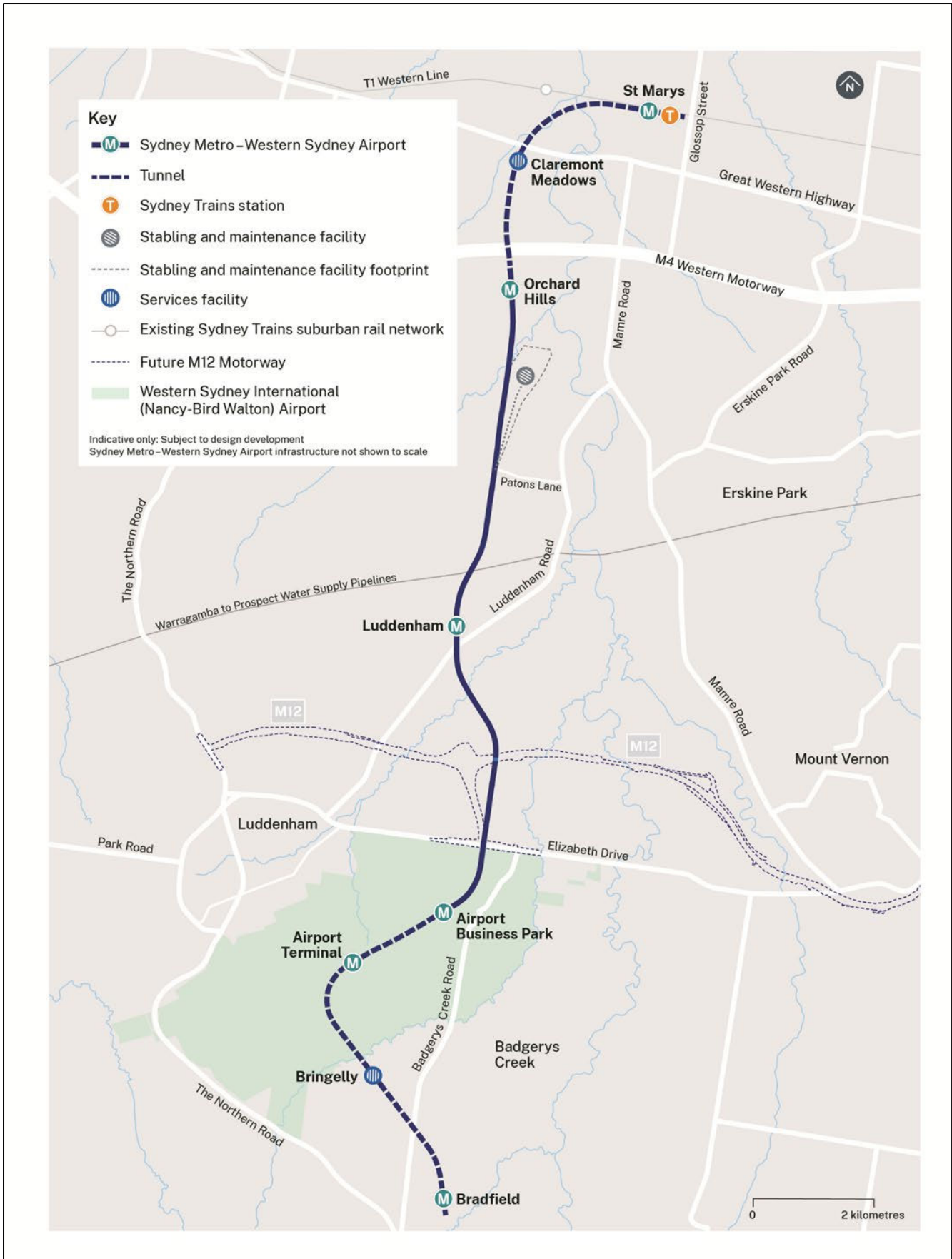


FIGURE 1. MAP OF THE SM-WSA PROJECT ALIGNMENT AND STATION LOCATIONS



## 1.2.1 Orchard Hills Metro Station

The Orchard Hills Metro Station will be an open cut station, located on the eastern side of Kent Road, at the intersection of Lansdowne Road. The station will have one entrance on Kent Road, with provision for a second entrance to be built east of the station in the future.

### **Key features and benefits of the Orchard Hills Metro Station will include:**

- Secure bicycle parking
- Park-and-ride facilities, with a capacity of up to 500 spaces
- Transport interchange facilities, including bus bays and shelters, kiss-and-ride bays, and point-to-point vehicle facilities
- Upgrades to Kent Road and Lansdowne Road, which will involve the construction of new precinct roads, installation of new pedestrian crossings, and the creation of a new public plaza adjacent to the proposed station entrance
- Potential for future station retail amenities

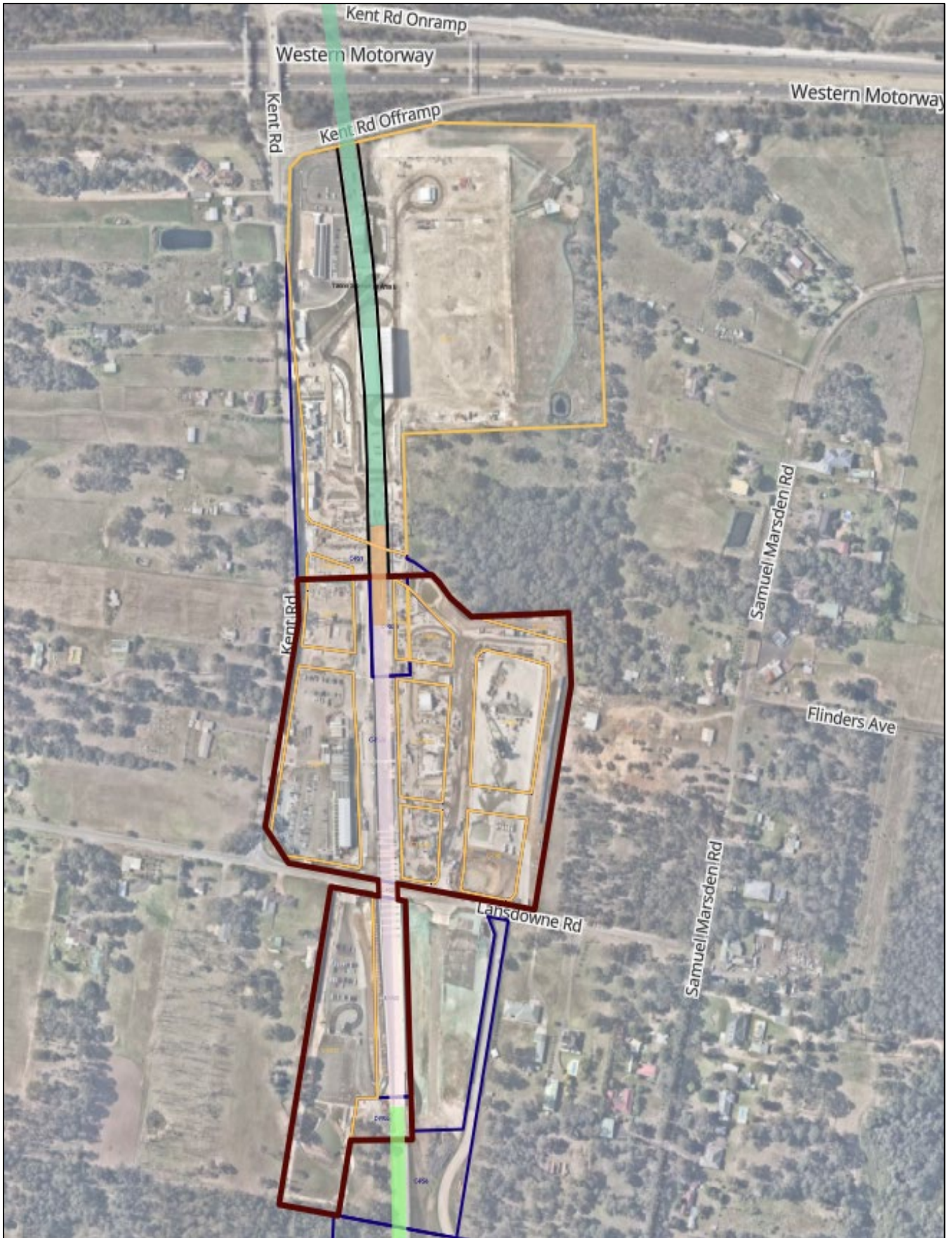


FIGURE 2. MAP OF THE ORCHARD HILLS METRO STATION

## 1.3 Out-of-hours scope of works

### 1.3.1 Ongoing oversized plant and equipment deliveries

Oversized plant, structures and materials deliveries are required at the Orchard Hills worksite to facilitate ongoing construction of the metro station. These oversized and/or overmass (OSOM) deliveries have been determined by the police or other authorised authorities to require special arrangements to transport along public roads (EPL L5.5 ii) and the relevant road network operator has confirmed that carrying out the works and activities during standard construction hours would result in a high risk to road network performance. In this regard, to access the road network, operating conditions including route and travel time restrictions have been applied to OSOM deliveries. Time restrictions require these OSOM vehicle movements to be carried out at night, and outside peak travel times when the road authority has granted approval to occupy the roadway. Access to the road network for OSOM deliveries is generally permitted between 9pm and 5am. This is to minimise impacts to traffic and reduce the risk to worker and road user safety.

Deliveries requiring out-of-hours work (OOHW) may include, but is not limited to:

- Mobile cranes
- Excavators
- Precast beams
- Other oversized materials and equipment.

### 1.3.2 Extended work hours for concreting and supporting formwork

Due to the size of the concrete pours for the station box base slabs and walls, we will require to work extended construction hours to complete the formworks, concrete pours and finishing works to mitigate any safety and quality risks.

Concrete activities extended hours are ongoing until approximately December 2025, as per EPL 21807 condition L5.10. Extended construction hours to complete the formworks, concrete pours and finishing works are permitted between the below timeframes:

- Monday to Friday: 5am to 7am and 6pm to midnight
- Saturday: 6am to 8am and 1pm to 6pm

Concrete and supporting formwork will continue from 5am to midnight Monday to Friday; and 6am to 6pm on Saturdays. The concrete and supporting formwork are permitted to occur outside of standard construction hours, a total of twelve times per month if going past 10pm.

### 1.3.3 Concrete batching plant operations

The Orchard Hills concrete batch plant will operate outside of standard construction hours to meet the required concrete supply demands for the SSTOM project. The construction of St Marys Station, Orchard Hills Station, Bradfield Station and the Stabling and Maintenance Facility will require a substantial volume of concrete as they all attract the same technical concrete requirements and are subject to the same concrete supply deficiencies. The concrete batch plant will operate outside of standard construction hours are ongoing until approximately December 2025 as per condition L5.13 of EPL 21807. The concrete batch plant is permitted to operate between the below timeframes:

- Monday to Friday: 5 am to 7 am and 6 pm to 10 pm
- Saturday: 6 am to 8 am and 1 pm to 6 pm



### 1.3.4 Utility investigation works – Caddens and Kent Road

Out-of-hours work will be required to locate a water main point along Kent Road, both to the north and south of the M4 Motorway. These investigations are critical to informing the design and construction processes for the future Orchard Hills Station water main.

*Note: The need for utility works has been captured generally as part of the consultation activities undertaken to date. Consultation will be carried out with identified sensitive receivers as required once details of the works are confirmed (details including dates, times, duration etc)*

### 1.3.5 Tunnel and underground station box fit out

Sydney Metro Western Sydney Airport is subject to infrastructure approval (application no. SSI 10051) and condition E41(d)(vi) of the planning approval states that:

*E41 Notwithstanding Conditions E38 and E39 work may be undertaken outside the hours specified in the following circumstances.*

(d) **By Prescribed Activity**, including:

*(vi) tunnel and underground station box fit out works are permitted 24 hours per day, seven days per week.*

To facilitate the tunnel and underground station fit out, material craneage works at Orchard Hills Station will commence within Q2 of 2025. This will involve a singular crane delivering materials into the station box with approval to operate 24 hours a day, 7 times a week.

PLM is expecting to have these works to be approved under the EPL. The application to update condition L5.14 to include Orchard Hills site is currently being reviewed by the EPA.

### 1.3.6 Precast beam installation

It is proposed that the precast beams will be unloaded and installed at the time of delivery. Upon arrival of the OSOM vehicle to site, the beams will be craned into position and then installed (horizontally) across the station box. This methodology, (unloading during extended hours), has been selected due to the requirement for exclusion zones to be implemented at both the top (surface level) and bottom (base) of the station box during both unloading and installation (i.e. to ensure worker safety). These works are expected to occur from April 2025 till August 2025.

PLM is expecting to have these works to be approved under the EPL. The application to update condition L5.11 to include Orchard Hills site is currently being reviewed by the EPA.

## 2 Conditions of Approval requirements

This E57 Community Consultation Report provides a summary of consultation undertaken in accordance with Condition of Approval E57 with respect to out of hours work, between March to May 2025 and activities proposed at the Orchard Hills Metro Station site.

### 2.1 Out-of-hours Works – Community Consultation on Respite

**Condition of Approval E57 states:**

In order to undertake out-of-hours work outside the work hours specified under Condition E38, appropriate respite periods for the out-of-hours work must be identified in consultation with the community at each affected location on a regular basis. This consultation must include (but not be limited to) providing the community with:

- (a) a progressive schedule for periods no less than three (3) months, of likely out-of-hours work;
- (b) a description of the potential work, location and duration of the out-of-hours work;
- (c) the noise characteristics and likely noise levels of the work; and

(d) likely mitigation and management measures which aim to achieve the relevant noise management levels (NMLs) under Condition E43 (including the circumstances of when respite or relocation offers will be available and details about how the affected community can access these offers).

The outcomes of the community consultation, the identified respite periods and the scheduling of the likely out-of-hour work must be provided to the ER prior to the out-of-hours work commencing.

Note: Respite periods can be any combination of days or hours where out-of-hours work would not be more than 5 dB(A) above the RBL at any residence.

## **2.2 Respite eligibility**

In accordance with the Sydney Metro Construction Noise and Vibration Standard (CNVS), the Construction Noise and Vibration Management Plan (CNVMP), and the Detailed Noise and Vibration Impact Statements (DNVIS); all noise affected receivers are eligible for respite periods, applicable during out-of-hours activities when works are predicted to exceed the NML's unless the out-of-hours works are subject to an EPL or a CSSI Planning Approval condition.

Additional mitigation measures as per the CNVS, CNVMP and DNVIS are included in Table 1 below.

TABLE 1. OUT-OF-HOURS MITIGATION MEASURES AS PER THE PROJECTS ENVIRONMENTAL PLANNING DOCUMENTS

Time period		Mitigation measures for predicted LAeq (15 minute) airborne noise level above NML			
		0-10dB	10-20dB	20-30dB	>30dB
<b>Approved construction hours</b>	Mon-Fri (7:00am - 6:00pm)				
	Sat (8:00am – 1:00pm)	-	LB	LB, M, SN	LB, M, SN
	Sun/Pub Hol (Nil)				
<b>OOHW (Evening)</b>	Mon-Fri (6:00pm – 10:00pm)				
	Sat (1:00pm – 10:00pm)	LB	LB, M	LB, M, SN, RO	LB, M, SN, IB, PC, RO
	Sun/Pub Hol (8:00am – 6:00pm)				
<b>OOHW (Night)</b>	Mon-Fri (10:00pm – 7:00am)				
	Sat (10:00pm – 8:00am)	LB	LB, M, SN, RO	LB, M, SN, IB, PC, RO, AA	LB, M, SN, IB, PC, RO, AA
	Sun/Pub Hol (6:00pm – 7:00am)				

NOTE: Phone calls (PC), Monitoring (M), Individual briefings (IB), Alternative Accommodation (AA), Specific Notification (SN), letterbox drop (LB), Duration Reduction (DR), Project Specific Respite Offer (RO).

## 2.3 Mitigation measures and planned respite

This work is expected to generate intermittent periods of noise, when the delivery trucks have reached site, and unloading the equipment. For the proposed out-of-hours work, the following mitigation measures and respite will be implemented:

- Noise barriers in the form of a spoil mound and shipping containers installed between the concrete batch plant and the closest receivers
- Works affecting the same sensitive receivers will not be undertaken more than three nights in a week, more than two consecutive nights, or more than 10 nights in a month (unless specified by an EPL condition, as reported in Section 1)
- Concrete activities (as per EPL L5.10 – formworks, pouring and finishing) that occur outside of standard construction hours are permitted on 12 occasions per month
- Noise monitoring will be undertaken to confirm our noise modelling, and inform additional mitigation measures, as required
- Noise blankets will be used when performing smaller tasks where sporadic high noise levels are expected
- All vehicles will be turned off when not in use, non-tonal reversing alarms will be fitted to plant and machinery, and trucks will avoid reversing, where feasible
- Temporary lighting will be directed away from properties, to avoid light spill
- Communication will be limited to radios only when moving and unloading equipment, with no shouting, use of horns or loud radios, unless there is an emergency
- Use of rubber faced mullets instead of hammers to reduce metal to metal contact

- Ongoing doorknocks and consultation, to seek further feedback, and to be able to address any reasonable concerns
- Co-ordination of out-of-hours works with nearby construction projects to minimise cumulative noise impact to sensitive receivers and ensure that respite periods are met.

### 3 Consultation tools and channels

Community consultation has been undertaken prior to commencement of the out-of-hours work in accordance with the PLM Community Communications Strategy (CCS) and the Project’s Environmental Protection Licence (EPL) 21807.

#### 3.1 Communications tools

Consultation includes a range of tools including:

Type	Purpose and use
<b>Monthly construction updates</b>	<p>A monthly construction update distributed at the start of each month, providing details on:</p> <ul style="list-style-type: none"> <li>• Upcoming construction activities for the month, including any OOHW</li> <li>• Hours of work, and durations</li> <li>• Equipment used on site</li> <li>• Traffic, pedestrian and cyclist routes on any changes, closures, and/detours</li> <li>• Likely impacts of construction activities, including noise, vibration, traffic, access, and dust</li> <li>• Mitigation measures to reduce the impacts of activities</li> <li>• Work location maps</li> <li>• Contact details, including how feedback can be provided</li> </ul>
<b>Out-of-hours notifications</b>	<p>An out-of-hours notification distributed to a 200m radius of site, or further as required to notify all noise affected receivers, no less than seven calendar days and no more than 14 calendar days, prior to OOHW commencing, providing details on:</p> <ul style="list-style-type: none"> <li>• Upcoming OOH construction activities, including hours of work and durations</li> <li>• Equipment used on site</li> <li>• Traffic, pedestrian and cyclist routes on any changes, closures, and/detours</li> <li>• Likely impacts of construction activities, including noise, vibration, traffic, access, and dust during the OOHW</li> <li>• Mitigation measures to reduce the impacts of activities during the OOHW</li> <li>• OOHW location maps</li> <li>• Contact details, including how feedback can be provided</li> </ul>

<b>Specific notifications</b>	<p>Specific notification distributed to those identified as impacted receivers during the OOHW.</p> <p>Specific notification is used to support the monthly construction updates and OOHW notifications, to provide additional details on the impacts, and any changes that may occur.</p>
<b>Doorknocks</b>	Doorknocks to impacted properties to consult on the proposed OOHW, and any feedback.
<b>Community Information Line: 1800 717 703</b>	Provides community access to the project communications team during construction hours. OOH complaints will be referred to the on-call Place Manager.
<b>Sydney Metro email: sydneymetrowsa@transport.nsw.gov.au</b>	Provides access during business hours to the Sydney Metro project communications team. Website enquiries are directed through this email address.
<b>Postal address for written feedback: Sydney Metro, PO BOX K659 Haymarket, NSW 1240</b>	Provides access to the broader Sydney Metro project. Address is included in all notifications and newsletters.
<b>Consultation Manager</b>	All interactions with stakeholders will be recorded in this database which is established by Sydney Metro.



## 3.2 Communication activities timeline

TABLE 3. COMMUNICATION ACTIVITIES TIMELINE

Date	Activity	
<b>28 May 2024</b>	Monthly construction update distributed to 200m of site.	Distribution to properties in Figure 2. Also includes: Campaign email Notification uploaded to SM website
<b>17 June 2024</b>	Specific notification distributed for extended work hours for concreting works.	Properties listed in Appendix C
<b>18 June 2024</b>	Doorknock properties as a courtesy directly adjacent to the worksite with specific notification for extended work hours for concreting works.	Targeted doorknock to properties in Section 3.3, Table 4 - Extended hours – concrete pours and concrete finishing works  SWMY slips left if no contact was made.
<b>Ongoing</b>	Re-engagement with the community on any proposed OOHW. All feedback received will be considered and implemented, where feasible.	
<b>Ongoing</b>	Re-engagement with the community prior to the operations of the concrete batching plant commencing, to advise and receive any feedback that may be considered and implemented	
<b>Ongoing</b>	Re-engagement with the community on any proposed OOHW. All feedback received will be considered and implemented, where feasible.	
<b>Ongoing</b>	Re-engagement with the community on any proposed OOHW. All feedback received will be considered and implemented, where feasible.	
<b>25 November 2024</b>	Doorknock properties as a courtesy directly adjacent to the worksite with specific notification for extended work hours for concreting works and concrete batching plant.	Targeted doorknock to properties in Section 3.3, Table 4 - Extended hours – batching plant and concrete pours.
<b>27 January 2025</b>	Monthly construction update distributed to 200m of site.	Distribution to properties in Figure 2. Also includes: Campaign email Notification uploaded to SM website

Re-engagement with the community on any proposed OOHW All feedback received will be considered and implemented, where feasible.

Distribution to properties in Figure 3.

Also includes:

Doorknocks

Campaign email

Notification uploaded to SM website

### 3.3 Stakeholder list

TABLE 4. STAKEHOLDER LIST FOR DISTRIBUTION AREAS

Stakeholder	Location	Communication activities
<b>Broader distribution area (Properties listed in Appendix C)</b>	250m of site – Orchard Hills Metro Station	Monthly notifications
	Extended notification distribution area to all noise affected receivers.	OOHW notifications
		Campaign emails
<b>Impacted properties from OOH works</b>	107 Kent Rd, Orchard Hills	Monthly notifications
	40 Lansdowne Rd, Orchard Hills	OOHW notifications
	50 Lansdowne Rd, Orchard Hills	Specific notifications
	36 Doncaster Av, Claremont Meadows	Campaign emails
	38 Doncaster Av, Claremont Meadows	Doorknock
	40 Doncaster Av, Claremont Meadows	
	42 Doncaster Av, Claremont Meadows	
	44 Doncaster Av, Claremont Meadows	
	46 Doncaster Av, Claremont Meadows	
	48 Doncaster Av, Claremont Meadows	
	50 Doncaster Av, Claremont Meadows	
	52 Doncaster Av, Claremont Meadows	
	54 Doncaster Av, Claremont Meadows	
	56 Doncaster Av, Claremont Meadows	
	58 Doncaster Av, Claremont Meadows	
60 Doncaster Av, Claremont Meadows		
62 Doncaster Av, Claremont Meadows		
64 Doncaster Av, Claremont Meadows		

### 3.4 Distribution maps

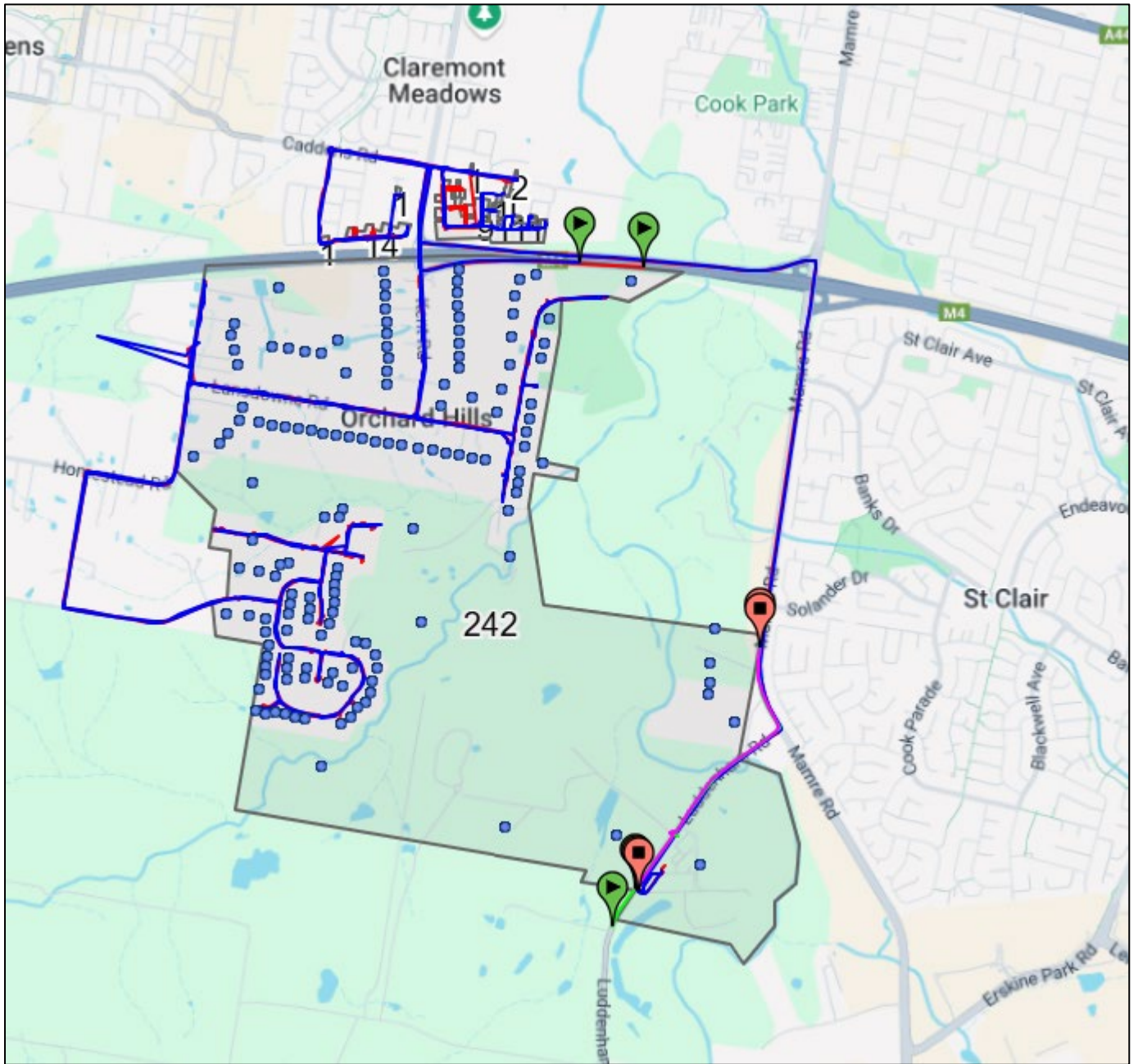


Figure 3. DISTRIBUTION MAP TO NOISE IMPACTED RECIEVERS (ORCHARD HILLS AND SMF)



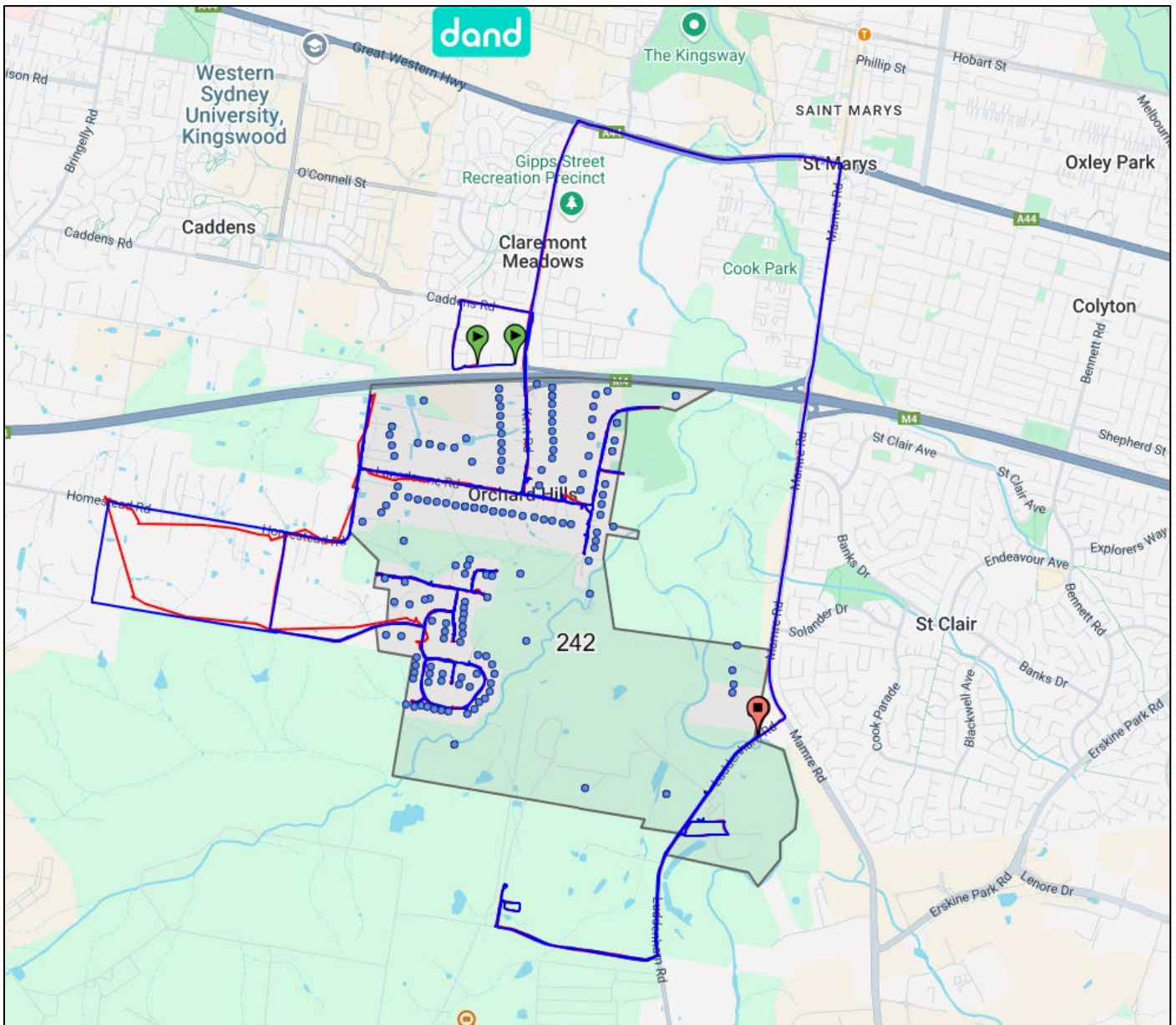


FIGURE 4. DISTRIBUTION MAP - DISTRIBUTION MAP TO NOISE IMPACTED RECEIVERS (ORCHARD HILLS AND SMF)

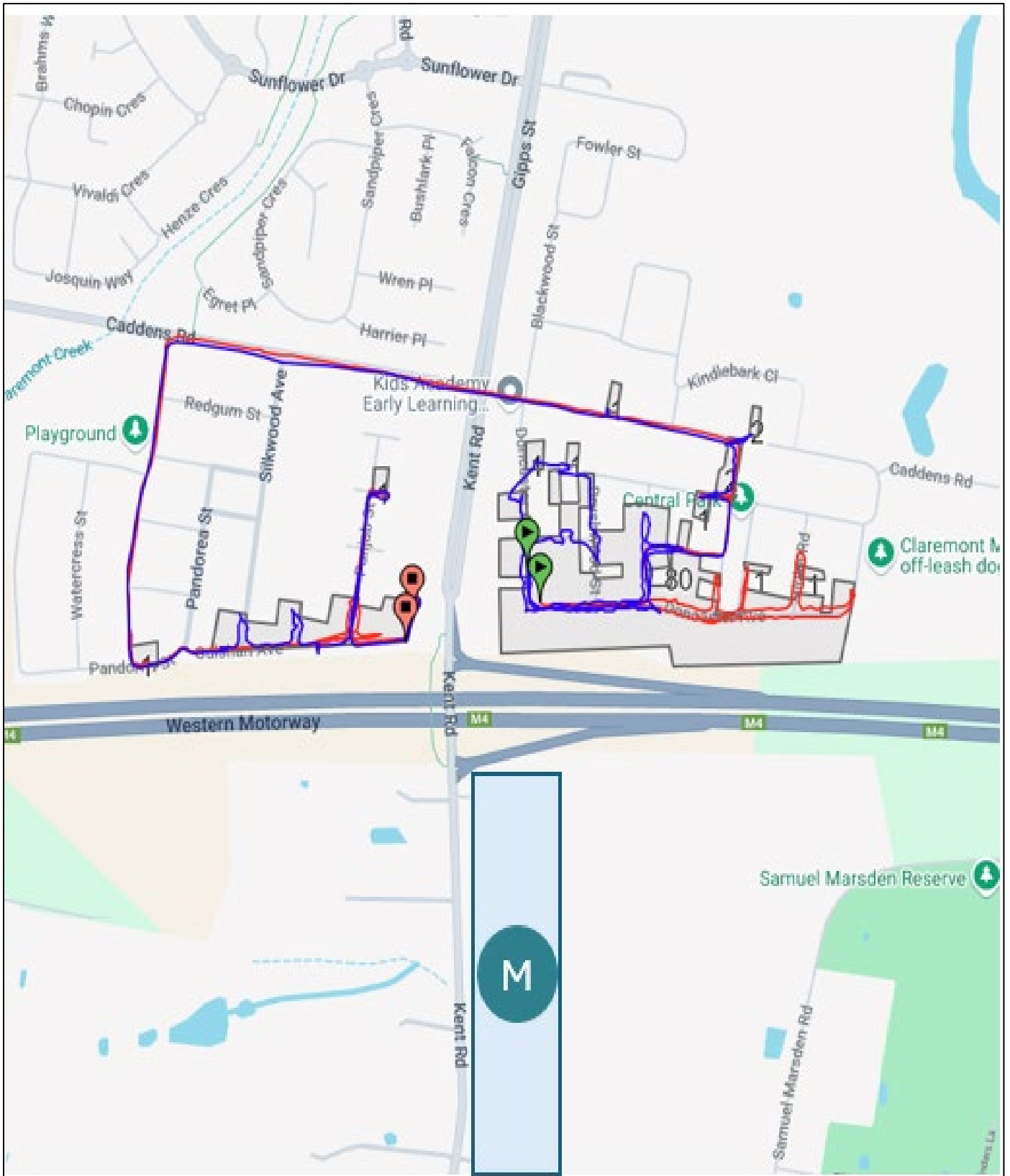


FIGURE 5. DISTRIBUTION MAP TO NOISE IMPACTED RECEIVERS

## 4 Conclusion

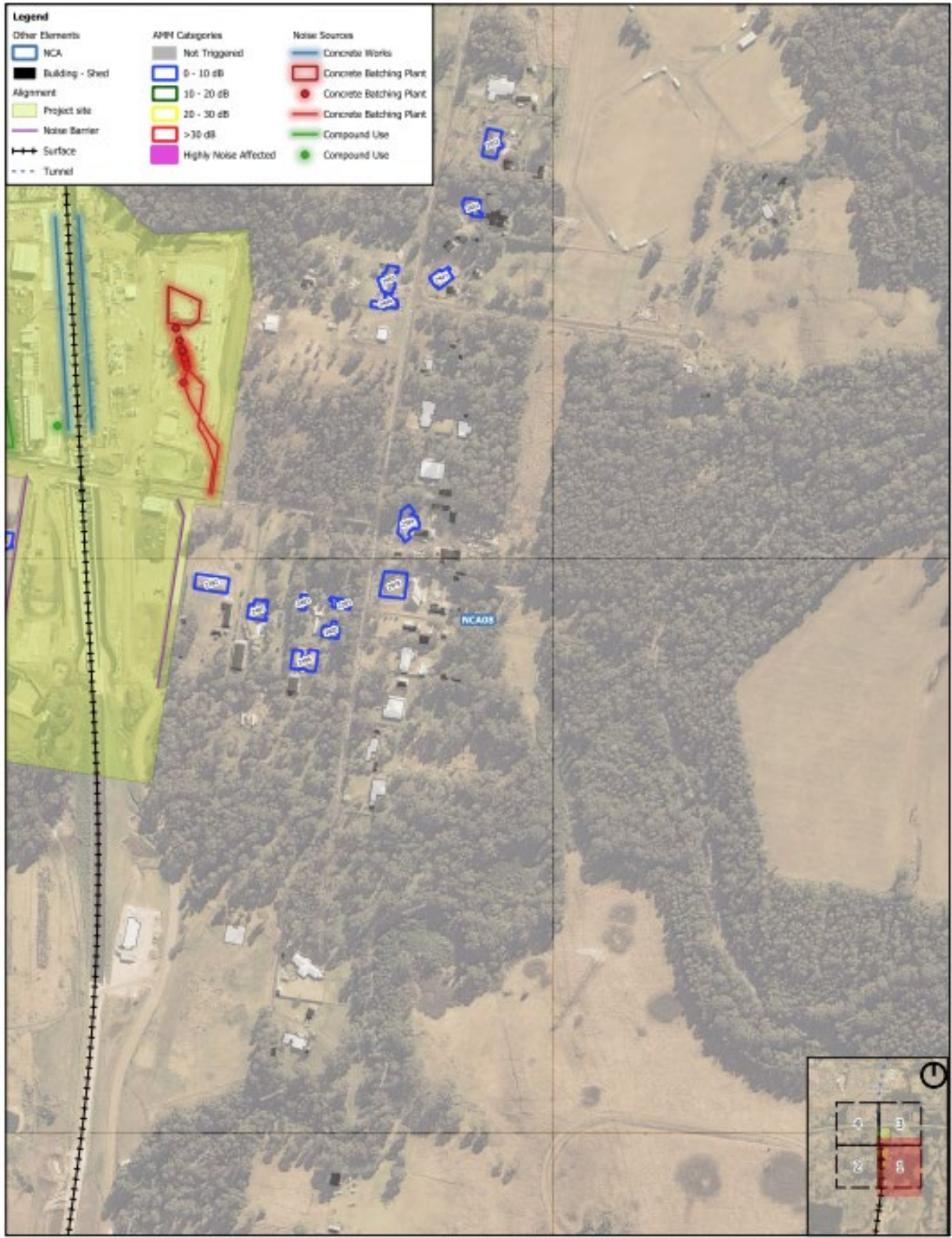
All consultation undertaken to date, including monthly construction updates; OOHW notifications, specific notifications and door knocks to all noise affected receivers identified in our noise modelling has resulted in no feedback or preferences on specific mitigation measures or respite periods. Receivers have agreed to the respite periods proposed for all upcoming OOHW.

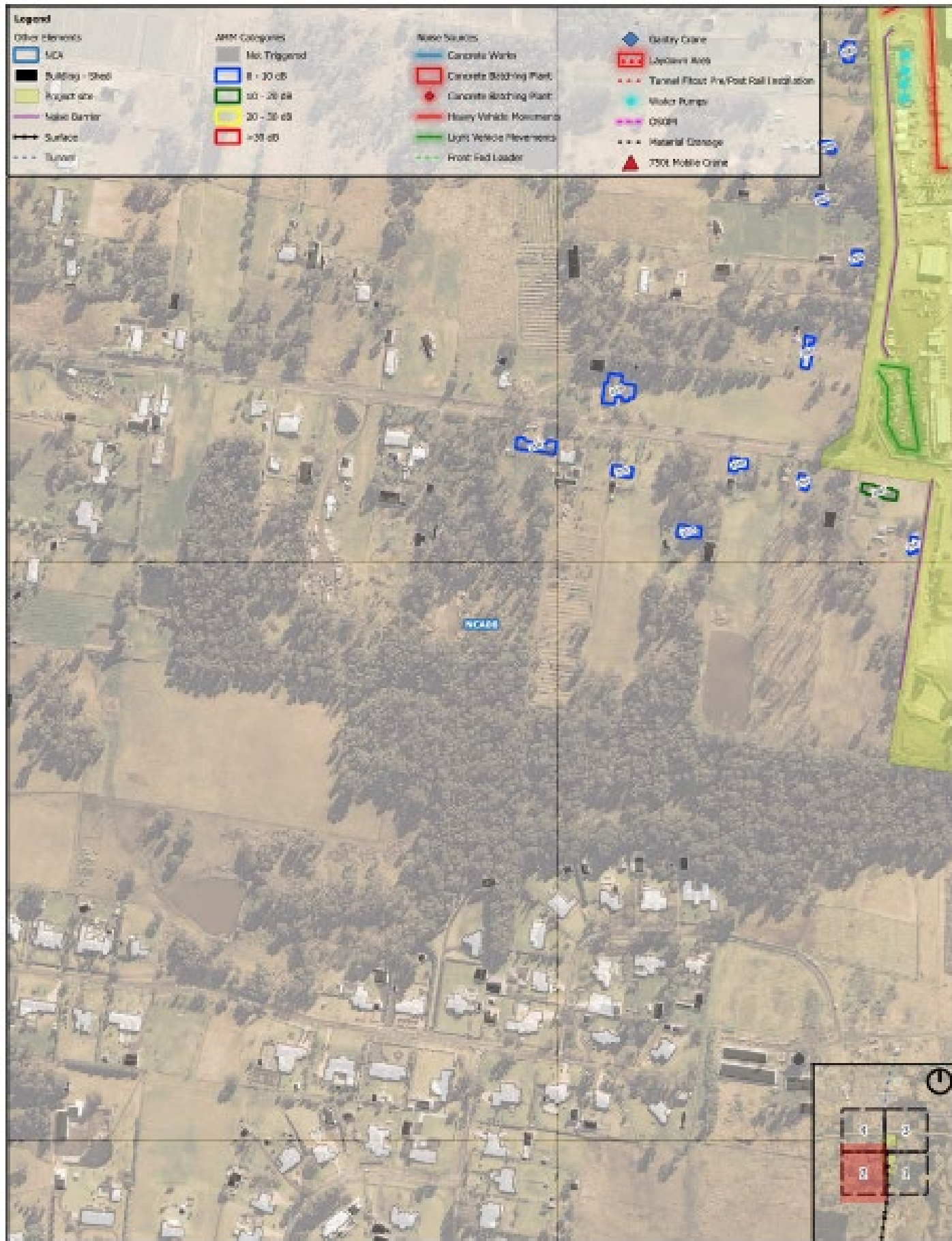
The standard mitigation measures and respite requirements established in the Sydney Metro Construction Noise and Vibration Standard and Project EPL 21807, will be implemented during the works and follow-up consultation will be undertaken by the Parklife Metro Community Place Manager to ascertain the effectiveness of the implemented controls and seek additional feedback.

As per E57, if any feedback is received it will be considered and implemented where feasible, and any specific feedback or preferences on mitigation measures will require a revision of the DNVIS.

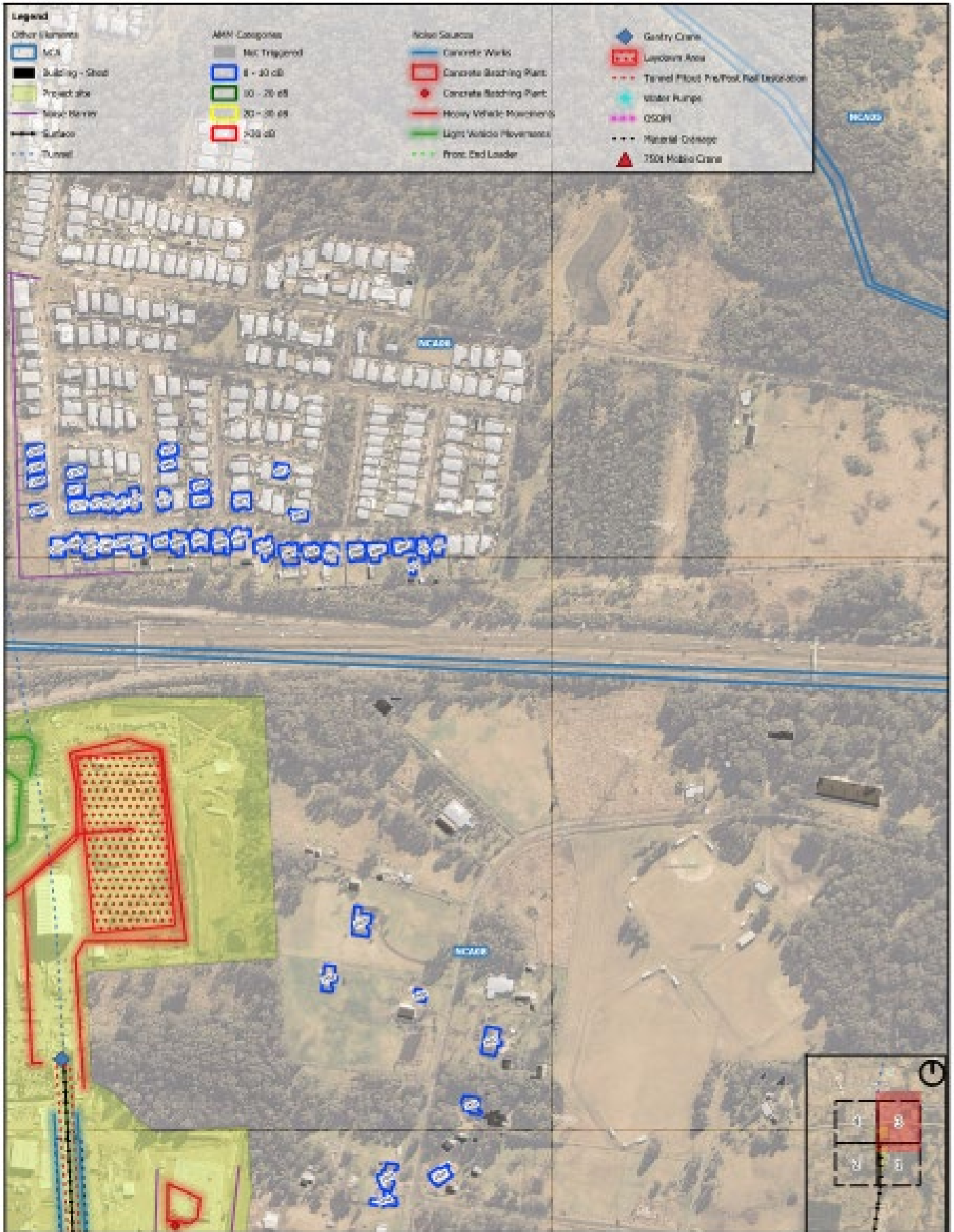


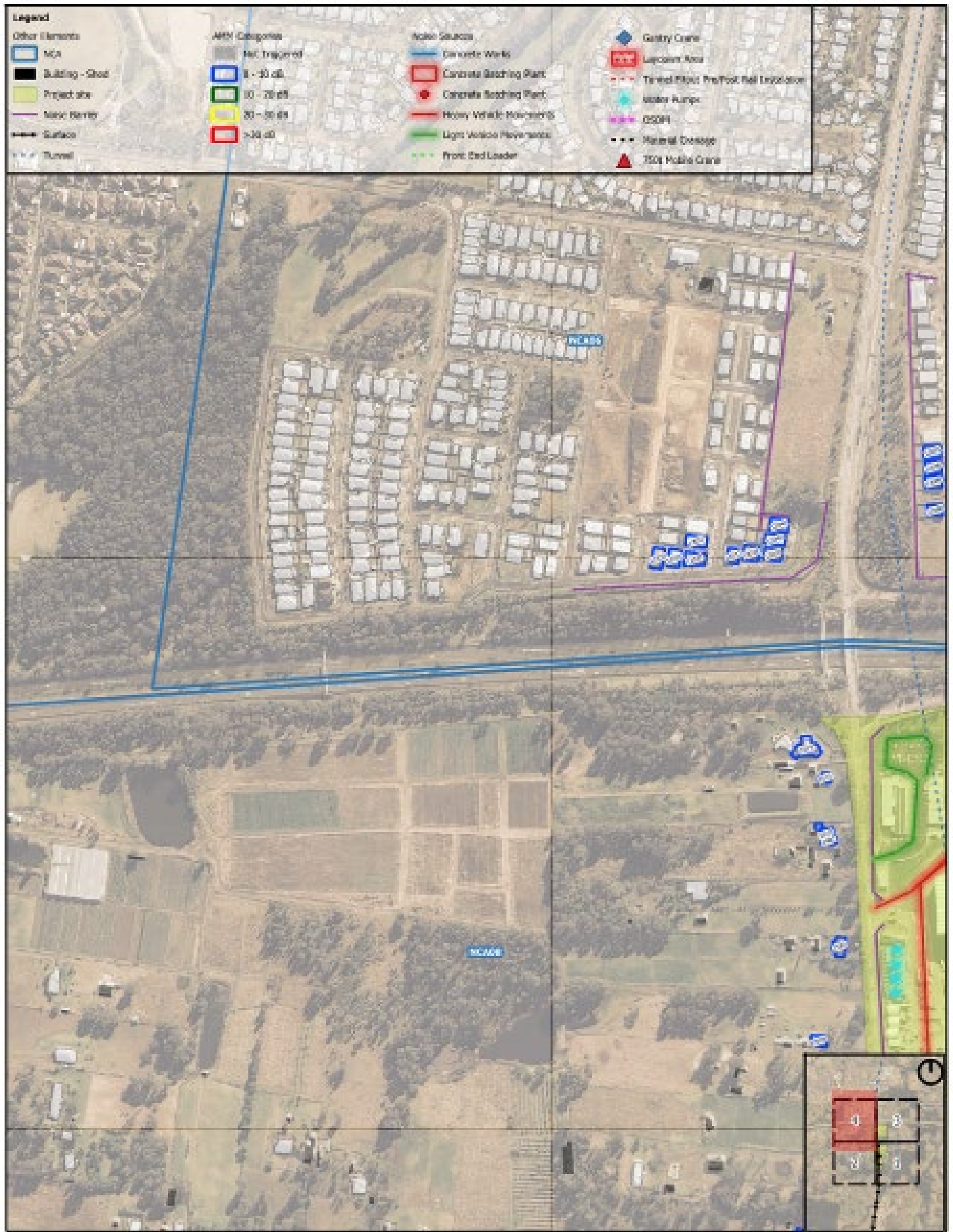
# Appendix A Noise modelling maps

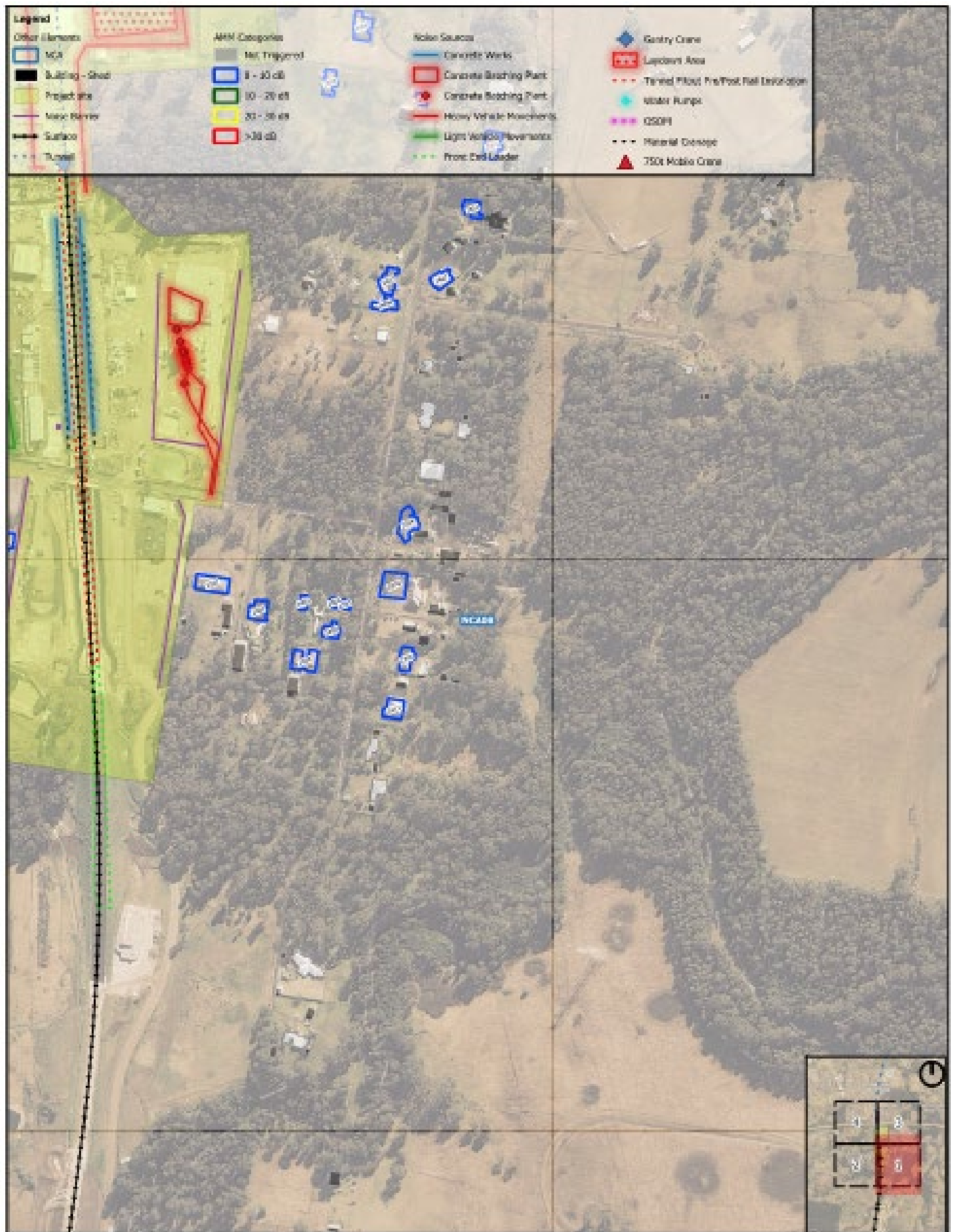


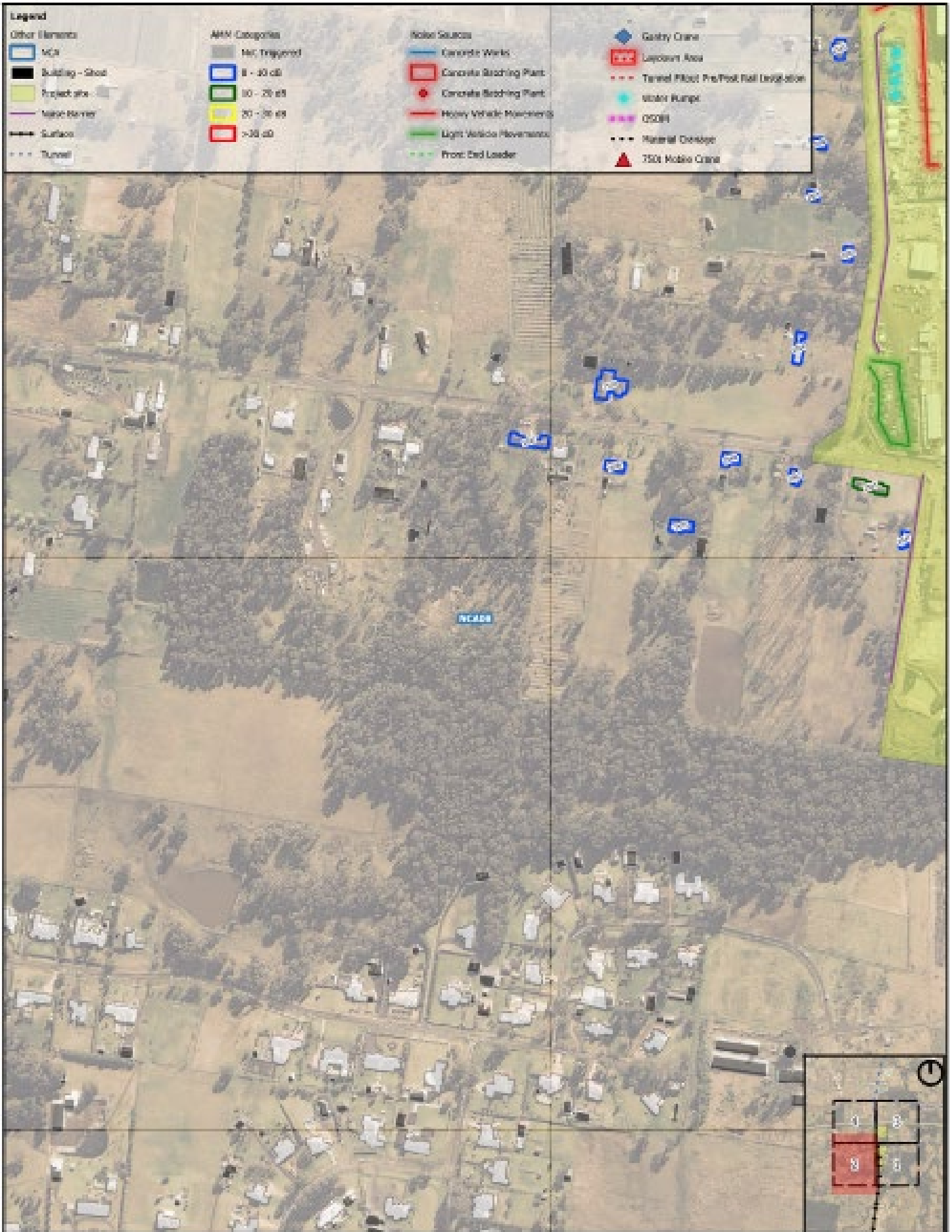


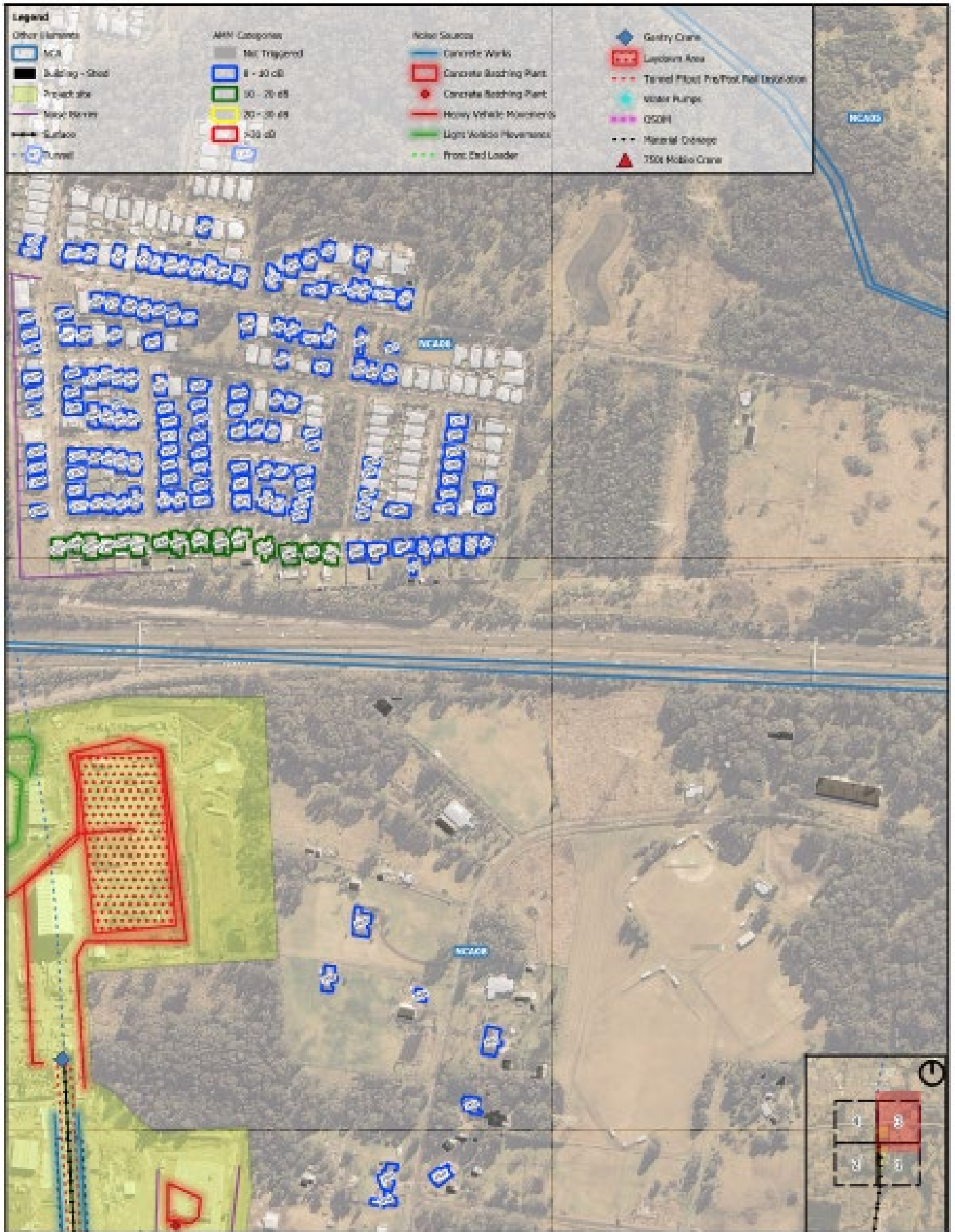






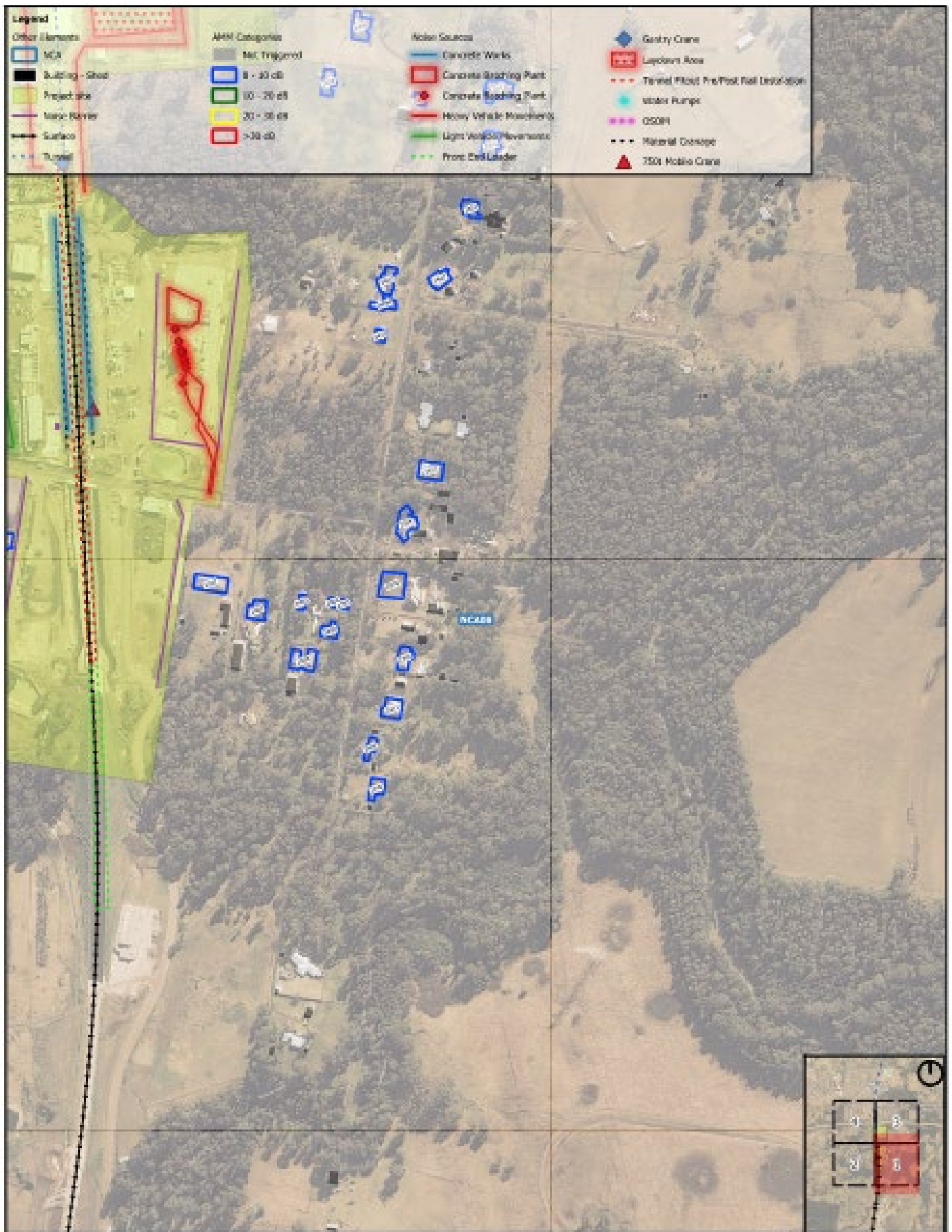


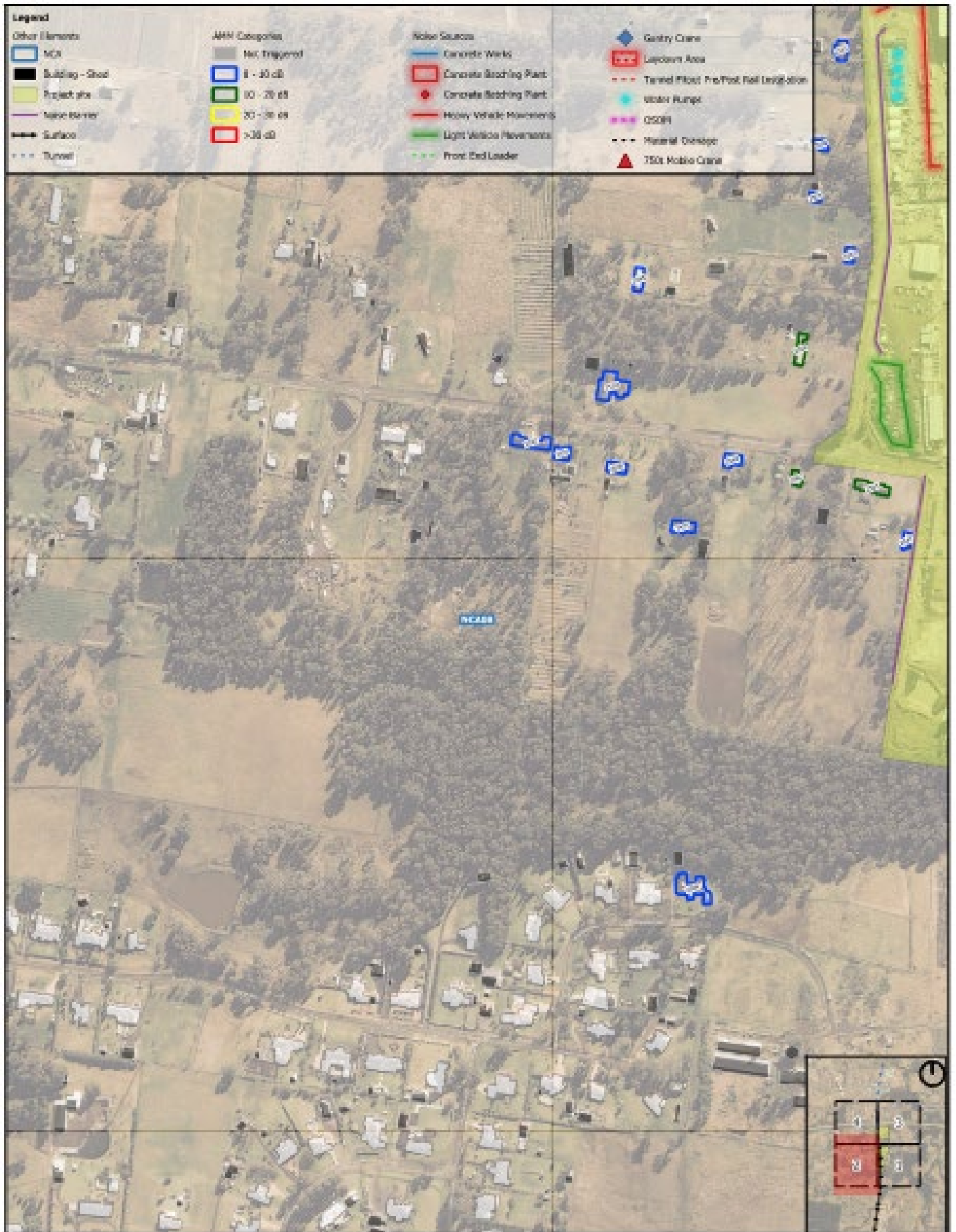




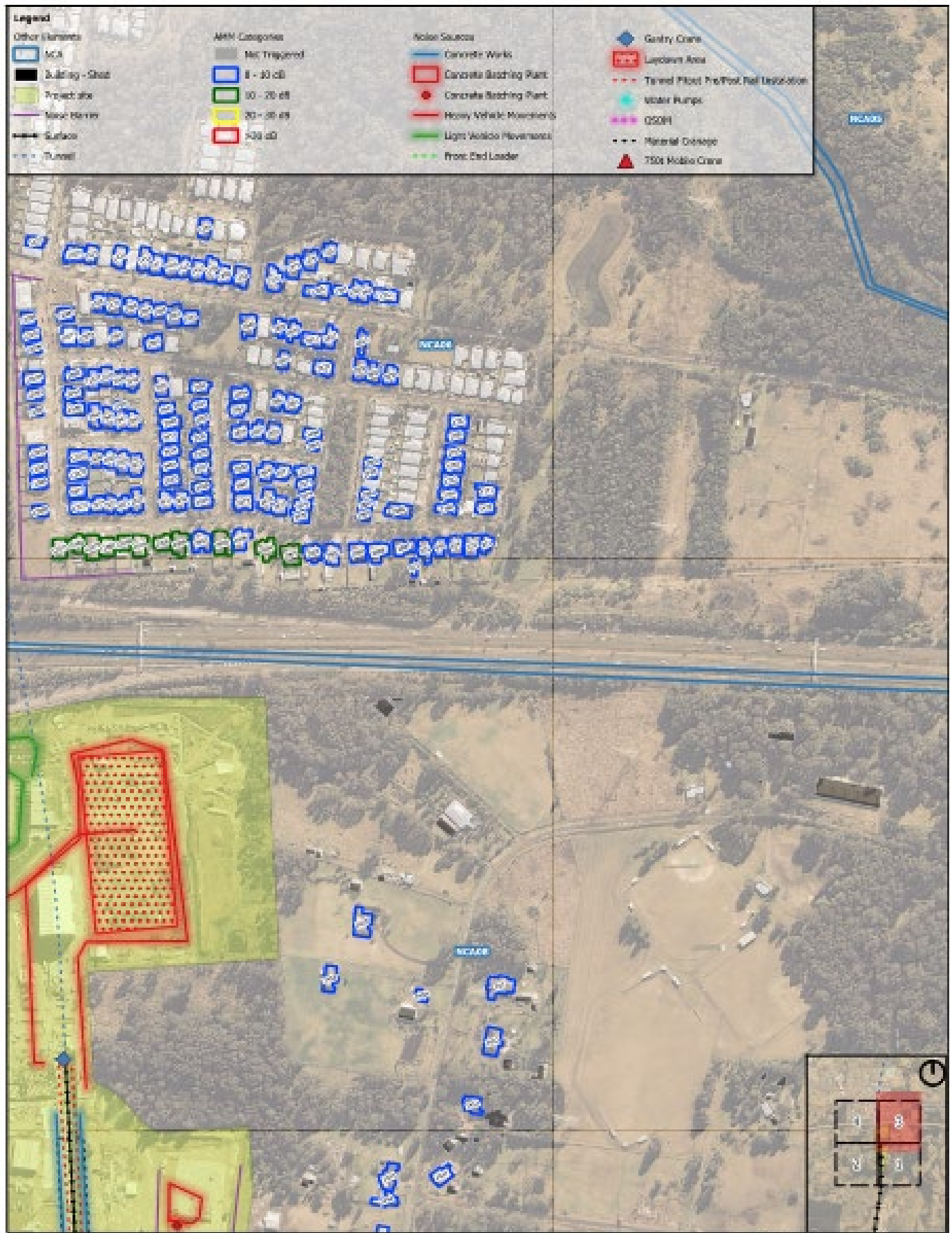


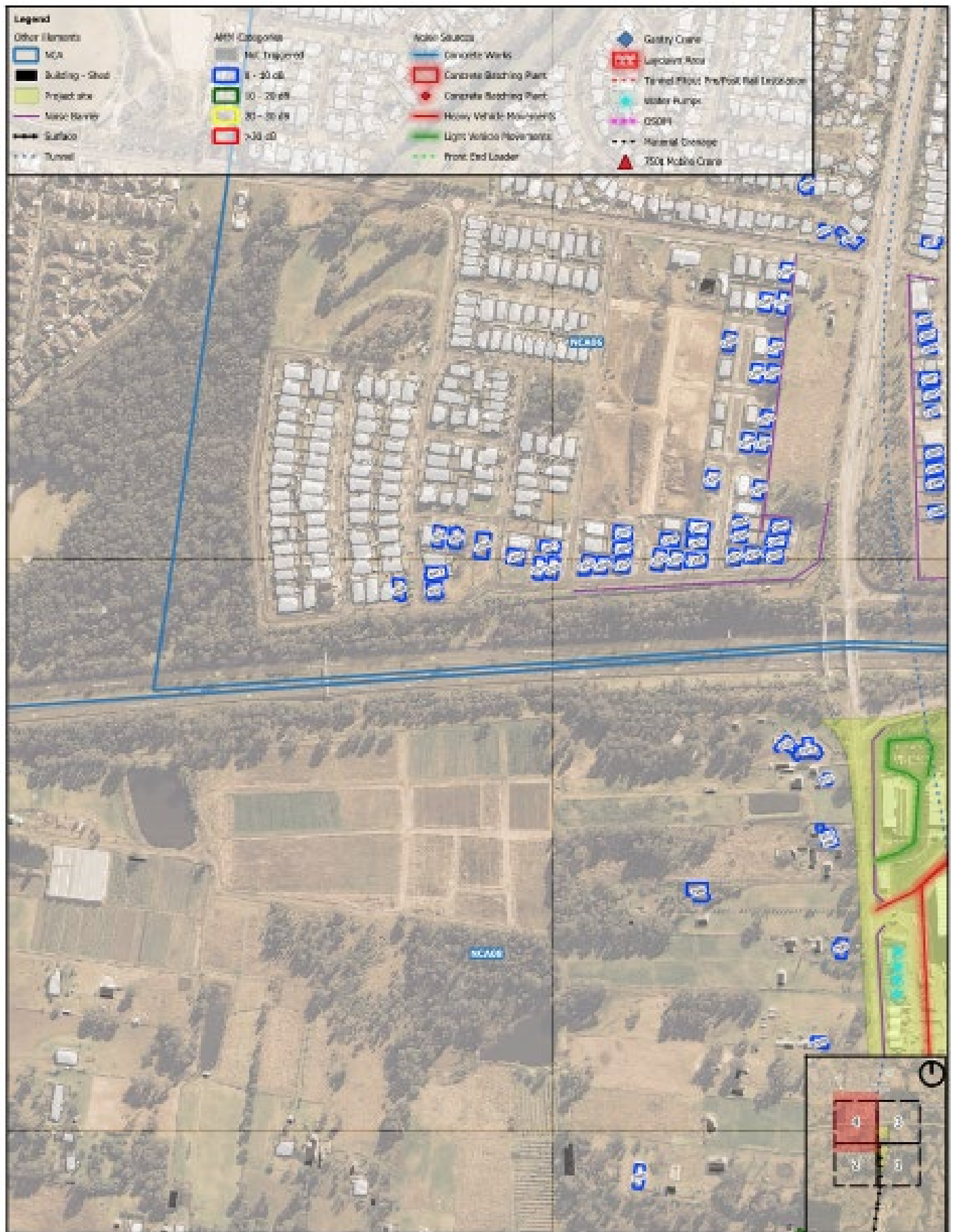












# Appendix B Communication materials

## MONTHLY CONSTRUCTION UPDATE

### Notification – Orchard Hills Metro Station and the Stabling and Maintenance Facility

Sydney Metro is Australia's biggest transport project.

April 2025

Sydney Metro – Western Sydney Airport is the new metro railway line which will service Greater Western Sydney and the new Western Sydney International (Nancy-Bird Walton) Airport. A city-shaping project, the new 23-kilometre metro railway will connect Bradfield city centre with St Marys in the north – where customers can connect to the existing Sydney Trains suburban T1 Western Line. The NSW and Australian governments have a shared objective of having Sydney Metro – Western Sydney Airport operational when the airport opens for passenger services.

Parklife Metro consortium is delivering the Stations, Systems, Trains, Operations and Maintenance (SSTOM) works. See the list below for the work activities at Orchard Hills during April. See maps for the work locations.

Stations, Systems, Trains, Operations and Maintenance work includes:

#### Orchard Hills Metro Station:

- formwork, steel fixing and concrete pours inside the Station Box
- completion of the concrete batching plant on the eastern end of the site, which will provide concrete services to multiple SSTOM sites and locations
- construction of internal blockwork walls inside the Station Box
- surveying and geotechnical investigations, including potholing, non-destructive digging and testing along local surrounding roads to inform utility designs
- road surface and restoration work, including filling in potholes on Kent and Lansdowne Road.

#### Stabling and Maintenance Facility:

- major earthworks including importing materials, excavations and compacting for the rail areas, and substation, operations control centre buildings and the maintenance and administration building
- construction of a new 132kV powerline, ongoing from the future substation area, working towards and on Patons Lane
- major drainage works including excavations, installing pits and pipes, and backfilling
- site-wide concrete works, including formwork, steel fixing for various structures such as the substation, Maintenance Administration Building, Operations Control Centre, and across the site
- commencement of Combined Services Route (CSR) and trunk service installation.

#### Linewide works:

- ongoing deliveries of rail track, materials, machinery and equipment to the project alignment both north and south of Patons Lane
- establishment of crane pads and stairs from the ground to the viaduct
- installation of galvanised steel troughing (GST)

- installation of overhead catenary system structure (OCSS) and installation of the combined service route and all electrical, communication and signalling conduits, including earthworks
- formwork, reinforcement and concrete pour work on Blaxland Viaduct, Unnamed Viaduct, and in tunnels.

#### Out-of-hours work includes:

- delivery of over-sized equipment and machinery and materials to the Orchard Hills Metro Station and the Stabling Maintenance Facility sites
- precast beam delivery and installation at Orchard Hills Metro Station
- extended work hours for excavation, steel fixing, concrete pours and concrete finishing works inside the station box at the Orchard Hills site and across various at the Stabling Maintenance Facility
- dewatering activities at the Orchard Hills and Stabling Maintenance Facility sites
- concrete batching plant operations at the Orchard Hills Metro Station site
- construction of a new 132 kilovolt powerline on Patons Lane including excavations, trenching and backfilling, cable laying, and installation of utility services
- commencement of Combined Services Route (CSR) and trunk service installation
- concreting and formwork for the Unnamed Viaduct
- service utility installations and surveying
- road surface and restoration works, including filling in potholes on Kent and Lansdowne Road.

#### Work hours:

Standard construction hours are **Monday to Friday from 7am to 6pm** and **Saturdays from 8am to 1pm**.

Some work will also be required to take place outside our standard construction hours to minimise traffic impacts or to ensure the safety of pedestrians, motorists and our workers. Out-of-hours work activities will be carried out in line with the project Environmental Protection Licence, Road Occupancy Licences, and Transport for NSW requirements.

*Impacted surrounding residents and businesses will be notified in advance of any out-of-hours work.*

#### What to expect:

- mitigation measures will be in place to minimise impacts including installing noise blankets, where feasible, respite periods during high noise activities, noise and vibration monitoring, and water carts for dust suppression
- increased light and heavy vehicle movements on surrounding roads, and local road closures. All vehicles will be turned off when not in use, non-tonal reversing alarms will be fitted to plant and machinery and trucks will avoid reversing into and on site, where feasible
- temporary lighting to ensure a safe worksite will be directed away from properties
- communication will be limited to radios only when moving and unloading equipment, with no use of horns or loud radios
- traffic control and signage to safely assist motorists, pedestrians, and cyclists.

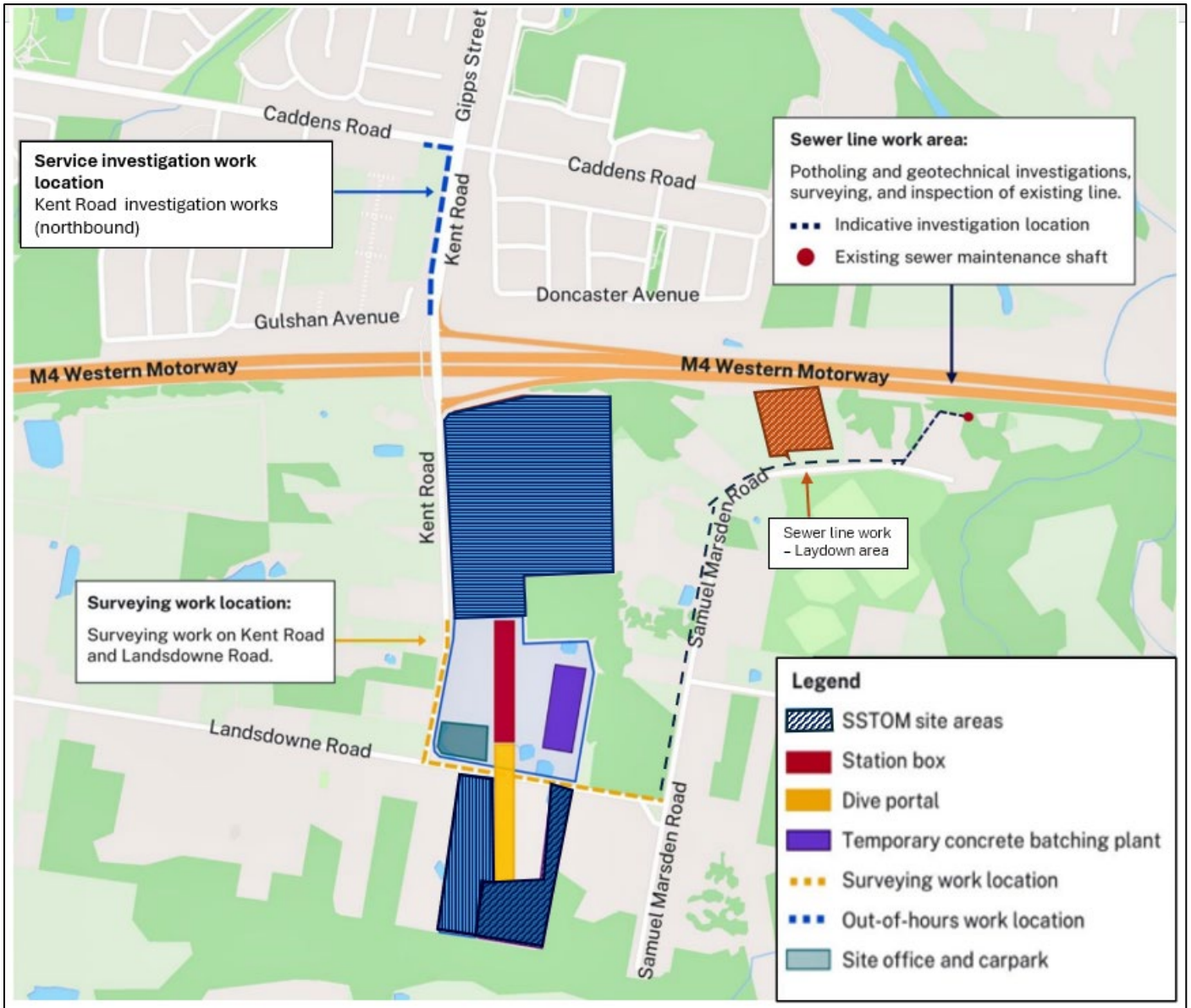
#### Equipment used:

Equipment used will include, but is not limited to, excavators, cranes, dozers, graders, rollers, vacuum truck, water carts, heavy and light site vehicles, generators, survey equipment, traffic management devices, concrete agitators, pneumatic drills, concrete saws, bobcats, chainsaws, telehandler and powered hand tools.

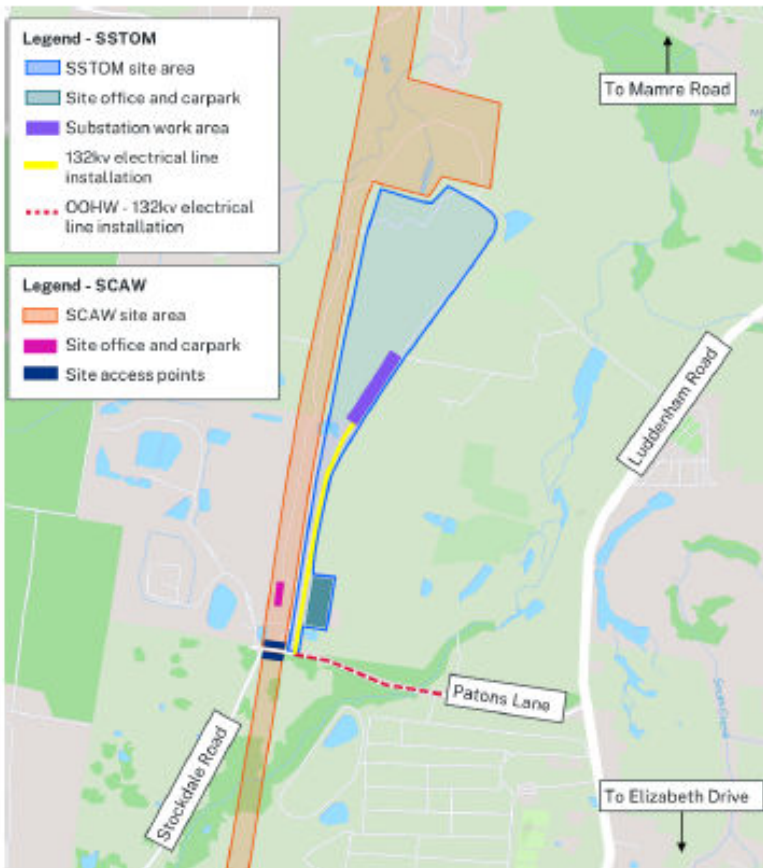
Three monthly out-of-hours lookahead activities:

Activity	Equipment	Work hours	Timing
<b>SSTOM works – Orchard Hills Metro Station site</b>			
<b>Concrete pours and finishing work in station box</b>	Concrete pump, concrete agitator, concrete Vibrator, helicopter, screed, hand drill, non-powered hand tools (including hammers), franna, GenSet, light vehicles	<b>6pm to 12am, 5am – 10pm - Monday to Friday</b>  <b>6am to 6pm, Saturdays</b>	Ongoing - 2025
<b>Works within the station box to support the tunnel and underground station box fit out</b>	Gantry Crane (Electric), telehandler, excavator, front end loader, hand drills	24 hours a day, seven days a week	Ongoing - 2025
<b>Utility investigations on Kent and Caddens Road</b>	Concrete saw, vacuum truck, excavator delivery truck, concrete agitator, handheld wacker packer/rammer	9pm to 5am <b>Tuesday – Wednesday</b>	Tuesday, 1 to Wednesday 3 April 2025
<b>Concrete batching plant operations</b>	Drives and conveyors, front end loader, concrete loading, concrete slumping, concrete truck, light vehicles	<b>5am to 10pm, Monday - Friday.</b>  <b>6am to 6pm Saturday</b>	Ongoing - 2025
<b>Installation, incoming and outgoing deliveries of oversized construction material</b>	OSOM, franna, mobile crane, gantry crane (Electric), telehandler, excavator, front end, loader, hand drills	<b>10pm to 7am</b>	Ongoing - 2025
<b>Oversized plant and equipment activities</b>	OSOM, franna, mobile crane	<b>10pm to 7am</b>	Ongoing - 2025





## Stabling Maintenance Facility work location:



## Contact us:

Please contact the community team on 1800 717 703 or [sydneymetrowsa@transport.nsw.gov.au](mailto:sydneymetrowsa@transport.nsw.gov.au) if you have any questions, complaints or would like to provide feedback about the work. We will continue to keep you updated on the progress of work in your area.

If you would prefer to receive updates by email, please contact us and we will add you to the distribution list.

Thank you for your cooperation while we complete this essential work.



Sydney Metro has launched Sydney Metro Connect – a new way to stay informed.

Access information in over 100 languages Download Sydney Metro Connect from the App store or get it on Google Play.

## For more information contact



24-hour Community Information Line 1800 717 703



[sydneymetrowsa@transport.nsw.gov.au](mailto:sydneymetrowsa@transport.nsw.gov.au)



Sydney Metro - Western Sydney Airport  
PO Box K659, Haymarket NSW 1240



If you need help understanding this information, please contact the Translating and Interpreting Service on 131 450 and ask them to call us on 1800 717 703.

## SPECIFIC NOTIFICATION

Sydney Metro – Western Sydney Airport

# ◇ Notification – out-of-hours work Orchard Hills Metro Station

March 2025

### Upcoming out-of-hours work:

We will be undertaking out-of-hours work (OOHW) at the intersection of Kent Road and Caddens Road, Claremont Meadows. Please see map for work locations. To minimise impact on the local community and road users, this work will be completed outside of normal construction hours.

### Out-of-hours work includes:

- minor excavation work
- locating services
- restoration of the road surface within our work area.

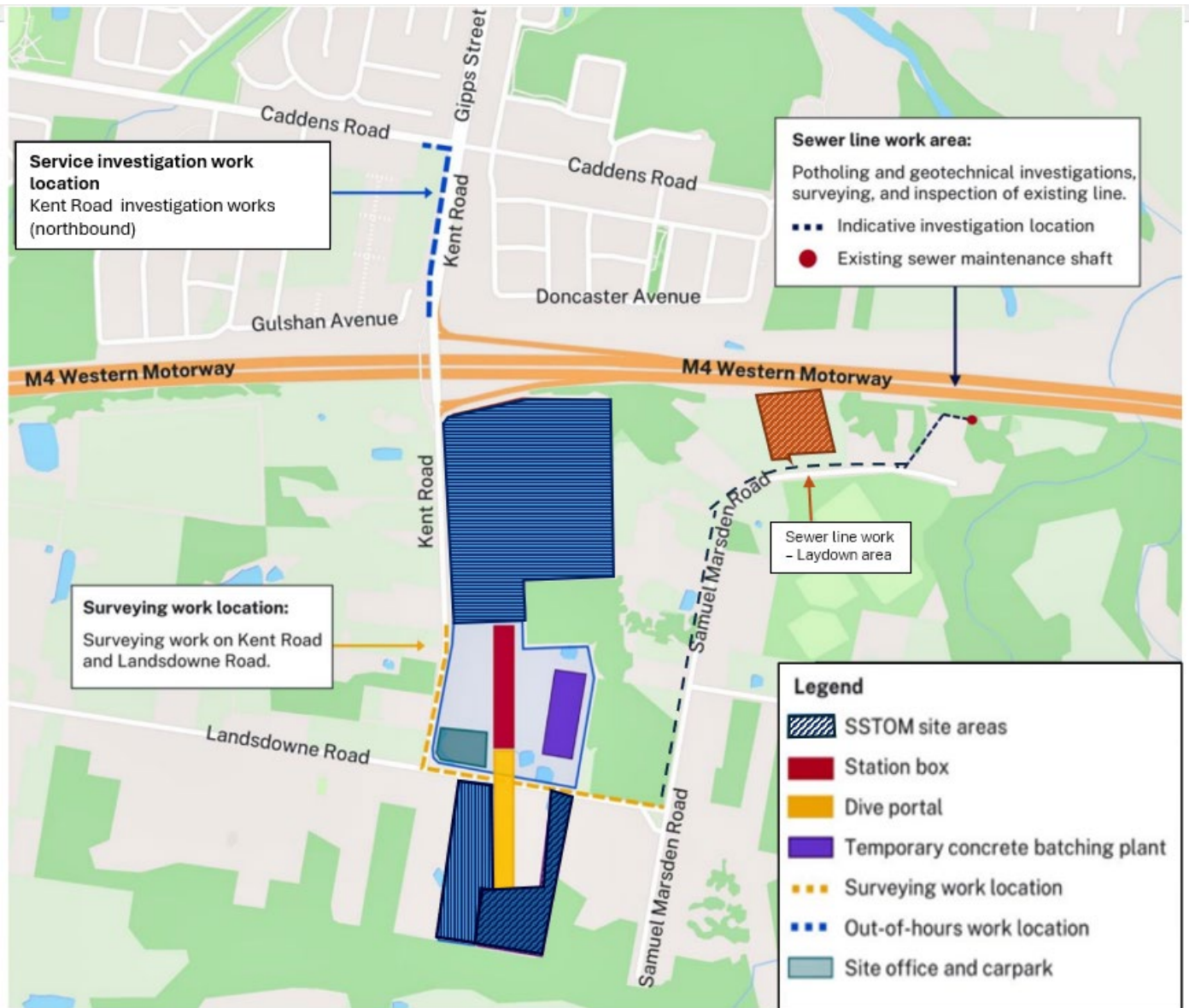
### Work hours:

We will require up to **two shifts** to carry out this work, between **6pm and 7am Tuesday, 1 April and Wednesday 2 April 2025**, with a contingency date of **Thursday, 3 April 2025**. If this work cannot occur on the dates provided due to wet weather, we will notify you of revised dates.

### What to expect:

- work will be noisy at times; we will try to minimise this as much as possible, including completing noisier activities before 10pm and installing noise blankets around the work area
- increase in construction vehicles at the work location
- traffic management
- strict safety and environmental controls will be in place while we carry out the work.





## Appendix C Impacted properties and consultation records

Noise catchment area	Residential address	Affection levels (dB range >NML Night Period)	Consultation Method (x = undertaken)		Consultation Summary
			Specific notification	Monthly construction update Doorknock or Specific Doorknock	
NCA06		10-20dB	X	X	Resident is very happy and has no complaints about the works. He is very excited for the metro.
NCA08		10-20dB	X	X	Written communications letterboxed including contact details and latest information for planned and potential OOHW. No feedback to date.
NCA08		10-20dB	X	X	Property is vacant with a lock on the gate.
NCA08		10-20dB	X	X	Resident has no concerns regarding the works. They can hear some noise, but it does not bother them.
NCA06		10-20dB	X	X	Resident has no concerns regarding the works. They can hear some noise, but it does not bother them.
NCA06		10-20dB	X	X	Resident has no concerns regarding the works. They can hear some noise, but it does not bother them.
NCA06		10-20dB	X	X	Written communications letterboxed including contact details and latest information for planned and potential OOHW. No feedback to date.
NCA06		10-20dB	X	X	Resident has no concerns regarding the works. They can hear some noise, but it does not bother them as the entire Doncaster Street where the properties back onto the highway, have double glazing windows and doors.
NCA06		10-20dB	X	X	Resident has no concerns regarding the works. They can hear some noise, but it does not bother them.
NCA06		10-20dB	X	X	Resident has no concerns regarding the works.
NCA06		10-20dB	X	X	Resident has no concerns regarding the works. She noted occasional noise is audible, but it doesn't bother them.
NCA06		10-20dB	X	X	Resident has no concerns regarding the works.
NCA06		10-20dB	X	X	Written communications letterboxed including contact details and latest information for planned and potential OOHW. No feedback to date.
NCA08		10-20dB	X	X	Written communications letterboxed including contact details and latest information for planned and potential OOHW. No feedback to date. Property is on sale
NCA08		10-20dB	X	X	Written communications letterboxed including contact details and latest information for planned and potential OOHW. No feedback to date.
NCA08		10-20dB	X	X	Written communications letterboxed including contact details and latest information for planned and potential OOHW. No feedback to date.
NCA06		10-20dB	X	X	Written communications letterboxed including contact details and latest information for planned and potential OOHW. No feedback to date.
NCA06		10-20dB	X	X	Written communications letterboxed including contact details and latest information for planned and potential OOHW. No feedback to date.

# Appendix D Conditions of Approval (SSI 10051)

Conditions of Approval relevant to this Consultation Report.

Reference	Description	How is this addressed
<b>E57</b>	<p><b>Out-of-hours work – Community consultation on respite</b></p> <p>In order to undertake out-of-hours work outside the work hours specified under Condition E38, appropriate respite periods for the out-of-hours work must be identified in consultation with the community at each affected location on a regular basis. This consultation must include (but not be limited to) providing the community with:</p>	This document.
	(a) a progressive schedule for periods no less than three (3) months, of likely out-of-hours work;	Section 3. Appendix B
	(b) a description of the potential work, location and duration of the out-of-hours work;	Section 3.1 Appendix B
	(c) the noise characteristics and likely noise levels of the work; and	Section 2.3 Section 3.4 (Figure 3) Appendix B
	(d) likely mitigation and management measures which aim to achieve the relevant NMLs under Condition E43 (including the circumstances of when respite or relocation offers will be available and details about how the affected community can access these offers).	Section 2.2 Section 2.3 Appendix B
	<p>The outcomes of the community consultation, the identified respite periods and the scheduling of the likely out-of-hour work must be provided to the ER, EPA and the Planning Secretary prior to the out-of-hours work commencing.</p> <p><i>Note: Respite periods can be any combination of days or hours where out-of-hours work would not be more than 5 dB(A) above the RBL at any residence.</i></p>	This report.