



EPL 21807 Monitoring Report

September 2025

SSMWSASSM-PLD-1NL-NL000-EV-RPT-000042

Parklife Metro D&C

Approval Record

Revision	Author	Date	Issue	Reviewed by	Approved by
00	[REDACTED]	14/10/2025	Initial Draft	[REDACTED]	[REDACTED]
Signature				[REDACTED]	[REDACTED]

Contents

1	Introduction.....	5
1.1	Background	5
1.1.1	Stations, Systems, Trains, Operations and Maintenance works	5
1.2	Scope of this report	7
2	Reporting requirements	8
3	Monitoring	16
3.1	Weather Monitoring	16
3.2	Noise and Vibration Monitoring.....	16
3.3	Water Monitoring	18
3.3.1	Surface water monitoring.....	18
3.3.2	Discharge to water.....	18
Appendix A	Weather Observations.....	23
Appendix B	Noise Monitoring.....	24
Appendix C	Discharge to water.....	25
Appendix D	Surface water monitoring.....	26
Appendix E	Premise Maps - August	27

Table of Figures

FIGURE 1 OVERVIEW OF SMWSA PROJECT	6
--	---

Table of Tables

TABLE 1 LICENCE DETAILS	7
TABLE 2 EPL 21807 MONITORING REQUIREMENTS	9
TABLE 3 WEATHER SUMMARY AND TRIGGER WEATHER EVENTS FOR REPORTING PERIOD	16
TABLE 4 SUMMARY OF NOISE MONITORING FOR REPORTING PERIOD	17
TABLE 5 MONITORING/DISCHARGE POINTS AND AREAS	19
TABLE 6 MONTHLY WEATHER OBSERVATION TABLE	23
TABLE 7 DETAILED NOISE MONITORING DATA.....	24
TABLE 8 WATER DISCHARGE TABLE	25

1 Introduction

1.1 Background

Sydney Metro is Australia's biggest public transport program comprising four main packages of work including Metro North-West Line, Sydney Metro City and Southwest, Sydney Metro West, and Sydney Metro Western Sydney Airport (SMWSA, the Project). The SMWSA will become the transport spine for Greater Western Sydney, connecting communities and travellers with the new Western Sydney International (Nancy-Bird Walton) Airport (referred to as Western Sydney International) and the growing region.

The Project involves the construction and operation of a new metro railway line around 23km in length that extends from the existing Sydney Trains suburban T1 Western Line at St Marys in the north to the new Bradfield Station in the south at Bringelly. The alignment includes a combination of tunnel, surface, bridges and viaduct sections, and comprises of six new metro stations between St Marys and the Bradfield Core precinct, as well as a stabling and maintenance facility and operational control centre to support the operation of the new metro railway line (see Figure 1).

1.1.1 Stations, Systems, Trains, Operations and Maintenance works

Parklife Metro D&C has been engaged to deliver the Stations, Systems, Trains, Operations and Maintenance (SSTOM) works. The scope of the Stations, Systems, Trains, Operations and Maintenance (SSTOM) package comprises:

- construction of the six new stations
- installation of tracks, signalling, mechanical and electrical systems
- supplying new driverless trains
- construction of stabling and maintenance facility at Orchard Hills
- operation and maintenance of the line and its assets, and
- handback of operations and maintenance at the end of term.



FIGURE 1 OVERVIEW OF SMWSA PROJECT

1.2 Scope of this report

Parklife Metro D&C have been issued an Environment Protection Licence (EPL No. 21807) from the NSW Environment Protection Authority (EPA) for the SMWSA SSTOM Works. The EPL applies to the works approved under the Infrastructure Approval SSI-10051 associated with the delivery of the off-airport portion of the SMWSA SSTOM Works, as detailed in Table 1. This EPL Monitoring Report provides the results of all pollution monitoring required to be measured or monitored by the licensee of EPL 21807 within the reporting period as required by Section 66 of the *Protection of the Environment Operations Act 1997* (POEO Act) and with reference to EPA Publication *Requirements for publishing pollution monitoring data* (Environment Protection Authority, 2013).

TABLE 1 LICENCE DETAILS

Licence Details	
Number	21807
Copy of Licence	Environment & Heritage POEO Licences, Application and Notice Detail (nsw.gov.au)
Anniversary Date	20-July
Licensee	WEBUILD S.P.A
Premises	SYDNEY METRO WESTERN SYDNEY AIRPORT SSTOM PACKAGE FOOTPRINT SYDNEY METRO WESTERN SYDNEY AIRPORT-STATIONS, SYSTEMS, TRAINS, OPERATION & MAINTENANCE PACKAGE
Scheduled Activity	Railway activities – railway infrastructure construction

2 Reporting requirements

Under the POEO Act, holders of environment protection licences (licensees) must publish or make pollution monitoring data available to members of the public.

The POEO Act Section 66 requires:

“Conditions requiring monitoring, certification or provision of information, and related offences

(1) Monitoring The conditions of a licence may require—

(a) monitoring by the holder of the licence of the activity or work authorised, required or controlled by the licence, including with respect to—

(i) the operation or maintenance of premises or plant, and

(ii) discharges from premises, and

(iii) relevant ambient conditions prevailing on or outside premises, and

(iv) anything required by the conditions of the licence, and

(b) the provision and maintenance of appropriate measuring and recording devices for the purposes of that monitoring, and

(c) the analysis, reporting and retention of monitoring data.

(2) False or misleading information A holder of a licence who supplies information, or on whose behalf information is supplied, to the appropriate regulatory authority under the conditions of the licence is guilty of an offence if the information is false or misleading in a material respect.”

The primary objective of the EPL Monitoring Report is that members of the public have access to the results of all pollution monitoring (which a licence specifies must be carried out) in a way that is meaningful to them.

The monitoring data that must be published and/or made available on request is any data that is obtained as a result of a monitoring condition on a licence that relates to air, water (surface or groundwater), noise and/or land pollution. The data to be published or provided is limited to data that relates to pollutants generated, discharged or emitted from the licensed premises.

The data is provided in tabular format that is easy for the general public to understand. Tables definitively display raw data values, while graphs and charts are useful for overviews and visualisation of long-term trends. Raw data will be provided upon request.

This EPL Monitoring Report will provide explanations as to why data may appear to be missing, which may be due to there being no discharge or the level of pollutant being below the detection level of the measurement instrument.

It's possible from time to time that incorrect data may get published in good faith. As soon as practicable after the licensee becomes aware that the published pollution monitoring data is incorrect or misleading, licensees must then publish a correction log to correct this data that is incorrect or misleading.

Table 2 provides a summary of the monitoring requirements of EPL 21807.

TABLE 2 EPL 21807 MONITORING REQUIREMENTS

EPL Condition	Requirement	Report Reference
Weather		
M5.1	<p>The licensee must monitor and record temperature, wind direction, wind velocity and rainfall at either the project weather station, or through analysis of equivalent weather information obtained from the Australian Bureau of Meteorology. Monitoring must:</p> <ul style="list-style-type: none"> a) be representative of the premises; b) commence prior to any works that may cause sediment to leave the premises; and c) continue to be operated until soil disturbance activities cease at the premises and the site has been stabilised. 	Section 3.1 Appendix A
Noise		
L5.9	<p>Works outside of standard construction hours – Regulatory Requirements</p> <p>In undertaking any works and activities outside of standard construction hours under condition L5.8, the licensee must comply with the following:</p> <ul style="list-style-type: none"> a) Prepare a construction noise and vibration impact assessment in accordance with the Interim Construction Noise Guideline (DEC, 2009) that is to include: <ul style="list-style-type: none"> i. a description of the proposed works and activities outside of standard construction hours; ii. predictions of LAeq (15 minute) dB noise levels at noise sensitive receivers from these works and activities, where noise levels are predicted to be greater than those permitted under condition L5.3; and iii. a monitoring plan to validate the noise predictions, based on monitoring at the boundary of representative sensitive receivers during noise generating activities that are representative of the works and activities, including during the period/s predicted to have the highest noise level impacts. b) Undertake noise monitoring in accordance with the monitoring plan required by condition L5.9(a)(iii). 	Section 3.2 Appendix B

L5.10	<p>St Marys Station, Orchard Hills Station and Bradfield Station - Out of Hours Concrete Works Concrete works associated with station box construction at St Marys Station, Orchard Hills Station and Bradfield Station, including concrete pouring, finishing and cleaning, are permitted to be undertaken outside of standard construction hours specified in L5.1 provided that:</p> <p>a) Works are required to achieve compliance with overarching project technical requirements,</p> <p>b) Works had already begun within a reasonable time prior to end of standard construction hours,</p> <p>c) Out of Hours (OOH) works are undertaken from 5am to 7am and 6pm to 12am (midnight), Monday to Friday and 6am to 8am and 1pm to 6pm on Saturday,</p> <p>d) Station box base slab and wall concreting activities and supporting formwork and reinforcement activities are permitted to occur up to 12am (midnight) Monday to Friday a total of 12 times per month until all base slabs and wall pours are completed,</p> <p>e) Station box base slab and wall concreting activities and supporting formwork and reinforcement activities (e.g. using concrete pump, vibrators, concrete trucks, etc) must be completed before 12am (midnight) on Monday to Friday,</p> <p>f) All other concreting activities (e.g. using concrete pump, vibrators, concrete trucks, etc) must be completed before 10pm on Monday to Friday,</p> <p>g) Concrete finishing works (e.g. power floats, hand tools) must be completed before 12am (midnight) on Monday to Friday,</p> <p>h) The licensee is required to undertake noise monitoring in accordance with condition L5.9(b),</p> <p>i) The licensee is required to undertake noise monitoring on a monthly basis at each Station and additionally monitor the first three instances of OOH concrete works at each Station:</p> <ol style="list-style-type: none"> 1. commencing prior to 7am, and 2. extending past 10pm <p>j) The licensee is required to provide the EPA with a Noise Monitoring Report within 30 days of the end of each month,</p> <p>k) Works are permitted to occur until 31 December 2025.</p>	Section 3.2 Appendix B
L5.11	<p>St Marys, Orchard Hills and Bradfield Station sites - Out of Hours Precast Concrete Beam Installation Installation Precast beam installation for station box construction at St Marys, Orchard Hills and Bradfield Station sites is permitted to be undertaken outside of standard construction hours specified in L5.1, provided that:</p> <p>a) Works are required to achieve compliance with project requirements for unloading oversize/overmass precast beam deliveries and site safety requirements,</p> <p>b) Works and activities are undertaken from 12am (midnight) to 7am, Monday to Friday nights,</p> <p>c) The licensee is required to undertake noise monitoring in accordance with condition L5.9(b),</p> <p>d) The licensee is required to undertake noise monitoring at each Station on a monthly basis, and additionally monitor:</p> <ol style="list-style-type: none"> 1. the first two instances of OOH concrete beam installation at each Station, and 2. the first two instances of OOH concrete beam installation at each Station that occurs concurrently with activities permitted under Condition L5.10. <p>e) The licensee is required to provide the EPA with a Noise Monitoring Report within 30 days of the end of each month,</p> <p>f) Works are permitted to occur until 31 May 2026.</p>	Section 3.2 Appendix B

L5.12	<p>Stabling and Maintenance Facility - Out of Hours Concrete Works Concrete works associated with Maintenance & Administration and Operational Control Centre buildings at the Stabling and Maintenance Facility, including concrete pouring, finishing, and cleaning, are permitted to be undertaken outside of standard construction hours specified in L5.1 provided that:</p> <p>a) Works are required to achieve compliance with overarching project technical requirements,</p> <p>b) Works had already begun within a reasonable time prior to end of standard construction hours,</p> <p>c) Out of Hours works (OOH) are undertaken from 5am to 7am and 6pm to 12am (midnight), Monday to Friday, and 6am to 8am, and 1pm - 6pm on Saturday,</p> <p>d) Base slab concreting activities and supporting formwork and reinforcement activities must be completed before 12am (midnight) Monday to Friday,</p> <p>e) Base slab concreting activities and supporting formwork and reinforcement activities are permitted to occur up to 12am (midnight) Monday to Friday a total of 12 times per month until base slabs are completed,</p> <p>f) All other concreting activities (e.g. using concrete pump, vibrators, concrete trucks, etc) must be completed before 10pm on Monday to Friday,</p> <p>g) Concrete finishing works (e.g. power floats, hand tools) must be completed before 12am (midnight) on Monday to Friday,</p> <p>h) The licensee is required to undertake noise monitoring in accordance with L5.9(b),</p> <p>i) The licensee is required to undertake noise monitoring on a monthly basis and additionally during the first three instances of OOH concrete works:</p> <ol style="list-style-type: none"> 1. commencing prior to 7am, and 2. extending past 10pm. <p>j) The licensee is required to provide the EPA with a Noise Monitoring Report within 30 days of the end of each month,</p> <p>k) Works are permitted to occur until 31 December 2025.</p>	Section 3.2 Appendix B
L5.13	<p>Orchard Hills Station site - Out of Hours Concrete Batch Plant Operation The concrete batch plant located at the Orchard Hills site is permitted to operate outside of standard construction hours specified in L5.1 provided that:</p> <p>a) Operation of the plant is required to achieve compliance with overarching project technical requirements of large concrete pours permitted by condition L5.10 and L5.12</p> <p>b) Concrete works had already begun within a reasonable time prior to end of standard construction hours,</p> <p>c) Out of Hours (OOH) works are undertaken from 5am to 7am and 6pm to 10pm Monday to Friday, and 6am to 8am and 1pm to 6pm on Saturday,</p> <p>d) The licensee is required to undertake noise monitoring in accordance with condition L5.9(b),</p> <p>e) The licensee is required to undertake noise monitoring on a monthly basis and additionally monitor the first three instances of OOH operation of the concrete batch plant:</p> <ol style="list-style-type: none"> 1. commencing prior to 7am, and 2. extending past 8pm <p>f) The licensee is required to provide the EPA with a Noise Monitoring Report within 30 days of the end of each month,</p> <p>g) Works are permitted to occur until 31 December 2025.</p>	Section 3.2 Appendix B

L5.14	<p>Works outside standard construction hours - 24-hour works</p> <p>a) The following works are permitted to be undertaken 24 hours a day, 7 days per week for activities at the St Marys Station Site, Claremont Meadows services shaft site, Orchard Hills Station site, Bringelly services shaft site, and Bradfield Station site:</p> <ul style="list-style-type: none"> i. Tunnel and underground station box fit out works and ancillary surface support works ii. Haulage and delivery of materials to the Claremont Meadows services shaft site and Bringelly services shaft site. <p>b) The licensee is required to undertake attended noise monitoring:</p> <ul style="list-style-type: none"> 1. on the first two occasions of 24-hour works at each site: <ul style="list-style-type: none"> i. St Marys Station site, ii. Claremont Meadows services shaft site, iii. Orchard Hills Station site, iv. Bringelly services shaft site, v. Bradfield Station site, and 2. noise monitoring must occur in the night time period. 3. the licensee is required to provide the EPA with a Noise Monitoring Report within 30 days of the end of the month in which noise monitoring was undertaken. 	
M4.4	<p>The licensee must undertake noise and vibration monitoring as directed by an authorised officer of the EPA. Where the monitoring is requested to take place on private land (for example a residential property) the licensee must request permission to access the premises in advance and keep a record of permission requests and responses. If a licensee is unable to obtain permission, the licensee must undertake the monitoring at an indicative location where possible and they must provide the response (including any nil response) to the EPA.</p>	Not triggered
<p>Community Agreements</p> <p>The licensee may work outside standard construction hours (as defined in L5.1) in circumstances other than those permitted under conditions L5.3, L5.4, or any other condition of the licence, subject to the condition outlined Section E1.</p>		
E1.4	<p>A noise validation monitoring plan must be submitted to the EPA for approval as part of the community agreement documentation prior to any OOHW occurring.</p>	Section 3.2 Appendix B
E1.5	<p>Validation monitoring must be undertaken for any OOHW that are the approved under condition E1.1 and must:</p> <ul style="list-style-type: none"> a) be undertaken in accordance with the monitoring plan prepared under condition E1.4; b) be performed by a Competent Person; c) be performed on at least the first 2 occasions (day, evening, nights) where OOHW will be undertaken and are likely to impact Noise Sensitive Receivers; d) be performed on any other occasion (day, evening, night) where the nature of the works is likely to cause greater noise impacts than the first 2 occasions; e) be representative of the impacts in terms of monitoring locations, time and duration of measurements; and f) be recorded and provided to an EPA officer upon request. 	Section 3.2 Appendix B
<p>Water</p>		

P1.1

The following points referred to in the table are identified in this licence for the purposes of the monitoring and/or the setting of limits for discharges of pollutants to water from the point.

Section
3.3.2
Table 5

EPA Identification no	Type of Monitoring Point	Type of Discharge Point	Location Description
1	Discharge and Monitoring	Discharge and Monitoring	The outlet of the sediment basin on the Bradfield site discharging to Thompson Creek referred to in Condition P1.2
2	Discharge and Monitoring	Discharge and Monitoring	The outlet of the water treatment plant on the St Marys site discharging to South Creek
3	Discharge and Monitoring	Discharge and Monitoring	The outlet of the sediment basin on the Orchard Hills site discharging to an Unnamed Creek (tributary of South Creek) referred to in Condition P1.2
4	Discharge and Monitoring	Discharge and Monitoring	The outlet of the water treatment plant on the Bradfield site discharging to Thompson Creek
5	Discharge and Monitoring	Discharge and Monitoring	The outlet of the sediment basin at the Stabling and Maintenance Facility site discharging to Blaxland Creek referred to in Condition P1.2
6	Discharge and Monitoring	Discharge and Monitoring	The outlet of the sediment basin discharging to Cosgroves Creek referred to in Condition P1.2
7	Discharge and Monitoring	Discharge and Monitoring	The outlet of the sediment basin on Orchard Hills site discharging to South Creek referred to in Condition P1.2
8	Discharge and Monitoring	Discharge and Monitoring	The outlet of the sediment basin near Elizabeth Drive discharging to Badgerys Creek referred to in Condition P1.2
9	Discharge and Monitoring	Discharge and Monitoring	The outlet of the sediment basin at the Claremont Meadows site discharging to local stormwater referred to in Condition P1.2.
10	Discharge and Monitoring	Discharge and Monitoring	The outlet of the sediment basin at the Claremont Meadows site discharging to local stormwater referred to in Condition P1.2.
11	Discharge and Monitoring	Discharge and Monitoring	The outlet of the sediment basin discharging to an unnamed tributary of Blaxland Creek referred to in Condition P1.2.
12	Discharge and Monitoring	Discharge and Monitoring	The outlet of the sediment basin on the Stabling and Maintenance Facility site discharging to Blaxland Creek referred to in Condition P1.2
13	Discharge and Monitoring	Discharge and Monitoring	The outlet of the sediment basin located south of Patons Lane discharging to an unnamed tributary of South Creek referred to in Condition P1.2
14	Discharge and Monitoring	Discharge and Monitoring	The outlet of the sediment basin at the Bringelly site discharging to Badgerys Creek referred to in Condition P1.2.
15	Discharge and Monitoring	Discharge and Monitoring	The outlet of the sediment basin near Luddenham Station

			discharging to an unnamed tributary of South Creek referred to in Condition P1.2		
	16	Discharge and Monitoring	Discharge and Monitoring	The outlet of the sediment basin on the Linewide North site discharging to Blaxland Creek referred to in Condition P1.2	
M2.2	Water and/or Land Monitoring Requirements POINT 1, 3, 5, 6, 7, 8, 9, 10, 11, 12, 13, 14, 15, 16			Section 3.3.2 Appendix C	
	Pollutant	Unit of measure	Frequency		Sampling Method
	Oil and Grease	Visible	Special Frequency 1		Visual inspection
	pH	pH	Special Frequency 1		Probe
	Turbidity	nephelometric turbidity units	Special Frequency 1		Probe
	POINT 2				
	Pollutant	Units of measure	Frequency		Sampling Method
	Aluminium	milligrams per litre	Daily during any Grab sample discharge		Grab sample
	Ammonia	milligrams per litre	Daily during any Grab sample discharge		Grab sample
	Chromium (VI) Compounds	milligrams per litre	Daily during any discharge		Grab sample
	Copper	milligrams per litre	Daily during any discharge		Grab sample
	Electrical conductivity	microsiemens per centimetre	Daily during any discharge		Grab sample
	Nitrogen (total)	milligrams per litre	Daily during any discharge	Grab sample discharge	
	Oil and Grease	Visible	Daily during any discharge	Visual Inspection	
	pH	pH	Daily during any discharge	Probe	
	Phosphorus (total)	milligrams per litre	Daily during any discharge	Grab sample	
	TSS	milligrams per litre	Daily during any discharge	Grab sample	
	Zinc	milligrams per litre	Daily during any discharge	Grab sample	
	POINT 4				
	Pollutant	Units of measure	Frequency	Sampling Method	
	Aluminium	milligrams per litre	Monthly during discharge	Grab sample	
	Ammonia	milligrams per litre	Monthly during discharge	Grab sample	
	Chromium (VI) Compounds	milligrams per litre	Monthly during discharge	Grab sample	
	Copper	milligrams per litre	Monthly during discharge	Grab sample	
	Electrical conductivity	microsiemens per centimetre	Monthly during discharge	Grab sample	
	Nitrogen (total)	milligrams per litre	Monthly during discharge	Grab sample	
	Oil and Grease	Visible	Monthly during discharge	Visual Inspection	
	pH	pH	Monthly during discharge	Probe	
	Phosphorus (total)	milligrams per litre	Monthly during discharge	Grab sample	
	TSS	milligrams per litre	Monthly during discharge	Grab sample	
	Zinc	milligrams per litre	Monthly during discharge	Grab sample	

M2.3	<p>For the purposes of Condition M2.2 and the Table thereto, 'Special Frequency 1' means:</p> <p>a) less than 24 hours prior to a controlled discharge and daily for any continued controlled discharge, when it is safe to do so; and</p> <p>b) when rainfall causes a discharge from a sediment basin which has not been emptied within the design management period following cessation of a rainfall event, when it is safe to do so.</p>	Section 3.3.2
E2.1	<p>The licensee must undertake surface water monitoring of receiving waterways at locations upstream, downstream and adjacent to discharge points 2 and 4 identified in Condition P1.1 at fortnightly intervals and at least once during each discharge event. This monitoring must be undertaken for a minimum of 3 months:</p> <p>a) from the date that point 2 was added to the licence; and</p> <p>b) from the date that discharge from point 4 commences.</p> <p>Surface water monitoring results must include:</p> <p>a) quality and quantity of all parameters that are identified in the table in M2.2 for discharge points 2 and 4; and</p> <p>b) results must be submitted to the EPA no more than 2 weeks after each monitoring event has occurred for a minimum of 3 months:</p> <p>i. from the date that point 2 was added to the licence; and</p> <p>ii. from the date that discharge from point 4 commences.</p>	Section 3.3.1
E3.1	<p>Water Treatment Plant (WTP) Performance Reporting</p> <p>A) The licensee must undertake water quality sampling of all discharges from the WTP (as identified as Point 2 and 4 under condition P1.1) and submit to the EPA a WTP Performance Report within 10 business days of each sample result being taken. Sampling must be undertaken:</p> <p>i) daily during discharge</p> <p>ii) as per condition M2.2, following this sampling frequency or as directed by the EPA.</p>	Not Triggered
Additional Monitoring Conditions		
M4.5	<p>The licensee must undertake monitoring, sampling, video recording and/or take photographs:</p> <p>a) if the EPA or licensee reasonably suspects that an event has occurred at the premises or in connection with the carrying out of the activities that has caused, is causing, is likely to cause or has the potential to cause material harm to the environment (whether the harm occurs on or off premises to which the licence applies);</p> <p>b) as soon as practicable; and</p> <p>c) as directed by an authorised officer.</p>	Not triggered

3 Monitoring

This section presents summaries of the monitoring completed in the reporting period from 1 September 2025 to 30 September 2025.

Detailed monitoring results for each program are presented in the Appendices.

3.1 Weather Monitoring

Meteorological observations were captured using the Bureau of Meteorology Weather Stations - Badgerys Creek (Station 067108). Meteorological data for the month of September can be found within Appendix A.

The total rainfall for this reporting period was 68.2 mm with 4 days exceeding 1mm, 2 days exceeding 10mm, and 1 day exceeding 20mm of rain.

During the reporting period, 24 days recorded wind gusts of greater than 25km/hr and 3 days where the maximum wind gust recorded was greater than 50 km/h. There were no days, during the reporting period, where the maximum wind gust recorded was greater than 60 km/hr. Detailed weather observation records for the reporting period are presented in Appendix A.

This information is used daily on site to assess daily activities and consider mitigation measures as required.

TABLE 3 WEATHER SUMMARY AND TRIGGER WEATHER EVENTS FOR REPORTING PERIOD

Weather Event	Observation
Minimum temperature (°C)	3.6
Maximum temperature (°C)	29.9
Total rainfall (mm)	68.2
Number of days with rain (>1mm)	4
Number of days with rain (>10mm)	2
Number of days with rain (>20mm)	1
Number of days with >25km/h wind gust	24
Number of days with >50km/h wind gust	3
Number of days with >60km/h wind gust	0

3.2 Noise and Vibration Monitoring

Noise monitoring is required under Conditions L5.9, L5.10, L5.11, L5.12, L5.13, L5.14 and E1.5 to validate noise predications for work undertaken outside of standard construction hours in accordance with the construction noise and vibration assessment and monitoring plan. All noise monitoring performed under EPL (21807) will be included in Appendix B.

TABLE 4 SUMMARY OF NOISE MONITORING FOR REPORTING PERIOD

Date	Monitoring Location	Attended / Continuous	Description
02/09/2025	40 Lansdowne Road, Orchard Hills	Attended	Residence located on a busy intersection
02/09/2025	654 Luddenham Road, Luddenham	Attended	Residence south of Luddenham Station
02/09/2025	654 Luddenham Road, Luddenham	Attended	Residence south of Luddenham Station
10/09/2025	40 Lansdowne Road, Orchard Hills	Attended	Residence located on a busy intersection
16/09/2025	9 Dolphin Close, Claremont Meadows	Attended	Residence west of Claremont Meadows Service Facility
25/09/2025	40 Lansdowne Road, Orchard Hills	Attended	Residence located on a busy intersection
23/09/2025	145 Badgerys Creek Road, Bradfield	Attended	Residence west of Bradfield Station

3.3 Water Monitoring

3.3.1 Surface water monitoring

As per Condition E2.1 fortnightly sampling is required for at least 3 months from the date Point 2 was added to the licence (30 November 2023). This period ended on 30 February 2024, and additional background monitoring was obtained through March and April. This monitoring is now complete.

Additionally, as per Condition E2.1 surface water monitoring will be conducted at discharge Point 4 at fortnightly intervals and at least once during each discharge event for a minimum of 3 months from the date that discharge from Point 4 commences. These water monitoring results will be presented in Appendix D accordingly.

3.3.2 Discharge to water

The discharge of water from sediment basins occurred at the following discharging monitoring points/locations during this reporting period:

- EPL Discharge Point 1
- EPL Discharge Point 2
- EPL Discharge Point 12
- EPL Discharge Point 13
- EPL Discharge Point 14
- EPL Discharge Point 16

The EPL discharge criteria apply to the sediment basins identified in condition L2.4 of the approved EPL 21807.

Basins and discharge points are summarised in Table 5. All monitoring results for September are included in Appendix C.

TABLE 5 MONITORING/DISCHARGE POINTS AND AREAS

ID	Construction Status	EPA ID	Easting	Northing	Description of location of discharge point	Catchment name	Name of nearest waters	Direct discharge to waters	Date added to EPL
SSTOM-001	Active	1	290807.84	6243844.20	The outlet of the sediment basin on the Bradfield site discharging to Thompson Creek	South Creek	Thompsons Creek	Yes	14/11/2023
SSTOM-002	Active	2	294041.62	6261905.98	The outlet of the water treatment plant on the St Marys site at former Plaza	South Creek	South Creek	No	15/12/2023
SSTOM-003	Not active	3	291819.86	6258565.85	The outlet of the sediment basin on the Orchard Hills site discharging to an Unnamed Creek (tributary of South Creek)	South Creek	Blaxland Creek	No	14/02/2024
SSTOM-004	Not active	4	291447.72	6243909.96	The outlet of the water treatment plant on the Bradfield site discharging to Thompson Creek	South Creek	Thompsons Creek	No	15/05/2024
SSTOM-005	Not active	5	292112.47	6257621.18	The outlet of the sediment basin at the Stabling and Maintenance Facility site discharging to Blaxland Creek	South Creek	Blaxland Creek	No	28/08/2024
SSTOM-006	Not active	6	291092.66	6252180.95	The outlet of the sediment basin discharging to Cosgroves Creek	South Creek	Cosgrove Creek	No	04/09/2024
SSTOM-007	Not active	7	292065.7	6259303.9	The outlet of the sediment basin discharging to South Creek	South Creek	South Creek	No	15/11/2024
SSTOM-008	Not active	8	291981.6	6249912.7	The outlet of the sediment basin discharging to Badgerys Creek	Badgerys Creek	Badgerys Creek	No	4/12/2024
SSTOM-009	Not active	9	291981.6	6249912.7	The outlet of the sediment basin discharging to Claremont Creek	South Creek	Claremont Creek	No	16/01/2025
SSTOM-010	Not active	10	292018.2	6261255.3	The outlet of the sediment basin discharging to Claremont Creek	South Creek	Claremont Creek	No	16/01/2025

SSTOM-011	Not active	11	291965.4	6258444.4	The outlet of the sediment basin discharging to Badgerys Creek	South Creek	Badgerys Creek	No	16/01/2025
SSTOM-012	Not Active	12	291985.4	6257951.5	The outlet of the sediment basin discharging to Blaxland Creek	South Creek	Blaxland Creek	Yes	16/01/2025
SSTOM-013	Active	13	291528.1	6255484.1	The outlet of the sediment basin located south of Patons Lane to Unnamed Creek	South Creek	Unnamed Creek	No	23/01/2025
SSTOM-014	Active	14	289482.8	6245852.0	The outlet of the sediment basin at the Bringelly site discharging to Badgerys Creek.	South Creek	Badgerys Creek	Yes	23/01/2025
SSTOM-015	Not active	15	290913.5	6253487.3	The outlet of the sediment basin near Luddenham Station discharging to an unnamed tributary of South Creek	South Creek	South Creek	No	25/03/2025
SSTOM-016	Active	16	291749.9	6257486.0	The outlet of the sediment basin near Linewide (South Lansdown Road) Station discharging to Blaxland Creek	South Creek	Blaxland Creek	No	4/06/2025

Appendices

Appendix A Weather Observations

TABLE 6 MONTHLY WEATHER OBSERVATION TABLE

Date	Temperature		Rainfall	Wind Observations			Morning (9am) Weather Observation					Afternoon (3pm) Weather Observation				
	Minimum (°C)	Maximum (°C)	In the 24 hours to 9am (mm)	Direction of maximum wind gust	Speed of maximum wind gust (km/h)	Time of maximum wind gust	Temperature (°C)	9am relative humidity (%)	Wind direction	Wind speed (km/h)	9am MSL pressure (hPa)	Temperature (°C)	9am relative humidity (%)	Wind direction	Wind speed (km/h)	3pm MSL pressure (hPa)
1	3.7	20.3	0	ESE	24	16:24	12.5	62	WSW	9	1024.6	19.8	33	SE	7	1020.4
2	7.6	21.7	0	NNE	28	13:05	15	76	WSW	4	1024.7	21	43	NNE	11	1019.6
3	4.2	22.3	0	ENE	22	13:18	12.8	74	NNE	9	1022.4	21.6	34	N	9	1018
4	7.8	24.4	0	NW	43	13:00	10.8	74	N	9	1019.6	23.7	25	WNW	26	1015.7
5	6.3	20.5	0	SE	30	15:51	15.1	57	SSW	17	1027.5	17.1	51	ESE	15	1026.9
6	8.7	21.8	0	NNE	30	11:10	12.6	73	S	2	1032.2	20.9	42	NNE	13	1026.7
7	6.7	26.2	0	NE	28	15:46	14.7	81	NE	2	1026	25.5	35	NNE	17	1019.6
8	10.8	29.5	0	NW	50	14:01	17.8	58	NNE	9	1018.4	28.3	34	NNW	24	1012.9
9	13.9	27	2.6	W	41	03:33	17.5	86	NNE	4	1015.7	22.7	52	N	11	1010.3
10	13.2	18.1	11.2	S	39	15:13	14.5	99	SSE	4	1009.7	14	99	WSW	26	1004.6
11	9.4	18.4	48.8	WSW	50	04:47	12.4	79	SW	19	1009.4	16.8	49	SSW	17	1013.7
12	6.1	21.1	0.2	ESE	22	17:05	16.8	51	SW	7	1023.2	20.4	38	ESE	9	1020.4
13	6.3	23.1	0	NE	24	11:25	17.6	60	ESE	6	1026.8	20.9	40	ESE	4	1023.2
14	6.4	24.2	0	NNE	20	12:06	15.5	76	ENE	4	1025.5	23.3	38	NNE	7	1019.2
15	4.8	27.2	0	WNW	37	15:58	20.6	46	NNE	11	1020.1	26.9	26	WNW	19	1015.9
16	12.2	28.7	0	SW	46	22:30	20.9	53	NNE	15	1015.7	27	34	NW	17	1010.1
17	15.1	25.6	0	SW	37	22:58	16.1	74	SSW	13	1014.9	25	27	WNW	11	1013.5
18	5.7	21.7	0	E	22	14:43	13.2	51	SW	6	1025.2	21.2	31	ENE	11	1021
19	6.3	25	0	NW	31	15:23	15.6	68	N	7	1020.5	23.1	40	N	9	1014.1
20	13.4	22.4	0.4	W	54	11:58	19.9	41	W	22	1007.7	21.1	31	WSW	24	1008.7
21	4	22.5	0.2	WSW	37	18:28	16	44	NNW	9	1017.5	21.7	36	NNE	9	1013.3
22	6.2	22	0	SSW	46	19:50	18.4	51	N	4	1018.3	21.4	34	S	15	1017
23	4.3	19.4	3.8	SW	37	09:37	14.8	44	WSW	15	1026.7	18.8	36	S	13	1023.6
24	3.6	25.6	0.2	SW	50	15:25	15.1	62	WNW	9	1018.8	25.1	26	SSW	13	1014.7
25	6.1	25.9	0	WSW	54	14:15	15.6	62	N	11	1016.7	24.4	21	WSW	28	1012.3
26	8	29	0	WNW	52	13:26	22.7	38	N	20	1013.1	27.2	24	WNW	28	1010.2
27	12	29.9	0	NW	37	15:42	23.6	36	N	13	1014.1	25.5	34	NNE	22	1011.6
28	9.8	25.3	0	SE	30	14:14	23.8	55	ENE	13	1013.7	21.6	61	ESE	17	1012.1
29	14.6	24.5	0.6	SE	26	16:21	18.6	65	SSW	9	1019.7	23.8	44	ESE	7	1014.7
30	10.1	28.6	0.2	NNE	31	11:30	13.4	99		Calm	1014.6	28.1	42	NNE	15	1006.1

Appendix B Noise Monitoring

TABLE 7 DETAILED NOISE MONITORING DATA

Date	Time	Construction Activity	Activity Location	Monitoring Location	NML (dBA)	Predicted (dBA)	Recorded LA _{eq(15min)} (dBA)	L _{Amax}	L _{A10}	L _{A90}	Exceedance of Predicted (dBA)	Exceedance of Predicted	Comments
02/09/2025	21:00	Steel Fixing	Orchard Hills Station	40 Lansdowne Road, Orchard Hills	45	53	47.4	67.1	49.3	38.4	-5.6	No	Dominant noise source was from passing traffic (light vehicles and motorcycles) and planes passing through the area. PLM works faintly audible during breaks in traffic but was below the predicted DNVIS levels.
02/09/2025	21:38	Rail Alignment	Luddenham Station	654 Luddenham Road, Luddenham	35	35	57.8	81.5	55.5	41.3	22.8	No	Dominant noise source was from continuous traffic passing through Luddenham Road. PLM works inaudible
02/09/2025	22:00	Rail Alignment	Luddenham Station	654 Luddenham Road, Luddenham	35	35	57.4	84.6	53.8	42.1	22.4	No	Dominant noise source was from continuous traffic passing through Luddenham Road. PLM works inaudible
10/09/2025	02:20	Pre-cast Install	Orchard Hills Station	40 Lansdowne Road, Orchard Hills	46	46	41.7	83.7	67.8	28.5	-4.3	No	Dominant noise source was from occasional traffic passing through Kent Road and Lansdowne Road. PLM works inaudible
16/09/2025	22:24	Ventilation fans	Claremont Meadows Service Facility	9 Dolphin Close, Claremont Meadows	36	40	60.5	74.7	65.4	45.2	4	No	Noise was from the surrounding traffic at Gipps Street. PLM works inaudible.
23/09/2025	19:14	Concrete Pour	Bradfield Station	145 Badgerys Creek Road, Bradfield	40	47	44.9	59	45.9	43.7	-2.1	No	Dominant noise source was concrete pump. Noise monitoring complaint with Predicted DNVIS noise levels.
25/09/2025	06:33	Boral batch plant	Orchard Hills Station	40 Lansdowne Road, Orchard Hills	45	<45	56.6	78	57.9	44.4	11.6	No	Dominant noise source was from passing traffic at Lansdowne Road. PLM compliant with DNVIS predictions.

Appendix C Discharge to water

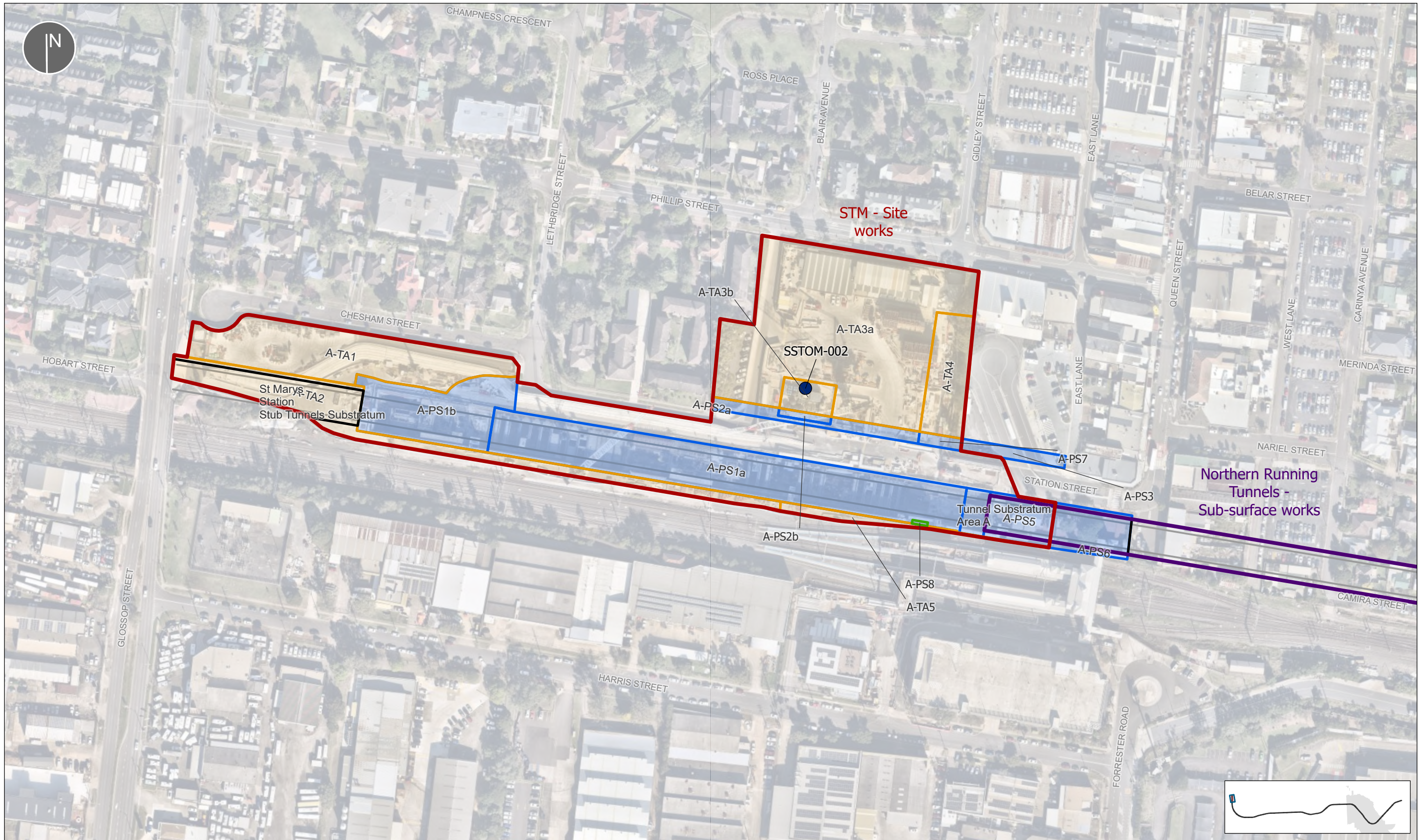
TABLE 8 WATER DISCHARGE TABLE

Discharge Monitoring Point ID	Type of Monitoring Point	Type of Discharge Point	Date	Discharge Permit No.	Oil and Grease (Visual inspection)	pH (6.5 - 8.5)	Turbidity (50 NTU)
SSTOM-001	Sediment basin	Discharge into stabilised spillway	01/09/2025	114	None	8.01	38.3
SSTOM-016	Sediment basin	Discharge into stabilised spillway	01/09/2025	115	None	8.29	23.9
SSTOM-013	Sediment basin	Discharge into stabilised spillway	01/09/2025	116	None	8.3	30.4
SSTOM-016	Sediment basin	Discharge into stabilised spillway	12/09/2025	117	None	7.08	33.4
SSTOM-001	Sediment basin	Discharge into stabilised spillway	12/09/2025	119	None	7.85	37.7
SSTOM-001	Sediment basin	Discharge into stabilised spillway	25/09/2025	121	None	7.95	27.2
SSTOM-001	Sediment basin	Discharge into stabilised spillway	29/09/2025	122	None	8.37	3.6
SSTOM-014	Sediment basin	Discharge into stabilised spillway	29/09/2025	123	None	8.34	11.9

Appendix D Surface water monitoring

No surface water monitoring was conducted for this month's monitoring report. Any surface water monitoring conducted as part of Parklife Metro's EPL licence will be presented accordingly.

Appendix E Premise Maps - September



LEGEND		Site Access Schedule	
Discharge Points	EPL Premise Boundary	Metro alignment	Temporary Area
Water Treatment Plant	Surface works	Watercourse	
	Sub-surface works	Western Sydney International boundary (WSP)	Aerial Stratum
			Project Site
			Substratum

TITLE
EPL 21807 PREMISE BOUNDARY

NOTES	
EPL Premise Boundary Map	

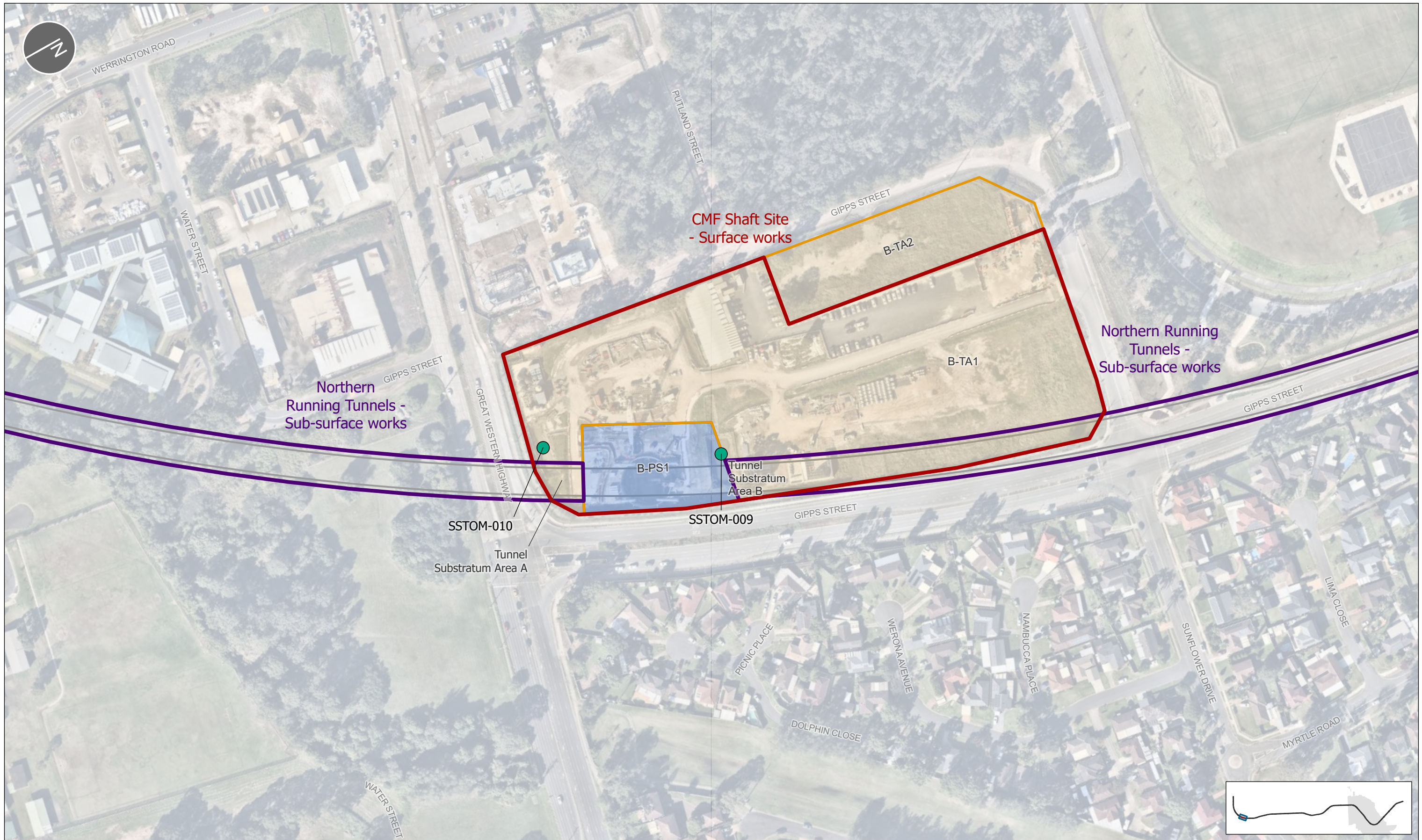
PROJECT	CLIENT
Sydney Metro – Western Sydney Airport - SSTM	Sydney Metro

SCALE	MAP #	DATE
1:2,000	A3	09/09/2025

SHEET	COORDINATE SYSTEM	DATE
1 of 12	GDA2020 MGA Zone 56	09/09/2025

REV	DATE	DESCRIPTION
37	20.05.2025	Premise Map update
38	05.06.2025	Premise Map update
39	05.07.2025	Premise Map update
40	07.07.2025	Premise Map update
41	25.08.2025	Premise Map update
42	09.09.2025	Premise Map update

TITLE	MAP #	DATE
EPL 21807 PREMISE BOUNDARY	SMWSASSM-PLD-1NL-ENV-GIS-000001_42	09/09/2025



LEGEND			
Discharge Points	EPL Premise Boundary	Metro alignment	Site Access Schedule
Temporary Sediment Basin	Surface works	Watercourse	Project Site
	Sub-surface works	Western Sydney International boundary (WSP)	Substratum
			Temporary Area

TITLE
EPL 21807 PREMISE BOUNDARY

PROJECT
Sydney Metro – Western Sydney Airport - SSTOM

SCALE
1:2,000

SHEET
3 of 12

COORDINATE SYSTEM
GDA2020 MGA Zone 56

0 40 80m

NOTES
EPL Premise Boundary Map

REV	DATE	DESCRIPTION
37	20.05.2025	Premise Map update
38	05.06.2025	Premise Map update
39	05.07.2025	Premise Map update
40	07.07.2025	Premise Map update
41	25.08.2025	Premise Map update
42	09.09.2025	Premise Map update

CLIENT
Sydney Metro

MAP #
SMWSASSM-PLD-1NL-ENV-GIS-000001_42

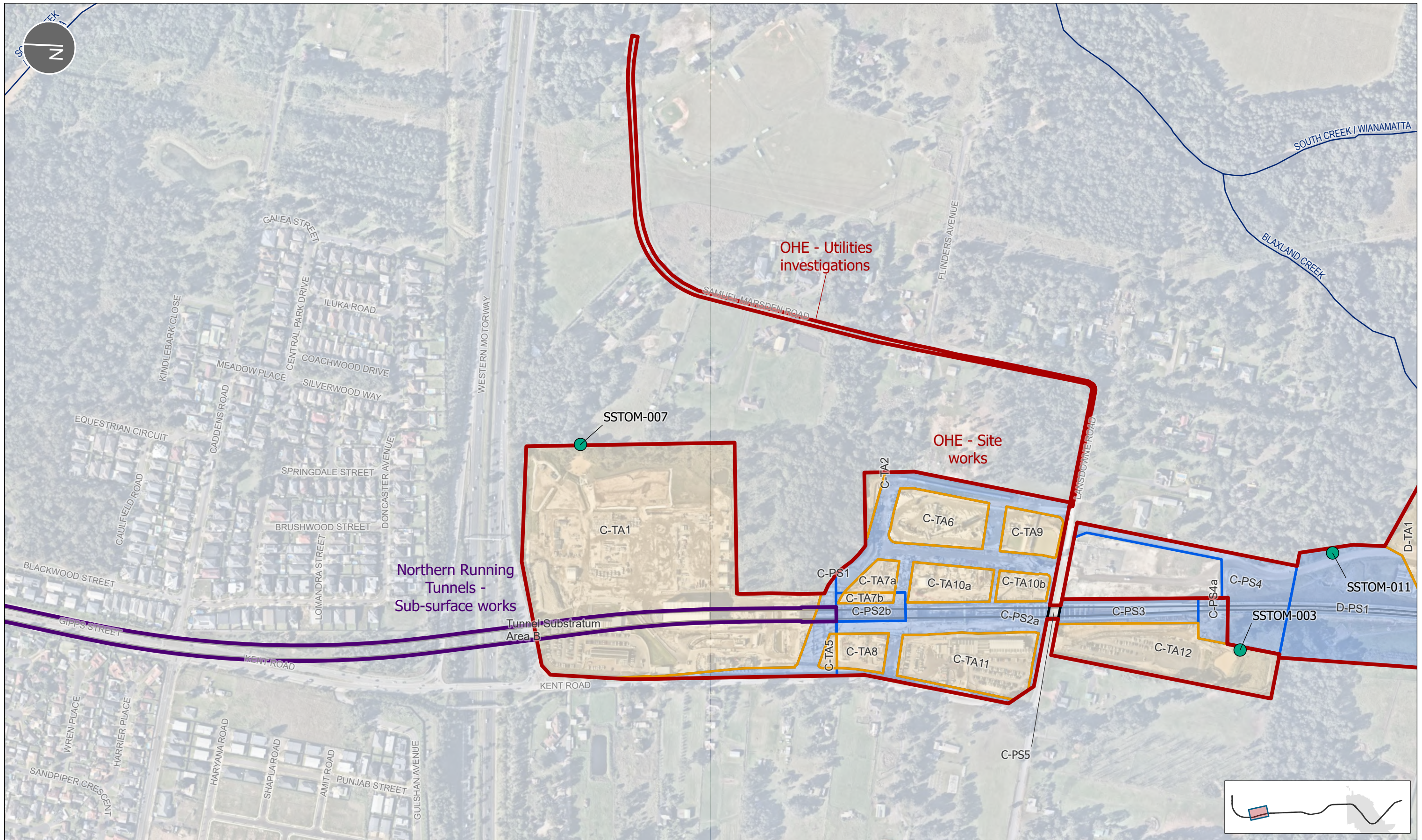
DATE
09/09/2025

REV	DATE	DESCRIPTION
37	20.05.2025	Premise Map update
38	05.06.2025	Premise Map update
39	05.07.2025	Premise Map update
40	07.07.2025	Premise Map update
41	25.08.2025	Premise Map update
42	09.09.2025	Premise Map update

MAP #
SMWSASSM-PLD-1NL-ENV-GIS-000001_42

DATE
09/09/2025

42

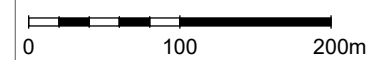


LEGEND

- | | | | |
|---|---|---|---|
| <p>Discharge Points</p> <ul style="list-style-type: none"> ● Temporary Sediment Basin | <p>EPL Premise Boundary</p> <ul style="list-style-type: none"> ▭ Surface works ▭ Sub-surface works | <p>Metro alignment</p> <ul style="list-style-type: none"> — Metro alignment — Watercourse ▭ Western Sydney International boundary (WSP) | <p>Site Access Schedule</p> <ul style="list-style-type: none"> ▭ Project Site ▭ Substratum ▭ Temporary Area |
|---|---|---|---|



TITLE
EPL 21807 PREMISE BOUNDARY



NOTES

EPL Premise Boundary Map

PROJECT
Sydney Metro – Western Sydney Airport - SSTM

SCALE
1:5,000

SHEET
4 of 12

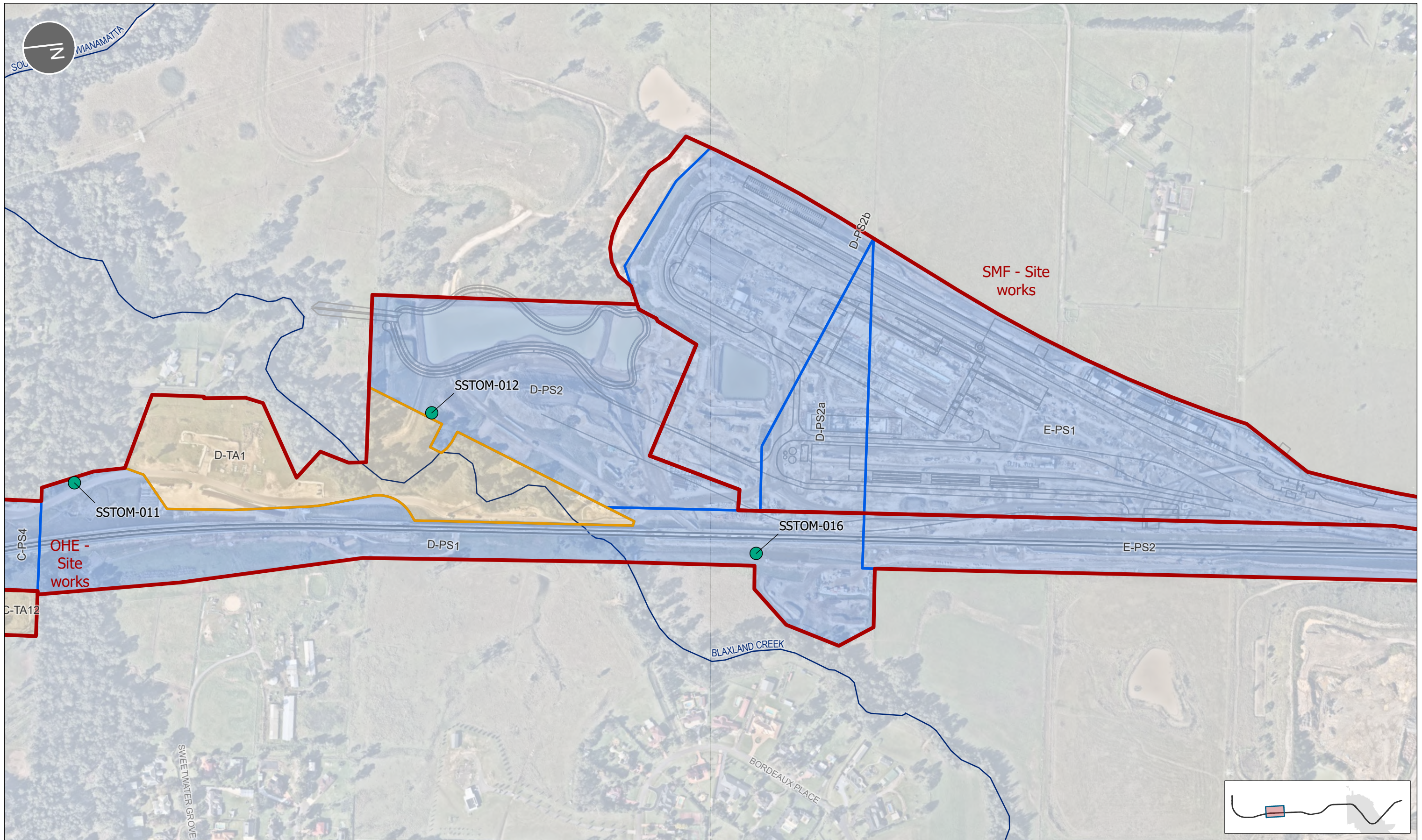
COORDINATE SYSTEM
GDA2020 MGA Zone 56

REV	DATE	DESCRIPTION
37	20.05.2025	Premise Map update
38	05.06.2025	Premise Map update
39	05.07.2025	Premise Map update
40	07.07.2025	Premise Map update
41	25.08.2025	Premise Map update
42	09.09.2025	Premise Map update

CLIENT
Sydney Metro

MAP #
SMWSASSM-PLD-1NL-ENV-GIS-000001_42

REV
42



LEGEND			
Discharge Points	EPL Premise Boundary	Metro alignment	Site Access Schedule
● Temporary Sediment Basin	▭ Surface works	— Watercourse	▭ Project Site
	▭ Sub-surface works	— Western Sydney International boundary (WSP)	▭ Temporary Area



TITLE
EPL 21807 PREMISE BOUNDARY

SCALE
1:5,000

DATE
5 of 12

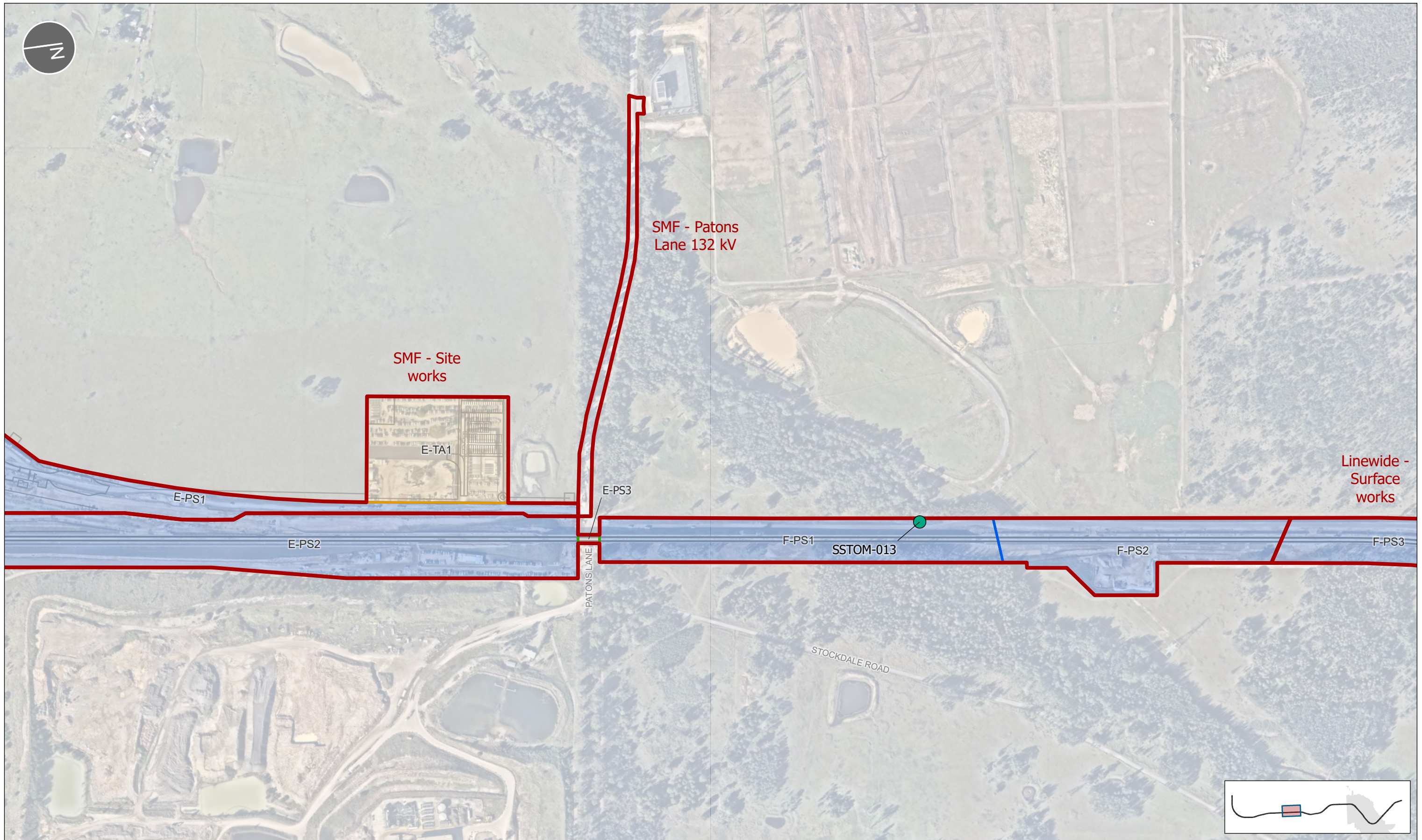
COORDINATE SYSTEM
GDA2020 MGA Zone 56

NOTES		
EPL Premise Boundary Map		

PROJECT	CLIENT
Sydney Metro – Western Sydney Airport - SSTM	Sydney Metro

REV	DATE	DESCRIPTION
37	20.05.2025	Premise Map update
38	05.06.2025	Premise Map update
39	05.07.2025	Premise Map update
40	07.07.2025	Premise Map update
41	25.08.2025	Premise Map update
42	09.09.2025	Premise Map update

MAP #	REV
SMWSASSM-PLD-1NL-ENV-GIS-000001_42	42



LEGEND			
Discharge Points	EPL Premise Boundary	Metro alignment	Site Access Schedule
● Temporary Sediment Basin	▭ Surface works	— Watercourse	▭ Aerial Stratum
	▭ Sub-surface works	▭ Western Sydney International boundary (WSP)	▭ Project Site
			▭ Temporary Area

Parklife Metro D&C

NOTES
EPL Premise Boundary Map

REV	DATE	DESCRIPTION
37	20.05.2025	Premise Map update
38	05.06.2025	Premise Map update
39	05.07.2025	Premise Map update
40	07.07.2025	Premise Map update
41	25.08.2025	Premise Map update
42	09.09.2025	Premise Map update

TITLE
EPL 21807 PREMISE BOUNDARY

PROJECT
Sydney Metro – Western Sydney Airport - SSTM

SCALE
1:5,000

SHEET
6 of 12

CLIENT
Sydney Metro

MAP #
SMWSASSM-PLD-1NL-ENV-GIS-000001_42

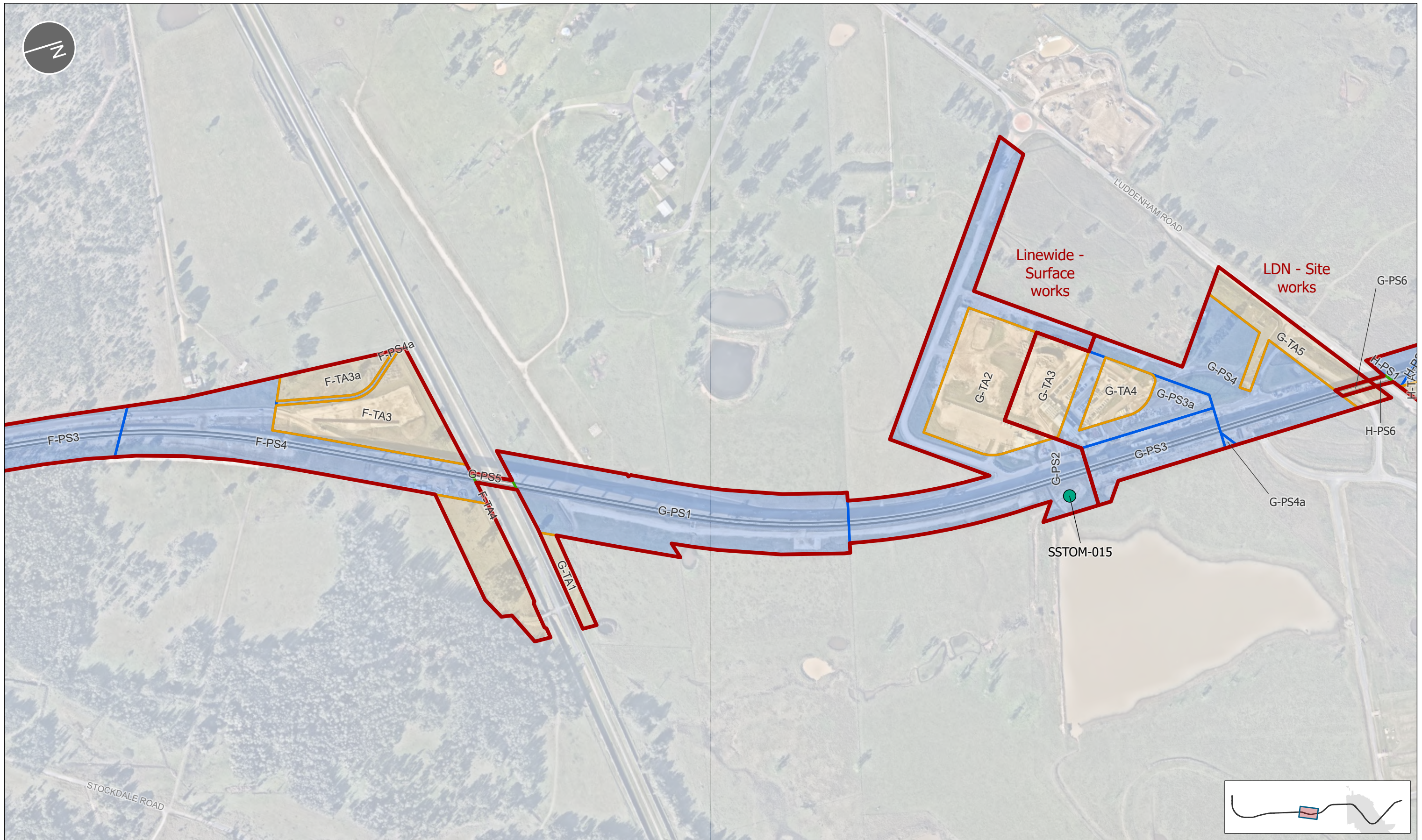
DATE
09/09/2025

COORDINATE SYSTEM
GDA2020 MGA Zone 56

SCALE BAR
0 100 200m

42

GIS MAP file : SSTM_ENV_EPL | C:\Live_Projects\sstom_gis\current\maps\Environment\SSTM_ENV_EPL.aprx



LEGEND			
Discharge Points	EPL Premise Boundary	Metro alignment	Site Access Schedule
Temporary Sediment Basin	Surface works	Watercourse	Aerial Stratum
	Sub-surface works	Western Sydney International boundary (WSP)	Project Site
			Temporary Area

Parklife Metro D&C

NOTES

EPL Premise Boundary Map

REV	DATE	DESCRIPTION
37	20.05.2025	Premise Map update
38	05.06.2025	Premise Map update
39	05.07.2025	Premise Map update
40	07.07.2025	Premise Map update
41	25.08.2025	Premise Map update
42	09.09.2025	Premise Map update

TITLE
EPL 21807 PREMISE BOUNDARY

PROJECT
Sydney Metro – Western Sydney Airport - SSTOM

SCALE
1:5,000

SHEET
7 of 12

CLIENT
Sydney Metro

MAP #
SMWSASSM-PLD-1NL-ENV-GIS-000001_42

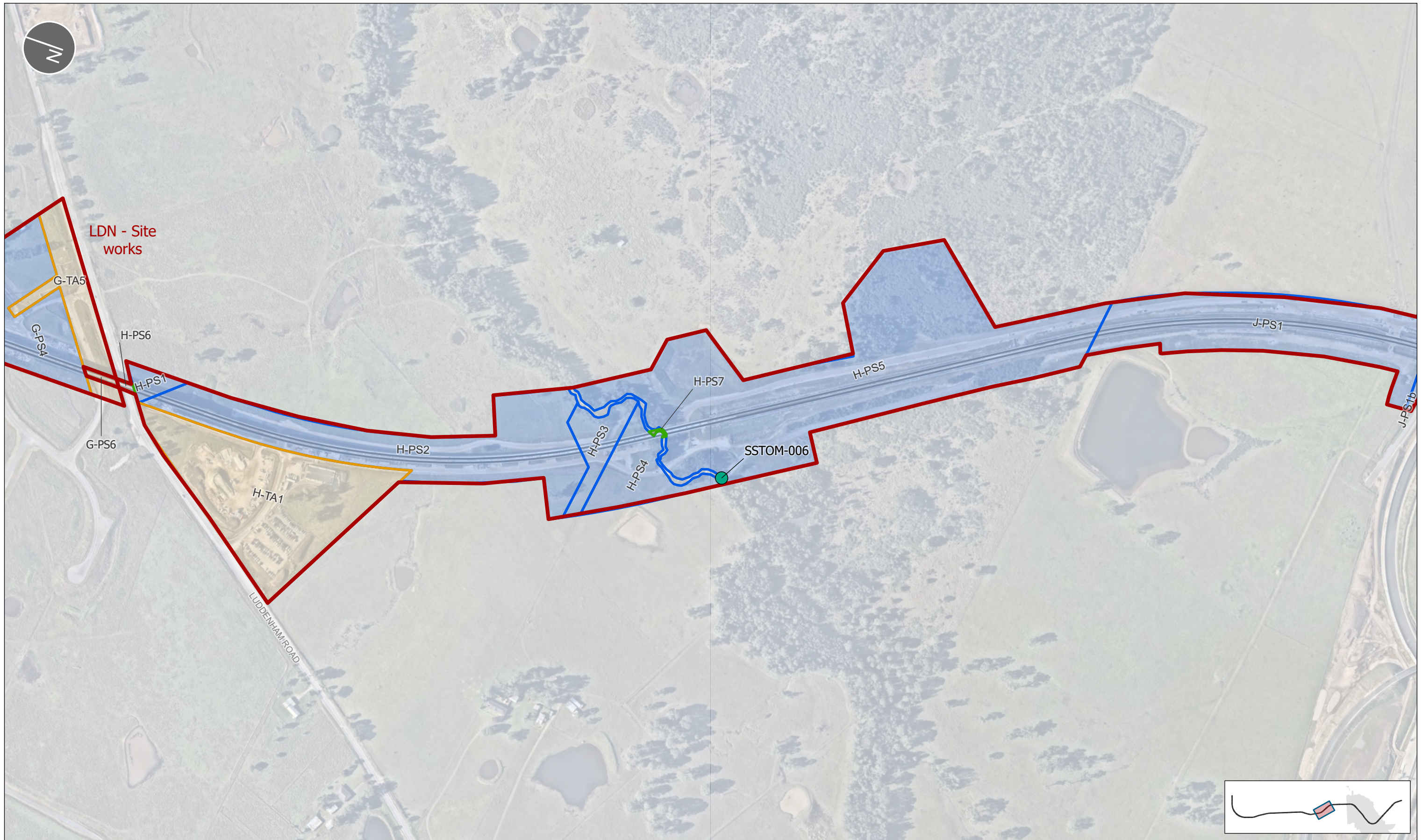
DATE
09/09/2025

COORDINATE SYSTEM
GDA2020 MGA Zone 56

DATE
09/09/2025

42

GIS MAP file : SSTOM_ENV_EPL | C:\Live_Projects\sstom_gis\current\maps\Environment\SSTOM_ENV_EPL.aprx

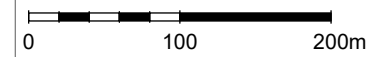


LEGEND

- | | | | |
|----------------------------|-----------------------------|---|-----------------------------|
| Discharge Points | EPL Premise Boundary | Metro alignment | Site Access Schedule |
| ● Temporary Sediment Basin | ▭ Surface works | — Watercourse | ▭ Aerial Stratum |
| | ▭ Sub-surface works | ▭ Western Sydney International boundary (WSP) | ▭ Project Site |
| | | | ▭ Temporary Area |



TITLE
EPL 21807 PREMISE BOUNDARY



NOTES

EPL Premise Boundary Map

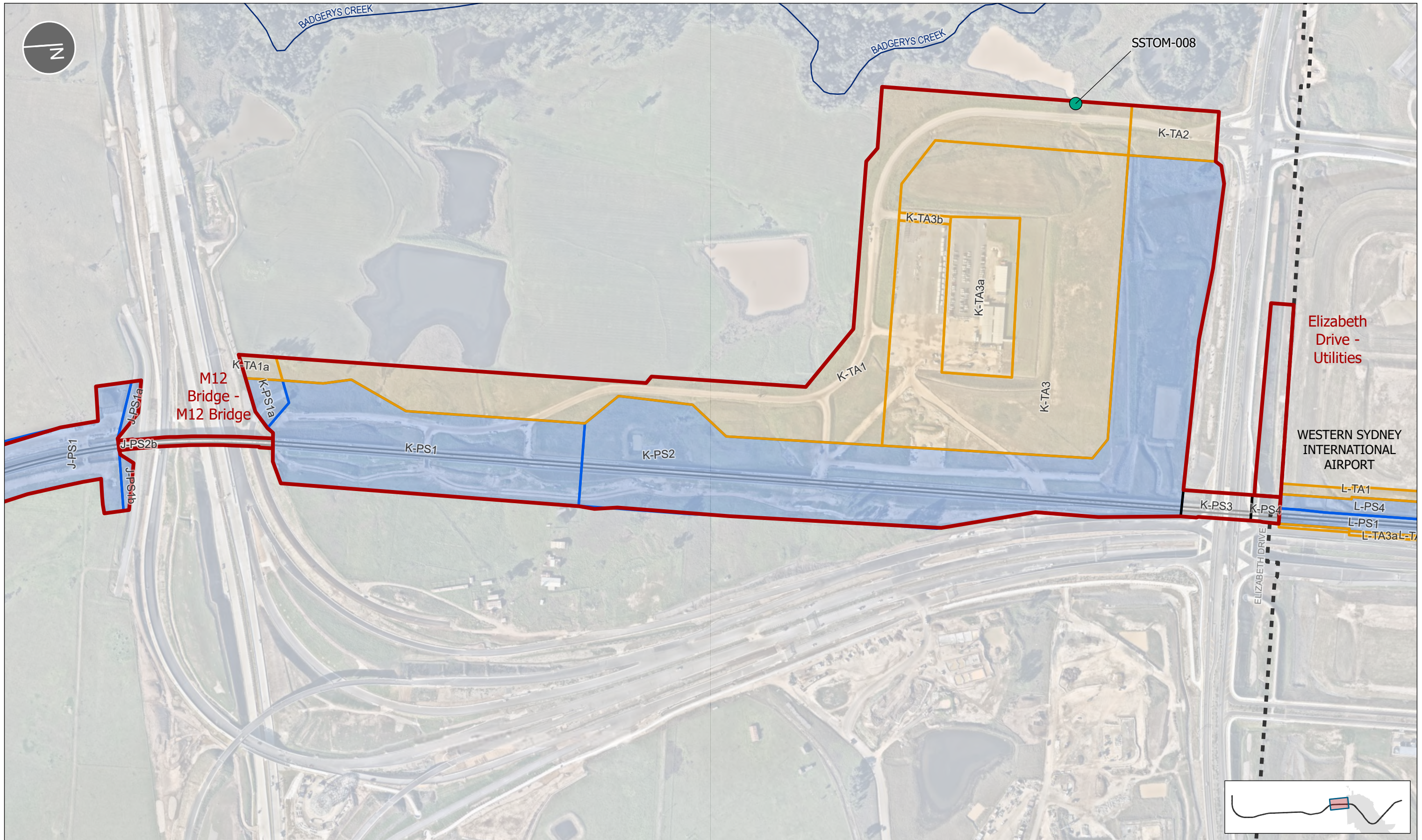
PROJECT
Sydney Metro – Western Sydney Airport - SSTM

SCALE 1:5,000
DATE 8 of 12
COORDINATE SYSTEM GDA2020 MGA Zone 56

REV	DATE	DESCRIPTION
37	20.05.2025	Premise Map update
38	05.06.2025	Premise Map update
39	05.07.2025	Premise Map update
40	07.07.2025	Premise Map update
41	25.08.2025	Premise Map update
42	09.09.2025	Premise Map update

CLIENT
Sydney Metro

MAP # SMWSASSM-PLD-1NL-ENV-GIS-000001_42
REV 42



LEGEND				
Discharge Points	EPL Premise Boundary	Metro alignment	Site Access Schedule	Temporary Area
Temporary Sediment Basin	Surface works	Watercourse	Aerial Stratum	
	Sub-surface works	Western Sydney International boundary (WSP)	Project Site	
			Substratum	



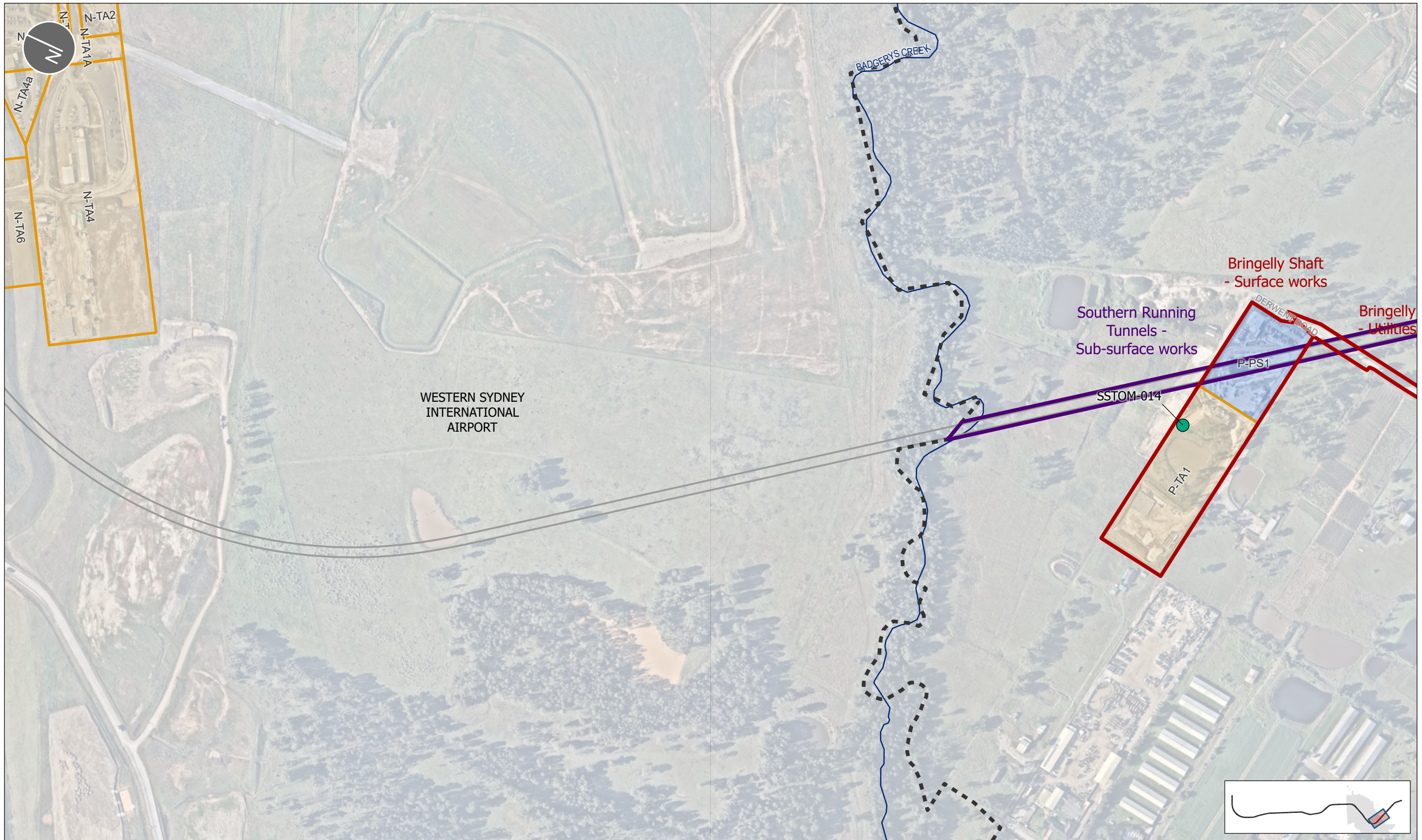
NOTES		
EPL Premise Boundary Map		

REV	DATE	DESCRIPTION
37	20.05.2025	Premise Map update
38	05.06.2025	Premise Map update
39	05.07.2025	Premise Map update
40	07.07.2025	Premise Map update
41	25.08.2025	Premise Map update
42	09.09.2025	Premise Map update

TITLE	EPL 21807 PREMISE BOUNDARY
PROJECT	Sydney Metro – Western Sydney Airport - SSTOM
SCALE	1:5,000
SHEET	9 of 12
COORDINATE SYSTEM	GDA2020 MGA Zone 56

CLIENT	Sydney Metro
SCALE	A3
DATE	09/09/2025

MAP #	SMWSASSM-PLD-1NL-ENV-GIS-000001_42
REV	42



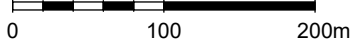
LEGEND			
Discharge Points	EPL Premise Boundary	Metro alignment	Site Access Schedule
Temporary Sediment Basin	Surface works	Watercourse	Project Site
	Sub-surface works	Western Sydney International boundary (WSP)	Temporary Area



NOTES		
EPL Premise Boundary Map		

REV	DATE	DESCRIPTION
37	20.05.2025	Premise Map update
38	05.06.2025	Premise Map update
39	05.07.2025	Premise Map update
40	07.07.2025	Premise Map update
41	25.08.2025	Premise Map update
42	09.09.2025	Premise Map update

TITLE EPL 21807 PREMISE BOUNDARY	PROJECT Sydney Metro – Western Sydney Airport - SSTOM	CLIENT Sydney Metro
SCALE 1:5,000	A3	MAP # SMWSASSM-PLD-1NL- ENV-GIS-000001_42
SHEET 10 of 12	COORDINATE SYSTEM GDA2020 MGA Zone 56	DATE 09/09/2025





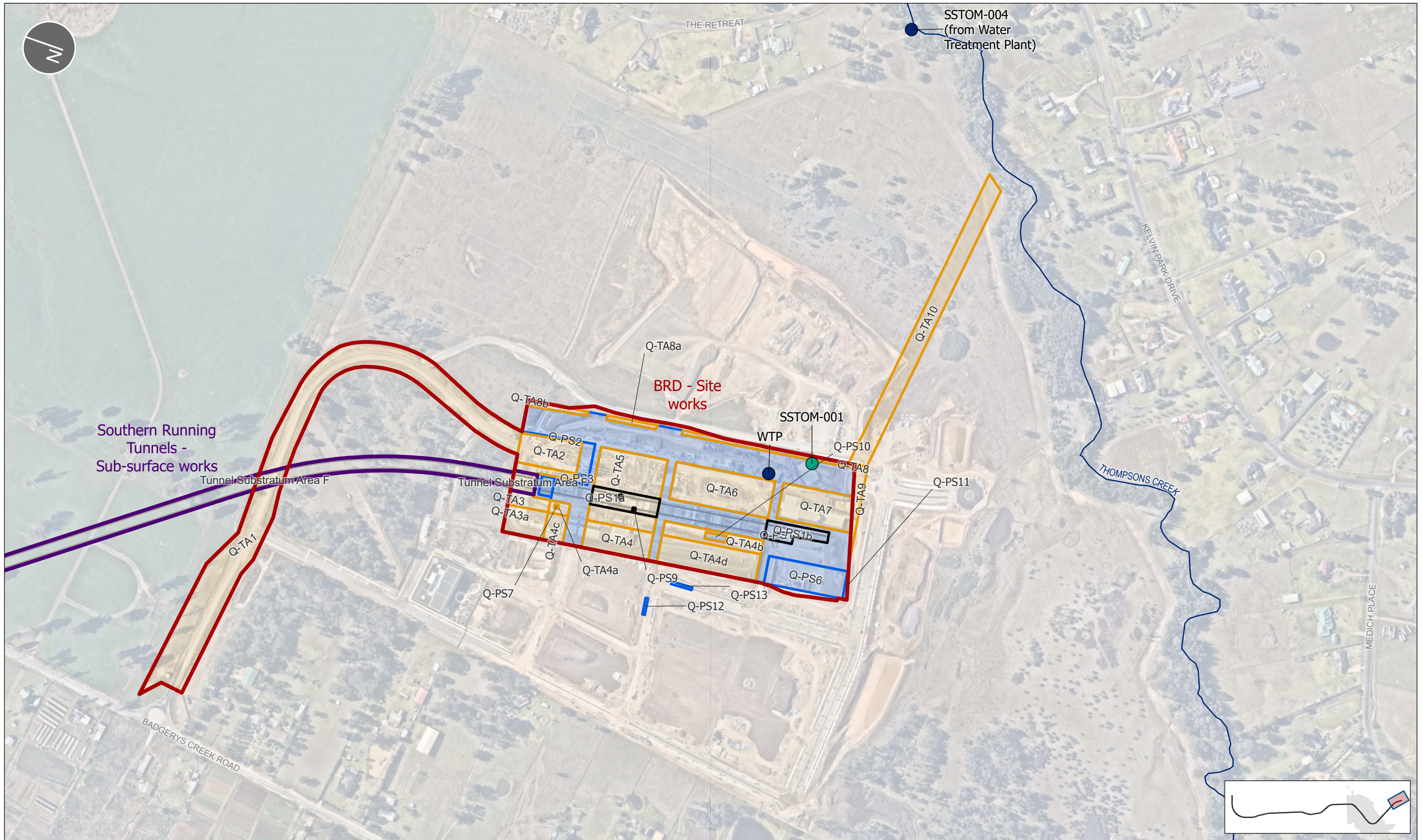
LEGEND			
Discharge Points	EPL Premise Boundary	Metro alignment	Site Access Schedule
● Temporary Sediment Basin	▭ Surface works	— Watercourse	▭ Project Site
	▭ Sub-surface works	▭ Western Sydney International boundary (WSP)	▭ Substratum
			▭ Temporary Area

TITLE
EPL 21807 PREMISE BOUNDARY

NOTES	
EPL Premise Boundary Map	

PROJECT Sydney Metro – Western Sydney Airport - SSTOM	CLIENT Sydney Metro
SCALE 1:5,000	MAP # SMWSASSM-PLD-1NL-ENV-GIS-000001_42
SHEET 11 of 12	DATE 09/09/2025

REV	DATE	DESCRIPTION
37	20.05.2025	Premise Map update
38	05.06.2025	Premise Map update
39	05.07.2025	Premise Map update
40	07.07.2025	Premise Map update
41	25.08.2025	Premise Map update
42	09.09.2025	Premise Map update



LEGEND			
Discharge Points	EPL Premise Boundary	Metro alignment	Site Access Schedule
● Temporary Sediment Basin	▭ Surface works	— Watercourse	▭ Project Site
● Water Treatment Plant	▭ Sub-surface works	▭ Western Sydney International boundary (WSP)	▭ Substratum
			▭ Temporary Area

TITLE
EPL 21807 PREMISE BOUNDARY

NOTES	
EPL Premise Boundary Map	

PROJECT	CLIENT
Sydney Metro – Western Sydney Airport - SSTM	Sydney Metro

SCALE	A3	DATE
1:5,000		09/09/2025

SHEET	COORDINATE SYSTEM	DATE
12 of 12	GDA2020 MGA Zone 56	09/09/2025

REV	DATE	DESCRIPTION
37	20.05.2025	Premise Map update
38	05.06.2025	Premise Map update
39	05.07.2025	Premise Map update
40	07.07.2025	Premise Map update
41	25.08.2025	Premise Map update
42	09.09.2025	Premise Map update

MAP #	REV
SMWSASSM-PLD-1NL-ENV-GIS-000001_42	42