

Sydney Metro WSA - SSTOM - OHE - E57 Orchard Hills Station Consultation report

SMWSASSM-PLD-OHE-SN150-CG-RPT-000001 (Rev 11)

Parklife Metro D&C

Version Control

Revision	Author	Date	Comments	Approved by
00		16/01/2024	Initial draft	
01		18/06/2024	Updated document	
02		13/09/2024	Updated document	
03		17/09/2024	Updated to address comments	
04		27/11/2024	Updated document	
05		10/03/2025	Updated document	
06		19/03/2025	Updated to address comments	
07		20/06/2025	Updated document	
08		19/09/2025	Updated document	
09		19/12/2025	Updated document	
10		19/03/2026	Updated document	
11		19/06/2026	Updated document	

Details of Revision Amendments Document Control

The Parklife Metro Environment Manager and the Parklife Metro Stakeholder & Community Engagement Director are responsible for ensuring this report is reviewed and approved and updated as required.

The Parklife Metro Community & Stakeholders Place Manager is responsible for the consultation and updating of this report, as required.

Amendments

Any revisions or amendments must be approved by the Environment Manager and the Stakeholder & Community Engagement Director before being distributed and implemented.

Contents

Glossary	4
1 Overview	5
1.1 Project background	5
1.2 SSTOM scope of works.....	5
1.2.1 Orchard Hills Metro Station	8
1.3 Out-of-hours scope of works	10
1.3.1 Ongoing oversized plant and equipment deliveries	10
1.3.2 Extended work hours for concreting and supporting formwork.....	10
1.3.3 Tunnel and underground station box fit out	10
1.3.4 Utility investigation and installation works	10
2 Conditions of Approval requirements	10
2.1 Out-of-hours Works – Community Consultation on Respite	10
2.2 Respite eligibility.....	11
2.3 Mitigation measures and planned respite	11
3 Consultation tools and channels	12
3.1 Communications tools	12
3.2 Communication activities timeline	14
3.3 Stakeholder list.....	16
3.4 Distribution maps.....	16
4 Conclusion	17
Appendix A Communication materials	18
Appendix B Impacted properties and consultation records	21

Glossary

Standard terms and definitions.

TABLE 1 STANDARD TERMS

Term	Definition
Project	Sydney Metro – Western Sydney Airport
Parklife Metro	Consortium comprising entities of Plenary, Siemens Mobility, Siemens Financial Services, WeBuild and RATP Dev as successful contractors for the Sydney Metro Western Sydney Airport SSTOM Package.
Parklife Metro D&C	Parklife Metro Design and Construct. Consists of WeBuild S.P.A, Siemens Mobility Pty Ltd. Responsible for the construction of SSTOM Works

TABLE 2 ABBREVIATIONS

Term	Definition
CCMS	Construction Complaints Management System
CCS	Community Communications Strategy
CEMP	Construction Environmental Management Plan
CNVS	Sydney Metro Construction Noise and Vibration Standard
CNVIS	Construction Noise and Vibration Impact Statement
CNVMP	Construction Noise and Vibration Management Plan
CoA /*	Conditions of Approval
CSSI	Critical State Significant Infrastructure
DNVIS	Detailed Noise and Vibration Impact Statement
DPE	Department of Planning and Environment
EPA	NSW Environment Protection Authority
EPL	Environmental Protection Licence
OOH	Out-of-hours
OOHW	Out-of-hours work
OSOM	Over-size over-mass
SBT	Station boxes and tunnelling works
SCAW	Surface and civil alignment works
SM-WSA	Sydney Metro – Western Sydney Airport
SSTOM	Stations, Systems, Trains, Operations and Maintenance

1 Overview

This E57 Community Consultation Report provides a summary of consultation undertaken by Parklife Metro in accordance with Condition of Approval E57, with respect to out-of-hours work (OOHW) between July, August and September 2026. Works include deliveries of oversized plant and equipment, extended work hours for concrete works and tunnel and underground station box fit out works at the Orchard Hills Metro Station site.

1.1 Project background

The Sydney Metro – Western Sydney Airport (SM-WSA) will become the transport spine for Greater Western Sydney, connecting communities and travellers with the new Western Sydney International (Nancy-Bird Walton) Airport and the growing region.

The city-shaping project, from St Marys through to the new airport and the Western Sydney Aerotropolis (the new suburb of Bradfield), will provide a major economic stimulus for western Sydney, supporting more than 14,000 jobs during construction for the NSW and national economies.

Jointly funded by the Australian and NSW Governments, the 23-kilometre new railway will link residential areas with job hubs including the new Aerotropolis and connect travellers from the new airport to the rest of Sydney's public transport system.

The Australian and NSW governments have awarded all three major contracts for the Sydney Metro – Western Sydney Airport project:

- Station boxes and tunnelling (SBT)
- Surface and civil alignment works (SCAW) – currently in delivery
- Stations, Systems, Trains, Operations and Maintenance (SSTOM) – currently in delivery.

1.2 SSTOM scope of works

In December 2022, the largest ever Public Private Partnership (PPP) contract in New South Wales, was awarded to Parklife Metro for the Stations, Systems, Trains, Operations and Maintenance (SSTOM) works for the Sydney Metro - Western Sydney Airport Project.

Parklife Metro will deliver:

- Around 4.3km of twin rail tunnels (generally located side by side) between St Marys (the Northern extent of the project) and Orchard Hills
- A cut-and-cover tunnel around 350 metres long (including tunnel portal), transitioning to an in-cutting rail alignment south of the M4 Western Motorway at Orchard Hills
- Around 10km of rail alignment between Orchard Hills and Western Sydney International, consisting of a combination of viaduct and surface rail alignment
- Around two kilometres of surface rail alignment within Western Sydney International Airport
- Around 3.3km of twin rail tunnels (including tunnel portal) within Western Sydney International Airport
- Around 3km of twin rail tunnels between Western Sydney International Airport and Bradfield
- Six new Metro Stations:
 - St Marys (providing an interchange with the existing Sydney Trains suburban rail network)
 - Orchard Hills
 - Luddenham
 - Airport Business Park
 - Airport Terminal

- Bradfield (the new Western Parkland City)
- Grade separation of the track alignment at key locations including:
 - Where the alignment interfaces with existing infrastructure such as the Great Western Highway, M4 Western Motorway, Lansdowne Road, Patons Lane, the Warragamba to Prospect Water Supply Pipelines, Luddenham Road, the future M12 Motorway, Elizabeth Drive, Derwent Road and Badgerys Creek Road
 - Crossings of Blaxland Creek, Cosgroves Creek, Badgerys Creek and other small waterways to provide flood immunity for the Project
- Modifications to the existing Sydney Trains station and rail infrastructure at St Marys (where required) to support interchange and customer transfer between the new metro station and the existing Sydney Trains suburban rail network
- A stabling and maintenance facility and operational control centre located to the south of Blaxland Creek and east of the proposed metro track
- New pedestrian, cycle, park-and-ride and kiss-and-ride facilities, public transport interchange infrastructure, road infrastructure and landscaping as part of the station precincts.

Parklife Metro will also operate and maintain the Sydney Metro – Western Sydney Airport (SM-WSA) line, and its assets for 15 years after it becomes operational.

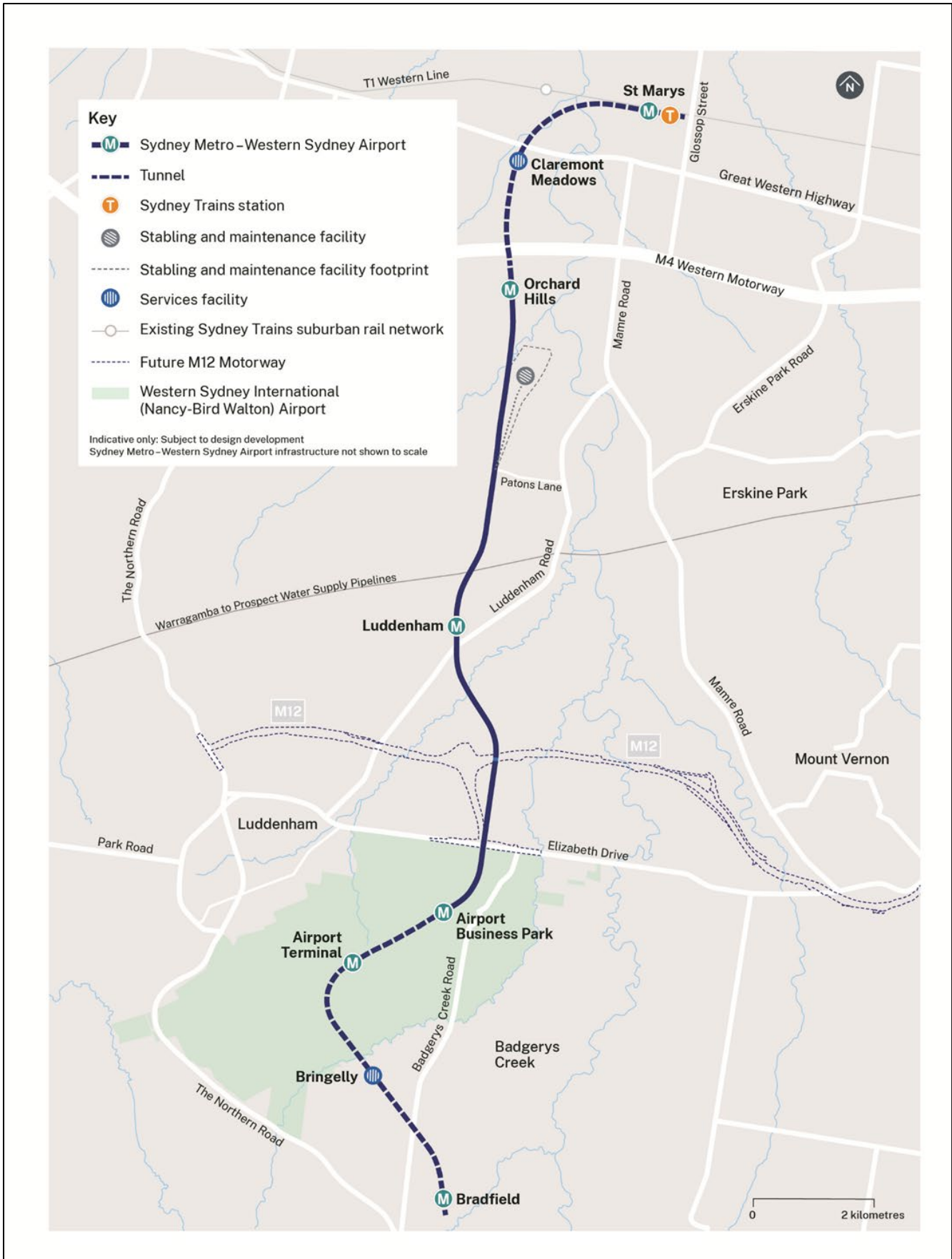


FIGURE 1. MAP OF THE SM-WSA PROJECT ALIGNMENT AND STATION LOCATIONS

1.2.1 Orchard Hills Metro Station

The Orchard Hills Metro Station will be an open cut station, located on the eastern side of Kent Road, at the intersection of Lansdowne Road. The station will have one entrance on Kent Road, with provision for a second entrance to be built east of the station in the future.

Key features and benefits of the Orchard Hills Metro Station will include:

- Secure bicycle parking
- Park-and-ride facilities, with a capacity of up to 500 spaces
- Transport interchange facilities, including bus bays and shelters, kiss-and-ride bays, and point-to-point vehicle facilities
- Upgrades to Kent Road and Lansdowne Road, which will involve the construction of new precinct roads, installation of new pedestrian crossings, and the creation of a new public plaza adjacent to the proposed station entrance
- Potential for future station retail amenities

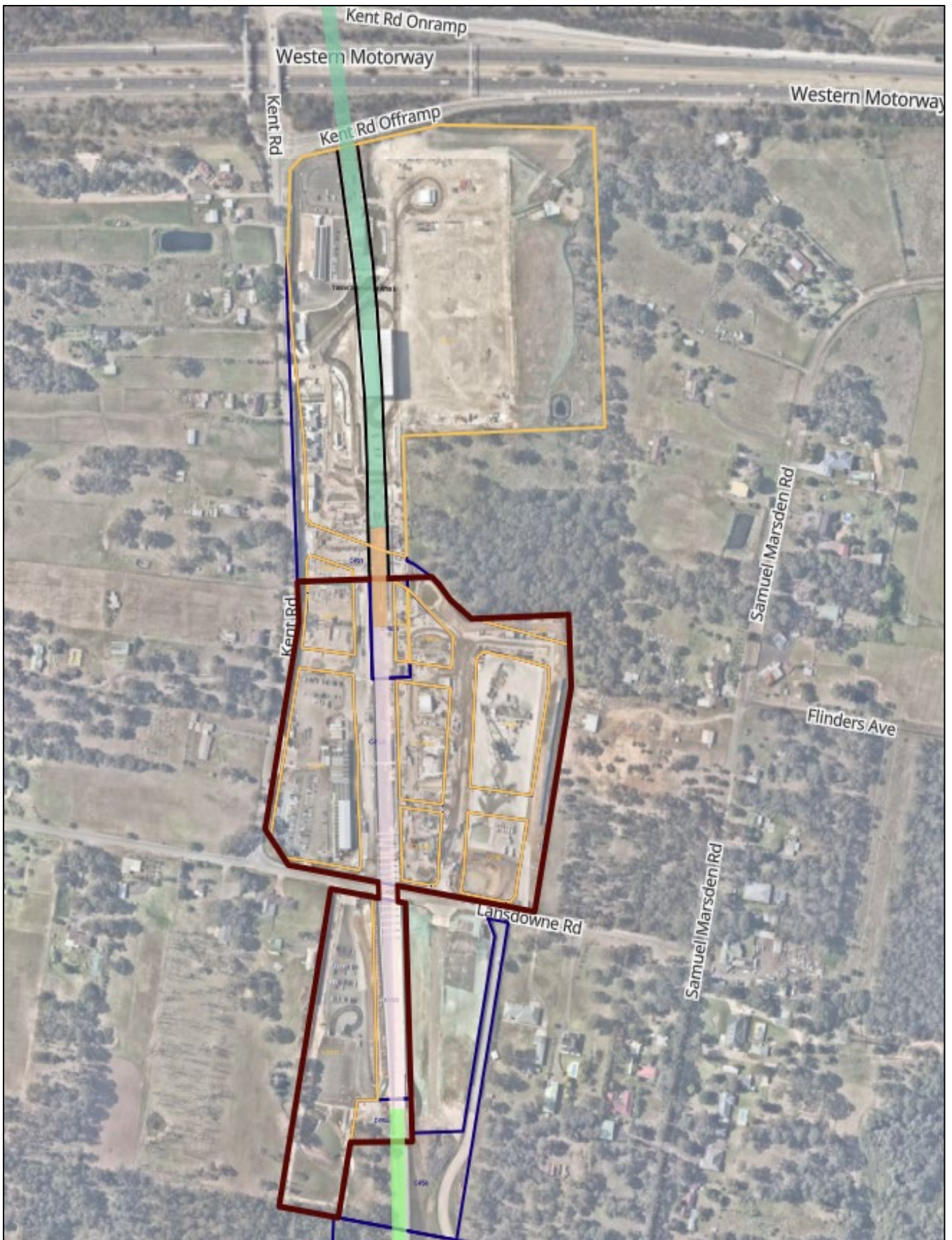


FIGURE 2 MAP OF THE ORCHARD HILLS METRO STATION

1.3 Out-of-hours scope of works

1.3.1 Ongoing oversized plant and equipment deliveries

Oversized plant, structures and materials deliveries are required at the Orchard Hills worksite to facilitate ongoing construction of the metro station. These oversized and/or overmass (OSOM) deliveries have been determined by the police or other authorised authorities to require special arrangements to transport along public roads (EPL L5.5 ii) and the relevant road network operator has confirmed that carrying out the works and activities during standard construction hours would result in a high risk to road network performance. In this regard, to access the road network, operating conditions including route and travel time restrictions have been applied to OSOM deliveries. Time restrictions require these OSOM vehicle movements to be carried out at night, and outside peak travel times when the road authority has granted approval to occupy the roadway. Access to the road network for OSOM deliveries is generally permitted between 9pm and 5am. This is to minimise impacts to traffic and reduce the risk to worker and road user safety.

1.3.2 Tunnel and underground station box fit out

Tunnel and underground station box fit-out works are approved to occur 24 hours a day, 7 days per week as per EPL 21807 condition L5.14, which states:

“L5.14 Works outside standard construction hours - 24-hour works

- a. *The following works are permitted to be undertaken 24 hours a day, 7 days per week for activities at the St Marys Station Site, Claremont Meadows services shaft site, Orchard Hills Station site, Bringelly services shaft site, and Bradfield Station site:*
 - i. *Tunnel and underground station box fit out works and ancillary surface support works”*

To facilitate the tunnel and underground station box fit out, craneage operations and delivery of materials through the station dive portal via a telehandler will continue at the Orchard Hills Station site, with approval to operate 24 hours a day, 7 times a week.

1.3.3 Utility investigation and installation works

Out-of-hours work may be required to locate and install utility services along Kent, Lansdowne and Samuel Marsden Roads. The utility works are critical infrastructure for the Orchard Hills Station.

Note: The need for utility works has been captured generally as part of the consultation activities undertaken to date. Consultation will be carried out with identified sensitive receivers as required once details of the works are confirmed (details including dates, times, duration etc).

2 Conditions of Approval requirements

This E57 Community Consultation Report provides a summary of consultation undertaken in accordance with Condition of Approval E57 with respect to out of hours work, between July and September 2026 and activities proposed at the Orchard Hills Metro Station site.

2.1 Out-of-hours Works – Community Consultation on Respite

Condition of Approval E57 states:

In order to undertake out-of-hours work outside the work hours specified under Condition E38, appropriate respite periods for the out-of-hours work must be identified in consultation with the community at each affected location on a regular basis. This consultation must include (but not be limited to) providing the community with:

- (a) a progressive schedule for periods no less than three (3) months, of likely out-of-hours work;
- (b) a description of the potential work, location and duration of the out-of-hours work;

(c) the noise characteristics and likely noise levels of the work; and

(d) likely mitigation and management measures which aim to achieve the relevant noise management levels (NMLs) under Condition E43 (including the circumstances of when respite or relocation offers will be available and details about how the affected community can access these offers).

The outcomes of the community consultation, the identified respite periods and the scheduling of the likely out-of-hour work must be provided to the ER prior to the out-of-hours work commencing.

Note: Respite periods can be any combination of days or hours where out-of-hours work would not be more than 5 dB(A) above the RBL at any residence.

2.2 Respite eligibility

In accordance with the Sydney Metro Construction Noise and Vibration Standard (CNVS), the Construction Noise and Vibration Management Plan (CNVMP), and the Detailed Noise and Vibration Impact Statements (DNVIS); all noise affected receivers are eligible for respite periods, applicable during out-of-hours activities when works are predicted to exceed the NML's unless the out-of-hours works are subject to an EPL or a CSSI Planning Approval condition.

Additional mitigation measures as per the CNVS, CNVMP and DNVIS are included in Table 3 below.

TABLE 3 OUT-OF-HOURS MITIGATION MEASURES AS PER THE PROJECTS ENVIRONMENTAL PLANNING DOCUMENTS

Time period		Mitigation measures for predicted LAeq (15 minute) airborne noise level above NML			
		0-10dB	10-20dB	20-30dB	>30dB
Approved construction hours	Mon-Fri (7:00am - 6:00pm)				
	Sat (8:00am – 1:00pm)	-	LB	LB, M, SN	LB, M, SN
	Sun/Pub Hol (Nil)				
OOHW (Evening)	Mon-Fri (6:00pm – 10:00pm)				
	Sat (1:00pm – 10:00pm)	LB	LB, M	LB, M, SN, RO	LB, M, SN, IB, PC, RO
	Sun/Pub Hol (8:00am – 6:00pm)				
OOHW (Night)	Mon-Fri (10:00pm – 7:00am)				
	Sat (10:00pm – 8:00am)	LB	LB, M, SN, RO	LB, M, SN, IB, PC, RO, AA	LB, M, SN, IB, PC, RO, AA
	Sun/Pub Hol (6:00pm – 7:00am)				

NOTE: Phone calls (PC), Monitoring (M), Individual briefings (IB), Alternative Accommodation (AA), Specific Notification (SN), letterbox drop (LB), Duration Reduction (DR), Project Specific Respite Offer (RO).

2.3 Mitigation measures and planned respite

This work is expected to generate intermittent periods of noise, when the delivery trucks have reached site, and unloading the equipment. For the proposed out-of-hours work, the following mitigation measures and respite will be implemented:

- Noise barriers in the form of a spoil mound and shipping containers installed between the station box and the closest eastern receivers

- Works affecting the same sensitive receivers will not be undertaken more than three nights in a week, more than two consecutive nights, or more than 10 nights in a month (unless specified by an EPL condition, as reported in Section 1)
- Concrete activities (as per EPL L5.10 – formworks, pouring and finishing) that occur outside of standard construction hours are permitted on 12 occasions per month
- Noise monitoring will be undertaken to confirm our noise modelling, and inform additional mitigation measures, as required
- Noise blankets will be used when performing smaller tasks where sporadic high noise levels are expected
- All vehicles will be turned off when not in use, non-tonal reversing alarms will be fitted to plant and machinery, and trucks will avoid reversing, where feasible
- Temporary lighting will be directed away from properties, to avoid light spill
- Communication will be limited to radios only when moving and unloading equipment, with no shouting, use of horns or loud radios, unless there is an emergency
- Use of rubber faced mallets instead of hammers to reduce metal to metal contact
- Ongoing doorknocks and consultation, to seek further feedback, and to be able to address any reasonable concerns
- Co-ordination of out-of-hours works with nearby construction projects to minimise cumulative noise impact to sensitive receivers and ensure that respite periods are met.

3 Consultation tools and channels

Community consultation has been undertaken prior to commencement of the out-of-hours work in accordance with the PLM Community Communications Strategy (CCS) and the Project’s Environmental Protection Licence (EPL) 21807.

3.1 Communications tools

Consultation includes a range of tools including:

TABLE 4 COMMUNICATION TOOLS

Type	Purpose and use
Monthly construction updates	<p>A monthly construction update distributed at the start of each month, providing details on:</p> <ul style="list-style-type: none"> • Upcoming construction activities for the month, including any OOHW • Hours of work, and durations • Equipment used on site • Traffic, pedestrian and cyclist routes on any changes, closures, and/detours • Likely impacts of construction activities, including noise, vibration, traffic, access, and dust • Mitigation measures to reduce the impacts of activities • Work location maps

- Contact details, including how feedback can be provided

Out-of-hours notifications

An out-of-hours notification distributed to a 200m radius of site, or further as required to notify all noise affected receivers, no less than seven calendar days and no more than 14 calendar days, prior to OOHW commencing, providing details on:

- Upcoming OOH construction activities, including hours of work and durations
- Equipment used on site
- Traffic, pedestrian and cyclist routes on any changes, closures, and/detours
- Likely impacts of construction activities, including noise, vibration, traffic, access, and dust during the OOHW
- Mitigation measures to reduce the impacts of activities during the OOHW
- OOHW location maps
- Contact details, including how feedback can be provided

Specific notifications

Specific notification distributed to those identified as impacted receivers during the OOHW.

Specific notification is used to support the monthly construction updates and OOHW notifications, to provide additional details on the impacts, and any changes that may occur.

Doorknocks

Doorknocks to impacted properties to consult on the proposed OOHW, and any feedback.

Community Information Line: 1800 717 703

Provides community access to the project communications team during construction hours. OOH complaints will be referred to the on-call Place Manager.

Sydney Metro email: sydneymetroswa@transport.nsw.gov.au

Provides access during business hours to the Sydney Metro project communications team. Website enquiries are directed through this email address.

Postal address for written feedback: Sydney Metro, PO BOX K659 Haymarket, NSW 1240

Provides access to the broader Sydney Metro project. Address is included in all notifications and newsletters.

Consultation Manager

All interactions with stakeholders will be recorded in this database which is established by Sydney Metro.

3.2 Communication activities timeline

TABLE 5 COMMUNICATION ACTIVITIES TIMELINE

Date	Activity	
28 May 2024	Monthly construction update distributed to 200m of site.	Distribution to properties in Figure 2. Also includes: Campaign email Notification uploaded to SM website
17 June 2024	Specific notification distributed for extended work hours for concreting works.	Properties listed in Appendix C
18 June 2024	Doorknock properties as a courtesy directly adjacent to the worksite with specific notification for extended work hours for concreting works.	Targeted doorknock to properties in Section 3.3, Table 4 - Extended hours – concrete pours and concrete finishing works SWMY slips left if no contact was made.
25 November 2024	Doorknock properties as a courtesy directly adjacent to the worksite with specific notification for extended work hours for concreting works and concrete batching plant.	Targeted doorknock to properties in Section 3.3, Table 4 - Extended hours – batching plant and concrete pours.
27 January 2025	Monthly construction update distributed to 200m of site.	Distribution to properties in Figure 2. Also includes: Campaign email Notification uploaded to SM website
19 March 2025	Re-engagement with the community on any proposed OOHV. All feedback received will be considered and implemented, where feasible.	Distribution to properties in Figure 3. Also includes: Doorknocks Campaign email Notification uploaded to SM website
12 June 2025	Re-engagement with the community on any proposed OOHV. All feedback received will be considered and implemented, where feasible.	Distribution to properties in Figure 3. Also includes: Doorknocks Campaign email Notification uploaded to SM website

17 September 2025	Re-engagement with the community on any proposed OOHW. All feedback received will be considered and implemented, where feasible.	Distribution to properties in Figure 3. Also includes: Doorknocks Campaign email Notification uploaded to SM website
17 December 2025	Re-engagement with the community on any proposed OOHW. All feedback received will be considered and implemented, where feasible.	Distribution to properties in Figure 3. Also includes: Doorknocks Campaign email Notification uploaded to SM website
22 January 2026	Re-engagement with the community on any proposed OOHW. All feedback received will be considered and implemented, where feasible.	Distribution to properties in Figure 3. Also includes: Doorknocks Campaign email Notification uploaded to SM website
18 March 2026	Re-engagement with the community on any proposed OOHW. All feedback received will be considered and implemented, where feasible.	Distribution to properties in Figure 3. Also includes: Doorknocks Campaign email Notification uploaded to SM website
16 June 2026	Re-engagement with the community on any proposed OOHW. All feedback received will be considered and implemented, where feasible.	Distribution to properties in Figure 3. Also includes: Doorknocks Campaign email Notification uploaded to SM website
Ongoing	Re-engagement with the community on any proposed OOHW. All feedback received will be considered and implemented, where feasible.	Distribution to properties in Figure 3. Also includes: Doorknocks Campaign email Notification uploaded to SM website

3.3 Stakeholder list

TABLE 4. STAKEHOLDER LIST FOR DISTRIBUTION AREAS

Stakeholder	Location	Communication activities
Broader distribution area (Properties listed in Appendix B)	Orchard Hills Metro Station Extended notification distribution area to all noise affected receivers.	Monthly notifications OOHW notifications Campaign emails
Impacted properties from OOH works		Monthly notifications Campaign emails Doorknock

3.4 Distribution maps

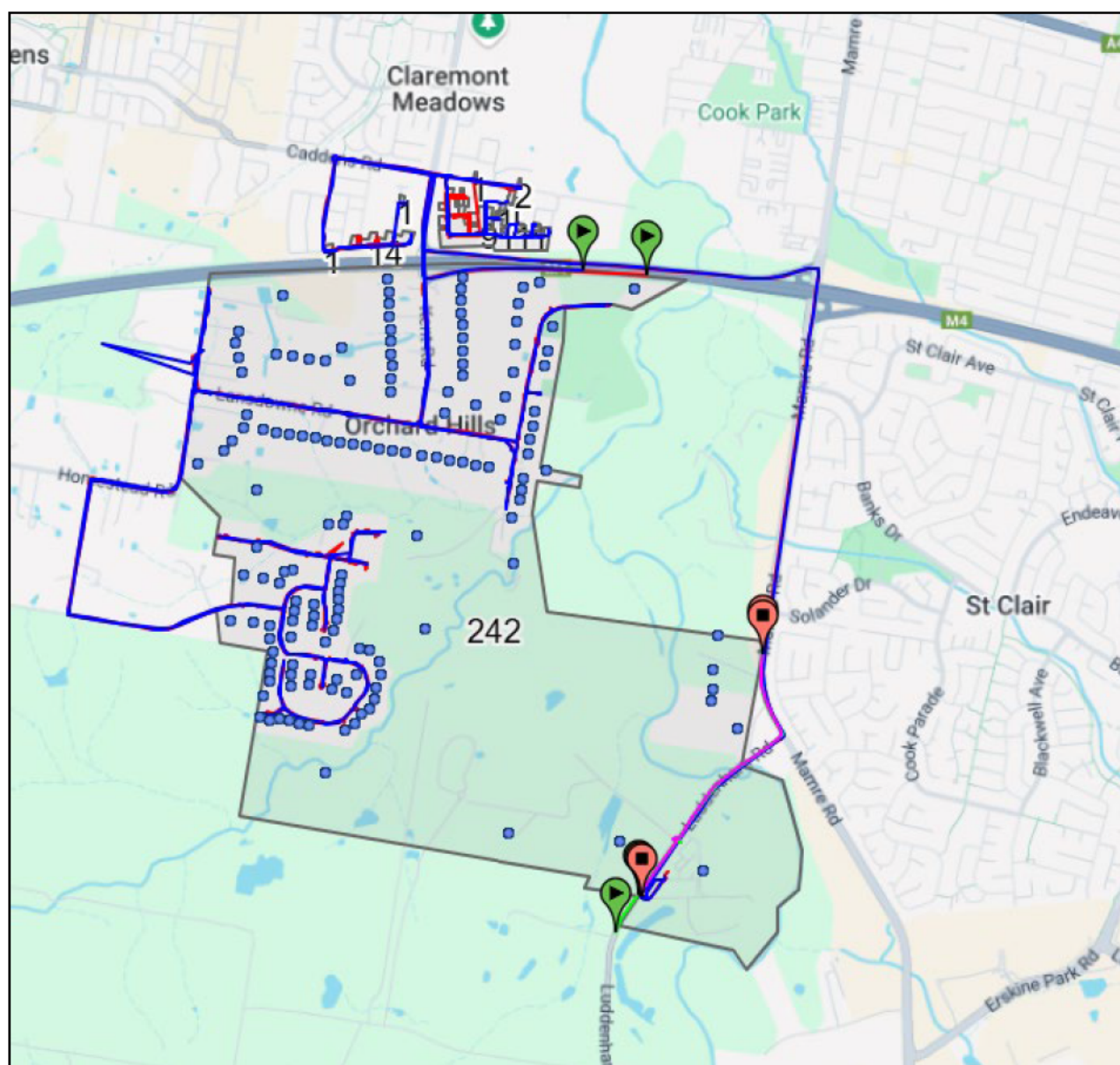


FIGURE 3 DISTRIBUTION MAP TO NOISE IMPACTED RECIEVERS (ORCHARD HILLS AND SMF)

4 Conclusion

All consultation undertaken to date, including monthly construction updates; OOHW notifications, specific notifications and door knocks to all noise affected receivers identified in our noise modelling has resulted in no feedback or preferences on specific mitigation measures or respite periods. Receivers have agreed to the respite periods proposed for all upcoming OOHW.

The standard mitigation measures and respite requirements established in the Sydney Metro Construction Noise and Vibration Standard and Project EPL 21807, will be implemented during the works and follow-up consultation will be undertaken by the Parklife Metro Community Place Manager to ascertain the effectiveness of the implemented controls and seek additional feedback.

As per E57, if any feedback is received it will be considered and implemented where feasible, and any specific feedback or preferences on mitigation measures will require a revision of the DNVIS

Appendix A Communication materials

MONTHLY CONSTRUCTION UPDATE

Sydney Metro – Western Sydney Airport

Notification – Orchard Hills Metro Station and the Stabling and Maintenance Facility

Sydney Metro is Australia's biggest public transport project.
July 2026

Sydney Metro – Western Sydney Airport is the new metro railway line which will service Greater Western Sydney and the new Western Sydney International (Nancy-Bird Walton) Airport. A city-shaping project, the new 23-kilometre metro railway will connect Bradfield City Centre with St Marys in the north – where customers can connect to the existing Sydney Trains suburban T1 Western Line.

Parklife Metro consortium is delivering the Stations, Systems, Trains, Operations and Maintenance (SSTOM) works. See the list below for the work activities at Orchard Hills during July 2026.

What's new in July 2026?

- installation of high voltage equipment including transformers and switchgears
- installation of platform screen doors
- cable pulling for high voltage and low voltage cables
- sewer-main construction on Samuel Marsden Road
- Kent Road and Lansdowne Road high voltage relocation works
- internal retaining wall construction for future precinct road.

Stations, Systems, Trains, Operations and Maintenance work includes:

Orchard Hills Metro Station:

- Roof installation in progress
- Brick facade installation on the east elevation of Northern Services building commenced
- Tunnel ventilation system works on-going
- Installation of storm drain and water mains to the East of the Station in progress delivery and installation of mechanical, electrical and piping equipment in the station building
- ongoing survey works to confirm the design, and verify construction works
- surveying and geotechnical investigations, including potholing, non-destructive digging and testing along local surrounding roads to inform utility designs
- delivery of over-sized equipment, machinery and materials
- station box finishing works.

Stabling and Maintenance Facility:

- major earthworks including importing materials, excavations, constructing permanent basin, and compacting of the rail areas
- combined services route and trunk services installation
- continuation of works on the permanent access road
- installation of steel structures and blockwork to minor buildings
- mechanical, electrical, plumbing and architectural finishes activities in the minor buildings
- ongoing deliveries of materials, machinery and equipment
- installation of light poles, overhead catenary structures and signalling equipment
- security fencing installation
- commencement of landscaping works.

Linewide work – Orchard Hills to Warragamba Pipeline

- service utility installations and surveying
- installation of light pole footings and light pole structure
- installation of overhead wire structure and cable pulling
- concreting along the alignment at surface level
- installation of light pole footings and light pole structure
- installation of overhead wire structure and cable pulling
- installation of hydrant piping and hydro testing
- cable pulling along the alignment
- ongoing deliveries of materials, machinery and equipment to the site compounds at Kent Road
- installation of rail exclusion zones
- active transport corridor road and bridge construction works.

Other works in the area:

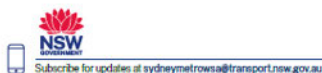
Bush regeneration works

- inspection and assessment of sites for planned future works
- removal of weeds by hand and using hand tools
- spot spraying of herbicides
- use of chainsaws to cut woody weeds and applying herbicide to the cut surface ("cut and paint" method)
- use of brushcutters for targeted slashing.

Work hours:

Standard construction hours are **Monday to Friday from 7am to 6pm** and **Saturdays from 8am to 1pm**.

Some work will be required to take place outside our standard construction hours to minimise traffic impacts or to ensure the safety of pedestrians, motorists and our workers. Out-of-hours work activities will be carried out in line with the project Environmental Protection Licence, Road Occupancy Licences, and Transport for NSW requirements.



Out-of-hours work includes:

- delivery of oversized equipment, machinery and materials
- 24/7 tunnel-related activities
- extended work hours for excavation, formwork, reinforcement and concrete pour, steel fixing, concrete pours and concrete finishing works inside the station box at the Orchard Hills site and at the Stabling Maintenance Facility across various structures including the Operations Control Centre (OCC) and Maintenance and Administration Building (M&A)
- dewatering activities at the Orchard Hills and Stabling Maintenance Facility sites
- internal fit-out of buildings
- external roofing and cladding
- service utility installations and surveying

Impacted surrounding residents and businesses will be notified in advance of any out-of-hours work.

What to expect:

- mitigation measures will be in place to minimise impacts including installing noise blankets where feasible, respite periods during high noise activities, noise and vibration monitoring, and water carts for dust suppression
- increased light and heavy vehicle movements on surrounding roads, and local road closures. All vehicles will be turned off when not in use, non-tonal reversing alarms will be fitted to plant and machinery and trucks will avoid reversing into and on site, where feasible
- temporary lighting to ensure a safe worksite will be directed away from properties
- communication will be limited to radios only when moving and unloading equipment, with no use of horns or loud radios
- traffic control and signage to safely assist motorists, pedestrians, and cyclists
- livestock should be monitored, as nearby activity may generate noise that could unsettle animals.

Noise Characteristics:

The characteristics of the noise generated across the project will consist of:

- non-tonal reverse alarms on machinery
- vehicle movement at low speed
- low tonal alarm from crane works
- intermittent noise (small bangs) from hand tools.

Equipment used:

Equipment used will include, but is not limited to, excavators, cranes, dozers, graders, rollers, vacuum truck, water carts, heavy and light site vehicles, generators, survey equipment, traffic management devices, concrete agitators, pneumatic drills, concrete saws, bobcats, chainsaws, telehandlers, rail saw, rail shears, rail grinders, sand blaster, front end loaders, water pumps, track tamper, non-powered and powered hand tools (including hammers and drills), franna crane, GenSet, Elevated Working Platforms (EWPs) and light vehicles.

Changes to traffic, pedestrian, and cyclist routes:

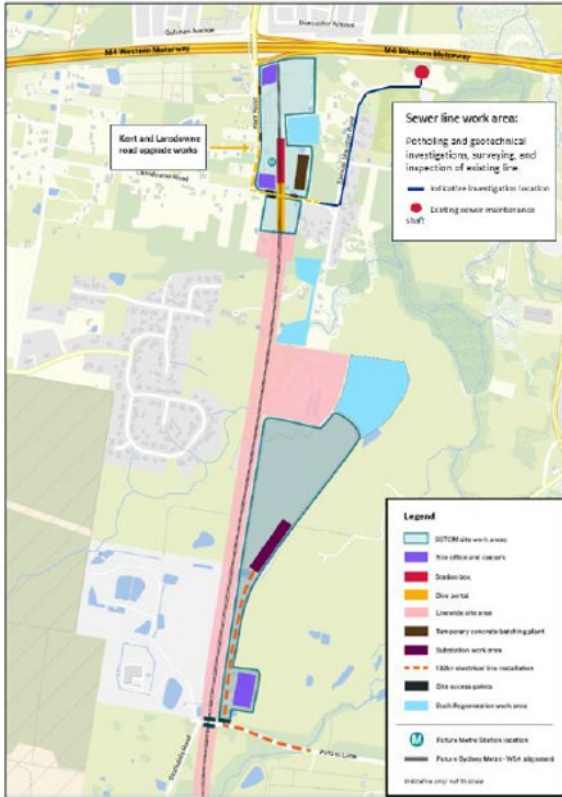
During these works, traffic control will be in place to assist motorists, pedestrians, and cyclists with any changes to traffic conditions. This may include contraflow (managed directional changes to the flow of traffic) and stop-slow traffic controls. The time of these changes will vary and are dependent on road authority approvals.

Access to driveways and buildings will be maintained at all times. Residents will be separately notified if access to driveways is affected, or access to private property is required.

Three-month out-of-hours lookahead activities:

Activity	Equipment	Work hours	Timing
SSTOM works – Orchard Hills Metro Station site			
Works within the station box to support the tunnel and underground station box fit out	Telehandler, excavator, front end loader, hand drills and cable pulling.	24 hours a day, seven days a week	Ongoing – 2026
Installation, incoming and outgoing deliveries of oversized construction material	Oversize, over mass (OSOM) franna, mobile crane, telehandler, excavator, front end, loader, hand drills.	10pm to 7am, Monday to Saturday.	Ongoing – 2026
SSTOM works – Stabling Maintenance Facility site			
Additional construction hours and extension includes: <ul style="list-style-type: none"> • earthworks • rail track construction • overhead wiring • concreting • external building construction 	Excavators, dump trucks, graders, compactors, rollers, dozers, elevated work platforms, mobile cranes, front end loader, telehandlers/forklifts, water carts, heavy and light vehicles, tamper, hand tools, rattle guns, concrete agitators, pumps, vibrators and generators.	6am to 7am, Monday to Friday (inclusive) 7am to 8am and 1pm to 6pm, Saturdays.	Ongoing – June 2026
Oversized deliveries of plant and materials	Traffic management, light and heavy vehicles, generators, lighting towers and mobile cranes.	10pm to 7am, Monday to Saturday	Ongoing – 2026
Operational Control Centre and Substation Internal fit out	Elevated work platforms, powered/non-powered hand tools, generators.	24 hours a day, 7 days a week	Ongoing - 2026
SSTOM works – Linewide			
All tunnel activities	concrete agitator, concrete pump, powered hand tools, survey equipment, light vehicles, forklifts, telehandlers, powered hand tools.	24 hours a day, seven days a week	Ongoing – August 2026

Work areas:



Stay connected through the Sydney Metro Connect App.

Access information in over 100 languages Download Sydney Metro Connect from the App store™ or get it on Google Play™.

For more information contact



24-hour Community Information Line 1800 717 703



sydneymetrowsa@transport.nsw.gov.au



Sydney Metro – Western Sydney Airport
PO Box K659, Haymarket NSW 1240



If you need help understanding this information, please contact the Translating and Interpreting Service on 131 450 and ask them to call us on 1800 717 703.

Appendix B Impacted properties and consultation records

Noise catchment area	Residential address	Affectation levels (dB range >NML Night Period)	Specific notification (X = undertaken)	Consultation Summary
NCA06		10-20dB	X	Written communications letterboxed including contact details and latest information for planned and potential OOHW. No feedback this round of doorknock.
NCA08		10-20dB	X	Written communications letterboxed including contact details and latest information for planned and potential OOHW. No feedback this round of doorknock.
NCA06		10-20dB	X	Written communications letterboxed including contact details and latest information for planned and potential OOHW. No feedback this round of doorknock.
NCA06		10-20dB	X	Written communications letterboxed including contact details and latest information for planned and potential OOHW. No feedback this round of doorknock.
NCA06		10-20dB	X	Written communications letterboxed including contact details and latest information for planned and potential OOHW. No feedback this round of doorknock.
NCA06		10-20dB	X	Written communications letterboxed including contact details and latest information for planned and potential OOHW. No feedback this round of doorknock.
NCA06		10-20dB	X	Written communications letterboxed including contact details and latest information for planned and potential OOHW. No feedback this round of doorknock.
NCA06		10-20dB	X	Written communications letterboxed including contact details and latest information for planned and potential OOHW. No feedback this round of doorknock.
NCA06		10-20dB	X	Written communications letterboxed including contact details and latest information for planned and potential OOHW. No feedback this round of doorknock.
NCA06		10-20dB	X	Written communications letterboxed including contact details and latest information for planned and potential OOHW. No feedback this round of doorknock.