



EPL 21807 Monitoring Report April 2026

SSMWSASSM-PLD-1NL-NL000-EV-RPT-000073

Parklife Metro D&C

Approval Record

Revision	Author	Date	Issue	Reviewed by	Approved by
00	[REDACTED]	12/05/2026	Initial Draft	[REDACTED]	[REDACTED]
Signature				[REDACTED]	

Contents

1	Introduction.....	5
1.1	Background	5
1.1.1	Stations, Systems, Trains, Operations and Maintenance works	5
1.2	Scope of this report	7
2	Reporting requirements	8
3	Monitoring	18
3.1	Weather Monitoring	18
3.2	Noise and Vibration Monitoring.....	19
3.3	Water Monitoring	20
3.3.1	Surface water monitoring.....	20
3.3.2	Discharge to water.....	20
Appendix A	Weather Observations – Penrith Lakes	25
	Weather Observations – Badgerys Creek.....	26
Appendix B	Noise Monitoring	27
Appendix C	Discharge to water.....	28
Appendix D	Surface water monitoring.....	29
Appendix E	Premise Maps – March	30

Table of Figures

FIGURE 1 OVERVIEW OF SMWSA PROJECT	6
--	---

Table of Tables

TABLE 1 LICENCE DETAILS	7
TABLE 2 EPL 21807 MONITORING REQUIREMENTS	9
TABLE 3 WEATHER SUMMARY AND TRIGGER WEATHER EVENTS FOR REPORTING PERIOD	18
TABLE 4 SUMMARY OF NOISE MONITORING FOR REPORTING PERIOD	19
TABLE 5 MONITORING/DISCHARGE POINTS AND AREAS	21
TABLE 6 - MONTHLY WEATHER OBSERVATION TABLE (PENRITH LAKES).....	25
TABLE 7 - MONTHLY WEATHER OBSERVATION TABLE (BADGERYS CREEK).....	26
TABLE 8 DETAILED NOISE MONITORING DATA	27
TABLE 9 WATER DISCHARGE TABLE	28

1 Introduction

1.1 Background

Sydney Metro is Australia's biggest public transport program comprising four main packages of work including Metro North-West Line, Sydney Metro City and Southwest, Sydney Metro West, and Sydney Metro Western Sydney Airport (SMWSA, the Project). The SMWSA will become the transport spine for Greater Western Sydney, connecting communities and travellers with the new Western Sydney International (Nancy-Bird Walton) Airport (referred to as Western Sydney International) and the growing region.

The Project involves the construction and operation of a new metro railway line around 23km in length that extends from the existing Sydney Trains suburban T1 Western Line at St Marys in the north to the new Bradfield Station in the south at Bringelly. The alignment includes a combination of tunnel, surface, bridges and viaduct sections, and comprises of six new metro stations between St Marys and the Bradfield Core precinct, as well as a stabling and maintenance facility and operational control centre to support the operation of the new metro railway line (see Figure 1).

1.1.1 Stations, Systems, Trains, Operations and Maintenance works

Parklife Metro D&C has been engaged to deliver the Stations, Systems, Trains, Operations and Maintenance (SSTOM) works. The scope of the Stations, Systems, Trains, Operations and Maintenance (SSTOM) package comprises:

- construction of the six new stations
- installation of tracks, signalling, mechanical and electrical systems
- supplying new driverless trains
- construction of stabling and maintenance facility at Orchard Hills
- operation and maintenance of the line and its assets, and
- handback of operations and maintenance at the end of term.

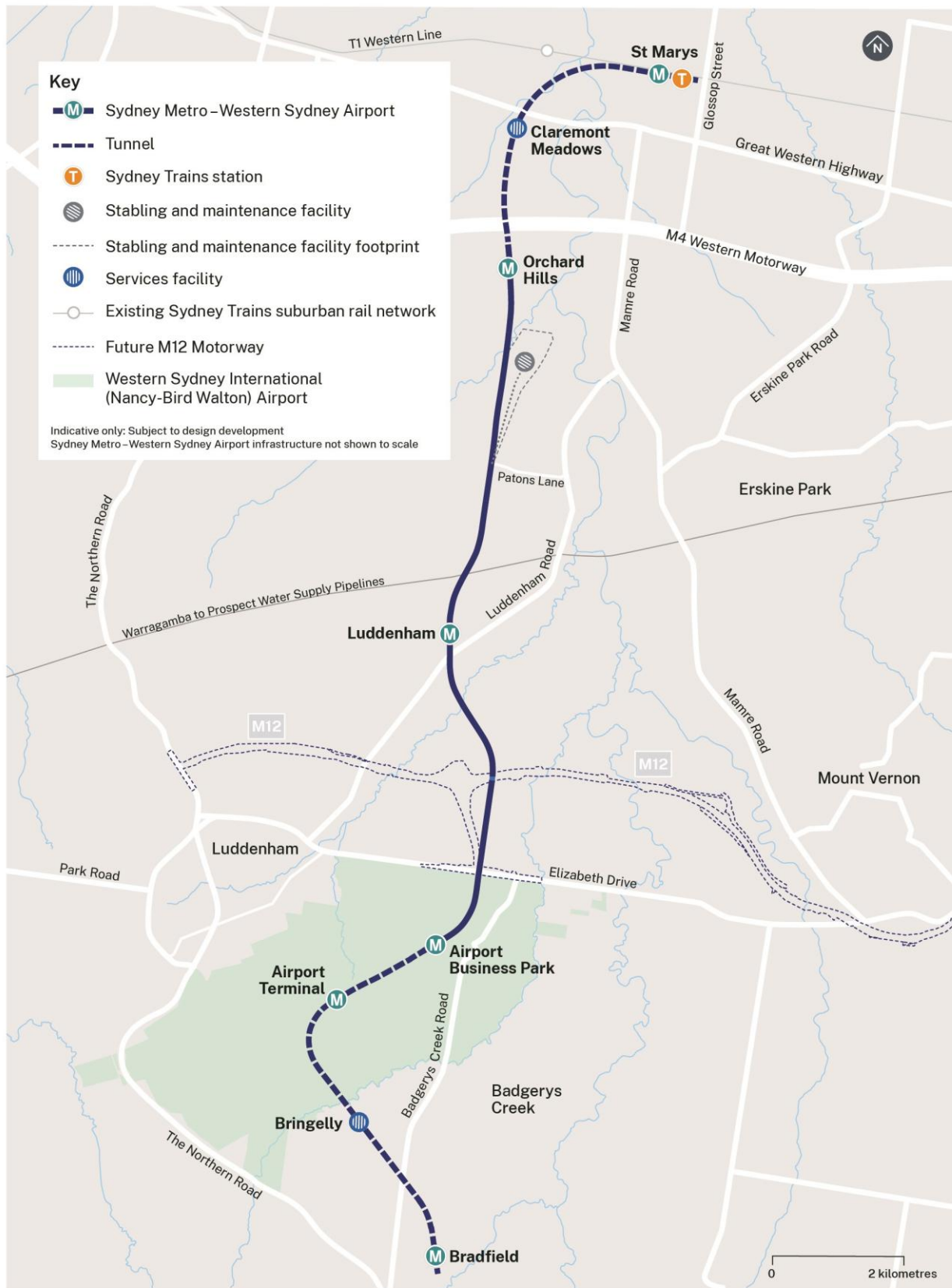


FIGURE 1 OVERVIEW OF SMWSA PROJECT

1.2 Scope of this report

Parklife Metro D&C have been issued an Environment Protection Licence (EPL No. 21807) from the NSW Environment Protection Authority (EPA) for the SMWSA SSTOM Works. The EPL applies to the works approved under the Infrastructure Approval SSI-10051 associated with the delivery of the off-airport portion of the SMWSA SSTOM Works, as detailed in Table 1. This EPL Monitoring Report provides the results of all pollution monitoring required to be measured or monitored by the licensee of EPL 21807 within the reporting period as required by Section 66 of the *Protection of the Environment Operations Act 1997* (POEO Act) and with reference to EPA Publication *Requirements for publishing pollution monitoring data* (Environment Protection Authority, 2013).

TABLE 1 LICENCE DETAILS

Licence Details	
Number	21807
Copy of Licence	Environment & Heritage POEO Licences, Application and Notice Detail (nsw.gov.au)
Anniversary Date	20-July
Licensee	WEBUILD S.P.A
Premises	SYDNEY METRO WESTERN SYDNEY AIRPORT SSTOM PACKAGE FOOTPRINT SYDNEY METRO WESTERN SYDNEY AIRPORT-STATIONS, SYSTEMS, TRAINS, OPERATION & MAINTENANCE PACKAGE
Scheduled Activity	Railway activities – railway infrastructure construction

2 Reporting requirements

Under the POEO Act, holders of environment protection licences (licensees) must publish or make pollution monitoring data available to members of the public.

The POEO Act Section 66 requires:

“Conditions requiring monitoring, certification or provision of information, and related offences

(1) Monitoring The conditions of a licence may require—

(a) monitoring by the holder of the licence of the activity or work authorised, required or controlled by the licence, including with respect to—

(i) the operation or maintenance of premises or plant, and

(ii) discharges from premises, and

(iii) relevant ambient conditions prevailing on or outside premises, and

(iv) anything required by the conditions of the licence, and

(b) the provision and maintenance of appropriate measuring and recording devices for the purposes of that monitoring, and

(c) the analysis, reporting and retention of monitoring data.

(2) False or misleading information A holder of a licence who supplies information, or on whose behalf information is supplied, to the appropriate regulatory authority under the conditions of the licence is guilty of an offence if the information is false or misleading in a material respect.”

The primary objective of the EPL Monitoring Report is that members of the public have access to the results of all pollution monitoring (which a licence specifies must be carried out) in a way that is meaningful to them.

The monitoring data that must be published and/or made available on request is any data that is obtained as a result of a monitoring condition on a licence that relates to air, water (surface or groundwater), noise and/or land pollution. The data to be published or provided is limited to data that relates to pollutants generated, discharged or emitted from the licensed premises.

The data is provided in tabular format that is easy for the general public to understand. Tables definitively display raw data values, while graphs and charts are useful for overviews and visualisation of long-term trends. Raw data will be provided upon request.

This EPL Monitoring Report will provide explanations as to why data may appear to be missing, which may be due to there being no discharge or the level of pollutant being below the detection level of the measurement instrument.

It's possible from time to time that incorrect data may get published in good faith. As soon as practicable after the licensee becomes aware that the published pollution monitoring data is incorrect or misleading, licensees must then publish a correction log to correct this data that is incorrect or misleading.

Table 2 provides a summary of the monitoring requirements of EPL 21807.

TABLE 2 EPL 21807 MONITORING REQUIREMENTS

EPL Condition	Requirement	Report Reference
Weather		
M5.1	<p>The licensee must monitor and record temperature, wind direction, wind velocity and rainfall at either the project weather station, or through analysis of equivalent weather information obtained from the Australian Bureau of Meteorology. Monitoring must:</p> <ul style="list-style-type: none"> a) be representative of the premises; b) commence prior to any works that may cause sediment to leave the premises; and c) continue to be operated until soil disturbance activities cease at the premises and the site has been stabilised. 	Section 3.1 Appendix A
Noise		
L5.9	<p>Works outside of standard construction hours – Regulatory Requirements</p> <p>In undertaking any works and activities outside of standard construction hours under condition L5.8, the licensee must comply with the following:</p> <ul style="list-style-type: none"> a) Prepare a construction noise and vibration impact assessment in accordance with the Interim Construction Noise Guideline (DEC, 2009) that is to include: <ul style="list-style-type: none"> i. a description of the proposed works and activities outside of standard construction hours; ii. predictions of LAeq (15 minute) dB noise levels at noise sensitive receivers from these works and activities, where noise levels are predicted to be greater than those permitted under condition L5.3; and iii. a monitoring plan to validate the noise predictions, based on monitoring at the boundary of representative sensitive receivers during noise generating activities that are representative of the works and activities, including during the period/s predicted to have the highest noise level impacts. b) Undertake noise monitoring in accordance with the monitoring plan required by condition L5.9(a)(iii). 	Section 3.2 Appendix B

L5.10	<p>St Marys Station, Orchard Hills Station and Bradfield Station - Out of Hours Concrete Works Concrete works associated with station box construction at St Marys Station, Orchard Hills Station and Bradfield Station, including concrete pouring, finishing and cleaning, are permitted to be undertaken outside of standard construction hours specified in L5.1 provided that:</p> <p>a) Works are required to achieve compliance with overarching project technical requirements,</p> <p>b) Works had already begun within a reasonable time prior to end of standard construction hours,</p> <p>c) Out of Hours (OOH) works are undertaken from 5am to 7am and 6pm to 12am (midnight), Monday to Friday and 6am to 8am and 1pm to 6pm on Saturday,</p> <p>d) Station box base slab and wall concreting activities and supporting formwork and reinforcement activities are permitted to occur up to 12am (midnight) Monday to Friday a total of 12 times per month until all base slabs and wall pours are completed,</p> <p>e) Station box base slab and wall concreting activities and supporting formwork and reinforcement activities (e.g. using concrete pump, vibrators, concrete trucks, etc) must be completed before 12am (midnight) on Monday to Friday,</p> <p>f) All other concreting activities (e.g. using concrete pump, vibrators, concrete trucks, etc) must be completed before 10pm on Monday to Friday,</p> <p>g) Concrete finishing works (e.g. power floats, hand tools) must be completed before 12am (midnight) on Monday to Friday,</p> <p>h) The licensee is required to undertake noise monitoring in accordance with condition L5.9(b),</p> <p>i) The licensee is required to undertake noise monitoring on a monthly basis at each Station and additionally monitor the first three instances of OOH concrete works at each Station:</p> <ol style="list-style-type: none"> 1. commencing prior to 7am, and 2. extending past 10pm <p>j) The licensee is required to provide the EPA with a Noise Monitoring Report within 30 days of the end of each month,</p> <p>k) Works are permitted to occur until 31 May 2026.</p>	Section 3.2 Appendix B
L5.11	<p>St Marys, Orchard Hills and Bradfield Station sites - Out of Hours Precast Concrete Beam Installation Installation Precast beam installation for station box construction at St Marys, Orchard Hills and Bradfield Station sites is permitted to be undertaken outside of standard construction hours specified in L5.1, provided that:</p> <p>a) Works are required to achieve compliance with project requirements for unloading oversize/overmass precast beam deliveries and site safety requirements,</p> <p>b) Works and activities are undertaken from 12am (midnight) to 7am, Monday to Friday nights,</p> <p>c) The licensee is required to undertake noise monitoring in accordance with condition L5.9(b),</p> <p>d) The licensee is required to undertake noise monitoring at each Station on a monthly basis, and additionally monitor:</p> <ol style="list-style-type: none"> 1. the first two instances of OOH concrete beam installation at each Station, and 2. the first two instances of OOH concrete beam installation at each Station that occurs concurrently with activities permitted under Condition L5.10. <p>e) The licensee is required to provide the EPA with a Noise Monitoring Report within 30 days of the end of each month,</p> <p>f) Works are permitted to occur until 31 May 2026.</p>	Section 3.2 Appendix B

L5.12	<p>Stabling and Maintenance Facility - Out of Hours Concrete Works Concrete works associated with Maintenance & Administration and Operational Control Centre buildings at the Stabling and Maintenance Facility, including concrete pouring, finishing, and cleaning, are permitted to be undertaken outside of standard construction hours specified in L5.1 provided that:</p> <p>a) Works are required to achieve compliance with overarching project technical requirements,</p> <p>b) Works had already begun within a reasonable time prior to end of standard construction hours,</p> <p>c) Out of Hours works (OOH) are undertaken from 5am to 7am and 6pm to 12am (midnight), Monday to Friday, and 6am to 8am, and 1pm - 6pm on Saturday,</p> <p>d) Base slab concreting activities and supporting formwork and reinforcement activities must be completed before 12am (midnight) Monday to Friday,</p> <p>e) Base slab concreting activities and supporting formwork and reinforcement activities are permitted to occur up to 12am (midnight) Monday to Friday a total of 12 times per month until base slabs are completed,</p> <p>f) All other concreting activities (e.g. using concrete pump, vibrators, concrete trucks, etc) must be completed before 10pm on Monday to Friday,</p> <p>g) Concrete finishing works (e.g. power floats, hand tools) must be completed before 12am (midnight) on Monday to Friday,</p> <p>h) The licensee is required to undertake noise monitoring in accordance with L5.9(b),</p> <p>i) The licensee is required to undertake noise monitoring on a monthly basis and additionally during the first three instances of OOH concrete works:</p> <ol style="list-style-type: none"> 1. commencing prior to 7am, and 2. extending past 10pm. <p>j) The licensee is required to provide the EPA with a Noise Monitoring Report within 30 days of the end of each month,</p> <p>k) Works are permitted to occur until 31 March 2026.</p>	Section 3.2 Appendix B
L5.13	<p>Orchard Hills Station site - Out of Hours Concrete Batch Plant Operation The concrete batch plant located at the Orchard Hills site is permitted to operate outside of standard construction hours specified in L5.1 provided that:</p> <p>a) Operation of the plant is required to achieve compliance with overarching project technical requirements of large concrete pours permitted by condition L5.10 and L5.12</p> <p>b) Concrete works had already begun within a reasonable time prior to end of standard construction hours,</p> <p>c) Out of Hours (OOH) works are undertaken from 5am to 7am and 6pm to 10pm Monday to Friday, and 6am to 8am and 1pm to 6pm on Saturday,</p> <p>d) The licensee is required to undertake noise monitoring in accordance with condition L5.9(b),</p> <p>e) The licensee is required to undertake noise monitoring on a monthly basis and additionally monitor the first three instances of OOH operation of the concrete batch plant:</p> <ol style="list-style-type: none"> 1. commencing prior to 7am, and 2. extending past 8pm <p>f) The licensee is required to provide the EPA with a Noise Monitoring Report within 30 days of the end of each month,</p> <p>g) Works are permitted to occur until 31 May 2026.</p>	Section 3.2 Appendix B

L5.14	<p>Works outside standard construction hours - 24-hour works</p> <p>a) The following works are permitted to be undertaken 24 hours a day, 7 days per week for activities at the St Marys Station Site, Claremont Meadows services shaft site, Orchard Hills Station site, Bringelly services shaft site, and Bradfield Station site:</p> <ol style="list-style-type: none"> i. Tunnel and underground station box fit out works and ancillary surface support works ii. Haulage and delivery of materials to the Claremont Meadows services shaft site and Bringelly services shaft site. <p>b) The licensee is required to undertake attended noise monitoring:</p> <ol style="list-style-type: none"> 1. on the first two occasions of 24-hour works at each site: <ol style="list-style-type: none"> i. St Marys Station site, ii. Claremont Meadows services shaft site, iii. Orchard Hills Station site, iv. Bringelly services shaft site, v. Bradfield Station site, and 2. noise monitoring must occur in the night time period. 3. the licensee is required to provide the EPA with a Noise Monitoring Report within 30 days of the end of the month in which noise monitoring was undertaken. 	
L5.15	<p>Aluminothermic Welding and Rail Adjustments associated with rail installation at the Stabling and Maintenance facility, including rail cutting, riser removal and shearing and grinding of weld, are permitted to be undertaken outside of standard construction hours specified in L5.1 provided that:</p> <p>a) Works are required to achieve compliance with overarching project technical requirements,</p> <p>b) Works are commenced in the evening work period as soon as technically feasible within the required temperature constraints,</p> <p>c) Out of Hours (OOH) works are undertaken from 6pm to 3am Monday to Friday (completed by 3am Saturday morning),</p> <p>d) The licensee is required to undertake noise monitoring:</p> <ol style="list-style-type: none"> i) on a monthly basis and during the first three aluminothermic welding and rail adjustment occasions; and ii) provide the EPA with a Noise Monitoring Report within 30 days of the end of the month in which monitoring occurred, <p>e) Works are permitted to occur until 31 March 2026.</p>	Not triggered
M4.4	<p>The licensee must undertake noise and vibration monitoring as directed by an authorised officer of the EPA. Where the monitoring is requested to take place on private land (for example a residential property) the licensee must request permission to access the premises in advance and keep a record of permission requests and responses. If a licensee is unable to obtain permission, the licensee must undertake the monitoring at an indicative location where possible and they must provide the response (including any nil response) to the EPA.</p>	Not triggered
<p>Community Agreements</p> <p>The licensee may work outside standard construction hours (as defined in L5.1) in circumstances other than those permitted under conditions L5.3, L5.4, or any other condition of the licence, subject to the condition outlined Section E1.</p>		
E1.4	<p>A noise validation monitoring plan must be submitted to the EPA for approval as part of the community agreement documentation prior to any OOHW occurring.</p>	Section 3.2 Appendix B

<p>E1.5</p>	<p>Validation monitoring must be undertaken for any OOHW that are the approved under condition E1.1 and must:</p> <ul style="list-style-type: none"> a) be undertaken in accordance with the monitoring plan prepared under condition E1.4; b) be performed by a Competent Person; c) be performed on at least the first 2 occasions (day, evening, nights) where OOHW will be undertaken and are likely to impact Noise Sensitive Receivers; d) be performed on any other occasion (day, evening, night) where the nature of the works is likely to cause greater noise impacts than the first 2 occasions; e) be representative of the impacts in terms of monitoring locations, time and duration of measurements; and f) be recorded and provided to an EPA officer upon request. 	<p>Section 3.2 Appendix B</p>
<p>Water</p>		

P1.1

The following points referred to in the table are identified in this licence for the purposes of the monitoring and/or the setting of limits for discharges of pollutants to water from the point.

Section
3.3.2
Table 5

EPA Identification no	Type of Monitoring Point	Type of Discharge Point	Location Description
1	Discharge and Monitoring	Discharge and Monitoring	The outlet of the sediment basin on the Bradfield site discharging to Thompson Creek referred to in Condition P1.2
2	Discharge and Monitoring	Discharge and Monitoring	The outlet of the water treatment plant on the St Marys site discharging to South Creek
3	Discharge and Monitoring	Discharge and Monitoring	The outlet of the sediment basin on the Orchard Hills site discharging to an Unnamed Creek (tributary of South Creek) referred to in Condition P1.2
4	Discharge and Monitoring	Discharge and Monitoring	The outlet of the water treatment plant on the Bradfield site discharging to Thompson Creek
5	Discharge and Monitoring	Discharge and Monitoring	The outlet of the sediment basin at the Stabling and Maintenance Facility site discharging to Blaxland Creek referred to in Condition P1.2
6	Discharge and Monitoring	Discharge and Monitoring	The outlet of the sediment basin discharging to Cosgroves Creek referred to in Condition P1.2
7	Discharge and Monitoring	Discharge and Monitoring	The outlet of the sediment basin on Orchard Hills site discharging to South Creek referred to in Condition P1.2
8	Discharge and Monitoring	Discharge and Monitoring	The outlet of the sediment basin near Elizabeth Drive discharging to Badgerys Creek referred to in Condition P1.2
9	Discharge and Monitoring	Discharge and Monitoring	The outlet of the sediment basin at the Claremont Meadows site discharging to local stormwater referred to in Condition P1.2.
10	Discharge and Monitoring	Discharge and Monitoring	The outlet of the sediment basin at the Claremont Meadows site discharging to local stormwater referred to in Condition P1.2.
11	Discharge and Monitoring	Discharge and Monitoring	The outlet of the sediment basin discharging to an unnamed tributary of Blaxland Creek referred to in Condition P1.2.
12	Discharge and Monitoring	Discharge and Monitoring	The outlet of the sediment basin on the Stabling and Maintenance Facility site discharging to Blaxland Creek referred to in Condition P1.2
13	Discharge and Monitoring	Discharge and Monitoring	The outlet of the sediment basin located south of Patons Lane discharging to an unnamed tributary of South Creek referred to in Condition P1.2
14	Discharge and Monitoring	Discharge and Monitoring	The outlet of the sediment basin at the Bringelly site discharging to Badgerys Creek referred to in Condition P1.2.
15	Discharge and Monitoring	Discharge and Monitoring	The outlet of the sediment basin near Luddenham Station

			discharging to an unnamed tributary of South Creek referred to in Condition P1.2
16	Discharge and Monitoring	Discharge and Monitoring	The outlet of the sediment basin on the Linewide North site discharging to Blaxland Creek referred to in Condition P1.2
17	Discharge and Monitoring	Discharge and Monitoring	The outlet of the sediment basin on the Bradfield site discharging to Thompson Creek referred to in Condition P1.2

M2.2	Water and/or Land Monitoring Requirements POINT 1, 3, 5, 6, 7, 8, 9, 10, 11, 12, 13, 14, 15, 16, 17	Section 3.3.2 Appendix C																																															
	<table border="1"> <thead> <tr> <th>Pollutant</th> <th>Unit of measure</th> <th>Frequency</th> <th>Sampling Method</th> </tr> </thead> <tbody> <tr> <td>Oil and Grease</td> <td>Visible</td> <td>Special Frequency 1</td> <td>Visual inspection</td> </tr> <tr> <td>pH</td> <td>pH</td> <td>Special Frequency 1</td> <td>Probe</td> </tr> <tr> <td>Turbidity</td> <td>nephelometric turbidity units</td> <td>Special Frequency 1</td> <td>Probe</td> </tr> </tbody> </table>		Pollutant	Unit of measure	Frequency	Sampling Method	Oil and Grease	Visible	Special Frequency 1	Visual inspection	pH	pH	Special Frequency 1	Probe	Turbidity	nephelometric turbidity units	Special Frequency 1	Probe																															
	Pollutant		Unit of measure	Frequency	Sampling Method																																												
	Oil and Grease		Visible	Special Frequency 1	Visual inspection																																												
pH	pH	Special Frequency 1	Probe																																														
Turbidity	nephelometric turbidity units	Special Frequency 1	Probe																																														
POINT 2	<table border="1"> <thead> <tr> <th>Pollutant</th> <th>Units of measure</th> <th>Frequency</th> <th>Sampling Method</th> </tr> </thead> <tbody> <tr> <td>Aluminium</td> <td>milligrams per litre</td> <td>Daily during any Grab sample discharge</td> <td>Grab sample</td> </tr> <tr> <td>Ammonia</td> <td>milligrams per litre</td> <td>Daily during any Grab sample discharge</td> <td>Grab sample</td> </tr> <tr> <td>Chromium (VI) Compounds</td> <td>milligrams per litre</td> <td>Daily during any discharge</td> <td>Grab sample</td> </tr> <tr> <td>Copper</td> <td>milligrams per litre</td> <td>Daily during any discharge</td> <td>Grab sample</td> </tr> <tr> <td>Electrical conductivity</td> <td>microsiemens per centimetre</td> <td>Daily during any discharge</td> <td>Grab sample</td> </tr> <tr> <td>Nitrogen (total)</td> <td>milligrams per litre</td> <td>Daily during any discharge</td> <td>Grab sample discharge</td> </tr> <tr> <td>Oil and Grease</td> <td>Visible</td> <td>Daily during any discharge</td> <td>Visual Inspection</td> </tr> <tr> <td>pH</td> <td>pH</td> <td>Daily during any discharge</td> <td>Probe</td> </tr> <tr> <td>Phosphorus (total)</td> <td>milligrams per litre</td> <td>Daily during any discharge</td> <td>Grab sample</td> </tr> <tr> <td>TSS</td> <td>milligrams per litre</td> <td>Daily during any discharge</td> <td>Grab sample</td> </tr> <tr> <td>Zinc</td> <td>milligrams per litre</td> <td>Daily during any discharge</td> <td>Grab sample</td> </tr> </tbody> </table>	Pollutant	Units of measure	Frequency	Sampling Method	Aluminium	milligrams per litre	Daily during any Grab sample discharge	Grab sample	Ammonia	milligrams per litre	Daily during any Grab sample discharge	Grab sample	Chromium (VI) Compounds	milligrams per litre	Daily during any discharge	Grab sample	Copper	milligrams per litre	Daily during any discharge	Grab sample	Electrical conductivity	microsiemens per centimetre	Daily during any discharge	Grab sample	Nitrogen (total)	milligrams per litre	Daily during any discharge	Grab sample discharge	Oil and Grease	Visible	Daily during any discharge	Visual Inspection	pH	pH	Daily during any discharge	Probe	Phosphorus (total)	milligrams per litre	Daily during any discharge	Grab sample	TSS	milligrams per litre	Daily during any discharge	Grab sample	Zinc	milligrams per litre	Daily during any discharge	Grab sample
Pollutant		Units of measure	Frequency	Sampling Method																																													
Aluminium		milligrams per litre	Daily during any Grab sample discharge	Grab sample																																													
Ammonia		milligrams per litre	Daily during any Grab sample discharge	Grab sample																																													
Chromium (VI) Compounds		milligrams per litre	Daily during any discharge	Grab sample																																													
Copper		milligrams per litre	Daily during any discharge	Grab sample																																													
Electrical conductivity		microsiemens per centimetre	Daily during any discharge	Grab sample																																													
Nitrogen (total)		milligrams per litre	Daily during any discharge	Grab sample discharge																																													
Oil and Grease		Visible	Daily during any discharge	Visual Inspection																																													
pH		pH	Daily during any discharge	Probe																																													
Phosphorus (total)		milligrams per litre	Daily during any discharge	Grab sample																																													
TSS		milligrams per litre	Daily during any discharge	Grab sample																																													
Zinc		milligrams per litre	Daily during any discharge	Grab sample																																													
POINT 4	<table border="1"> <thead> <tr> <th>Pollutant</th> <th>Units of measure</th> <th>Frequency</th> <th>Sampling Method</th> </tr> </thead> <tbody> <tr> <td>Aluminium</td> <td>milligrams per litre</td> <td>Monthly during discharge</td> <td>Grab sample</td> </tr> <tr> <td>Ammonia</td> <td>milligrams per litre</td> <td>Monthly during discharge</td> <td>Grab sample</td> </tr> <tr> <td>Chromium (VI) Compounds</td> <td>milligrams per litre</td> <td>Monthly during discharge</td> <td>Grab sample</td> </tr> <tr> <td>Copper</td> <td>milligrams per litre</td> <td>Monthly during discharge</td> <td>Grab sample</td> </tr> <tr> <td>Electrical conductivity</td> <td>microsiemens per centimetre</td> <td>Monthly during discharge</td> <td>Grab sample</td> </tr> <tr> <td>Nitrogen (total)</td> <td>milligrams per litre</td> <td>Monthly during discharge</td> <td>Grab sample</td> </tr> <tr> <td>Oil and Grease</td> <td>Visible</td> <td>Monthly during discharge</td> <td>Visual Inspection</td> </tr> <tr> <td>pH</td> <td>pH</td> <td>Monthly during discharge</td> <td>Probe</td> </tr> <tr> <td>Phosphorus (total)</td> <td>milligrams per litre</td> <td>Monthly during discharge</td> <td>Grab sample</td> </tr> <tr> <td>TSS</td> <td>milligrams per litre</td> <td>Monthly during discharge</td> <td>Grab sample</td> </tr> <tr> <td>Zinc</td> <td>milligrams per litre</td> <td>Monthly during discharge</td> <td>Grab sample</td> </tr> </tbody> </table>	Pollutant	Units of measure	Frequency	Sampling Method	Aluminium	milligrams per litre	Monthly during discharge	Grab sample	Ammonia	milligrams per litre	Monthly during discharge	Grab sample	Chromium (VI) Compounds	milligrams per litre	Monthly during discharge	Grab sample	Copper	milligrams per litre	Monthly during discharge	Grab sample	Electrical conductivity	microsiemens per centimetre	Monthly during discharge	Grab sample	Nitrogen (total)	milligrams per litre	Monthly during discharge	Grab sample	Oil and Grease	Visible	Monthly during discharge	Visual Inspection	pH	pH	Monthly during discharge	Probe	Phosphorus (total)	milligrams per litre	Monthly during discharge	Grab sample	TSS	milligrams per litre	Monthly during discharge	Grab sample	Zinc	milligrams per litre	Monthly during discharge	Grab sample
Pollutant		Units of measure	Frequency	Sampling Method																																													
Aluminium		milligrams per litre	Monthly during discharge	Grab sample																																													
Ammonia		milligrams per litre	Monthly during discharge	Grab sample																																													
Chromium (VI) Compounds		milligrams per litre	Monthly during discharge	Grab sample																																													
Copper		milligrams per litre	Monthly during discharge	Grab sample																																													
Electrical conductivity		microsiemens per centimetre	Monthly during discharge	Grab sample																																													
Nitrogen (total)		milligrams per litre	Monthly during discharge	Grab sample																																													
Oil and Grease		Visible	Monthly during discharge	Visual Inspection																																													
pH		pH	Monthly during discharge	Probe																																													
Phosphorus (total)		milligrams per litre	Monthly during discharge	Grab sample																																													
TSS		milligrams per litre	Monthly during discharge	Grab sample																																													
Zinc		milligrams per litre	Monthly during discharge	Grab sample																																													
M2.3	<p>For the purposes of Condition M2.2 and the Table thereto, 'Special Frequency 1' means:</p> <p>a) less than 24 hours prior to a controlled discharge and daily for any continued controlled discharge, when it is safe to do so; and</p> <p>b) when rainfall causes a discharge from a sediment basin which has not been emptied within the design management period following cessation of a rainfall event, when it is safe to do so.</p>	Section 3.3.2																																															

E2.1	<p>The licensee must undertake surface water monitoring of receiving waterways at locations upstream, downstream and adjacent to discharge points 2 and 4 identified in Condition P1.1 at fortnightly intervals and at least once during each discharge event. This monitoring must be undertaken for a minimum of 3 months:</p> <p>a) from the date that point 2 was added to the licence; and</p> <p>b) from the date that discharge from point 4 commences.</p> <p>Surface water monitoring results must include:</p> <p>a) quality and quantity of all parameters that are identified in the table in M2.2 for discharge points 2 and 4; and</p> <p>b) results must be submitted to the EPA no more than 2 weeks after each monitoring event has occurred for a minimum of 3 months:</p> <p>i. from the date that point 2 was added to the licence; and</p> <p>ii. from the date that discharge from point 4 commences.</p>	Section 3.3.1
E3.1	<p>Water Treatment Plant (WTP) Performance Reporting</p> <p>A) The licensee must undertake water quality sampling of all discharges from the WTP (as identified as Point 2 and 4 under condition P1.1) and submit to the EPA a WTP Performance Report within 10 business days of each sample result being taken. Sampling must be undertaken:</p> <p>i) daily during discharge</p> <p>ii) as per condition M2.2, following this sampling frequency or as directed by the EPA.</p>	Not Triggered
Additional Monitoring Conditions		
M4.5	<p>The licensee must undertake monitoring, sampling, video recording and/or take photographs:</p> <p>a) if the EPA or licensee reasonably suspects that an event has occurred at the premises or in connection with the carrying out of the activities that has caused, is causing, is likely to cause or has the potential to cause material harm to the environment (whether the harm occurs on or off premises to which the license applies);</p> <p>b) as soon as practicable; and</p> <p>c) as directed by an authorised officer.</p>	Not triggered

3 Monitoring

This section presents summaries of the monitoring completed in the reporting period from 1 March 2026 to 31 March 2026.

Detailed monitoring results for each program are presented in the Appendices.

3.1 Weather Monitoring

Meteorological observations were captured using the Bureau of Meteorology Weather Stations - Badgerys Creek (Station 067108) and Penrith Lakes (Station 067113). Meteorological data for the month of March can be found within Appendix A.

Penrith Lakes Station reported 6.2 mm total rainfall for the reporting period, with 1 days exceeding 1mm, no days exceeding 10mm, and no days exceeding 20mm of rain.

During the reporting period, 10 days recorded wind gusts greater than 25km/hr, no days where the maximum wind gust recorded was greater than 50 km/h, and no days where the maximum wind gust recorded was greater than 60 km/hr.

Badgerys Creek Station reported 10 mm total rainfall for the reporting period, with 2 days exceeding 1mm, no days exceeding 10mm, and no days exceeding 20mm of rain.

During the reporting period, 15 days recorded wind gusts greater than 25km/hr, 1 day where the maximum wind gust recorded was greater than 50 km/h, and no days where the maximum wind gust recorded was greater than 60 km/hr.

Detailed weather observation records for the reporting period are presented in Appendix A.

This information is used daily on site to assess daily activities and consider mitigation measures as required.

TABLE 3 WEATHER SUMMARY AND TRIGGER WEATHER EVENTS FOR REPORTING PERIOD

Weather Event (Penrith Lakes Station)	Observation	Weather Event (Badgerys Creek Station)	Observation
Minimum temperature (°C)	7.4	Minimum temperature (°C)	5.2
Maximum temperature (°C)	32.6	Maximum temperature (°C)	31.9
Total rainfall (mm)	6.2	Total rainfall (mm)	10
Number of days with rain (>1mm)	1	Number of days with rain (>1mm)	2
Number of days with rain (>10mm)	0	Number of days with rain (>10mm)	0
Number of days with rain (>20mm)	0	Number of days with rain (>20mm)	0
Number of days with >25km/h wind gust	10	Number of days with >25km/h wind gust	15
Number of days with >50km/h wind gust	0	Number of days with >50km/h wind gust	1
Number of days with >60km/h wind gust	0	Number of days with >60km/h wind gust	0

3.2 Noise and Vibration Monitoring

Noise monitoring is required under Conditions L5.9, L5.10, L5.11, L5.12, L5.13, L5.14 and E1.5 to validate noise predications for work undertaken outside of standard construction hours in accordance with the construction noise and vibration assessment and monitoring plan. All noise monitoring performed under EPL (21807) will be included in Appendix B.

TABLE 4 SUMMARY OF NOISE MONITORING FOR REPORTING PERIOD

Date	Monitoring Location	Attended / Continuous	Description
22/04/2026	145 Badgerys Creek Road, Bradfield	Attended	Residence west of Bradfield Station
23/04/2026	4 Chesham Street, St Marys	Attended	House opposite St Marys Station

3.3 Water Monitoring

3.3.1 Surface water monitoring

As per Condition E2.1 fortnightly sampling is required for at least 3 months from the date Point 2 was added to the licence (30 November 2023). This period ended on 30 February 2024, and additional background monitoring was obtained through March and April. This monitoring is now complete.

Additionally, as per Condition E2.1 surface water monitoring will be conducted at discharge Point 4 at fortnightly intervals and at least once during each discharge event for a minimum of 3 months from the date that discharge from Point 4 commences. These water monitoring results will be presented in Appendix D accordingly.

3.3.2 Discharge to water

The discharge of water from sediment basins occurred at the following discharge point during the reporting period:

- SSTOM-017

The EPL discharge criteria apply to sediments basins identified in condition L2.4 of the approved EPL 21807. Basins and discharge points are summarised in Table 5. Monitoring results for March are included in Appendix C.

TABLE 5 MONITORING/DISCHARGE POINTS AND AREAS

ID	Construction Status	EPA ID	Easting	Northing	Description of location of discharge point	Catchment name	Name of nearest waters	Direct discharge to waters	Date added to EPL
SSTOM-001	Not Active	1	290807.84	6243844.20	The outlet of the sediment basin on the Bradfield site discharging to Thompson Creek	South Creek	Thompsons Creek	Yes	14/11/2023
SSTOM-002	Not Active	2	294041.62	6261905.98	The outlet of the water treatment plant on the St Marys site at former Plaza	South Creek	South Creek	No	15/12/2023
SSTOM-003	Not active	3	291819.86	6258565.85	The outlet of the sediment basin on the Orchard Hills site discharging to an Unnamed Creek (tributary of South Creek)	South Creek	Blaxland Creek	No	14/02/2024
SSTOM-004	Not active	4	291447.72	6243909.96	The outlet of the water treatment plant on the Bradfield site discharging to Thompson Creek	South Creek	Thompsons Creek	No	15/05/2024
SSTOM-005	Not active	5	292112.47	6257621.18	The outlet of the sediment basin at the Stabling and Maintenance Facility site discharging to Blaxland Creek	South Creek	Blaxland Creek	No	28/08/2024
SSTOM-006	Not active	6	291092.66	6252180.95	The outlet of the sediment basin discharging to Cosgroves Creek	South Creek	Cosgrove Creek	No	04/09/2024
SSTOM-007	Not active	7	292065.7	6259303.9	The outlet of the sediment basin discharging to South Creek	South Creek	South Creek	No	15/11/2024
SSTOM-008	Not active	8	291981.6	6249912.7	The outlet of the sediment basin discharging to Badgerys Creek	Badgerys Creek	Badgerys Creek	No	4/12/2024
SSTOM-009	Not active	9	291981.6	6249912.7	The outlet of the sediment basin discharging to Claremont Creek	South Creek	Claremont Creek	No	16/01/2025
SSTOM-010	Not active	10	292018.2	6261255.3	The outlet of the sediment basin discharging to Claremont Creek	South Creek	Claremont Creek	No	16/01/2025

SSTOM-011	Not active	11	291965.4	6258444.4	The outlet of the sediment basin discharging to Badgerys Creek	South Creek	Badgerys Creek	No	16/01/2025
SSTOM-012	Not Active	12	291985.4	6257951.5	The outlet of the sediment basin discharging to Blaxland Creek	South Creek	Blaxland Creek	Yes	16/01/2025
SSTOM-013	Not Active	13	291528.1	6255484.1	The outlet of the sediment basin located south of Patons Lane to Unnamed Creek	South Creek	Unnamed Creek	No	23/01/2025
SSTOM-014	Not Active	14	289482.8	6245852.0	The outlet of the sediment basin at the Bringelly site discharging to Badgerys Creek.	South Creek	Badgerys Creek	Yes	23/01/2025
SSTOM-015	Not active	15	290913.5	6253487.3	The outlet of the sediment basin near Luddenham Station discharging to an unnamed tributary of South Creek	South Creek	South Creek	No	25/03/2025
SSTOM-016	Not Active	16	291749.9	6257486.0	The outlet of the sediment basin near Linewide (South Lansdown Road) Station discharging to Blaxland Creek	South Creek	Blaxland Creek	No	4/06/2025
SSTOM-017	Active	17	290808.06	6243841.41	The outlet of the sediment basin on the Bradfield site discharging to Thompson Creek referred to in Condition P1.2	South Creek	Thompson Creek	Yes	14/10/2025

Appendices

Appendix A Weather Observations – Penrith Lakes

TABLE 6 - MONTHLY WEATHER OBSERVATION TABLE (PENRITH LAKES)

Penrith, New South Wales April 2026 Daily Weather Observations



Australian Government
Bureau of Meteorology

Date	Day	Temps		Rain mm	Evap mm	Sun hours	Max wind gust			9am						3pm					
		Min	Max				Dirn	Spd	Time	Temp	RH	Cld	Dirn	Spd	MSLP	Temp	RH	Cld	Dirn	Spd	MSLP
		°C	°C					km/h	local	°C	%	eighths		km/h	hPa	°C	%	eighths		km/h	hPa
1	We	13.8	29.5	0.2			ENE	22	17:49	18.7	82		ESE	2		28.4	43		NNW	6	
2	Th	13.9	28.4	0			NE	20	12:42	18.3	89			Calm		27.6	43		ESE	4	
3	Fr	14.2	27.0	0			SE	24	14:59	17.7	90		S	7		24.1	67		SE	13	
4	Sa	17.7	19.6	0.6			S	20	07:22	18.4	80		SSW	9		18.9	79		WSW	6	
5	Su	15.3	23.8	4.0			ESE	26	15:26	17.6	87		SW	7		22.5	53		S	4	
6	Mo	12.2	20.4	0			NNE	11	11:47	16.1	88		NNE	4		19.4	77		W	2	
7	Tu	12.7	32.6	0			W	41	14:22	18.4	84		SE	2		31.2	35		W	15	
8	We	14.2	29.2	0			N	13	13:58	22.6	72		NE	4		28.0	43		SW	4	
9	Th	15.5	31.5	0			S	17	23:59	20.7	75		S	2		31.0	38		NE	9	
10	Fr	16.2	31.0	0.2			N	30	13:41	23.3	71		NNW	6		29.7	45		NNW	9	
11	Sa	17.6	26.2	0			W	33	16:37	21.6	46		S	9		24.0	27		W	20	
12	Su	9.2	21.9	0			WSW	35	13:49	17.0	49		SSW	9		20.9	33		WSW	19	
13	Mo	7.9	23.5	0.2			S	28	14:49	16.8	54			Calm		23.1	38		S	15	
14	Tu	8.5	25.6	0.6			NE	13	15:51	16.6	72		NNW	6		25.4	38		NW	4	
15	We	9.2	26.6	0			ESE	15	17:30	16.9	74		N	4		25.7	41		NNE	7	
16	Th	11.0	28.4	0			SSE	13	22:15	17.8	77		N	4		25.0	50		S	6	
17	Fr	8.7	30.3	0			SE	33	18:50	16.1	74			Calm		29.3	28		W	11	
18	Sa	7.9	22.6	0.2			ESE	22	16:13	15.5	58		WNW	2		22.1	26		E	6	
19	Su	7.4	23.3	0			E	20	17:00	15.4	70		WSW	4		22.6	39		SE	4	
20	Mo	7.4	23.5	0			SSE	28	11:02	15.5	77			Calm		23.0	43		SE	13	
21	Tu	13.5	22.4	0			SSW	35	08:56	18.9	60		SSW	17		21.9	52		S	13	
22	We	14.4	23.7	0.2			SSE	30	15:08	18.1	69		SSW	7		23.4	45		NNE	4	
23	Th	10.7	22.9	0			SE	20	16:43	18.5	67		SSW	4		20.8	51		S	7	
24	Fr	12.5	25.4	0			E	19	15:47	17.6	68			Calm		22.5	52		SE	9	
25	Sa	11.2	26.4	0			NE	22	13:38	18.1	80		NNE	7		26.0	46		NNE	7	
26	Su	10.8	25.7	0			N	20	10:49	15.4	98		N	4		25.0	30		NNE	6	
27	Mo	8.0	26.1	0			N	17	13:18	14.4	81		SSE	2		25.8	33		NNW	4	
28	Tu	9.6	25.5	0			N	24	12:59	15.8	85		SSE	6		24.8	40		N	6	
29	We	10.1	26.5	0			E	19	16:15	15.3	86		S	2		26.1	42		WNW	4	
30	Th	13.2	26.3	0			NE	24	16:30	19.8	78			Calm		24.4	49		SSE	4	
Statistics for April 2026																					
Mean		11.8	25.9							17.8	74			4		24.8	44			8	
Lowest		7.4	19.6							14.4	46			Calm		18.9	26		W	2	
Highest		17.7	32.6	4.0			W	41		23.3	98		SSW	17		31.2	79		W	20	
Total				6.2																	

Observations were drawn from Penrith Lakes AWS (station 067113)

IDCJDW2111.202604 Prepared at 13:00 UTC on 7 May 2026
Copyright © 2026 Bureau of Meteorology
Users of this product are deemed to have read the information and accepted the conditions described in the notes at <http://www.bom.gov.au/climate/dwo/IDCJDW0000.pdf>

Weather Observations – Badgerys Creek

TABLE 7 - MONTHLY WEATHER OBSERVATION TABLE (BADGERYS CREEK)

Badgerys Creek, New South Wales April 2026 Daily Weather Observations



Australian Government
Bureau of Meteorology

Date	Day	Temps		Rain mm	Evap mm	Sun hours	Max wind gust			9am					3pm						
		Min °C	Max °C				Dirn	Spd km/h	Time local	Temp °C	RH %	Cld eighths	Dirn	Spd km/h	MSLP hPa	Temp °C	RH %	Cld eighths	Dirn	Spd km/h	MSLP hPa
1	We	12.7	29.0	0			E	22	17:04	22.9	63		NE	6	1024.7	27.6	45		NNE	7	1021.4
2	Th	12.6	28.2	0			ENE	24	15:03	19.9	88		SW	6	1024.6	27.3	45		NNE	7	1021.4
3	Fr	13.1	26.9	0			SSE	31	15:36	18.2	100		SW	6	1022.8	24.4	63		SE	17	1021.9
4	Sa	16.7	19.9	3.2			S	24	11:51	17.8	81		SSW	13	1026.6	19.8	70		S	9	1025.7
5	Su	13.9	23.0	5.8			ESE	30	15:32	17.6	84		SSW	11	1027.2	20.7	66		ESE	20	1023.5
6	Mo	10.1	20.3	0			N	15	16:27	15.9	91		SSE	2	1021.4	19.2	72		N	6	1016.9
7	Tu	9.6	31.9	0.2			W	31	15:21	22.2	68		NNE	6	1012.2	29.7	40		W	9	1008.8
8	We	14.5	29.2	0			ESE	20	17:30	19.1	79		SW	9	1016.0	28.5	37		SSW	4	1014.1
9	Th	14.4	30.5	0			WSW	20	23:28	23.5	62		NW	6	1017.5	29.7	40		N	11	1013.4
10	Fr	16.3	30.1	0			N	37	15:03	20.3	82		WNW	4	1013.5	28.0	48		NNE	17	1007.9
11	Sa	15.4	24.7	0			WSW	37	12:50	20.6	41		WSW	19	1009.4	23.7	30		W	17	1007.0
12	Su	6.2	20.6	0			WNW	54	09:38	15.3	54		WSW	7	1011.3	19.8	35		WSW	22	1009.7
13	Mo	9.9	23.2	0			WSW	31	00:01	17.4	46		SW	19	1018.2	22.3	37		SSW	9	1016.9
14	Tu	7.1	25.5	0			NNE	22	13:19	20.2	48		W	6	1021.3	24.6	34		ENE	4	1018.0
15	We	6.0	27.4	0			ESE	24	16:42	16.4	73		ESE	4	1020.0	25.9	36		NNE	4	1016.6
16	Th	8.4	27.8	0			W	13	19:09	17.4	73		SW	2	1019.4	27.1	38		NE	6	1013.9
17	Fr	7.2	28.8	0			SW	37	16:08	8.9	97		W	4	1013.4	28.2	33		NNE	2	1009.5
18	Sa	5.2	22.0	0			SE	24	16:07	17.4	45		SW	13	1019.5	19.2	43		SE	15	1017.7
19	Su	6.9	22.8	0			SSW	24	08:57	15.1	62		SW	15	1022.9	21.2	37		SE	11	1020.0
20	Mo	8.6	23.5	0			S	26	15:07	19.6	56		SW	13	1025.5	22.5	42		S	7	1023.4
21	Tu	12.5	22.3	0			SW	33	10:45	19.0	59		SW	19	1028.5	18.8	62		S	13	1026.2
22	We	11.9	22.8	0.6			S	30	14:12	17.3	73		SW	7	1027.8	20.9	50		SE	17	1026.1
23	Th	9.4	23.1	0.2			SSE	24	14:27	16.1	70		WSW	9	1029.5	21.8	46		S	9	1029.1
24	Fr	9.6	24.7	0			ENE	20	13:53	17.7	63		SW	11	1033.3	22.6	50		ENE	15	1030.7
25	Sa	9.5	25.6	0			NNE	28	12:58	18.3	76		E	4	1032.2	24.2	49		NNE	9	1026.7
26	Su	8.4	24.8	0			N	33	11:08	13.8	100		N	2	1027.2	23.7	36		N	7	1022.8
27	Mo	6.3	25.2	0			ENE	24	13:17	14.6	74			Calm	1025.4	24.3	39		N	9	1023.2
28	Tu	7.3	24.4	0			N	30	13:11	19.6	64		NW	2	1027.8	23.1	43		NNE	13	1024.2
29	We	6.8	25.9	0			ENE	22	15:56	19.8	60		SW	4	1029.5	25.2	39		NNE	7	1027.5
30	Th	13.0	26.4	0			ENE	28	16:54	19.5	76		SW	9	1031.7	25.2	45		NE	11	1028.0
Statistics for April 2026																					
Mean		10.3	25.3							18.0	70			7	1022.7	24.0	45			10	1019.7
Lowest		5.2	19.9							8.9	41			Calm	1009.4	18.8	30		NNE	2	1007.0
Highest		16.7	31.9	5.8			WNW	54		23.5	100		#	19	1033.3	29.7	72		WSW	22	1030.7
Total				10.0																	

Observations were drawn from Badgerys Creek AWS (station 067108)

IDCJDW2005.202604 Prepared at 13:00 UTC on 7 May 2026
Copyright © 2026 Bureau of Meteorology
Users of this product are deemed to have read the information and accepted the conditions described in the notes at <http://www.bom.gov.au/climate/dwo/IDCJDW0000.pdf>

Appendix B Noise Monitoring

TABLE 8 DETAILED NOISE MONITORING DATA

Date	Time	Construction Activity	Activity Location	Monitoring Location	NML (dBA)	Predicted (dBA)	Recorded LA _{eq(15min)} (dBA)	L _{Amax}	LA ₁₀	LA ₉₀	Exceedance of Predicted (dBA)	Exceedance of Predicted	Comments
22/04/2026	22:39	Pre-cast Install	BRD	145 Badgerys Creek Road, Bradfield	39	42	43.9	53.1	45.8	41.5	1.9	Yes	PLM Work was faintly audible and below background levels. Other noise sources included crickets in the surrounding area. Recorded noise levels were below predicted DNVIS levels.
23/04/2026	01:38	Pre-cast Install	STM	4 Chesham Street, St Marys	47	59	52.8	74.9	52	41.7	-6.2	Yes	PLM work was periodically audible with additional noise sources coming from traffic along Glossop Road. Recorded noise levels were below predicted DNVIS levels.

Appendix C Discharge to water

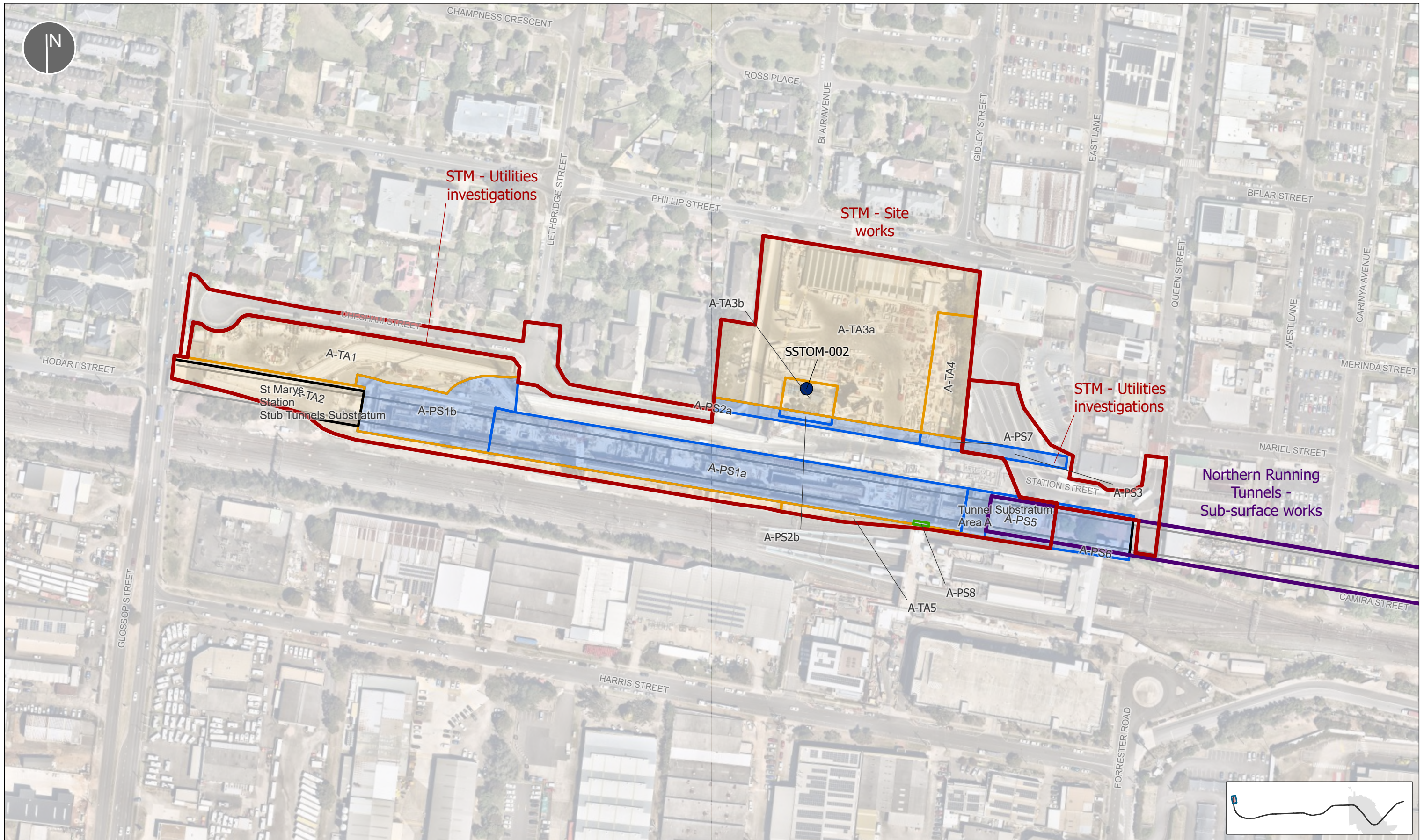
TABLE 9 WATER DISCHARGE TABLE

Discharge Monitoring Point ID	Type of Monitoring Point	Type of Discharge Point	Date	Discharge Permit No.	Oil and Grease (Visual Inspection)	pH (6.5-8.5)	Turbidity (50 NTU)
SSTOM-17	Sediment Basin	Discharge into stabilised spillway	04/03/2026	133	None	6.67	14.7

Appendix D Surface water monitoring

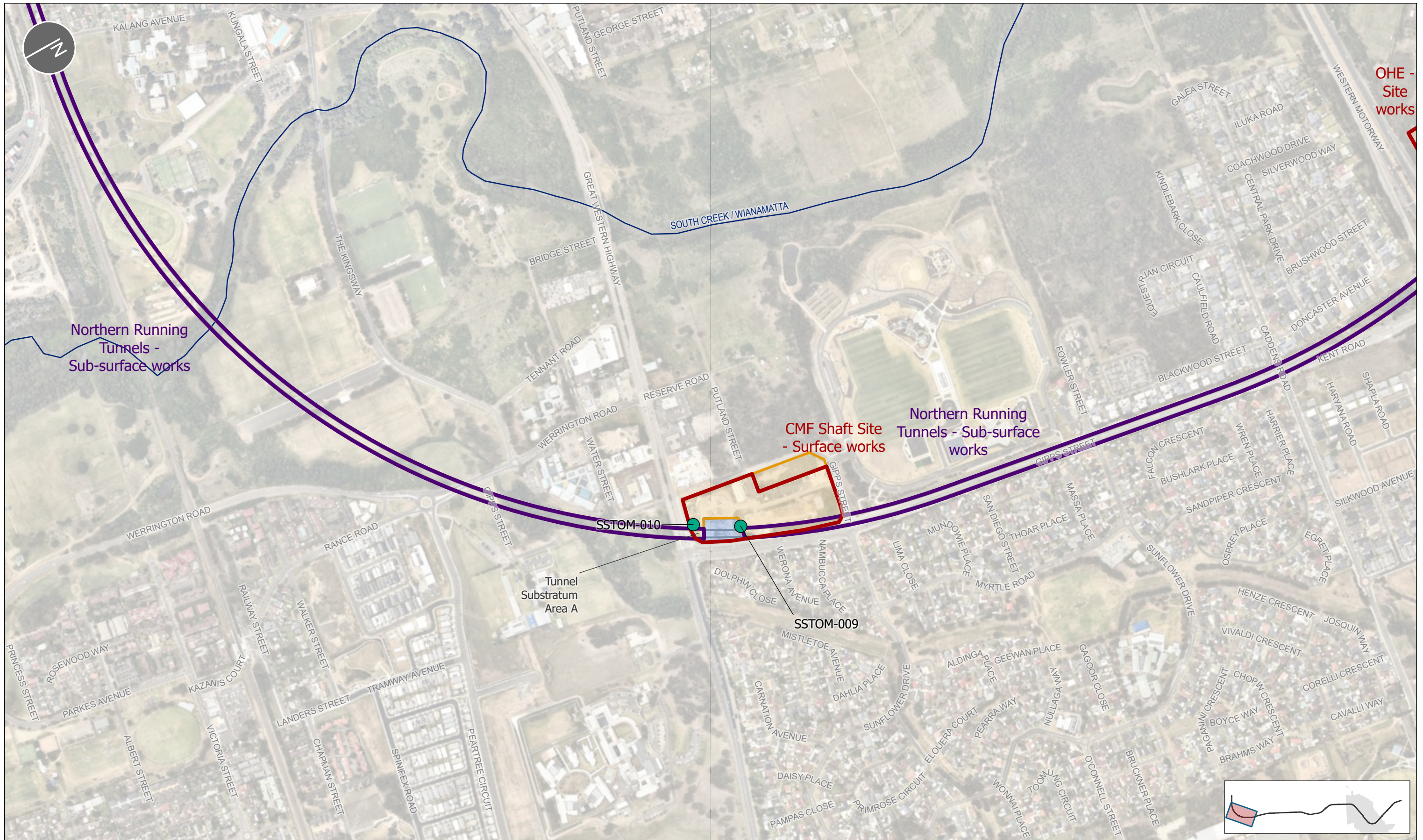
No surface water monitoring was conducted for this month's monitoring report. Any surface water monitoring conducted as part of Parklife Metro's EPL licence will be presented accordingly.

Appendix E Premise Maps – March



LEGEND				
Discharge Points	EPL Premise Boundary	Metro alignment	Site Access Schedule	Temporary Area
Water Treatment Plant	Surface works	Watercourse	Aerial Stratum	
	Sub-surface works	Western Sydney International boundary (WSP)	Project Site	
			Substratum	

		NOTES EPL Premise Boundary Map		<table border="1"> <thead> <tr> <th>REV</th> <th>DATE</th> <th>DESCRIPTION</th> </tr> </thead> <tbody> <tr><td>45</td><td>04.11.2025</td><td>Premise Map update</td></tr> <tr><td>46</td><td>17.11.2025</td><td>Premise Map update</td></tr> <tr><td>47</td><td>05.12.2025</td><td>Premise Map update</td></tr> <tr><td>48</td><td>16.01.2026</td><td>Premise Map update</td></tr> <tr><td>49</td><td>28.01.2026</td><td>Premise Map update</td></tr> <tr><td>50</td><td>03.03.2026</td><td>Premise Map update</td></tr> </tbody> </table>		REV	DATE	DESCRIPTION	45	04.11.2025	Premise Map update	46	17.11.2025	Premise Map update	47	05.12.2025	Premise Map update	48	16.01.2026	Premise Map update	49	28.01.2026	Premise Map update	50	03.03.2026	Premise Map update
REV	DATE	DESCRIPTION																								
45	04.11.2025	Premise Map update																								
46	17.11.2025	Premise Map update																								
47	05.12.2025	Premise Map update																								
48	16.01.2026	Premise Map update																								
49	28.01.2026	Premise Map update																								
50	03.03.2026	Premise Map update																								
TITLE EPL 21807 PREMISE BOUNDARY		PROJECT Sydney Metro – Western Sydney Airport - SSTM		CLIENT Sydney Metro																						
		SCALE 1:2,000	A3	DRAWN BY DD	APPROVED JB																					
SHEET 1 of 12		COORDINATE SYSTEM GDA2020 MGA Zone 56		REVIEW JB	DATE 03/03/2026																					
				MAP # SMWSASSM-PLD-1NL-ENV-GIS-000001_50	50																					



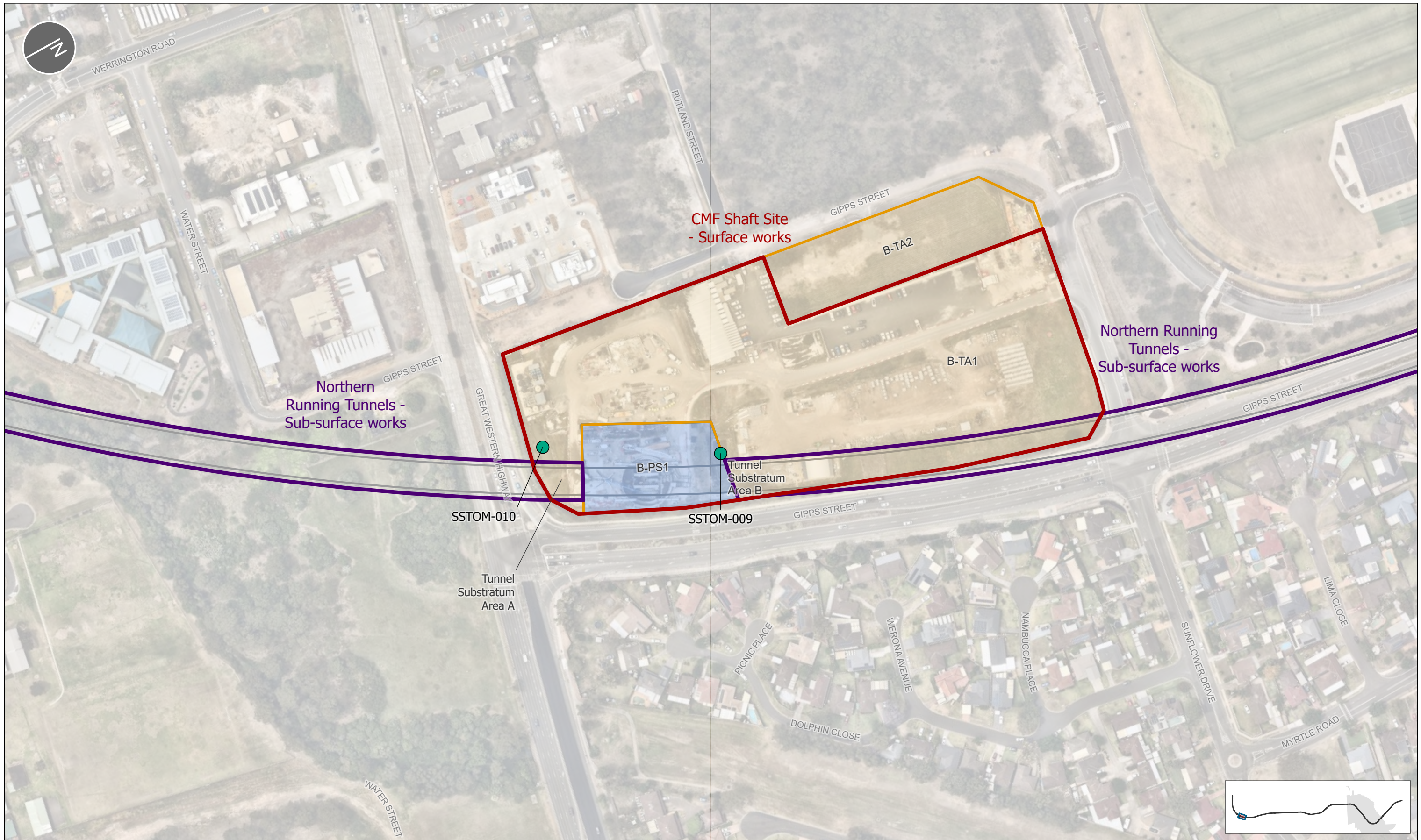
LEGEND			
Discharge Points	EPL Premise Boundary	Metro alignment	Site Access Schedule
● Temporary Sediment Basin	▭ Surface works	— Watercourse	▭ Project Site
	▭ Sub-surface works	▭ Western Sydney International boundary (WSP)	▭ Substratum
			▭ Temporary Area

TITLE
EPL 21807 PREMISE BOUNDARY

NOTES		
EPL Premise Boundary Map		
PROJECT	Sydney Metro – Western Sydney Airport - SSTOM	
SCALE	1:7,500	A3
SHEET	2 of 12	COORDINATE SYSTEM GDA2020 MGA Zone 56
DATE	03/03/2026	REVIEW JB

REV	DATE	DESCRIPTION
45	04.11.2025	Premise Map update
46	17.11.2025	Premise Map update
47	05.12.2025	Premise Map update
48	16.01.2026	Premise Map update
49	28.01.2026	Premise Map update
50	03.03.2026	Premise Map update

CLIENT	Sydney Metro
APPROVED	JB
MAP #	SMWSASSM-PLD-1NL-ENV-GIS-000001_50
DATE	03/03/2026
REVIEW	JB
MAP #	50

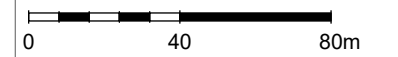


LEGEND

- | | | | |
|---|---|---|---|
| <p>Discharge Points</p> <ul style="list-style-type: none"> ● Temporary Sediment Basin | <p>EPL Premise Boundary</p> <ul style="list-style-type: none"> ▭ Surface works ▭ Sub-surface works | <p>Metro alignment</p> <ul style="list-style-type: none"> — Metro alignment — Watercourse ▭ Western Sydney International boundary (WSP) | <p>Site Access Schedule</p> <ul style="list-style-type: none"> ▭ Project Site ▭ Substratum ▭ Temporary Area |
|---|---|---|---|

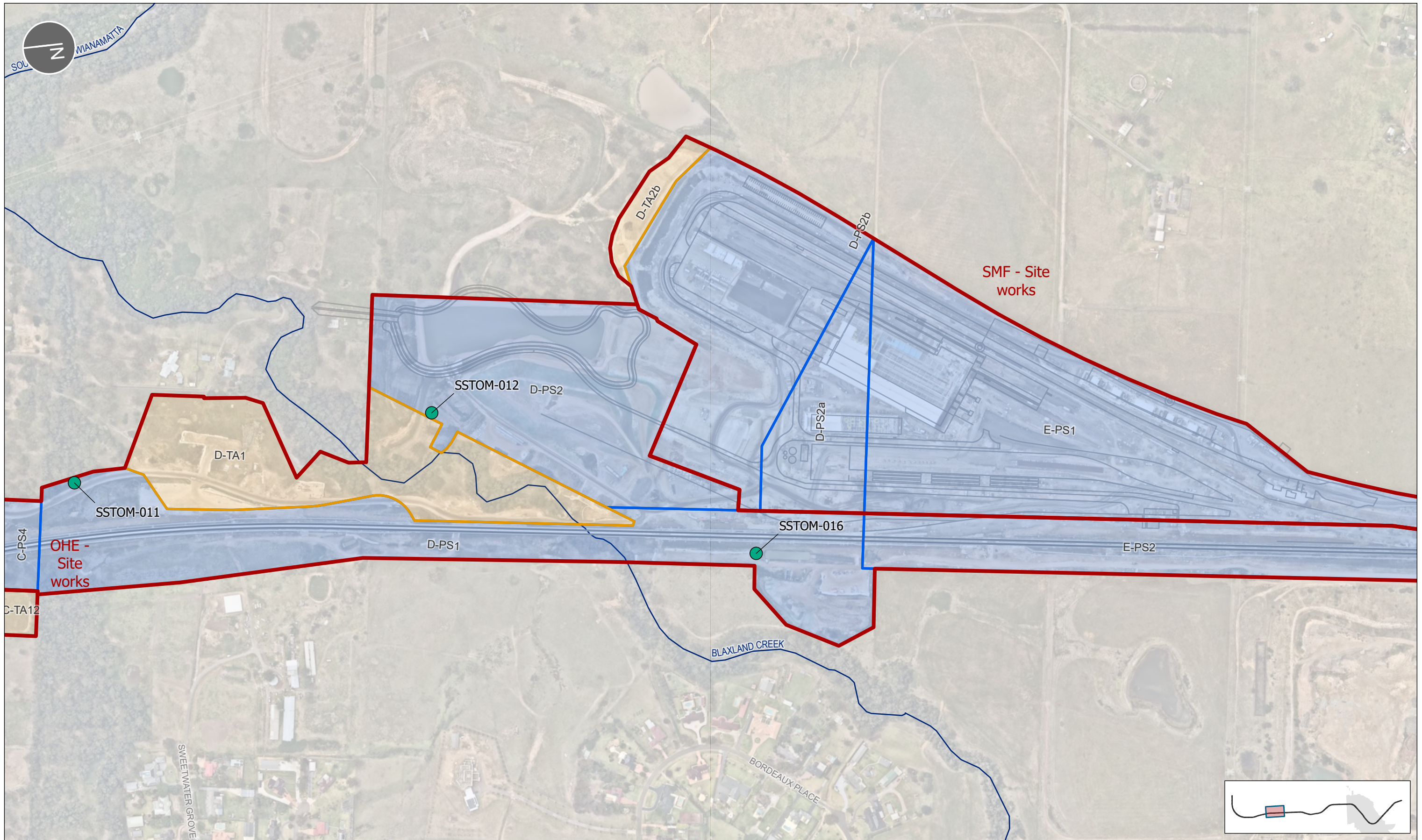


TITLE
EPL 21807 PREMISE BOUNDARY



NOTES		REV		DATE	DESCRIPTION
EPL Premise Boundary Map		45	04.11.2025	Premise Map update	
		46	17.11.2025	Premise Map update	
		47	05.12.2025	Premise Map update	
		48	16.01.2026	Premise Map update	
		49	28.01.2026	Premise Map update	
		50	03.03.2026	Premise Map update	

PROJECT Sydney Metro – Western Sydney Airport - SSTOM		CLIENT Sydney Metro	
SCALE 1:2,000	A3	DRAWN BY DD	APPROVED JB
SHEET 3 of 12	COORDINATE SYSTEM GDA2020 MGA Zone 56	REVIEW JB	DATE 03/03/2026
MAP # SMWSASSM-PLD-1NL-ENV-GIS-000001_50			REV 50



LEGEND		Site Access Schedule	
Discharge Points	EPL Premise Boundary	Project Site	Temporary Area
Temporary Sediment Basin	Surface works	Project Site	Temporary Area
Sub-surface works	Surface works	Project Site	Temporary Area
Metro alignment	Watercourse	Surface works	Temporary Area
Western Sydney International boundary (WSP)		Surface works	Temporary Area

Parklife Metro D&C

TITLE
EPL 21807 PREMISE BOUNDARY

SCALE
1:5,000

SHEET
5 of 12

COORDINATE SYSTEM
GDA2020 MGA Zone 56

0 100 200m

NOTES	
EPL Premise Boundary Map	

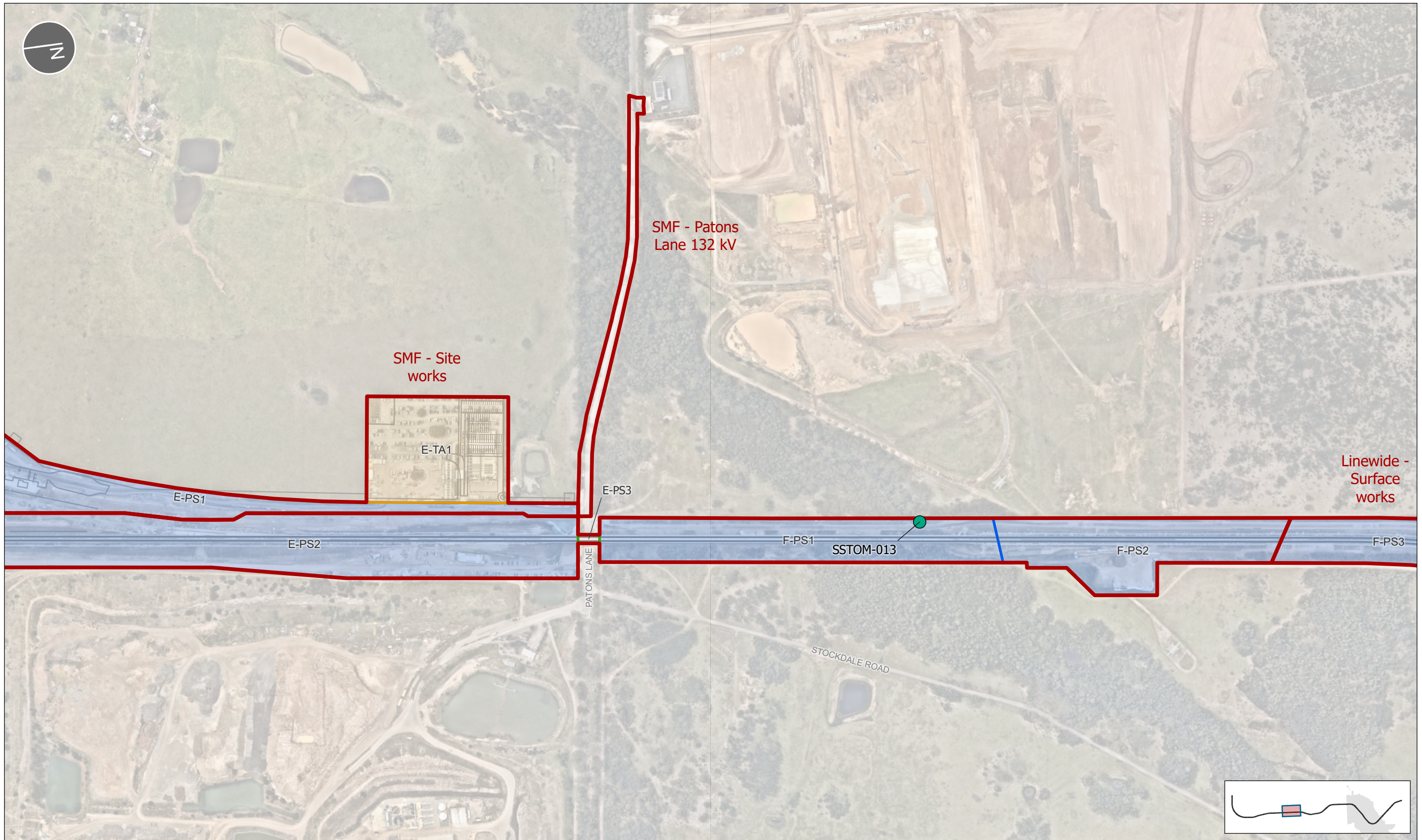
PROJECT	CLIENT
Sydney Metro – Western Sydney Airport - SSTM	Sydney Metro

SCALE	COORDINATE SYSTEM	DATE
1:5,000	GDA2020 MGA Zone 56	03/03/2026

SCALE	DATE	REVIEW
A3	03/03/2026	JB

REV	DATE	DESCRIPTION
45	04.11.2025	Premise Map update
46	17.11.2025	Premise Map update
47	05.12.2025	Premise Map update
48	16.01.2026	Premise Map update
49	28.01.2026	Premise Map update
50	03.03.2026	Premise Map update

MAP #	REV
SMWSASSM-PLD-1NL-ENV-GIS-000001_50	50



LEGEND			
Discharge Points	EPL Premise Boundary	Metro alignment	Site Access Schedule
● Temporary Sediment Basin	▭ Surface works	— Watercourse	▭ Aerial Stratum
	▭ Sub-surface works	▭ Western Sydney International boundary (WSP)	▭ Project Site
			▭ Temporary Area

TITLE
EPL 21807 PREMISE BOUNDARY

SCALE
1:5,000

COORDINATE SYSTEM
GDA2020 MGA Zone 56

0 100 200m

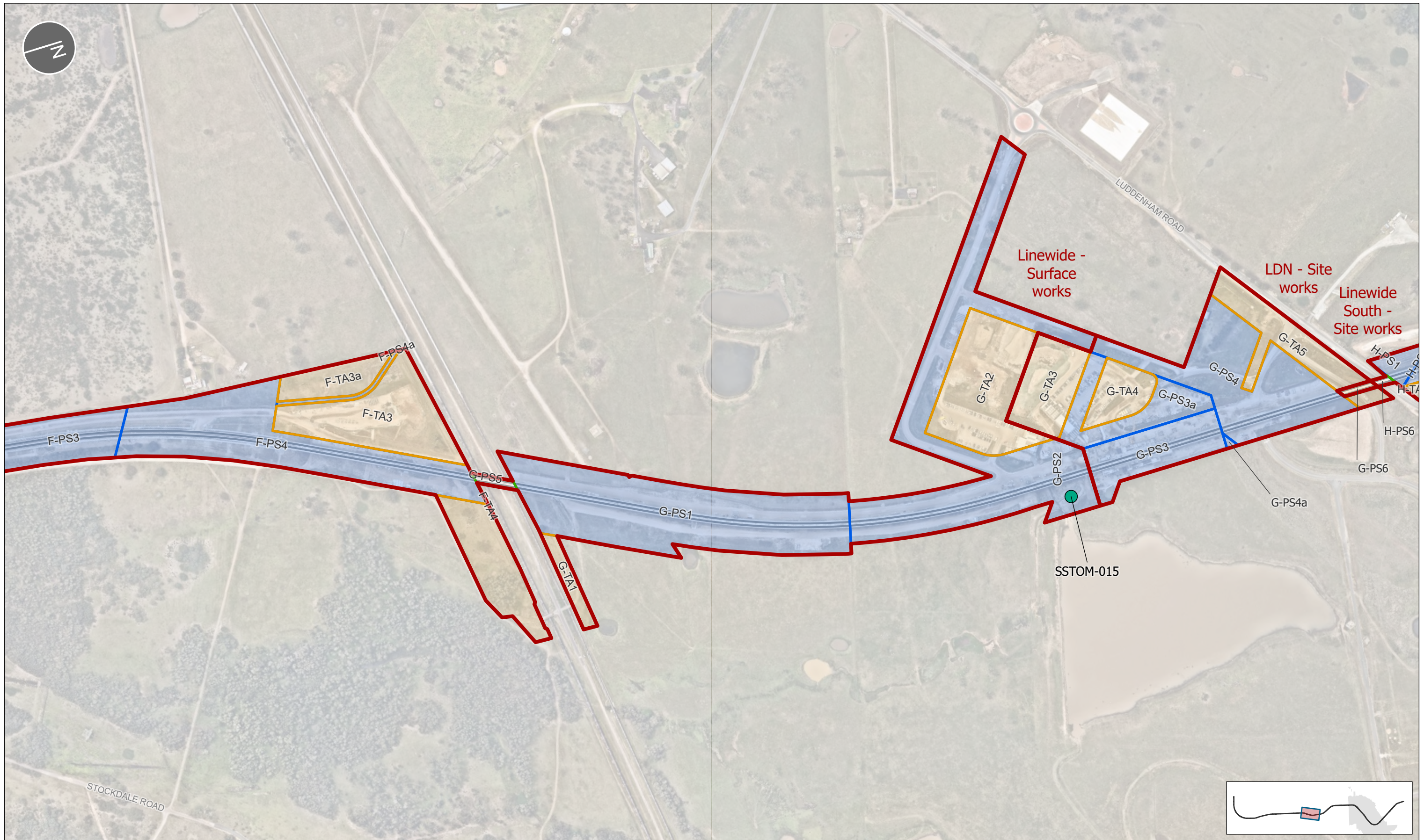
NOTES	
EPL Premise Boundary Map	

PROJECT	CLIENT
Sydney Metro – Western Sydney Airport - SSTM	Sydney Metro

SCALE	A3	DRAWN BY	APPROVED	MAP #	REV
1:5,000		DD	JB	SMWSASSM-PLD-1NL-ENV-GIS-000001_50	50

SHEET	COORDINATE SYSTEM	REVIEW	DATE
6 of 12	GDA2020 MGA Zone 56	JB	03/03/2026

REV	DATE	DESCRIPTION
45	04.11.2025	Premise Map update
46	17.11.2025	Premise Map update
47	05.12.2025	Premise Map update
48	16.01.2026	Premise Map update
49	28.01.2026	Premise Map update
50	03.03.2026	Premise Map update



LEGEND			
Discharge Points	EPL Premise Boundary	Metro alignment	Site Access Schedule
● Temporary Sediment Basin	▭ Surface works	— Watercourse	▭ Aerial Stratum
	▭ Sub-surface works	▭ Western Sydney International boundary (WSP)	▭ Project Site
			▭ Temporary Area

Parklife Metro D&C

TITLE: EPL 21807 PREMISE BOUNDARY

PROJECT: Sydney Metro – Western Sydney Airport - SSTM

SCALE: 1:5,000

SHEET: 7 of 12

COORDINATE SYSTEM: GDA2020 MGA Zone 56

0 100 200m

NOTES: EPL Premise Boundary Map

REV	DATE	DESCRIPTION
45	04.11.2025	Premise Map update
46	17.11.2025	Premise Map update
47	05.12.2025	Premise Map update
48	16.01.2026	Premise Map update
49	28.01.2026	Premise Map update
50	03.03.2026	Premise Map update

REV	DATE	DESCRIPTION
45	04.11.2025	Premise Map update
46	17.11.2025	Premise Map update
47	05.12.2025	Premise Map update
48	16.01.2026	Premise Map update
49	28.01.2026	Premise Map update
50	03.03.2026	Premise Map update

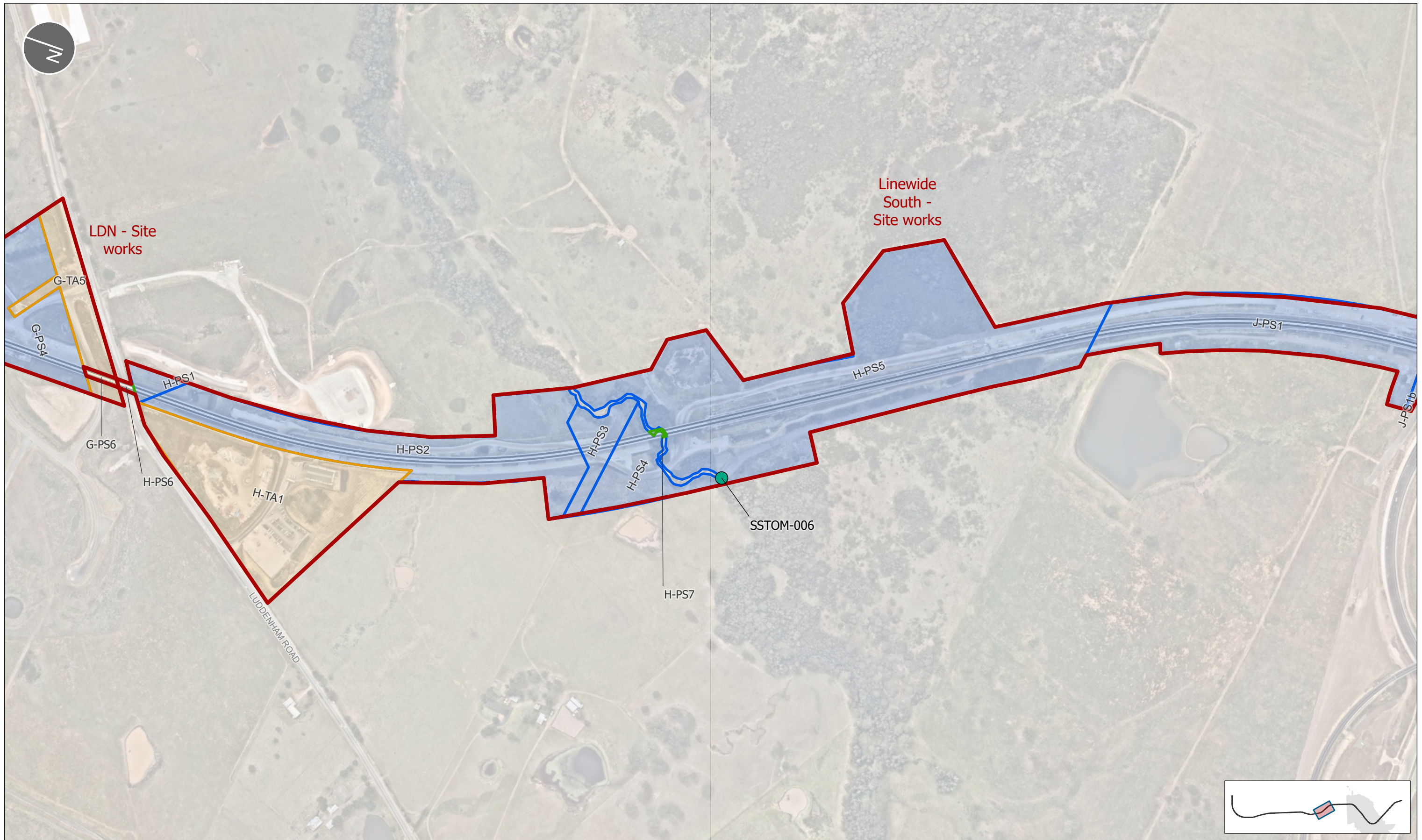
CLIENT: Sydney Metro

APPROVED: JB

DATE: 03/03/2026

MAP # SMWSASSM-PLD-1NL-ENV-GIS-000001_50

50



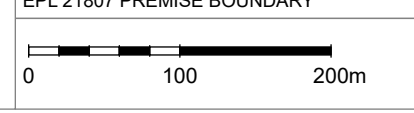
LEGEND			
Discharge Points	EPL Premise Boundary	Metro alignment	Site Access Schedule
● Temporary Sediment Basin	▭ Surface works	— Watercourse	▭ Aerial Stratum
	▭ Sub-surface works	▭ Western Sydney International boundary (WSP)	▭ Project Site
			▭ Temporary Area

Parklife Metro D&C

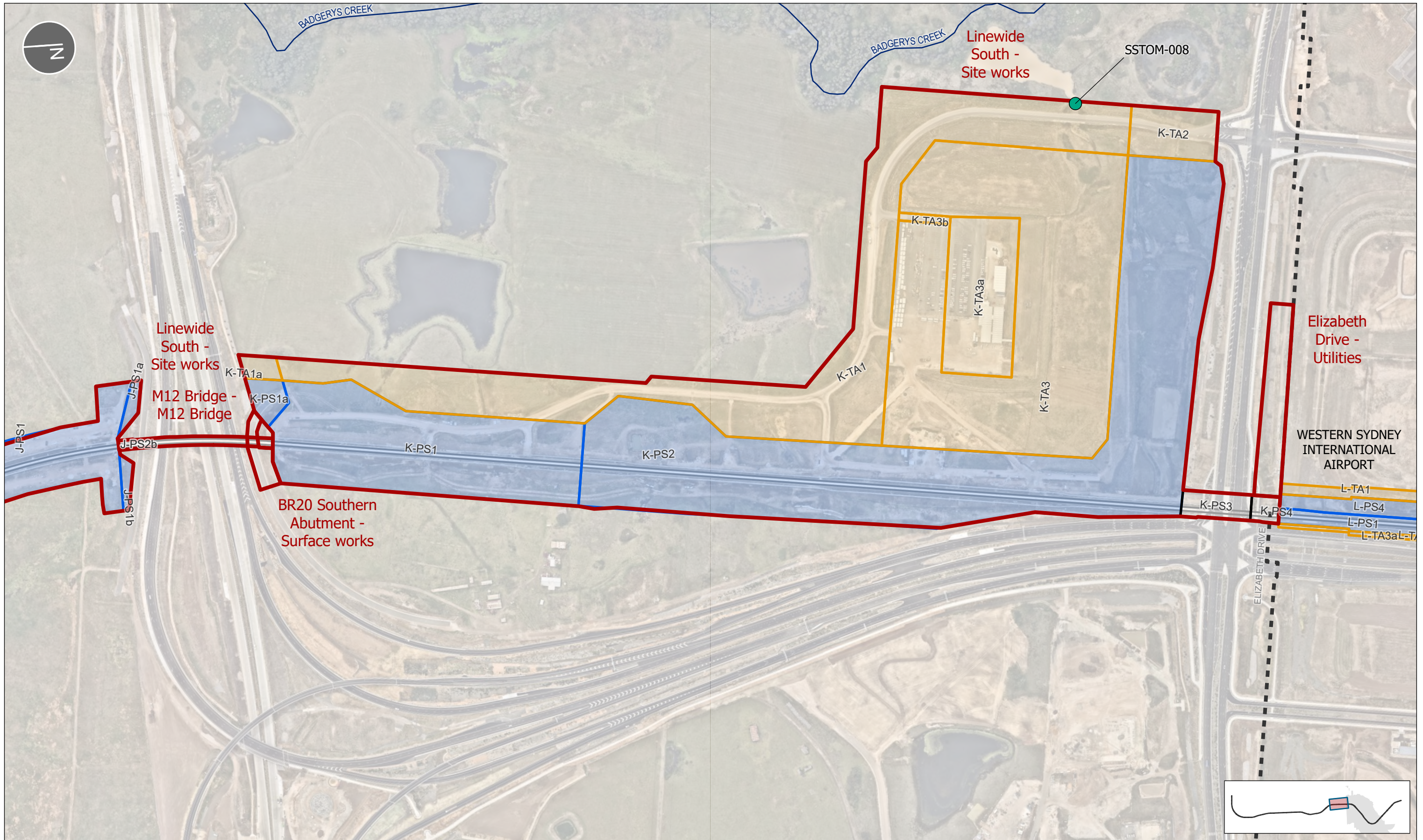
NOTES	
EPL Premise Boundary Map	

REV	DATE	DESCRIPTION
45	04.11.2025	Premise Map update
46	17.11.2025	Premise Map update
47	05.12.2025	Premise Map update
48	16.01.2026	Premise Map update
49	28.01.2026	Premise Map update
50	03.03.2026	Premise Map update

TITLE EPL 21807 PREMISE BOUNDARY	PROJECT Sydney Metro – Western Sydney Airport - SSTOM	CLIENT Sydney Metro
SCALE 1:5,000	A3	DRAWN BY DD
SHEET 8 of 12	COORDINATE SYSTEM GDA2020 MGA Zone 56	REVIEW JB
DATE 03/03/2026		MAP # SMWSASSM-PLD-1NL-ENV-GIS-000001_50



APPROVED JB	REV 50
----------------	-----------



LEGEND				
Discharge Points	EPL Premise Boundary	Metro alignment	Site Access Schedule	Temporary Area
Temporary Sediment Basin	Surface works	Watercourse	Aerial Stratum	
	Sub-surface works	Western Sydney International boundary (WSP)	Project Site	
			Substratum	

Parklife Metro D&C

NOTES

EPL Premise Boundary Map

REV	DATE	DESCRIPTION
45	04.11.2025	Premise Map update
46	17.11.2025	Premise Map update
47	05.12.2025	Premise Map update
48	16.01.2026	Premise Map update
49	28.01.2026	Premise Map update
50	03.03.2026	Premise Map update

TITLE
EPL 21807 PREMISE BOUNDARY

SCALE
1:5,000

SHEET
9 of 12

PROJECT
Sydney Metro – Western Sydney Airport - SSTM

COORDINATE SYSTEM
GDA2020 MGA Zone 56

REVIEW
JB

CLIENT
Sydney Metro

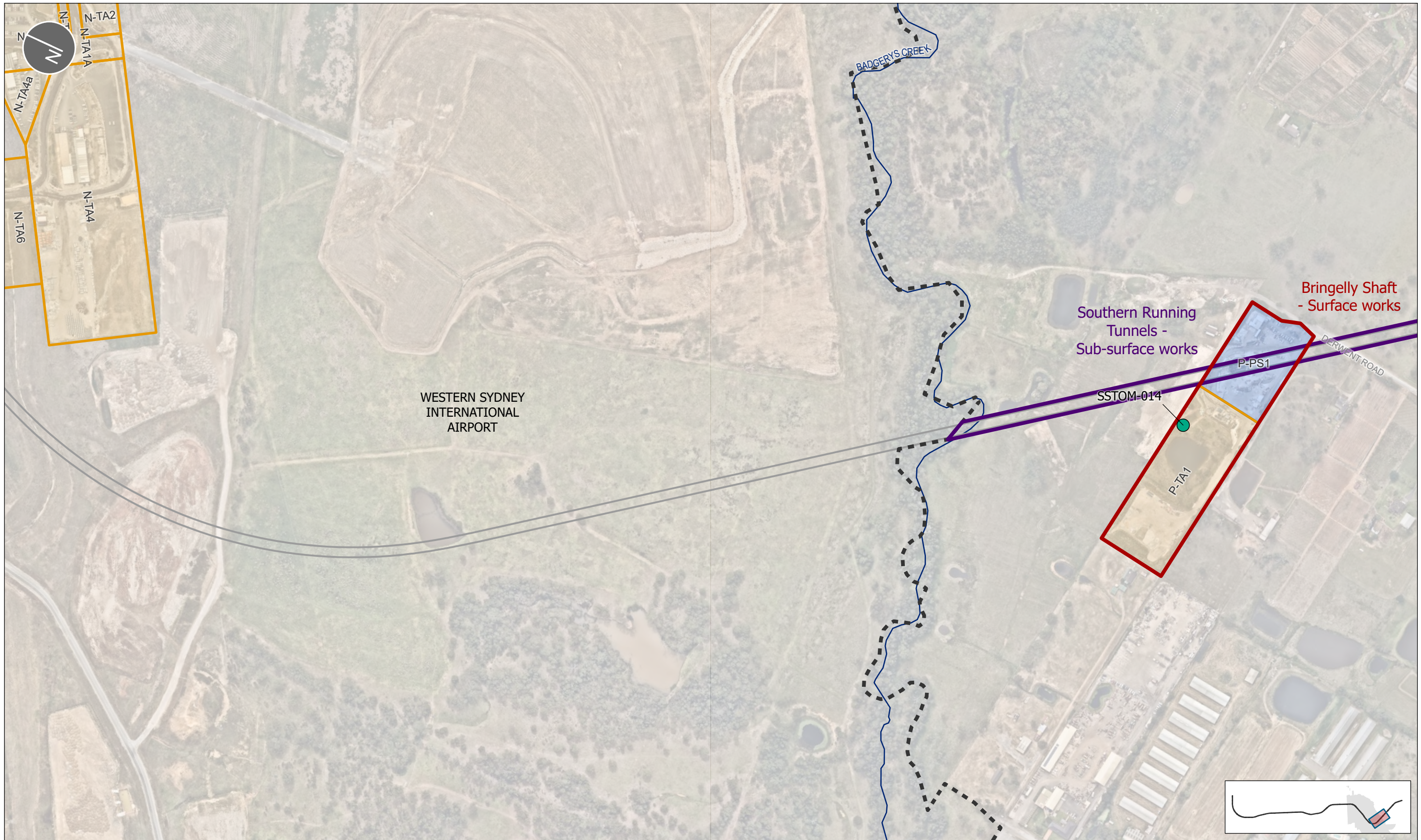
APPROVED
JB

DATE
03/03/2026

MAP #
SMWSASSM-PLD-1NL-ENV-GIS-000001_50

REV
50

GIS MAP file : SSTM_ENV_EPL | C:\Live_Projects\sstom_gis\current\maps\Environment\SSTM_ENV_EPL.aprx



LEGEND			
Discharge Points	EPL Premise Boundary	Metro alignment	Site Access Schedule
Temporary Sediment Basin	Surface works	Watercourse	Project Site
	Sub-surface works	Western Sydney International boundary (WSP)	Temporary Area

NOTES

EPL Premise Boundary Map

REV	DATE	DESCRIPTION
45	04.11.2025	Premise Map update
46	17.11.2025	Premise Map update
47	05.12.2025	Premise Map update
48	16.01.2026	Premise Map update
49	28.01.2026	Premise Map update
50	03.03.2026	Premise Map update

TITLE
EPL 21807 PREMISE BOUNDARY

PROJECT
Sydney Metro – Western Sydney Airport - SSTOM

CLIENT
Sydney Metro

SCALE
1:5,000

A3
DRAWN BY
DD

APPROVED
JB

MAP #
SMWSASSM-PLD-1NL-
ENV-GIS-000001_50

REV
50

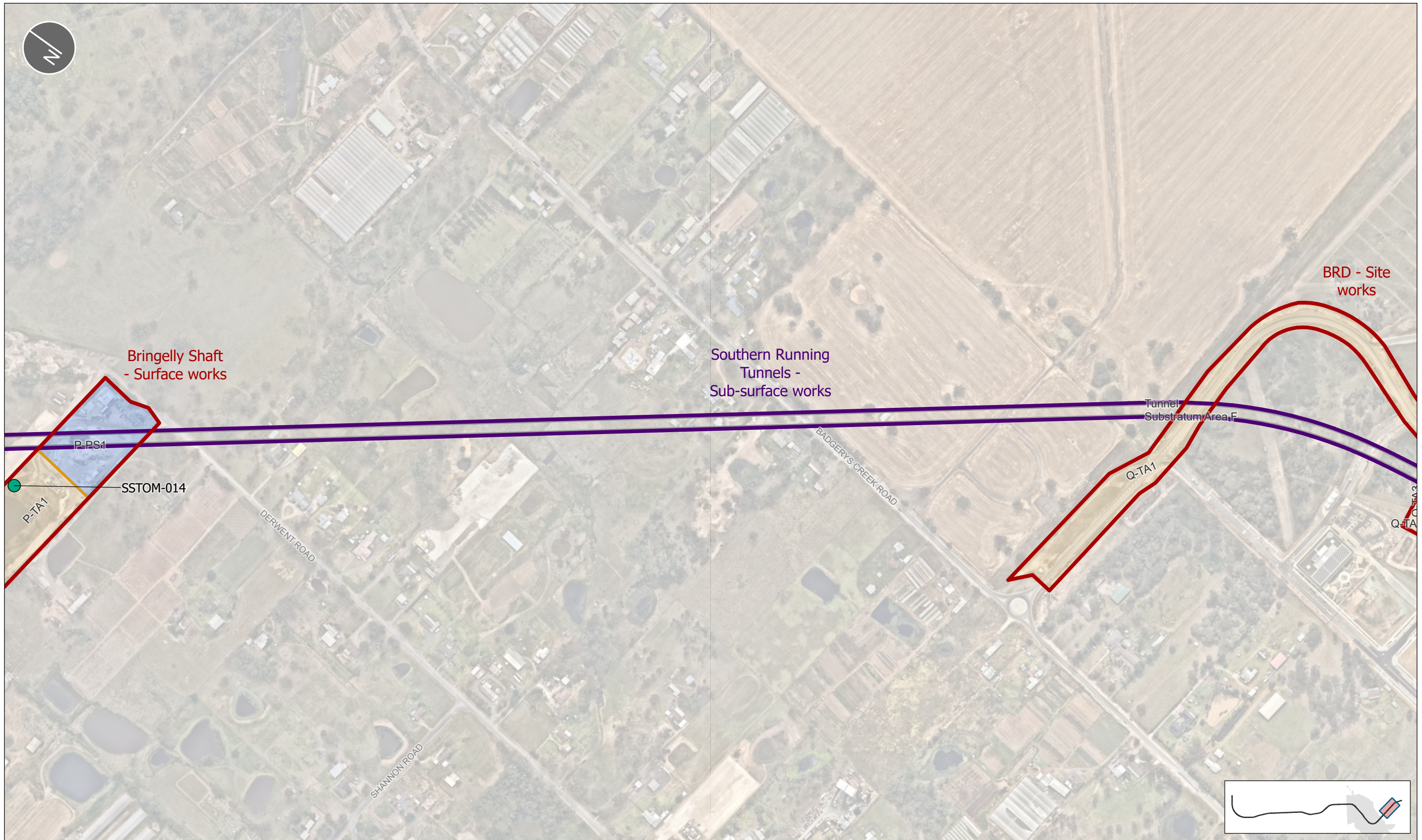
SHEET
10 of 12

COORDINATE SYSTEM
GDA2020 MGA Zone 56

REVIEW
JB

DATE
03/03/2026

GIS MAP file : SSTOM_ENV_EPL | C:\Live_Projects\sstom_gis\current\maps\Environment\SSTOM_ENV_EPL.aprx



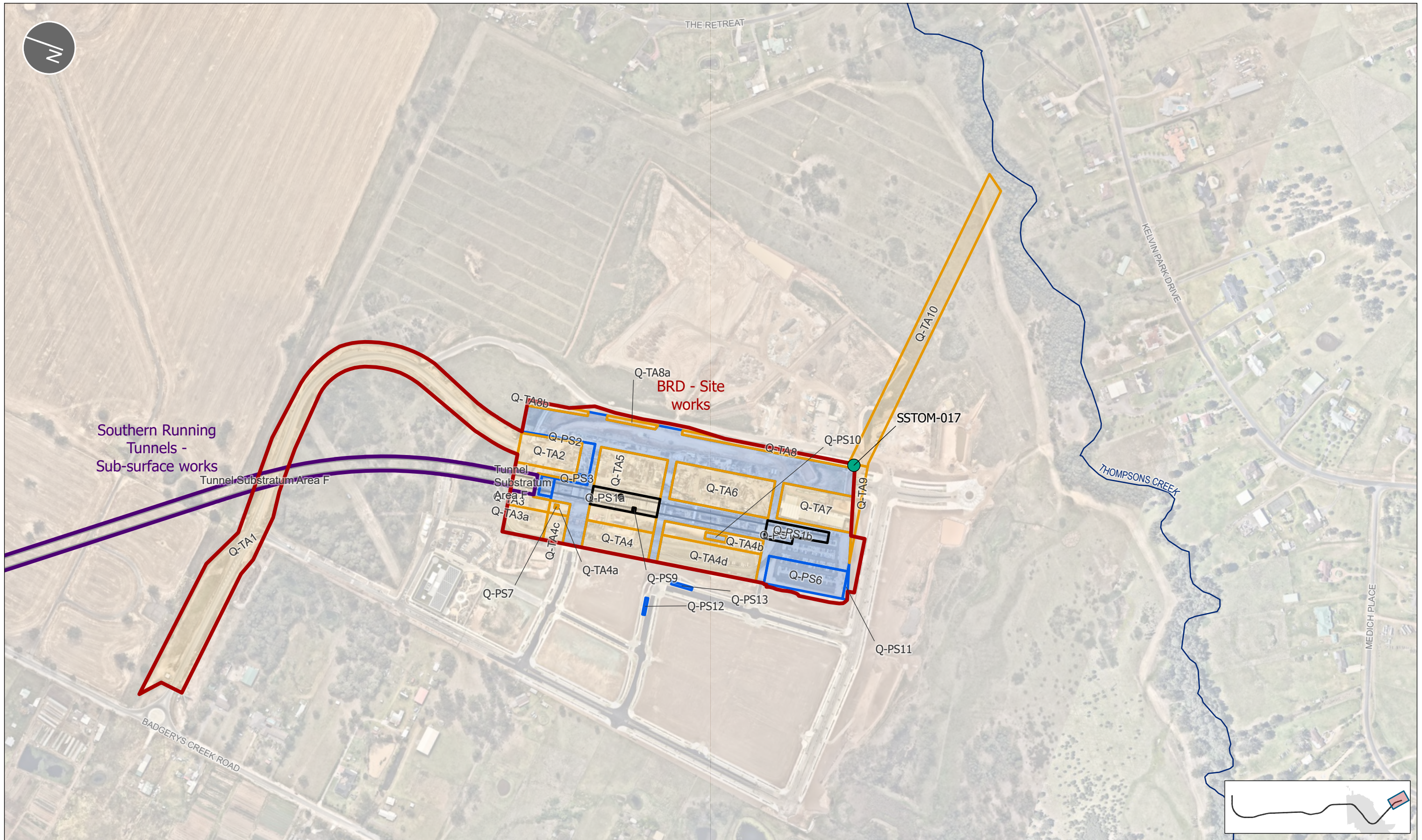
LEGEND			
Discharge Points	EPL Premise Boundary	Metro alignment	Site Access Schedule
● Temporary Sediment Basin	▭ Surface works	— Watercourse	▭ Project Site
	▭ Sub-surface works	▭ Western Sydney International boundary (WSP)	▭ Substratum
			▭ Temporary Area

TITLE
EPL 21807 PREMISE BOUNDARY

NOTES	
EPL Premise Boundary Map	

PROJECT Sydney Metro – Western Sydney Airport - SSTOM	CLIENT Sydney Metro
SCALE 1:5,000	APPROVED JB
SHEET 11 of 12	DATE 03/03/2026
COORDINATE SYSTEM GDA2020 MGA Zone 56	MAP # SMWSASSM-PLD-1NL-ENV-GIS-000001_50

REV	DATE	DESCRIPTION
45	04.11.2025	Premise Map update
46	17.11.2025	Premise Map update
47	05.12.2025	Premise Map update
48	16.01.2026	Premise Map update
49	28.01.2026	Premise Map update
50	03.03.2026	Premise Map update



LEGEND			
Discharge Points	EPL Premise Boundary	Metro alignment	Site Access Schedule
● Temporary Sediment Basin	▭ Surface works	— Watercourse	▭ Project Site
● Water Treatment Plant	▭ Sub-surface works	▭ Western Sydney International boundary (WSP)	▭ Substratum
			▭ Temporary Area

Parklife Metro D&C

TITLE
EPL 21807 PREMISE BOUNDARY

SCALE
1:5,000

DATE
12 of 12

COORDINATE SYSTEM
GDA2020 MGA Zone 56

0 100 200m

NOTES	
EPL Premise Boundary Map	

PROJECT	CLIENT
Sydney Metro – Western Sydney Airport - SSTM	Sydney Metro

SCALE	A3	DRAWN BY	APPROVED	MAP #
1:5,000	A3	DD	JB	SMWSASSM-PLD-1NL-ENV-GIS-000001_50

DATE	REVIEW	DATE
03/03/2026	JB	03/03/2026

REV	DATE	DESCRIPTION
45	04.11.2025	Premise Map update
46	17.11.2025	Premise Map update
47	05.12.2025	Premise Map update
48	16.01.2026	Premise Map update
49	28.01.2026	Premise Map update
50	03.03.2026	Premise Map update

50